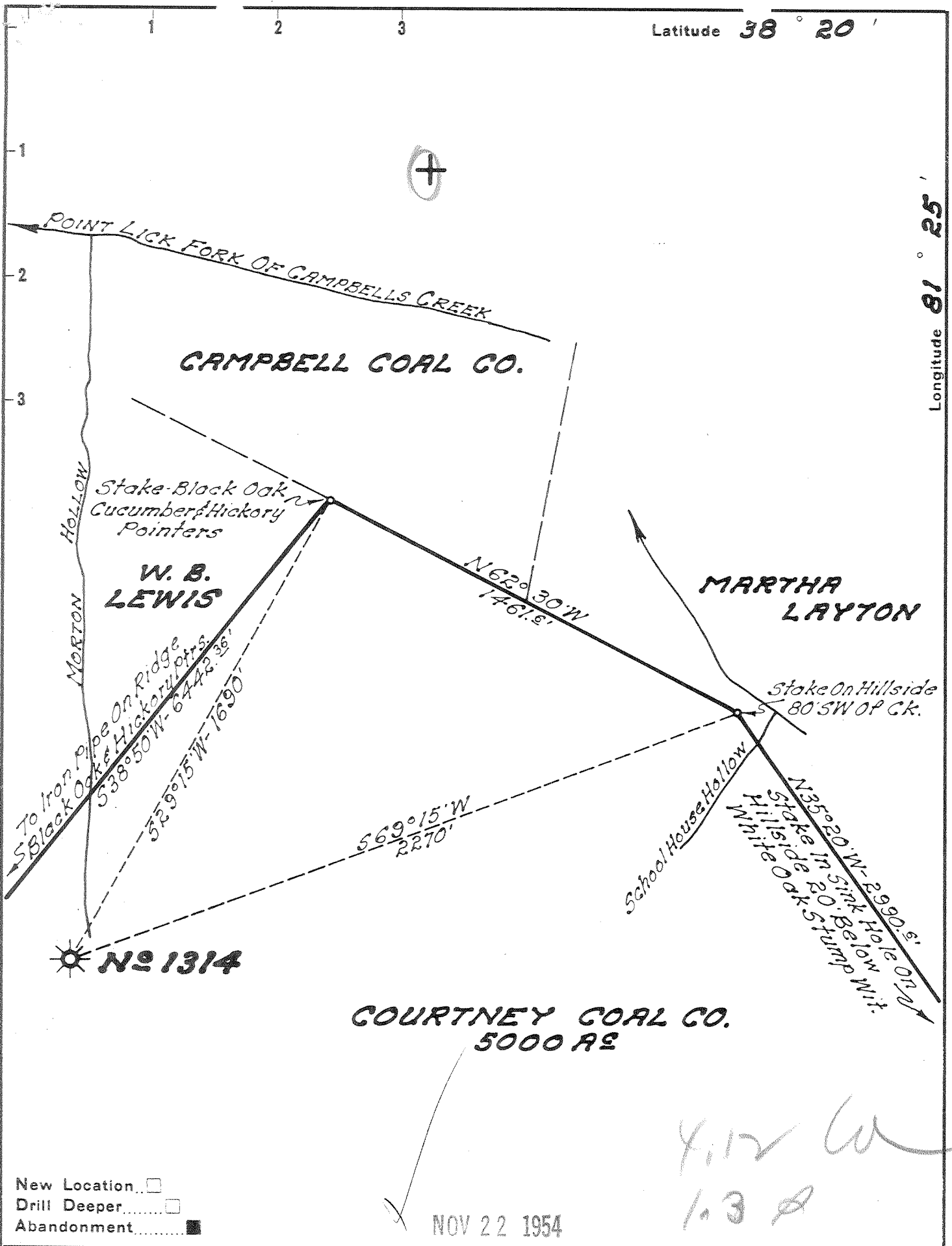


Latitude 38° 20'

Longitude 81° 25'



New Location   
 Drill Deeper   
 Abandonment

NOV 22 1954

Company UNITED FUEL GAS CO.  
 Address CHARLESTON, W. VA.  
 Farm COURTNEY COAL CO.  
 Tract \_\_\_\_\_ Acres 5000 Lease No. 1021  
 Well (Farm) No. \_\_\_\_\_ Serial No. 1314  
 Elevation (Spirit Level) 957.40  
 Quadrangle CLENDENIN  
 County KANAWHA District MALDEN  
 Engineer Paul E. Joachims  
 Engineer's Registration No. 669  
 File No. 68-55-57 Drawing No. \_\_\_\_\_  
 Date 11-4-54 Scale 1" = 400'

STATE OF WEST VIRGINIA  
 DEPARTMENT OF MINES  
 OIL AND GAS DIVISION  
 CHARLESTON

WELL LOCATION MAP  
 FILE NO. KAN-1142-A

+ Denotes location of well on United States Topographic Maps, scale 1 to 62,500, latitude and longitude lines being represented by border lines as shown.

- Denotes one inch spaces on border line of original tracing.

C-6214



STATE OF WEST VIRGINIA  
DEPARTMENT OF MINES  
OIL AND GAS DIVISION

1594

Quadrangle Clendenin

WELL RECORD

Permit No. 1442-A

Oil or Gas Well Gas  
(KIND)

Company UNITED FUEL GAS COMPANY  
Address P.O. Box 1273, Charleston 25, W. Va.  
Farm Courtney Coal Co. Acres 5000  
Location (waters) Campbells Creek  
Well No. 1314 Elev. 957.40'  
District Malden County Kanawha  
The surface of tract is owned in fee by \_\_\_\_\_  
Address \_\_\_\_\_  
Mineral rights are owned by Amherst Coal Co.  
Box 433 Address Charleston 22, W. Va.  
Drilling commenced 3-8-23  
Drilling completed 5-3-23  
Date Shot \_\_\_\_\_ From \_\_\_\_\_ To \_\_\_\_\_  
With \_\_\_\_\_  
Open Flow 30 /10ths Water in 2 Inch  
\_\_\_\_\_ /10ths Merc. in \_\_\_\_\_ Inch  
Volume 260,000 Cu. Ft.  
Rock Pressure 330 lbs. \_\_\_\_\_ hrs.  
Oil \_\_\_\_\_ bbls., 1st 24 hrs.  
Fresh water \_\_\_\_\_ feet \_\_\_\_\_ feet  
Salt water \_\_\_\_\_ feet \_\_\_\_\_ feet

Casing and Tubing	Used in Drilling	Left in Well	Packers
Size			Kind of Packer
16			<u>Parmaco</u>
13			Size of
10			<u>2x5-3/16</u>
8 1/4		<u>600'</u>	Depth set
6 5/8	<u>6-1/4" 1051'</u>		Perf. top
<u>5-3/8"</u>		<u>1372'</u>	Perf. bottom
2			Perf. top
Liners Used			Perf. bottom

CASING CEMENTED \_\_\_\_\_ SIZE \_\_\_\_\_ No. Ft. \_\_\_\_\_ Date \_\_\_\_\_

COAL WAS ENCOUNTERED AT 94 FEET 36 INCHES  
206 FEET 48 INCHES FEET INCHES  
FEET INCHES FEET INCHES

Formation	Color	Hard or Soft	Top	Bottom	Oil, Gas or Water	Depth Found	Remarks
Sand			0	32			
Slate			32	39			
Sand			39	86			
Slate			86	94			
Coal			94	97			
Sand			97	148			
Slate			148	160			
Sand			160	194			
Slate			194	206			
Coal			206	210			
Sand			210	235			
Slate			235	255			
Sand			255	270			
Slate			270	295			
Sand			295	344			
Slate			344	346			
Sand			346	380			
Slate			380	420			
Sand			420	455			
Slate			455	490			
Sand			490	510			
Slate			510	530			
Sand			530	770			
Slate			770	771			
Salt Sand			771	1025			1st Gas 1450-1460
Slate Cave			1025	1030			2nd Gas 1510-1515
Sand			1030	1220			3rd Gas 1523-1538 30/10 W 2"
Slate & Shell			1220	1260			
Sand			1260	1300			
Slate			1300	1303			
Little lime			1303	1331			
Slate			1331	1338			
Black Lime			1338	1348			
Slate			1348	1352			
Big Lime			1352	1520			
Keener Sand			1520	1556			
Red Sand			1556				
Total depth			1589'				

