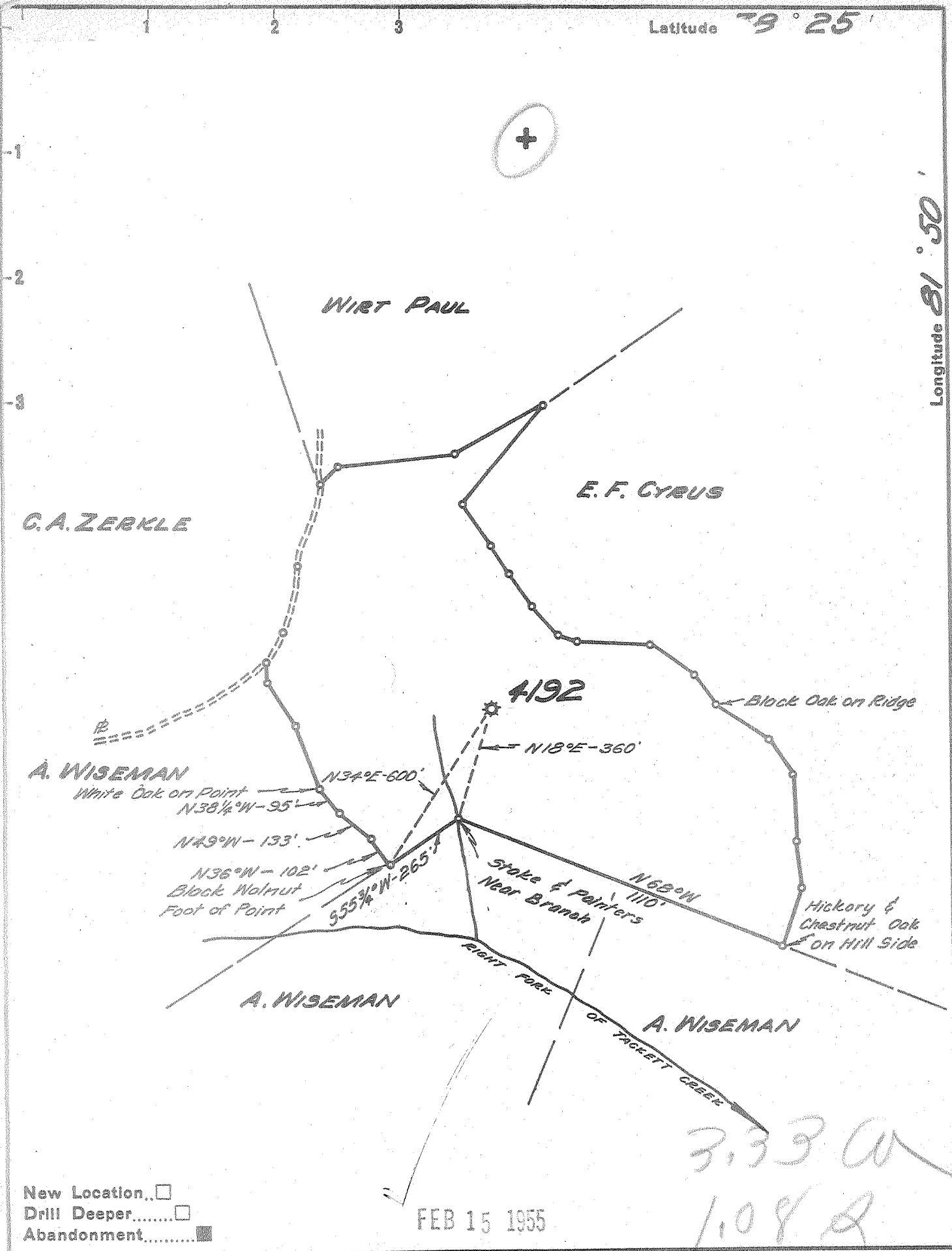


Latitude 39° 25'

Longitude 81° 50'



New Location
 Drill Deeper
 Abandonment

FEB 15 1955

3,330
 1,082

Company UNITED FUEL GAS CO
 Address CHARLESTON, W.VA.
 Farm RUTH J. KIRK, ET AL.
 Tract _____ Acres 33 Lease No. 30334
 Well (Farm) No. _____ Serial No. 4192
 Elevation (Spirit Level) 920.16
 Quadrangle SAINT ALBANS
 County KANAWHA District JEFFERSON
 Engineer Robert R. Jewell
 Engineer's Registration No. 2529
 File No. 46-61 Drawing No. _____
 Date 1-17-55 Scale 1"=400'

STATE OF WEST VIRGINIA
 DEPARTMENT OF MINES
 OIL AND GAS DIVISION
 CHARLESTON

WELL LOCATION MAP
 FILE NO. KAN-1168-A

+ Denotes location of well on United States Topographic Maps, scale 1 to 62,500, latitude and longitude lines being represented by border lines as shown.

- Denotes one inch spaces on border line of original tracing.

RUTH J. KIRK ET AL., NO. A192 - U. F. G. Co., - KAN-1168-A



STATE OF WEST VIRGINIA
DEPARTMENT OF MINES
OIL AND GAS DIVISION

(Handwritten initials)

Quadrangle St. Albans

WELL RECORD

Permit No. 11687A

Oil or Gas Well Gas
(KIND)

Company UNITED FUEL GAS CO.
Address P.O. Box 1273, Charleston 25, W.Va.
Farm Ruth Jane Kirk, et al Acres 33
Location (waters) Tackett Creek
Well No. 4192 Elev. 920.16'
District Jefferson County Kanawha
The surface of tract is owned in fee by _____
Address _____
Mineral rights are owned by Frank Wisman
Rt. 1 Address Scot Depot, W.Va.
Drilling commenced 7-22-29
Drilling completed 10-4-29
Date Shot _____ From _____ To _____
With _____

Casing and Tubing	Used in Drilling	Left in Well	Packers
Size			
16			Kind of Packer
18			<u>Anchor</u>
10		<u>54'</u>	Size of
8 1/4	<u>721'</u>		<u>3x5-3/16x16</u>
6 5/8		<u>1695'</u>	Depth set
5 3/16		<u>1967'</u>	<u>2349'</u>
3		<u>2427'</u>	Perf. top
2			Perf. bottom
Liners Used			Perf. top
			Perf. bottom

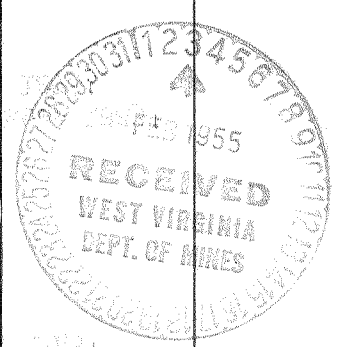
Open Flow 2 1/10ths Water in _____ 2 Inch
_____/10ths Merc. in _____ Inch
Volume 230,000 Cu. Ft.
Rock Pressure 360 lbs. _____ hrs.
Oil _____ bbls., 1st 24 hrs.
Fresh water 580, 761, 801 feet 1245, 1883 feet
Salt water _____ feet _____ feet

CASING CEMENTED _____ SIZE _____ No. Ft. _____ Date _____

COAL WAS ENCOUNTERED AT 523 FEET 24 INCHES
615 FEET 24 INCHES FEET INCHES
FEET INCHES FEET INCHES

Formation	Color	Hard or Soft	Top	Bottom	Oil, Gas or Water	Depth Found	Remarks
Soil			0	10			
Sand			10	30			
Slate			30	35			
Sand			35	40			
Slate			40	50			
Lime			50	70			
Slate			70	75			
Sand			75	100			
Slate			100	110			
Red Rock			110	120			
Slate			120	140			
Red Rock			140	155			
Slate			155	175			
Sand			175	187			
Slate			187	200			
Red Rock			200	215			
Slate			215	225			
Red Rock			225	230			
Slate & Red Rock			230	320			
Sand			320	340			
Slate & Red Rock			340	420			
Black Lime			420	445			
Slate			445	450			
Sand			450	475			
Slate			475	480			
Black Lime			480	500			
Slate			500	505			
Black Lime			505	520			
Slate			520	523			
Coal			523	525			
Sand			525	565			
Slate & Shells			565	590			Water show at 580'
Sand			590	605			
Slate & Shells			605	615			
Coal			615	617			
Sand			617	765			Water 761'
Slate & Lime			765	780			
Sand			780	810			Water 801'
Slate			810	815			

(Handwritten circle)



Formation	Color	Hard or Soft	Top	Bottom	Oil, Gas or Water	Depth Found	Remarks
Sand			815	850			
Slate & Shells			850	1000			
Sand			1000	1025			
Slate			1025	1127			
Gas Sand			1127	1167	Show of oil	1130'	
Slate & Shells			1167	1200			
Sand			1200	1248	Show of oil	1210'	
Slate			1248	1280	Water & gas	1245'	
Salt Sand			1280	1610	Gas	1305'	
Slate			1610	1612			
Maxon Sand			1612	1632			
Slate			1632	1634			
Little Lime			1634	1655			
Slate			1655	1657			
Big Lime			1657	1857	Gas 1750'	Water 1883'	
Big Injun			1857	1935	Show of oil	1870'	
Lime & Slate			1935	1945			
Lime			1945	1961			
Lime Shells			1961	2320			
Brown Shale			2320	2345			
Berea Grit			2345	2370			
Slate & Shells			2370	2416	Gas	2351-2367	
Total depth			2416'				

Date February 2, 19 55

APPROVED UNITED FUEL GAS CO., Owner

By S. R. Ferrell

(Title)

Mgr. Civil Engineering Dept.