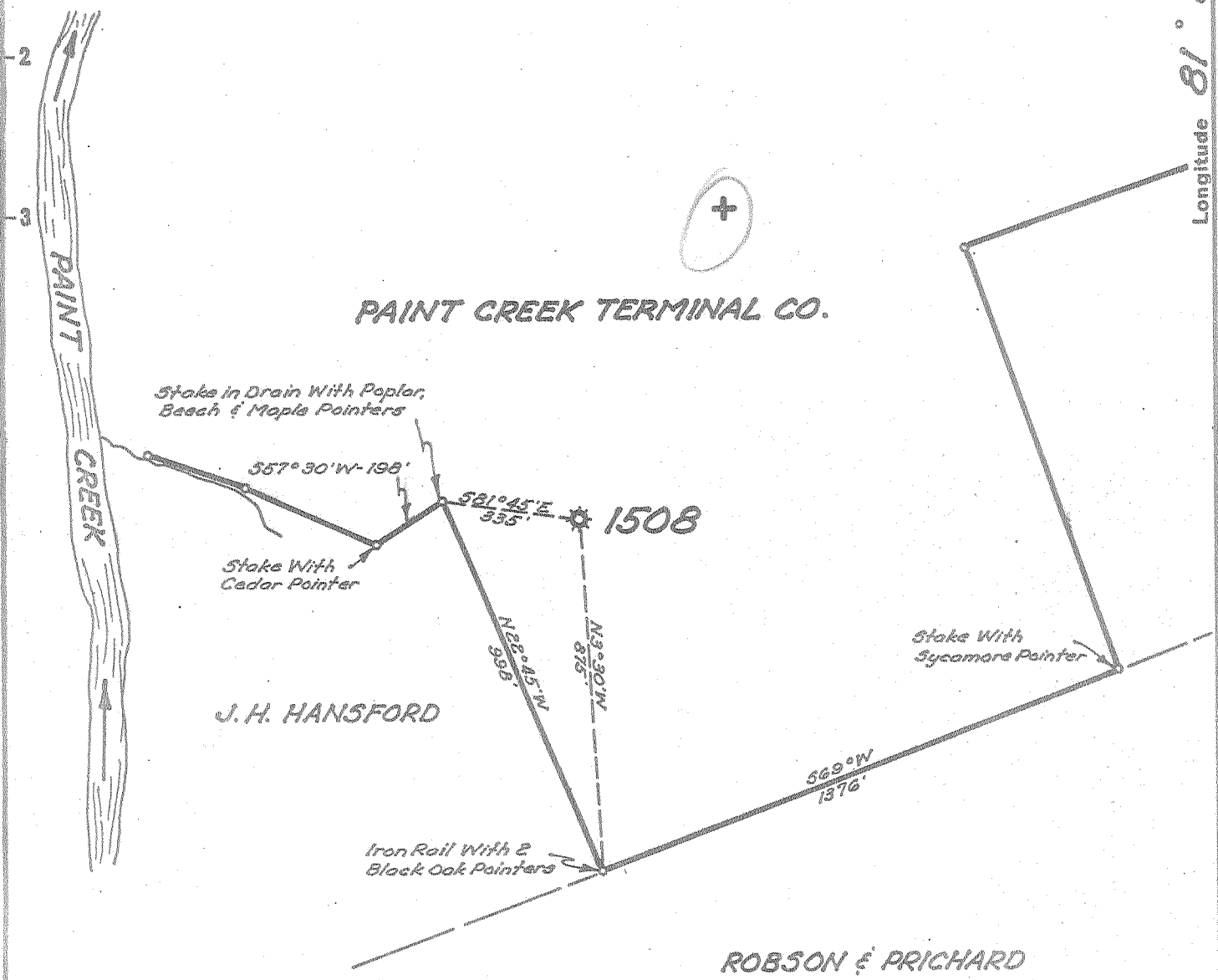


Latitude 8° 15'

Longitude 81° 20'



New Location...   
 Drill Deeper.....   
 Abandonment.....

FEB 28 1955

3.05 AN  
3.1 A

Company UNITED FUEL GAS CO.  
 Address CHARLESTON, W. VA.  
 Farm PAINT CREEK TERMINAL CO.  
 Tract \_\_\_\_\_ Acres 193 Lease No. 12997  
 Well (Farm) No. \_\_\_\_\_ Serial No. 1508  
 Elevation (Spirit Level) 830.0'  
 Quadrangle MONTGOMERY  
 County KANAWHA District CABIN CREEK  
 Engineer [Signature]  
 Engineer's Registration No. 669  
 File No. 74-49 Drawing No. \_\_\_\_\_  
 Date 1-21-55 Scale 1"=400'

STATE OF WEST VIRGINIA  
 DEPARTMENT OF MINES  
 OIL AND GAS DIVISION  
 CHARLESTON

WELL LOCATION MAP  
 FILE NO. KAN-1173-A

+ Denotes location of well on United States Topographic Maps, scale 1 to 62,500, latitude and longitude lines being represented by border lines as shown.  
 - Denotes one inch spaces on border line of original tracing.

PAINT CREEK TERMINAL CO. No. 1508 - U.F.G. Co. - KAN-1173-A



STATE OF WEST VIRGINIA  
DEPARTMENT OF MINES  
OIL AND GAS DIVISION

1899

Quadrangle Montgomery

WELL RECORD

Permit No. 173-A

Oil or Gas Well Gas  
(KIND)

Company UNITED FUEL GAS CO.  
Address P. O. Box 1273, Charleston 25, W. Va.  
Farm Paint Creek Terminal Co. Acres 193  
Location (waters) Paint Creek  
Well No. 1508 Elev. 830'  
District Cabin Creek County Kanawha  
The surface of tract is owned in fee by \_\_\_\_\_  
Address \_\_\_\_\_  
Mineral rights are owned by Eastern Gas & Fuel Assoc.  
Koppers Building Address Pittsburgh 19, Pa.  
Drilling commenced 7-25-25  
Drilling completed 9-19-25  
Date Shot \_\_\_\_\_ From \_\_\_\_\_ To \_\_\_\_\_  
With \_\_\_\_\_

Casing and Tubing	Used in Drilling	Left in Well	Packers
Size			Kind of Packer
16			<u>Anchor</u>
13			Size of
10		<u>362'</u>	<u>3x6-5/8x16</u>
8 1/4	<u>1218'</u>		Depth set
6 5/8		<u>1700'</u>	<u>1945'</u>
5 3/16			Perf. top
3		<u>2150'</u>	Perf. bottom
2			Perf. top
Liners Used			Perf. bottom

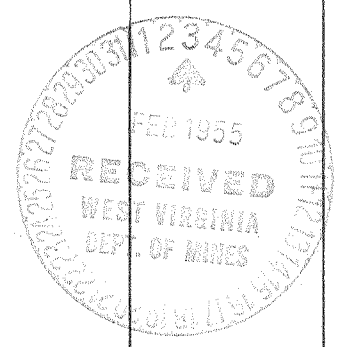
Open Flow \_\_\_\_\_ /10ths Water in \_\_\_\_\_ Inch  
12 /10ths Merc. in 3 Inch  
Volume 1,400,000 Cu. Ft.  
Rock Pressure 465 lbs. \_\_\_\_\_ hrs.  
Oil \_\_\_\_\_ bbls., 1st 24 hrs.  
Fresh water \_\_\_\_\_ feet \_\_\_\_\_ feet  
Salt water 950 feet \_\_\_\_\_ feet

CASING CEMENTED \_\_\_\_\_ SIZE \_\_\_\_\_ No. Ft. \_\_\_\_\_ Date \_\_\_\_\_

COAL WAS ENCOUNTERED AT 60 FEET 60 INCHES  
160 FEET 36 INCHES 300 FEET 36 INCHES  
\_\_\_\_\_ FEET \_\_\_\_\_ INCHES \_\_\_\_\_ FEET \_\_\_\_\_ INCHES

Formation	Color	Hard or Soft	Top	Bottom	Oil, Gas or Water	Depth Found	Remarks
Soil			0	16			
Sand			16	40			
Slate			40	60			
Coal			60	65			
Slate			65	90			
Lime			90	115			
Slate			115	160			
Coal			160	163			
Slate			163	175			
Sand			175	225			
Slate			225	300			
Coal			300	303			
Lime			303	332			
Slate			332	350			
Lime			350	380			
Slate			380	400			
Sand			400	525			
Slate			525	540			
Lime			540	600			
Slate			600	604			
Gas Sand			604	695			
Slate - Black			695	725			
Lime			725	750			
Slate			750	800			
Salt Sand			800	1055			
Slate			1055	1065			
Lime			1065	1080			
Sand			1080	1125			
Slate			1125	1140			
Lime			1140	1150			
Slate			1150	1175			
Red Rock			1175	1220			
Lime			1220	1230			
Sand			1230	1260			
Slate & Shells			1260	1518			
Maxon Sand			1518	1590			
Little Lime			1590	1615			
Slate			1615	1620			
Shells			1620	1660			

Water hole full 950'  
Gas 2056-2068, 2090-2095



JUN 17 1955

