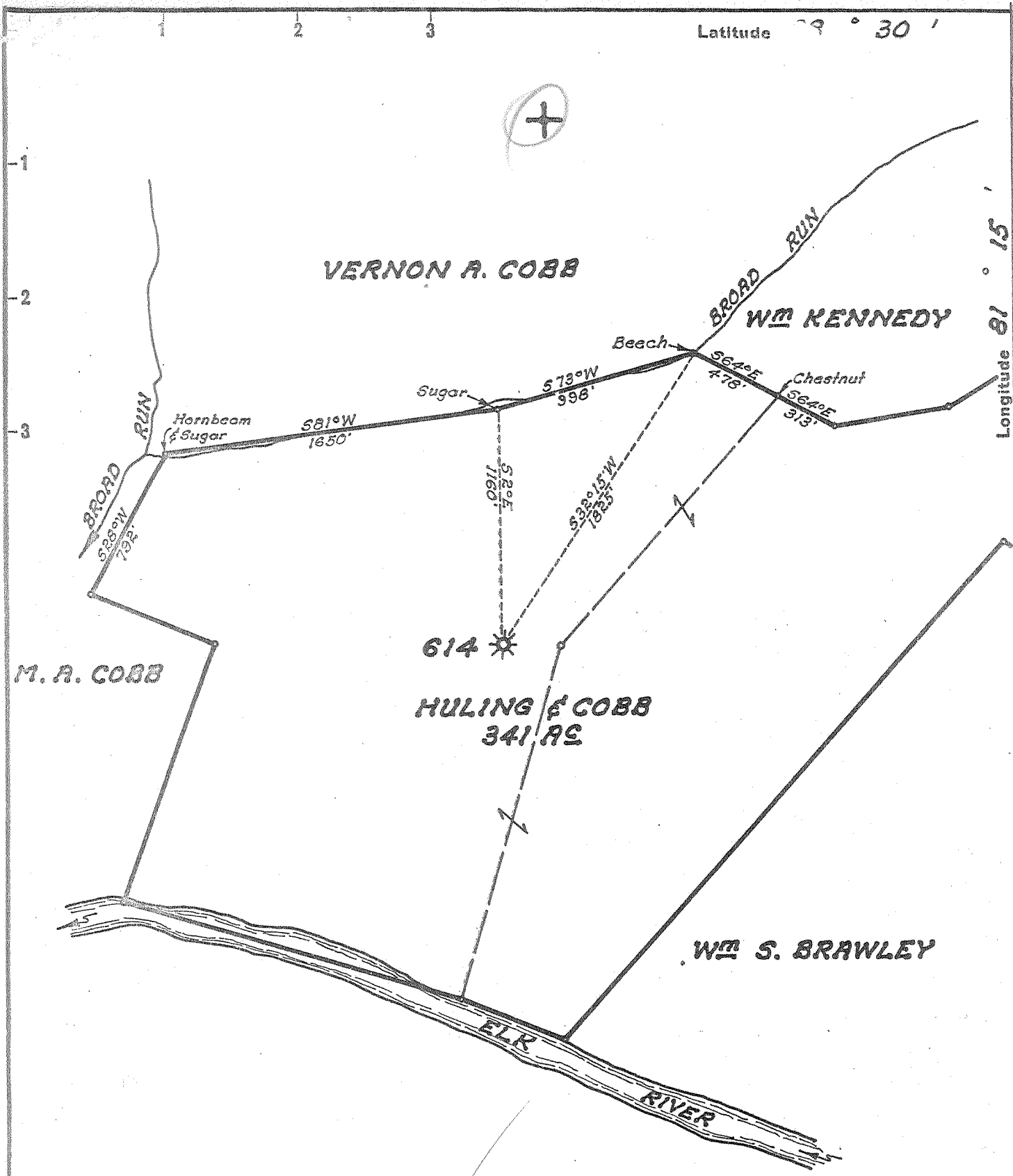


Latitude 39° 30'



Longitude 81° 15'

New Location   
 Drill Deeper   
 Abandonment

APR 18 1955

*3.5 W*  
*0.81*

Company UNITED FUEL GAS CO.  
 Address CHARLESTON, W. VA.  
 Farm HULING & COBB  
 Tract \_\_\_\_\_ Acres 341 Lease No. 4528  
 Well (Farm) No. \_\_\_\_\_ Serial No. 614  
 Elevation (Spirit Level) 914.0  
 Quadrangle CLENDENIN  
 County KANAWHA District BIG SANDY  
 Engineer Seibert R. Howell  
 Engineer's Registration No. 2529  
 File No. 78-67 Drawing No. \_\_\_\_\_  
 Date 3-28-55 Scale 1"=660'

STATE OF WEST VIRGINIA  
 DEPARTMENT OF MINES  
 OIL AND GAS DIVISION  
 CHARLESTON

WELL LOCATION MAP  
 FILE NO. KAN-1175-A

+ Denotes location of well on United States Topographic Maps, scale 1 to 62,500, latitude and longitude lines being represented by border lines as shown.  
 - Denotes one inch spaces on border line of original tracing.

HULING & COBB No. 61A — U.F.G. Co. — 6-6220 KAN-11,



STATE OF WEST VIRGINIA  
DEPARTMENT OF MINES  
OIL AND GAS DIVISION

1908

Quadrangle Clendenin

WELL RECORD

Permit No. AD 1175A

Oil or Gas Well Gas  
(KIND)

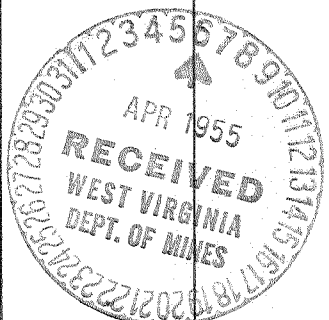
Company UNITED FUEL GAS COMPANY  
Address P.O. Box 1273, Charleston 25, W. Va.  
Farm Hauling & Cobb Acres 341  
Location (waters) Broad Run  
Well No. 614 Elev. 914'  
District Big Sandy County Kanawha  
The surface of tract is owned in fee by \_\_\_\_\_  
Address \_\_\_\_\_  
Mineral rights are owned by Morris Harvey College, et al  
2300 MacCorkle Ave. Address Charleston, W. Va.  
Drilling commenced 5-2-14  
Drilling completed 6-9-14  
Date Shot \_\_\_\_\_ From \_\_\_\_\_ To \_\_\_\_\_  
With \_\_\_\_\_  
Open Flow 12 /10ths Water in 6-5/8 Inch  
\_\_\_\_\_ /10ths Merc. in \_\_\_\_\_ Inch  
Volume 1,724,000 Cu. Ft.  
Rock Pressure 420 lbs. 1 hrs.  
Oil \_\_\_\_\_ bbls., 1st 24 hrs.  
Fresh water \_\_\_\_\_ feet  
Salt water 1140 feet

Casing and Tubing	Used in Drilling	Left in Well	Packers
Size			
16			Kind of Packer <u>Larkin</u>
18			
10			Size of <u>2x6-5/8x16</u>
8 1/4	<u>573'</u>		
6 5/8		<u>1625'</u>	Depth set
5 3/16			
3			Perf. top
2		<u>1830'</u>	Perf. bottom
Liners Used			Perf. top
			Perf. bottom

CASING CEMENTED \_\_\_\_\_ SIZE \_\_\_\_\_ No. Ft. \_\_\_\_\_ Date \_\_\_\_\_

COAL WAS ENCOUNTERED AT 250 FEET 48 INCHES  
470 FEET 60 INCHES FEET INCHES  
FEET INCHES FEET INCHES

Formation	Color	Hard or Soft	Top	Bottom	Oil, Gas or Water	Depth Found	Remarks
Conductor			0	16			
Sand			18	80			
Slate			80	175			
Sand			175	250			
Coal			250	254	Show of gas at 1712'		
Slate			254	270			
Sand			270	360	Gas 1740' to 1765'		
Lime			360	470			
Coal			470	475			
Slate			475	520			
Lime			520	530			
Sand			530	590			
Slate & Lime			590	625			
Sand			625	675			
Black Slate			675	685			
Sand			685	822			
Slate & Lime			822	982			
Salt Sand			982	1500	Show of oil at 1052' Hole full water at 1140'		
Black Slate			1500	1510			
Maxon Sand			1510	1565			
Slate			1565	1570			
Little Lime			1570	1600			
Pencil Cave			1600	1612			
Big Lime			1612	1740			
Big Injun Sand			1740	1775			
Slate Break			1775	1777			
Big Injun Sand			1777	1790			
Black Lime			1790	1800			
Red Rock & Shells			1800	1814			
Total depth			1814'				



AUG 12 1955

