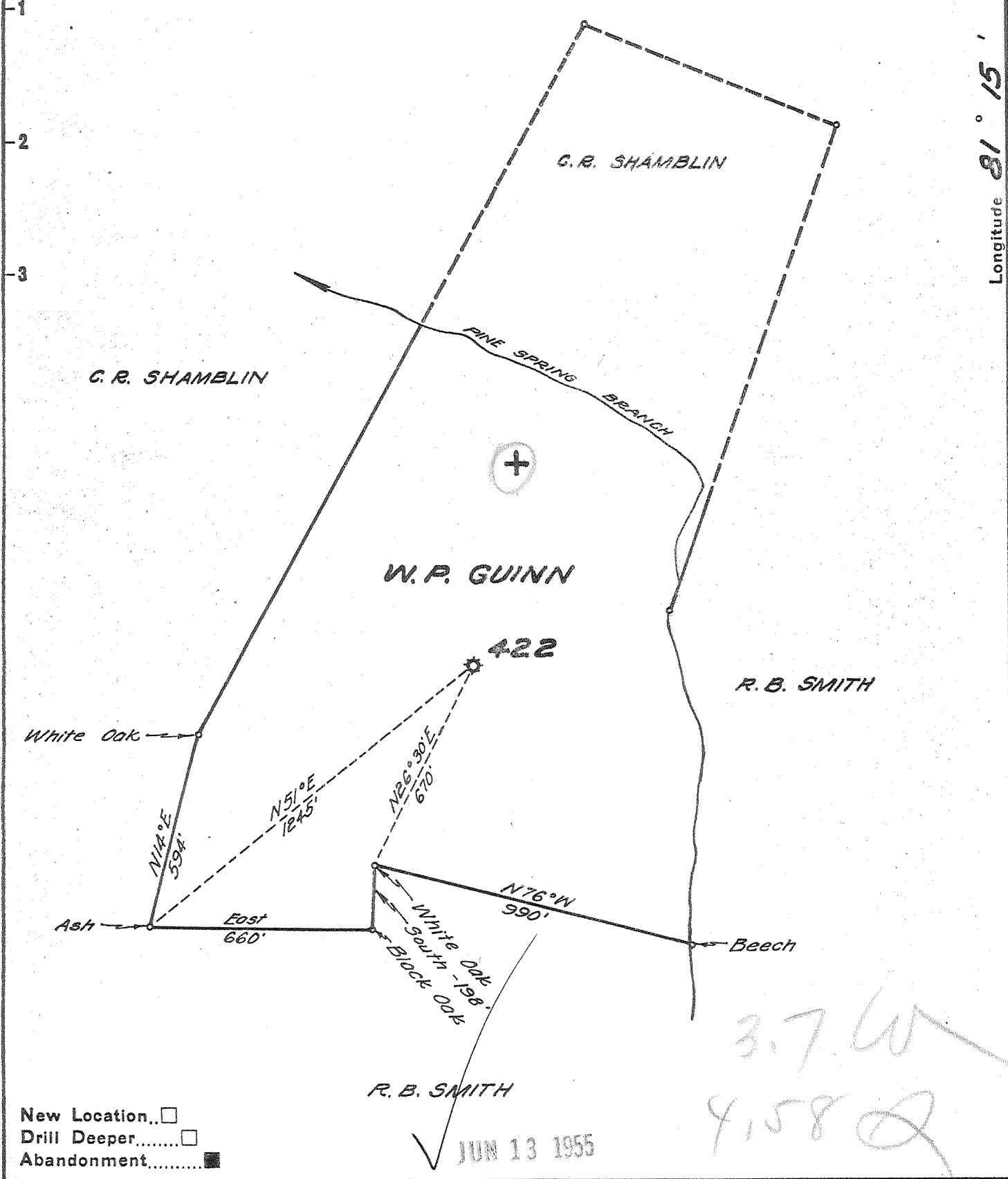


Latitude  $38^{\circ} 35'$

Longitude  $81^{\circ} 15'$



New Location..   
 Drill Deeper.....   
 Abandonment.....

✓ JUN 13 1955

3.76  
4.58

Company UNITED FUEL GAS CO.  
 Address CHARLESTON, W. VA.  
 Farm W. P. GUINN  
 Tract \_\_\_\_\_ Acres 42 Lease No. 2142  
 Well (Farm) No. 1 Serial No. 422  
 Elevation (Spirit Level) 820.0  
 Quadrangle WALTON  
 County KANAWHA District BIG SANDY  
 Engineer Seibert Howell  
 Engineer's Registration No. 2529  
 File No. 78-69-71 Drawing No. \_\_\_\_\_  
 Date 5-24-55 Scale 1"=400'

STATE OF WEST VIRGINIA  
 DEPARTMENT OF MINES  
 OIL AND GAS DIVISION  
 CHARLESTON

WELL LOCATION MAP  
 FILE NO. KAN-1180-A

+ Denotes location of well on United States Topographic Maps, scale 1 to 62,500, latitude and longitude lines being represented by border lines as shown.  
 - Denotes one inch spaces on border line of original tracing.

6-6 220

W.P. GUINN NO. 1 (422) - UNITED FUEL GAS Co. - KAN-1180-A



