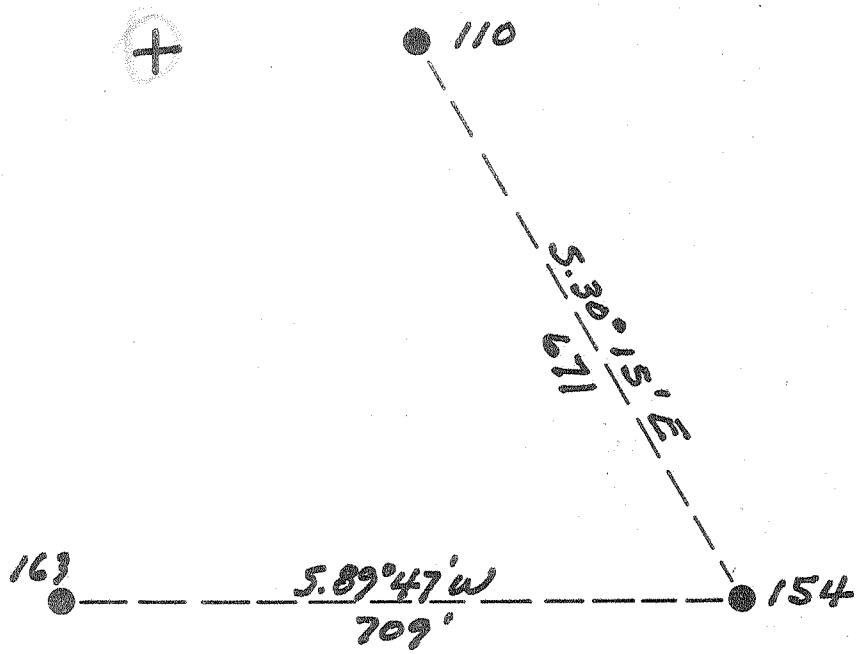


Latitude 38° 10'

Longitude 81° 25'

1  
2  
3



Williams Coal Co.

12000<sup>±</sup>

New Location   
 Drill Deeper   
 Abandonment

SEP 27 1955

4.55 W  
 4.0

Company	Pure Oil Co.
Address	Newark, Ohio
Farm	Williams Coal Co.
Tract	Acres 12000 Lease No. 5012
Well (Farm) No.	154 Serial No. 433
Elevation (Spirit Level)	1184
Quadrangle	Montgomery
County	Kenosha District Cabin Creek
Engineer	J. B. Hunter
Engineer's Registration No.	Ohio - 2912
File No.	Drawing No.
Date	10-22-53 Scale J. B. Hunter

STATE OF WEST VIRGINIA  
 DEPARTMENT OF MINES  
 OIL AND GAS DIVISION  
 CHARLESTON

WELL LOCATION MAP  
 FILE NO. KAN-1202-A

+ Denotes location of well on United States Topographic Maps, scale 1 to 62,500, latitude and longitude lines being represented by border lines as shown.

- Denotes one inch spaces on border line of original tracing.

7-0 240

WILLIAMS COAL CO., NO. 154 - PURE OIL CO., - KAN-1202-A



STATE OF WEST VIRGINIA  
DEPARTMENT OF MINES  
OIL AND GAS DIVISION

1957

WELL RECORD

Oil or Gas Well **WATER INJECTION**  
(KIND)

Quadrangle \_\_\_\_\_  
Permit No. 1000-A  
Company The Pure Oil Company  
Address Box 551 - Newark, Ohio  
Farm Williams Coal Company Acres 12,000  
Location (waters) Gabin Creek  
Well No. 154 Elev. 1184  
District Gabin Creek County Kanawha  
The surface of tract is owned in fee by Shonk Land Company  
2 Kan. Bnkg & Trust Co Address Charleston, W. Va.  
Mineral rights are owned by Ditto  
Address \_\_\_\_\_  
Drilling commenced November 13, 1917  
Drilling completed February 27, 1918  
Date Shot 4/18/18 From 2868 To 2882  
With 60 qts. glycerine  
Open Flow \_\_\_\_\_ /10ths Water in \_\_\_\_\_ Inch  
\_\_\_\_\_ /10ths Merc. in \_\_\_\_\_ Inch  
Volume \_\_\_\_\_ Cu. Ft.  
Rock Pressure \_\_\_\_\_ lbs. \_\_\_\_\_ hrs.  
Oil \_\_\_\_\_ 44 bbls., 1st 24 hrs.  
Fresh water 40 feet 1100 feet  
Salt water 1340 feet 1945 feet

Casing and Tubing	Used in Drilling	Left in Well	Packers
Size			
16			Kind of Packer
18			
10	<u>657</u>	<u>657</u>	Size of
8 1/4	<u>1547</u>	<u>Pulled</u>	
6 3/4	<u>2184</u>	<u>2184</u>	Depth set
5 3/16			
3			Perf. top
2		<u>2858</u>	Perf. bottom
Liners Used			Perf. top
			Perf. bottom

CASING CEMENTED \_\_\_\_\_ SIZE \_\_\_\_\_ No. Ft. \_\_\_\_\_ Date \_\_\_\_\_

COAL WAS ENCOUNTERED AT 70 FEET 72 INCHES  
120 FEET 60 INCHES 645 FEET 36 INCHES  
\_\_\_\_\_ FEET \_\_\_\_\_ INCHES \_\_\_\_\_ FEET \_\_\_\_\_ INCHES

Formation	Color	Hard or Soft	Top	Bottom	Oil, Gas or Water	Depth Found	Remarks
Conductor			0	20			
Sand	white		20	45	Water	40'	Hole full
Clate	black		45	70			
Coal	black		70	76			
Clate	black		76	100			
Sand	white		100	120			
Coal	black		120	125			
Clate	black		125	175			
Sand	white		175	350			
Clate & Lime	black		350	540			
Sand	white		540	630			
Lime	black		630	645			
Coal	black		645	648			
Lime	black		648	657			
Sand	white		657	700			
Clate & Lime	black		700	810			
Sand	white		810	925			
Clate	black		925	950			
Sand	white		950	1045			
Clate	black		1045	1050			
BIG DUNKARD	white		1050	1200			
Clate	black		1200	1240	Water	1100'	
ALT SAND			1240	1540	S. Water	1340'	Hole filled up 800'.
Clate	black		1540	1695			
Red Rock			1695	1730			
Clate & Lime	black		1730	1840			
Red Rock			1840	1870			
SAXON SAND			1870	2020	S. Water	1945'	5 Blrs. per hr.
Clate & Lime	black		2020	2120			
Little Lime	black		2120	2160			
Concil Cave			2160	2168			
BIG LIME	white		2168	2370			
Sandy Lime	white		2370	2420			
BIG INJUN	red		2420	2455			
Sand	white		2455	2480			
Clate & Lime	black		2480	2675			
BEIR SAND	white		2675	2700			



JUNE 21 1956

Formation	Color	Hard or Soft	Top	Bottom	Oil, Gas or Water	Depth Found	Remarks
Slate & Lime	black		2700	2853			
BEREA SAND			2853	2882	Oil & Gas	2871-2876'	
				2887	TOTAL DEPTH		
				2889	T.D. AFTER O.O.		
<p>Note: 6-5/8" x 2" x 16" Parmaco expanding gas anchor packer set at 2858' (2 jts.) 31' 2" anchor, 31 1/2' of 3" anchor. Cemented packer with 8 sacks cement and loaded with 65 sacks mud in 1936. In 1948 cemented packer with 20 bags cement.</p>							

2866  
2882  
2868

Date October 22, 19 53

APPROVED THE PURE OIL COMPANY, Owner

By Guy J. Andersen

(Title)  
Division Superintendent