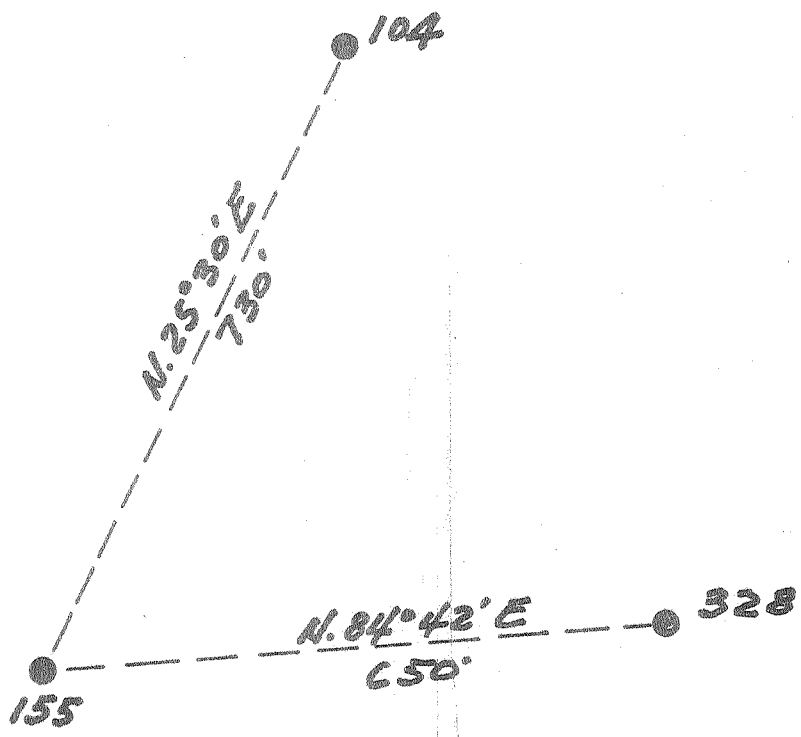


Latitude $38^{\circ} 10''$

Longitude $81^{\circ} 30'$



(+)

Williams Coal Co.
12000 ac

New Location...
 Drill Deeper...
 Abandonment...

OCT 3 1955

0.4 W
Y. 2 A

Company	Pure Oil Co.
Address	Newark, Ohio
Farm	Williams Coal Co.
Tract	Acres 12000 Lease No. 5012
Well (Farm) No.	155 Serial No. 434
Elevation (Spirit Level)	1493
Quadrangle	Paytona
County	Hanawha District Cabin Creek
Engineer	J. B. Smith
Engineer's Registration No.	Ohio-2712
File No.	Drawing No.
Date	10-22-53 Scale 1" = 200'

STATE OF WEST VIRGINIA
DEPARTMENT OF MINES
OIL AND GAS DIVISION
CHARLESTON

WELL LOCATION MAP
FILE NO. KAN-1203-A

+ Denotes location of well on United States Topographic Maps, scale 1 to 62,500, latitude and longitude lines being represented by border lines as shown.

- Denotes one inch spaces on border line of original tracing.

8-05-240



STATE OF WEST VIRGINIA
DEPARTMENT OF MINES
OIL AND GAS DIVISION

1958

WELL RECORD

WATER INJECTION
(KIND)

Quadrangle _____

Permit No. 2003 A

Oil or Gas Well _____

Company The Pure Oil Company
Address Box 551 - Newark, Ohio
Farm Williams Coal Company Acres 12,000
Location (waters) Cabin Creek
Well No. 155 Elev. 1493
District Cabin Creek County Kanawha
The surface of tract is owned in fee by Shonk Land Company
802 Kan Bnkg & Trust Co Bldg. Charleston, W. Va.
Mineral rights are owned by Ditto
Address _____

Casing and Tubing	Used in Drilling	Left in Well	Packers
Size			Kind of Packer
16			
13			<u>3 step expanding</u>
10	<u>981</u>	<u>981</u>	Size of <u>2" x 6-5/8"</u>
8 1/4	<u>1835</u>	<u>Pulled</u>	<u>x 16"</u>
6 3/4	<u>2498</u>	<u>2498</u>	Depth set <u>3151 1/2'</u>
5 3/16			
3			Perf. top _____
2		<u>3151</u>	Perf. bottom _____
Liners Used			Perf. top _____
			Perf. bottom _____

Drilling commenced December 31, 1917

Drilling completed April 27, 1918

Date Shot 4/26/18 From 3167 To 3177

With 40 qts. glycerine

Open Flow /10ths Water in _____ Inch

/10ths Merc. in _____ Inch

Volume _____ Cu. Ft.

Rock Pressure _____ lbs. _____ hrs.

Oil _____ 39 bbls., 1st 24 hrs.

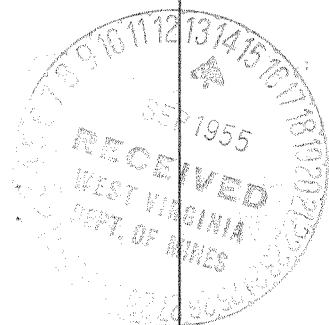
Fresh water _____ feet _____ feet

Salt water 1670, 1680 feet 2185, 2220 feet

CASING CEMENTED _____ SIZE _____ No. Ft. _____ Date _____

COAL WAS ENCOUNTERED AT	SIZE	No. Ft.	INCHES
<u>190</u>	<u>380</u>	<u>48</u>	<u>48</u>
<u>550</u>	<u>36</u>	<u>805</u>	<u>48</u>
<u>942</u>	<u>36</u>	<u>972</u>	<u>48</u>

Formation	Color	Hard or Soft	Top	Bottom	Oil, Gas or Water	Depth Found	Remarks
Conductor			0	25			
Slate	white		25	35			
Sand	white		35	175			
Slate	black		175	190			
Coal	black		190	194			
Sand	white		194	260			
Slate	black		260	285			
Sand	white		285	345			
Slate	black		345	360			
Sand	white		360	380			
Coal	black		380	384			
Slate	black		384	470			
Sand	white		470	550			
Coal	black		550	553			
Slate	black		553	560			
Sand	white		560	615			
Slate	black		615	625			
Sand	white		625	720			
Slate	black		720	795			
Sand	white		795	805			
Coal	black		805	809			
Slate	black		809	820			
Sand	white		820	850			
Slate	black		850	942			
Coal	black		942	945			
Slate	black		945	972			
Coal	black		972	976			
Sand	white		976	1070			
Slate	black		1070	1115			
Sand	white		1115	1200			
Slate	black		1200	1315			
Sand	white		1315	1375			
Slate	black		1375	1380			
HIG DUNKARD			1380	1475			
Slate	black		1475	1545			
SALT SAND			1545	1810	S. Water	1670'	1 Blr. per hr.
					S. Water	1680'	Hole filled up 900'.



JUNE 21 1958

Formation	Color	Hard or Soft	Top	Bottom	Oil, Gas or Water	Depth Found	Remarks
ate & Shells			1810	1970			
ed Rock			1970	1995			
ate & Lime			1995	2040			
ed Rock			2040	2070			
ate	black		2070	2110			
KON SAND			2110	2385	S. Water	2185'	1 Blr. per hr.
					S. Water	2220'	Hole filled up
							1500'.
ate & Lime			2385	2483			
ncil Gave			2483	2490			
G LIME			2490	2705	Gas	2500'	
ate	black		2705	2710			
G INJUN	red		2710	2755			
ate & Shells			2755	2964			
R SAND			2964	2994			
ate & Shells			2994	3127			
ale	brown		3127	3147			
REA SAND			3147	3181	Oil	3164-3177'	
				3181	<u>TOTAL DEPTH</u>		
				3182	T.D. AFTER C.O.		
Note: 2" x 6-5/8" x 16" 3 step packer set at 3151 1/2 and cemented with 7 sacks cement in 1937. In 1948 cemented packer with 20 sacks cement.							

Date October 23, 19 53

APPROVED THE PURE OIL COMPANY, Owner

By Guy J. Andersen
(Title)

Division Superintendent