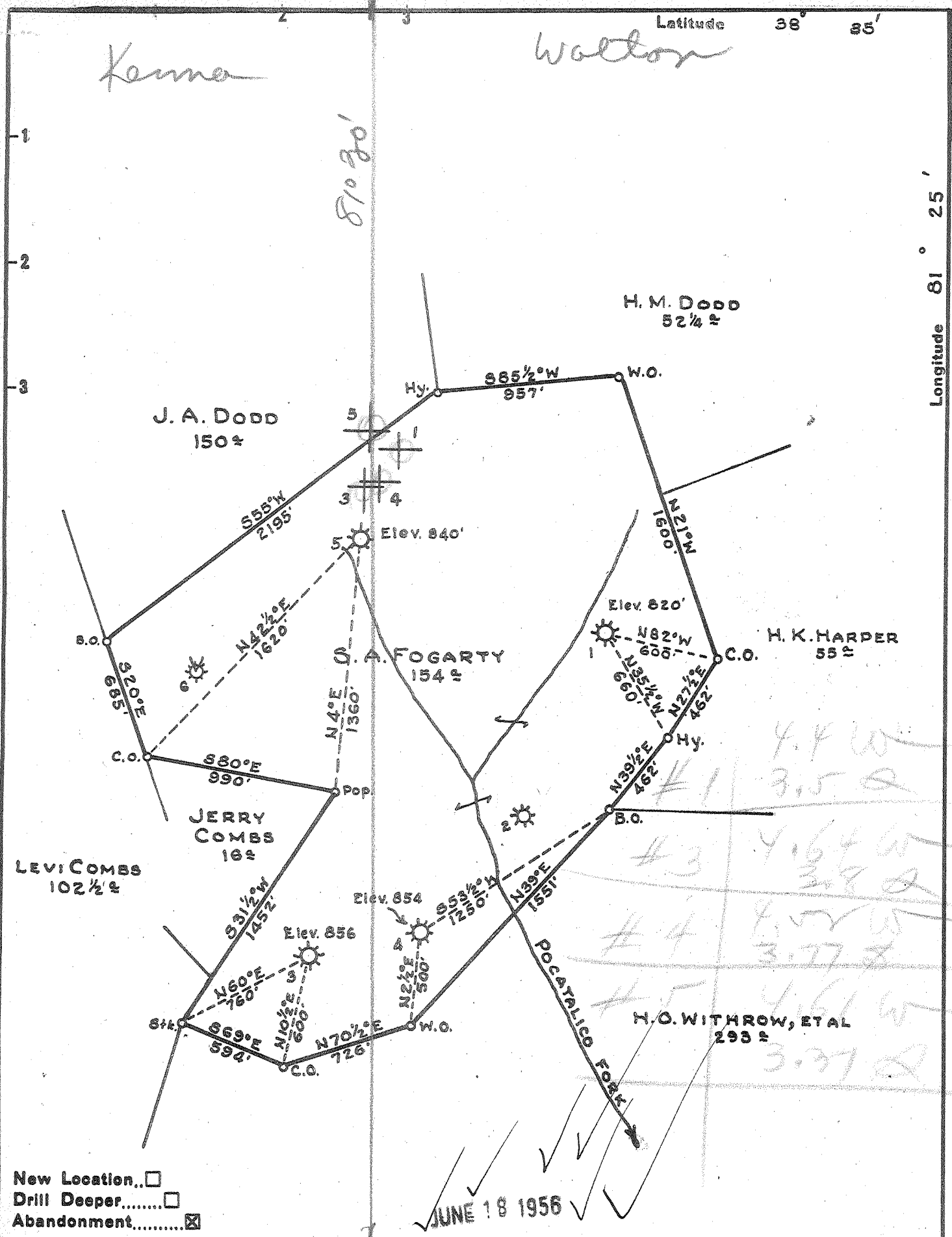


Kenna

Walton

Latitude 38° 25'

Longitude 81° 25'



New Location..   
 Drill Deeper.....   
 Abandonment.....

JUNE 18 1956

Company POCA FORK OIL & GAS CO.  
 Address CLENDENIN, W. VA.  
 Farm S. A. FOGARTY  
 Tract \_\_\_\_\_ Acres 154 Lease No. \_\_\_\_\_  
 Well (Farm) No. 1, 3, 4 & 5 Serial No. 21-820; 23-856; 24-854; 25-840  
 Elevation (Spirit Level) 21-820; 23-856; 24-854; 25-840  
 Quadrangle KENNA & WALTON  
 County KANAWHA District ELK  
 Engineer PAUL E. JOACHIM  
 Engineer's Registration No. 669  
 File No. 68-71 Drawing No. \_\_\_\_\_  
 Date MAY 10, 1956 Scale 1" = 660'

STATE OF WEST VIRGINIA  
 DEPARTMENT OF MINES  
 OIL AND GAS DIVISION  
 CHARLESTON

WELL LOCATION MAP

FILE NO. KAN-1238-A-#3  
KAN-1239-A-#4

+ Denotes location of well on United States Topographic Maps, scale 1 to 62,500, latitude and longitude lines being represented by border lines as shown.  
 — Denotes one inch spaces on border line of original tracing.

S.A. FOGARTY NOS. 3 & 4 — POCA FORK O. & G. CO. — KAN-1238-39-A