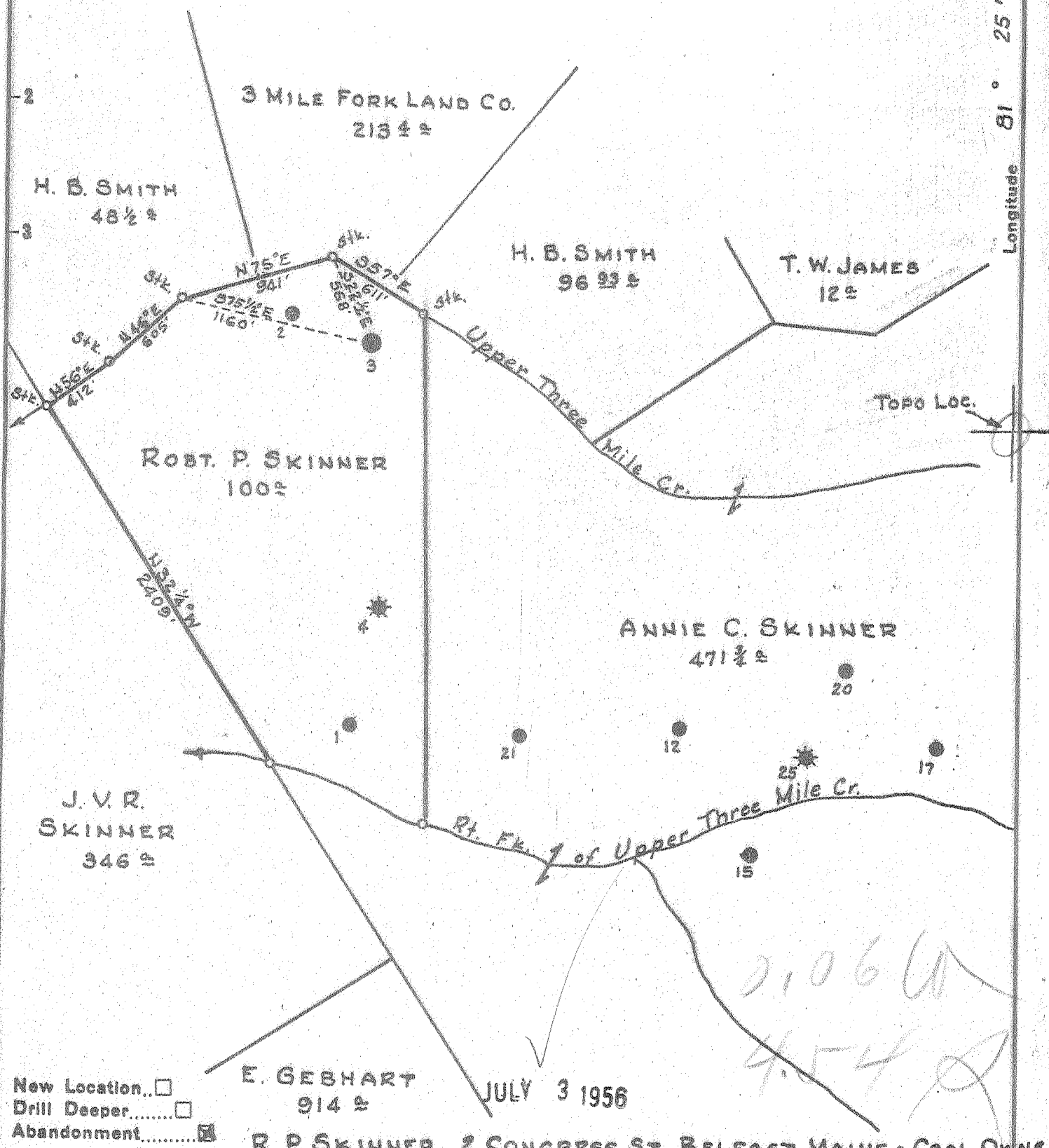


Latitude 38 30'

Longitude 81 25'



New Location   
 Drill Deeper   
 Abandonment

E. GEBHART 914 ±  
 JULY 3 1956  
 R. P. SKINNER, 2 CONGRESS ST., BELFAST, MAINE - COAL OWNER

Company	RICHARD JACKSON
Address	CHARLESTON, W. VA.
Farm	ROBERT P. SKINNER
Tract	Acres 100 Lease No.
Well (Farm) No.	3 Serial No. F-2175
Elevation (Spirit Level)	933.9
Quadrangle	CLENDENIN
County	KANAWHA District ELK
Engineer	PAUL E. JOACHIM
Engineer's Registration No.	669
File No.	72-65 Drawing No.
Date	JUNE 17, 1956 Scale 1" = 800'

STATE OF WEST VIRGINIA  
 DEPARTMENT OF MINES  
 OIL AND GAS DIVISION  
 CHARLESTON

WELL LOCATION MAP  
 FILE NO. KAN-1245-A

+ Denotes location of well on United States Topographic Maps, scale 1 to 62,500, latitude and longitude lines being represented by border lines as shown.

- Denotes one inch spaces on border line of original tracing.

6-6-217

ROBERT P. SKINNER No. 3 (F-2175) RICHARD JACKSON - KAN-1245-A



2005

STATE OF WEST VIRGINIA  
DEPARTMENT OF MINES  
OIL AND GAS DIVISION

Quadrangle Cleaveland

WELL RECORD

Permit No. 1295-A

Oil or Gas Well Oil  
(KIND)

Company Wilhelm & Jackson  
 Address Hamlin, West Virginia  
 Farm Robert P. Skinner Acres 100  
 Location (waters) \_\_\_\_\_  
 Well No. 3 (F-2775) Elev. 933.9  
 District Elk County Kanawha  
 The surface of tract is owned in fee by \_\_\_\_\_  
 Address \_\_\_\_\_  
 Mineral rights are owned by Robert P. Skinner  
St. Albans, W. Va. Address \_\_\_\_\_  
 Drilling commenced January 10, 1916  
 Drilling completed February 21, 1916  
 Date Shot Weir 2/23/16 From \_\_\_\_\_ To \_\_\_\_\_  
 With 40 etc.  
 Open Flow /10ths Water in \_\_\_\_\_ Inch  
 /10ths Merc. in \_\_\_\_\_ Inch  
 Volume \_\_\_\_\_ Cu. Ft.  
 Rock Pressure \_\_\_\_\_ lbs. \_\_\_\_\_ hrs.  
 Oil 5 bbls., 1st 24 hrs.  
 Fresh water \_\_\_\_\_ feet \_\_\_\_\_ feet  
 Salt water \_\_\_\_\_ feet \_\_\_\_\_ feet

Casing and Tubing	Used in Drilling	Left in Well	Packers
Size			Kind of Packer
16			
13			
10			Size of
8 3/4	<u>499' 6"</u>	<u>Pulled</u>	
6 3/4	<u>1615' 4"</u>	<u>1615' 4"</u>	Depth set
5 3/16			
3			Perf. top
2			Perf. bottom
Liners Used			Perf. top
			Perf. bottom

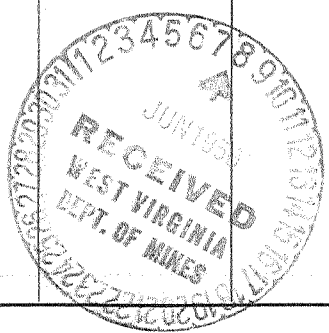
CASING CEMENTED \_\_\_\_\_ SIZE \_\_\_\_\_ No. Ft. \_\_\_\_\_ Date \_\_\_\_\_

COAL WAS ENCOUNTERED AT \_\_\_\_\_ FEET \_\_\_\_\_ INCHES  
 \_\_\_\_\_ FEET \_\_\_\_\_ INCHES \_\_\_\_\_ FEET \_\_\_\_\_ INCHES  
 \_\_\_\_\_ FEET \_\_\_\_\_ INCHES \_\_\_\_\_ FEET \_\_\_\_\_ INCHES

Formation	Color	Hard or Soft	Top	Bottom	Oil, Gas or Water	Depth Found	Remarks
Conductor			16	16			
Slate & Shells			16	250			
COAL			250	253			
Slate & Shells			253	397			
COAL			397	400			
Sand			400	410			
COAL			410	412			
Slate & Shells			412	920			
SALT SAND			920	1400			
Slate			1400	1410			
Red Rock			1410	1460			
Line			1460	1475			
Slate			1475	1485			
Red Rock			1485	1500			
Slate			1500	1508			
MAXON SAND			1508	1528			
Slate			1528	1535			
LETTLE LINE			1535	1569			
Slate			1569	1574			
Line			1574	1597			
BIG LINE			1597	1760			
Slate & Shells			1760	1800			
Red Rock			1800	1808			
Slate & Shells			1808	1860			
WEIR SAND			1860	2007			
Total Depth				2008			



Water 975' Water 1035'  
 Gas 1666'  
 Oil & Gas 1930'  
 Oil - 2nd Pay 1950'  
 Oil - 3rd Pay 2007'



MAR. 28 1957