

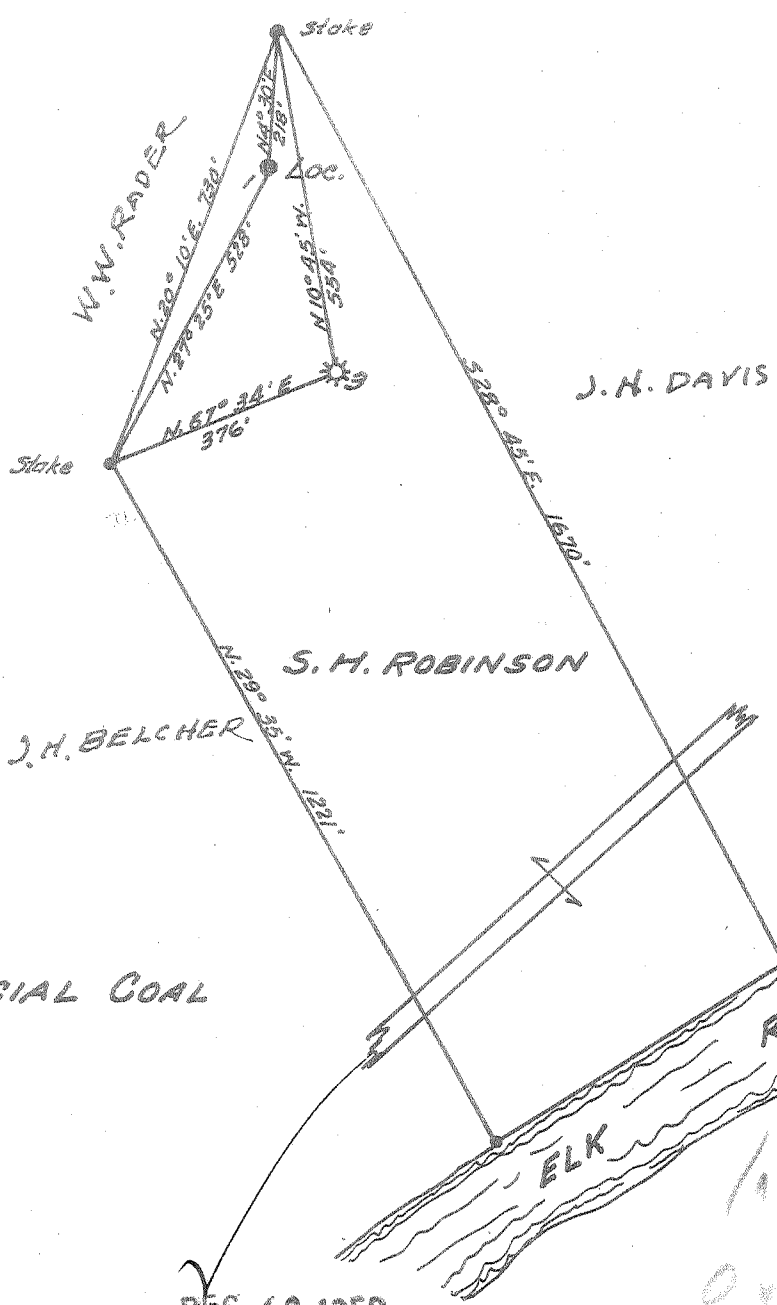
1 2 3

Latitude 38° 20'

30



Longitude 81° 15'



NO COMMERCIAL COAL

- New Location...
- Drill Deeper.....
- Abandonment.....

DEC. 12 1956

16 W  
0.6 Q

Company KREBS OIL COMPANY  
 Address CHAS. NAT. BANK BLDG.  
 Farm S.H. ROBINSON  
 Tract \_\_\_\_\_ Acres 18 Lease No. \_\_\_\_\_  
 Well (Farm) No. 1 Serial No. \_\_\_\_\_  
 Elevation (Spirit Level) 860  
 Quadrangle CLENDENIN  
 County KANAWHA District BIG SANDY  
 Engineer E. J. Keeler  
 Engineer's Registration No. 773  
 File No. \_\_\_\_\_ Drawing No. \_\_\_\_\_  
 Date 11-12-56 Scale 1" = 300'

STATE OF WEST VIRGINIA  
DEPARTMENT OF MINES  
OIL AND GAS DIVISION  
CHARLESTON

WELL LOCATION MAP  
FILE NO. KAN-1252-A

+ Denotes location of well on United States Topographic Maps, scale 1 to 62,500, latitude and longitude lines being represented by border lines as shown.

- Denotes one inch spaces on border line of original tracing.

650.250

S.H. ROBINSON No. 1

KREBS OIL CO. - KAN-1252-A



2003

STATE OF WEST VIRGINIA  
DEPARTMENT OF MINES  
OIL AND GAS DIVISION

Quadrangle Clendenin

WELL RECORD

Permit No. Kan. 1252-A

Oil or Gas Well OIL  
(KIND)

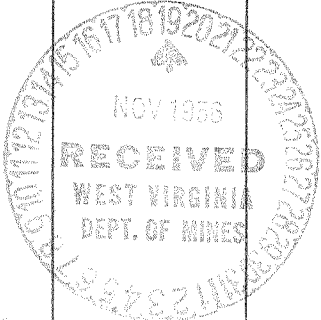
Company Krebs Oil Company  
Address Box No. 213, Charleston, W. Va.  
Farm S. H. Robertson Acres 18 1/2  
Location (waters) Elk River  
Well No. 1 Elev. 860  
District Big Sandy County Kanawha  
The surface of tract is owned in fee by Guy M. Robertson, Et Al  
Address Clendenin, W. Va.  
Mineral rights are owned by Guy M. Robertson, Etal  
Clendenin, Address West Virginia

Casing and Tubing	Used in Drilling	Left in Well	Packers
Size			Kind of Packer
16			
13			
10			Size of
8 1/4			
6 3/4	1750'	?	Depth set
5 3/16	1800'		
3			Perf. top
2	2118'		Perf. bottom
Liners Used			Perf. top
			Perf. bottom

Drilling commenced Well drilled about 1919  
Drilling completed \_\_\_\_\_  
Date Shot Unknown From \_\_\_\_\_ To \_\_\_\_\_  
With \_\_\_\_\_  
Open Flow /10ths Water in Unknown Inch  
/10ths Merc. in \_\_\_\_\_ Inch  
Volume \_\_\_\_\_ Cu. Ft.  
Rock Pressure \_\_\_\_\_ lbs. \_\_\_\_\_ hrs.  
Oil Small Oil Well \_\_\_\_\_ bbls., 1st 24 hrs.  
Fresh water \_\_\_\_\_ feet \_\_\_\_\_ feet  
Salt water \_\_\_\_\_ feet \_\_\_\_\_ feet

CASING CEMENTED \_\_\_\_\_ SIZE \_\_\_\_\_ No. Ft. \_\_\_\_\_ Date \_\_\_\_\_  
COAL WAS ENCOUNTERED AT \_\_\_\_\_ FEET \_\_\_\_\_ INCHES  
\_\_\_\_\_ FEET \_\_\_\_\_ INCHES FEET \_\_\_\_\_ INCHES  
\_\_\_\_\_ FEET \_\_\_\_\_ INCHES FEET \_\_\_\_\_ INCHES

Formation	Color	Hard or Soft	Top	Bottom	Oil, Gas or Water	Depth Found	Remarks
Surface			00	20			
Sand			20	42			
Slate			42	240			
Sand			240	270			
Lime			270	300			
Sand			300	360			
Slate			360	475			
Sand			475	525			
Slate			525	598			
Sand			598	616			
Slate			616	790			
Lime			790	850			
Slate			850	1110			
Sand			1110	1140			
Slate			1140	1155			
Salt Sand			1155	1490			
Slate			1490	1511			
Lime			1511	1530			
Slate			1530	1562			
Sand			1562	1640			
Little Lime			1640	1670			
Slate			1680	1735			
Pencil Cave			1735	1745			
Big Lime			1745	1875			
Weir Sand			2040	2118			
TOTAL DEPTH				2118			



MAR 28 1957

