

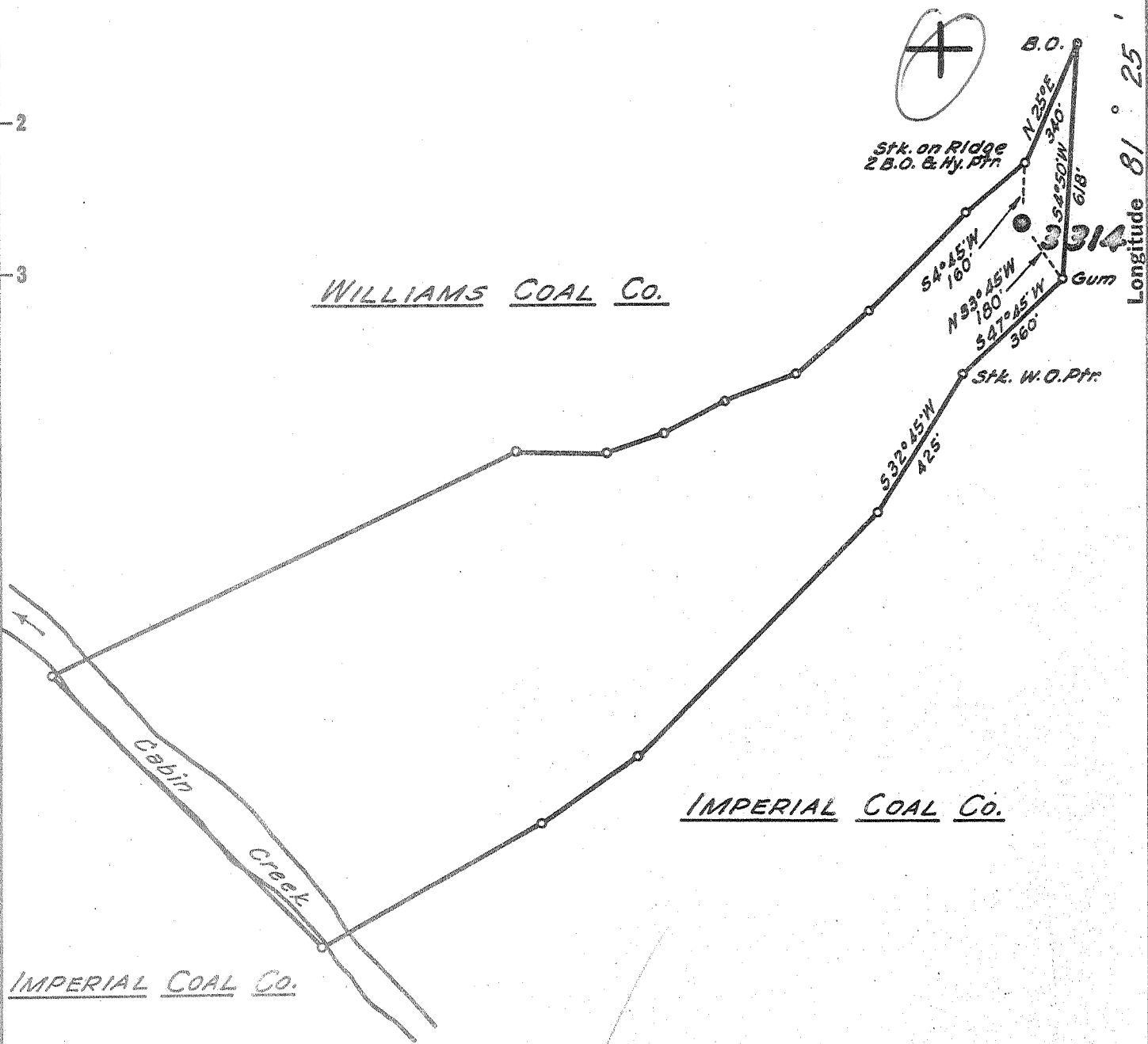
Latitude 38° 10'

Longitude 81° 25'

WILLIAMS COAL Co.

IMPERIAL COAL Co.

IMPERIAL COAL Co.



1.37 W  
1.7 Q

MAY 15 1957  
MAY 10 1957

New Location   
 Drill Deeper   
 Abandonment

Company	<u>THE PRESTON OIL CO.</u>
Address	<u>CHARLESTON. W.VA.</u>
Farm	<u>J. D. KITTINGER</u>
Tract	Acres <u>39</u> Lease No. <u>27189</u>
Well (Farm) No.	Serial No. <u>3314</u>
Elevation (Spirit Level)	<u>1472.46</u>
Quadrangle	<u>MONTGOMERY</u>
County	<u>KANAWHA</u> District <u>CABIN CR.</u>
Engineer	<u>Seibert R. Ferrell</u>
Engineer's Registration No.	<u>2529</u>
File No.	<u>45-70</u> Drawing No. _____
Date	<u>4-24-57</u> Scale <u>1"=400'</u>

STATE OF WEST VIRGINIA  
 DEPARTMENT OF MINES  
 OIL AND GAS DIVISION  
 CHARLESTON

**WELL LOCATION MAP**  
 FILE NO. KAN-1256-A

+ Denotes location of well on United States Topographic Maps, scale 1 to 62,500, latitude and longitude lines being represented by border lines as shown.  
 - Denotes one inch spaces on border line of original tracing.

K&E 158 IMPERIAL 60045  
 J. D. KITTINGER No. 3314 - PRESTON OIL CO. - 6-6-57 KAN-1256-A



9074

STATE OF WEST VIRGINIA  
DEPARTMENT OF MINES  
OIL AND GAS DIVISION

THE REGION OIL COMMISSION

WVMT 52

25

Quadrangle Montgomery

WELL RECORD

Oil or Gas Well Oil  
(KIND)

Permit No. 1726/A

Company The Preston Oil  
Address 1110 Washington St., E. Charleston, W. Va.  
Farm J. D. Kittenger Acres 39  
Location (waters) Cabin Creek  
Well No. 7714 Elev. 1472.46  
District Cabin Creek County Kanawha  
The surface of tract is owned in fee by \_\_\_\_\_  
Address \_\_\_\_\_

Casing and Tubing	Used in Drilling	Left in Well	Packers
Size			Kind of Packer
16			
18			
10"	847'	847'	Size of
8 1/2"	1860'	1860'	
6 1/2"	2524'	2524'	Depth set
5 3/16"			
3"			Perf. top
2"			Perf. bottom
Liners Used			Perf. top
			Perf. bottom

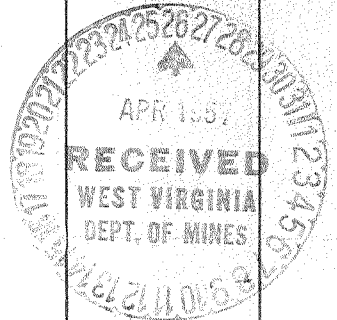
Mineral rights are owned by W.R. Blair, et al  
407 Pennsylvania Ave Address Charleston, W. Va.  
Drilling commenced July 10, 1917  
Drilling completed November 20, 1917  
Date Shot From \_\_\_\_\_ To \_\_\_\_\_  
With \_\_\_\_\_

Open Flow /10ths Water in \_\_\_\_\_ Inch  
/10ths Merc. in \_\_\_\_\_ Inch  
Volume \_\_\_\_\_ Cu. Ft.  
Rock Pressure \_\_\_\_\_ lbs. \_\_\_\_\_ hrs.  
Oil 75 to 100 bbls., 1st 24 hrs.  
Fresh water 760 feet 1540 feet  
Salt water \_\_\_\_\_ feet \_\_\_\_\_ feet

CASING CEMENTED \_\_\_\_\_ SIZE \_\_\_\_\_ No. Ft. \_\_\_\_\_ Date \_\_\_\_\_

COAL WAS ENCOUNTERED AT 320 FEET 48 INCHES  
760 FEET 24 INCHES 795 FEET 36 INCHES  
880 FEET 60 INCHES FEET INCHES

Formation	Color	Hard or Soft	Top	Bottom	Oil, Gas or Water	Depth Found	Remarks
Surface			0'	5'			
Sand			5	260			
Slate			260	320			
Coal			320	324			
Slate & Shells			324	340			
Sand			340	710			
Slate			710	760			
Coal			760	760			
Slate			762	795			
Coal			795	798			
Slate			798	815			
Sand			815	835			
Slate			835	880			
Coal			880	885			
Slate			885	900			
Sand			900	950			
Slate			950	985			
Sand			985	1030			
Slate			1030	1090			
Sand			1090	1150			
Slate			1150	1170			
Sand			1170	1200			
Slate			1200	1265			
Lime			1265	1290			
Slate & Shells			1290	1300			
Sand			1300	1365			
Slate			1365	1395			
Crampus Rock			1395	1545			
Slate & Shells			1545	1580			
Salt Sand			1580	1860			
Slate & Shells			1860	1895			
Lime			1895	1920			
Shale			1920	1940			
Slate & Shells			1940	1950			
Black Cave			1950	1980			
Shells & Slate			1980	2025			



1 bailer of water per hr. at 760'

Hole full of water at 1540'

AUG 2 1961

J. D. KITTENGER no 83/A — PRESTON OIL Co — KAN-1756-A

(Over)

Formation	Color	Hard or Soft	Top	Bottom	Oil, Gas or Water	Depth Found	Remarks
Red Rock			2025'	2100'			
Slate & Shells			2100	2235			
Red Rock			2235	2245			
Shells & Slate			2245	2325			
Maxton Sand			2325	2402			
Black Lime			2402	2495			
Pencil Cave			2495	2500			
Big Lime			2500	2705			
Big Engine			2705	2755			
Slate & Shells			2755	3120			
Lime			3120	3140			
Brown Shale			3140	3155			
Berea Grit							
Total Depth			3191'				2 bailers per hr. at 2355'

Date April 25, 19 57

APPROVED THE PRESTON OIL COMPANY, Owner

By S.R. Merrill  
(Title)  
Supt., Civil Engineering Department