

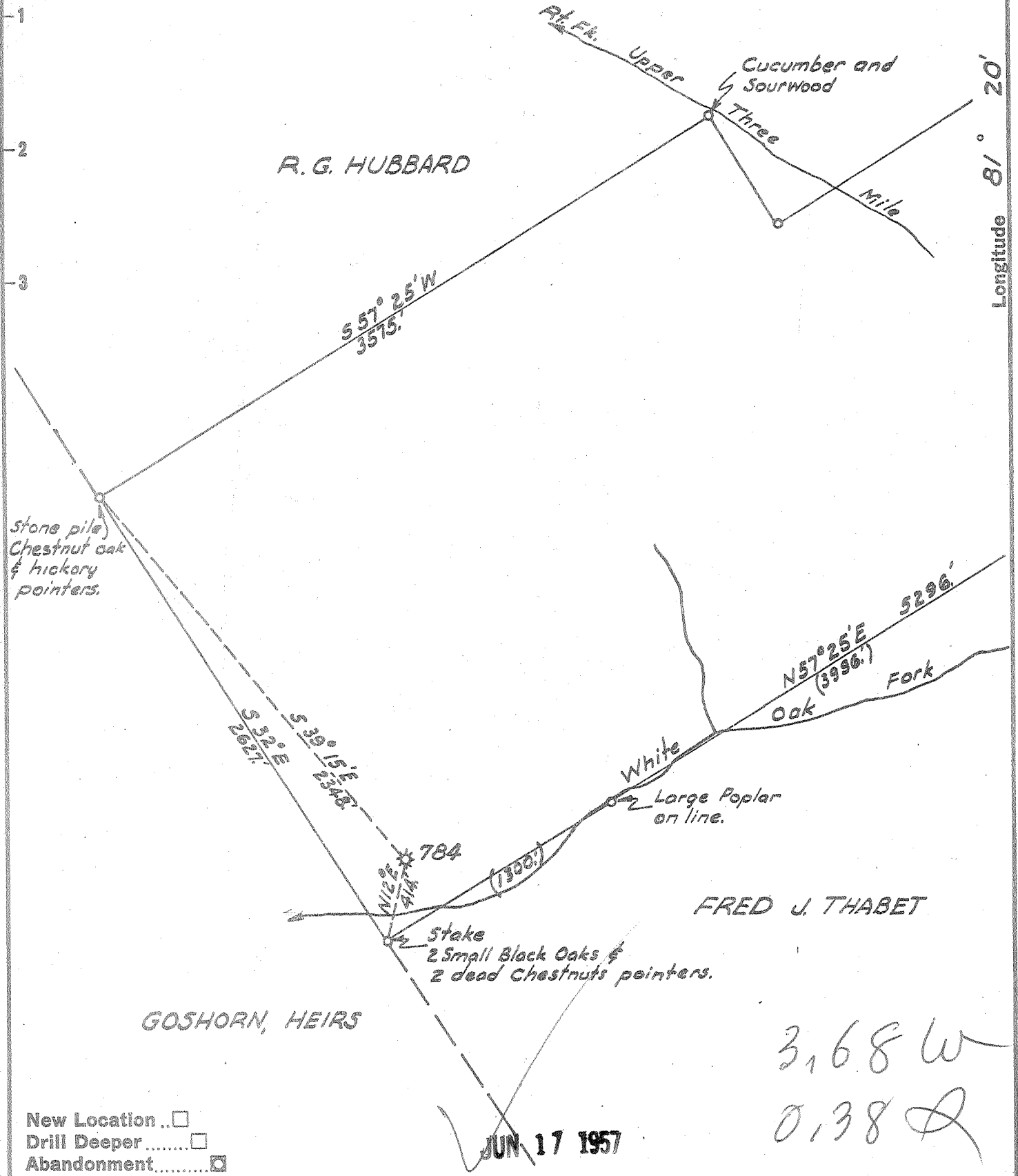
Latitude 38° 25'



W.A. McCORKLE

R.G. HUBBARD

Longitude 81° 20'



New Location   
 Drill Deeper   
 Abandonment

JUN 17 1957

Company	UNITED FUEL GAS Co.
Address	CHARLESTON, W.VA.
Farm	M.M. WILLIAMSON
Tract	Acres 455.4 Lease No. 14334
Well (Farm) No.	Serial No. 784
Elevation (Spirit Level)	1010.91'
Quadrangle	CLENDENIN
County	KANAWHA District ELK
Engineer	Paul E. Joachim
Engineer's Registration No.	669
File No.	74-63 Drawing No.
Date	MAY 27, 1957. Scale 1" = 660.'

STATE OF WEST VIRGINIA  
 DEPARTMENT OF MINES  
 OIL AND GAS DIVISION  
 CHARLESTON

WELL LOCATION MAP  
 FILE NO. KAN-1258-A

+ Denotes location of well on United States Topographic Maps, scale 1 to 62,500, latitude and longitude lines being represented by border lines as shown.

-- Denotes one inch spaces on border line of original tracing.



STATE OF WEST VIRGINIA  
DEPARTMENT OF MINES  
OIL AND GAS DIVISION

2032

WELL RECORD

Quadrangle Clendenin

Permit No. 1258-A

Oil or Gas Well Gas  
(KIND)

Company United Fuel Gas Co.  
Address P. O. Box 1273; Charleston 25, W. Va.  
Farm M. M. Williamson Acres 455.4  
Location (waters) White Oak Fork  
Well No. 784 Elev. 1010.91  
District Elk County Kanawha  
The surface of tract is owned in fee by M. M. Williamson  
Address \_\_\_\_\_  
Mineral rights are owned by United Fuel Gas Co.  
Address Charleston, W. Va.  
Drilling commenced Nov. 28, 1912  
Drilling completed Jan. 9, 1912  
Date Shot \_\_\_\_\_ From \_\_\_\_\_ To \_\_\_\_\_  
With \_\_\_\_\_

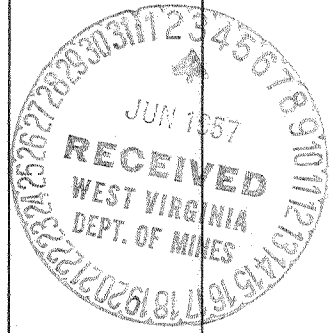
Casing and Tubing	Used in Drilling	Left in Well	Packers
Size			
16			Kind of Packer
13			
10			Size of
8 1/2			
6 5/8 x 1/2	1571'		Depth set
5 3/8 x 1/8	1700/1727	1737 1708	
3			Perf. top
2			Perf. bottom
Liners Used			Perf. top
			Perf. bottom

Open Flow \_\_\_\_\_ /10ths Water in \_\_\_\_\_ Inch  
\_\_\_\_\_ /10ths Merc. in \_\_\_\_\_ Inch  
Volume 1,400,000 Cu. Ft.  
Rock Pressure \_\_\_\_\_ lbs. \_\_\_\_\_ hrs.  
Oil \_\_\_\_\_ bbls., 1st 24 hrs.  
Fresh water \_\_\_\_\_ feet \_\_\_\_\_ feet  
Salt water 1005 feet \_\_\_\_\_ feet

CASING CEMENTED \_\_\_\_\_ SIZE \_\_\_\_\_ No. Ft. \_\_\_\_\_ Date \_\_\_\_\_

COAL WAS ENCOUNTERED AT 195 FEET 120 INCHES  
400 FEET 60 INCHES 650 FEET 36 INCHES  
\_\_\_\_\_ FEET \_\_\_\_\_ INCHES \_\_\_\_\_ FEET \_\_\_\_\_ INCHES

Formation	Color	Hard or Soft	Top	Bottom	Oil, Gas or Water	Depth Found	Remarks
Clay			0	8	Little Gas in Big Lime	1610	
Rock			8	110	More Gas in Big Lime	1665	
Black Slate			110	195	Gas in Sand	1905	
Coal			195	205	Gas in Sand	1964	
Sand			205	250			
Lime			250	350			
Sand			350	400			
Coal			400	405	Drilled by Hamilton Natural Gas Co.		
Sand			405	465	Purchd. by United Fuel Gas Company,		
Black Slate			465	615	April, 1916.		
Sand			615	630			
Black Slate			630	650	Rig (wood) standing, Condition 3		
Coal			650	653	Rock Pressure 282# 11-1-15		
Grey Slate			653	755	Casing Head 100		
Gritty Slate			755	850	Volume, Weir 1,240,000		
Sand Dunkard			850	970	Volume, Big Lime, 160,000		
Show of Oil at			860				
Lime			970	1002			
Salt Water	4 Bailers	per hour 1005			Well Repaired 1930.		
Slate			1002	1005			
Salt Sand			1005	1090			
Slate			1090	1095			
Black Lime			1095	1130			
White Lime			1130	1140			
Black Slate			1140	1160			
White Lime			1160	1190			
Black Slate			1190	1197			
Black Lime			1197	1225			
Sand			1225	1370			
Red Rock			1370	1405			
Slate			1405	1410			
Black Lime			1410	1440			
Slate			1440	1445			
Red Rock			1445	1470			
Slate			1470	1473			
Maxon Sand			1473	1500			
Black Slate			1500	1510			
Little Lime	Black		1510	1545			



DEC 6 1957

Formation	Color	Hard or Soft	Top	Bottom	Oil, Gas or Water	Depth Found	Remarks
Black Slate			1545	1547			
Lime			1547	1566			
Slate Pencil			1566	1569			
Big Lime			1569	1736			
Red Rock Lime			1736	1751			
Black Lime			1751	1761			
Red Lime			1761	1766			
Berea Grit			1766	1970			
Total Depth			1971'				

Date May 31, 1957

APPROVED UNITED FUEL GAS CO., Owner

By S. R. Ferrell  
(Title)  
Supt., Civil Engineering Department

1708.0  
680.0  
777  
1907