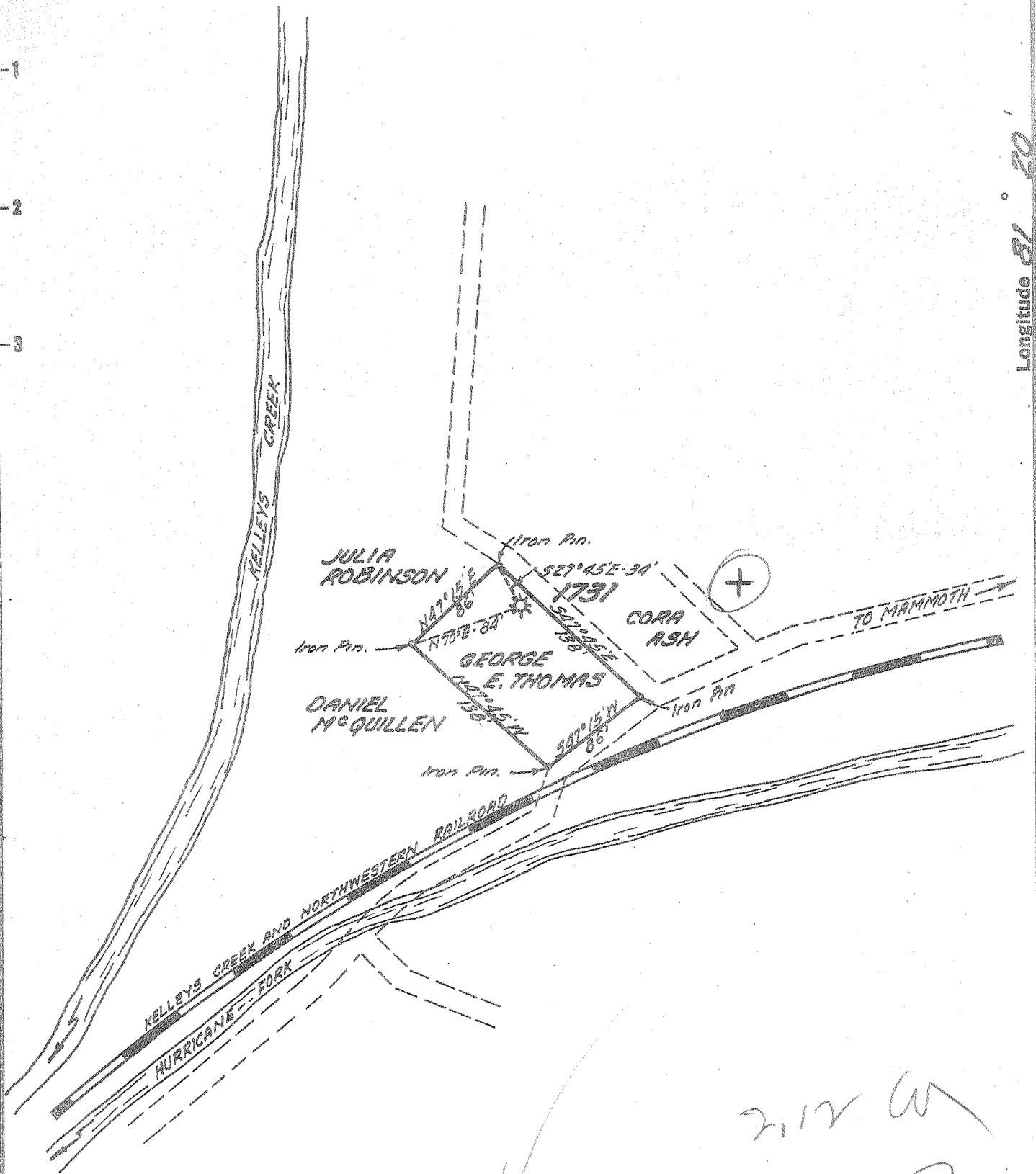


Latitude 38° 20'

Longitude 81° 20'



New Location   
 Drill Deeper   
 Abandonment

MAY 26 1958

2,120 W  
 4,880 Q

Company UNITED FUEL GAS CO.  
 Address CHARLESTON, W. VA.  
 Farm GEORGE E. THOMAS  
 Tract \_\_\_\_\_ Acres 0.25 DEED Lease No. 21780  
 Well (Farm) No. 1 Serial No. 1731  
 Elevation (Spirit Level) 736.00'  
 Quadrangle CLENDENIN  
 County KANAWHA District CARIN CREEK  
 Engineer Seybert R. Jewell  
 Engineer's Registration No. 2529  
 File No. 74-53 Drawing No. \_\_\_\_\_  
 Date 4-24-58 Scale 1" = 100'

STATE OF WEST VIRGINIA  
 DEPARTMENT OF MINES  
 OIL AND GAS DIVISION  
 CHARLESTON

WELL LOCATION MAP  
 FILE NO. KAN-1268-A

+ Denotes location of well on United States Topographic Maps, scale 1 to 62,500, latitude and longitude lines being represented by border lines as shown.

- Denotes one inch spaces on border line of original tracing.

GEORGE T. THOMAS No. 1 (1731) - U.F.G.C. - KAN-1268-A