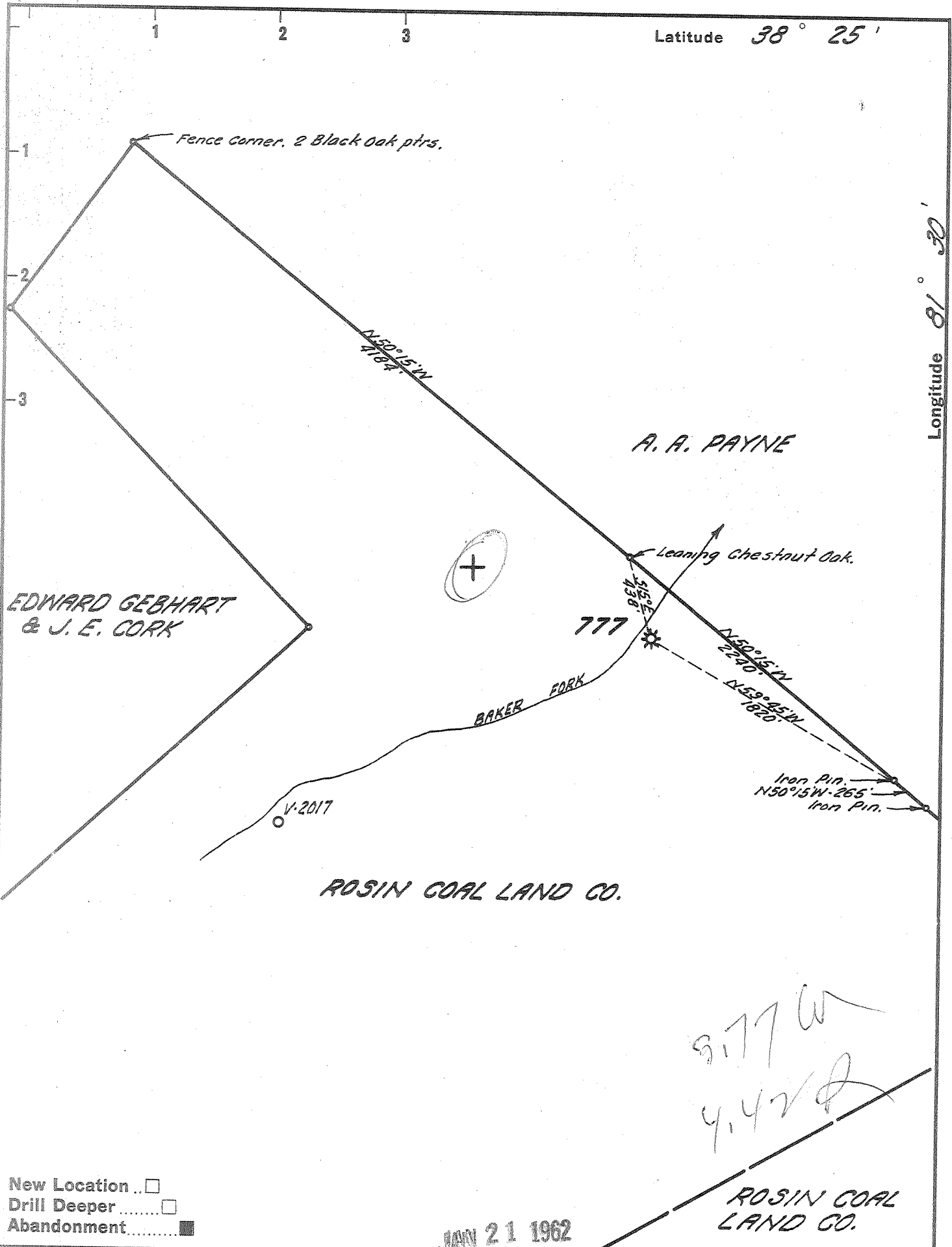


Latitude 38° 25'

Longitude 81° 30'



New Location
 Drill Deeper
 Abandonment

MAY 21 1962

Company UNITED FUEL GAS CO.
 Address CHARLESTON, W. VA.
 Farm ROSIN COAL LAND CO.
 Tract _____ Acres 835 Lease No. 14338
 Well (Farm) No. _____ Serial No. 777
 Elevation (Spirit Level) 715.00'
 Quadrangle CHARLESTON
 County KANAWHA District MALDEN
 Engineer Hubert R. Fenell
 Engineer's Registration No. 2529
 File No. 64-59 Drawing No. _____
 Date 1-4-62 Scale 1"=800'

STATE OF WEST VIRGINIA
 DEPARTMENT OF MINES
 OIL AND GAS DIVISION
 CHARLESTON

WELL LOCATION MAP

FILE NO. KAN-1325-A

+ Denotes location of well on United States Topographic Maps, scale 1 to 62,500, latitude and longitude lines being represented by border lines as shown.

- Denotes one inch spaces on border line of original tracing.

ROSIN COAL LAND CO. 777 - U.F.G. Co. -

KAN-1325-A