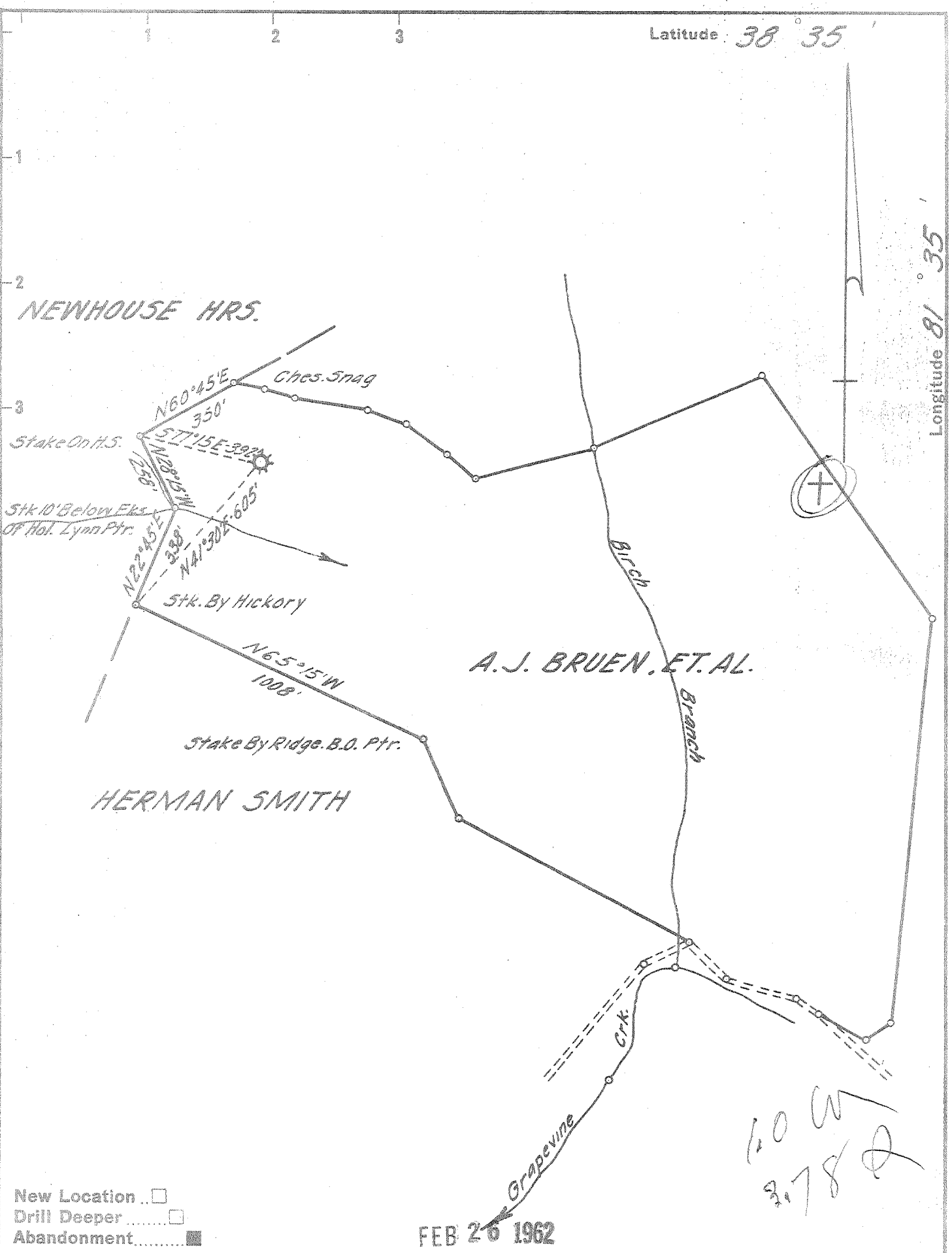


Latitude 38° 35'

Longitude 81° 35'



- New Location
- Drill Deeper
- Abandonment

FEB 26 1962

10 W
3.78

Company	UNITED FUEL GAS CO.	
Address	CHARLESTON W. VA.	
Farm	A.J. BRUEN ET AL.	
Tract	Acres 1595.99	Lease No. Pt. 860
Well (Farm) No.	Serial No. 384	
Elevation (Spirit Level)	890.0'	
Quadrangle	KENNA	
County	KANAWHA	District POCA
Engineer	Sybert R. Jewell	
Engineer's Registration No.	2529	
File No.	62-71	Drawing No.
Date	2-6-62	Scale 1" = 400'

STATE OF WEST VIRGINIA
 DEPARTMENT OF MINES
 OIL AND GAS DIVISION
 CHARLESTON

WELL LOCATION MAP
 FILE NO. KAN-1328-A

+ Denotes location of well on United States Topographic Maps, scale 1 to 62,500, latitude and longitude lines being represented by border lines as shown.

- Denotes one inch spaces on border line of original tracing.