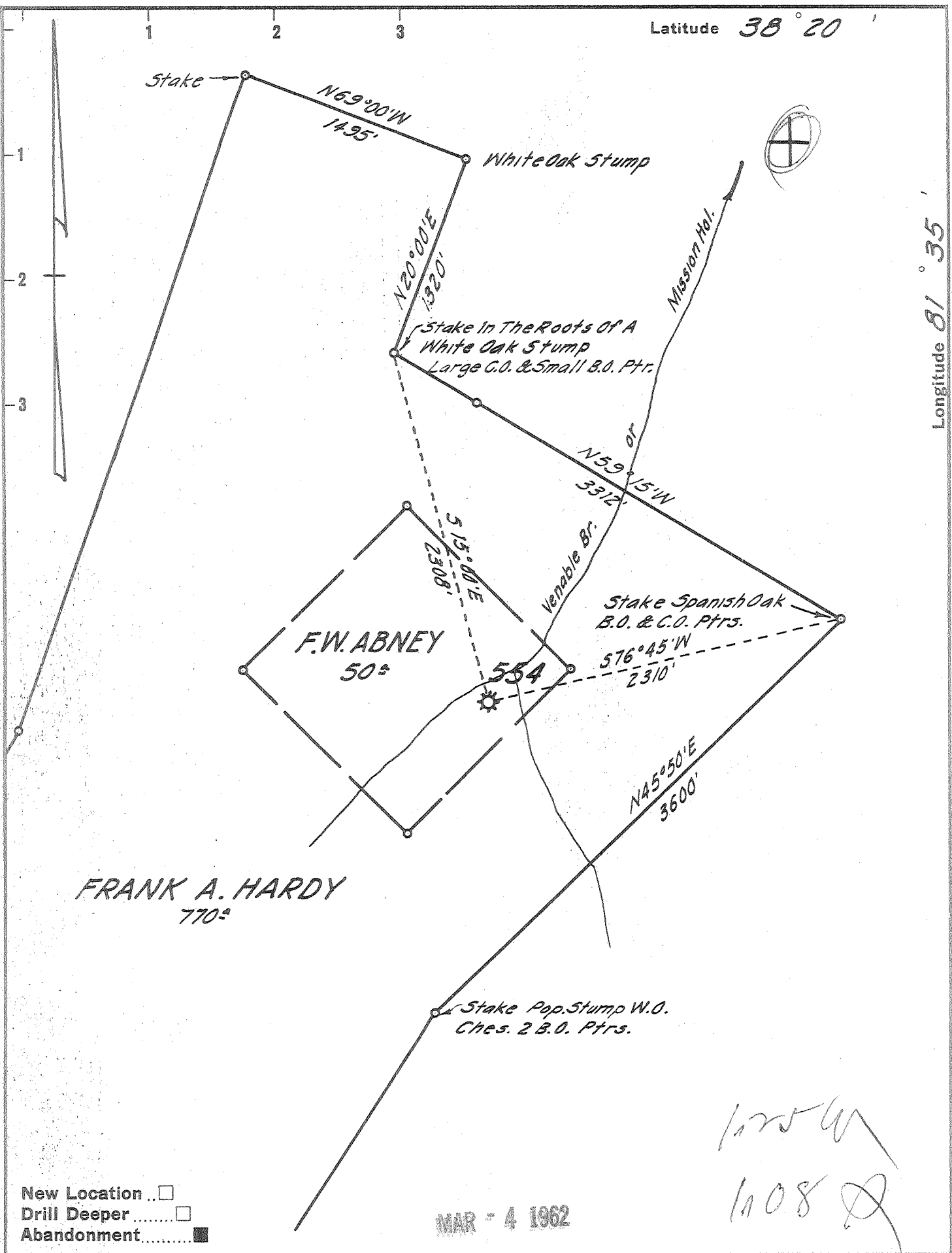


Latitude 38° 20'

Longitude 81° 35'



FRANK A. HARDY  
770±

F.W. ABNEY  
50±

MAR - 4 1962

1025 W  
1008 Q

New Location   
Drill Deeper   
Abandonment

Company UNITED FUEL GAS CO.  
 Address CHARLESTON, W. VA.  
 Farm F.W. ABNEY  
 Tract \_\_\_\_\_ Acres 50 Lease No. 11013  
 Well (Farm) No. \_\_\_\_\_ Serial No. 554  
 Elevation (Spirit Level) 690.00'  
 Quadrangle CHARLESTON  
 County KANAWHA District LOUDON  
 Engineer Seybert R. Howell  
 Engineer's Registration No. 2529  
 File No. 62-57 Drawing No. \_\_\_\_\_  
 Date 2-6-62 Scale 1"=800'

STATE OF WEST VIRGINIA  
DEPARTMENT OF MINES  
OIL AND GAS DIVISION  
CHARLESTON

WELL LOCATION MAP  
FILE NO. KAN-1329-A

+ Denotes location of well on United States Topographic Maps, scale 1 to 62,500, latitude and longitude lines being represented by border lines as shown.

- Denotes one inch spaces on border line of original tracing.