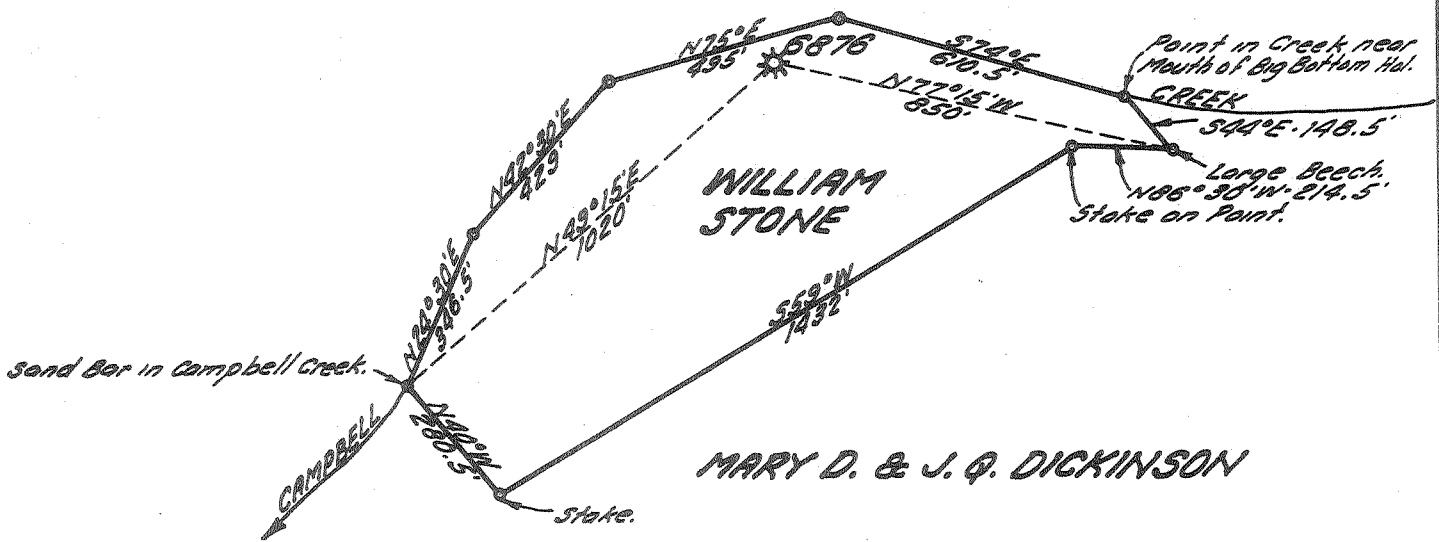


Latitude 38° 20'

Longitude 81° 25'

### TOWN OF BIG BOTTOM



New Location   
 Drill Deeper   
 Abandonment

JUN 18 1962

*Handwritten:* 4.3 W  
 0.12 ✓

Company UNITED FUEL GAS CO.  
 Address CHARLESTON, W. VA.  
 Farm WILLIAM STONE  
 Tract \_\_\_\_\_ Acres 16 Lease No. 49139  
 Well (Farm) No. 1 Serial No. 6876  
 Elevation (Spirit Level) 650.04'  
 Quadrangle GLENDENIN  
 County KANAWHA District MALDEN  
 Engineer Sybert R. Knull  
 Engineer's Registration No. 2529  
 File No. 68-57 Drawing No. \_\_\_\_\_  
 Date 5-7-62 Scale 1" = 400'

STATE OF WEST VIRGINIA  
 DEPARTMENT OF MINES  
 OIL AND GAS DIVISION  
 CHARLESTON

### WELL LOCATION MAP

FILE NO. KAN-1331-A

+ Denotes location of well on United States Topographic Maps, scale 1 to 62,500, latitude and longitude lines being represented by border lines as shown.

- Denotes one inch spaces on border line of original tracing.

*Handwritten at bottom:* WILLIAM STONE No. 1 (6876) - O.F.A. Co - KAN-1331-A