

New Location ..
 Drill Deeper
 Abandonment

JUL - 3 1962

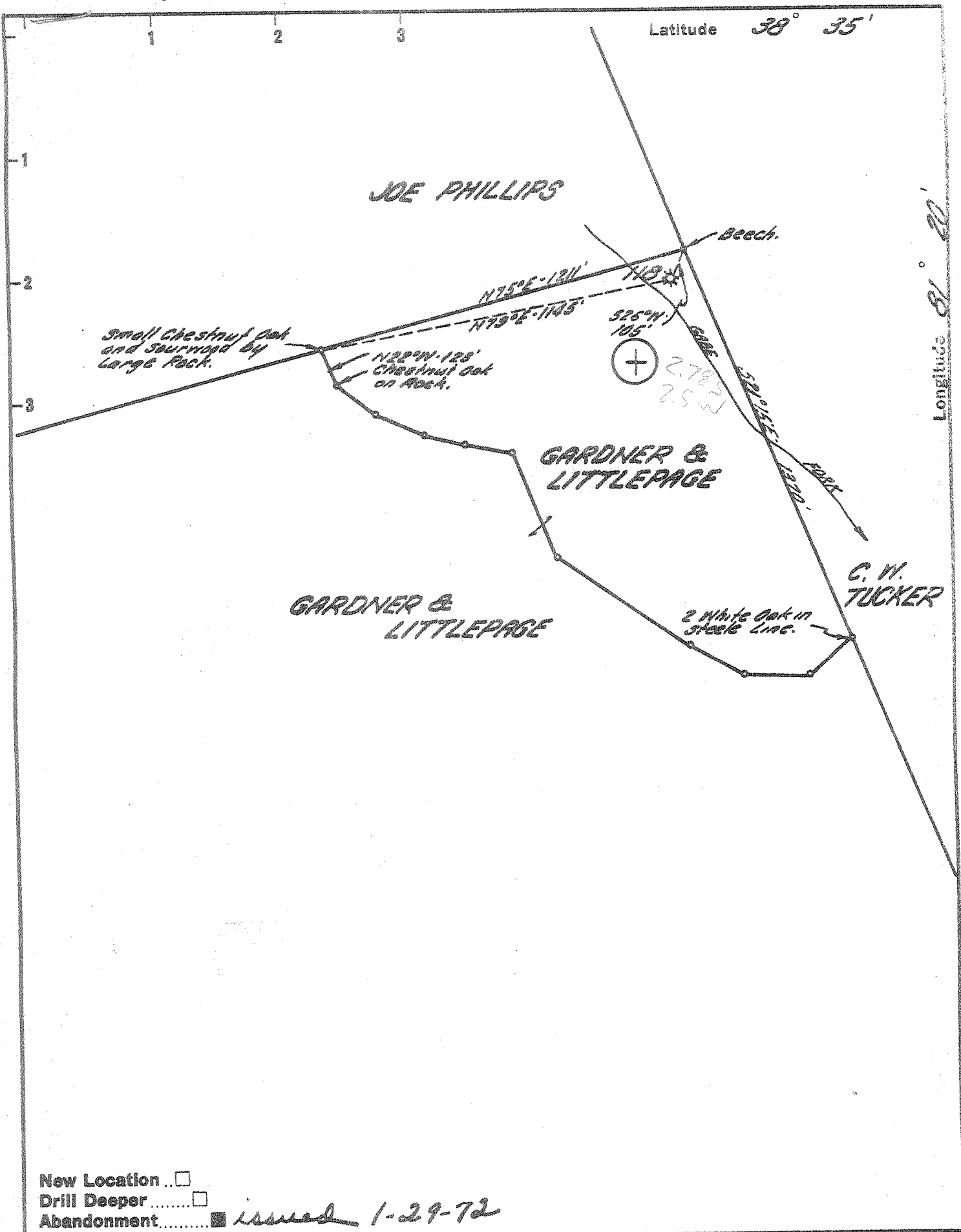
Handwritten signatures and initials:
 T. J. W.
 W. B. D.

Company UNITED FUEL GAS CO.
 Address CHARLESTON, W. VA.
 Farm GARDNER & LITTLEPAGE
 Tract _____ Acres 1600 Lease No. 592
 Well (Farm) No. _____ Serial No. 118
 Elevation (Spirit Level) 806.60'
 Quadrangle WALTON
 County KANAWHA District BIG SANDY
 Engineer Paul E. Isaacson
 Engineer's Registration No. 669
 File No. 74-71 Drawing No. _____
 Date 6-5-62 Scale 1" = 400'

STATE OF WEST VIRGINIA
 DEPARTMENT OF MINES
 OIL AND GAS DIVISION
 CHARLESTON

WELL LOCATION MAP
 FILE NO. KAN-1332-A

+ Denotes location of well on United States Topographic Maps, scale 1 to 62,500, latitude and longitude lines being represented by border lines as shown.
 - Denotes one inch spaces on border line of original tracing.



New Location
 Drill Deeper
 Abandonment issued 1-29-72

Company UNITED FUEL GAS CO. Trans. Corp. *Columbia Gas*
 Address CHARLESTON, W. VA.
 Farm GARDNER & LITTLEPAGE
 Tract _____ Acres 1600 Lease No. 592
 Well (Farm) No. _____ Serial No. 118
 Elevation (Spirit Level) 806.60'
 Quadrangle WALTON SC
 County KANAWHA District BIG SANDY
 Engineer Paul C. [Signature]
 Engineer's Registration No. 659
 File No. 74-71 Drawing No. _____
 Date 6-5-62 Scale 1" = 400'

STATE OF WEST VIRGINIA
 DEPARTMENT OF MINES
 OIL AND GAS DIVISION
 CHARLESTON

WELL LOCATION MAP
 FILE NO. KAN-1332-A

+ Denotes location of well on United States Topographic Maps, scale 1 to 62,500, latitude and longitude lines being represented by border lines as shown.

- Denotes one inch spaces on border line of original tracing.

47-039