

Latitude 38° 35'

Longitude 81° 30'



D.P. JONES

JOHN DODD

C.B. PRICE

A.W. PRICE

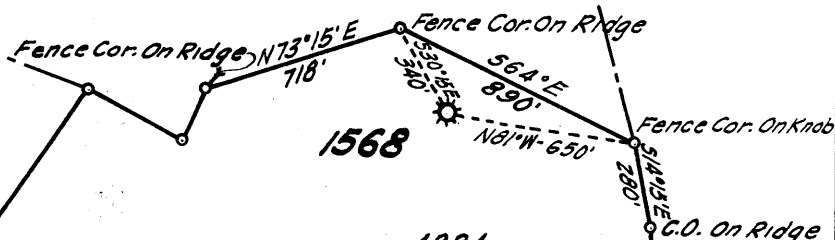
1568

* 4994
Len 779

STRATTON JONES

EMMA PRICE

LICK BR.
LEATHERWOOD CRK.



New Location
Drill Deeper
Abandonment

OCT - 1 1962

0.15 W
3.0 D

Company UNITED FUEL GAS CO.
 Address CHARLESTON, W. VA.
 Farm A.W. PRICE
 Tract _____ Acres 95 Lease No. 19455
 Well (Farm) No. _____ Serial No. 1568
 Elevation (Spirit Level) 1068.11
 Quadrangle KENNA
 County KANAWHA District POCA
 Engineer Paul E. Joachims
 Engineer's Registration No. 669
 File No. 68-71 Drawing No. _____
 Date AUG. 21, '62 Scale 1" = 660'

STATE OF WEST VIRGINIA
DEPARTMENT OF MINES
OIL AND GAS DIVISION
CHARLESTON

WELL LOCATION MAP
FILE NO. KAN-1335-A

+ Denotes location of well on United States Topographic Maps, scale 1 to 62,500, latitude and longitude lines being represented by border lines as shown.

- Denotes one inch spaces on border line of original tracing.