

New Location   
 Drill Deeper   
 Abandonment

JAN 17 1963

Company	PACK & JACKSON
Address	HAMLIN, W. VA.
Farm	V. M. & J. A. DODD
Tract	Acres 60 <sup>3</sup> / <sub>8</sub> Lease No.
Well (Farm) No.	1 Serial No. F7472
Elevation (Spirit Level)	861
Quadrangle	WALTON
County	KANAWHA District ELK
Engineer	Paul E. Joachim
Engineer's Registration No.	669
File No.	68-71 Drawing No.
Date	Scale 1" = 400'

STATE OF WEST VIRGINIA  
 DEPARTMENT OF MINES  
 OIL AND GAS DIVISION  
 CHARLESTON

WELL LOCATION MAP

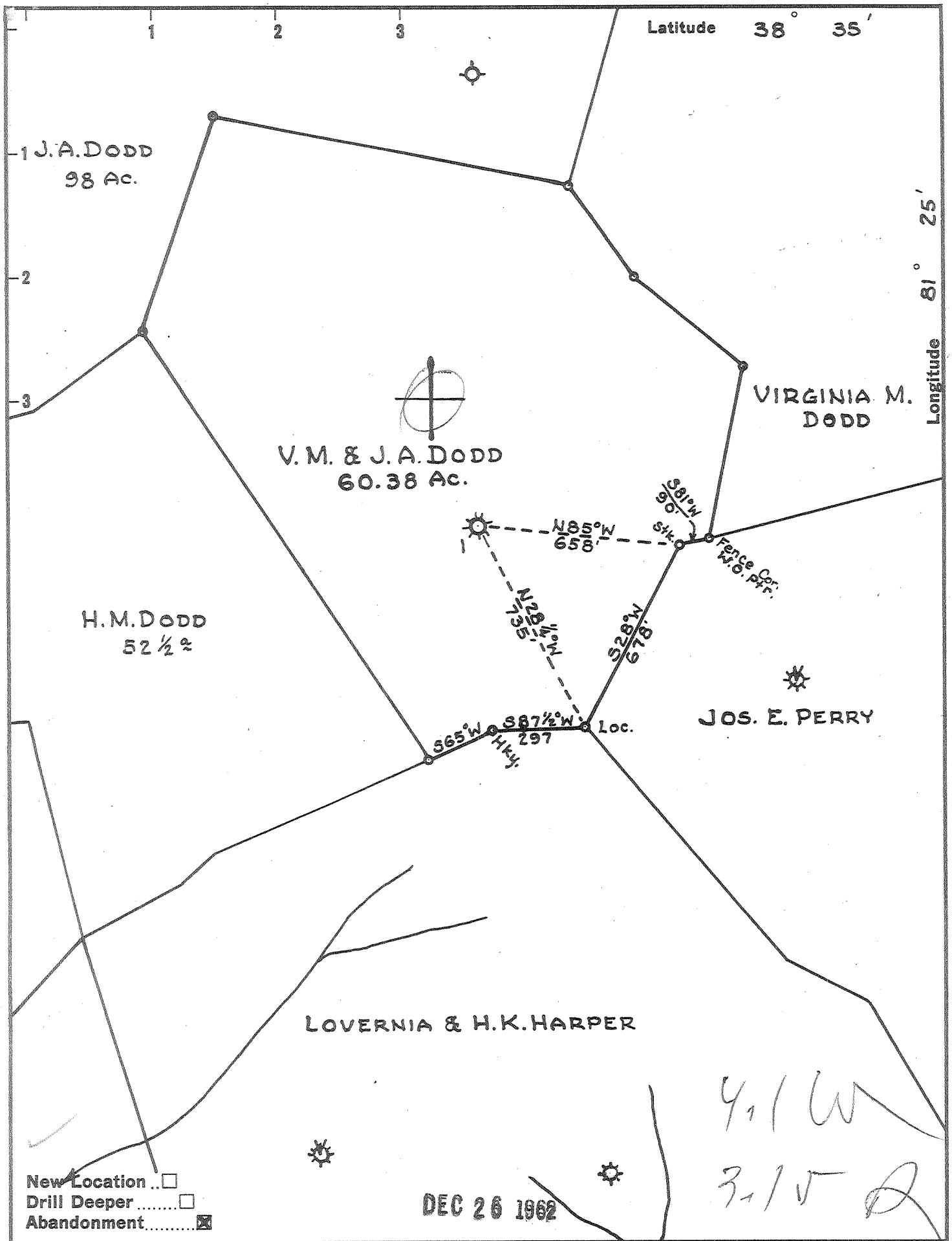
FILE NO. KAN-1337-A

CORRECTED PERMIT NO.

+ Denotes location of well on United States Topographic Maps, scale 1 to 62,500, latitude and longitude lines being represented by border lines as shown.

- Denotes one inch spaces on border line of original tracing.

V.M. & J.A. DODD No. 1 (F-7472) - PACK & JACKSON - KAN-1337-A



Company PACK & JACKSON  
 Address HAMLIN, W. VA.  
 Farm V. M. & J. A. DODD  
 Tract \_\_\_\_\_ Acres 60<sup>3/8</sup> Lease No. \_\_\_\_\_  
 Well (Farm) No. 1 Serial No. F7472  
 Elevation (Spirit Level) 861  
 Quadrangle WALTON  
 County KANAWHA District ELK  
 Engineer Paul E. Joachims  
 Engineer's Registration No. 669  
 File No. 68-71 Drawing No. \_\_\_\_\_  
 Date \_\_\_\_\_ Scale 1" = 400'

STATE OF WEST VIRGINIA  
 DEPARTMENT OF MINES  
 OIL AND GAS DIVISION  
 CHARLESTON

**WELL LOCATION MAP**  
 FILE NO. KAN-635-A

+ Denotes location of well on United States Topographic Maps, scale 1 to 62,500, latitude and longitude lines being represented by border lines as shown.

- Denotes one inch spaces on border line of original tracing.

V.M. & J.A. DODD 00-1 (F-7472) - PACK & JACKSON - KAN-635-A