

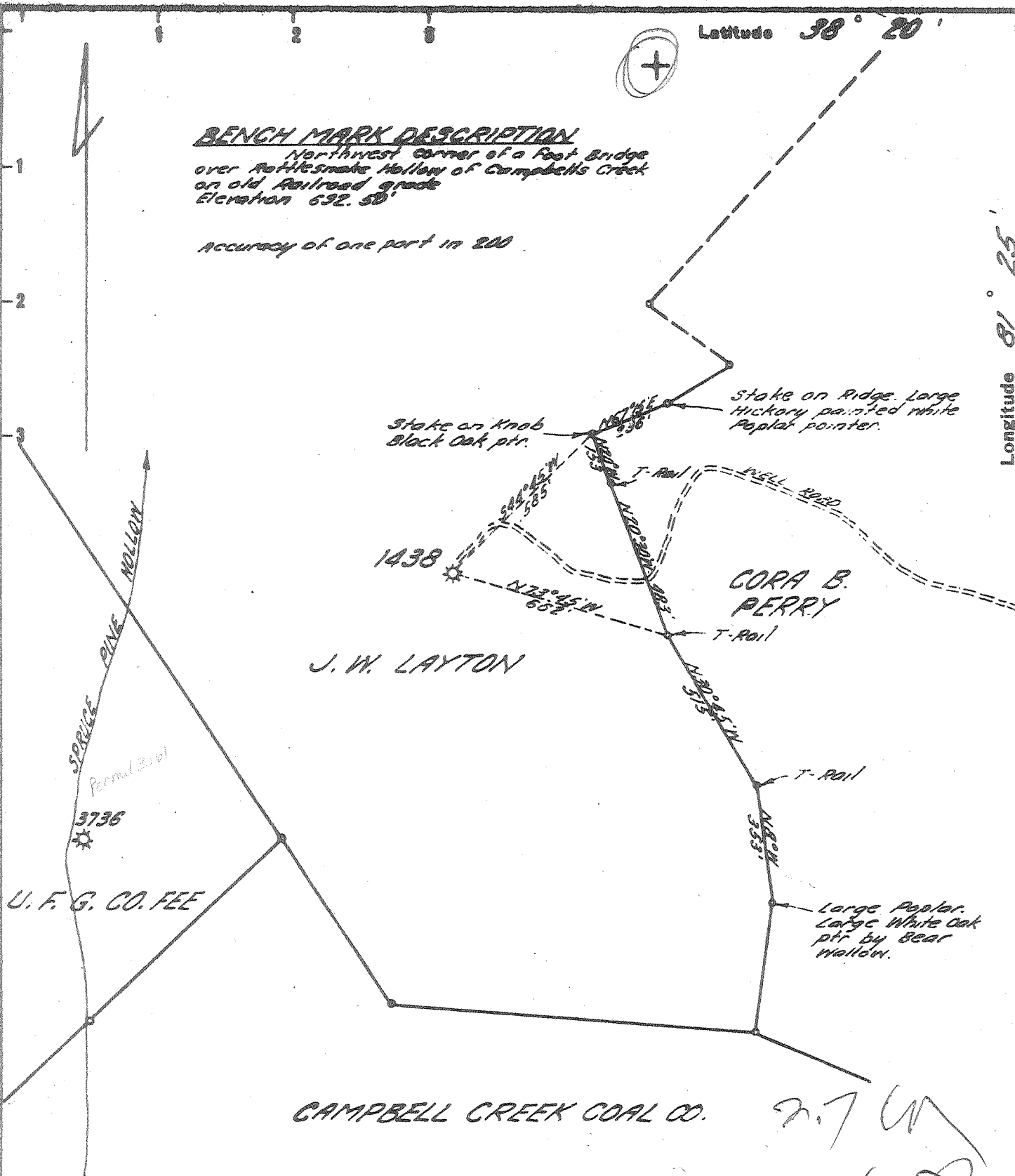
Latitude 38° 20'

Longitude 81° 25'

BENCH MARK DESCRIPTION

Northwest corner of a Foot Bridge
over Rattlesnake Hollow of Campbell's Creek
on old Railroad grade
Elevation 692.50'

Accuracy of one part in 200



I, the undersigned, hereby certify that this map is correct to the best of my knowledge and belief and shows all the information required by Paragraph 6 of the rules and regulations of the oil and gas section of the mining laws of West Virginia.

- New Location
- Drill Deeper
- Abandonment

Robert R. Stowell

Company UNITED FUEL GAS CO.

Address CHARLESTON, W. VA.

Farm J. W. LAYTON

Tract _____ Acres 444 Lease No. 1000

Well (Farm) No. 1 Serial No. 1438

Elevation (Spirit Level) 1168.52'

Quadrangle CLENDENIN

County KANAWHA District MALDEN

Engineer Robert R. Stowell

Engineer's Registration No. 2529

File No. 70-57 Drawing No. _____

Date JULY 5, 1963 Scale 1" = 400'

JUL 29 1963

STATE OF WEST VIRGINIA
DEPARTMENT OF MINES
OIL AND GAS DIVISION
CHARLESTON

WELL LOCATION MAP

FILE NO. KAN-13.42-A

- + Denotes location of well on United States Topographic Maps, scale 1 to 62,500, latitude and longitude lines being represented by border lines as shown.
- Denotes one inch spaces on border line of original tracing.