

2 3

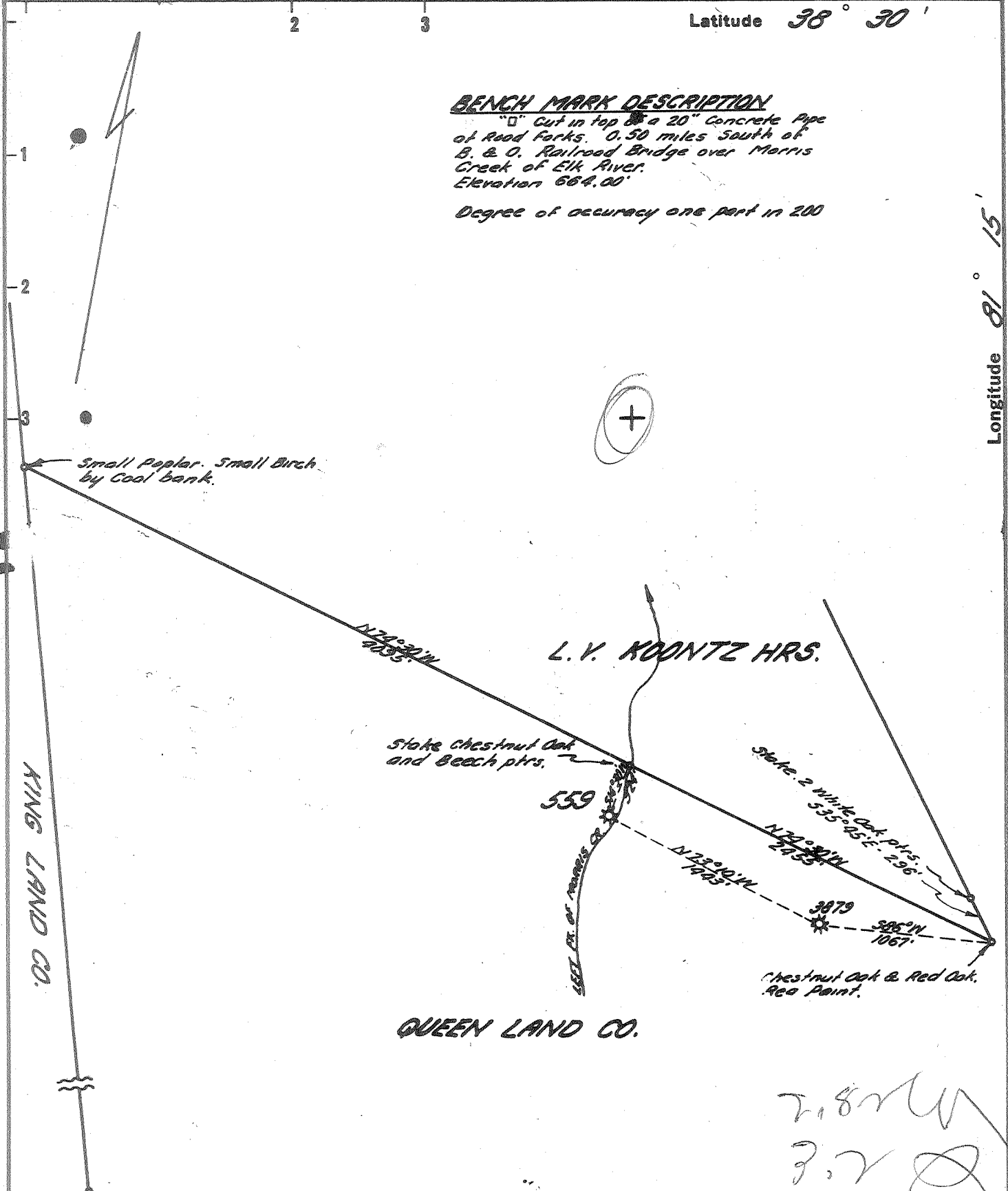
Latitude 38° 30'

Longitude 81° 15'

BENCH MARK DESCRIPTION

"0" Cut in top of a 20" Concrete Pipe of Reed Forks, 0.50 miles South of B. & O. Railroad Bridge over Morris Creek of Elk River. Elevation 664.00'

Degree of accuracy one part in 200



New Location
 Drill Deeper
 Abandonment

I, the undersigned, hereby certify that the map is correct to the best of my knowledge as of 1963 and I have all the information required by Paragraph 10 of the rules and regulations of the oil and gas section of the mining code of West Virginia.

Sybert R. Ferrell

Company UNITED FUEL GAS CO.
 Address CHARLESTON, W.VA.
 Farm QUEEN LAND CO.
 Tract _____ Acres 1052 Lease No. 4590
 Well (Farm) No. _____ Serial No. 559
 Elevation (Spirit Level) 858.63'
 Quadrangle CLENDENIN
 County KANAWHA, District BIG SANDY
 Engineer Sybert R. Ferrell
 Engineer's Registration No. 2529
 File No. 78-65 Drawing No. _____
 Date 6-3-63 Scale 1" = 800'

STATE OF WEST VIRGINIA
 DEPARTMENT OF MINES
 OIL AND GAS DIVISION
 CHARLESTON

WELL LOCATION MAP

FILE NO. KAN-1343-A

Kan-31343

+ Denotes location of well on United States Topographic Maps, scale 1 to 62,500, latitude and longitude lines being represented by border lines as shown.

- Denotes one inch spaces on border line of original tracing.