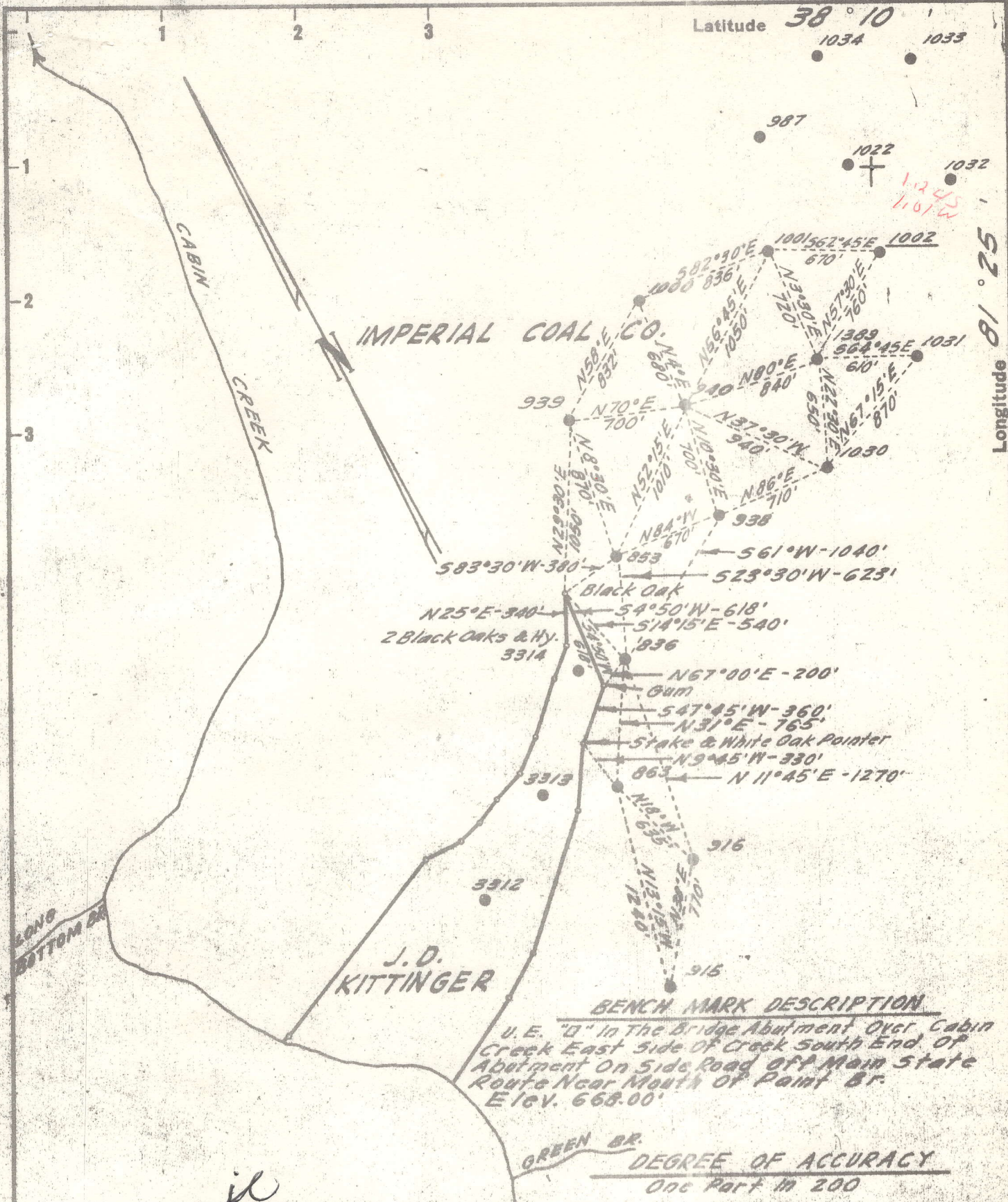


Latitude **38° 10'**
 1034 1033

Longitude **81° 52' 18"**



fil

I, the undersigned hereby certify that this map is correct to the best of my knowledge and belief and shows all the information required by paragraph 6 of the rules and regulations of the oil and gas section of the mining laws of West Virginia.

Sybert R. Jewell

New Location
 Drill Deeper
 Abandonment

Company THE PRESTON OIL CO.
 Address CHARLESTON, W. VA.
 Farm IMPERIAL COAL CO.
 Tract _____ Acres 5400 Lease No. 2975
 Well (Farm) No. _____ Serial No. 1002
 Elevation (Spirit Level) 1232.07'
 Quadrangle MONTGOMERY-WC
 County KANAWHA District CABIN CRK
 Engineer Sybert R. Jewell
 Engineer's Registration No. 2529
 File No. 72-45 Drawing No. _____
 Date SEPT. 17, 1964 Scale 1" = 800'

STATE OF WEST VIRGINIA
 DEPARTMENT OF MINES
 OIL AND GAS DIVISION
 CHARLESTON

WELL LOCATION MAP
 FILE NO. KAK-1359-A

+ Denotes location of well on United States Topographic Maps, scale 1 to 62,500, latitude and longitude lines being represented by border lines as shown.

— Denotes one inch spaces on border line of original tracing.

66290

1359A

Cabin Creek District, Kanawha County, W. Va.
 By United Fuel Gas Co., Charleston, W. Va.
 Commenced May 25, 1918; completed Aug. 22, 1918.
 Drillers: C. C. Murry, C. M. Woodwell.
 10" casing, 501'; 8 $\frac{1}{4}$ ", 1650' (pulled); 6 $\frac{5}{8}$ ", 2308'; 2" tubing.
 Oil, pumped, Est. 100 bbls., 1st 24 hrs.
 Steel-line measurements at 2278, 2931, 2955, and 2969'.

	Top.	Bottom.	Thickness.
Sand and slate	0	- 116	116
Coal	116	- 121	5
Sand and slate	121	- 280	159
Coal	280	- 282	2
Slate	282	- 290	8
Sand	290	- 367	77
Coal	367	- 370	3
Slate	370	- 400	30
Sand	400	- 460	60
Coal	460	- 465	5
Sand and slate	465	- 1167	702
Grampus Sand	1167	- 1295	128
Slate and shells	1295	- 1365	70
Salt Sand	1365	- 1515	50
Slate	1515	- 1530	15
Salt Sand (hole full water, 1600')	1530	- 1626	96
Slate	1626	- 1650	24
Lime	1650	- 1665	15
Slate cave	1665	- 1816	151
Red rock	1816	- 1843	27
Lime	1843	- 1880	37
Red rock	1880	- 2010	130
Sand	2010	- 2030	20
Lime	2030	- 2060	30
Maxton Sand	2060	- 2180	120
Black lime	2180	- 2215	35
Slate	2215	- 2246	31
Little Lime	2246	- 2266	20
Pencil Cave	2266	- 2278	12
Big Lime	2278	- 2475	197
Big Injun Sand	2475	- 2525	50
Slate	2525	- 2630	105
Weir Sand	2630	- 2660	30
Slate	2660	- 2931	271
Berea Sand	2931	- 2968	37
Total depth		2969	
Revised record:			
Top Big Lime	2278		
Berea Sand (oil pay, 2955-2968')	2931	- 2968	37
Total depth		2969	

KAN-1359-A

WELL RECORD

997

UNITED FUEL GAS

COMPANY

SERIAL WELL NO. 1002

MAP SQUARE

NAME Imperial Coal Company

WELL NO. 23 LEASE NO. _____ ACRES _____

TOWNSHIP OR DISTRICT Cabin Creek

COUNTY Kanawha

FIELD _____

STATE West Virginia

RIG _____ Building Cost _____

Contractor _____

Commenced _____ 19____, Completed _____ 19____

DRILLING _____ Cost per Ft. _____

Contractor _____

Address _____

Commenced May 25, 1918, Completed Aug. 22, 1918

DRILLERS C. C. Murry TOOL DRESSERS _____

C. M. Goodwell _____

CASING AND TUBING		
SIZE	USED IN DRILLING	LEFT IN WELL
16		
13		
10	501'	501'
8 1/4	1650'	None
6 3/8	2308'	2308'
5 3/16		
4 7/8		
4		
3		
2		

WELL TUBED

Date _____

2 in. Tubing or Casing

Size of Packer _____

Kind of Packer _____

1st Perf. Set _____ from _____

2nd Perf. Set _____ from _____

TEST BEFORE SHOT

_____ of Water in _____ inch

10ths. _____ of Merc. in _____ inch

10ths. Volume _____ Cu. Ft.

TEST AFTER SHOT

_____ of Water in _____ inch

10ths. _____ of Merc. in _____ inch

10ths. Volume _____ Cu. Ft.

Rock Pressure _____

Date Shot _____

Size of Torpedo _____

Oil Flowed _____ bbls. 1st 24 hours

Oil Pumped ^{Est} 100 bbls. 1st 24 hours

Well Abandoned and Plugged _____ 19____

DRILLER'S RECORD

FORMATION	TOP	BOTTOM	THICKNESS	REMARKS
Sand & Slate	0	116	116	
Coal	116	121	5	
Sand & Slate	121	280	161	<i>NG</i>
Coal	280	282	2	Revised record.
Slate	282	290	8	
Sand	290	367	77	Top big lime 2278
Coal	<i>3</i> 267	370	3	Berea sand 2931-2968
Slate	370	400	30	Oil pay 2955-2968
Sand	400	460	60	Total depth 2969
Coal	460	465	5	
Sand & Slate	465	1167	702	Hole full water - 1600'.
Grampus sand	1167	1295	128	
Slate & shells	1295	1365	70	Steel line measurements;
Salt sand	1365	1515	50	2278 - 2931 - 2955 - 2969.
Slate	1515	1530	15	
Salt sand	1530	1626	96	
Slate	1626	1650	24	
Lime	1650	1665	15	
Slate cave	1665	1816	151	
Red rock	1816	1843	27	
Lime	1843	1880	37	
Red Rock	1880	2010	130	
Sand	2010	2030	20	
Lime	2030	2060	30	
Maxon Sand	2060	2180	120	
Black lime	2180	2215	35	
Slate	2215	2246	31	
Little lime	2246	2266	20	
Pencil cave	2266	2278	12	
Big lime	2278	2475	197	
Big Injun sand	2475	2525	50	
Slate	2525	2630	105	
Weir sand	2630	2660	30	
Slate	2660	2931	271	
Berea sand	2931	2968	37	
Total depth		<u>2969</u>		