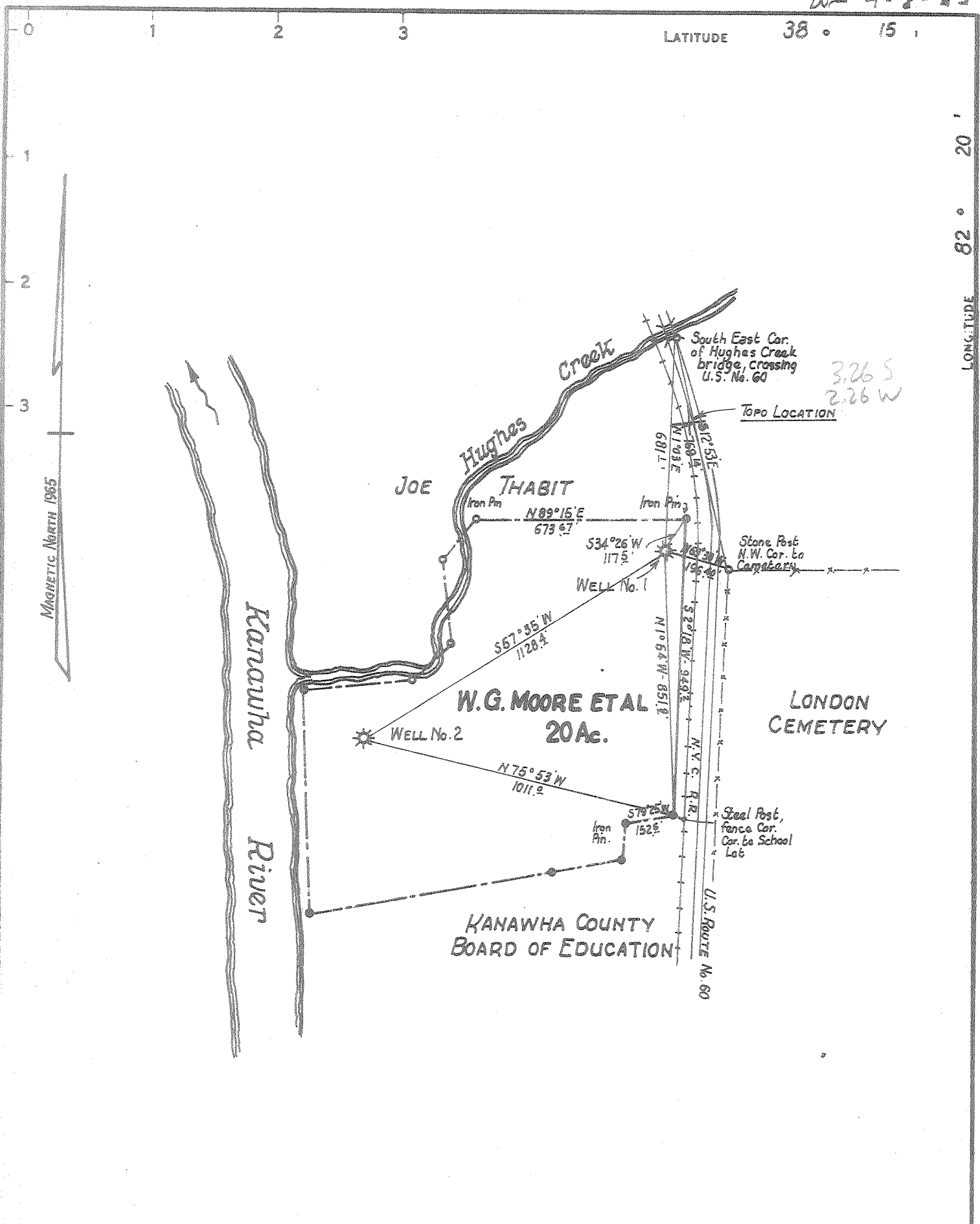


W 9-8-65



CERTIFICATE

"I, the undersigned, hereby certify that this map is correct to the best of my knowledge and belief and shows all the information required by paragraph 6 of the rules and regulations of the oil and gas section of the mining laws of West Virginia."
 Minimum degree of accuracy is one part in 200

Signed W.D. [Signature]

(N.B. No. 89A Pg. 14)

- NEW LOCATION
- RECONDITION
- DRILL DEEPER
- ABANDONMENT

COMPANY	FISHER GAS COMPANY		
ADDRESS	302 JARVIS STREET, CREDE, W.VA.		
FARM	W.G. MOORE ETAL		
MAP	ACRES	20	LEASE NO.
WELL (FARM) NO.	2	SERIAL NO.	
ELEVATION (SPIRIT LEVEL)	625.8'		
QUADRANGLE	MONTGOMERY - N.C.		
COUNTY	KANAWHA	DISTRICT	CABIN CREEK
POINT OF PROVEN ELEVATION	U.S.G.S. DATA - U.S. ROUTE No. 60 CROSSING HUGHES CREEK FLOOR ELEV. 629.0		
FILE NO.	DATE	DRAWING NO.	SCALE
	August 28, 1965		1" = 400'

STATE OF WEST VIRGINIA
DEPARTMENT OF MINES
OIL AND GAS DIVISION
CHARLESTON
WELL LOCATION MAP
FILE NO. <u>Ken-1377-A</u>
+ DENOTES LOCATION OF WELL ON UNITED STATES TOPOGRAPHIC MAPS. SCALE 1 TO 62,500. LATITUDE AND LONGITUDE LINES BEING REPRESENTED BY BORDER LINES AS SHOWN.
- DENOTES ONE INCH SPACES ON BORDER LINE OF ORIGINAL TRACING.