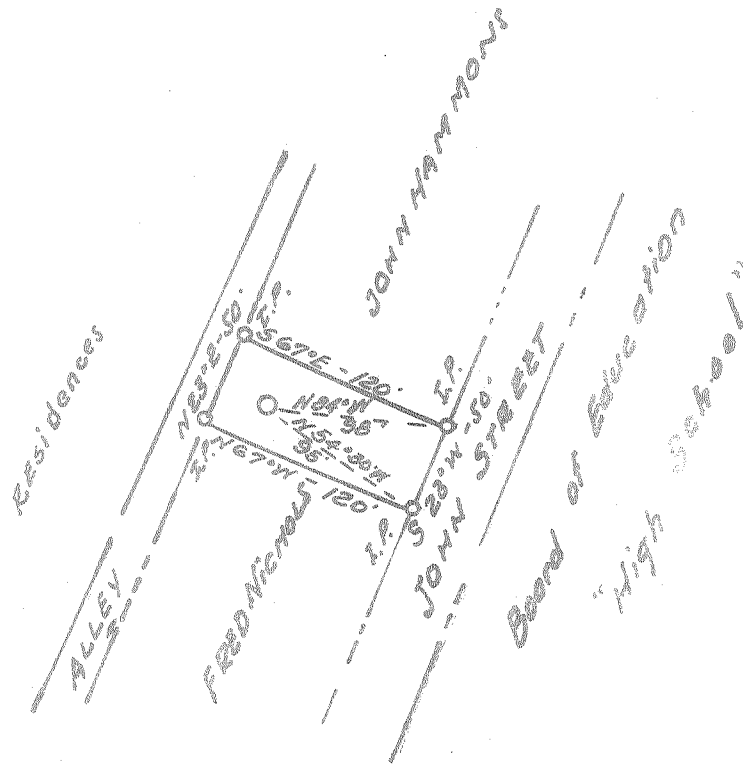


0  
1  
2  
3



CONSTITUTE 0 25  
 212  
 TAP 10.67W

Town of Cedar Grove

**CERTIFICATE**

"I, the undersigned, hereby certify that this map is correct to the best of my knowledge and belief and shows all the information required by paragraph 6 of the rules and regulations of the oil and gas section of the mining laws of West Virginia."  
 Minimum degree of accuracy is one part in 200

Signed Roy Boston # 3204

- NEW LOCATION
- RECONDITION
- DRILL DEEPER
- ABANDONMENT

COMPANY Cobot Corporation  
 ADDRESS Box 1473 Charleston W Va  
 FARM M.F. Spruce  
 MAP 6000 Ft LEASE NO. 4-24  
 WELL (FARM) NO. 1 SERIAL NO. 174  
 ELEVATION (SPIRIT LEVEL) 619.00  
 QUADRANGLE Montgomery - NW  
 COUNTY Marion DISTRICT Cabin Creek  
 POINT OF PROVEN ELEVATION USGS B.M. Watson Branch  
Elev. 619.00  
 FILE NO. \_\_\_\_\_ DRAWING NO. \_\_\_\_\_  
 DATE 7-11-66 SCALE 1" = 100'

STATE OF WEST VIRGINIA  
 DEPARTMENT OF MINES  
 OIL AND GAS DIVISION  
 CHARLESTON  
 WELL LOCATION MAP

FILE NO. MAN-1385-A

† DENOTES LOCATION OF WELL ON UNITED STATES TOPOGRAPHIC MAPS. SCALE 1 TO 62 500. LATITUDE AND LONGITUDE LINES BEING REPRESENTED BY BORDER LINES AS SHOWN.

- DENOTES ONE INCH SPACES ON BORDER LINE OF ORIGINAL TRACING.