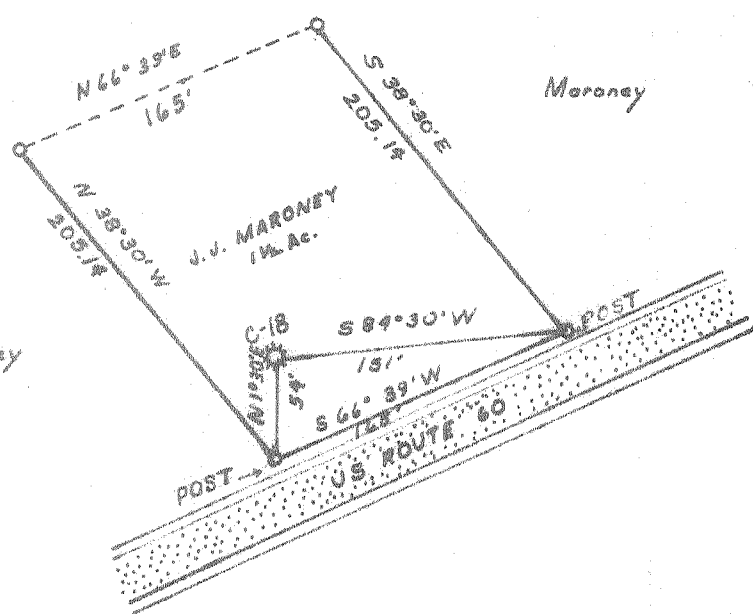


Latitude 38° 15'

Longitude 81° 25'



Kenawha Hocking Coal & Coke Company



Columbus Stevens & J. Maroney

- New Location
- Drill Deeper
- Redrill
- Abandonment

MINIMUM ERROR OF CLOSURE 1' IN 200
SOURCE OF ELEVATION: S.M. AT WATSON BRANCH 617

"I, the undersigned, hereby certify that this map is correct to the best of my knowledge and belief and shows all the information required by paragraph 6 of the rules and regulations of the oil and gas section of the mining laws of West Virginia."

Company	HAL PACK	
Address	HAMLIN, WEST VIRGINIA	
Farm	J. J. MARONEY	
Tract	Acres 1 1/2	Lease No. WS-6
Well (Farm) No.	640	Serial No. C-18
Elevation (Spirit Level)		
Quadrangle	MONTGOMERY NW	
County	KANAWHA	District CABIN CREEK
Engineer	G. F. Hall	
Engineer's Registration No.	2602	
File No.	Drawing No.	
Date	12-2-67	Scale 1" = 100'

STATE OF WEST VIRGINIA
DEPARTMENT OF MINES
OIL AND GAS DIVISION
CHARLESTON

WELL LOCATION MAP
FILE NO. KAN-1393-A

+ Denotes location of well on United States Topographic Maps, scale 1 to 62,500, latitude and longitude lines being represented by border lines as shown.

- Denotes one inch spaces on border line of original tracing.