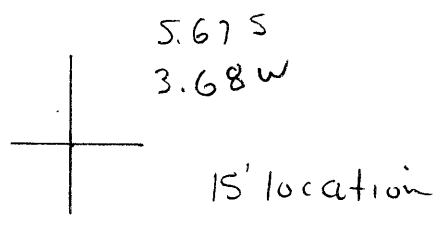


LATITUDE 38° 30'

LONGITUDE 81° 25'



7'5 OGIS topo location

7.5' loc _____ 15' loc _____
 _____ (calc.) _____

Company G. R. & S Co

Farm D. J. Jarrett 8

Quad Clendenin 15'

County Kanawha

District E1K

WELL LOCATION MAP

File No. 40104 70160

71 in 1914 WVGES
Kanawha County Report