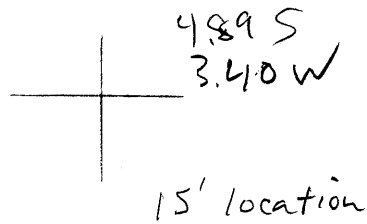


LATITUDE

38° 30'

LONGITUDE 81° 25'



7.5 OGIS topo location

7.5' loc _____ 15' loc _____
 _____ (calc.) _____

Company Ohio Fuel

Farm SS Moore 9

Quad Clendenin 15'

County Kanawha

District ERK

WELL LOCATION MAP

File No. 40147 70203
117

in 1914 WVGS
Kanawha County Report

	Thickness	Total
	Feet.	Feet.
Slate	100	560
Sand	80	640
Salt sand	635	1275
Slate	120	1395
Little Lime	30	1425
Slate and shells	27	1452
Big Lime	150	1602
Red rock	15	1617
Slate and shells	63	1680
Lime and sand	18	1698
Oil sand	6	
Shale	8	
Oil sand	5	
Slate to bottom	3	1720
	} Squaw sand	19 1717

"Oil well; hole full of water at 334'; gas at 1698'; show of oil at 1704'."

S. S. Moore No. 9 Well Record (117).

Located in Elk district, one-half mile southeast of Jarrett's Ford P. O. Completed October 8, 1912. Authority, Ohio Fuel Gas Company. Elevation, 805' B.

	Thickness	Total
	Feet.	Feet.
Conductor	16	16
Slate	84	100
Sand	80	180
Coal	5	185
Sand	135	320
Coal	5	325
Sand	145	470
Coal	5	475
Slate	5	480
Coal	10	490
Sand	335	825
Black slate	45	870
Lime	15	885
Slate and shells	30	915
Dark slate	10	925
Salt sand	485	1410
Slate	2	1412
Sand	8	1420
Red rock	15	1435
Lime	30	1465
Coal	2	1467
Sand and shells	28	1495
Sand	75	1570
Little Lime	25	1595
Slate	5	1600
Lime	8	1608
Slate	7	1615

	Thickness Feet.	Total Feet.
Lime	10	1625
Slate	2	1627
Big Lime	143	1770
Slate and shells	20	1790
Red rock	10	1800
Slate and shells	65	1865
Oil sand, Squaw	5	1870
Lime	11	1881
Second pay	7	1888

This driller evidently desired to establish a record for coal since he reports 2 feet of it even below the Mauch Chunk Red shale. The record is evidently unreliable so far as coal is concerned. (I. C. W.)

S. R. Hall No. 1 Well Record (393).

Located in Elk district on south side of Blue Creek 1.5 miles southeast of Blue Creek P. O. Completed Feb. 11, 1912. Authority, Ohio Fuel Oil Company. Elevation, 878'.

	Thickness Feet.	Total Feet.
Conductor	14	14
Sand	56	70
Slate and shells	115	185
Sand	8	193
Slate	55	248
Coal	6	254
Slate	21	275
Sand	50	325
Slate	62	387
Slate and sand	120	507
Sand	79	586
Slate	49	635
Sand	55	690
Slate	53	743
Sand	45	788
Slate and shells	84	872
Sandy lime	458	1330
Salt sand	17	1347
Slate	38	1385
Lime	38	1423
Slate and sand	11	1434
Red rock	4	1438
Lime	7	1445
Red rock	30	1475
Lime	13	1488
Slate	24	1512
Lime	10	1522
Slate	3	1525
Lime	8	1533
Pencil cave		