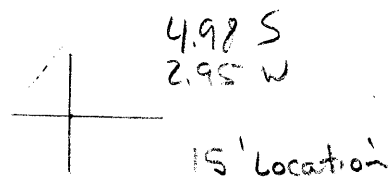


LATITUDE 38° 30'

LONGITUDE 81° 25'



7.5 OGIS topo location

7.5' loc \_\_\_\_\_ 15' loc \_\_\_\_\_  
 \_\_\_\_\_ (calc.) \_\_\_\_\_

Company Ohio Fuel

Farm M. E. Morris I

Quad Clendenin 15'

County Kanawha

District EIK

WELL LOCATION MAP

File No. 40192 70247

# 172 in Kanawha

1914 WVGES County Report