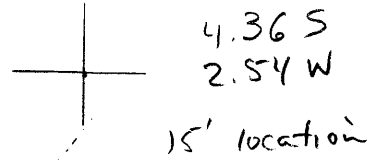


LATITUDE 38° 30'



LONGITUDE 81° 25'

7'5 OGIS topo location

7.5' loc \_\_\_\_\_ 15' loc \_\_\_\_\_  
 \_\_\_\_\_ (calc.) \_\_\_\_\_

Company William S. Edwards Oil Co

Farm Graham Heir's

Quad Clendenin 15'

County Kanawha

District E1K

WELL LOCATION MAP

File No. 40208 70263

1914 WVGES #193 in Kanawha County Report