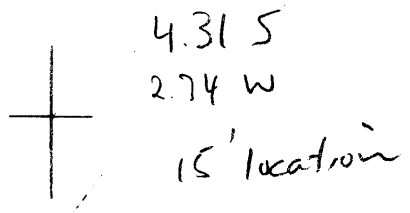


LATITUDE 38° 30'

LONGITUDE 81° 25'



T'5 OGIS topo location

7.5' loc _____ 15' loc _____
 _____ (calc.) _____

Company Ohio Fuel

Farm E. T. Carte 1

Quad Clendenin 15'

County Kanawha

District EIK

WELL LOCATION MAP

File No. 40210 7065

#195 in Kanawha
1914WV65 County Report

	Thickness Feet.	Total Feet.
Lime shells	35	435
Sand	100	535
Slate	15	550
Sand	50	600
Slate	20	620
Sand	30	650
Slate	35	685
Sand	20	705
Slate	58	763
Sand	73	836
Slate	2	838
Salt sand	366	1204
Cave	11	1215
Lime	25	1240
Red rock	25	1265
Lime	30	1295
Red rock	15	1310
Slate	15	1325
Sand, Maxton	25	1350
Little Lime	20	1370
Slate	35	1405
Lime shells	15	1420
Pencil cave	4	1424
Big Lime	160	1584
Sand, Keener	20	1604
Slate and lime shells	74	1678
Black sand	11	1689
Black slate	18	1707
Oil sand, Squaw	13	1720
Slate to bottom	1	1721

"Oil well; oil at 1707' to 1715'; bailer of water per hour in 'Keener' sand."

This well is located on the island where Geologist E. W. Evans in his report in 1865, stated was a good place to locate a well.

E. T. Cart No. 1 Well Record (195).

Located in Elk district on Buffalo Lick Branch of Elk River, one mile south of Alum Creek station. Completed June 7, 1912. Authority, Ohio Fuel Oil Company. Elevation, 621' L.

	Thickness Feet.	Total Feet.
Conductor	16	16
Lime	48	64
Slate	70	134
Sand	200	334
Slate and shells	60	394
Sand	66	460

	Thickness Feet.	Total Feet.
Slate	100	560
Sand	80	640
Salt sand	635	1275
Slate	120	1395
Little Lime	30	1425
Slate and shells	27	1452
Big Lime	150	1602
Red rock	15	1617
Slate and shells	63	1680
Lime and sand	18	1698
Oil sand	6	} Squaw sand 19 1717
Shale	8	
Oil sand	5	
Slate to bottom	3	1720

"Oil well; hole full of water at 334'; gas at 1698'; show of oil at 1704'."

S. S. Moore No. 9 Well Record (117).

Located in Elk district, one-half mile southeast of Jarrett's Ford
P. O. Completed October 8, 1912. Authority, Ohio Fuel Gas Com-
pany. Elevation, 805' B.

	Thickness Feet.	Total Feet.
Conductor	16	16
Slate	84	100
Sand	80	180
Coal	5	185
Sand	135	320
Coal	5	325
Sand	145	470
Coal	5	475
Slate	5	480
Coal	10 ?	490
Sand	335	825
Black slate	45	870
Lime	15	885
Slate and shells	30	915
Dark slate	10	925
Salt sand	485	1410
Slate	2	1412
Sand	8	1420
Red rock	15	1435
Lime	30	1465
Coal	2	1467
Sand and shells	28	1495
Sand	75	1570
Little Lime	25	1595
Slate	5	1600
Lime	8	1608
Slate	7	1615