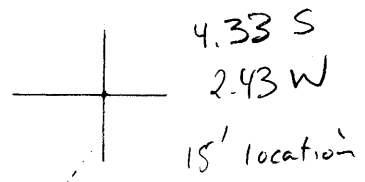


LATITUDE 38° 30'

LONGITUDE 81° 25'



7'5 OGIS topo location

7.5' loc \_\_\_\_\_ 15' loc \_\_\_\_\_  
 \_\_\_\_\_ (calc.) \_\_\_\_\_

Company William S. Edwards Oil Co

Farm Graham Heir's 1

Quad Clendenin 15'

County Kanawha

District E1K

WELL LOCATION MAP

File No. 40212 70267

#197 in Kanawha

1914 WV G&S County Report