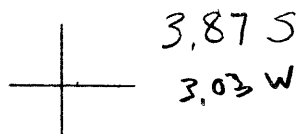


LATITUDE 38° 30'



LONGITUDE 81 20

7'5 OGIS topo location

7.5' loc _____ 15' loc _____
 _____ (calc.) _____

Company Falling Rock Cannel Coal Co

Farm Weir 2

Quad Clendepin 15'

County Kanawha

District E1K

WELL LOCATION MAP

File No. 410717 70745

~~718~~ in 1914 WNGES

Kanawha County Report