



39° 07' 30"

Latitude 39° 10'

80° 27' 30"

Longitude 80° 25'

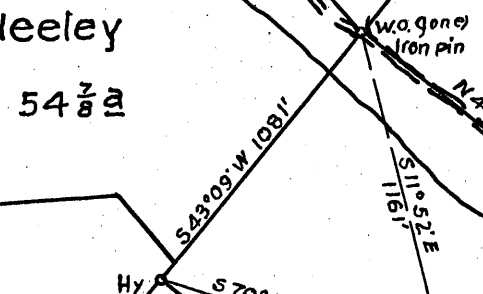
Virginia Allman  
40 1/2 a

Cyrus W. Smith  
107 1/2 a

7.5 loc  
0.79S  
0.29W  
+

+ 3.60S  
15' 2.55W

Geo. Neeley  
54 7/8 a



8321

William T. Garton  
52 a

Lucy Hitt  
50 a

Sarah E. Strother  
114 1/2 a

Mary Bailey  
16

New Location...   
Drill Deeper.....   
Abandonment.....  - REDRILL

Map Sh 57 S 24 E 8 FB 823 P-33

Company Hope Natural Gas Co.  
 Address Clarksburg, W.Va.  
 Farm William T. Garton  
 Tract \_\_\_\_\_ Acres 52 Lease No. 53190  
 Well (Farm) No. \_\_\_\_\_ Serial No. 8321  
 Elevation (Spirit Level) 1064'  
 Quadrangle Weston WC & 7.5  
 County Lewis District Freemans Crk  
 Engineer W.M. Powers  
 Engineer's Registration No. 900  
 File No. \_\_\_\_\_ Drawing No. \_\_\_\_\_  
 Date 9-25-46 Scale 1" = 40 P.

STATE OF WEST VIRGINIA  
DEPARTMENT OF MINES  
OIL AND GAS DIVISION  
CHARLESTON

WELL LOCATION MAP  
FILE NO. LEW-326-REDRILL  
Was: Lewis 30348 (348A)

+ Denotes location of well on United States Topographic Maps, scale 1 to 62,500, latitude and longitude lines being represented by border lines as shown.

- Denotes one inch spaces on border line of original tracing.



STATE OF WEST VIRGINIA  
DEPARTMENT OF MINES  
OIL AND GAS DIVISION

WELL RECORD

429

now 41-326

Permit No. 348-A Oil or Gas Well (KIND)

Company Hope Natural Gas Company.  
Address 445 West Main St. Clarksburg, W. Va.  
Farm W.F. Garton Acres 52  
Location (waters) \_\_\_\_\_  
Well No. 8321 Elev. 1064  
District Freemans Creek County Lewis  
The surface of tract is owned in fee by \_\_\_\_\_  
Address \_\_\_\_\_  
Mineral rights are owned by \_\_\_\_\_  
Address \_\_\_\_\_

Drilling commenced April 15, 1920  
Drilling completed May 24, 1920  
Date Shot \_\_\_\_\_ From \_\_\_\_\_ To \_\_\_\_\_  
With \_\_\_\_\_  
Open Flow \_\_\_\_\_ /10ths Water in \_\_\_\_\_ Inch  
\_\_\_\_\_ /10ths Merc. in \_\_\_\_\_ Inch  
Volume \_\_\_\_\_ Cu. Ft.  
Rock Pressure \_\_\_\_\_ lbs. \_\_\_\_\_ hrs.  
Oil \_\_\_\_\_ bbls., 1st 24 hrs.  
Fresh water 75 405 feet \_\_\_\_\_ feet  
Salt water \_\_\_\_\_ feet \_\_\_\_\_ feet

Casing and Tubing	Used in Drilling	Left in Well	Packers
Size			Kind of Packer
16			
13			
10	168	168	Size of
8 1/4	753	Pulled	
6 5/8	1261	1261	Depth set
5 3/16			
3			Perf. top
2	2090	2090	Perf. bottom
Liners Used			Perf. top
			Perf. bottom

CASING CEMENTED NOT SIZE \_\_\_\_\_ No. Ft. \_\_\_\_\_ Date \_\_\_\_\_  
COAL WAS ENCOUNTERED AT 90 FEET 24 INCHES  
130 FEET 36 INCHES FEET INCHES  
FEET INCHES FEET INCHES

Formation	Color	Hard or Soft	Top	Bottom	Oil, Gas or Water	Depth Found	Remarks
Coal			90	92	water	75	
Pittsburgh Coal			130	138			
Little Dunkard			138	150			
Big Dunkard			230	260			
Gas sand			390	425	water	<del>405</del> 405	show gas 405
First Salt			475	500			
Second Salt			590	650			
Third Salt			690	850			
Little Lime			1154	1166			
Pencil cave			1166	1174			
Big Lime			1174	1229			
Big Injun			1229	1358	show gas	1250	
Squaw			1360	1424			
Berea			1490	1515			
Gantz			1525	1550			
Fifty foot			1631	1670	gas	1633	
Gordon Stray			1800	1818			
Gordon			1830	1908			
Fifth			2050	2060	gas	2035	
Total depth				2090			

