

**Latitude**

**Longitude**

+  
1.94s  
.61w

**Topo Location**

**7.5' Loc.** \_\_\_\_\_ **15' Loc.** \_\_\_\_\_  
\_\_\_\_\_ **(calc.)** \_\_\_\_\_

**Company** \_\_\_\_\_

**Farm** \_\_\_\_\_

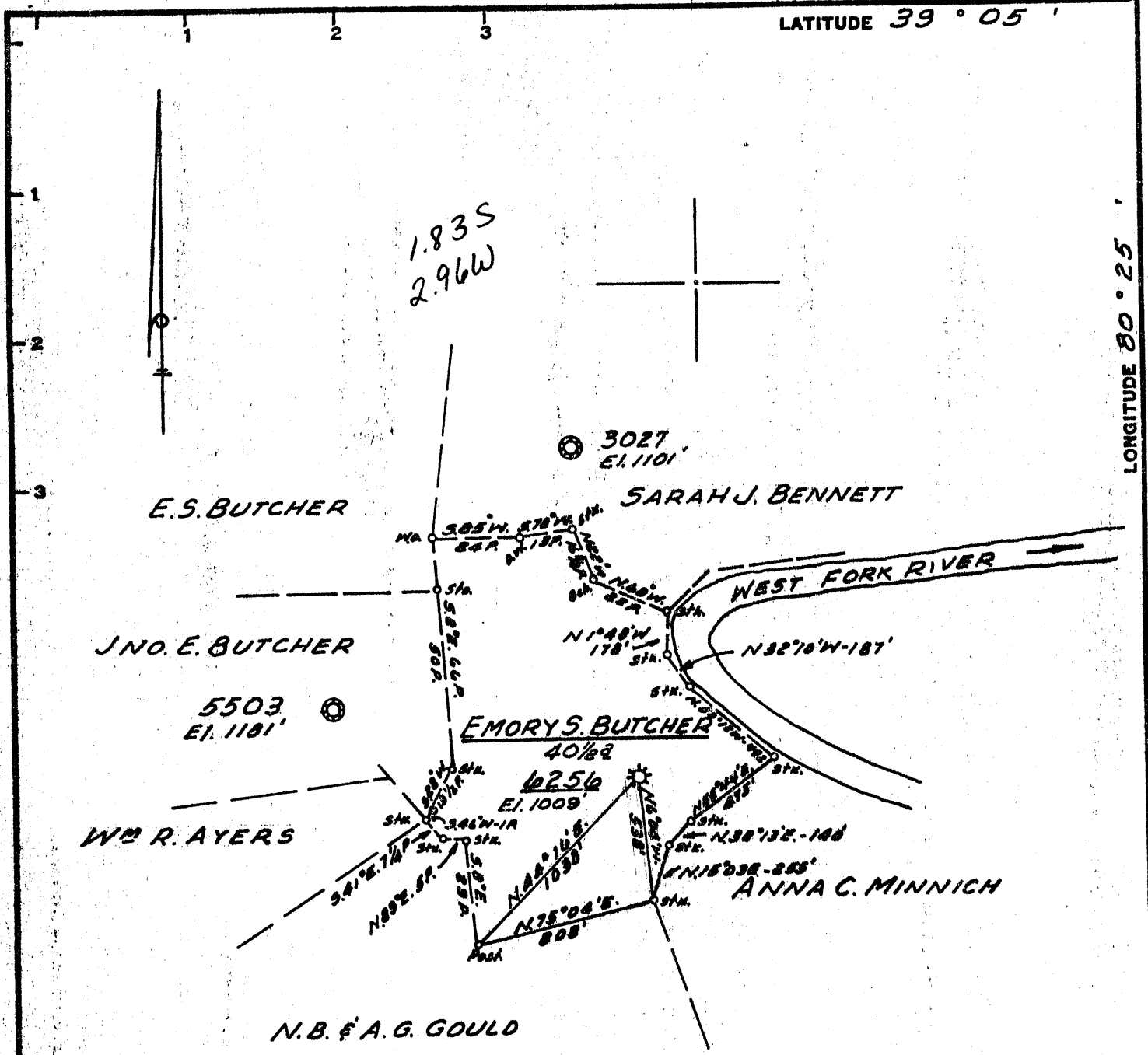
**15' Quad** \_\_\_\_\_  
**(sec.)**

**7.5' Quad** Weston

**District** Freemans Creek

**WELL LOCATION PLAT**

**County** 041 **Permit** 1804



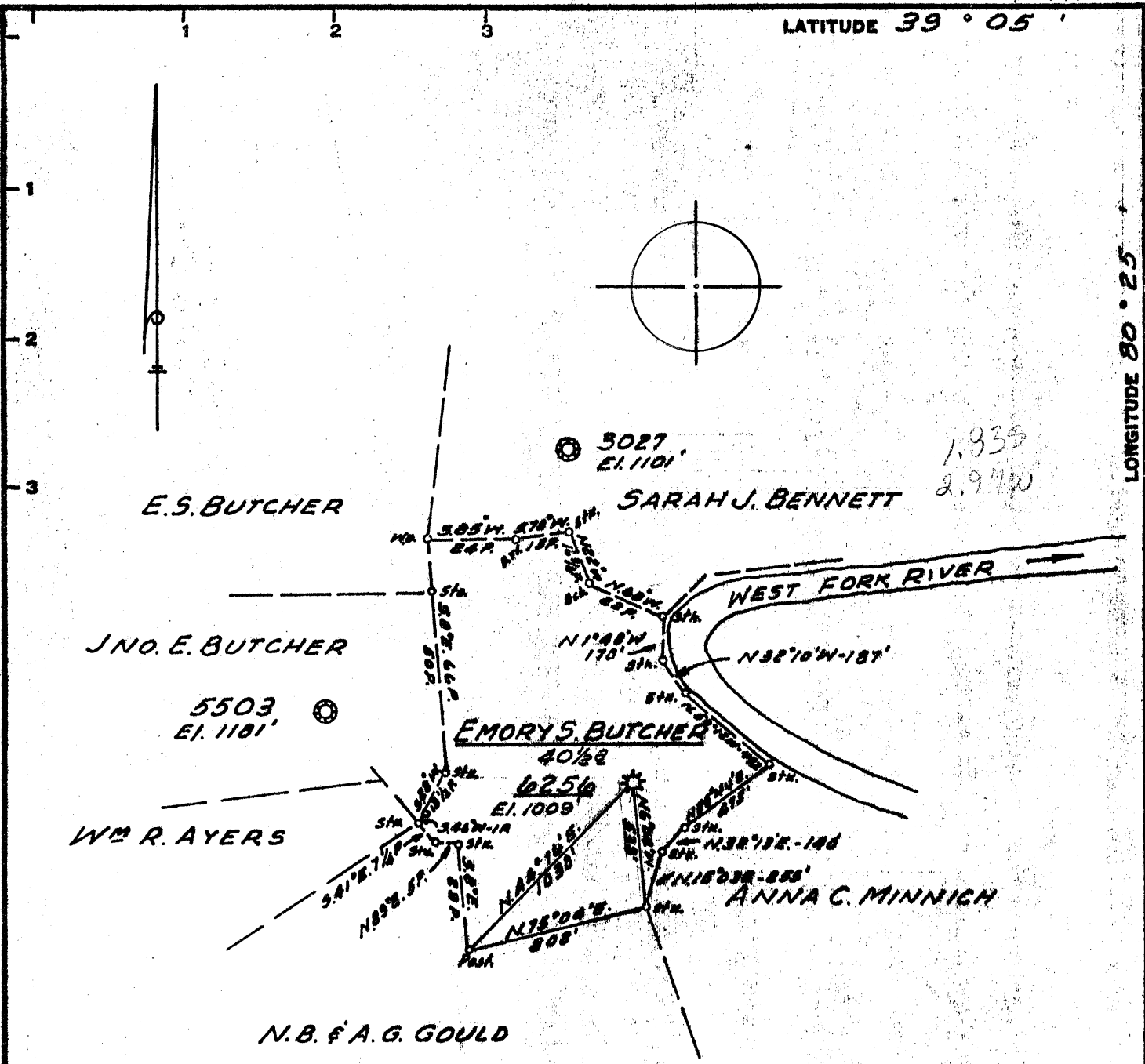
Minimum Error of Closure 1' IN 200'  
 Source of Elevation CONSOLIDATED GAS SUPPLY CORP. WELL 2288 EL. 1072'  
 "I, the undersigned, hereby certify that this map is correct to the best of my knowledge and belief and shows all the information required by paragraph 6 of the rules and regulations of the oil and gas section of the mining laws of West Virginia."

- FRACURE
- New Location
- Drill Deeper
- Abandonment
- Partial Plugging

issued 9-3-71  
 MAP SHT. 70; 528-E7, F.B. 546-Pg. 26-27

Company CONSOLIDATED GAS SUPPLY CORP.  
 Address CLARKSBURG, WEST VA.  
 Farm EMORY S. BUTCHER  
 Tract \_\_\_\_\_ Acres 40 1/2 Lease No. 21715  
 Well (Farm) No. \_\_\_\_\_ Serial No. 6256  
 Elevation (Spirit Level) 1009'  
 Quadrangle WESTON SW  
 County LEWIS District FREEMAN'S CREEK  
 Engineer Joel M. Jarvis  
 Engineer's Registration No. 2397  
 File No. \_\_\_\_\_ Drawing No. \_\_\_\_\_  
 Date FEB. 16, 1970 Scale 1"=40 POLES

STATE OF WEST VIRGINIA  
 DEPARTMENT OF MINES  
 OIL AND GAS DIVISION  
 FILE NO. LEW-12-FRAC.  
 Canceled - 3-11-70  
 Reissued on LEW-1804-DD-OP  
 + Denotes location of well on United States Topographic Maps, scale 1 to 62,500, latitude and longitude lines being represented by border lines as shown.  
 - Denotes one inch spaces on border line of original tracing.



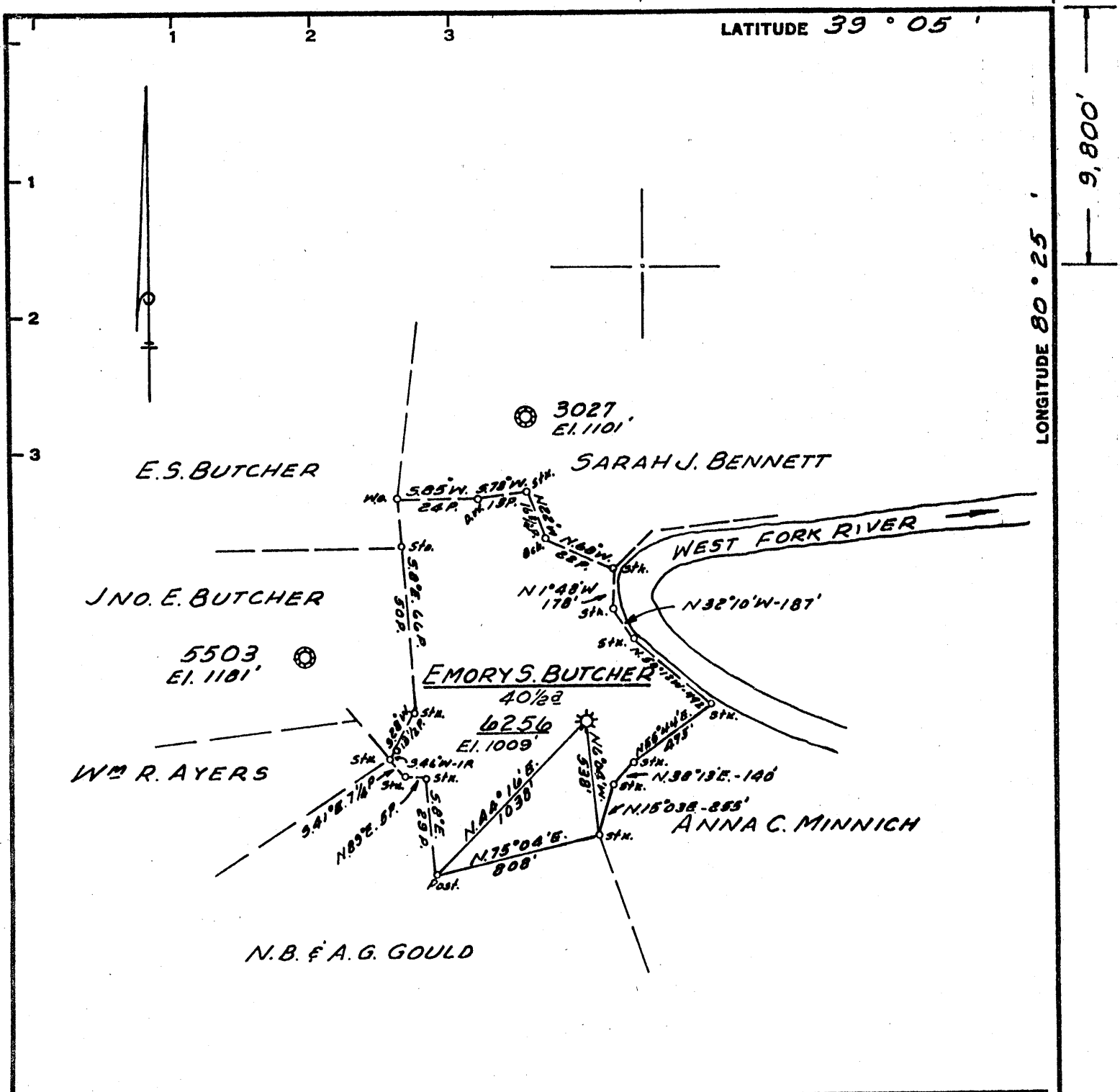
Minimum Error of Closure 1' IN 200'  
 Source of Elevation CONSOLIDATED GAS SUPPLY CORP. WELL 2288 EL. 1072'  
 "I, the undersigned, hereby certify that this map is correct to the best of my knowledge and belief and shows all the information required by paragraph 6 of the rules and regulations of the oil and gas section of the mining laws of West Virginia."

Fracture...   
 New Location...   
 Drill Deeper...   
 Abandonment...

MAP SHT. 70; 528-E7, F.B. 546-PG. 26-27

Company CONSOLIDATED GAS SUPPLY CORP.  
 Address CLARKSBURG, WEST VA.  
 Farm EMORY S. BUTCHER  
 Tract \_\_\_\_\_ Acres 40 1/2 Lease No. 21715  
 Well (Farm) No. \_\_\_\_\_ Serial No. 6256  
 Elevation (Spirit Level) 1009'  
 Quadrangle WESTON SW  
 County LEWIS District FREEMAN'S CREEK  
 Engineer Jackson M. Jarvis  
 Engineer's Registration No. 2397  
 File No. \_\_\_\_\_ Drawing No. \_\_\_\_\_  
 Date FEB. 16, 1970 Scale 1" = 40 POLES

STATE OF WEST VIRGINIA  
 DEPARTMENT OF MINES  
 OIL AND GAS DIVISION  
 CHARLESTON  
 Canceled - 3-11-70  
**WELL LOCATION MAP**  
 FILE NO. LEW-12-FRAC.  
 Revised as LEW-1804-DD  
 + Denotes location of well on United States Topographic Maps, scale 1 to 62,500, latitude and longitude lines being represented by border lines as shown.  
 - Denotes one inch spaces on border line of original tracing.



Minimum Error of Closure 1' IN 200'  
 Source of Elevation CONSOLIDATED GAS SUPPLY CORP. WELL 2288 EL. 1072'  
 "I, the undersigned, hereby certify that this map is correct to the best of my knowledge and belief and shows all the information required by paragraph 6 of the rules and regulations of the oil and gas section of the mining laws of West Virginia."

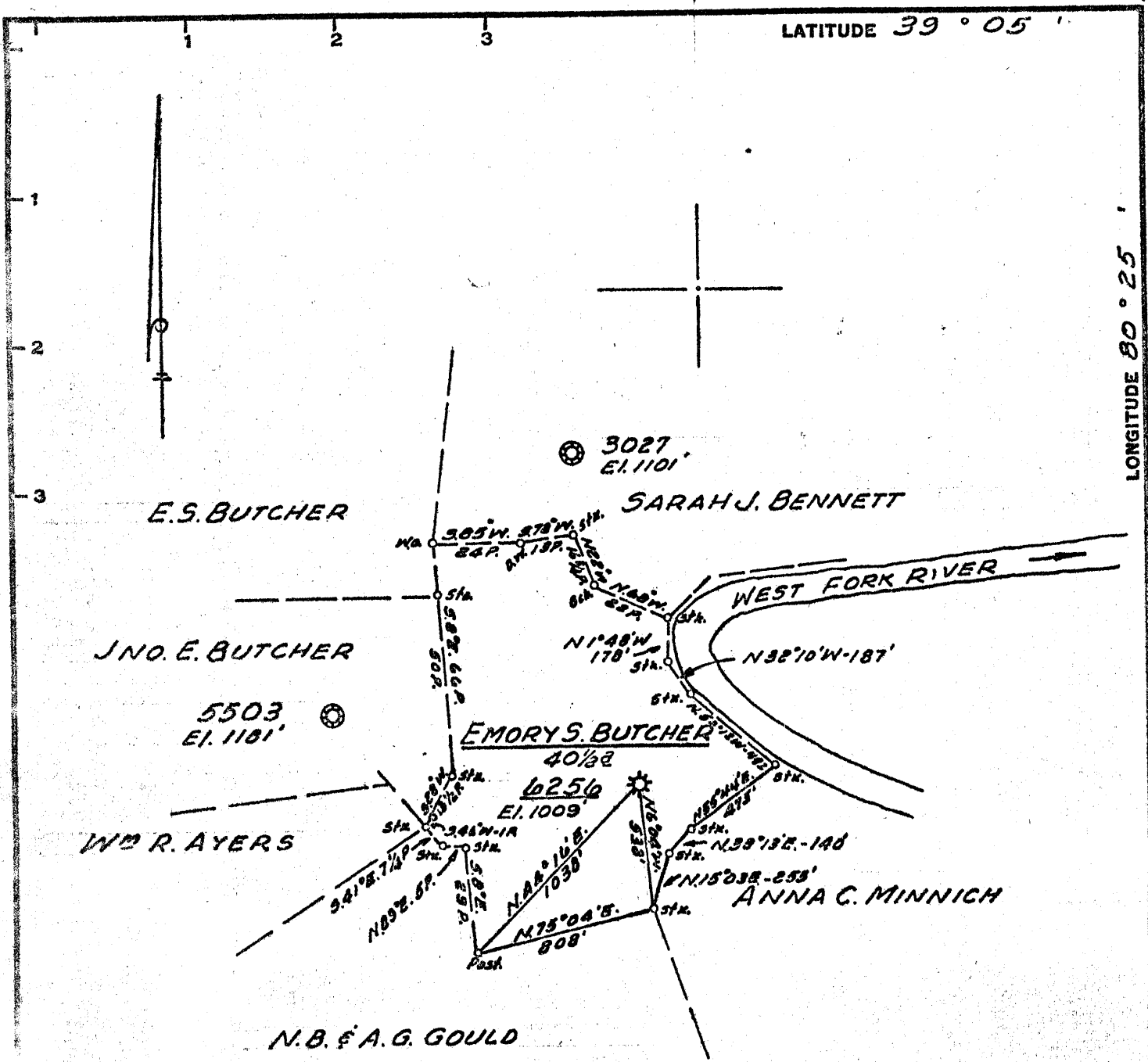
- FRACTURE...
- New Location...
- Drill Deeper...
- Abandonment...

MAP SHT. 70; 528-E7, F.B. 546-Pg. 26-27

Company CONSOLIDATED GAS SUPPLY CORP.  
 Address CLARKSBURG, WEST VA.  
 Farm EMORY S. BUTCHER  
 Tract \_\_\_\_\_ Acres 40 1/2 Lease No. 21715  
 Well (Farm) No. \_\_\_\_\_ Serial No. 6256  
 Elevation (Spirit Level) 1009'  
 Quadrangle WESTON **(SW)**  
 County LEWIS District FREEMAN'S CREEK  
 Engineer Jackson M. Jones  
 Engineer's Registration No. 2397  
 File No. \_\_\_\_\_ Drawing No. \_\_\_\_\_  
 Date FEB. 16, 1970 Scale 1" = 40 FEET

STATE OF WEST VIRGINIA  
 DEPARTMENT OF MINES  
 OIL AND GAS DIVISION  
 Fmcc. CHARLESTON  
 Cancelled - 3-11-70  
**WELL LOCATION MAP**  
 FILE NO. LEW-12-FRAC.

+ Denotes location of well on United States Topographic Maps, scale 1 to 62,500, latitude and longitude lines being represented by border lines as shown.  
 - Denotes one inch spaces on border line of original tracing.



Minimum Error of Closure 1' IN 200'  
 Source of Elevation CONSOLIDATED GAS SUPPLY CORP. WELL 2288 EL. 1072'  
 "I, the undersigned, hereby certify that this map is correct to the best of my knowledge and belief and shows all the information required by paragraph 6 of the rules and regulations of the oil and gas section of the mining laws of West Virginia."

- FRACTURE...
- New Location...
- Drill Deeper...
- Abandonment...

MAP SHT. 70; 528-E7, F.B. 546-Pg. 26-27

Company CONSOLIDATED GAS SUPPLY CORP.  
 Address CLARKSBURG, WEST VA.  
 Farm EMORY S. BUTCHER  
 Tract \_\_\_\_\_ Acres 40 1/2 Lease No. 21715  
 Well (Farm) No. \_\_\_\_\_ Serial No. 6256  
 Elevation (Spirit Level) 1009'  
 Quadrangle WESTON SW  
 County LEWIS District FREEMAN'S CREEK  
 Engineer Jackson M. Jewett  
 Engineer's Registration No. 2397  
 File No. \_\_\_\_\_ Drawing No. \_\_\_\_\_  
 Date FEB. 16, 1970 Scale 1" = 40 FEET

STATE OF WEST VIRGINIA  
 DEPARTMENT OF MINES  
 OIL AND GAS DIVISION  
 CHARLESTON

**WELL LOCATION MAP**  
 FILE NO. LEW-12-FRAC,

+ Denotes location of well on United States Topographic Maps, scale 1 to 62,500, latitude and longitude lines being represented by border lines as shown.  
 - Denotes one inch spaces on border line of original tracing.



RECEIVED

SEP 7 1971

STATE OF WEST VIRGINIA  
DEPARTMENT OF MINES  
OIL AND GAS WELLS DIVISION

OIL & GAS DIVISION  
Rotary   
Spudder   
Cable Tools  XXXXX  
Storage

Drangle WESTON

Well No. LEW-1804-DD

WELL RECORD

Oil or Gas Well GAS  
(KIND)

Company	Casing and Tubing	Used in Drilling	Left in Well	Packers
Consolidated Gas Supply Corporation Clarksburg, W. Va.	Size			Kind of Packer
Emory S. Butcher Acres 62	16			
Elev. 1009'	13			
Freemans Creek County Lewis	10	195	195	Size of
	8 1/4	756	756	
	6 3/8	1413	1413	Depth set
	5 3/16			
	4 1/2			
	3	1558	None	Perf. top <u>2237</u>
	2			Perf. bottom <u>2247</u>
	Liners Used			Perf. top
				Perf. bottom

surface of tract is owned in fee by  
Address  
General rights are owned by  
Address  
Drilling commenced 12-06-42  
Drilling completed 2-22-43  
Shot 3-03-23 From Stray To  
Flow Exhausted -- Will Frac  
Pressure Not taken  
ACIDIZED (DETAILS) NO  
FRACTURED (DETAILS) NO

Attach copy of cementing record.  
CASING CEMENTED SIZE No. Ft. Date  
Amount of cement used (bags)  
Name of Service Co.  
COAL WAS ENCOUNTERED AT None FEET INCHES  
FEET INCHES FEET INCHES  
FEET INCHES FEET INCHES

RESULT AFTER TREATMENT (Initial open Flow or bbls.) 327 MCF  
CHECK PRESSURE AFTER TREATMENT 170 60 HOURS  
Fresh Water 320' Feet Salt Water None Feet  
Producing Sand Stray Depth 1943-1992'

Formation	Color	Hard or Soft	Top	Bottom	Oil, Gas or Water	Depth	Remarks
Little Dunkard			228	243			
Big Dunkard			290	330	Water	320'	Fresh
Alt Sand			501	655			
axton			802	990			
njun Sand			1395	1500	Gas	1485'	
antz Sand			1750	1780			
ifty Foot			1855	1876			
hirty Foot			1882	1934			
tray			1943	1992	Gas	1960'	
ifth Sand			2170	2178			
Started drilling deeper at				2220			
ayard Sand			2220	2258	Gas	(Bayard)	2231-41
late & shells			2258	2740			
peechley			2740	2771			
late & shells			2771	3071			
alltown			3071	3118			
and & shale			3118	4154			
enson			4154	4175			
TOTAL DEPTH				4250'			
Will abandon hole back to 2500'							
			4250				
			2220				
			2030				
				DD Soilage			