

4104092 W

WW-7  
8-30-06



West Virginia Department of Environmental Protection  
Office of Oil and Gas

**WELL LOCATION FORM: GPS**

API: 47-041-04092 WELL NO.: 608217

FARM NAME: United States of America

RESPONSIBLE PARTY NAME: Equitrans, L.P.

COUNTY: Lewis DISTRICT: Court House Rural

QUADRANGLE: Roanoke/Crawford NW

SURFACE OWNER: US Army Corps of Engineers

ROYALTY OWNER: U.S. Bureau of Land Management, Division of Natural Resources

UTM GPS NORTHING: 4315961.3194517

UTM GPS EASTING: 544929.30546476 GPS ELEVATION: 365.4552 (1199 ft)

The Responsible Party named above has chosen to submit GPS coordinates in lieu of preparing a new well location plat for a plugging permit or assigned API number on the above well. The Office of Oil and Gas will not accept GPS coordinates that do not meet the following requirements:

- Datum: NAD 1983, Zone: 17 North, Coordinate Units: meters, Altitude: height above mean sea level (MSL) – meters.
- Accuracy to Datum – 3.05 meters
- Data Collection Method:  
Survey grade GPS  : Post Processed Differential

Real-Time Differential

Mapping Grade GPS  : Post Processed Differential

Real-Time Differential

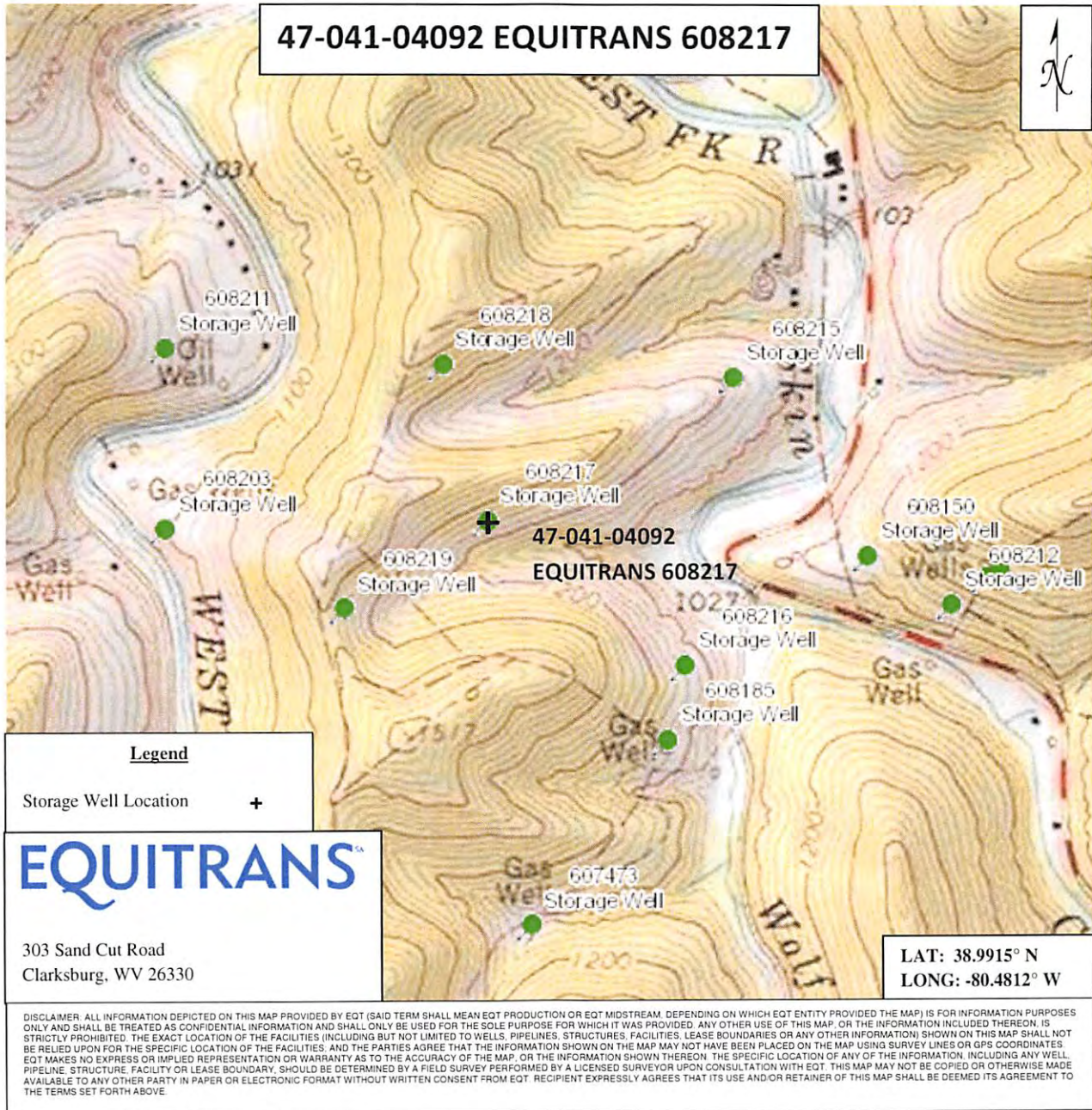
- Letter size copy of the topography map showing the well location.**

I the undersigned, hereby certify this data is correct to the best of my knowledge and belief and shows all the information required by law and the regulations issued and prescribed by the Office of Oil and Gas.

[Signature]                      Landman III                      7-21-17  
 Signature                                      Title                                      Date

RECEIVED  
 Office of Oil and Gas  
 AUG 10 2017  
 WV Department of  
 Environmental Protection

09/01/2017



RECEIVED  
Office of Oil and Gas  
AUG 10 2017  
WV Department of  
Environmental Protection

Quad: Roanoke/Crawford NW Scale: Not Mapped to Scale  
 County: Lewis Date: 7/21/2017  
 District: Court House Rural API: 47-041-04092