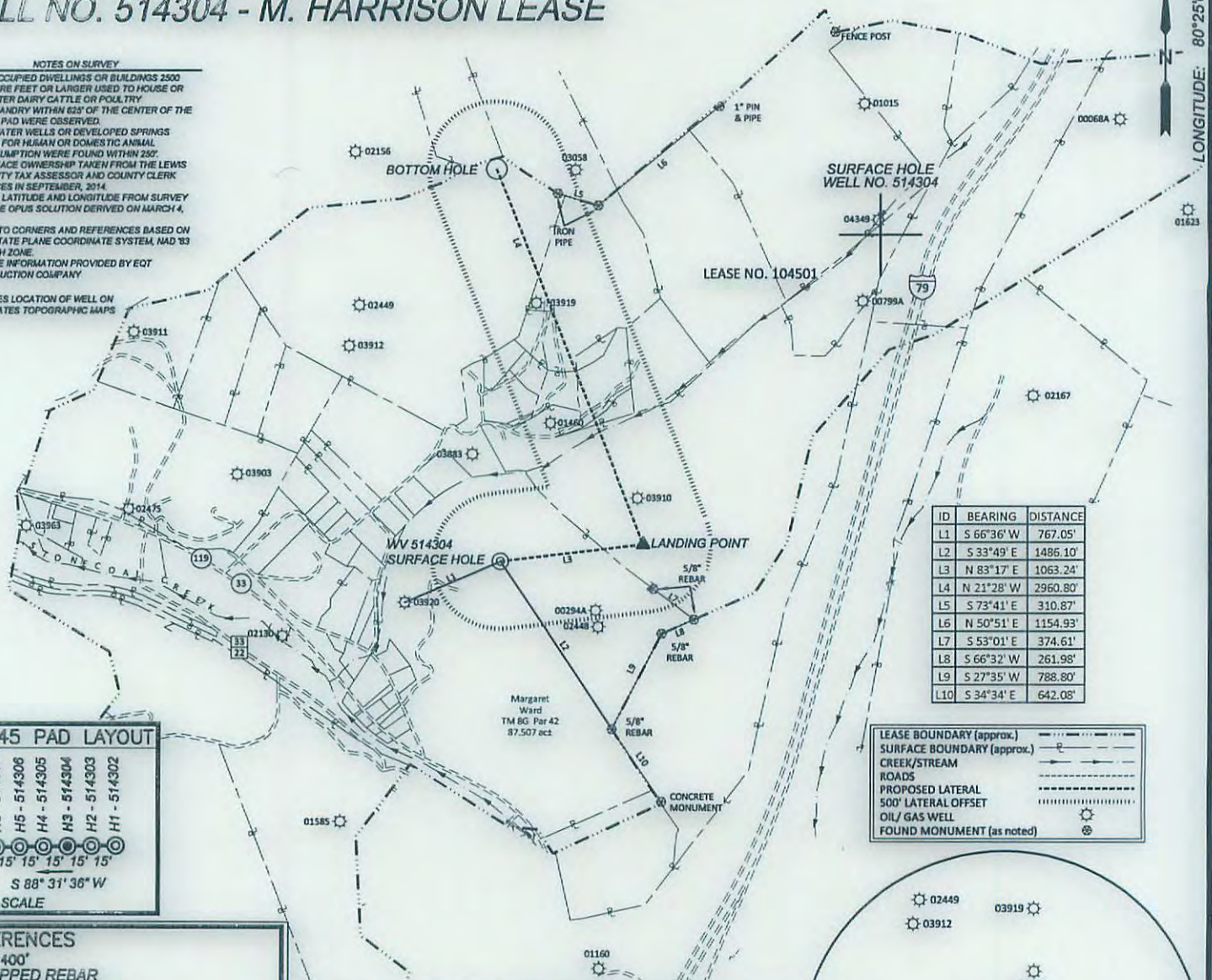


# EQT PRODUCTION COMPANY WELL NO. 514304 - M. HARRISON LEASE

### NOTES ON SURVEY

- NO OCCUPIED DWELLINGS OR BUILDINGS 2500 SQUARE FEET OR LARGER USED TO HOUSE OR SHELTER DAIRY CATTLE OR POULTRY HUSBANDRY WITHIN 625' OF THE CENTER OF THE WELL PAD WERE OBSERVED.
- NO WATER WELLS OR DEVELOPED SPRINGS USED FOR IRRIGATION OR DOMESTIC ANIMAL CONSUMPTION WERE FOUND WITHIN 200'.
- SURFACE OWNERSHIP TAKEN FROM THE LEWIS COUNTY TAX ASSESSOR AND COUNTY CLERK OFFICES IN SEPTEMBER, 2014.
- WELL LATITUDE AND LONGITUDE FROM SURVEY GRADE OPUS SOLUTION DERIVED ON MARCH 4, 2014.
- TIES TO CORNERS AND REFERENCES BASED ON WV STATE PLANE COORDINATE SYSTEM, NAD '83 SOUTH ZONE.
- LEASE INFORMATION PROVIDED BY EQT PRODUCTION COMPANY

(+) DENOTES LOCATION OF WELL ON UNITED STATES TOPOGRAPHIC MAPS



ID	BEARING	DISTANCE
L1	S 66°36' W	767.05'
L2	S 33°49' E	1486.10'
L3	N 83°17' E	1063.24'
L4	N 21°28' W	2960.80'
L5	S 73°41' E	310.87'
L6	N 50°51' E	1154.93'
L7	S 53°01' E	374.61'
L8	S 66°32' W	261.98'
L9	S 27°35' W	788.80'
L10	S 34°34' E	642.08'

LEASE BOUNDARY (approx.)

SURFACE BOUNDARY (approx.)

CREEK/STREAM

ROADS

PROPOSED LATERAL

500' LATERAL OFFSET

OIL / GAS WELL

FOUND MONUMENT (as noted)

### WES 45 PAD LAYOUT

NOT TO SCALE

### REFERENCES

1" = 400'  
5/8" CAPPED REBAR

WV 514304

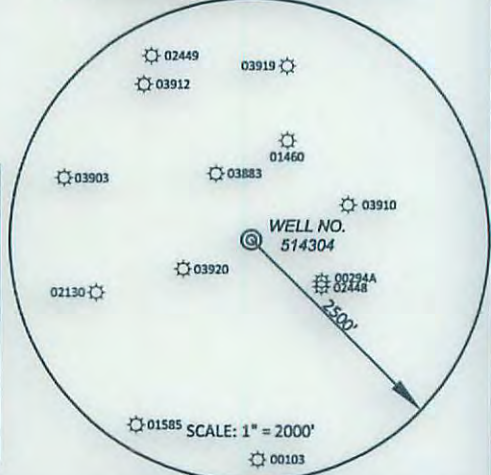
5/8" CAPPED REBAR

### EQT PRODUCTION COMPANY WELL NO. WV 514304 M. HARRISON LEASE 750 ACRES ±

**SURFACE HOLE**  
NAD '27 SOUTH S.P.C.: N. 740303.00 E. 2161609.91  
NAD '27 SOUTH GEO. COORDINATES: LAT. 39.031842 LON. -80.431141  
NAD '83 UTM 17N: N. 4320474.64 E. 549252.81

**LANDING POINT**  
NAD '27 SOUTH S.P.C.: N. 740510.70 E. 2162665.84  
NAD '27 SOUTH GEO. COORDINATES: LAT. 39.032165 LON. -80.427421  
NAD '83 UTM 17N: N. 4320512.57 E. 549574.52

**BOTTOM HOLE**  
NAD '27 SOUTH S.P.C.: N. 743266.10 E. 2161582.25  
NAD '27 SOUTH GEO. COORDINATES: LAT. 39.039748 LON. -80.431176  
NAD '83 UTM 17N: N. 4321352.03 E. 549244.27



600 Marketplace Avenue, Suite 200  
Bridgeport, WV 26330  
Toll Free 855-488-9539  
Fax 304-933-3327



Civil & Environmental Consultants, Inc.



I, the undersigned, hereby certify that this plat is correct to the best of my knowledge and belief and shows all the information required by law and the rules issued and prescribed by the Division of Environmental Protection.

DATE AUGUST 20, 2015

SCALE 1" = 1200' ACCURACY 1:200

OPERATORS WELL No. 514304

47 - 041 - 05699 HGA  
API No.

TYPE OF WELL:

GAS:  
Production  Storage  \*Deep  \*Shallow

PROPOSED WORK ON LOCATION:

Drill  Drill Deeper  Redrill  Convert   
 Fracture/ Stimulate  \*Plug off to Formation   
 Perforate New Formation  Plug and Abandon   
 Clean/ Replug  Other Than Above   
 If "Other" Please see Details below—  
 DETAILS OF PROPOSED WORK \_\_\_\_\_

\*TARGET FORMATION MARCELLUS

ESTIMATED DEPTH TVD: 7,229' TMD: 10,985'

STATE OF WEST VIRGINIA  
DIVISION OF ENVIRONMENTAL PROTECTION  
OFFICE OF OIL AND GAS

WELL AREA & LOCATION INFORMATION:

ELEVATION SOURCE DGPS (OPUS)

ELEVATION 1208.2' (GROUND), 1206.5' (PROPOSED)

WATERSHED STONECOAL CREEK DISTRICT HACKER'S

COUNTY LEWIS TOPO QUAD WESTON

SURFACE OWNER MARGARET H. WARD

ACREAGE 87.507 ±

ROYALTY OWNER M. HARRISON, LEASE NO. 104501

LEASE ACREAGE 750 ±

WELL OPERATOR EQT PRODUCTION COMPANY

ADDRESS 115 PROFESSIONAL PLACE P.O. BOX 280  
BRIDGEPORT, WV 26330

DESIGNATED AGENT REX C. RAY

ADDRESS 115 PROFESSIONAL PLACE P.O. BOX 280  
BRIDGEPORT, WV 26330

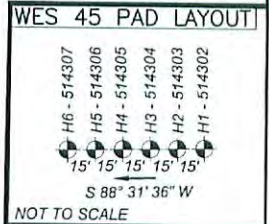
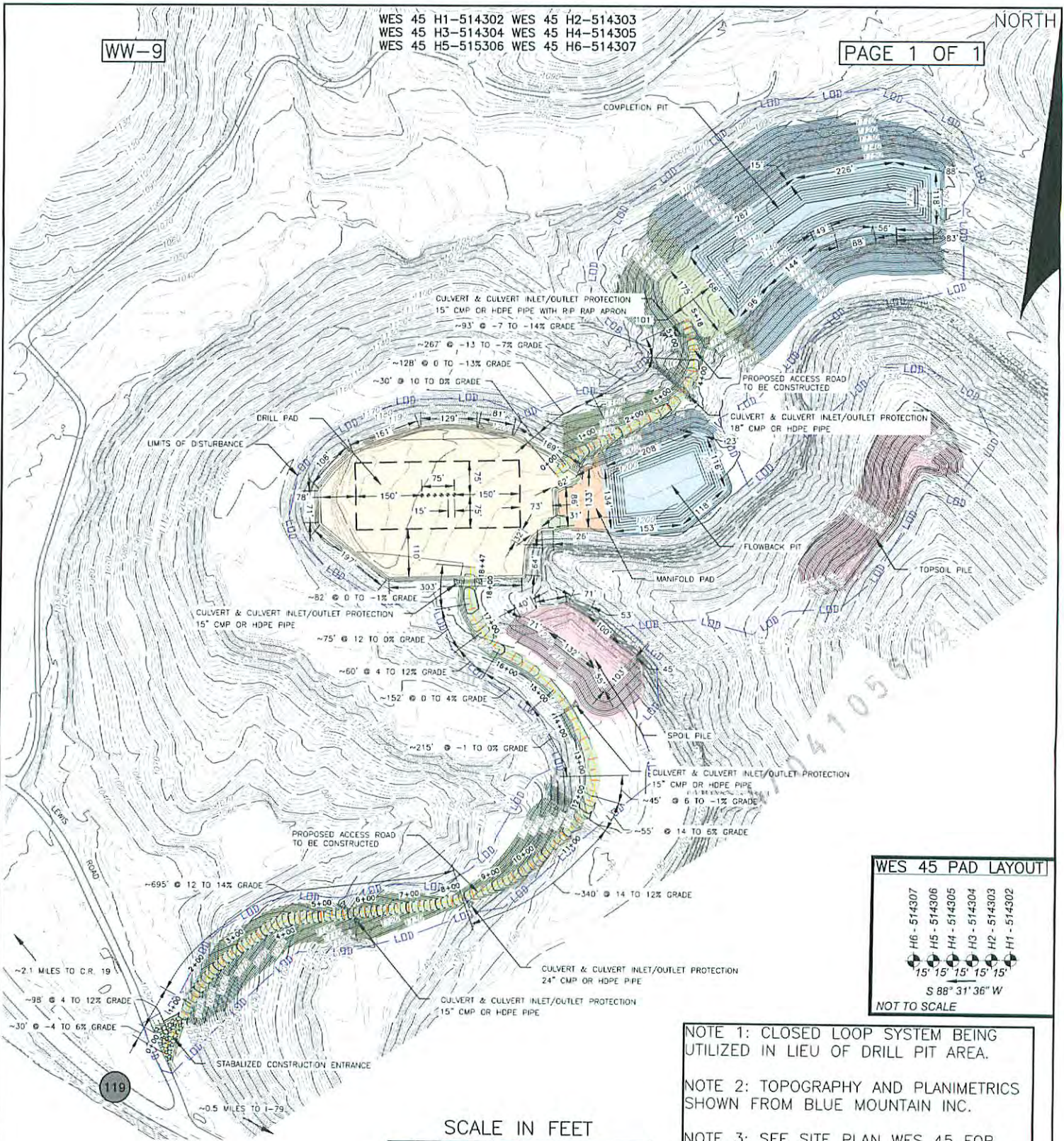


WW-9

WES 45 H1-514302 WES 45 H2-514303  
WES 45 H3-514304 WES 45 H4-514305  
WES 45 H5-515306 WES 45 H6-514307

PAGE 1 OF 1

NORTH



NOTE 1: CLOSED LOOP SYSTEM BEING UTILIZED IN LIEU OF DRILL PIT AREA.

NOTE 2: TOPOGRAPHY AND PLANIMETRICS SHOWN FROM BLUE MOUNTAIN INC.

NOTE 3: SEE SITE PLAN WES 45 FOR COMPLETE CONSTRUCTION & EROSION & SEDIMENT CONTROL DETAILS.

**C&E**  
**Civil & Environmental Consultants, Inc.**  
 99 Cambridge Place - Bridgeport, WV 26330  
 Ph: 304.933.3119 · Fax: 304.933.3327  
 www.cecinc.com

EQT PRODUCTION COMPANY  
 WES 45 WELL PAD  
 HACKERS CREEK DISTRICT,  
 LEWIS COUNTY, WEST VIRGINIA

PERMIT APPLICATION  
 REC PLAN

DRAWN BY: DAM	CHECKED BY: RMC	APPROVED BY: DEM	FIGURE NO.: 13
DATE: DEC. 9, 2014	DWG SCALE: 1" = 300'	PROJECT NO: 140-593	DATE: 01/15/2016

01/15/2016