



west virginia department of environmental protection

Office of Oil and Gas
601 57th Street, S.E.
Charleston, WV 25304
(304) 926-0450
fax: (304) 926-0452

Harold D. Ward, Cabinet Secretary
www.dep.wv.gov

Wednesday, May 12, 2021
PERMIT MODIFICATION APPROVAL
Horizontal 6A / New Drill

HG ENERGY II APPALACHIA, LLC
5260 DUPONT ROAD

PARKERSBURG, WV 26101

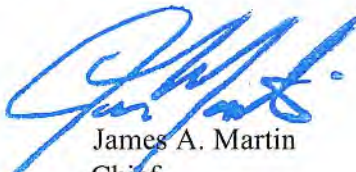
Re: Permit Modification Approval for FLESHER 1212 N-9H
47-041-05713-00-00

Extended Lateral Length

HG ENERGY II APPALACHIA, LLC

The Office of Oil and Gas has reviewed the attached permit modification for the above referenced permit. The attached modification has been approved and well work may begin. Please be reminded that the oil and gas inspector is to be notified twenty-four (24) hours before permitted well work is commenced.

If there are any questions, please feel free to contact me at (304) 926- 0450.



James A. Martin
Chief

Operator's Well Number: FLESHER 1212 N-9H
Farm Name: H. G. ENERGY II APPALACHIA, LLC
U.S. WELL NUMBER: 47-041-05713-00-00
Horizontal 6A New Drill
Date Modification Issued: 5/12/2021

Promoting a healthy environment.

05/14/2021

STATE OF WEST VIRGINIA
DEPARTMENT OF ENVIRONMENTAL PROTECTION, OFFICE OF OIL AND GAS
WELL WORK PERMIT APPLICATION

1) Well Operator: HG Energy II Appalachia, L.P. 494519932 Lewis Freeman Weston 7.5'
Operator ID County District Quadrangle

2) Operator's Well Number: Flesher 1212 N-9H Well Pad Name: Flesher 1212

3) Farm Name/Surface Owner: Flesher Public Road Access: SR19 to Kincheloe Run Rd to Valley Chapel Rd

4) Elevation, current ground: 1338' Elevation, proposed post-construction: 1332'

5) Well Type (a) Gas Oil _____ Underground Storage _____
Other _____

(b) If Gas Shallow Deep _____
Horizontal

6) Existing Pad: Yes or No No

7) Proposed Target Formation(s), Depth(s), Anticipated Thickness and Expected Pressure(s):
Marcellus at 6845/6927' and 82' in thickness. Anticipated pressure at 4314#.

8) Proposed Total Vertical Depth: 6925' *SDW*

9) Formation at Total Vertical Depth: Marcellus *4/8/2021*

10) Proposed Total Measured Depth: 28043'

11) Proposed Horizontal Leg Length: 19622'

12) Approximate Fresh Water Strata Depths: 105', 273', 302'

13) Method to Determine Fresh Water Depths: Nearest offset well data, (47-041-5338, 0218)

14) Approximate Saltwater Depths: 1028' (Nearest offset well data, 47-041-1673)

15) Approximate Coal Seam Depths: 420', 525' 830' (Surface casing is being extended to cover the coal in the DTI Storage Field)

16) Approximate Depth to Possible Void (coal mine, karst, other): None

17) Does Proposed well location contain coal seams directly overlying or adjacent to an active mine? Yes _____ No

(a) If Yes, provide Mine Info: Name: _____
Depth: _____
Seam: _____
Owner: _____

RECEIVED
Office of Oil and Gas

APR 12

WW-6B
(04/15)

4704105713
API NO. 47-_____
OPERATOR WELL NO. Flesher 1212 N-9H
Well Pad Name: Flesher 1212

18)

CASING AND TUBING PROGRAM

TYPE	Size (in)	New or Used	Grade	Weight per ft. (lb/ft)	FOOTAGE: For Drilling (ft)	INTERVALS: Left in Well (ft)	CEMENT: Fill-up (Cu. Ft.)/CTS
Conductor	30"	New	LS	157.5	120'	120'	Drilled In
Fresh Water/Coal	20"	NEW	J-55	94	1000'	1000'	CTS
Intermediate 1	13 3/8"	NEW	J-55 BTC	68	2100'	2100'	CTS
Intermediate 2	9 5/8"	NEW	J-55 BTC	40	2900'	2900'	CTS
Production	5 1/2"	NEW	P-110 HP	23	28043'	28043'	CTS
Tubing							
Liners							

SDW 4/8/2021

TYPE	Size (in)	Wellbore Diameter (in)	Wall Thickness (in)	Burst Pressure (psi)	Anticipated Max. Internal Pressure (psi)	Cement Type	Cement Yield (cu. ft./k)
Conductor	30"	30"	.500				Drilled In
Fresh Water/Coal	20"	26"	.438	2110	1200	Type 1, Class A	40 % excess yield = 1.20, CTS
Intermediate 1	13 3/8"	17 1/2"	.480	3450		Type 1/Class A	Lead 40% excess, Tail 0% excess
Intermediate 2	9 5/8"	12 1/4"	.395	3950		Type 1/Class A	Lead 40% excess, Tail 0% Excess Lead
Production	5 1/2"	8 1/2"	.415	16240	12500	Type 1/Class A	20% excess yield = 1.10, tail yield 1.00
Tubing							
Liners							

PACKERS

Kind:				
Sizes:				
Depths Set:				

RECEIVED
Office of Oil and Gas

APR 12

WV Department of
Environmental Protection
Page 2 of 3

05/14/2021

WW-6B
(10/14)

API NO. 47-4704105713
OPERATOR WELL NO. Flesher 1212 N-9H
Well Pad Name: Flesher 1212

19) Describe proposed well work, including the drilling and plugging back of any pilot hole:

Drill the vertical depth to the Marcellus at an estimated total vertical depth of approximately 6925 feet. Drill horizontal leg to estimated 19,622 lateral length, 28,043 TMD. Hydraulically fracture stimulate and be capable of producing from the Marcellus Formation. Should we encounter an unanticipated void in the coal, we will install a minimum of 20' of casing below the void but not more than 100' below the void, set a basket and grout to surface. We plan to run an ACP above the Gantz/Dominion Storage interval to aid in sealing off and isolating the storage interval.

20) Describe fracturing/stimulating methods in detail, including anticipated max pressure and max rate:

The stimulation will be completed with multiple stages divided over the lateral length of the well. Stage spacing is dependent upon engineering design. Slickwater fracturing technique will be utilized on each stage using sand, water, and chemicals. See attached list. Maximum pressure not to exceed 12,500 psi.

21) Total Area to be disturbed, including roads, stockpile area, pits, etc., (acres): 33.17 acres

22) Area to be disturbed for well pad only, less access road (acres): 6.84 acres

23) Describe centralizer placement for each casing string:

No centralizers will be used with conductor casing.
Freshwater/Coal - centralized every 3 joints to surface.
Intermediate 1 - Bow Spring on every joint, will also be running ACP for isolating storage zone
Intermediate 2 - Bow Spring on first 2 joints then every third joint to 100' from surface.
Production - Run 1 spiral centralizer every 5 joints from the top of the curve to surface. Run 1 spiral centralizer every 3 joints from the 1st 5.5' long joint to the top of the curve.

24) Describe all cement additives associated with each cement type:

Conductor - N/A, Casing to be drilled in w/ Dual Rotary Rig.
Fresh Water/Coal - 15.6 ppg PNE-1 + 3% bwoc CaCl, 40% Excess Yield = 1.20, CTS
Intermediate 1 - Lead: 15.4 ppg PNE-1 + 2.5% bwoc CaCl, 40% Excess / Tail: 15.9 ppg PNE-1 + 2.5% bwoc CaCl zero% Excess, CTS
Intermediate 2 - Lead: 15.4 ppg PNE-1 + 2.5% bwoc CaCl, 40% Excess, Tail: 15.9 ppg, PNE-1 + 2.5% bwoc CaCl, zero% Excess, CTS
Production - Lead: 14.5 ppg POZ.PNE-1 + 0.3% bwoc R3 + 1% bwoc EC1 + 0.75 gal/sk FP13L + 0.3% bwoc MPA170, Tail: 14.8 ppg PNE-1 + 0.35% bwoc R3 + 0.75 gal/sk FP13L + 50% bwoc ASCA1 + 0.5% bwoc MPA170 20% Excess, Lead Yield=1.19, Tail Yield=1.94, CTS

25) Proposed borehole conditioning procedures:

Conductor - Ensure the hole is clean at TD.
Fresh Water/Coal - Once casing is at setting depth, circulate a minimum of one hole volume with Fresh Water prior to pumping cement.
Intermediate 1 - Once casing is at setting depth, Circulate and condition at TD. Circulate a minimum of one hole volume prior to pumping cement.
Intermediate 2 - Once casing is at setting depth, Circulate and condition mud at TD. Circulate a minimum of one hole volume prior to pumping cement.
Production - Once on bottom/TD with casing, circulate at max allowable pump rate for at least 2x bottoms up, or until returns and pump pressures indicate the hole is clean. Circulate a minimum of one hole volume prior to pumping cement.

RECEIVED
Office of Oil and Gas

APR 12

WV Department of
Environmental Protection

*Note: Attach additional sheets as needed.



1212 N-9H
Marcellus Shale Horizontal
Lewis County, WV

RECEIVED
Office of Oil and Gas

APR 12

1212 N-9H SHL

14206097.39N 1785724.78E

Ground Elevation

1332.2'

1212 N-9H LP

14205519.13N 1782734.84E
WV Department of Environmental Protection

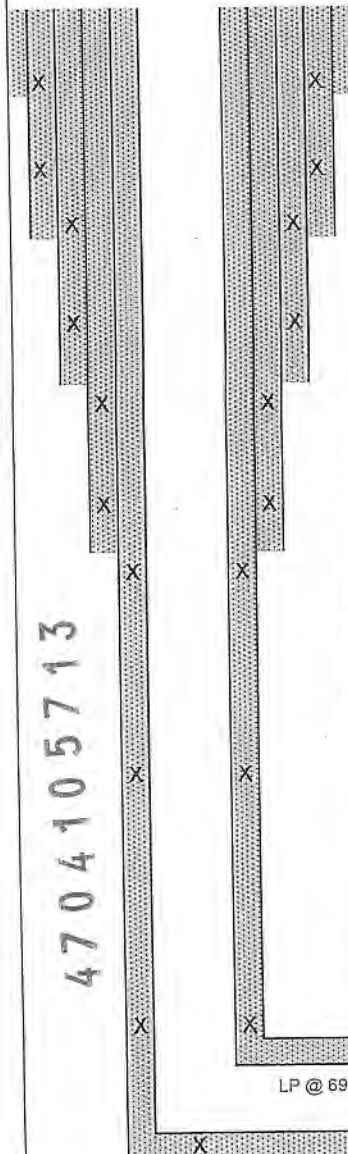
Azm

340.539°

1212 N-9H BHL

14224013.15N 1776199.75E

WELLBORE DIAGRAM



4704105713

HOLE	CASING	GEOLOGY	TOP	BASE	MUD	CEMENT	CENTRALIZERS	CONDITIONING	COMMENTS
30"	30" 157.5# LS	Conductor	0	120	AIR	N/A, Casing to be drilled in w/ Dual Rotary Rig	N/A	Ensure the hole is clean at TD.	Conductor casing = 0.5" wall thickness
26"	20" 94# J-55	Fresh Water	0	105, 273, 302	AIR	15.6 ppg PNE-1 + 3% bwoc CaCl 40% Excess Yield=1.20 / CTS	Centralized every 3 joints to surface	Once casing is at setting depth, circulate a minimum of one hole volume with Fresh Water prior to pumping cement.	Surface casing = 0.438" wall thickness Burst=2110 psi
		Kittaning Coal	987	992					
		Fresh Water Protection	0	1000					
17.5"	13-3/8" 68# J-55 BTC	Big Lime	1548	1613	AIR / KCL Salt Polymer	Lead: 15.4 ppg PNE-1 + 2.5% bwoc CaCl 40% Excess / Tail: 15.9 ppg PNE-1 + 2.5% bwoc CaCl zero% Excess. CTS	Bow Spring on every joint <i>*will also be running ACP for isolating storage zone*</i>	Once casing is at setting depth, Circulate and condition at TD. Circulate a minimum of one hole volume prior to pumping cement.	Intermediate casing = 0.480" wall thickness Burst=3450 psi
		Injun / Ganiz (Storage)	1613 / 1898	1718 / 1958					
		Intermediate 1	0	2100					
12.25"	9-5/8" 40# J-55 BTC	Fifty / Thirty Foot	2008 / 2105	2033 / 2128	AIR / KCL Salt Polymer	Lead: 15.4 ppg PNE-1 + 2.5% bwoc CaCl 40% Excess / Tail: 15.9 ppg PNE-1 + 2.5% bwoc CaCl zero% Excess. CTS	Bow Spring on first 2 joints then every third joint to 100' form surface	Once casing is at setting depth, Circulate and condition mud at TD. Circulate a minimum of one hole volume prior to pumping cement.	Intermediate casing = 0.395" wall thickness Burst=3950 psi
		Gordon Stray / Gordon	2128 / 2198	2198 / 2288					
		5th Sand	2374	2416					
		Bayard Sand	2450	2480					
8.75" Vertical	5-1/2" 23# P-110 HP CDC HTQ	Speechley	3078	3089	AIR / 9.0ppg SOBM	Lead: 14.5 ppg POZ:PNE-1 + 0.3% bwoc R3 + 1% bwoc EC1 + 0.75 gal/sk FP13L + 0.3% bwoc MPA170 Tail: 14.8 ppg PNE-1 + 0.35% bwoc R3 + 0.75 gal/sk FP13L + 50% bwoc ASCA1 + 0.5% bwoc MPA170 20% Excess Lead Yield=1.19 Tail Yield=1.94 CTS	Run 1 spiral centralizer every 5 joints from the top of the curve to surface.	Once on bottom/TD with casing, circulate at max allowable pump rate for at least 2x bottoms up, or until returns and pump pressures indicate the hole is clean. Circulate a minimum of one hole volume prior to pumping cement.	Production casing = 0.415" wall thickness Burst=16240 psi Note: Actual centralizer schedules may be changed due to hole conditions
		Balltown	3278	3350					
		Benson	4370	4382					
8.5" Curve		Rhinestreet	6256	6445	11.5ppg-12.5ppg SOBM		Run 1 spiral centralizer every 3 joints from the 1st 5.5" long joint to the top of the curve.		
		Cashaqua	6445	6526					
		Middlesex	6526	6625					
		West River	6625	6660					
		Burkett	6660	6751					
		Tully Limestone	6751	6815					
		Hamilton	6815	6753					
8.5" Lateral	Marcellus	6845	6927	11.5ppg-12.5ppg SOBM					
	TMD / TVD (Production)	28043	6925						
		Onondaga	6927						

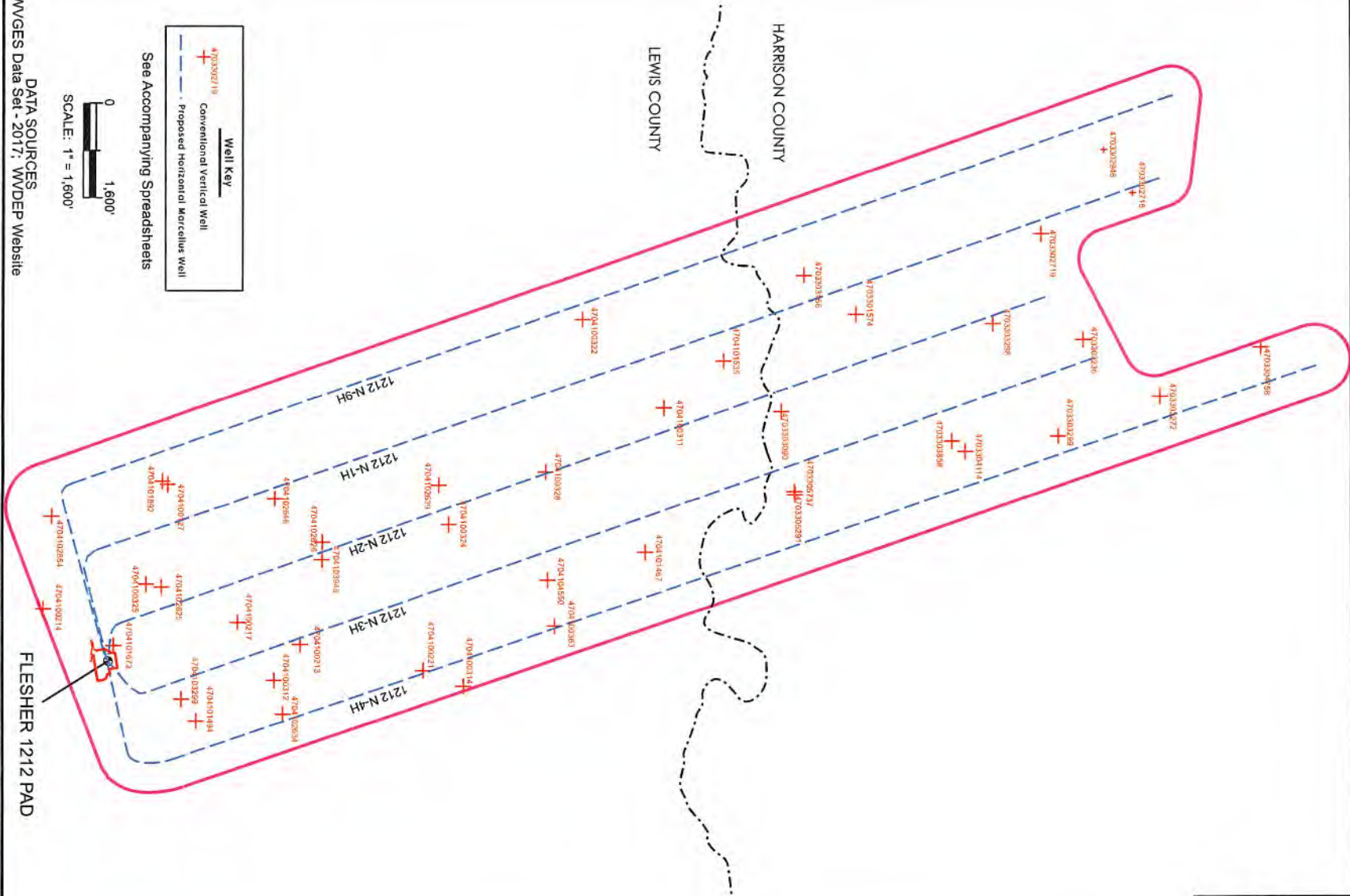
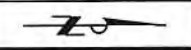
LP @ 6925' TVD / 8421' MD

8.5" Hole - Cemented Long String
5-1/2" 23# P-110 HP CDC HTQ

+/-19622' ft Lateral

TD @ +/-6925' TVD
+/-28043' MD

X=centralizers



Well Key

- 4703302718 Conventional Vertical Well
- Proposed Horizontal Morcellus Well

See Accompanying Spreadsheets



DATA SOURCES
WVGES Data Set - 2017; WVDEP Website

Area of Review for:

FLESHER 1212 NORTH UNIT

- Proposed 1212 N-1H Proposed 1212 N-2H
- Proposed 1212 N-3H Proposed 1212 N-4H
- Proposed 1212 N-9H

Freeman's Creek District, Lewis County, W.Va.
& Union District, Harrison County, W.Va.

HG ENERGY, II APPALACHIA, LLC
5760 DuPont Road, Parkersburg, WV 26101

Updated: 5/12/2021

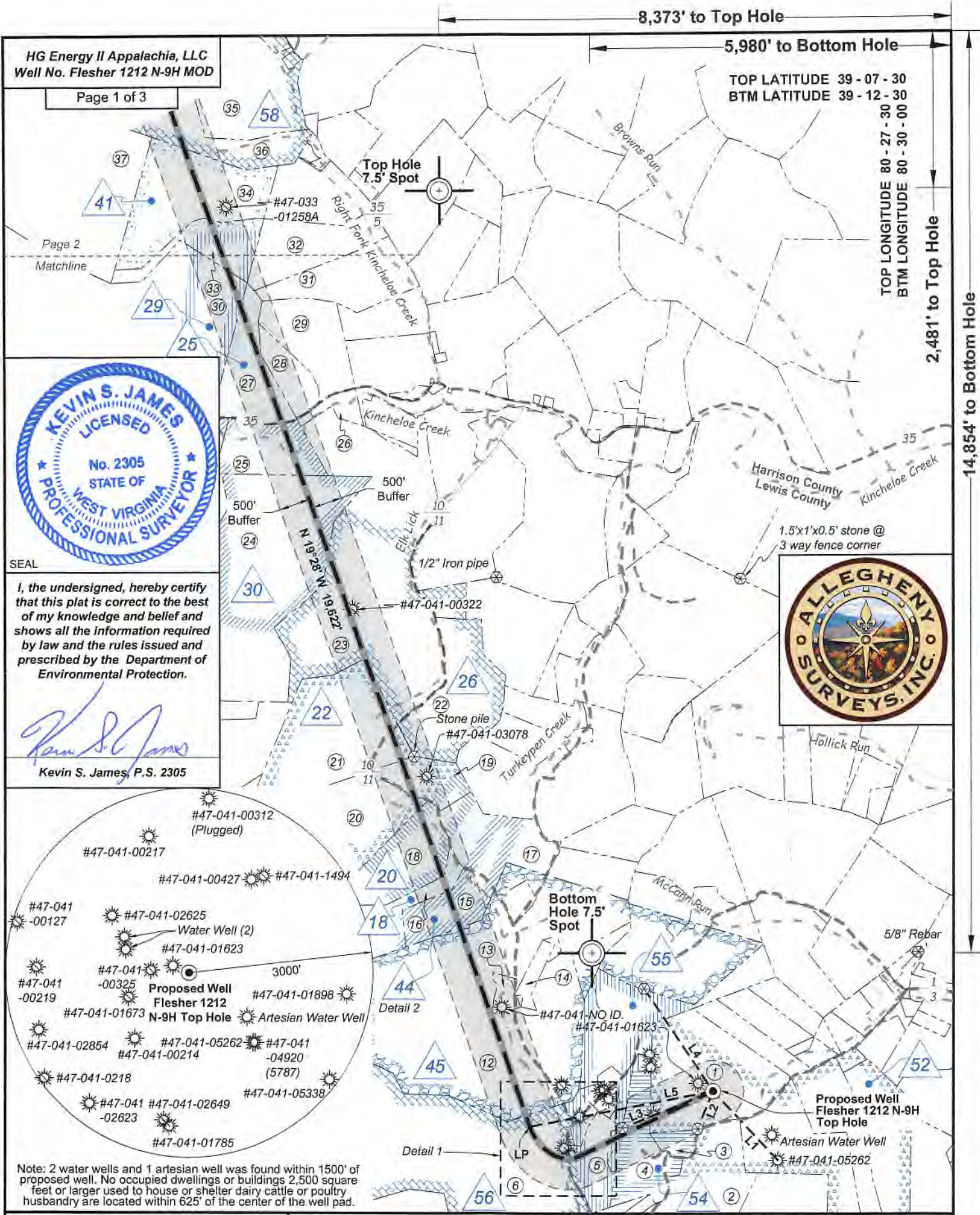


**EXISTING WELLS LOCATED WITHIN THE AREA OF REVIEW FOR:
FLESHER 1212 NORTH UNIT AND PROPOSED WELLS N-1H, N-2H, N-3H, N-4H & N-9H**

CT	API	COUNTY	FARM	OPERATOR NAME	FORMATION NAME	WELL TYPE	TVD	STATUS	LATITUDE	LONGITUDE
1	4703301574	Harrison	Beeghley	Dominion Energy Transmission, Inc.	Hampshire Grp	Gas	2625	ACTIVE	39.152970	-80.508015
2	4703302718	Harrison	Coffindaaffer, J	Tenmile Land LLC	Elk	Gas	5526	ACTIVE	39.165741	-80.515096
3	4703302719	Harrison	Coffindaaffer, J	Tenmile Land LLC	Elk	Gas	5512	ACTIVE	39.161514	-80.512726
4	4703302946	Harrison	Coffindaaffer, J	Tenmile Land LLC	Elk	Gas	5693	ACTIVE	39.164435	-80.517705
5	4703303090	Harrison	C C Tallman/M P Davis 1	Dominion Energy Transmission, Inc.	Hampshire Grp	Gas	2385	PLUGGED	39.149500	-80.502237
6	4703303166	Harrison	R Stanley	Dominion Energy Transmission, Inc.	Alexander	Gas	5273	ACTIVE	39.150573	-80.510360
7	4703303236	Harrison	William L/S Coffindaffer	Alliance Petroleum Co., LLC	Greenland Gap Fm	Gas	5200	ACTIVE	39.163430	-80.506373
8	4703303272	Harrison	William L Coffindaffer	Alliance Petroleum Co., LLC	Greenland Gap Fm	Gas	5000	ACTIVE	39.166933	-80.502915
9	4703303298	Harrison	Loxie V McLung	Alliance Petroleum Co., LLC	Balltown	Oil and Gas	3650	ACTIVE	39.159262	-80.507375
10	4703303299	Harrison	Sherry D Baldwin etal	Alliance Petroleum Co., LLC	Greenland Gap Fm	Gas	5100	ACTIVE	39.162227	-80.500606
11	4703303858	Harrison	Catherine C Price	Diversified Resources, Inc.	not available	not available	-	Not Drilled	39.157331	-80.500374
12	4703304114	Harrison	Catherine C Price 1	Enervest Operating, LLC	Greenland Gap Fm	Gas	4800	ACTIVE	39.157941	-80.499754
13	4703304758	Harrison	Geraldine C Dickenson Est	Dominion Energy Transmission, Inc.	Benson	Gas	4950	ACTIVE	39.171609	-80.505825
14	4703305291	Harrison	William R Dallas	Consol Gas Company	not available	not available	-	Not Drilled	39.150104	-80.497282
15	4703305737	Harrison	William R Dallas	Dominion Energy Transmission, Inc.	Alexander	Gas	4950	ACTIVE	39.150090	-80.497450
16	4704100127	Lewis	Edwin Gaston	Dominion Energy Transmission, Inc.	Fifth	Gas	2380	PLUGGED	39.121173	-80.498140
17	4704100213	Lewis	W T Garton	Dominion Energy Transmission, Inc.	Gantz	Storage	1850	ACTIVE	39.127276	-80.488549
18	4704100214	Lewis	Geo Norris	Dominion Energy Transmission, Inc.	Hampshire Grp	Storage	2275	ACTIVE	39.115382	-80.490758
19	4704100217	Lewis	Edwin Gaston	Dominion Energy Transmission, Inc.	Gantz	Storage	1890	ACTIVE	39.124393	-80.489885
20	4704100221	Lewis	F L Post 2	Dominion Energy Transmission, Inc.	Gantz	Storage	1970	ACTIVE	39.132930	-80.486946
21	4704100311	Lewis	A Hughes	Dominion Energy Transmission, Inc.	Up Devonian	Storage	2199	ACTIVE	39.144083	-80.502504
22	4704100312	Lewis	W T Garton	Dominion Energy Transmission, Inc.	Hampshire Grp	Gas	2263	PLUGGED	39.126053	-80.486425
23	4704100314	Lewis	F L Post	Dominion Energy Transmission, Inc.	Hampshire Grp	Storage	2397	ACTIVE	39.134769	-80.485998
24	4704100322	Lewis	A H Hughes	UNKNOWN	Hampshire Grp	Gas	2601	PLUGGED	39.140364	-80.507823
25	4704100324	Lewis	Clark Gaston	Dominion Energy Transmission, Inc.	Hampshire Grp	Storage	2106	ACTIVE	39.134155	-80.495652
26	4704100325	Lewis	George Norris	Hope Natural Gas Company	Hampshire Grp	Gas	2228	PLUGGED	39.120161	-80.492216
27	4704100328	Lewis	H J Hughes	Dominion Energy Transmission, Inc.	Hampshire Grp	Storage	2401	ACTIVE	39.138624	-80.498743
28	4704100363	Lewis	N J Oldaker	UNKNOWN	Up Devonian	Storage	1905	PLUGGED	39.139006	-80.489544
29	4704101467	Lewis	H J Hughes	UNKNOWN	Fifth	Storage	2407	PLUGGED	39.143186	-80.493922
30	4704101494	Lewis	S R Hall	Dominion Energy Transmission, Inc.	Fifth	Storage	2453	ACTIVE	39.122439	-80.484011
31	4704101535	Lewis	Virginia Hughes	Dominion Energy Transmission, Inc.	Fifth	Dry	2576	PLUGGED	39.146842	-80.505298
32	4704101673	Lewis	Cecil I Dempsey	Dominion Energy Transmission, Inc.	Greenland Gap Fm	Gas	4509	ACTIVE	39.118627	-80.488538
33	4704101892	Lewis	Edwin Gaston	Dominion Energy Transmission, Inc.	Benson	Storage	4470	ACTIVE	39.120917	-80.498325

34	4704102625	Lewis	J S Norris	Dominion Energy Transmission, Inc.	not available	Storage	-	ACTIVE	39.120873	-80.492026	
35	4704102626	Lewis	A R Frashuer	Dominion Energy Transmission, Inc.	not available	Storage	-	ACTIVE	39.128328	-80.494641	
36	4704102634	Lewis	T S Allman	Dominion Energy Transmission, Inc.	not available	Storage	-	ACTIVE	39.126443	-80.484399	
37	4704102639	Lewis	H L Frashuer	Dominion Energy Transmission, Inc.	not available	Storage	-	ACTIVE	39.133693	-80.497995	
38	4704102648	Lewis	Edwin Gaston	Dominion Energy Transmission, Inc.	not available	Storage	-	ACTIVE	39.126152	-80.497246	
39	4704102854	Lewis	J S Norris	Dominion Energy Transmission, Inc.	not available	Storage	-	ACTIVE	39.115783	-80.496273	
40	4704103299	Lewis	Susan Hall	Dominion Energy Transmission, Inc.	not available	not available	2368	PLUGGED	39.122284	-80.485081	
41	4704103948	Lewis	John Mann	Dominion Energy Transmission, Inc.	Greenland Gap Fm	Gas	4575	ACTIVE	39.128306	-80.493609	
42	4704104550	Lewis	R E/Terry Brincefield	Dominion Energy Transmission, Inc.	Greenland Gap Fm	Gas	4618	ACTIVE	39.138691	-80.492300	
UPDATED 5/12/2021				YELLOW DENOTES WELL WITH TVD > 4,500'				GREEN DENOTES SURVEYED WELLS			

SOURCE: WVGES DATASET (2020) and WVDEP WEBSITE AND FIELD SURVEYS



HG Energy II Appalachia, LLC
Well No. Flesher 1212 N-9H MOD

Page 1 of 3

Page 2 Matchline



I, the undersigned, hereby certify that this plat is correct to the best of my knowledge and belief and shows all the information required by law and the rules issued and prescribed by the Department of Environmental Protection.

Kevin S. James

Kevin S. James, P.S. 2305



Note: 2 water wells and 1 artesian well was found within 1500' of proposed well. No occupied dwellings or buildings 2,500 square feet or larger used to house or shelter dairy cattle or poultry husbandry are located within 625' of the center of the well pad.

FILE NO: 156-36-12-U-F-19
DRAWING NO: Flesher 1212 N-9H Well Plat
SCALE: 1" = 2000'
MINIMUM DEGREE OF ACCURACY: Submeter
PROVEN SOURCE OF ELEVATION: CORS, Bridgeport, WV

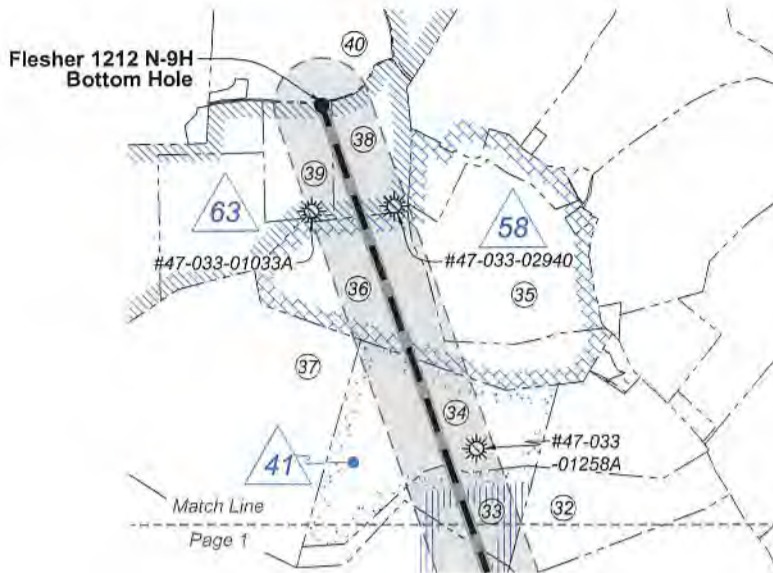
STATE OF WEST VIRGINIA
DEPARTMENT OF ENVIRONMENTAL PROTECTION
OIL AND GAS DIVISION

DATE: April 1 2021
OPERATOR'S WELL NO. Flesher 1212 N-9H
API WELL NO
47 - 041 - 05713
STATE COUNTY PERMIT

WELL TYPE: OIL GAS LIQUID INJECTION WASTE DISPOSAL
(IF GAS) PRODUCTION: STORAGE DEEP SHALLOW

LOCATION: ELEVATION: 1,332.2' WATERSHED: Middle West Fork Creek
DISTRICT: Freemans Creek
SURFACE OWNER: H.G. Energy II Appalachia, LLC
ROYALTY OWNER: W.D. Hitt, et al, et al LEASE NO: ACREAGE: 210.00
PROPOSED WORK: DRILL CONVERT DRILL DEEPER FRACTURE OR STIMULATE PLUG OFF OLD FORMATION
 PERFORATE NEW FORMATION OTHER PHYSICAL CHANGE IN WELL (SPECIFY) BHL MOD
 PLUG AND ABANDON CLEAN OUT AND REPLUG TARGET FORMATION: Marcellus Shale ESTIMATED DEPTH: 28,043' MD

WELL OPERATOR: HG Energy II Appalachia, LLC DESIGNATED AGENT: Diane C. White
ADDRESS: 5260 Dupont Road ADDRESS: 5260 Dupont Road
Parkersburg, WV 26101 Parkersburg, WV 26101

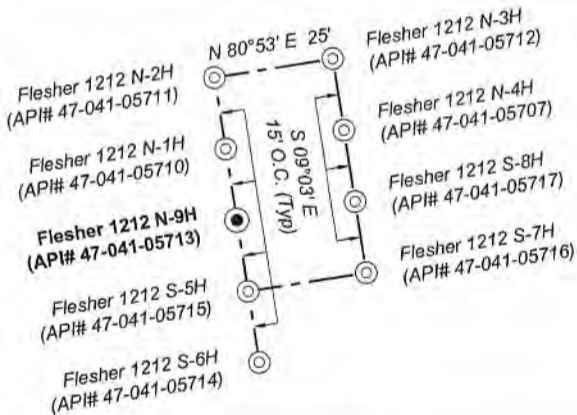


Notes: Well No. Flesher 1212 N-9H
West Virginia Coordinate System of 1927, North Zone
based upon Differential GPS Measurements.
Top Hole coordinates Bottom Hole coordinates
Latitude: 39°07'05.47" Latitude: 39°10'03.13"
Longitude: 80°29'16.27" Longitude: 80°31'15.96"
UTM Zone 17, NAD 1983
Top Hole Coordinates Bottom Hole Coordinates
N: 4,330,027.145m N: 4,335,487.882m
E: 544,290.002m E: 541,386.768m
Plat orientation and corner and well references are
based upon the grid north meridian. Well location
references are based upon the magnetic meridian.

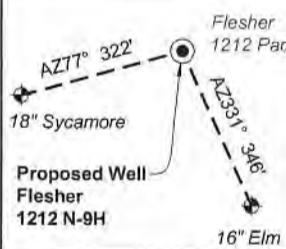
Notes:
Well No. Flesher 1212 N-9H
UTM NAD 1983 (USSF)
Top Hole Coordinates
N: 14,206,097.39'
E: 1,785,724.78'
Landing Point Coordinates
N: 14,205,519.13'
E: 1,782,734.84'
Bottom Hole Coordinates
N: 14,224,013.15'
E: 1,776,199.75'

Tag	Bearing	Dist.	Description
L1	N 43°11' W	1,539.9'	#47-041-05262
L2	N 22°20' E	663.6'	1/2" Rebar
L3	N 68°00' E	1,594.4'	1" Iron pipe
L4	S 34°14' E	2,006.4'	5/8" Rebar
L5	S 79°03' W	3,045.3'	Landing point

Wellhead Layout (NTS)



Well Location References
Not to Scale



Legend

- Proposed gas well
- Well Reference, as noted
- Monument, as noted
- Existing Well, as noted
- Digitized Well, as noted
- Creek or Drain
- Existing Road
- Surface boundary (approx.)
- Interior surface tracts (approx.)

FILE NO: 156-36-12-U-F-19
DRAWING NO: Flesher 1212 N-9H Well Plat
SCALE: 1" = 2000'
MINIMUM DEGREE OF ACCURACY:
Submeter
PROVEN SOURCE OF ELEVATION:
CORS, Bridgeport, WV

STATE OF WEST VIRGINIA
DEPARTMENT OF ENVIRONMENTAL PROTECTION
OIL AND GAS DIVISION

DATE: April 1 2021
OPERATOR'S WELL NO. Flesher 1212 N-9H
API WELL NO
47 - 041 - 05713
STATE COUNTY PERMIT

WELL TYPE: OIL GAS LIQUID INJECTION WASTE DISPOSAL
(IF GAS) PRODUCTION: STORAGE DEEP SHALLOW

LOCATION: ELEVATION: 1,332.2' WATERSHED: Middle West Fork Creek

Btm: Big Isaac
Top: Weston
QUADRANGLE: Lewis
COUNTY: Lewis
ACREAGE: 70.00

DISTRICT: Freemans Creek
SURFACE OWNER: H.G. Energy II Appalachia, LLC

ROYALTY OWNER: W.D. Hitt, et al, et al

LEASE NO: ACREAGE: 210.00

PROPOSED WORK: DRILL CONVERT DRILL DEEPER FRACTURE OR STIMULATE PLUG OFF OLD FORMATION
 PERFORATE NEW FORMATION OTHER PHYSICAL CHANGE IN WELL (SPECIFY) BHL MOD

PLUG AND ABANDON CLEAN OUT AND REPLUG TARGET FORMATION: Marcellus Shale ESTIMATED DEPTH: 28,043' MD 6,925' TVD

WELL OPERATOR: HG Energy II Appalachia, LLC
ADDRESS: 5260 Dupont Road
Parkersburg, WV 26101

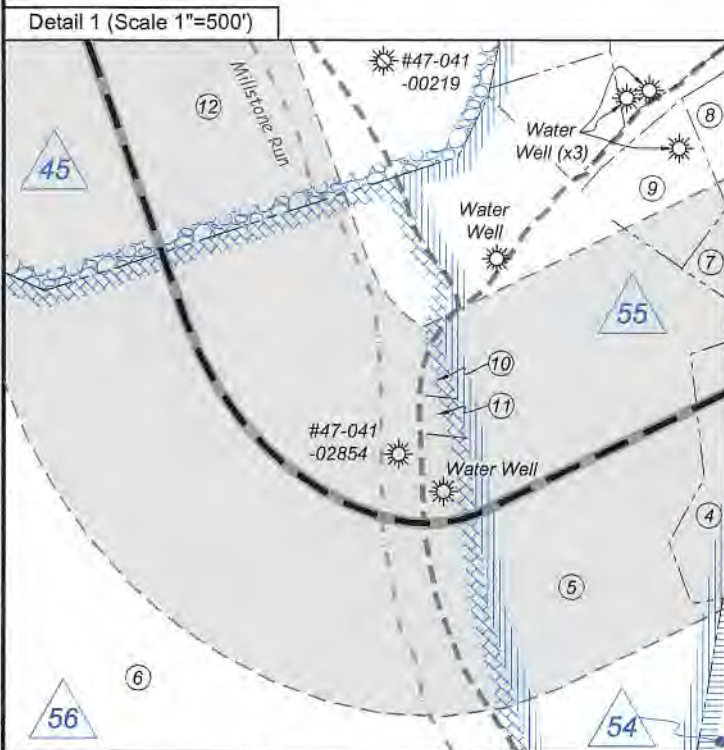
DESIGNATED AGENT: Diane C. White
ADDRESS: 5260 Dupont Road
Parkersburg, WV 26101



ID	Lease
18	A.H. Reed, et al
20	A.H. Reed, et al
22	Carrie Dillin, et al
25	Lizzie B. Conley
26	Alvadore Hughes, et al
29	W.W. Paugh, et al
30	W.H. Coffindaffer, et al
41	Betty A. Coffindaffer, et al
44	A.H. Reed, et al
45	Edwin Gaston, et al
52	W.D. Hitt, et al
54	Paarlie A. Norris, et al
55	J.S. Norris, et al
56	J.S. Norris
58	Robert W. Coffindaffer, et al
63	E.J. Rightmire, et ux

Lewis Co. - Freeman Creek Dist.				
No.	TM / Par	Owner	Bk / Pg	Ac.
1	6C / 47	HG Energy II Appalachia, LLC	753 / 453	70.00
2	6C / 43	Gary Allen Sias	646 / 688	50.59
3	6C / 25.1	William Radtka & Helen Burton	655 / 681	5.85
4	6C / 25	Robert M. Painter	629 / 411	27.48
5	6C / 23.2	Michael & Laura Phillips	661 / 298	21.32
6	6C / 21	Thomas R. Zinn, et al	445 / 493	166.25
7	6C / 23.4	Richard G. Hayhurst, et ux	565 / 326	4.13
8	6C / 23.10	Gary Farris	700 / 769	0.65
9	6C / 23.6	Gary Farris	700 / 769	2.02
10	6C / 23.1	Michael & Laura Phillips	661 / 298	0.16
11	6C / 23.9	Michael & Laura Phillips	661 / 298	0.25
12	6C / 22	Mann Family Trust	617 / 608	265.19
13	6C / 22.3	MannFarm, LLC	722 / 660	5.00
14	6C / 22.2	Stephen P. & Wendy T. Mann	718 / 175	5.97
15	6B / 12	Edward E. Garrett, et al	429 / 245	27.75
16	6B / 11	Edward E. Garrett, et al	429 / 245	30.00
17	6B / 13	Mann Family Trust	617 / 608	38.55
18	6B / 14	Edward E. Garrett, et al	429 / 245	30.00
19	6B / 16	Mann Family Trust	617 / 608	21.45
20	6B / 15	Edward E. Garrett, et al	429 / 245	30.75
21	6B / 18	Berlin Family Irrevocable Trust	743 / 893	100.00
22	6B / 19.1	Robert E. Brincefield, Jr. & Terri Lynne Trust, et al	578 / 630	52.00
23	6B / 21	Mark D. Roles	W50 / 769	195.91
24	6B / 3	Eric B. & Kathy A. Beevers	509 / 197	99.00

Harrison Co. - Union-Outside Dist.				
No.	TM / Par	Owner	Bk / Pg	Ac.
25	442 / 12	Eric & Kathy Beevers	1237 / 941	30.00
26	442 / 14	Jackie & Barbara Caplinger	1416 / 1052	12.00
27	442 / 11	Douglas L. & Donna S. Nolan	1478 / 929	34.13
28	442 / 13.1	Virginia E. Grogg	1379 / 1109	15.20
29	442 / 13	Kimberly S. Shaw	1544 / 132	34.02
30	442 / 10	Mike Ross Inc., et al	1590 / 158	64.53
31	422 / 38	Jody B. Ross & Dawn R. Price	1283 / 546	36.77
32	422 / 37	Jody B. Ross & Dawn R. Price	1283 / 546	34.70
33	422 / 34.1	Mark J. Coffindaffer, et al	W160 / 415	24.07
34	422 / 34	Terry Bostardi, et al	1617 / 374	66.56
35	422 / 18	Stephen J. & Freda P. Perkins	1258 / 66	61.60
36	422 / 16	Terry Bostardi, et al	1617 / 374	62.61
37	422 / 33	Mark J. Coffindaffer, et al	W160 / 415	125.75
38	422 / 15.1	Stephen J. & Freda P. Perkins	1560 / 347	61.48
39	422 / 15	Betty Jo Keister	1560 / 399	20.01
40	422 / 5	William L. & Sandra L. Coffindaffer	1018 / 715	65.29



FILE NO: 156-36-12-U-F-19
DRAWING NO: Flesher 1212 N-9H Well Plat
SCALE: 1" = 2000'
MINIMUM DEGREE OF ACCURACY: Submeter
PROVEN SOURCE OF ELEVATION: CORS, Bridgeport, WV

STATE OF WEST VIRGINIA
DEPARTMENT OF ENVIRONMENTAL PROTECTION
OIL AND GAS DIVISION

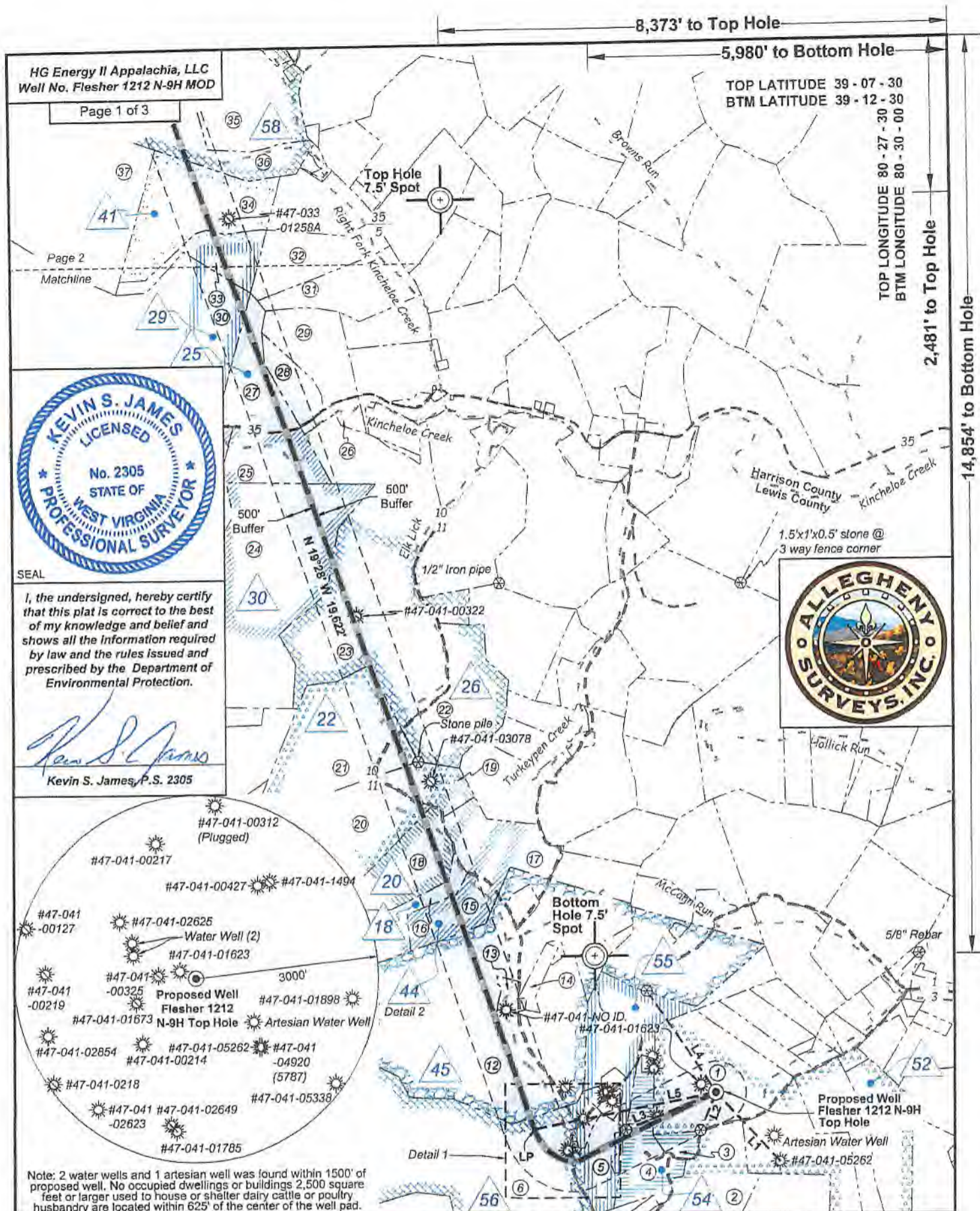
DATE: April 1 2021
OPERATOR'S WELL NO. Flesher 1212 N-9H
API WELL NO
47 - 041 - 05713
STATE COUNTY PERMIT

WELL TYPE: OIL GAS LIQUID INJECTION WASTE DISPOSAL
(IF GAS) PRODUCTION: STORAGE DEEP SHALLOW

LOCATION: ELEVATION: 1,332.2' WATERSHED: Middle West Fork Creek
DISTRICT: Freemans Creek
SURFACE OWNER: H.G. Energy II Appalachia, LLC
ROYALTY OWNER: W.D. Hitt, et al, et al LEASE NO: ACREAGE: 210.00

PROPOSED WORK: DRILL CONVERT DRILL DEEPER FRACTURE OR STIMULATE PLUG OFF OLD FORMATION
 PERFORATE NEW FORMATION OTHER PHYSICAL CHANGE IN WELL (SPECIFY) BHL MOD
 PLUG AND ABANDON CLEAN OUT AND REPLUG TARGET FORMATION: Marcellus Shale ESTIMATED DEPTH: 28,043' MD

WELL OPERATOR: HG Energy II Appalachia, LLC DESIGNATED AGENT: Diane C. White
ADDRESS: 5260 Dupont Road ADDRESS: 5260 Dupont Road
Parkersburg, WV 26101 Parkersburg, WV 26101



HG Energy II Appalachia, LLC
Well No. Flesher 1212 N-9H MOD

TOP LATITUDE 39 - 07 - 30
BTM LATITUDE 39 - 12 - 30

TOP LONGITUDE 80 - 27 - 30
BTM LONGITUDE 80 - 30 - 00

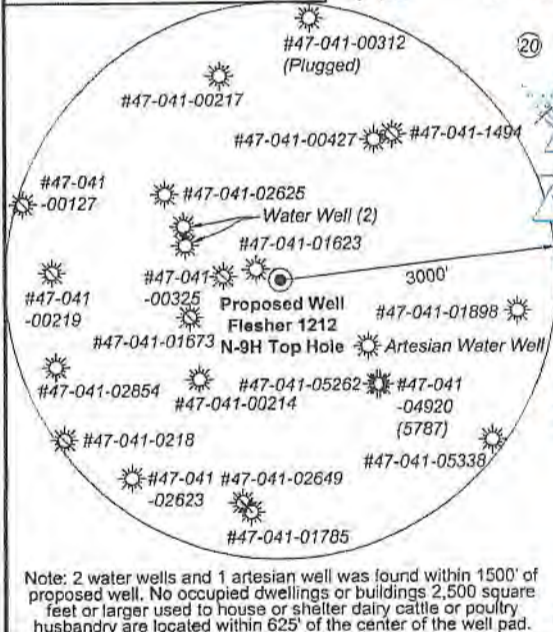
Page 1 of 3

Page 2
Matchline



I, the undersigned, hereby certify that this plat is correct to the best of my knowledge and belief and shows all the information required by law and the rules issued and prescribed by the Department of Environmental Protection.

Kevin S. James
Kevin S. James, P.S. 2305



Note: 2 water wells and 1 artesian well was found within 1500' of proposed well. No occupied dwellings or buildings 2,500 square feet or larger used to house or shelter dairy cattle or poultry husbandry are located within 625' of the center of the well pad.

FILE NO: 156-36-12-U-F-19
DRAWING NO: Flesher 1212 N-9H Well Plat
SCALE: 1" = 2000'
MINIMUM DEGREE OF ACCURACY: Submeter
PROVEN SOURCE OF ELEVATION: CORS, Bridgeport, WV

STATE OF WEST VIRGINIA
DEPARTMENT OF ENVIRONMENTAL PROTECTION
OIL AND GAS DIVISION

DATE: April 1 2021
OPERATOR'S WELL NO. Flesher 1212 N-9H
API WELL NO
47 - 041 - 05713
STATE COUNTY PERMIT

WELL TYPE: OIL GAS LIQUID INJECTION WASTE DISPOSAL
(IF GAS) PRODUCTION: STORAGE DEEP SHALLOW

LOCATION: ELEVATION: 1,332.2' WATERSHED: Middle West Fork Creek
DISTRICT: Freemans Creek

SURFACE OWNER: H.G. Energy II Appalachia, LLC
ROYALTY OWNER: W.D. Hitt, et al, et al LEASE NO: ACREAGE: 210.00

PROPOSED WORK: DRILL CONVERT DRILL DEEPER FRACTURE OR STIMULATE PLUG OFF OLD FORMATION
 PERFORATE NEW FORMATION OTHER PHYSICAL CHANGE IN WELL (SPECIFY) BHL MOD
 PLUG AND ABANDON CLEAN OUT AND REPLUG TARGET FORMATION: Marcellus Shale ESTIMATED DEPTH: 28,043' MD

WELL OPERATOR: HG Energy II Appalachia, LLC DESIGNATED AGENT: Diane C. White
ADDRESS: 5260 Dupont Road ADDRESS: 5260 Dupont Road
Parkersburg, WV 26101 Parkersburg, WV 26101

05/14/2021

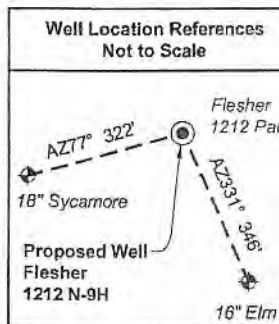
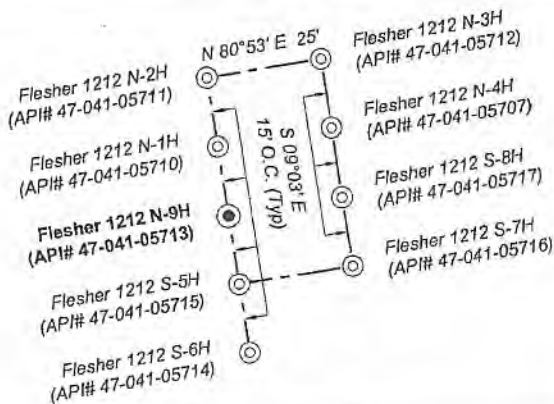


Notes: Well No. Flesher 1212 N-9H
West Virginia Coordinate System of 1927, North Zone
based upon Differential GPS Measurements.
Top Hole coordinates Bottom Hole coordinates
Latitude: 39°07'05.47" Latitude: 39°10'03.13"
Longitude: 80°29'16.27" Longitude: 80°31'15.96"
UTM Zone 17, NAD 1983
Top Hole Coordinates Bottom Hole Coordinates
N: 4,330,027.145m N: 4,335,487.882m
E: 544,290.002m E: 541,386.768m
Plat orientation and corner and well references are
based upon the grid north meridian. Well location
references are based upon the magnetic meridian.

Notes:
Well No. Flesher 1212 N-9H
UTM NAD 1983 (USSF)
Top Hole Coordinates
N: 14,206,097.39'
E: 1,785,724.78'
Landing Point Coordinates
N: 14,205,519.13'
E: 1,782,734.84'
Bottom Hole Coordinates
N: 14,224,013.15'
E: 1,776,199.75'

Tag	Bearing	Dist.	Description
L1	N 43°11' W	1,539.9'	#47-041-05262
L2	N 22°20' E	663.6'	1/2" Rebar
L3	N 68°00' E	1,594.4'	1" Iron pipe
L4	S 34°14' E	2,006.4'	5/8" Rebar
L5	S 79°03' W	3,045.3'	Landing point

Wellhead Layout (NTS)



Well Location References Not to Scale	Legend
	Proposed gas well
	Well Reference, as noted
	Monument, as noted
	Existing Well, as noted
	Digitized Well, as noted
	Creek or Drain
	Existing Road
	Surface boundary (approx.)
	Interior surface tracts (approx.)

FILE NO: 156-36-12-U-F-19
DRAWING NO: Flesher 1212 N-9H Well Plat
SCALE: 1" = 2000'
MINIMUM DEGREE OF ACCURACY:
Submeter
PROVEN SOURCE OF ELEVATION:
CORS, Bridgeport, WV

STATE OF WEST VIRGINIA
DEPARTMENT OF ENVIRONMENTAL PROTECTION
OIL AND GAS DIVISION

DATE: April 1 2021
OPERATOR'S WELL NO. Flesher 1212 N-9H
API WELL NO
47 — 041 — 05713
STATE COUNTY PERMIT

WELL TYPE: OIL GAS LIQUID INJECTION WASTE DISPOSAL
(IF GAS) PRODUCTION: STORAGE DEEP SHALLOW

LOCATION: ELEVATION: 1,332.2' WATERSHED: Middle West Fork Creek

QUADRANGLE: Btm: Big Isaac
Top: Weston

DISTRICT: Freemans Creek

COUNTY: Lewis

SURFACE OWNER: H.G. Energy II Appalachia, LLC

ACREAGE: 70.00

ROYALTY OWNER: W.D. Hitt, et al, et al

LEASE NO: ACREAGE: 210.00

PROPOSED WORK: DRILL CONVERT DRILL DEEPER FRACTURE OR STIMULATE PLUG OFF OLD FORMATION
 PERFORATE NEW FORMATION OTHER PHYSICAL CHANGE IN WELL (SPECIFY) BHL MOD

PLUG AND ABANDON CLEAN OUT AND REPLUG TARGET FORMATION: Marcellus Shale ESTIMATED DEPTH: 6,925' TVD
28,043' MD

WELL OPERATOR: HG Energy II Appalachia, LLC

DESIGNATED AGENT: Diane C. White

ADDRESS: 5260 Dupont Road
Parkersburg, WV 26101

ADDRESS: 5260 Dupont Road
Parkersburg, WV 26101

05/14/2021



ID	Lease
18	A.H. Reed, et al
20	A.H. Reed, et al
22	Carrie Dillin, et al
25	Lizzie B. Conley
26	Alvadore Hughes, et al
29	W.W. Paugh, et al
30	W.H. Coffindaffer, et al
41	Betty A. Coffindaffer, et al
44	A.H. Reed, et al
45	Edwin Gaston, et al
52	W.D. Hitt, et al
54	Pearle A. Norris, et al
55	J.S. Norris, et al
58	J.S. Norris
58	Robert W. Coffindaffer, et al
63	E.J. Rightmire, et ux

Lewis Co. - Freeman Creek Dist.				
No.	TM / Par	Owner	Bk / Pg	Ac.
1	6C / 47	HG Energy II Appalachia, LLC	753 / 453	70.00
2	6C / 43	Gary Allen Sias	646 / 688	50.59
3	6C / 25.1	William Radtka & Helen Burton	655 / 681	5.85
4	6C / 25	Robert M. Painter	629 / 411	27.48
5	6C / 23.2	Michael & Laura Phillips	661 / 298	21.32
6	6C / 21	Thomas R. Zinn, et al	445 / 493	166.25
7	6C / 23.4	Richard G. Hayhurst, et ux	565 / 326	4.13
8	6C / 23.10	Gary Farris	700 / 769	0.65
9	6C / 23.6	Gary Farris	700 / 769	2.02
10	6C / 23.1	Michael & Laura Phillips	661 / 298	0.16
11	6C / 23.9	Michael & Laura Phillips	661 / 298	0.25
12	6C / 22	Mann Family Trust	617 / 608	265.19
13	6C / 22.3	MannFarm, LLC	722 / 660	5.00
14	6C / 22.2	Stephen P. & Wendy T. Mann	718 / 175	5.97
15	6B / 12	Edward E. Garrett, et al	429 / 245	27.75
16	6B / 11	Edward E. Garrett, et al	429 / 245	30.00
17	6B / 13	Mann Family Trust	617 / 608	38.55
18	6B / 14	Edward E. Garrett, et al	429 / 245	30.00
19	6B / 16	Mann Family Trust	617 / 608	21.45
20	6B / 15	Edward E. Garrett, et al	429 / 245	30.75
21	6B / 18	Berlin Family Irrevocable Trust	743 / 893	100.00
22	6B / 19.1	Robert E. Brincefield, Jr. & Terri Lynne Trust, et al	578 / 630	52.00
23	6B / 21	Mark D. Roles	W50 / 769	195.91
24	6B / 3	Eric B. & Kathy A. Beevers	509 / 197	99.00

Harrison Co. - Union-Outside Dist.				
No.	TM / Par	Owner	Bk / Pg	Ac.
25	442 / 12	Eric & Kathy Beevers	1237 / 941	30.00
26	442 / 14	Jackie & Barbara Caplinger	1416 / 1052	12.00
27	442 / 11	Douglas L. & Donna S. Nolan	1478 / 929	34.13
28	442 / 13.1	Virginia E. Grogg	1379 / 1109	15.20
29	442 / 13	Kimberly S. Shaw	1544 / 132	34.02
30	442 / 10	Mike Ross Inc., et al	1590 / 158	64.53
31	422 / 38	Jody B. Ross & Dawn R. Price	1283 / 546	36.77
32	422 / 37	Jody B. Ross & Dawn R. Price	1283 / 546	34.70
33	422 / 34.1	Mark J. Coffindaffer, et al	W160 / 415	24.07
34	422 / 34	Terry Bostardi, et al	1617 / 374	66.56
35	422 / 18	Stephen J. & Freda P. Perkins	1258 / 66	61.60
36	422 / 16	Terry Bostardi, et al	1617 / 374	62.61
37	422 / 33	Mark J. Coffindaffer, et al	W160 / 415	125.75
38	422 / 15.1	Stephen J. & Freda P. Perkins	1560 / 347	61.48
39	422 / 15	Betty Jo Keister	1560 / 399	20.01
40	422 / 5	William L. & Sandra L. Coffindaffer	1018 / 715	65.29



FILE NO: 156-36-12-U-F-19
DRAWING NO: Flesher 1212 N-9H Well Plat
SCALE: 1" = 2000'
MINIMUM DEGREE OF ACCURACY:
Submeter
PROVEN SOURCE OF ELEVATION:
CORS, Bridgeport, WV

STATE OF WEST VIRGINIA
DEPARTMENT OF ENVIRONMENTAL PROTECTION
OIL AND GAS DIVISION

DATE: April 1 2021
OPERATOR'S WELL NO. Flesher 1212 N-9H
API WELL NO
47 - 041 - 05713
STATE COUNTY PERMIT

WELL TYPE: OIL GAS LIQUID INJECTION WASTE DISPOSAL
(IF GAS) PRODUCTION: STORAGE DEEP SHALLOW

LOCATION: ELEVATION: 1,332.2' WATERSHED: Middle West Fork Creek
DISTRICT: Freemans Creek

Btm: Big Isaac
QUADRANGLE: Top: Weston
COUNTY: Lewis

SURFACE OWNER: H.G. Energy II Appalachia, LLC
ROYALTY OWNER: W.D. Hitt, et al, et al

ACREAGE: 70.00 **05/14/2021**

LEASE NO: _____ ACREAGE: 210.00
PROPOSED WORK: DRILL CONVERT DRILL DEEPER FRACTURE OR STIMULATE PLUG OFF OLD FORMATION
 PERFORATE NEW FORMATION OTHER PHYSICAL CHANGE IN WELL (SPECIFY) _____ BHL MOD _____ 6,925' TVD
 PLUG AND ABANDON CLEAN OUT AND REPLUG TARGET FORMATION: Marcellus Shale ESTIMATED DEPTH: 28,043' MD

WELL OPERATOR: HG Energy II Appalachia, LLC
ADDRESS: 5260 Dupont Road
Parkersburg, WV 26101

DESIGNATED AGENT: Diane C. White
ADDRESS: 5260 Dupont Road
Parkersburg, WV 26101

HG Energy II Appalachia, LLC
Well No. Flesher 1212 N-9H MOD

Page 1 of 3

8,373' to Top Hole

5,980' to Bottom Hole

TOP LATITUDE 39 - 07 - 30
BTM LATITUDE 39 - 12 - 30

TOP LONGITUDE 80 - 27 - 30
BTM LONGITUDE 80 - 30 - 00

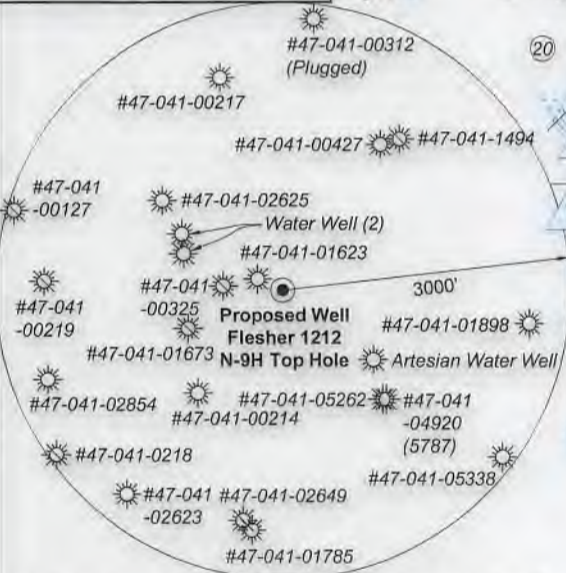
2,481' to Top Hole

14,854' to Bottom Hole



I, the undersigned, hereby certify that this plat is correct to the best of my knowledge and belief and shows all the information required by law and the rules issued and prescribed by the Department of Environmental Protection.

Kevin S. James
Kevin S. James, P.S. 2305



Note: 2 water wells and 1 artesian well was found within 1500' of proposed well. No occupied dwellings or buildings 2,500 square feet or larger used to house or shelter dairy cattle or poultry husbandry are located within 625' of the center of the well pad.

FILE NO: 156-36-12-U-F-19
DRAWING NO: Flesher 1212 N-9H Well Plat
SCALE: 1" = 2000'
MINIMUM DEGREE OF ACCURACY: Submeter
PROVEN SOURCE OF ELEVATION: CORS, Bridgeport, WV

STATE OF WEST VIRGINIA
DEPARTMENT OF ENVIRONMENTAL PROTECTION
OIL AND GAS DIVISION

DATE: April 1, 2021
OPERATOR'S WELL NO. Flesher 1212 N-9H
API WELL NO
47 - 041 - 05713
STATE COUNTY PERMIT

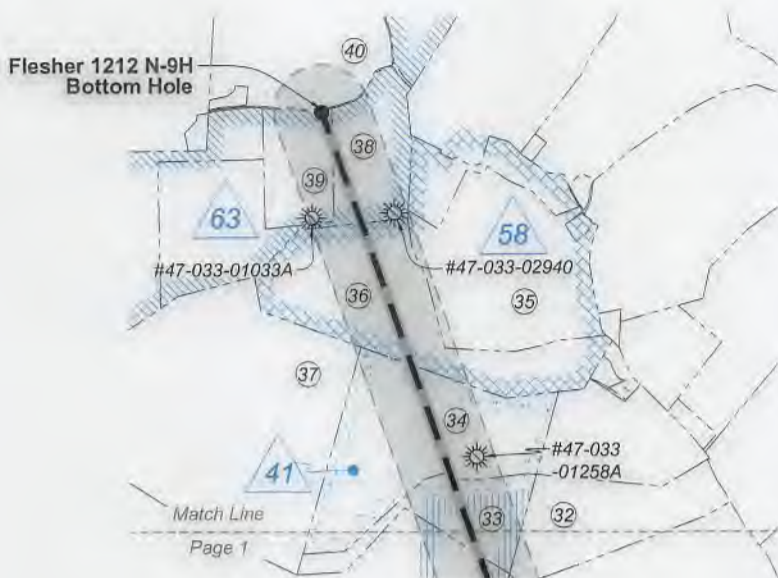
WELL TYPE: OIL GAS LIQUID INJECTION WASTE DISPOSAL
(IF GAS) PRODUCTION: STORAGE DEEP SHALLOW

LOCATION: ELEVATION: 1,332.2' WATERSHED: Middle West Fork Creek

QUADRANGLE: Top: Weston
Bottom: Big Isaac
COUNTY: Lewis
ACREAGE: 70.00

DISTRICT: Freemans Creek
SURFACE OWNER: H.G. Energy II Appalachia, LLC
ROYALTY OWNER: W.D. Hitt, et al, et al LEASE NO: ACREAGE: 210.00
PROPOSED WORK: DRILL CONVERT DRILL DEEPER FRACTURE OR STIMULATE PLUG OFF OLD FORMATION
 PERFORATE NEW FORMATION OTHER PHYSICAL CHANGE IN WELL (SPECIFY) BHL MOD
 PLUG AND ABANDON CLEAN OUT AND REPLUG TARGET FORMATION: Marcellus Shale ESTIMATED DEPTH: 28,043' MD
6,925' TVD

WELL OPERATOR: HG Energy II Appalachia, LLC DESIGNATED AGENT: Diane C. White
ADDRESS: 5260 Dupont Road ADDRESS: 5260 Dupont Road
Parkersburg, WV 26101 Parkersburg, WV 26101

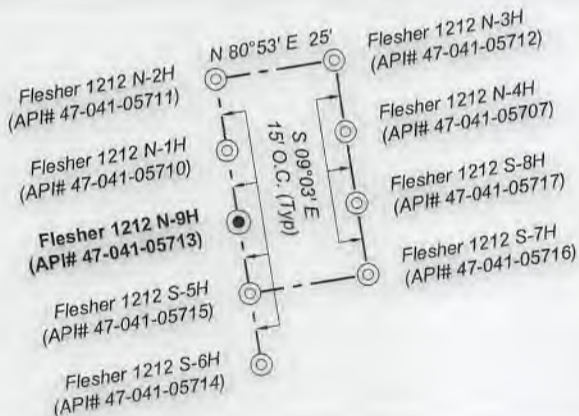


Notes: Well No. Flesher 1212 N-9H
West Virginia Coordinate System of 1927, North Zone based upon Differential GPS Measurements.
Top Hole coordinates Bottom Hole coordinates
Latitude: 39°07'05.47" Latitude: 39°10'03.13"
Longitude: 80°29'16.27" Longitude: 80°31'15.96"
UTM Zone 17, NAD 1983
Top Hole Coordinates Bottom Hole Coordinates
N: 4,330,027.145m N: 4,335,487.882m
E: 544,290.002m E: 541,386.768m
Plat orientation and corner and well references are based upon the grid north meridian. Well location references are based upon the magnetic meridian.

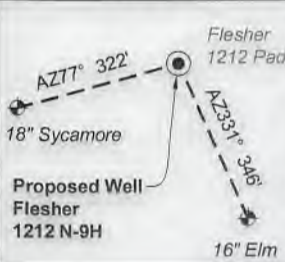
Notes:
Well No. Flesher 1212 N-9H
UTM NAD 1983 (USSF)
Top Hole Coordinates
N: 14,206,097.39'
E: 1,785,724.78'
Landing Point Coordinates
N: 14,205,519.13'
E: 1,782,734.84'
Bottom Hole Coordinates
N: 14,224,013.15'
E: 1,776,199.75'

Tag	Bearing	Dist.	Description
L1	N 43°11' W	1,539.9'	#47-041-05262
L2	N 22°20' E	663.6'	1/2" Rebar
L3	N 68°00' E	1,594.4'	1" Iron pipe
L4	S 34°14' E	2,006.4'	5/8" Rebar
L5	S 79°03' W	3,045.3'	Landing point

Wellhead Layout (NTS)



Well Location References
Not to Scale



Legend

- Proposed gas well
- Well Reference, as noted
- Monument, as noted
- Existing Well, as noted
- Digitized Well, as noted
- Creek or Drain
- Existing Road
- Surface boundary (approx.)
- Interior surface tracts (approx.)

FILE NO: 156-36-12-U-F-19
DRAWING NO: Flesher 1212 N-9H Well Plat
SCALE: 1" = 2000'
MINIMUM DEGREE OF ACCURACY:
Submeter
PROVEN SOURCE OF ELEVATION:
CORS, Bridgeport, WV

STATE OF WEST VIRGINIA
DEPARTMENT OF ENVIRONMENTAL PROTECTION
OIL AND GAS DIVISION

DATE: April 1 2021
OPERATOR'S WELL NO. Flesher 1212 N-9H
API WELL NO
47 - 041 - 05713
STATE COUNTY PERMIT

WELL TYPE: OIL GAS LIQUID INJECTION WASTE DISPOSAL
(IF GAS) PRODUCTION: STORAGE DEEP SHALLOW

LOCATION: ELEVATION: 1,332.2' WATERSHED: Middle West Fork Creek

QUADRANGLE: Btm: Big Isaac
Top: Weston

DISTRICT: Freemans Creek

COUNTY: Leads 05/14/2021

SURFACE OWNER: H.G. Energy II Appalachia, LLC

ACREAGE: 70.00

ROYALTY OWNER: W.D. Hitt, et al, et al

LEASE NO: _____ ACREAGE: 210.00

PROPOSED WORK: DRILL CONVERT DRILL DEEPER FRACTURE OR STIMULATE PLUG OFF OLD FORMATION
 PERFORATE NEW FORMATION OTHER PHYSICAL CHANGE IN WELL (SPECIFY) _____ BHL MOD _____

PLUG AND ABANDON CLEAN OUT AND REPLUG TARGET FORMATION: Marcellus Shale ESTIMATED DEPTH: 28,043' MD 6,925' TVD

WELL OPERATOR: HG Energy II Appalachia, LLC
ADDRESS: 5260 Dupont Road
Parkersburg, WV 26101

DESIGNATED AGENT: Diane C. White
ADDRESS: 5260 Dupont Road
Parkersburg, WV 26101



ID	Lease
18	A.H. Reed, et al
20	A.H. Reed, et al
22	Carrie Dillin, et al
25	Lizzie B. Conley
26	Alvadore Hughes, et al
29	W.W. Paugh, et al
30	W.H. Coffindaffer, et al
41	Betty A. Coffindaffer, et al
44	A.H. Reed, et al
45	Edwin Gaston, et al
52	W.D. Hitt, et al
54	Pearle A. Norris, et al
55	J.S. Norris, et al
58	J.S. Norris
58	Robert W. Coffindaffer, et al
63	E.J. Rightmire, et ux.

Detail 1 (Scale 1"=500')



Lewis Co. - Freeman Creek Dist.

No.	TM / Par	Owner	Bk / Pg	Ac.
1	6C / 47	HG Energy II Appalachia, LLC	753 / 453	70.00
2	6C / 43	Gary Allen Sias	646 / 688	50.59
3	6C / 25.1	William Radtka & Helen Burton	655 / 681	5.85
4	6C / 25	Robert M. Painter	629 / 411	27.48
5	6C / 23.2	Michael & Laura Phillips	661 / 298	21.32
6	6C / 21	Thomas R. Zinn, et al	445 / 493	166.25
7	6C / 23.4	Richard G. Hayhurst, et ux	565 / 326	4.13
8	6C / 23.10	Gary Farris	700 / 769	0.65
9	6C / 23.6	Gary Farris	700 / 769	2.02
10	6C / 23.1	Michael & Laura Phillips	661 / 298	0.16
11	6C / 23.9	Michael & Laura Phillips	661 / 298	0.25
12	6C / 22	Mann Family Trust	617 / 608	265.19
13	6C / 22.3	MannFarm, LLC	722 / 660	5.00
14	6C / 22.2	Stephen P. & Wendy T. Mann	718 / 175	5.97
15	6B / 12	Edward E. Garrett, et al	429 / 245	27.75
16	6B / 11	Edward E. Garrett, et al	429 / 245	30.00
17	6B / 13	Mann Family Trust	617 / 608	38.55
18	6B / 14	Edward E. Garrett, et al	429 / 245	30.00
19	6B / 16	Mann Family Trust	617 / 608	21.45
20	6B / 15	Edward E. Garrett, et al	429 / 245	30.75
21	6B / 18	Berlin Family Irrevocable Trust	743 / 893	100.00
22	6B / 19.1	Robert E. Brincefield, Jr. & Terri Lynne Trust, et al	578 / 630	52.00
23	6B / 21	Mark D. Roles	W50 / 769	195.91
24	6B / 3	Eric B. & Kathy A. Beevers	509 / 197	99.00

Harrison Co. - Union-Outside Dist.

No.	TM / Par	Owner	Bk / Pg	Ac.
25	442 / 12	Eric & Kathy Beevers	1237 / 941	30.00
26	442 / 14	Jackie & Barbara Caplinger	1416 / 1052	12.00
27	442 / 11	Douglas L. & Donna S. Nolan	1478 / 929	34.13
28	442 / 13.1	Virginia E. Grogg	1379 / 1109	15.20
29	442 / 13	Kimberly S. Shaw	1544 / 132	34.02
30	442 / 10	Mike Ross Inc., et al	1590 / 158	64.53
31	422 / 38	Jody B. Ross & Dawn R. Price	1283 / 546	36.77
32	422 / 37	Jody B. Ross & Dawn R. Price	1283 / 546	34.70
33	422 / 34.1	Mark J. Coffindaffer, et al	W160 / 415	24.07
34	422 / 34	Terry Bostardi, et al	1617 / 374	66.56
35	422 / 18	Stephen J. & Freda P. Perkins	1258 / 66	61.60
36	422 / 16	Terry Bostardi, et al	1617 / 374	62.61
37	422 / 33	Mark J. Coffindaffer, et al	W160 / 415	125.75
38	422 / 15.1	Stephen J. & Freda P. Perkins	1560 / 347	61.48
39	422 / 15	Betty Jo Keister	1560 / 399	20.01
40	422 / 5	William L. & Sandra L. Coffindaffer	1018 / 715	65.29

FILE NO: 156-36-12-U-F-19
DRAWING NO: Flesher 1212 N-9H Well Plat
SCALE: 1" = 2000'
MINIMUM DEGREE OF ACCURACY: Submeter
PROVEN SOURCE OF ELEVATION: CORS, Bridgeport, WV

STATE OF WEST VIRGINIA
DEPARTMENT OF ENVIRONMENTAL PROTECTION
OIL AND GAS DIVISION

DATE: April 1 2021
OPERATOR'S WELL NO. Flesher 1212 N-9H
API WELL NO
47 - 041 - 05713
STATE COUNTY PERMIT

WELL TYPE: OIL GAS LIQUID INJECTION WASTE DISPOSAL
(IF GAS) PRODUCTION: STORAGE DEEP SHALLOW

LOCATION: ELEVATION: 1,332.2' WATERSHED: Middle West Fork Creek

Btm: Big Isaac
Top: Weston
QUADRANGLE: 05/14/2021
COUNTY: LEWIS
ACREAGE: 70.00

DISTRICT: Freemans Creek
SURFACE OWNER: H.G. Energy II Appalachia, LLC

ROYALTY OWNER: W.D. Hitt, et al, et al

LEASE NO: _____ ACREAGE: 210.00

PROPOSED WORK: DRILL CONVERT DRILL DEEPER FRACTURE OR STIMULATE PLUG OFF OLD FORMATION
 PERFORATE NEW FORMATION OTHER PHYSICAL CHANGE IN WELL (SPECIFY) BHL MOD

PLUG AND ABANDON CLEAN OUT AND REPLUG TARGET FORMATION: Marcellus Shale ESTIMATED DEPTH: 6,925' TVD 28,043' MD

WELL OPERATOR: HG Energy II Appalachia, LLC
ADDRESS: 5260 Dupont Road
Parkersburg, WV 26101

DESIGNATED AGENT: Diane C. White
ADDRESS: 5260 Dupont Road
Parkersburg, WV 26101

WW-6A1
(5/13)

**INFORMATION SUPPLIED UNDER WEST VIRGINIA CODE
Chapter 22, Article 6A, Section 5(a)(5)
IN LIEU OF FILING LEASE(S) AND OTHER CONTINUING CONTRACT(S)**

Under the oath required to make the verification on page 1 of this Notice and Application, I depose and say that I am the person who signed the Notice and Application for the Applicant, and that –

- (1) the tract of land is the same tract described in this Application, partly or wholly depicted in the accompanying plat, and described in the Construction and Reclamation Plan;
- (2) the parties and recordation data (if recorded) for lease(s) or other continuing contract(s) by which the Applicant claims the right to extract, produce or market the oil or gas are as follows:

Lease Name or Number	Grantor, Lessor, etc.	Grantee, Lessee, etc.	Royalty	Book/Page
----------------------	-----------------------	-----------------------	---------	-----------

****See Attached Sheets****

**Acknowledgement of Possible Permitting/Approval
In Addition to the Office of Oil and Gas**

The permit applicant for the proposed well work addressed in this application hereby acknowledges the possibility of the need for permits and/or approvals from local, state, or federal entities in addition to the DEP, Office of Oil and Gas, including but not limited to the following:

- WV Division of Water and Waste Management
- WV Division of Natural Resources WV Division of Highways
- U.S. Army Corps of Engineers
- U.S. Fish and Wildlife Service
- County Floodplain Coordinator

The applicant further acknowledges that any Office of Oil and Gas permit in no way overrides, replaces, or nullifies the need for other permits/approvals that may be necessary and further affirms that all needed permits/approvals should be acquired from the appropriate authority before the affected activity is initiated.

Well Operator: HG Energy II Appalachia, LLC

By: Diane White Diane White

Its: Accountant

**RECEIVED
Office of Oil and Gas**

APR 12

**WV Department of
Environmental Protection**

RECEIVED
Office of Oil and Gas

APR 12

WV Department of
Environmental Protection

HG Energy II Appalachia, LLC 1212 N-9H Lease Chain

1212N Tract	LEGACY LEASE NUMBER	TAX MAP	LEASE NUMBER	GRANTOR/LESSOR	GRANTEE/LESSEE	ROYALTY	DEED BOOK	PAGE
52	FK053270	03-006C-0045-0000 03-006C-0046-0000 03-006C-0053-0000 03-006C-0054-0000 03-007C-0007-0000 p/o 03-006C-0043-0000 p/o 03-006C-0043-0001 p/o 03-006C-0047-0000	Q100675000	W. D. HITT AND ALDA HITT, HIS WIFE; J. C. HITT AND DORA HITT, HIS WIFE; L.A. MCCARTY AND F. R. MCCARTY, HER HUSBAND; GEORGE W. NEELY AND GRACE M. NEELY, HIS WIFE	RESERVE GAS COMPANY	NOT LESS THAN 1/8	68	524
				RESERVE GAS COMPANY	HOPE NATURAL GAS COMPANY	CONFIRMATORY DEED	155	202
				HOPE NATURAL GAS COMPANY	CONSOLIDATED GAS SUPPLY CORPORATION	CONFIRMATORY DEED	294	89
				CONSOLIDATED GAS SUPPLY CORPORATION	CONSOLIDATED GAS TRANSMISSION CORPORATION	ASSIGNMENT	425	127
				CONSOLIDATED GAS TRANSMISSION CORPORATION	CNG TRANSMISSION CORPORATION	MERGER/NAME CHANGE	WVSOS	
				CNG TRANSMISSION CORPORATION	DOMINION TRANSMISSION, INC.	MERGER/NAME CHANGE	WVSOS	
				DOMINION TRANSMISSION, INC.	CNX GAS COMPANY LLC	MEMORANDUM FARMOUT AGREEMENT	672	154
				CNX GAS COMPANY LLC	NOBLE ENERGY, INC.	LIMITED PARTIAL ASSIGNMENT (50%)	684	57
				DOMINION TRANSMISSION, INC.	CNX GAS COMPANY LLC AND NOBLE ENERGY, INC.	PARTIAL ASSIGNMENT (32%)	712	848
				CNX GAS COMPANY LLC	NOBLE ENERGY, INC.	ASSIGNMENT	717	1
				NOBLE ENERGY, INC.	HG ENERGY II APPALACHIA, LLC	ASSIGNMENT	722	139
				DOMINION TRANSMISSION, INC.	DOMINION ENERGY TRANSMISSION, INC.	MERGER/NAME CHANGE	WVSOS	
				DOMINION ENERGY TRANSMISSION, INC.	HG ENERGY II APPALACHIA, LLC	SECOND AMENDMENT TO MEMORANDUM OF FARMOUT AGREEMENT	723	499
				DOMINION ENERGY TRANSMISSION, INC.	HG ENERGY II APPALACHIA, LLC	THIRD AMENDMENT TO MEMORANDUM OF FARMOUT AGREEMENT	734	558
				DOMINION ENERGY TRANSMISSION, INC.	HG ENERGY II APPALACHIA, LLC	ASSIGNMENT (68%)	736	220
				54	FK064074	03-006C-0025-0000 03-006C-0025-0001 p/o 03-006C-0023-0000 p/o 03-006C-0043-0000	Q100293000	PEARLE A. NORRIS AND EDNA N. PAUGH AND CHAS. S. PAUGH, HER HUSBAND
HOPE NATURAL GAS COMPANY	CONSOLIDATED GAS SUPPLY CORPORATION	CONFIRMATORY DEED	294					89
CONSOLIDATED GAS SUPPLY CORPORATION	CONSOLIDATED GAS TRANSMISSION CORPORATION	ASSIGNMENT	425					127
CONSOLIDATED GAS TRANSMISSION CORPORATION	CNG TRANSMISSION CORPORATION	MERGER/NAME CHANGE	WVSOS					
CNG TRANSMISSION CORPORATION	DOMINION TRANSMISSION, INC.	MERGER/NAME CHANGE	WVSOS					
DOMINION TRANSMISSION, INC.	CNX GAS COMPANY LLC	MEMORANDUM OF FARMOUT AGREEMENT	672					154
DOMINION TRANSMISSION, INC.	CNX GAS COMPANY LLC	POWER OF ATTORNEY	21					81
CNX GAS COMPANY LLC	NOBLE ENERGY, INC.	LIMITED PARTIAL ASSIGNMENT (50%)	684					57
DOMINION TRANSMISSION, INC.	CNX GAS COMPANY LLC AND NOBLE ENERGY, INC.	PARTIAL ASSIGNMENT (32%)	712					848
CNX GAS COMPANY LLC	NOBLE ENERGY, INC.	ASSIGNMENT	717					1
NOBLE ENERGY, INC.	HG ENERGY II APPALACHIA, LLC	ASSIGNMENT	722					139
NOBLE ENERGY, INC.	HG ENERGY II APPALACHIA, LLC	ASSIGNMENT	722					170
DOMINION TRANSMISSION, INC.	DOMINION ENERGY TRANSMISSION, INC.	MERGER/NAME CHANGE	WVSOS					
DOMINION ENERGY TRANSMISSION, INC.	HG ENERGY II APPALACHIA, LLC	SECOND AMENDMENT TO MEMORANDUM OF FARMOUT AGREEMENT	723					499
DOMINION ENERGY TRANSMISSION, INC.	HG ENERGY II APPALACHIA, LLC	THIRD AMENDMENT TO MEMORANDUM OF FARMOUT AGREEMENT	734					558
DOMINION ENERGY TRANSMISSION, INC.	HG ENERGY II APPALACHIA, LLC	ASSIGNMENT (68%)	736					220
55	FK053181	03-006C-0023-0000 03-006C-0023-0001 03-006C-0023-0002 03-006C-0023-0003 03-006C-0023-0004 03-006C-0023-0005 03-006C-0023-0006 03-006C-0023-0007	Q101024000	J. S. NORRIS AND GEO. NORRIS AND L. N. NORRIS, HIS WIFE	SOUTH PENN OIL COMPANY	NOT LESS THAN 1/8	42	122
				SOUTH PENN OIL COMPANY	HOPE NATURAL GAS COMPANY	ASSIGNMENT	85	127
				HOPE NATURAL GAS COMPANY	RESERVE GAS COMPANY	ASSIGNMENT	79	370
				SOUTH PENN OIL COMPANY	RESERVE GAS COMPANY	ASSIGNMENT	79	237
				RESERVE GAS COMPANY	HOPE NATURAL GAS COMPANY	CONFIRMATORY DEED	155	202
				HOPE NATURAL GAS COMPANY	CONSOLIDATED GAS SUPPLY CORPORATION	CONFIRMATORY DEED	294	89
				CONSOLIDATED GAS SUPPLY CORPORATION	CONSOLIDATED GAS TRANSMISSION CORPORATION	ASSIGNMENT	425	127
				CONSOLIDATED GAS TRANSMISSION CORPORATION	CNG TRANSMISSION CORPORATION	MERGER/NAME CHANGE	WVSOS	
				CNG TRANSMISSION CORPORATION	DOMINION TRANSMISSION, INC.	MERGER/NAME CHANGE	WVSOS	
				DOMINION TRANSMISSION, INC.	CNX GAS COMPANY LLC	MEMORANDUM OF FARMOUT AGREEMENT	672	154
				DOMINION TRANSMISSION, INC.	CNX GAS COMPANY LLC	POWER OF ATTORNEY	21	81
				CNX GAS COMPANY LLC	NOBLE ENERGY, INC.	LIMITED PARTIAL ASSIGNMENT (50%)	684	57
				DOMINION TRANSMISSION, INC.	CNX GAS COMPANY LLC AND NOBLE ENERGY, INC.	PARTIAL ASSIGNMENT (32%)	712	848

4704105713

4704105713

RECEIVED
Office of Oil and Gas
APR 12
WV Department of
Environmental Protection

		03-006C-0023-0008 03-006C-0023-0009 03-006C-0023-0010 03-006C-0021-0000		CNX GAS COMPANY LLC NOBLE ENERGY, INC. NOBLE ENERGY, INC. DOMINION TRANSMISSION, INC. DOMINION ENERGY TRANSMISSION, INC. DOMINION ENERGY TRANSMISSION, INC. DOMINION ENERGY TRANSMISSION, INC.	NOBLE ENERGY, INC. HG ENERGY II APPALACHIA, LLC HG ENERGY II APPALACHIA, LLC DOMINION ENERGY TRANSMISSION, INC. HG ENERGY II APPALACHIA, LLC HG ENERGY II APPALACHIA, LLC HG ENERGY II APPALACHIA, LLC	ASSIGNMENT ASSIGNMENT ASSIGNMENT MERGER/NAME CHANGE SECOND AMENDMENT TO MEMORANDUM OF FARMOUT AGREEMENT THIRD AMENDMENT TO MEMORANDUM OF FARMOUT AGREEMENT ASSIGNMENT (68%)	717 722 722 WVSOS 723 734 736	1 139 170 WVSOS 499 558 220
56	FK053129	03-006C-0021-0000 03-006C-0002-0000 03-006C-0019-0000	Q100767000 053435	J. S. NORRIS SOUTH PENN OIL COMPANY HOPE NATURAL GAS COMPANY RESERVE GAS COMPANY HOPE NATURAL GAS COMPANY CONSOLIDATED GAS SUPPLY CORPORATION CONSOLIDATED GAS TRANSMISSION CORPORATION CNG TRANSMISSION CORPORATION DOMINION TRANSMISSION, INC. CNX GAS COMPANY LLC DOMINION TRANSMISSION, INC. CNX GAS COMPANY LLC NOBLE ENERGY, INC. NOBLE ENERGY, INC. NOBLE ENERGY, INC. DOMINION TRANSMISSION, INC. DOMINION ENERGY TRANSMISSION, INC. DOMINION ENERGY TRANSMISSION, INC. DOMINION ENERGY TRANSMISSION, INC.	SOUTH PENN OIL COMPANY HOPE NATURAL GAS COMPANY RESERVE GAS COMPANY HOPE NATURAL GAS COMPANY CONSOLIDATED GAS SUPPLY CORPORATION CONSOLIDATED GAS TRANSMISSION CORPORATION CNG TRANSMISSION CORPORATION DOMINION TRANSMISSION, INC. CNX GAS COMPANY LLC NOBLE ENERGY, INC. CNX GAS COMPANY LLC AND NOBLE ENERGY, INC. NOBLE ENERGY, INC. HG ENERGY II APPALACHIA, LLC HG ENERGY II APPALACHIA, LLC DOMINION ENERGY TRANSMISSION, INC. HG ENERGY II APPALACHIA, LLC HG ENERGY II APPALACHIA, LLC	NOT LESS THAN 1/8 ASSIGNMENT ASSIGNMENT CONFIRMATORY DEED CONFIRMATORY DEED ASSIGNMENT MERGER/NAME CHANGE MERGER/NAME CHANGE MEMORANDUM OF FARMOUT AGREEMENT LIMITED PARTIAL ASSIGNMENT (50%) PARTIAL ASSIGNMENT (32%) ASSIGNMENT ASSIGNMENT ASSIGNMENT MERGER/NAME CHANGE SECOND AMENDMENT TO MEMORANDUM OF FARMOUT AGREEMENT THIRD AMENDMENT TO MEMORANDUM OF FARMOUT AGREEMENT ASSIGNMENT (68%)	42 85 79 155 294 425 WVSOS WVSOS 672 684 712 717 722 722 WVSOS 723 734 736	121 122 370 202 89 127 WVSOS WVSOS 154 57 848 1 139 170 WVSOS 499 558 220
45	FK053267	Mapped as 03-006B-0029-0000 03-006B-0048-0000 03-006C-0022-0000 Assessed as 03-006C-0022-0000 03-006C-0022-0001 03-006C-0058-0000 03-006C-0061-0000	Q100387000 FEEHGII0066	EDWIN GASTON AND LAURA L. GASTON, HUSBAND; CLARK GASTON AND IDA GASTON, HIS WIFE; W. GASTON AND SUSAN GASTON, HIS WIFE; I. V. GASTON RESERVE GAS COMPANY HOPE NATURAL GAS COMPANY HOPE NATURAL GAS COMPANY CONSOLIDATED GAS SUPPLY CORPORATION CONSOLIDATED GAS TRANSMISSION CORPORATION CNG TRANSMISSION CORPORATION DOMINION TRANSMISSION, INC. CNX GAS COMPANY LLC DOMINION TRANSMISSION, INC. CNX GAS COMPANY LLC NOBLE ENERGY, INC. NOBLE ENERGY, INC. NOBLE ENERGY, INC. DOMINION TRANSMISSION, INC. DOMINION ENERGY TRANSMISSION, INC. DOMINION ENERGY TRANSMISSION, INC. DOMINION ENERGY TRANSMISSION, INC.	RESERVE GAS COMPANY HOPE NATURAL GAS COMPANY CONSOLIDATED GAS SUPPLY CORPORATION CONSOLIDATED GAS TRANSMISSION CORPORATION CNG TRANSMISSION CORPORATION DOMINION TRANSMISSION, INC. CNX GAS COMPANY LLC CNX GAS COMPANY LLC AND NOBLE ENERGY, INC. NOBLE ENERGY, INC. HG ENERGY II APPALACHIA, LLC HG ENERGY II APPALACHIA, LLC DOMINION ENERGY TRANSMISSION, INC. HG ENERGY II APPALACHIA, LLC HG ENERGY II APPALACHIA, LLC	NOT LESS THAN 1/8 ASSIGNMENT CONFIRMATORY DEED CONFIRMATORY DEED ASSIGNMENT MERGER/NAME CHANGE MERGER/NAME CHANGE MEMORANDUM OF FARMOUT AGREEMENT LIMITED PARTIAL ASSIGNMENT (50%) PARTIAL ASSIGNMENT (32%) ASSIGNMENT ASSIGNMENT ASSIGNMENT MERGER/NAME CHANGE SECOND AMENDMENT TO MEMORANDUM OF FARMOUT AGREEMENT THIRD AMENDMENT TO MEMORANDUM OF FARMOUT AGREEMENT ASSIGNMENT (68%)	71 155 294 425 WVSOS WVSOS 672 684 712 717 722 722 WVSOS 723 734 736	318 202 89 127 WVSOS WVSOS 154 57 848 1 139 170 WVSOS 499 558 220
44				A. H. REED, WIDOWER; BERTIE R. FLETCHER AND RALPH FLETCHER, HER HUSBAND; MADGE R. BARBE AND WEAVER BARBE, HER HUSBAND; AND H. MAY TAYLOR HOPE NATURAL GAS COMPANY CONSOLIDATED GAS SUPPLY CORPORATION CONSOLIDATED GAS TRANSMISSION CORPORATION CNG TRANSMISSION CORPORATION DOMINION TRANSMISSION, INC. DOMINION TRANSMISSION, INC.	HOPE NATURAL GAS COMPANY CONSOLIDATED GAS SUPPLY CORPORATION CONSOLIDATED GAS TRANSMISSION CORPORATION CNG TRANSMISSION CORPORATION DOMINION TRANSMISSION, INC. CNX GAS COMPANY LLC CNX GAS COMPANY LLC	NOT LESS THAN 1/8 CONFIRMATORY DEED ASSIGNMENT MERGER/NAME CHANGE MERGER/NAME CHANGE MEMORANDUM OF FARMOUT AGREEMENT POWER OF ATTORNEY	215 294 425 WVSOS WVSOS 672 21	247 89 127 WVSOS WVSOS 154 81

4704105713

44	FK062736 FK108075	03-006B-0012-0000 p/o 03-006B-0013-0000	Q100788000	CNX GAS COMPANY LLC	NOBLE ENERGY, INC.	LIMITED PARTIAL ASSIGNMENT (50%)	684	57
				DOMINION TRANSMISSION, INC.	CNX GAS COMPANY LLC AND NOBLE ENERGY, INC.	PARTIAL ASSIGNMENT (32%)	712	848
				CNX GAS COMPANY LLC	NOBLE ENERGY, INC.	ASSIGNMENT	717	1
				NOBLE ENERGY, INC.	HG ENERGY II APPALACHIA, LLC	ASSIGNMENT	722	139
				NOBLE ENERGY, INC.	HG ENERGY II APPALACHIA, LLC	ASSIGNMENT	722	170
				DOMINION TRANSMISSION, INC.	DOMINION ENERGY TRANSMISSION, INC.	MERGER/NAME CHANGE	WVSOS	
				DOMINION ENERGY TRANSMISSION, INC.	HG ENERGY II APPALACHIA, LLC	SECOND AMENDMENT TO MEMORANDUM OF FARMOUT AGREEMENT	723	499
				DOMINION ENERGY TRANSMISSION, INC.	HG ENERGY II APPALACHIA, LLC	THIRD AMENDMENT TO MEMORANDUM OF FARMOUT AGREEMENT	734	558
				DOMINION ENERGY TRANSMISSION, INC.	HG ENERGY II APPALACHIA, LLC	ASSIGNMENT (68%)	736	220
				18	FK062735 FK062961	03-006B-0011-0000 p/o 03-006B-0013-0000	Q100942000 Q100693000	A. H. REED, WIDOWER; BERTIE R. FLETCHER AND RALPH FLETCHER, HER HUSBAND; MADGE R. BARBE AND WEAVER BARBE, HER HUSBAND; AND H. MAY TAYLOR
CHARLES M. GARRETT AND DELPHIA GARRETT, HIS WIFE	HOPE NATURAL GAS COMPANY	NOT LESS THAN 1/8	216					326
HOPE NATURAL GAS COMPANY	CONSOLIDATED GAS SUPPLY CORPORATION	CONFIRMATORY DEED	294					89
CONSOLIDATED GAS SUPPLY CORPORATION	CONSOLIDATED GAS TRANSMISSION CORPORATION	ASSIGNMENT	425					127
CONSOLIDATED GAS TRANSMISSION CORPORATION	CNG TRANSMISSION CORPORATION	MERGER/NAME CHANGE	WVSOS					
CNG TRANSMISSION CORPORATION	DOMINION TRANSMISSION, INC.	MERGER/NAME CHANGE	WVSOS					
DOMINION TRANSMISSION, INC.	CNX GAS COMPANY LLC	MEMORANDUM OF FARMOUT AGREEMENT	672					154
DOMINION TRANSMISSION, INC.	CNX GAS COMPANY LLC	POWER OF ATTORNEY	21					81
CNX GAS COMPANY LLC	NOBLE ENERGY, INC.	LIMITED PARTIAL ASSIGNMENT (50%)	684					57
DOMINION TRANSMISSION, INC.	CNX GAS COMPANY LLC AND NOBLE ENERGY, INC.	PARTIAL ASSIGNMENT (32%)	712					848
CNX GAS COMPANY LLC	NOBLE ENERGY, INC.	ASSIGNMENT	717					1
NOBLE ENERGY, INC.	HG ENERGY II APPALACHIA, LLC	ASSIGNMENT	722					139
NOBLE ENERGY, INC.	HG ENERGY II APPALACHIA, LLC	ASSIGNMENT	722					170
DOMINION TRANSMISSION, INC.	DOMINION ENERGY TRANSMISSION, INC.	MERGER/NAME CHANGE	WVSOS					
DOMINION ENERGY TRANSMISSION, INC.	HG ENERGY II APPALACHIA, LLC	SECOND AMENDMENT TO MEMORANDUM OF FARMOUT AGREEMENT	723					499
DOMINION ENERGY TRANSMISSION, INC.	HG ENERGY II APPALACHIA, LLC	THIRD AMENDMENT TO MEMORANDUM OF FARMOUT AGREEMENT	734					558
DOMINION ENERGY TRANSMISSION, INC.	HG ENERGY II APPALACHIA, LLC	ASSIGNMENT (68%)	736					220
20	FK062734 FK108073	03-006B-0014-0000 p/o 03-006B-0013-0000 p/o 03-006B-0016-0000	Q100940000					A. H. REED, WIDOWER; BERTIE R. FLETCHER AND RALPH FLETCHER, HER HUSBAND; MADGE R. BARBE AND WEAVER BARBE, HER HUSBAND
				HOPE NATURAL GAS COMPANY	CONSOLIDATED GAS SUPPLY CORPORATION	CONFIRMATORY DEED	294	89
				CONSOLIDATED GAS SUPPLY CORPORATION	CONSOLIDATED GAS TRANSMISSION CORPORATION	ASSIGNMENT	425	127
				CONSOLIDATED GAS TRANSMISSION CORPORATION	CNG TRANSMISSION CORPORATION	MERGER/NAME CHANGE	WVSOS	
				CNG TRANSMISSION CORPORATION	DOMINION TRANSMISSION, INC.	MERGER/NAME CHANGE	WVSOS	
				DOMINION TRANSMISSION, INC.	CNX GAS COMPANY LLC	MEMORANDUM OF FARMOUT AGREEMENT	672	154
				DOMINION TRANSMISSION, INC.	CNX GAS COMPANY LLC	POWER OF ATTORNEY	21	81
				CNX GAS COMPANY LLC	NOBLE ENERGY, INC.	LIMITED PARTIAL ASSIGNMENT (50%)	684	57
				DOMINION TRANSMISSION, INC.	CNX GAS COMPANY LLC AND NOBLE ENERGY, INC.	PARTIAL ASSIGNMENT (32%)	712	848
				CNX GAS COMPANY LLC	NOBLE ENERGY, INC.	ASSIGNMENT	717	1
				NOBLE ENERGY, INC.	HG ENERGY II APPALACHIA, LLC	ASSIGNMENT	722	139
				NOBLE ENERGY, INC.	HG ENERGY II APPALACHIA, LLC	ASSIGNMENT	722	170
				DOMINION TRANSMISSION, INC.	DOMINION ENERGY TRANSMISSION, INC.	MERGER/NAME CHANGE	WVSOS	
				DOMINION ENERGY TRANSMISSION, INC.	HG ENERGY II APPALACHIA, LLC	SECOND AMENDMENT TO MEMORANDUM OF FARMOUT AGREEMENT	723	499
DOMINION ENERGY TRANSMISSION, INC.	HG ENERGY II APPALACHIA, LLC	THIRD AMENDMENT TO MEMORANDUM OF FARMOUT AGREEMENT	734	558				
DOMINION ENERGY TRANSMISSION, INC.	HG ENERGY II APPALACHIA, LLC	ASSIGNMENT (68%)	736	220				
22				CARRIE DILLIN, SINGLE; HARVEY DILLON, ATTORNEY-IN-FACT FOR: HAROLD DILLON, EDNA C. DILLON, HERBERT DILLON AND JANICE DILLON, HIS WIFE; HELEN DILLON BROWN AND CHARLES BROWN, HER HUSBAND; GLORIA DILLON, WIFE OF HARVEY DILLON	W. B. BERRY	NOT LESS THAN 1/8	386	369
				W. B. BERRY	BERRY ENERGY CONSULTANTS & MANAGERS, INC.	ASSIGNMENT	398	561

RECEIVED
Office of Oil and Gas
APR 12
WV Department of
Environmental Protection

4704105713

22	FK065437	03-006B-0018-0000 03-006B-0015-0000 p/o 03-006B-0016-0000	Q102365000	BERRY ENERGY CONSULTANTS & MANAGERS, INC.	J & J ENTERPRISES, INC	ASSIGNMENT	688	669
				J & J ENTERPRISES, INC	EASTERN AMERICAN ENERGY CORPORATION	CONFIRMATORY DEED	479	154
				EASTERN AMERICAN ENERGY CORPORATION	ENERGY CORPORATION OF AMERICA	CONFIRMATORY DEED	641	184
				ENERGY CORPORATION OF AMERICA	CNX GAS COMPANY LLC	PARTIAL ASSIGNMENT	697	320
				CNX GAS COMPANY LLC	NOBLE ENERGY, INC.	ASSIGNMENT	717	1
				NOBLE ENERGY, INC.	HG ENERGY II APPALACHIA, LLC	ASSIGNMENT	722	139
				CNX GAS COMPANY LLC	NOBLE ENERGY, INC.	CORRECTIVE ASSIGNMENT	725	784
				HOPE NATURAL GAS COMPANY	CONSOLIDATED GAS SUPPLY CORPORATION	CONFIRMATORY DEED	294	89
				CONSOLIDATED GAS SUPPLY CORPORATION	CNG TRANSMISSION CORPORATION	MERGER/NAME CHANGE		WVSOS
				CNG TRANSMISSION CORPORATION	DOMINION TRANSMISSION, INC.	MERGER/NAME CHANGE		WVSOS
				DOMINION TRANSMISSION, INC.	CNX GAS COMPANY LLC	MEMORANDUM OF FARMOUT AGREEMENT	672	154
				CNX GAS COMPANY LLC	NOBLE ENERGY, INC.	PARTIAL LIMITED ASSIGNMENT (50%)	684	57
				DOMINION TRANSMISSION, INC.	DOMINION ENERGY TRANSMISSION, INC.	MERGER/NAME CHANGE		WVSOS
				DOMINION ENERGY TRANSMISSION, INC.	HG ENERGY II APPALACHIA, LLC	SECOND AMENDMENT TO MEMORANDUM OF FARMOUT AGREEMENT	723	499
DOMINION ENERGY TRANSMISSION, INC.	HG ENERGY II APPALACHIA, LLC	THIRD AMENDMENT TO MEMORANDUM OF FARMOUT AGREEMENT	734	558				
26	FK064222	03-006B-0019-0001 03-006B-0020-0001 p/o 03-006B-0021-0000	Q101054000	ALVADOR HUGHES, WIDOWER; MARIE HUGHES, WIFE OF PAUL HUGHES; ICIE L. LAW, WIDOW; PAUL HUGHES, A MARRIED MAN; ALDA DAVIS. WIDOW; ALDA DAVIS, ATTORNEY-IN-FACT FOR LAWRENCE A. HUGHES; LAWRENCE A. HUGHES AND GLENNA F. HUGHES, HIS WIFE; AND HENRIETTA HUGHES, WIDOW	HOPE NATURAL GAS COMPANY	NOT LESS THAN 1/8	220	346
				HOPE NATURAL GAS COMPANY	CONSOLIDATED GAS SUPPLY CORPORATION	CONFIRMATORY DEED	294	89
				CONSOLIDATED GAS SUPPLY CORPORATION	CONSOLIDATED GAS TRANSMISSION CORPORATION	ASSIGNMENT	425	127
				CONSOLIDATED GAS TRANSMISSION CORPORATION	CNG TRANSMISSION CORPORATION	MERGER/NAME CHANGE		WVSOS
				CNG TRANSMISSION CORPORATION	DOMINION TRANSMISSION, INC.	MERGER/NAME CHANGE		WVSOS
				DOMINION TRANSMISSION, INC.	CNX GAS COMPANY LLC	MEMORANDUM OF FARMOUT AGREEMENT	672	154
				CNX GAS COMPANY LLC	NOBLE ENERGY, INC.	LIMITED PARTIAL ASSIGNMENT (50%)		
				DOMINION TRANSMISSION, INC.	CNX GAS COMPANY LLC AND NOBLE ENERGY, INC.	PARTIAL ASSIGNMENT (32%)	712	848
				CNX GAS COMPANY LLC	NOBLE ENERGY, INC.	ASSIGNMENT	717	1
				NOBLE ENERGY, INC.	HG ENERGY II APPALACHIA, LLC	ASSIGNMENT	722	139
				DOMINION TRANSMISSION, INC.	DOMINION ENERGY TRANSMISSION, INC.	MERGER/NAME CHANGE		WVSOS
				DOMINION ENERGY TRANSMISSION, INC.	HG ENERGY II APPALACHIA, LLC	SECOND AMENDMENT TO MEMORANDUM OF FARMOUT AGREEMENT	723	499
				DOMINION ENERGY TRANSMISSION, INC.	HG ENERGY II APPALACHIA, LLC	THIRD AMENDMENT TO MEMORANDUM OF FARMOUT AGREEMENT	734	558
				DOMINION ENERGY TRANSMISSION, INC.	HG ENERGY II APPALACHIA, LLC	ASSIGNMENT (68%)	736	220
30	FK065365	20-0442-0012-0000 p/o 20-0442-0012-0001 03-006B-0003-0000 03-006B-0004-0000	Q100604000	W. H. COFFINDAFFER AND MAXIE COFFINDAFFER, HIS WIFE; C. CLYDE COFFINDAFFER AND HAZEL COFFINDAFFER, HIS WIFE; R. S. COFFINDAFFER AND BEULAH B. COFFINDAFFER, HIS WIFE; ELVA CURREY AND H. T. CURREY, HER HUSBAND; BERTHA COFFINDAFFER, WIDOW; C. Z. COFFINDAFFER AND PAULINE E. COFFINDAFFER, HIS WIFE; WINNIE WILLIAMS AND L. T. WILLIAMS, HER HUSBAND; J.G. TIMBERLAKE, TRUSTER OFFICER, THE UNION NATIONAL BANK OF CLARKSBURG, GUARDIAN FOR JAMES R. RODGERS, A MINER; MARY LEE GIBSON AND CRAMER m. GIBSON, HER HUSBAND; TAYLOR COFFINDAFFER AND VIRGINIA B. COFFINDAFFER, HIS WIFE; MARY H. COFFINDAFFER, WIDOW; AND E. WAYNE COFFINDAFFER AND LAURA R. COFFINDAFFER, HIS WIFE	HOPE NATURAL GAS COMPANY	NOT LESS THAN 1/8	HARRISON 743 LEWIS 229	273 439
				HOPE NATURAL GAS COMPANY	CONSOLIDATED GAS SUPPLY CORPORATION	CONFIRMATORY DEED	HARRISON 903 LEWIS 294	179 89
				CONSOLIDATED GAS SUPPLY CORPORATION	CONSOLIDATED GAS TRANSMISSION CORPORATION	ASSIGNMENT	HARRISON 1136 LEWIS 425	250 127
				CONSOLIDATED GAS TRANSMISSION CORPORATION	CNG TRANSMISSION CORPORATION	MERGER/NAME CHANGE		51 795
				CNG TRANSMISSION CORPORATION	DOMINION TRANSMISSION, INC.	MERGER/NAME CHANGE		58 362
				DOMINION TRANSMISSION, INC.	CNX GAS COMPANY LLC	MEMORANDUM OF FARMOUT AGREEMENT	HARRISON 1522 LEWIS 672	33 154

4704105713

30

				CNX GAS COMPANY LLC	NOBLE ENERGY, INC.	LIMITED PARTIAL ASSIGNMENT (50%)	HARRISON 1543	1235
				DOMINION TRANSMISSION, INC.	CNX GAS COMPANY LLC AND NOBLE ENERGY	PARTIAL ASSIGNMENT (32%)	LEWIS 684	57
				CNX GAS COMPANY LLC	NOBLE ENERGY, INC.	ASSIGNMENT	1576	125
				NOBLE ENERGY, INC.	HG ENERGY II APPALACHIA, LLC	ASSIGNMENT	1584	942
				DOMINION TRANSMISSION, INC.	DOMINION ENERGY TRANSMISSION, INC.	MERGER/NAME CHANGE	1600	660
							WVSOS	
				DOMINION ENERGY TRANSMISSION, INC.	HG ENERGY II APPALACHIA, LLC	SECOND AMENDMENT TO MEMORANDUM OF FARMOUT AGREEMENT	HARRISON 1601	581
							LEWIS 723	499
				DOMINION ENERGY TRANSMISSION, INC.	HG ENERGY II APPALACHIA, LLC	THIRD AMENDMENT TO MEMORANDUM OF FARMOUT AGREEMENT	HARRISON 1621	962
				DOMINION ENERGY TRANSMISSION, INC.	HG ENERGY II APPALACHIA, LLC	ASSIGNMENT (68%)	LEWIS 734	558
							736	220
				LIZZIE B. CONLEY	HOPE NATURAL GAS COMPANY	NOT LESS THAN 1/8	740	39
				HOPE NATURAL GAS COMPANY	CONSOLIDATED GAS SUPPLY CORPORATION	CONFIRMATORY DEED	294	89
				CONSOLIDATED GAS SUPPLY CORPORATION	CONSOLIDATED GAS TRANSMISSION CORPORATION	ASSIGNMENT	1136	250
				CONSOLIDATED GAS TRANSMISSION CORPORATION	CNG TRANSMISSION CORPORATION	MERGER/NAME CHANGE	51	795
				CNG TRANSMISSION CORPORATION	DOMINION TRANSMISSION, INC.	MERGER/NAME CHANGE	58	362
				DOMINION TRANSMISSION, INC.	CNX GAS COMPANY LLC	MEMORANDUM OF FARMOUT AGREEMENT	1522	33
				DOMINION TRANSMISSION, INC.	CNX GAS COMPANY LLC	FIRST AMENDMENT OF FARMOUT AGREEMENT	1524	491
				CNX GAS COMPANY LLC	NOBLE ENERGY, INC.	LIMITED PARTIAL ASSIGNMENT (50%)	1543	1235
				DOMINION TRANSMISSION, INC.	CNX GAS COMPANY LLC AND NOBLE ENERGY, INC.	PARTIAL ASSIGNMENT (32%)	1576	125
				CNX GAS COMPANY LLC	NOBLE ENERGY, INC.	ASSIGNMENT	1584	942
				NOBLE ENERGY, INC.	HG ENERGY II APPALACHIA, LLC	ASSIGNMENT	1600	660
				DOMINION TRANSMISSION, INC.	DOMINION ENERGY TRANSMISSION, INC.	MERGER/NAME CHANGE	WVSOS	
				DOMINION TRANSMISSION, INC.	HG ENERGY II APPALACHIA, LLC	SECOND AMENDMENT TO MEMORANDUM OF FARMOUT AGREEMENT	1601	581
				DOMINION TRANSMISSION, INC.	HG ENERGY II APPALACHIA, LLC	THIRD AMENDMENT TO MEMORANDUM OF FARMOUT AGREEMENT	1621	1295
				DOMINION ENERGY TRANSMISSION, INC.	HG ENERGY II APPALACHIA, LLC	ASSIGNMENT (68%)	736	220
25	FK065215	20-0442-0011-0000	Q100601000	W.W. PAUGH AND VIRGINIA S. PAUGH, HIS WIFE	HOPE NATURAL GAS COMPANY	NOT LESS THAN 1/8	740	34
				HOPE NATURAL GAS COMPANY	CONSOLIDATED GAS SUPPLY CORPORATION	CONFIRMATORY DEED	903	179
				CONSOLIDATED GAS SUPPLY CORPORATION	CONSOLIDATED GAS TRANSMISSION CORPORATION	ASSIGNMENT	1136	250
				CONSOLIDATED GAS TRANSMISSION CORPORATION	CNG TRANSMISSION CORPORATION	MERGER/NAME CHANGE	51	795
				CNG TRANSMISSION CORPORATION	DOMINION TRANSMISSION, INC.	MERGER/NAME CHANGE	58	362
				DOMINION TRANSMISSION, INC.	CNX GAS COMPANY LLC	MEMORANDUM OF FARMOUT AGREEMENT	1522	33
				DOMINON TRANSMISSION, INC.	CNX GAS COMPANY LLC	FIRST AMENDMENT OF FARMOUT AGREEMENT	1524	491
				CNX GAS COMPANY LLC	NOBLE ENERGY, INC.	LIMITED PARTIAL ASSIGNMENT (50%)	1543	1235
				DOMINION TRANSMISSION, INC.	CNX GAS COMPANY LLC NOBLE ENERGY, INC.	PARTIAL ASSIGNMENT (32%)	1576	125
				CNX GAS COMPANY LLC	NOBLE ENERGY, INC.	ASSIGNMENT	1584	942
				NOBLE ENERGY, INC.	HG ENERGY II APPALACHIA, LLC	ASSIGNMENT	1600	692
				DOMINION TRANSMISSION, INC.	DOMINION ENERGY TRANSMISSION, INC.	MERGER/NAME CHANGE	WVSOS	
				DOMINION ENERGY TRANSMISSION, INC.	HG ENERGY II APPALACHIA, LLC	SECOND AMENDMENT TO MEMORANDUM OF FARMOUT AGREEMENT	1601	581
				DOMINION ENERGY TRANSMISSION, INC.	HG ENERGY II APPALACHIA, LLC	THIRD AMENDMENT TO MEMORANDUM OF FARMOUT AGREEMENT	1621	1295
				DOMINION ENERGY TRANSMISSION, INC.	HG ENERGY II APPALACHIA, LLC	ASSIGNMENT (68%)	1637	1081
29	FK065218	p/o 20-0422-0009-0000 p/o 20-0422-0010-0000 p/o 20-0422-0034-0001	Q100602000	BETTY A. COFFINDAFFER	ANTERO RESOURCES APPALACHIAN CORPORATION	NOT LESS THAN 1/8	1499	125
				THOMAS A. TRICOT	ANTERO RESOURCES APPALACHIAN CORPORATION	NOT LESS THAN 1/8	1499	344
				WADE H. COFFINDAFFER III	ANTERO RESOURCES APPALACHIAN CORPORATION	NOT LESS THAN 1/8	1502	174
				CONNIE SUE FERRELL	ANTERO RESOURCES APPALACHIAN CORPORATION	NOT LESS THAN 1/8	1502	184
				DEBRA COFFINDAFFER STANSBURY OYLER	ANTERO RESOURCES APPALACHIAN CORPORATION	NOT LESS THAN 1/8	1503	142
				SANDRA JO HARDWAY	ANTERO RESOURCES APPALACHIAN CORPORATION	NOT LESS THAN 1/8	1504	338
				JACKIE LYN GEAR	ANTERO RESOURCES APPALACHIAN CORPORATION	NOT LESS THAN 1/8	1504	348
				MARK JEFFREY COFFINDAFFER	ANTERO RESOURCES APPALACHIAN CORPORATION	NOT LESS THAN 1/8	1503	730
				DIANA C. ESTEVE	ANTERO RESOURCES APPALACHIAN CORPORATION	NOT LESS THAN 1/8	1504	292
				JANE ANN BARTON	ANTERO RESOURCES APPALACHIAN CORPORATION	NOT LESS THAN 1/8	1504	343
41		20-0422-0034-0000 p/o 20-0422-0034-0001		TRICOT FAMILY REVOCABLE LIVING TRUST	ANTERO RESOURCES APPALACHIAN CORPORATION	NOT LESS THAN 1/8	1601	1023

4704105713

58

ANTERO RESOURCES APPALACHIAN CORPORATION	ANTERO RESOURCES CORPORATION	MERGER/NAME CHANGE	2	914
TIMOTHY SANGER	HG ENERGY II APPALACHIA, LLC	NOT LESS THAN 1/8	1685	860
STEPHEN SANGER	HG ENERGY II APPALACHIA, LLC	NOT LESS THAN 1/8	1685	810
MICHELE SANGER	HG ENERGY II APPALACHIA, LLC	NOT LESS THAN 1/8	1687	113
STEVE SHAHEEN	HG ENERGY II APPALACHIA, LLC	NOT LESS THAN 1/8	1687	118
CHRISTOPHER SHAHEEN	HG ENERGY II APPALACHIA, LLC	NOT LESS THAN 1/8	1687	587
ANTERO RESOURCES APPALACHIAN CORPORATION	HG ENERGY II APPALACHIA, LLC	ASSIGNMENT	1708	863
ROBERT W. COFFINDAFFER AND NEVA S. COFFINDAFFER, HIS WIFE; BILLY L. COFFINDAFFER AND NORMA L. COFFINDAFFER, HIS WIFE; S. W. COFFINDAFFER AND FRANCIS COFFINDAFFER, HIS WIFE; VIRGINIA CARDER AND ERNEST E. CARDER, HER HUSBAND; VIRGINIA COFFINDAFFER, WIDOW; AVA CLEMANS GILL, WIDOW; AND LOUIS H. BARNES AND NADINE L. BARNES, HIS WIFE	JACKSON L. SMITH, DBA WEST VIRGINIA ENERGIES	NOT LESS THAN 1/8	1106	792
EVAN HUGHUS AND BARBARA K. HUGHUS, HIS WIFE; MARY CLEMANS AND ARNETT CLEMANS, HER HUSBAND; AND EMMA M. GOLDCHIEN AND ARTHUR GOLDCHIEN, HER HUSBAND	JACKSON L. SMITH, DBA WEST VIRGINIA ENERGIES	NOT LESS THAN 1/8	1106	804
J. BROOKE COFFINDAFFER, WIDOW; JOHN P. COFFINDAFFER AND BARBARA J. COFFINDAFFER, HIS WIFE; TRANNIS L. MASON, WIDOW; RUBY C. IRVINE, WIDOW	JACKSON L. SMITH, DBA WEST VIRGINIA ENERGIES	NOT LESS THAN 1/8	1106	843
ABRAHAM F. COFFINDAFFER AND MARGARET J. COFFINDAFFER, HIS WIFE; GERALDINE C. DICKENSON AND PAUL H. DICKENSON, HER HUSBAND; JOSEPHINE C. TRICOT AND EUDORE A. TRICOT, HER HUSBAND; CORBLEY W. COFFINDAFFER AND ELEANORE W. COFFINDAFFER, HIS WIFE; PAULINE C. IAMS AND MALCOLM P. IAMS, HER HUSBAND; WILLIAM B. CURREY AND VIRGINIA R. CURREY, HIS WIFE; HAZEL LYNCH COFFINDAFFER, WIDOW; MARY LEE GIBSON, WIDOW; TAYLOR COFFINDAFFER AND VIRGINIA B. COFFINDAFFER, HIS WIFE; ROBERT L. COFFINDAFFER AND AGNES J. COFFINDAFFER, HIS WIFE; BERTHA COFFINDAFFER, WIDOW; F. FRANCIS WILLIAMS AND LUETTA M. WILLIAMS, HIS WIFE; ASHBY LEE COFFINDAFFER AND ROSE S. COFFINDAFFER, HIS WIFE; WADE H. COFFINDAFFER, JR. AND WANDA B. COFFINDAFFER, HIS WIFE; EUGENE REX CURREY, SINGLE; C. BASIL COFFINDAFFER, SINGLE; WILLIAM E. COFFINDAFFER AND BETTY A. COFFINDAFFER, HIS WIFE; AND CHARLES EMORY AND INA C. JACKSON, HIS WIFE; ALBERTA WILLIAMS, SINGLE	JACKSON L. SMITH, DBA WEST VIRGINIA ENERGIES	NOT LESS THAN 1/8	1106	855
JACKSON L. SMITH, DBA WEST VIRGINIA ENERGIES	C & P OIL & GAS COMPANY	ASSIGNMENT (LEASE A)	1107	76
JOHN R. MORRIS AND JEAN D. MORRIS, HIS WIFE; ROBERT H. MORRIS AND LOIS T. MORRIS, HIS WIFE; WILLIAM Y. MORRIS AND VIRGINIA MORRIS, HIS WIFE; AND RUTH E. WATSON, WIDOW	JACKSON L. SMITH, DBA WEST VIRGINIA ENERGIES	NOT LESS THAN 1/8	1113	1063
JACKSON L. SMITH, DBA WEST VIRGINIA ENERGIES	C & P OIL & GAS COMPANY	ASSIGNMENT (LEASES B - E)	1116	705
C & P OIL & GAS COMPANY (PETE PERRI AND GUY E. MORRIS, JR)	ROBERT L. MATTHEY JR.	ASSIGNMENT	1332	1019
ROBERT L. MATTHEY JR	ROBERT L. MATTHEY SR.	ASSIGNMENT	1336	175
ROBERT L. MATTHEY JR	PAMELA PEET	ASSIGNMENT	1336	172
ROBERT L. MATTHEY SR AND ROBERT L. MATTHEY JR.	HMS RESOURCEŚ INC	ASSIGNMENT	1351	1228
HMS REOURCES INC	BEEBOB ENERGY LLC	ASSIGNMENT	1386	824
DAVID MICHAEL BENNETT	ANTERO RESOURCES APPALACHIAN CORPORATION	NOT LESS THAN 1/8	1504	49
RICHARD CHARLES BENNETT	ANTERO RESOURCES APPALACHIAN CORPORATION	NOT LESS THAN 1/8	1504	54
WENDY MARLENE BENNETT DENNY	ANTERO RESOURCES APPALACHIAN CORPORATION	NOT LESS THAN 1/8	1501	59
DOROTHY M. BROADWATER	ANTERO RESOURCES APPALACHIAN CORPORATION	NOT LESS THAN 1/8	1501	228
JOHN R. MCCORMICK	ANTERO RESOURCES APPALACHIAN CORPORATION	NOT LESS THAN 1/8	1501	233
JOANNE BROADWATER PENNY	ANTERO RESOURCES APPALACHIAN CORPORATION	NOT LESS THAN 1/8	1501	238
ROBERT L. COFFINDAFFER	ANTERO RESOURCES APPALACHIAN CORPORATION	NOT LESS THAN 1/8	1502	967
BARBARA KEIM HUGUS	ANTERO RESOURCES APPALACHIAN CORPORATION	NOT LESS THAN 1/8	1502	972
MARK JEFFREY COFFINDAFFER	ANTERO RESOURCES APPALACHIAN CORPORATION	NOT LESS THAN 1/8	1503	735
DIANE C. ESTEVE, AKA DIANA MARLENE ESTEVE	ANTERO RESOURCES APPALACHIAN CORPORATION	NOT LESS THAN 1/8	1503	1163
RUSSELL L. CURREY	ANTERO RESOURCES APPALACHIAN CORPORATION	NOT LESS THAN 1/8	1507	1097

20-0422-0016-0000
 20-0422-0017-0000
 20-0422-0018-0000
 20-0422-0018-0001
 p/o 20-0422-0010-0000

WILLIAM J. SHELDON	ANTERO RESOURCES APPALACHIAN CORPORATION	NOT LESS THAN 1/8	1509	599
CONNIE SUE COFFINDAFFER FERRELL	ANTERO RESOURCES APPALACHIAN CORPORATION	NOT LESS THAN 1/8	1504	1040
WANDA B. COFFINDAFFER	ANTERO RESOURCES APPALACHIAN CORPORATION	NOT LESS THAN 1/8	1504	1050
THOMAS A. TRICOT	ANTERO RESOURCES APPALACHIAN CORPORATION	NOT LESS THAN 1/8	1505	221
DEBRA KAY STANSBURY OYLER	ANTERO RESOURCES APPALACHIAN CORPORATION	NOT LESS THAN 1/8	1505	236
WADE H. COFFINDAFFER III	ANTERO RESOURCES APPALACHIAN CORPORATION	NOT LESS THAN 1/8	1505	241
JACKIE LYN GEAR	ANTERO RESOURCES APPALACHIAN CORPORATION	NOT LESS THAN 1/8	1505	627
SANDRA JO HARDWAY	ANTERO RESOURCES APPALACHIAN CORPORATION	NOT LESS THAN 1/8	1505	1113
JANE ANN BARTON	ANTERO RESOURCES APPALACHIAN CORPORATION	NOT LESS THAN 1/8	1505	1217
MISHA LEA MCDONIE	ANTERO RESOURCES APPALACHIAN CORPORATION	NOT LESS THAN 1/8	1506	196
ANITA S. DOUGLAS	ANTERO RESOURCES APPALACHIAN CORPORATION	NOT LESS THAN 1/8	1506	592
WILLIAM MICHAEL MCDONALD	ANTERO RESOURCES APPALACHIAN CORPORATION	NOT LESS THAN 1/8	1507	53
JAMES IVAN MCDONALD	ANTERO RESOURCES APPALACHIAN CORPORATION	NOT LESS THAN 1/8	1507	58
JAMES D. COFFINDAFFER, A WIDOWER	ANTERO RESOURCES APPALACHIAN CORPORATION	NOT LESS THAN 1/8	1507	1087
RALPH BRYAN CURREY II	ANTERO RESOURCES APPALACHIAN CORPORATION	NOT LESS THAN 1/8	1507	1092
BETTY ANN COFFINDAFFER	ANTERO RESOURCES APPALACHIAN CORPORATION	NOT LESS THAN 1/8	1508	332
JAMES B. HALCUMS AND PAMELLA J. COURTNEY, H/W	ANTERO RESOURCES APPALACHIAN CORPORATION	NOT LESS THAN 1/8	1509	667
CARNEY B JACKSON REVOCABLE TRUST	ANTERO RESOURCES APPALACHIAN CORPORATION	NOT LESS THAN 1/8	1509	682
CHARLES RUSSELL JACKSON	ANTERO RESOURCES APPALACHIAN CORPORATION	NOT LESS THAN 1/8	1509	1012
ROBERT E. HALCUMS, A SINGLE MAN	ANTERO RESOURCES APPALACHIAN CORPORATION	NOT LESS THAN 1/8	1509	1017
PAUL H. DICKENSON JR. AND JUDITH G. DICKENSON H/W	ANTERO RESOURCES APPALACHIAN CORPORATION	NOT LESS THAN 1/8	1510	125
BETTY J. FRIDLEY	ANTERO RESOURCES APPALACHIAN CORPORATION	NOT LESS THAN 1/8	1510	130
THOMAS R. MCCONNELL	ANTERO RESOURCES APPALACHIAN CORPORATION	NOT LESS THAN 1/8	1510	492
KIMBERLY JO GRIFFITH	ANTERO RESOURCES APPALACHIAN CORPORATION	NOT LESS THAN 1/8	1510	614
FRED KEITH COFFINDAFFER	ANTERO RESOURCES APPALACHIAN CORPORATION	NOT LESS THAN 1/8	1510	619
A. MORRIS CLEMANS UW [UNDER WILL] TRUST	ANTERO RESOURCES APPALACHIAN CORPORATION	NOT LESS THAN 1/8	1511	968
SIDNEY BOGGESS JACKSON	ANTERO RESOURCES APPALACHIAN CORPORATION	NOT LESS THAN 1/8	1511	973
ANITA MARIE DAVIS AND KENNETH DAVIS H/W	ANTERO RESOURCES APPALACHIAN CORPORATION	NOT LESS THAN 1/8	1511	978
TILLMAN LEE WILLIAMS	ANTERO RESOURCES APPALACHIAN CORPORATION	NOT LESS THAN 1/8	1511	983
FRANCIS WINFIELD HUGHES	ANTERO RESOURCES APPALACHIAN CORPORATION	NOT LESS THAN 1/8	1511	988
MARK ALLEN WILLIAMS	ANTERO RESOURCES APPALACHIAN CORPORATION	NOT LESS THAN 1/8	1511	993
JANET ARTHUR HUFFMAN	ANTERO RESOURCES APPALACHIAN CORPORATION	NOT LESS THAN 1/8	1511	1264
JACKSON LODGE NO. 35, A.F. & A. M. CEMETERY	ANTERO RESOURCES APPALACHIAN CORPORATION	NOT LESS THAN 1/8	1512	308
RITA JANE DAVIS	ANTERO RESOURCES APPALACHIAN CORPORATION	NOT LESS THAN 1/8	1512	889
JOHN RODNEY COFFINDAFFER	ANTERO RESOURCES APPALACHIAN CORPORATION	NOT LESS THAN 1/8	1512	909
DEIDRE L. MASON BROWN	ANTERO RESOURCES APPALACHIAN CORPORATION	NOT LESS THAN 1/8	1512	914
VIRGINIA A. COFFINDAFFER	ANTERO RESOURCES APPALACHIAN CORPORATION	NOT LESS THAN 1/8	1512	919
LINDA L. SPINELLI	ANTERO RESOURCES APPALACHIAN CORPORATION	NOT LESS THAN 1/8	1512	924
BILLY L. COFFINDAFFER AND NORMA L. COFFINDAFFER, HUSBAND AND WIFE	ANTERO RESOURCES APPALACHIAN CORPORATION	NOT LESS THAN 1/8	1512	1169
JOSEPH H. MASON	ANTERO RESOURCES APPALACHIAN CORPORATION	NOT LESS THAN 1/8	1513	72
PATRICIA LEE STEFANONI	ANTERO RESOURCES APPALACHIAN CORPORATION	NOT LESS THAN 1/8	1513	550
PATRICIA ANN PRONCHIK	ANTERO RESOURCES APPALACHIAN CORPORATION	NOT LESS THAN 1/8	1513	566
BARBARA ANN DAWSON	ANTERO RESOURCES APPALACHIAN CORPORATION	NOT LESS THAN 1/8	1513	571
BEVERLY JO COFFINDAFFER A WIDOW	ANTERO RESOURCES APPALACHIAN CORPORATION	NOT LESS THAN 1/8	1513	663
SHELLY LEGASPI	ANTERO RESOURCES APPALACHIAN CORPORATION	NOT LESS THAN 1/8	1513	668
JAMES RUSSELL RODGERS	ANTERO RESOURCES APPALACHIAN CORPORATION	NOT LESS THAN 1/8	1513	673
LESTER R. SHIELDS	ANTERO RESOURCES APPALACHIAN CORPORATION	NOT LESS THAN 1/8	1513	677
MARY JO SHORT	ANTERO RESOURCES APPALACHIAN CORPORATION	NOT LESS THAN 1/8	1513	865
LOU ANN BAKER	ANTERO RESOURCES APPALACHIAN CORPORATION	NOT LESS THAN 1/8	1513	870
KAREN JO OGRODNIK	ANTERO RESOURCES APPALACHIAN CORPORATION	NOT LESS THAN 1/8	1513	962
LINDA LOU BURCH	ANTERO RESOURCES APPALACHIAN CORPORATION	NOT LESS THAN 1/8	1513	1233
SHIRLEY J. ALKIRE, A WIDOW	ANTERO RESOURCES APPALACHIAN CORPORATION	NOT LESS THAN 1/8	1513	1238
ERNEST E. CARDER JR. AND CAROL EILEEN CARDER H/W	ANTERO RESOURCES APPALACHIAN CORPORATION	NOT LESS THAN 1/8	1513	1246
VIRGINIA COFFINDAFFER	ANTERO RESOURCES APPALACHIAN CORPORATION	NOT LESS THAN 1/8	1514	72
FRANCIS LAGATTA	ANTERO RESOURCES CORPORATION	NOT LESS THAN 1/8	1514	76
CHRIST CHURCH UNITED METHODIST	ANTERO RESOURCES CORPORATION	NOT LESS THAN 1/8	1514	433
SHERYL LYNN SMITH KOONS	ANTERO RESOURCES CORPORATION	NOT LESS THAN 1/8	1514	971

4704105713

58

20-0422-0015-0000
 20-0422-0015-0001
 20-0422-0015-0002
 20-0422-0015-0003
 20-0422-0031-0000

JAMES FERRIL MORRIS	ANTERO RESOURCES APPALACHIAN CORPORATION	NOT LESS THAN 1/8	1514	989
SUSAN J. SMITH	ANTERO RESOURCES CORPORATION	NOT LESS THAN 1/8	1514	994
SANDRA E. MORRIS, WIDOW OF JOHN KENT MORRIS	ANTERO RESOURCES APPALACHIAN CORPORATION	NOT LESS THAN 1/8	1515	35
JOSEPH WILLIAM COFFINDAFFER, SINGLE	ANTERO RESOURCES APPALACHIAN CORPORATION	NOT LESS THAN 1/8	1515	252
CARL R. LINGERFELT	ANTERO RESOURCES CORPORATION	NOT LESS THAN 1/8	1515	257
TERRI J. JONES	ANTERO RESOURCES CORPORATION	NOT LESS THAN 1/8	1515	270
JOHN C. IRVINE AND JO C. IRVINE, HUSBAND AND WIFE	ANTERO RESOURCES CORPORATION	NOT LESS THAN 1/8	1515	275
JIMMIE JO SMITH AND JIMMMY LEE SMITH W/H	ANTERO RESOURCES APPALACHIAN CORPORATION	NOT LESS THAN 1/8	1515	744
DIANA JEAN SMITH RAHM	ANTERO RESOURCES CORPORATION	NOT LESS THAN 1/8	1515	749
GARNETT LEE COFFINDAFFER & MARY R. COFFINDAFFER H/W	ANTERO RESOURCES APPALACHIAN CORPORATION	NOT LESS THAN 1/8	1515	1127
LINDA M. SLAGLE	ANTERO RESOURCES CORPORATION	NOT LESS THAN 1/8	1515	1132
JULIE A. YOUNG, FKA JULIE A. CARDER AND RICHARD L. YOUNG, HER HUSBAND	ANTERO RESOURCES CORPORATION	NOT LESS THAN 1/8	1515	1137
PATRICIA SANDOVAL AND ALBERTO SANDOVAL HER HUSBAND	ANTERO RESOURCES CORPORATION	NOT LESS THAN 1/8	1515	1146
SUZANNE BOWLES AND MARFORD B. BOWLES W/H	ANTERO RESOURCES APPALACHIAN CORPORATION	NOT LESS THAN 1/8	1516	204
ROBERT L. CARDER AND DEBRA K. CARDER H/W	ANTERO RESOURCES CORPORATION	NOT LESS THAN 1/8	1516	209
PHILLIP ROGER SLAGLE JR	ANTERO RESOURCES CORPORATION	NOT LESS THAN 1/8	1516	218
JOHN ALLEN COFFINDAFFER, MARRIED	ANTERO RESOURCES APPALACHIAN CORPORATION	NOT LESS THAN 1/8	1516	228
BRUCE I. MACNEILL	ANTERO RESOURCES CORPORATION	NOT LESS THAN 1/8	1516	507
MARY BIRD FERGUSON TR UAD 3-21-2005 AS AMENDED AND RESTATED	ANTERO RESOURCES CORPORATION	NOT LESS THAN 1/8	1516	516
MICHAEL K. JONES	ANTERO RESOURCES CORPORATION	NOT LESS THAN 1/8	1516	706
LUCILLE R. TAYLOR	ANTERO RESOURCES CORPORATION	NOT LESS THAN 1/8	1516	721
JEWELL S. COFFINDAFFER AND MARY E. COFFINDAFFER H/W	ANTERO RESOURCES APPALACHIAN CORPORATION	NOT LESS THAN 1/8	1516	1215
ARTHUR HUBACHER	ANTERO RESOURCES CORPORATION	NOT LESS THAN 1/8	1517	1111
MARY MCKOWN	ANTERO RESOURCES CORPORATION	NOT LESS THAN 1/8	1517	1123
MARY E. FELTIS, A WIDOW	ANTERO RESOURCES APPALACHIAN CORPORATION	NOT LESS THAN 1/8	1518	129
GARY L. HYRE	ANTERO RESOURCES CORPORATION	NOT LESS THAN 1/8	1518	139
CHARLES EDWIN MORRIS	ANTERO RESOURCES CORPORATION	NOT LESS THAN 1/8	1518	565
UNIVERSITY OF CHARLESTON INC, FKA MORRIS HARVEY COLLEGE FOR MORRIS HARVEY COLLEGE SCHOLARSHIP FUND	ANTERO RESOURCES CORPORATION	NOT LESS THAN 1/8	1521	766
MARYJO ROBIN MORRIS MARSH	ANTERO RESOURCES CORPORATION	NOT LESS THAN 1/8	1522	970
ROBERT W. MORRIS	ANTERO RESOURCES CORPORATION	NOT LESS THAN 1/8	1522	972
WILLIAM H. MORRIS	ANTERO RESOURCES CORPORATION	NOT LESS THAN 1/8	1522	974
PAMELA PEET	ANTERO RESOURCES CORPORATION	PARTIAL ASSIGNMENT	1524	568
HMS REOURCES INC	ANTERO RESOURCES CORPORATION	PARTIAL ASSIGNMENT	1524	575
BEEBOB ENERGY LLC	ANTERO RESOURCES CORPORATION	PARTIAL ASSIGNMENT	1524	561
GLEN E. KOST	ANTERO RESOURCES CORPORATION	NOT LESS THAN 1/8	1524	785
TRICOT FAMILY REVOCABLE LIVING TRUST DATED OCTOBER 8, 2003	ANTERO RESOURCES CORPORATION	NOT LESS THAN 1/8	1576	170
ANTERO RESOURCES APPALACHIAN CORPORATION	ANTERO RESOURCES CORPORATION	MERGER/NAME CHANGE	2	914
ANTERO RESOURCES CORPORATION	HG ENERGY II APPALACHIA, LLC	ASSIGNMENT	1708	863
EDWARD J. RIGHTMIRE AND AGNES RIGHTMIRE, HIS WIFE	FRED S. RICH	NOT LESS THAN 1/8	112	476
FRED S. RICH AND M. B. RICH, HIS WIFE	GEORGE H. CORNWALL AND JOHN M. REED	ASSIGNMENT	132	385
FRED S. RICH AND M.B. RICH, HIS WIFE; GEORGE H. CORNWALL AND MARY D. CORNWALL, HIS WIFE; J.M. REED AND ELLA REED, HIS WIFE; (SAID RICH, CORNWALL AND REED BEING PARTNERS AS FRED S. RICH & CO.), AND W.I. GOBLE AND L.M. GOBLE, HIS WIFE	CRUDE OIL COMPANY	ASSIGNMENT	160	101
CRUDE OIL COMPANY, A WEST VIRGINIA COMPANY	CRUDE OIL COMPANY, AN OHIO CORPORATION	ASSIGNMENT	308	142
CRUDE OIL COMPANY	FEDERAL OIL AND GAS COMPANY	ASSIGNMENT	323	163
FRANCIS H. BEAM, SPECIAL MASTER	A. E. MACKINTOSH	ASSIGNMENT	442	52
A. E. MACKINTOSH AND LETITIA MACKINTOSH, HIS WIFE	SEPTER W. DOUGLAS	ASSIGNMENT	467	567
ELIZABETH H. DOUGLAS, A WIDOW, EXECUTRIX OF THE LAST WILL AND TESTATMENT OF SEPTER W. DOUGLAS, DECEASED	ALFRED D. BARNES	ASSIGNMENT	556	559
ALFRED D. BARNES AND MARAN K. BARNES, HIS WIFE; AND THE OIL CITY TRUST COMPANY	HOPE NATURAL GAS COMPANY	ASSIGNMENT	570	518
HOPE NATURAL GAS COMPANY	CONSOLIDATED GAS SUPPLY CORPORATION	CONFIRMATORY DEED	903	179
CONSOLIDATED GAS SUPPLY CORPORATION	CONSOLIDATED GAS TRANSMISSION CORPORATION	ASSIGNMENT	1136	250

CONSOLIDATED GAS TRANSMISSION CORPORATION	CNG TRANSMISSION CORPORATION	MERGER/NAME CHANGE	51	795
CNG TRANSMISSION CORPORATION	DOMINION TRANSMISSION, INC.	MERGER/NAME CHANGE	58	362
DOMINION EXPLORATION & DEVELOPMENT INC., DOMINION TRANSMISSION INC., AND DOMINION APPALACHIAN DEVELOPMENT LLC	ANTERO RESOURCES APPALACHIAN CORPORATION	ASSIGNMENT	1423	1068
ANTERO RESOURCES APPALACHIAN CORPORATION	ANTERO RESOURCES CORPORATION	MERGER/NAME CHANGE	2	914
ANTERO RESOURCES CORPORATION	HG ENERGY II APPALACHIA, LLC	ASSIGNMENT	1708	863

53

4704105713



HG Energy, LLC
5260 Dupont Road
Parkersburg, WV 26101
(304) 420-1100 - Office
(304) 863-3172 - Fax

41-05713 MOD

April 9, 2021

WV DEP
Division of Oil & Gas
Attn: Kelly Kees
601 57th Street
Charleston, West Virginia 25304

RE: Flesher 1212 N-9H Request for Permit Revision – (47-041-05713)
Freemans Creek District, Lewis County, West Virginia
Request for Modification Due to Acquiring Additional Leases

Dear Ms. Kees -

Per our discussions, enclosed are revised forms (survey plat, mylar, WW-6B, casing schematic, and WW6A-1) for the requested 1212 N-9H well work drill permit revision. We request the permit be modified to reflect additional leases acquired to length the lateral.

Please let me know if you have any questions or require additional information. I can be reached at (304) 420-1119 or dwhite@hgenergyllc.com.

Very truly yours,

Diane White

Diane C. White

Enclosures

cc: Barry Stollings – DEP State Inspector

RECEIVED
Office of Oil and Gas

APR 12 2021

WV Department of
Environmental Protection

05/14/2021

4704105713

Permit Modification

Received date: 4/12/21

Well Name: N-9H

Operator: HG

API: 41-5713

Pad Name: Ylesher 12B

	MODIFIED PERMIT	ORIGINAL PERMIT
TVD	✓	6925
TMD	28043	23753
HL	19622	15332
FW	✓	105,273,302
SW	✓	1028
COAL	✓	N/A
CONDUCTOR	✓	120
FRESHWATER	✓	1000
INTERMEDIATE 1	✓	2100
INTERMEDIATE 2	✓	2900
PRODUCTION	28043	23753

Notes: Orig (Denial) - 16, 18, 20, 22, 25, 26, 29, 30, 39, 44
45, 52, 54, 55, 56

New 18, 20, 22, 25, 26, 29, 30, 41, 44, 45, 52, 54, 55
56, 58, 63