



west virginia department of environmental protection

Office of Oil and Gas
601 57th Street, S.E.
Charleston, WV 25304
(304) 926-0450
fax: (304) 926-0452

Harold D. Ward, Cabinet Secretary
www.dep.wv.gov

Tuesday, July 13, 2021
PERMIT MODIFICATION APPROVAL
Horizontal 6A / New Drill

HG ENERGY II APPALACHIA, LLC
5260 DUPONT ROAD

PARKERSBURG, WV 26101

Re: Permit Modification Approval for FLESHER 1212 S-6H
47-041-05714-00-00

Lateral Extension

HG ENERGY II APPALACHIA, LLC

The Office of Oil and Gas has reviewed the attached permit modification for the above referenced permit. The attached modification has been approved and well work may begin. Please be reminded that the oil and gas inspector is to be notified twenty-four (24) hours before permitted well work is commenced.

If there are any questions, please feel free to contact me at (304) 926- 0450.

A handwritten signature in blue ink, appearing to read "James A. Martin".

James A. Martin
Chief

Operator's Well Number: FLESHER 1212 S-6H
Farm Name: H. G. ENERGY II APPALACHIA, LLC
U.S. WELL NUMBER: 47-041-05714-00-00
Horizontal 6A New Drill
Date Modification Issued: July 13, 2021

Promoting a healthy environment.

07/16/2021



HG Energy, LLC
5260 Dupont Road
Parkersburg, WV 26101
(304) 420-1100 - Office
(304) 863-3172 - Fax

May 27, 2021

WV DEP
Division of Oil & Gas
Attn: Kelly Kees
601 57th Street
Charleston, West Virginia 25304

RE: Flesher 1212 S-6H Request for Permit Revision – (47-041-05714)
Freemans Creek District, Lewis County, West Virginia
Request for Modification Due to Acquiring Additional Leases

Dear Ms. Kees -

Per our discussions, enclosed are revised forms (survey plat, mylar, WW-6B, casing schematic, and WW6A-1) for the requested 1212 S-6H well work permit revision. We ask the permit be modified to reflect additional leases acquired to length the lateral.

Please let me know if you have any questions or require additional information. I can be reached at (304) 420-1119 or dwhite@hgenergyllc.com.

Very truly yours,

Diane White

Diane C. White

Enclosures

cc: Sam Ward – DEP State Inspector

RECEIVED
Office of Oil and Gas
JUN 04 2021
WV Department of
Environmental Protection

07/16/2021

STATE OF WEST VIRGINIA
DEPARTMENT OF ENVIRONMENTAL PROTECTION, OFFICE OF OIL AND GAS
WELL WORK PERMIT APPLICATION

1) Well Operator: HG Energy II Appalachia, L.P. 494519932 Lewis Freeman Weston 7.5'
Operator ID County District Quadrangle

2) Operator's Well Number: Flesher 1212 S-6H Well Pad Name: Flesher 1212

3) Farm Name/Surface Owner: Flesher Public Road Access: SR19 to Kincheloe Run Rd to Valley Chapel Rd

4) Elevation, current ground: 1338' Elevation, proposed post-construction: 1332'

5) Well Type (a) Gas Oil Underground Storage

Other _____

(b) If Gas Shallow Deep _____

Horizontal _____

JCB
With verbal permission from Sam Ward
7/13/2021

6) Existing Pad: Yes or No No

7) Proposed Target Formation(s), Depth(s), Anticipated Thickness and Expected Pressure(s):
Marcellus at 6845'/6927' and 82' in thickness. Anticipated pressure at 4314#.

8) Proposed Total Vertical Depth: 6913'

9) Formation at Total Vertical Depth: Marcellus

10) Proposed Total Measured Depth: 23,393'

11) Proposed Horizontal Leg Length: 15,845'

12) Approximate Fresh Water Strata Depths: 105', 273', 302'

13) Method to Determine Fresh Water Depths: Nearest offset well data, (47-041-5338, 0218)

14) Approximate Saltwater Depths: 1028' (Nearest offset well data, 47-041-1673)

15) Approximate Coal Seam Depths: 420', 525' 830' (Surface casing is being extended to cover the coal in the DTI Storage Field)

16) Approximate Depth to Possible Void (coal mine, karst, other): None

17) Does Proposed well location contain coal seams directly overlying or adjacent to an active mine? Yes _____ No

RECEIVED
Office of Oil and Gas
JUN 04 2021

(a) If Yes, provide Mine Info: Name: _____
Depth: _____
Seam: _____
Owner: _____

WV Department of
Environmental Protection

WW-6B
(04/15)

API NO. 47- OH - 05714
 OPERATOR WELL NO. Flesher 1212 S-6H
 Well Pad Name: Flesher 1212

18)

CASING AND TUBING PROGRAM

TYPE	Size (in)	New or Used	Grade	Weight per ft. (lb/ft)	FOOTAGE: For Drilling (ft)	INTERVALS: Left in Well (ft)	CEMENT: Fill-up (Cu. Ft.)/CTS
Conductor	30"	New	LS	157.5	120'	120'	Drilled In
Fresh Water/Coal	20"	NEW	J-55	94	1000'	1000' ✓	CTS
Intermediate 1	13 3/8"	NEW	J-55 BTC	68	2100'	2100'	CTS
Intermediate 2	9 5/8"	NEW	J-55 BTC	40	2900'	2900'	CTS
Production	5 1/2"	NEW	P-110 HP	23	23393'	23393' ✓	CTS
Tubing							
Liners							

JCB
6/13/2021

TYPE	Size (in)	Wellbore Diameter (in)	Wall Thickness (in)	Burst Pressure (psi)	Anticipated Max. Internal Pressure (psi)	Cement Type	Cement Yield (cu. ft./k)
Conductor	30"	30"	.500				Drilled In
Fresh Water/Coal	20"	26"	.438	2110	1200	Type 1, Class A	40% excess yield = 1.20, CTS
Intermediate 1	13 3/8"	17 1/2"	.480	3450		Type 1/Class A	Lead 40% excess, Tail 0% excess
Intermediate 2	9 5/8"	12 1/4"	.395	3950		Type 1/Class A	Lead 40% excess, Tail 0% excess
Production	5 1/2"	8 1/2"	.415	16240	12500	Type 1/Class A	20% excess yield = 1.19, tail yield 1.20
Tubing							
Liners							

RECEIVED
Office of Oil and Gas

JUN 04 2021

PACKERS

Kind:				WV Department of Environmental Protection
Sizes:				
Depths Set:				

WW-6B
(10/14)

API NO. 47- 041 - 05714
OPERATOR WELL NO. Flesher 1212 S-6H
Well Pad Name: Flesher 1212

19) Describe proposed well work, including the drilling and plugging back of any pilot hole:

Drill the vertical depth to the Marcellus at an estimated total vertical depth of approximately 6913 feet. Drill horizontal leg to estimated 15,845' lateral length, 23,393' TMD. Hydraulically fracture stimulate and be capable of producing from the Marcellus Formation. Should we encounter an unanticipated void in the coal, we will install a minimum of 20' of casing below the void but not more than 100' below the void, set a basket and grout to surface. We plan to run an ACP above the Gantz/Dominion Storage interval to aid in sealing off and isolating the storage interval.

20) Describe fracturing/stimulating methods in detail, including anticipated max pressure and max rate:

The stimulation will be completed with multiple stages divided over the lateral length of the well. Stage spacing is dependent upon engineering design. Slickwater fracturing technique will be utilized on each stage using sand, water, and chemicals. See attached list. Maximum pressure not to exceed 12,500 psi.

JCB
7/13/2021

21) Total Area to be disturbed, including roads, stockpile area, pits, etc., (acres): 33.17 acres

22) Area to be disturbed for well pad only, less access road (acres): 6.84 acres

23) Describe centralizer placement for each casing string:

No centralizers will be used with conductor casing.
Freshwater/Coal - centralized every 2 joints to surface.
Intermediate 1 - Bow Spring on every joint, will also be running ACP for isolating storage zone.
Intermediate 2 - Bow Spring on first 2 joints then every third joint to 100' from surface.
Production - Run 1 spiral centralizer every 2 joints from the top of the curve to surface. Run 1 spiral centralizer every 2 joints from the 1st 5.5' long joint to the top of the curve.

24) Describe all cement additives associated with each cement type:

Conductor - NA, Casing to be drilled in w/ Dual Rotary Rig.
Fresh Water/Coal - 16.0 ppg PHE-1 + 3% bwoc CaCl₂ 40% Excess Yield + 1.2% CTS
Intermediate 1 - Lead: 15.4 ppg PHE-1 + 2.5% bwoc CaCl₂ 40% Excess / Tail: 15.0 ppg PHE-1 + 2.5% bwoc CaCl₂ 40% Excess, CTS
Intermediate 2 - Lead: 15.4 ppg PHE-1 + 2.5% bwoc CaCl₂ 40% Excess / Tail: 15.0 ppg PHE-1 + 2.5% bwoc CaCl₂ 40% Excess, CTS
Production - Lead: 14.3 ppg POZ-PHE-1 + 0.3% bwoc RI + 1% bwoc ECI + 0.75 gal/ft FP13L + 0.3% bwoc MPA170. Tail: 14.8 ppg PHE-1 + 0.3% bwoc RI + 1.75 gal/ft FP13L + 50% bwoc AEC1 + 0.5% bwoc MPA170 20% Excess, Lead Yield=1.18, Tail Yield=1.04, CTS

RECEIVED
Office of Oil and Gas

JUN 04 2021

ENVIRONMENTAL PROTECTION
Department of

25) Proposed borehole conditioning procedures:

Conductor - Ensure the hole is clean at TD.
Fresh Water/Coal - Once casing is at setting depth, circulate a minimum of one hole volume with Fresh Water prior to pumping cement.
Intermediate 1 - Once casing is at setting depth, Circulate and condition at TD. Circulate a minimum of one hole volume prior to pumping cement.
Intermediate 2 - Once casing is at setting depth, Circulate and condition mud at TD. Circulate a minimum of one hole volume prior to pumping cement.
Production - Once on bottom with casing, circulate at slow allowable pump rate for at least 2x before use, or until returns and pump pressures indicate the hole is clean. Circulate a minimum of one hole volume prior to pumping cement.

*Note: Attach additional sheets as needed.

17040514



RECEIVED
Office of Oil and Gas
N 04 2021

Department of
Environmental Protection

1212 S-6H
Marcellus Shale Horizontal
Lewis County, WV

JCB
7/13/2021

Ground Elevation			1332.2'			1212 S-6H SHL			14206067.78N 1785729.51E		
Azm			159.974 / 162.656 / 158.914°			1212 S-6H LP			14205130.8N 1784675.19E		
WELLBORE DIAGRAM			159.974 / 162.656 / 158.914°			1212 S-6H BHL			14190195.62N 1789931.76E		
HOLE	CASING	GEOLOGY	TOP	BASE	MUD	CEMENT	CENTRALIZERS	CONDITIONING	COMMENTS		
30"	30" 157.5# LS	Conductor	0	120	AIR	N/A, Casing to be drilled in w/ Dual Rotary Rig	N/A	Ensure the hole is clean at TD.	Conductor casing = 0.5" wall thickness		
		Fresh Water	0	273	AIR	15.6 ppg PNE-1 + 3% bwoc CaCl 40% Excess Yield=1.20 / CTS	Centralized every 3 joints to surface	Once casing is at setting depth, circulate a minimum of one hole volume with Fresh Water prior to pumping cement.	Surface casing = 0.438" wall thickness Burst=2110 psi		
Kitaning Coal	997	992									
Fresh Water Protection	0	1000									
17.5"	13-3/8" 66# J-55 BTC	Big Lime	1548	1613	AIR / KCL Salt Polymer	Lead: 15.4 ppg PNE-1 + 2.5% bwoc CaCl 40% Excess / Tail: 15.9 ppg PNE-1 + 2.5% bwoc CaCl zero% Excess. CTS	Bow Spring on every joint <i>*will also be running ACP for isolating storage zone*</i>	Once casing is at setting depth, Circulate and condition at TD. Circulate a minimum of one hole volume prior to pumping cement.	Intermediate casing = 0.480" wall thickness Burst=3450 psi		
		Injun / Gantz (Storage)	1613 / 1898	1718 / 1958							
		Intermediate 1	0	2100							
12.25"	9-5/8" 40# J-55 BTC	Fifty / Thirty Foot	2008 / 2105	2033 / 2128	AIR / KCL Salt Polymer	Lead: 15.4 ppg PNE-1 + 2.5% bwoc CaCl 40% Excess / Tail: 15.9 ppg PNE-1 + 2.5% bwoc CaCl zero% Excess. CTS	Bow Spring on first 2 joints then every third joint to 100' from surface	Once casing is at setting depth, Circulate and condition mud at TD. Circulate a minimum of one hole volume prior to pumping cement.	Intermediate casing = 0.395" wall thickness Burst=3950 psi		
		Gordon Gray / Gordon	2128 / 2198	2199 / 2288							
		5th Sand	2374	2416							
		Bayard Sand	2450	2490							
		Intermediate 2	0	2900							
9.75" Vertical	5-1/2" 23# P-110 HP CDC HTG	Speechley	3078	3095	AIR / 9.0ppg SOBMs	Lead: 14.5 ppg POZ-PNE-1 + 0.3% bwoc R3 + 1% bwoc EC1 + 0.75 gal/sk FP13L + 0.3% bwoc MPA170 Tail: 14.8 ppg PNE-1 + 0.35% bwoc R3 + 0.75 gal/sk FP13L + 50% bwoc ASCA1 + 0.6% bwoc MPA170 20% Excess Lead Yield=1.19 Tail Yield=1.94 CTS	Run 1 spiral centralizer every 5 joints from the top of the curve to surface.	Once on bottom/TD with casing, circulate at max allowable pump rate for at least 2x bottoms up or until returns and pump pressures indicate the hole is clean. Circulate a minimum of one hole volume prior to pumping cement.	Production casing = 0.415" wall thickness Burst=16240 psi Note: Actual centralizer schedules may be changed due to hole conditions		
		Balltown	3278	3350							
		Banson	4370	4382							
8.5" Curve		Rhinestraet	6256	6445	11.6ppg-12.5ppg SOBMs						
		Cashaqua	6445	6526							
		Middlesex	6526	6826							
		West River	6825	6860							
		Burkett	6660	6751							
		Tully Limestone	6751	6815							
		Hamilton	6815	6753							
8.5" Lateral	Marcellus	6845	6927	11.6ppg-12.5ppg SOBMs							
	TMD / TVD (Production)	23393	6913								
		Onondaga	8927								

LP @ 6913' TVD / 7548' MD

8.5" Hole - Cemented Long String
5-1/2" 23# P-110 HP CDC HTG

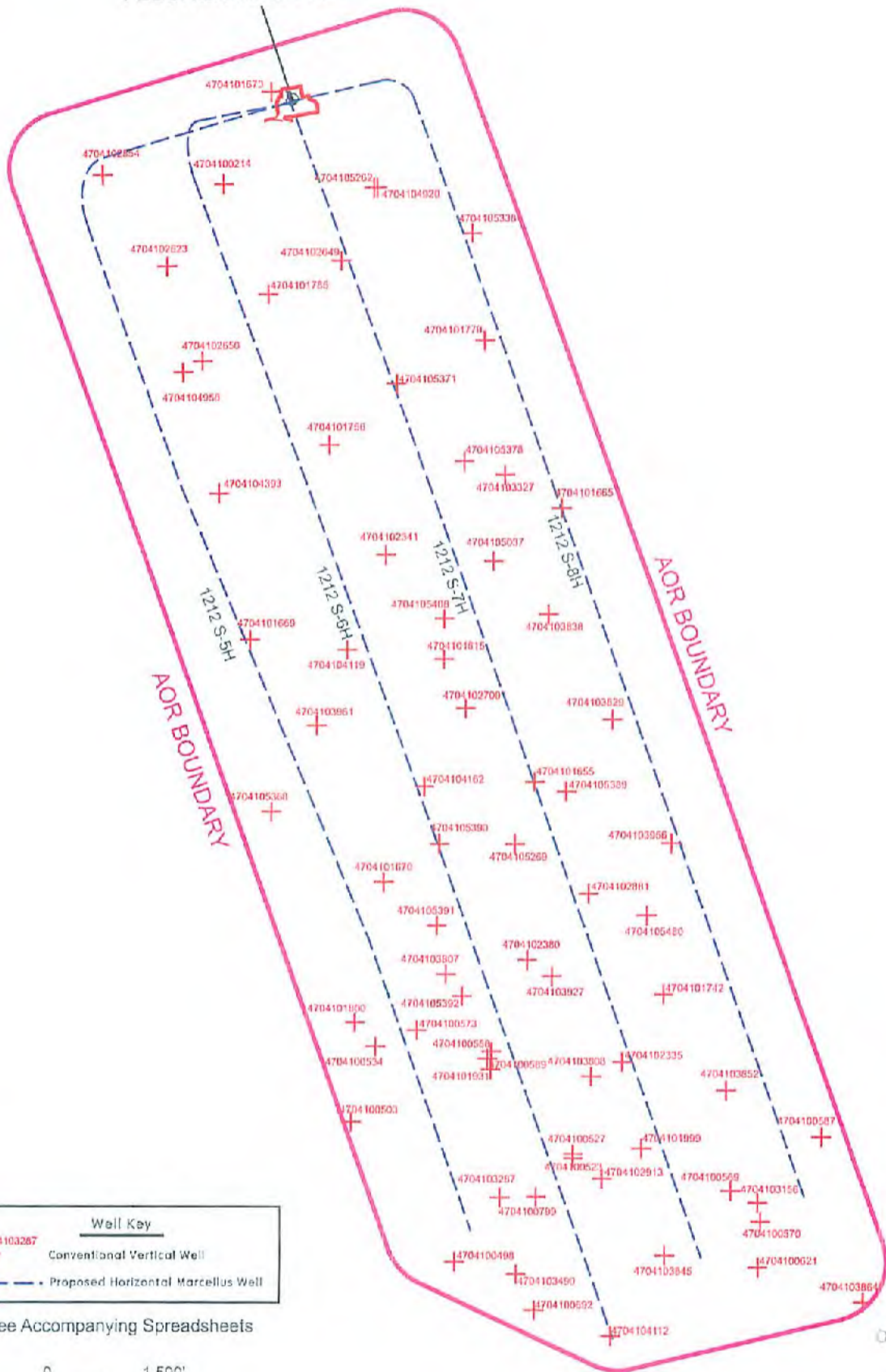
+/-15845' Lateral

TD @ +/-6913' TVD
+/-23393' MD

X=centralizers

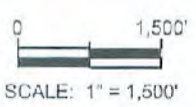


FLESHER 1212 PAD



Well Key	
	Conventional Vertical Well
	Proposed Horizontal Marcellus Well

See Accompanying Spreadsheets



DATA SOURCES
WVGES Data Set - 2017; WVDEP Website

RECEIVED
Office of Oil and Gas
JUN 04 2021
WV Department of
Environmental Protection

Area of Review for:

FLESHER 1212 SOUTH UNIT

Proposed 1212 S-5H Proposed 1212 S-6H
Proposed 1212 S-7H Proposed 1212 S-8H

HG ENERGY, II APPALACHIA, LLC
5260 DuPont Road, Parkersburg, WV 26101



Freeman's Creek District, Lewis County, W.Va.

12/10/2020

**EXISTING WELLS LOCATED WITHIN THE AREA OF REVIEW FOR:
FLESHER 1212 SOUTH UNIT AND PROPOSED WELLS S-5H, S-6H, S-7H & S-8H**

CT	API	COUNTY	FARM	OPERATOR NAME	FORMATION NAME	WELL TYPE	TVD	STATUS	LATITUDE	LONGITUDE
1	4704100214	Lewis	Geo Norris	Dominion Energy Transmission, Inc.	Hampshire Grp	Storage	2275	ACTIVE	39.115382	-80.480758
2	4704100498	Lewis	L Bailey 1	Deran Resources, Inc.	Up Devonian	Gas	2211	ACTIVE	39.077335	-80.480659
3	4704100503	Lewis	J J Bailey 2	Geo Energy, LLC	Price Fm & equivs	Gas w/ Oil Show	1385	ACTIVE	39.082266	-80.485313
4	4704100523	Lewis	Hope McDonald et al 1	Hays & Company	Price Fm & equivs	Gas w/ Oil Show	1750	PLUGGED	39.080961	-80.475265
5	4704100527	Lewis	B B Butcher 1	Lippizan Petroleum, Inc.	Price Fm & equivs	Gas w/ Oil Show	1410	ACTIVE	39.081106	-80.475265
6	4704100534	Lewis	Georg Dean 2	Geo Energy, LLC	Price Fm & equivs	Gas	1381	ACTIVE	39.084922	-80.484197
7	4704100558	Lewis	Doyle Butcher et al 2	Lippizan Petroleum, Inc.	Price Fm & equivs	Gas	1364	ACTIVE	39.084632	-80.479545
8	4704100569	Lewis	W W Chapman 1	Clem Energy, LLC	Unkown	Gas	-	ABANDONED	39.079798	-80.468192
9	4704100570	Lewis	W W Chapman 1	Law, David W.	Price Fm & equivs	Gas	1363	ABANDONED	39.079511	-80.466333
10	4704100573	Lewis	Clete Butcher et al 1	Bower, Hall and Wetzel	Price Fm & equivs	Gas	1441	PLUGGED	39.085502	-80.482337
11	4704100587	Lewis	Clay Maxwell Jr 1	Cohen, Henry	Big Injun (Grnbr)	Gas w/ Oil Show	1368	PLUGGED	39.081686	-80.464101
12	4704100589	Lewis	Doyle Vutcher 3	Law, David W.	Conemaugh Group	Dry w/ Gas Show	435	PLUGGED	39.084342	-80.479173
13	4704100621	Lewis	W W Riggs 1	Tower Service Company	Price Fm & equivs	Gas	1410	PLUGGED	39.077105	-80.466986
14	4704100799	Lewis	Carl Harrison 1	Bagwell & Trader	Price Fm & equivs	Gas	1360	ABANDONED	39.079613	-80.476936
15	4704101615	Lewis	Sophia Butcher	Dominion Energy Transmission, Inc.	Benson	Gas	4210	ACTIVE	39.098539	-80.481047
16	4704101655	Lewis	Sophia Butcher	Alliance Petroleum, Co., LLC	Greenland Gap Fm	Gas	4120	ACTIVE	39.094203	-80.476943
17	4704101665	Lewis	Charles F Bailey	Dominion Energy Transmission, Inc.	Greenland Gap Fm	Gas	4250	ACTIVE	39.103826	-80.475644
18	4704101669	Lewis	Charles I Bailey	Dominion Energy Transmission, Inc.	Greenland Gap Fm	Gas	4110	ACTIVE	39.099278	-80.489786
19	4704101670	Lewis	J W Norris	Alliance Petroleum, Co., LLC	Benson	Gas	4425	ACTIVE	39.090722	-80.483827
20	4704101673	Lewis	Cecil I Dempsey	Dominion Energy Transmission, Inc.	Greenland Gap Fm	Gas	4509	ACTIVE	39.118527	-80.488538
21	4704101742	Lewis	WV University Board of Gov	Alliance Petroleum, Co., LLC	Benson	Gas	4205	ACTIVE	39.086743	-80.471172
22	4704101756	Lewis	W E Carpenter	Dominion Energy Transmission, Inc.	Benson	Gas	4220	ACTIVE	39.106120	-80.486154
23	4704101779	Lewis	C F Bailey	Dominion Energy Transmission, Inc.	Benson	Gas	4446	ACTIVE	39.109755	-80.479062
24	4704101785	Lewis	C L Hitt	Dominion Energy Transmission, Inc.	Benson	Gas	4440	ACTIVE	39.111471	-80.488801
25	4704101800	Lewis	George W Dean Jr	Greylock Conventional, LLC	Benson	Gas	4305	ACTIVE	39.085792	-80.485128
26	4704101931	Lewis	Doyle Butcher 3	Lippizan Petroleum, Inc.	Benson	Gas	4163	ACTIVE	39.084052	-80.479917
27	4704101999	Lewis	Granville Butcher	Mountain, LLC	Fifth	Gas	4436	ACTIVE	39.081302	-80.472195
28	4704102335	Lewis	G Butcher	Alliance Petroleum, Co., LLC	Hampshire Grp	Gas	2575	ACTIVE	39.084342	-80.473033
29	4704102341	Lewis	Edna Brown	Dominion Energy Transmission, Inc.	Greenland Gap Fm	Gas	4280	ACTIVE	39.102228	-80.483644
30	4704102380	Lewis	Burt Keister	Alliance Petroleum, Co., LLC	Hampshire Grp	Gas	2000	ACTIVE	39.087967	-80.477313
31	4704102623	Lewis	Geo Norris	Dominion Energy Transmission, Inc.	Unkown	Storage	-	ACTIVE	39.112510	-80.493384
32	4704102649	Lewis	George Norris	Dominion Energy Transmission, Inc.	Unkown	Storage	-	ACTIVE	39.112620	-80.485511
33	4704102650	Lewis	Ira L Queen	Dominion Energy Transmission, Inc.	Unkown	Storage	-	ACTIVE	39.109140	-80.491838
34	4704102709	Lewis	Sophia Butcher	Consolidated Gas Supply Corp.	Unkown	not available	-	ABANDONED	39.096803	-80.480078

RECEIVED
 Office of Oil and Gas
 JUN 04 2021
 WV Department of
 Environmental Protection

35	4704102854	Lewis	J S Norris	Dominion Energy Transmission, Inc.	not available	Storage	-	ACTIVE	39.115783	-80.496273
36	4704102881	Lewis	WVU Board of Governors	Alliance Petroleum, Co., LLC	Greenland Gap Fm	Gas	4250	ACTIVE	39.090287	-80.474523
37	4704102913	Lewis	John J Oldaker III	Jackson Fuel Corporation	Benson	Gas	4384	ACTIVE	39.080236	-80.473962
38	4704103156	Lewis	John F Wyant 1	Clem Energy, LLC	Elk	Gas	5757	ACTIVE	39.078351	-80.466333
39	4704103287	Lewis	Michael F Tierney Jr et al	Alliance Petroleum, Co., LLC	Brallier	Gas	5891	ACTIVE	39.079584	-80.478590
40	4704103327	Lewis	Rizpah B Carpenter	Dominion Energy Transmission, Inc.	Hampshire Grp	Gas	2380	PLUGGED	39.105009	-80.478216
41	4704103490	Lewis	Martha Queen 1-A	Prince Petroleum, Inc.	Benson	Gas	4287	ABANDONED	39.076900	-80.477868
42	4704103807	Lewis	Martha Carpenter	Alliance Petroleum, Co., LLC	Brallier	Gas	6050	ACTIVE	39.087478	-80.481020
43	4704103808	Lewis	Amy B Dent	Alliance Petroleum, Co., LLC	Brallier	Gas	5980	ACTIVE	39.084487	-80.474149
44	4704103829	Lewis	David Hamrick	Alliance Petroleum, Co., LLC	Brallier	Gas	5791	ACTIVE	39.095668	-80.473222
45	4704103838	Lewis	Charles F. Bailey	Dominion Energy Transmission, Inc.	Benson	Gas	4314	ACTIVE	39.100088	-80.476278
46	4704103845	Lewis	Alva Butcher	Alliance Petroleum, Co., LLC	Benson	Gas	4984	ACTIVE	39.077626	-80.470798
47	4704103852	Lewis	Patricia Hall	Alliance Petroleum, Co., LLC	Benson	Gas	4264	ACTIVE	39.083327	-80.468381
48	4704103864	Lewis	Vivian Thompson 1	Alliance Petroleum, Co., LLC	Benson	Gas	4225	ACTIVE	39.075885	-80.462240
49	4704103927	Lewis	Word of Life Christians	Diversified Resources, Inc.	Benson	Gas	4170	ACTIVE	39.087387	-80.476197
50	4704103956	Lewis	WV Board of Control	Devonian Gas Production, Inc.	Greenland Gap Fm	Gas w/ Oil Show	4230	ACTIVE	39.092028	-80.470801
51	4704103961	Lewis	John Norris	Enervest Operating, LLC	Benson	Gas	4280	ACTIVE	39.095233	-80.486807
52	4704104119	Lewis	Patricia Jo Beeson 1	Alliance Petroleum, Co., LLC	Greenland Gap Fm	Gas	4190	ACTIVE	39.098896	-80.485399
53	4704104162	Lewis	Michael L/Judy K Huntz	Berry Energy, Inc.	Greenland Gap Fm	Gas	4210	ACTIVE	39.094058	-80.481968
54	4704104393	Lewis	Richard D Carpenter	Dominion Energy Transmission, Inc.	Greenland Gap Fm	Gas	4312	ACTIVE	39.104455	-80.491136
55	4704104920	Lewis	Charles Bailey	Dominion Energy Transmission, Inc.	Misc Sands-BNSN/BRLR	Gas	4579	ACTIVE	39.115176	-80.483845
56	4704104958	Lewis	Richard W Dunham	Dominion Energy Transmission, Inc.	Misc Sands-BNSN/BRLR	Gas	4449	ACTIVE	39.108761	-80.492720
57	4704105037	Lewis	Kenneth L Hunt	Dominion Energy Transmission, Inc.	Greenland Gap Fm	Gas	3561	ACTIVE	39.101975	-80.478771
58	4704105262	Lewis	Charles Bailey	Dominion Energy Transmission, Inc.	Weir	Gas	1776	ACTIVE	39.115179	-80.483972
59	4704105269	Lewis	Edwin Lee Bowyer II	Alliance Petroleum, Co., LLC	Greenland Gap Fm	Gas	4160	ACTIVE	39.092028	-80.477873
60	4704105338	Lewis	Fred A Balley	Dominion Energy Transmission, Inc.	Price Fm & equivs	Gas	1683	ACTIVE	39.113523	-80.479570
61	4704105368	Lewis	Edward Earl Garrett	Alliance Petroleum, Co., LLC	Greenland Gap Fm	Gas	4470	ACTIVE	39.093188	-80.488853
62	4704105371	Lewis	Scott A Carpenter	Dominion Energy Transmission, Inc.	Price Fm & equivs	Gas	1530	ACTIVE	39.108271	-80.483089
63	4704105378	Lewis	Charles F Bailey	Dominion Energy Transmission, Inc.	Price Fm & equivs	Gas	1777	ACTIVE	39.105497	-80.480063
64	4704105389	Lewis	Lee Matthew McWhorter	Alliance Petroleum, Co., LLC	Greenland Gap Fm	Gas	2244	ACTIVE	39.093854	-80.475522
65	4704105390	Lewis	Mary Lou Curry	Alliance Petroleum, Co., LLC	Greenland Gap Fm	Gas	7480	ACTIVE	39.092043	-80.481298
66	4704105391	Lewis	Mary Lou Curry	Alliance Petroleum, Co., LLC	Greenland Gap Fm	Gas	2531	ACTIVE	39.089187	-80.481436
67	4704105392	Lewis	Mary Lou Curry	Alliance Petroleum, Co., LLC	Greenland Gap Fm	Gas	2531	ACTIVE	39.086712	-80.480292
68	4704105408	Lewis	Deborah D Hunt	Dominion Energy Transmission, Inc.	Greenland Gap Fm	Gas	3386	ACTIVE	39.100004	-80.481411
69	4704105480	Lewis	WV University Board of Gov	Devonian Gas Production	Benson	Gas	4248	ACTIVE	39.089518	-80.471914

RECEIVED
 Office of Oil and Gas
 JUN 04 2021
 WV Department of
 Environmental Protection

SOURCE: WVGES DATASET (2017) and WVDEP WEBSITE AND FIELD SURVEYS

YELLOW DENOTES WELL WITH TVD > 4,500'

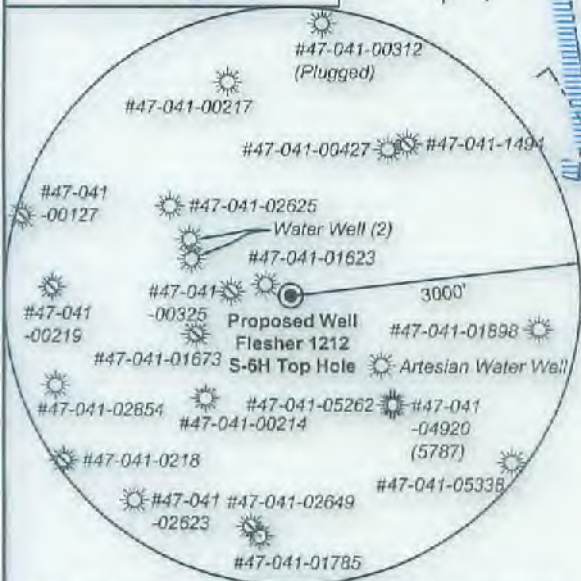
GREEN DENOTES SURVEYED WELLS



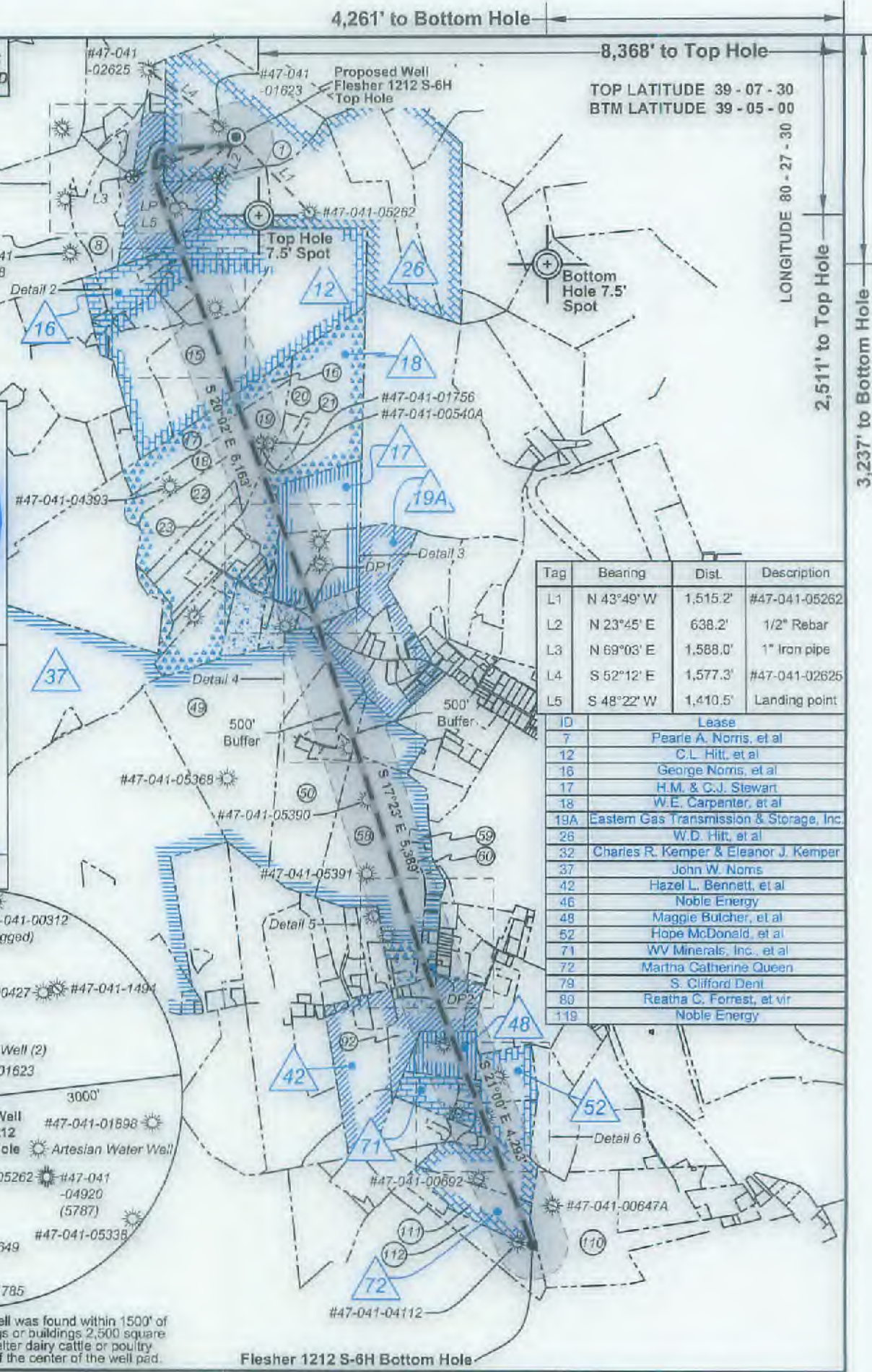
SEAL

I, the undersigned, hereby certify that this plat is correct to the best of my knowledge and belief and shows all the information required by law and the rules issued and prescribed by the Department of Environmental Protection.

Kevin S. James
Kevin S. James, P.S. 2305



Note: 2 water wells and 1 artesian well was found within 1500' of proposed well. No occupied dwellings or buildings 2,500 square feet or larger used to house or shelter dairy cattle or poultry husbandry are located within 625' of the center of the well pad.



Tag	Bearing	Dist.	Description
L1	N 43°49' W	1,515.2'	#47-041-05262
L2	N 23°45' E	638.2'	1/2" Rebar
L3	N 69°03' E	1,588.0'	1" Iron pipe
L4	S 52°12' E	1,577.3'	#47-041-02625
L5	S 48°22' W	1,410.5'	Landing point

ID	Lease
7	Pearle A. Norris, et al
12	C.L. Hitt, et al
16	George Noms, et al
17	H.M. & G.J. Stewart
18	W.E. Carpenter, et al
19A	Eastern Gas Transmission & Storage, Inc.
26	W.D. Hitt, et al
32	Charles R. Kemper & Eleanor J. Kemper
37	John W. Noms
42	Hazel L. Bennett, et al
46	Noble Energy
48	Maggie Butcher, et al
52	Hope McDonald, et al
71	WV Minerals, Inc., et al
72	Martha Catherine Queen
79	S. Clifford Dent
80	Reatha C. Forrest, et vir
119	Noble Energy

FILE NO: 156-36-12-U-F-19
DRAWING NO: Flesher 1212 S-6H Well Plat
SCALE: 1" = 2000'
MINIMUM DEGREE OF ACCURACY: Submeter
PROVEN SOURCE OF ELEVATION: CORS, Bridgeport, WV

STATE OF WEST VIRGINIA
DEPARTMENT OF ENVIRONMENTAL PROTECTION
OIL AND GAS DIVISION

DATE: May 28 2021
OPERATOR'S WELL NO. Flesher 1212 S-6H
API WELL NO
47 - 041 - 05714
STATE COUNTY PERMIT

WELL TYPE: OIL GAS LIQUID INJECTION WASTE DISPOSAL
(IF GAS) PRODUCTION: STORAGE DEEP SHALLOW

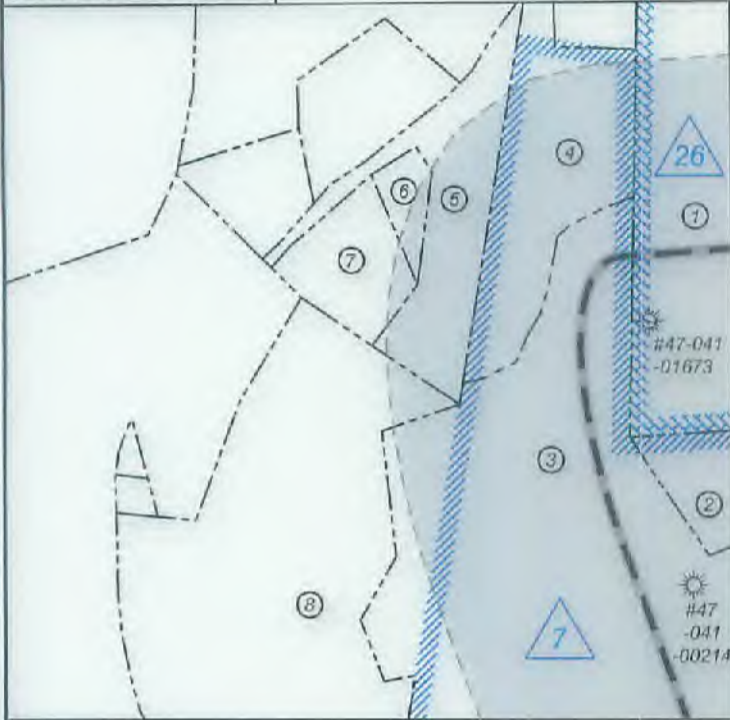
LOCATION: ELEVATION: 1,332.2' WATERSHED: Middle West Fork Creek
DISTRICT: Freemans Creek
SURFACE OWNER: H.G. Energy II Appalachia, LLC
ROYALTY OWNER: W.D. Hitt, et al, et al LEASE NO: ACREAGE: 210.00

PROPOSED WORK: DRILL CONVERT DRILL DEEPER FRACTURE OR STIMULATE PLUG OFF OLD FORMATION
 PERFORATE NEW FORMATION OTHER PHYSICAL CHANGE IN WELL (SPECIFY) LP, DP1, DP2, & BH MOD
 PLUG AND ABANDON CLEAN OUT AND REPLUG TARGET FORMATION: Marcellus Shale ESTIMATED DEPTH: 23,393' MD

WELL OPERATOR: HG Energy II Appalachia, LLC DESIGNATED AGENT: Diane C. White
ADDRESS: 5260 Dupont Road ADDRESS: 5260 Dupont Road
Parkersburg, WV 26101 Parkersburg, WV 26101



Detail 1 (Scale 1"=500')



Detail 3 (Scale 1"=500')



Detail 2 (Scale 1"=500')



Detail 4 (Scale 1"=500')



FILE NO: 156-36-12-U-F-19
DRAWING NO: Flesher 1212 S-6H Well Plat
SCALE: 1" = 2000'
MINIMUM DEGREE OF ACCURACY:
Submeter
PROVEN SOURCE OF ELEVATION:
CORS, Bridgeport, WV

STATE OF WEST VIRGINIA
DEPARTMENT OF ENVIRONMENTAL PROTECTION
OIL AND GAS DIVISION

DATE: May 28 2021
OPERATOR'S WELL NO. Flesher 1212 S-6H
API WELL NO
47 - 041 - 05714
STATE COUNTY PERMIT

WELL TYPE: OIL GAS LIQUID INJECTION WASTE DISPOSAL
(IF GAS) PRODUCTION: STORAGE DEEP SHALLOW

LOCATION: ELEVATION: 1,332.2' WATERSHED: Middle West Fork Creek

QUADRANGLE: Weston
COUNTY: Lincoln **07/16/2021**

DISTRICT: Freemans Creek

ACREAGE: 70.00

SURFACE OWNER: H.G. Energy II Appalachia, LLC

ROYALTY OWNER: W.D. Hitt, et al, et al

LEASE NO: _____ ACREAGE: 210.00

PROPOSED WORK: DRILL CONVERT DRILL DEEPER FRACTURE OR STIMULATE PLUG OFF OLD FORMATION
 PERFORATE NEW FORMATION OTHER PHYSICAL CHANGE IN WELL (SPECIFY) LP, DP1, DP2, & BH MOD

PLUG AND ABANDON CLEAN OUT AND REPLUG TARGET FORMATION: Marcellus Shale ESTIMATED DEPTH: 23,393' MD 6,913' TVD

WELL OPERATOR: HG Energy II Appalachia, LLC

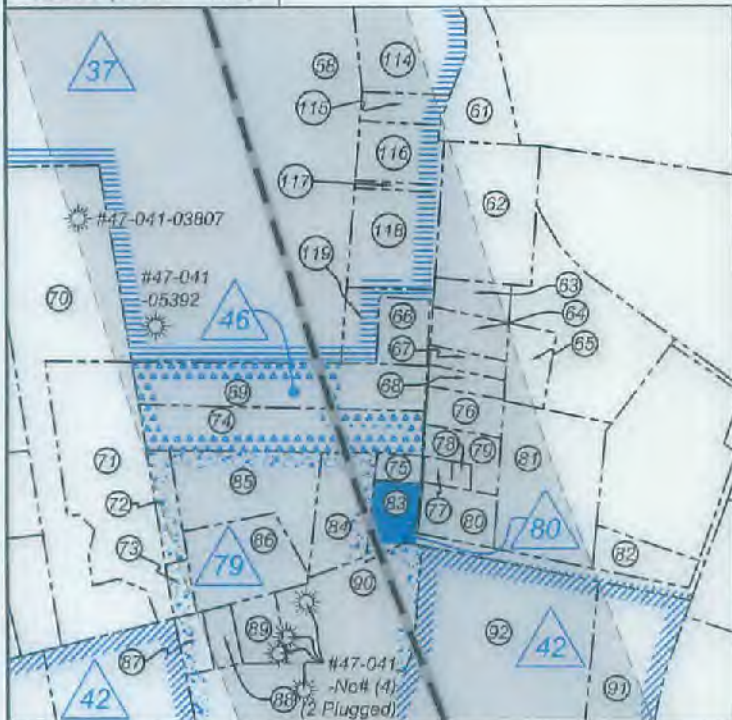
DESIGNATED AGENT: Diane C. White

ADDRESS: 5260 Dupont Road
Parkersburg, WV 26101

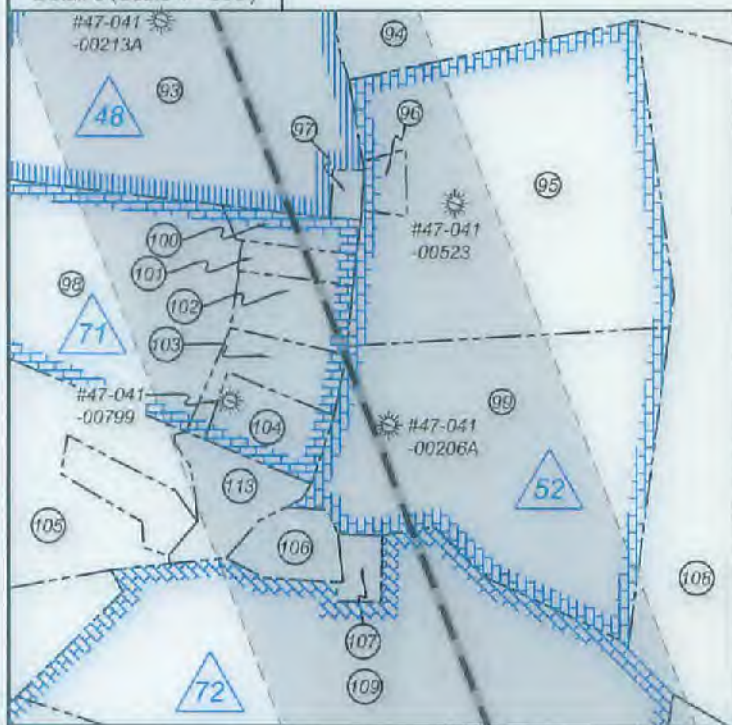
ADDRESS: 5260 Dupont Road
Parkersburg, WV 26101



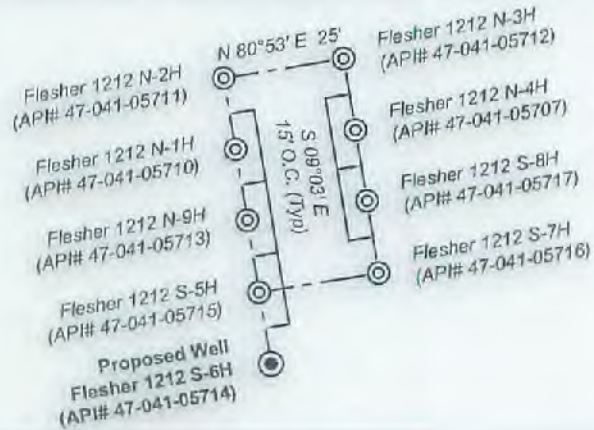
Detail 5 (Scale 1"=500')



Detail 6 (Scale 1"=500')



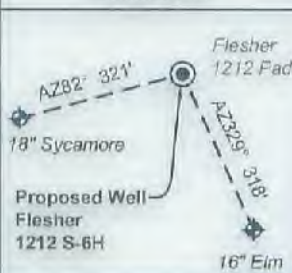
Wellhead Layout (NTS)



Notes: Well No. Flesher 1212 S-6H
West Virginia Coordinate System of 1927, North Zone
based upon Differential GPS Measurements.
Top Hole coordinates Bottom Hole coordinates
Latitude: 39°07'05.18" Latitude: 39°04'28.00"
Longitude: 80°29'16.21" Longitude: 80°28'24.04"
UTM Zone 17, NAD 1983
Top Hole Coordinates Bottom Hole Coordinates
N: 4,330,018.124m N: 4,325,180.279m
E: 544,291.444m E: 545,572.292m
Plat orientation and corner and well references are
based upon the grid north meridian. Well location
references are based upon the magnetic meridian.

Notes:
Well No. Flesher 1212 S-6H
UTM NAD 1983 (USSF)
Top Hole Coordinates
N: 14,206,067.78'
E: 1,785,729.51'
Landing Point Coordinates
N: 14,205,130.80'
E: 1,784,675.19'
Deflection Point Coordinates
N: 14,199,340.37'
E: 1,786,785.75'
Deflection Point Coordinates
N: 14,194,197.00'
E: 1,788,395.39'
Bottom Hole Coordinates
N: 14,190,195.62'
E: 1,789,931.76'

Well Location References
Not to Scale



Legend

- Proposed gas well
- Well Reference, as noted
- Monument, as noted
- Existing Well, as noted
- Digitized Well, as noted
- Creek or Drain
- Existing Road
- Surface boundary (approx.)
- Interior surface tracts (approx.)

FILE NO: 156-36-12-U-F-19
DRAWING NO: Flesher 1212 S-6H Well Plat
SCALE: 1" = 2000'
MINIMUM DEGREE OF ACCURACY:
Submeter
PROVEN SOURCE OF ELEVATION:
CORS, Bridgeport, WV

STATE OF WEST VIRGINIA
DEPARTMENT OF ENVIRONMENTAL PROTECTION
OIL AND GAS DIVISION

DATE: May 28 2021
OPERATOR'S WELL NO. Flesher 1212 S-6H
API WELL NO
47 - 041 - 05714
STATE COUNTY PERMIT

WELL TYPE: OIL GAS LIQUID INJECTION WASTE DISPOSAL
(IF GAS) PRODUCTION: STORAGE DEEP SHALLOW

LOCATION: ELEVATION: 1,332.2' WATERSHED: Middle West Fork Creek

QUADRANGLE: Weston
COUNTY: Logan

DISTRICT: Freemans Creek

ACREAGE: 70.00

SURFACE OWNER: H.G. Energy II Appalachia, LLC

ROYALTY OWNER: W.D. Hitt, et al, et al

LEASE NO: ACREAGE: 210.00

PROPOSED WORK: DRILL CONVERT DRILL DEEPER FRACTURE OR STIMULATE PLUG OFF OLD FORMATION
 PERFORATE NEW FORMATION OTHER PHYSICAL CHANGE IN WELL (SPECIFY) LP, DP1, DP2, & BH MOD

PLUG AND ABANDON CLEAN OUT AND REPLUG TARGET FORMATION: Marcellus Shale ESTIMATED DEPTH: 6,913' TVD 23,393' MD

WELL OPERATOR: HG Energy II Appalachia, LLC
ADDRESS: 5260 Dupont Road
Parkersburg, WV 26101

DESIGNATED AGENT: Diane C. White
ADDRESS: 5260 Dupont Road
Parkersburg, WV 26101

4,261' to Bottom Hole

8,368' to Top Hole

TOP LATITUDE 39 - 07 - 30
BTM LATITUDE 39 - 05 - 00

LONGITUDE 80 - 27 - 30

2,511' to Top Hole

3,237' to Bottom Hole

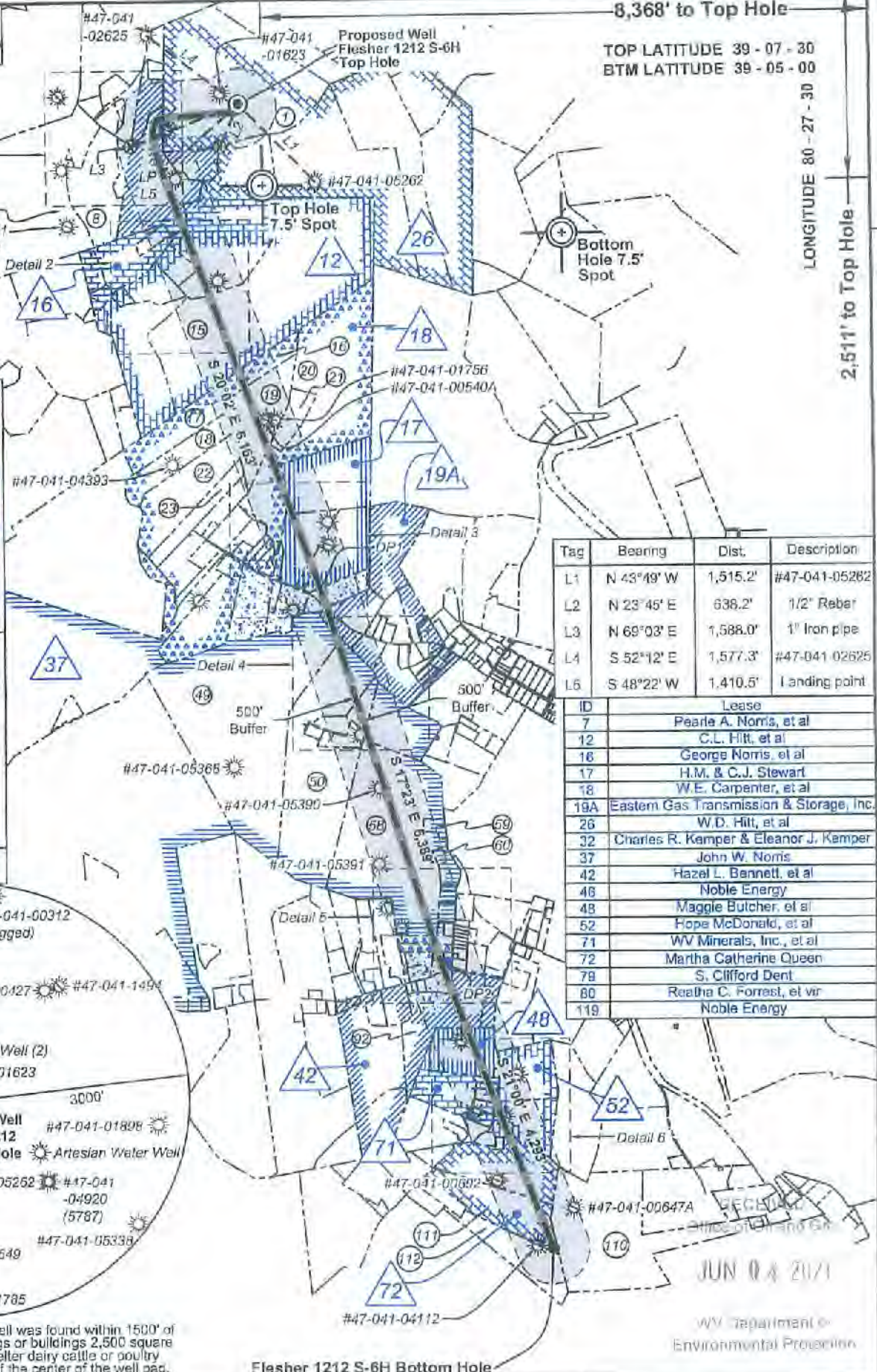
HG Energy II Appalachia, LLC
Well No. Flesher 1212 S-6H MOD

Page 1 of 4



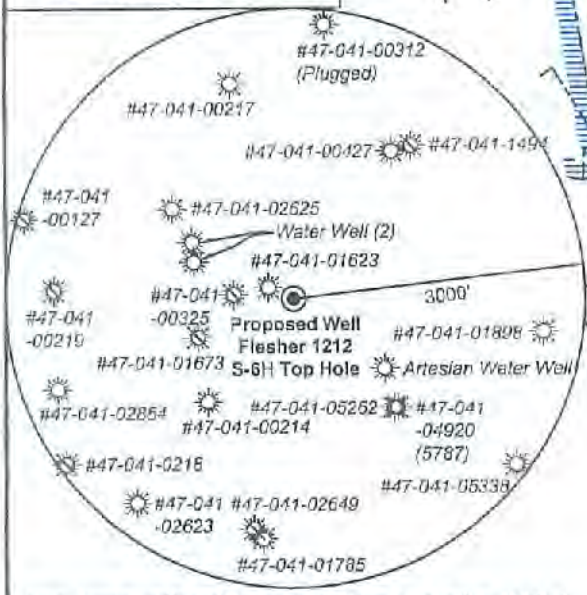
I, the undersigned, hereby certify that this plat is correct to the best of my knowledge and belief and shows all the information required by law and the rules issued and prescribed by the Department of Environmental Protection.

Kevin S. James
Kevin S. James, P.S. 2305



Tag	Bearing	Dist.	Description
L1	N 43°49' W	1,515.2'	#47-041-05262
L2	N 23°45' E	638.2'	1/2" Rebar
L3	N 69°03' E	1,588.0'	1" Iron pipe
L4	S 52°12' E	1,577.3'	#47-041 02625
L5	S 48°22' W	1,410.5'	Landing point

ID	Lease
7	Pearla A. Norris, et al
12	C.L. Hitt, et al
16	George Norris, et al
17	H.M. & C.J. Stewart
18	W.E. Carpenter, et al
19A	Eastern Gas Transmission & Storage, Inc.
26	W.D. Hitt, et al
32	Charles R. Kemper & Eleanor J. Kemper
37	John W. Norris
42	Hazel L. Bennett, et al
48	Noble Energy
48	Maggie Butcher, et al
52	Hope McDonald, et al
71	WV Minerals, Inc., et al
72	Martha Catherine Queen
78	S. Clifford Dent
80	Reatha C. Forrest, et al
119	Noble Energy



Note: 2 water wells and 1 artesian well was found within 1500' of proposed well. No occupied dwellings or buildings 2,500 square feet or larger used to house or shelter dairy cattle or poultry husbandry are located within 625' of the center of the well pad.

Flesher 1212 S-6H Bottom Hole

FILE NO: 156-36-12-U-F-19
DRAWING NO: Flesher 1212 S-6H Well Plat
SCALE: 1" = 2000'
MINIMUM DEGREE OF ACCURACY: Submeter
PROVEN SOURCE OF ELEVATION: CORS, Bridgeport, WV

STATE OF WEST VIRGINIA
DEPARTMENT OF ENVIRONMENTAL PROTECTION
OIL AND GAS DIVISION

DATE: May 28 2021
OPERATOR'S WELL NO. Flesher 1212 S-6H
API WELL NO
47 - 041 - 05714
STATE COUNTY PERMIT

WELL TYPE: OIL GAS LIQUID INJECTION WASTE DISPOSAL
(IF GAS) PRODUCTION: STORAGE DEEP SHALLOW
LOCATION: ELEVATION: 1,332.2' WATERSHED: Middle West Fork Creek
DISTRICT: Freemans Creek QUADRANGLE: Weston
SURFACE OWNER: H.G. Energy II Appalachia, LLC COUNTY: Putnam
ROYALTY OWNER: W.D. Hitt, et al, et al LEASE NO: ACREAGE: 210.00
PROPOSED WORK: DRILL CONVERT DRILL DEEPER FRACTURE OR STIMULATE PLUG OFF OLD FORMATION
 PERFORATE NEW FORMATION OTHER PHYSICAL CHANGE IN WELL (SPECIFY) LP, DP1, DP2, & BH MOD
 PLUG AND ABANDON CLEAN OUT AND REPLUG TARGET FORMATION: Marcellus Shale ESTIMATED DEPTH: 23,393' MD

WELL OPERATOR: HG Energy II Appalachia, LLC DESIGNATED AGENT: Diane C. White
ADDRESS: 5260 Dupont Road ADDRESS: 5260 Dupont Road
Parkersburg, WV 26101 Parkersburg, WV 26101

JUN 04 2021

WV Department of Environmental Protection

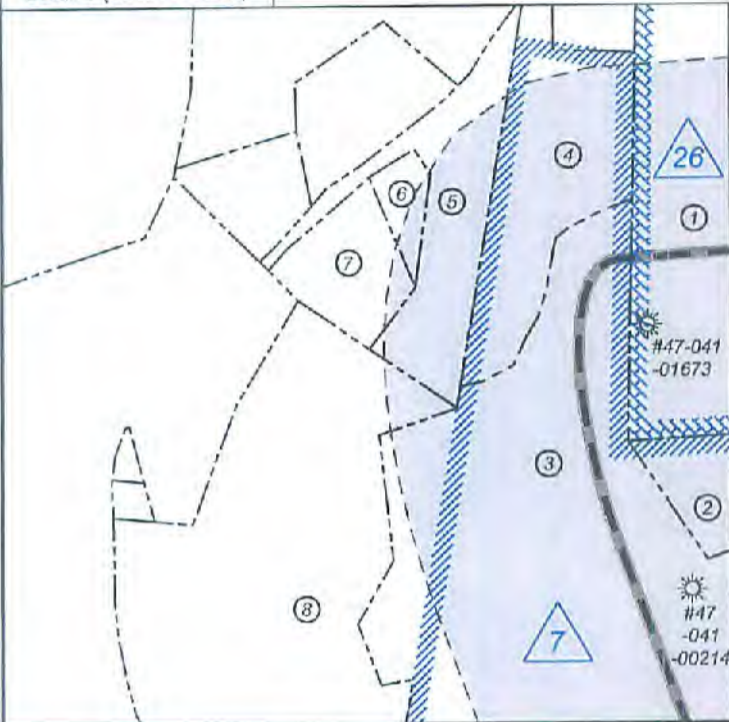
RECEIVED
Office of Oil and Gas

JUN 04 2021

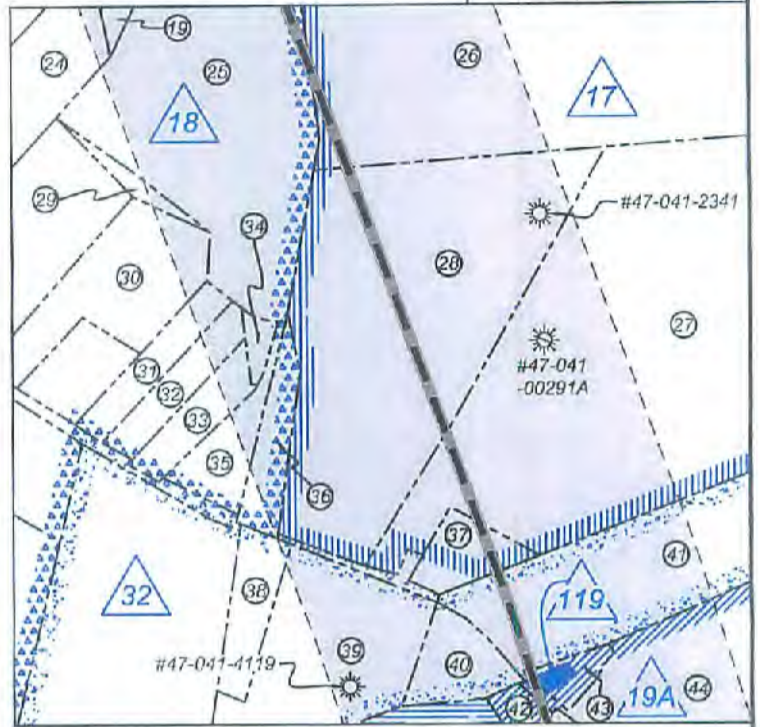
WV Department of
Environmental Protection



Detail 1 (Scale 1"=500')



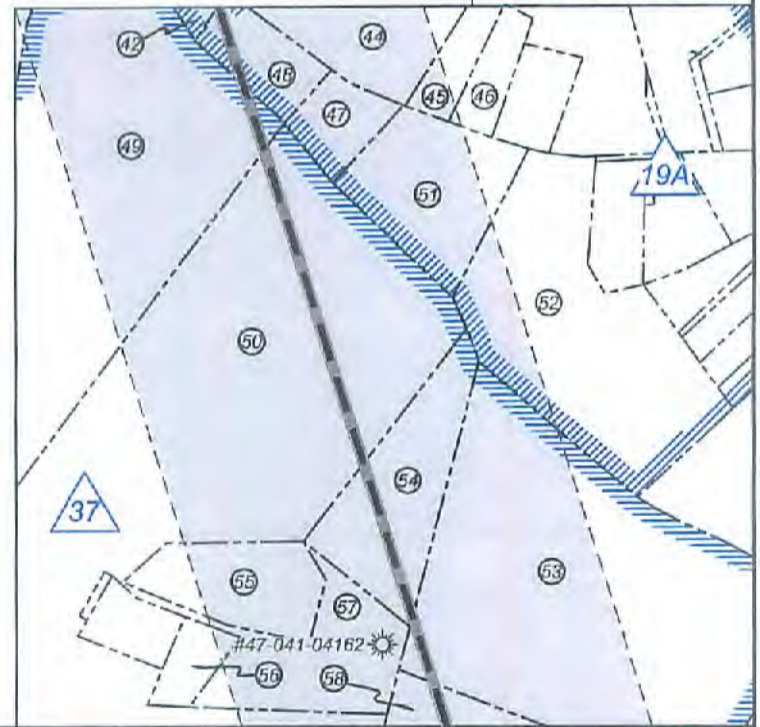
Detail 3 (Scale 1"=500')



Detail 2 (Scale 1"=500')



Detail 4 (Scale 1"=500')



FILE NO: 156-36-12-U-F-19
DRAWING NO: Flesher 1212 S-6H Well Plat
SCALE: 1" = 2000'
MINIMUM DEGREE OF ACCURACY:
Submeter
PROVEN SOURCE OF ELEVATION:
CORS, Bridgeport, WV

STATE OF WEST VIRGINIA
DEPARTMENT OF ENVIRONMENTAL PROTECTION
OIL AND GAS DIVISION



DATE: May 28 2021
OPERATOR'S WELL NO. Flesher 1212 S-6H
API WELL NO
47 - 041 - 05714
STATE COUNTY PERMIT

WELL TYPE: OIL GAS LIQUID INJECTION WASTE DISPOSAL
(IF GAS) PRODUCTION: STORAGE DEEP SHALLOW

LOCATION: ELEVATION: 1,332.2' WATERSHED: Middle West Fork Creek

QUADRANGLE: Weston
COUNTY: Lewis 07/16/2021

DISTRICT: Freemans Creek

SURFACE OWNER: H.G. Energy II Appalachia, LLC

ACREAGE: 70.00

ROYALTY OWNER: W.D. Hitt, et al, et al

LEASE NO: ACREAGE: 210.00

PROPOSED WORK: DRILL CONVERT DRILL DEEPER FRACTURE OR STIMULATE PLUG OFF OLD FORMATION
 PERFORATE NEW FORMATION OTHER PHYSICAL CHANGE IN WELL (SPECIFY) LP, DP1, DP2, & BH MOD

PLUG AND ABANDON CLEAN OUT AND REPLUG TARGET FORMATION: Marcellus Shale ESTIMATED DEPTH: 23,393' MD 6,913' TVD

WELL OPERATOR: HG Energy II Appalachia, LLC

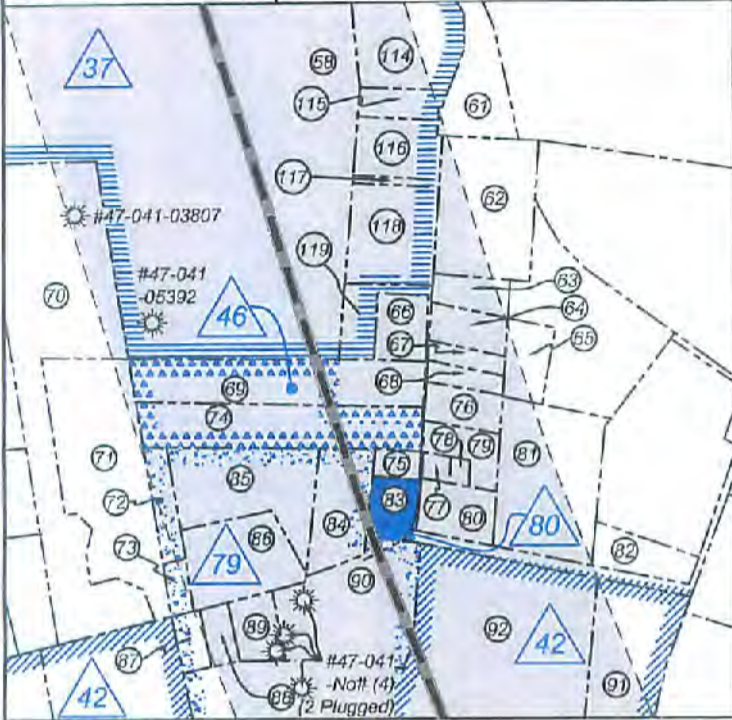
DESIGNATED AGENT: Diane C. White

ADDRESS: 5260 Dupont Road
Parkersburg, WV 26101

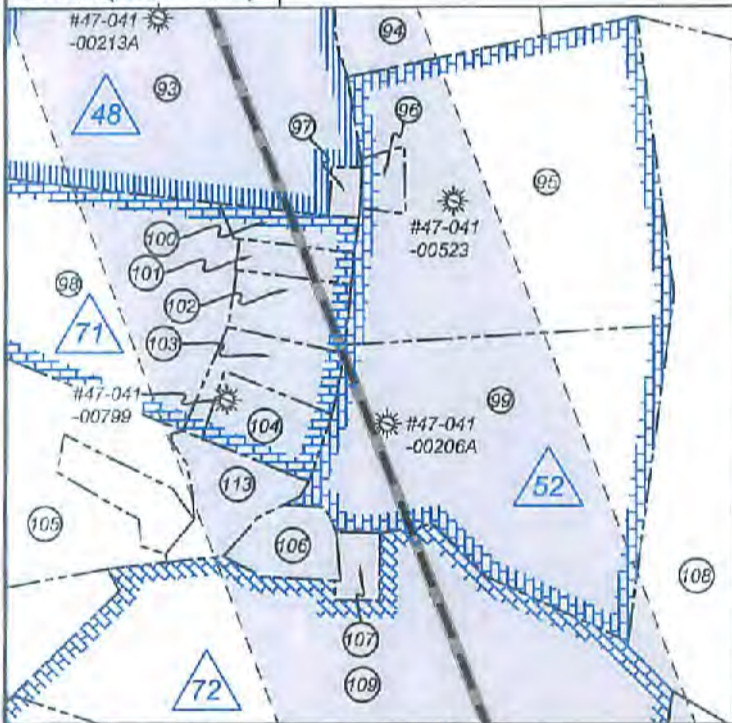
ADDRESS: 5260 Dupont Road
Parkersburg, WV 26101



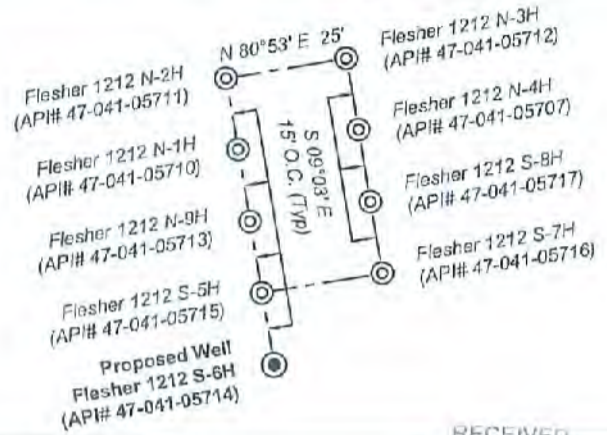
Detail 5 (Scale 1"=500')



Detail 6 (Scale 1"=500')



Wellhead Layout (NTS)



RECEIVED

Office of Oil and Gas

JUN 04 2021

WV Department of
Environmental Protection

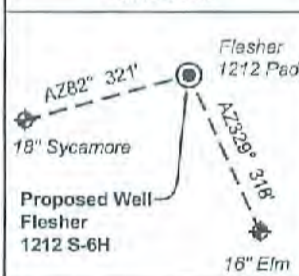
Notes:

Well No. Flesher 1212 S-6H
UTM NAD 1983 (USSF)

Top Hole Coordinates
N: 14,206,067.78'
E: 1,785,729.51'
Landing Point Coordinates
N: 14,205,130.80'
E: 1,784,675.19'
Deflection Point Coordinates
N: 14,199,340.37'
E: 1,786,785.75'
Deflection Point Coordinates
N: 14,194,197.00'
E: 1,788,395.39'
Bottom Hole Coordinates
N: 14,190,195.62'
E: 1,789,931.76'

Notes: Well No. Flesher 1212 S-6H
West Virginia Coordinate System of 1927, North Zone
based upon Differential GPS Measurements.
Top Hole coordinates Bottom Hole coordinates
Latitude: 39°07'05.18" Latitude: 39°04'28.00"
Longitude: 80°29'16.21" Longitude: 80°28'24.04"
UTM Zone 17, NAD 1983
Top Hole Coordinates Bottom Hole Coordinates
N: 4,330,018.124m N: 4,325,180.279m
E: 544,281.444m E: 545,572.292m
Plat orientation and corner and well references are
based upon the grid north meridian. Well location
references are based upon the magnetic meridian.

Well Location References
Not to Scale



Legend

- Proposed gas well
- Well Reference, as noted
- Monument, as noted
- Existing Well, as noted
- Digitized Well, as noted
- Creek or Drain
- Existing Road
- Surface boundary (approx.)
- Interior surface tracts (approx.)

FILE NO: 156-36-12-U-F-19
DRAWING NO: Flesher 1212 S-6H Well Plat
SCALE: 1" = 2000'
MINIMUM DEGREE OF ACCURACY:
Submeter
PROVEN SOURCE OF ELEVATION:
CORS, Bridgeport, WV

STATE OF WEST VIRGINIA
DEPARTMENT OF ENVIRONMENTAL PROTECTION
OIL AND GAS DIVISION



DATE: May 28 2021
OPERATOR'S WELL NO. Flesher 1212 S-6H
API WELL NO
47 - 041 - 05714
STATE COUNTY PERMIT

WELL TYPE: OIL GAS LIQUID INJECTION WASTE DISPOSAL
(IF GAS) PRODUCTION: STORAGE DEEP SHALLOW

LOCATION: ELEVATION: 1,332.2' WATERSHED: Middle West Fork Creek

QUADRANGLE: Weston

DISTRICT: Freemans Creek

COUNTY: Lewis

SURFACE OWNER: H.G. Energy II Appalachia, LLC

ACREAGE: 70.00

ROYALTY OWNER: W.D. Hitt, et al, et al

LEASE NO: ACREAGE: 210.00

PROPOSED WORK: DRILL CONVERT DRILL DEEPER FRACTURE OR STIMULATE PLUG OFF OLD FORMATION
 PERFORATE NEW FORMATION OTHER PHYSICAL CHANGE IN WELL (SPECIFY) LP, DP1, DP2, & BH MOD

PLUG AND ABANDON CLEAN OUT AND REPLUG TARGET FORMATION: Marcellus Shale ESTIMATED DEPTH: 23,393' MD 6,913' TVD

WELL OPERATOR: HG Energy II Appalachia, LLC

DESIGNATED AGENT: Diane C. White

ADDRESS: 5260 Dupont Road

ADDRESS: 5260 Dupont Road

Parkersburg, WV 26101

Parkersburg, WV 26101

WW-6A1
(5/13)

Operator's Well No. Flesher 1212 S-6H

**INFORMATION SUPPLIED UNDER WEST VIRGINIA CODE
Chapter 22, Article 6A, Section 5(a)(5)
IN LIEU OF FILING LEASE(S) AND OTHER CONTINUING CONTRACT(S)**

Under the oath required to make the verification on page 1 of this Notice and Application, I depose and say that I am the person who signed the Notice and Application for the Applicant, and that –

- (1) the tract of land is the same tract described in this Application, partly or wholly depicted in the accompanying plat, and described in the Construction and Reclamation Plan;
- (2) the parties and recordation data (if recorded) for lease(s) or other continuing contract(s) by which the Applicant claims the right to extract, produce or market the oil or gas are as follows:

Lease Name or Number	Grantor, Lessor, etc.	Grantee, Lessee, etc.	Royalty	Book/Page
-------------------------	-----------------------	-----------------------	---------	-----------

See Attached Sheets

RECEIVED
Office of Oil and Gas

JUN 04 2021

WV Department of
Environmental Protection

**Acknowledgement of Possible Permitting/Approval
In Addition to the Office of Oil and Gas**

The permit applicant for the proposed well work addressed in this application hereby acknowledges the possibility of the need for permits and/or approvals from local, state, or federal entities in addition to the DEP, Office of Oil and Gas, including but not limited to the following:

- WV Division of Water and Waste Management
- WV Division of Natural Resources WV Division of Highways
- U.S. Army Corps of Engineers
- U.S. Fish and Wildlife Service
- County Floodplain Coordinator

The applicant further acknowledges that any Office of Oil and Gas permit in no way overrides, replaces, or nullifies the need for other permits/approvals that may be necessary and further affirms that all needed permits/approvals should be acquired from the appropriate authority before the affected activity is initiated.

Well Operator: HG Energy II Appalachia, LLC
 By: Diane White *Diane White*
 Its: Accountant

HG Energy II Appalachia, LLC - 1212 S-6H LEASE CHAIN

4704105714

TRACT #	LEGACY LEASE NUMBER	TAX MAP	LEASE NUMBER	GRANTOR/LESSOR	GRANTEE/LESSEE	ROYALTY	DEED BOOK	PAGE
26	FK053270	03-006C-0045-0000 03-006C-0046-0000 03-006C-0053-0000 03-006C-0054-0000 03-007C-0007-0000 p/o 03-006C-0043-0000 p/o 03-006C-0043-0001 p/o 03-006C-0047-0000	Q100675000	W. D. HITT AND ALDA HITT, HIS WIFE; J. C. HITT AND DORA HITT, HIS WIFE; L.A. MCCARTY AND F. R. MCCARTY, HER HUSBAND; GEORGE W. NEELY AND GRACE M. NEELY, HIS WIFE	RESERVE GAS COMPANY	NOT LESS THAN 1/8	68	524
				RESERVE GAS COMPANY	HOPE NATURAL GAS COMPANY	CONFIRMATORY DEED	155	202
				HOPE NATURAL GAS COMPANY	CONSOLIDATED GAS SUPPLY CORPORATION	CONFIRMATORY DEED	294	89
				CONSOLIDATED GAS SUPPLY CORPORATION	CONSOLIDATED GAS TRANSMISSION CORPORATION	ASSIGNMENT	425	127
				CONSOLIDATED GAS TRANSMISSION CORPORATION	CNG TRANSMISSION CORPORATION	MERGER/NAME CHANGE	WVSOS	
				CNG TRANSMISSION CORPORATION	DOMINION TRANSMISSION, INC.	MERGER/NAME CHANGE	WVSOS	
				DOMINION TRANSMISSION, INC.	CNX GAS COMPANY LLC	MEMORANDUM FARMOUT AGREEMENT	672	154
				CNX GAS COMPANY LLC	NOBLE ENERGY, INC.	LIMITED PARTIAL ASSIGNMENT (50%)	684	57
				DOMINION TRANSMISSION, INC.	CNX GAS COMPANY LLC AND NOBLE ENERGY, INC.	PARTIAL ASSIGNMENT (32%)	712	848
				CNX GAS COMPANY LLC	NOBLE ENERGY, INC.	ASSIGNMENT	717	1
				NOBLE ENERGY, INC.	HG ENERGY II APPALACHIA, LLC	ASSIGNMENT	722	139
				DOMINION TRANSMISSION, INC.	DOMINION ENERGY TRANSMISSION, INC.	MERGER/NAME CHANGE	WVSOS	
				DOMINION ENERGY TRANSMISSION, INC.	HG ENERGY II APPALACHIA, LLC	SECOND AMENDMENT TO MEMORANDUM OF FARMOUT AGREEMENT	723	499
				DOMINION ENERGY TRANSMISSION, INC.	HG ENERGY II APPALACHIA, LLC	THIRD AMENDMENT TO MEMORANDUM OF FARMOUT AGREEMENT	734	558
				DOMINION ENERGY TRANSMISSION, INC.	HG ENERGY II APPALACHIA, LLC	ASSIGNMENT (68%)	736	220
7	FK064074	03-006C-0025-0000; 03-006C-0025-0001; P/O 03-006C-0023-0000; P/O 03-006C-0043-0000	Q100293000	PEARLE A. NORRIS AND EDNA N. PAUGH AND CHAS. S. PAUGH, HER HUSBAND	HOPE NATURAL GAS COMPANY	NOT LESS THAN 1/8	219	218
				HOPE NATURAL GAS COMPANY	CONSOLIDATED GAS SUPPLY CORPORATION	CONFIRMATORY DEED	294	89
				CONSOLIDATED GAS SUPPLY CORPORATION	CONSOLIDATED GAS TRANSMISSION CORPORATION	ASSIGNMENT	425	127
				CONSOLIDATED GAS TRANSMISSION CORPORATION	CNG TRANSMISSION CORPORATION	MERGER/NAME CHANGE	WVSOS	
				CNG TRANSMISSION CORPORATION	DOMINION TRANSMISSION, INC.	MERGER/NAME CHANGE	WVSOS	
				DOMINION TRANSMISSION, INC.	CNX GAS COMPANY LLC	MEMORANDUM OF FARMOUT AGREEMENT	672	154
				CNX GAS COMPANY LLC	NOBLE ENERGY, INC.	LIMITED PARTIAL ASSIGNMENT (50%)	684	57
				DOMINION TRANSMISSION, INC.	CNX GAS COMPANY LLC AND NOBLE ENERGY, INC.	PARTIAL ASSIGNMENT (32%)	712	848
				CNX GAS COMPANY LLC	NOBLE ENERGY, INC.	ASSIGNMENT	717	1
				NOBLE ENERGY, INC.	HG ENERGY II APPALACHIA, LLC	ASSIGNMENT	722	139
				NOBLE ENERGY, INC.	HG ENERGY II APPALACHIA, LLC	ASSIGNMENT	722	170
				DOMINION TRANSMISSION, INC.	DOMINION ENERGY TRANSMISSION, INC.	MERGER/NAME CHANGE	WVSOS	
				DOMINION ENERGY TRANSMISSION, INC.	HG ENERGY II APPALACHIA, LLC	SECOND AMENDMENT TO MEMORANDUM OF FARMOUT AGREEMENT	723	499
				DOMINION ENERGY TRANSMISSION, INC.	HG ENERGY II APPALACHIA, LLC	THIRD AMENDMENT TO MEMORANDUM OF FARMOUT AGREEMENT	734	558
				DOMINION ENERGY TRANSMISSION, INC.	HG ENERGY II APPALACHIA, LLC	ASSIGNMENT (68%)	736	220
16	FK053173	03-006C-0027-0001 03-006C-0027-0002 03-006C-0027-0003 03-006C-0027-0004 03-006C-0030-0000 p/o 03-006C-0043-0000 p/o 03-006C-0043-0001	Q100671000	GEORGE NORRIS AND LAURA B. NORRIS, HIS WIFE	SOUTH PENN OIL COMPANY	NOT LESS THAN 1/8	42	124
				SOUTH PENN OIL COMPANY	HOPE NATURAL GAS COMPANY	ASSIGNMENT	85	127
				HOPE NATURAL GAS COMPANY	CONSOLIDATED GAS SUPPLY CORPORATION	CONFIRMATORY DEED	294	89
				CONSOLIDATED GAS SUPPLY CORPORATION	CONSOLIDATED GAS TRANSMISSION CORPORATION	ASSIGNMENT	425	127
				CONSOLIDATED GAS TRANSMISSION CORPORATION	CNG TRANSMISSION CORPORATION	MERGER/NAME CHANGE	WVSOS	
				CNG TRANSMISSION CORPORATION	DOMINION TRANSMISSION, INC.	MERGER/NAME CHANGE	WVSOS	
				DOMINION TRANSMISSION, INC.	CNX GAS COMPANY LLC	MEMORANDUM OF FARMOUT AGREEMENT	672	154
				CNX GAS COMPANY LLC	NOBLE ENERGY, INC.	LIMITED PARTIAL ASSIGNMENT (50%)	684	57
				DOMINION TRANSMISSION, INC.	CNX GAS COMPANY LLC AND NOBLE ENERGY, INC.	PARTIAL ASSIGNMENT (32%)	712	848
				CNX GAS COMPANY LLC	NOBLE ENERGY, INC.	ASSIGNMENT	717	1
				NOBLE ENERGY, INC.	HG ENERGY II APPALACHIA, LLC	ASSIGNMENT	722	139
				NOBLE ENERGY, INC.	HG ENERGY II APPALACHIA, LLC	ASSIGNMENT	722	170
				DOMINION TRANSMISSION, INC.	DOMINION ENERGY TRANSMISSION, INC.	MERGER/NAME CHANGE	WVSOS	
				DOMINION ENERGY TRANSMISSION, INC.	HG ENERGY II APPALACHIA, LLC	SECOND AMENDMENT TO MEMORANDUM OF FARMOUT AGREEMENT	723	499
				DOMINION ENERGY TRANSMISSION, INC.	HG ENERGY II APPALACHIA, LLC	THIRD AMENDMENT TO MEMORANDUM OF FARMOUT AGREEMENT	734	558

RECEIVED
Office of Oil and Gas

JUN 04 2021

WV Department of
Environmental Protection

12	FK053269	03-006C-0028-0000 03-006C-0029-0000 03-006C-0032-0000 03-006C-0032-0001 p/o 03-006C-0031-0000 p/o 03-006C-0043-0000	Q100338000	DOMINION ENERGY TRANSMISSION, INC.	HG ENERGY II APPALACHIA, LLC	ASSIGNMENT (68%)	736	220
				C. L. HITT, B. J. HITT, S. A. HITT, ELIZA A. HITT, AND LUCY M. HITT	RESERVE GAS COMPANY	NOT LESS THAN 1/8	68	523
				RESERVE GAS COMPANY	HOPE NATURAL GAS COMPANY	CONFIRMATORY DEED	155	202
				HOPE NATURAL GAS COMPANY	CONSOLIDATED GAS SUPPLY CORPORATION	CONFIRMATORY DEED	294	89
				CONSOLIDATED GAS SUPPLY CORPORATION	CONSOLIDATED GAS TRANSMISSION CORPORATION	ASSIGNMENT	425	127
				CONSOLIDATED GAS TRANSMISSION CORPORATION	CNG TRANSMISSION CORPORATION	MERGER/NAME CHANGE	WVSOS	
				CNG TRANSMISSION CORPORATION	DOMINION TRANSMISSION, INC.	MERGER/NAME CHANGE	WVSOS	
				DOMINION TRANSMISSION, INC.	CNX GAS COMPANY LLC	MEMORANDUM OF FARMOUT AGREEMENT	672	154
				CNX GAS COMPANY LLC	NOBLE ENERGY, INC.	LIMITED PARTIAL ASSIGNMENT (50%)	684	57
				DOMINION TRANSMISSION, INC.	CNX GAS COMPANY LLC AND NOBLE ENERGY, INC.	PARTIAL ASSIGNMENT (32%)	712	848
				CNX GAS COMPANY LLC	NOBLE ENERGY, INC.	ASSIGNMENT	717	1
				NOBLE ENERGY, INC.	HG ENERGY II APPALACHIA, LLC	ASSIGNMENT	722	139
				NOBLE ENERGY, INC.	HG ENERGY II APPALACHIA, LLC	ASSIGNMENT	722	170
				DOMINION TRANSMISSION, INC.	DOMINION ENERGY TRANSMISSION, INC.	MERGER/NAME CHANGE	WVSOS	
DOMINION ENERGY TRANSMISSION, INC.	HG ENERGY II APPALACHIA, LLC	SECOND AMENDMENT TO MEMORANDUM OF FARMOUT AGREEMENT	723	499				
DOMINION ENERGY TRANSMISSION, INC.	HG ENERGY II APPALACHIA, LLC	THIRD AMENDMENT TO MEMORANDUM OF FARMOUT AGREEMENT	734	558				
DOMINION ENERGY TRANSMISSION, INC.	HG ENERGY II APPALACHIA, LLC	ASSIGNMENT (68%)	736	220				
18	FK064858	p/o 03-006C-0059-0000 03-006C-0036-0000 03-006C-0037-0000 03-006C-0038-0000 03-006C-0038-0001 03-006C-0040-0000 03-006C-0040-0001 03-006C-0041-0000 03-006C-0042-0000 03-006D-0024-0000 03-006D-0025-0000 03-006D-0025-0002 03-006D-0026-0000 03-006D-0026-0001 03-006D-0027-0001 03-006D-0028-0000 03-006D-0029-0000 03-006D-0029-0001 03-006D-0030-0000 03-006D-0030-0001 03-006D-0031-0000 03-006D-0032-0000 03-006D-0032-0001 03-006D-0033-0000 03-006D-0034-0000 03-006D-0034-0001 03-006D-0035-0000 03-006D-0035-0001	Q100600000	W. E. CARPENTER AND MONA E. CARPENTER, HIS WIFE; C. W. SHUTTS AND MARGARET SHUTTS, HIS WIFE, EACH IN THEIR OWN RIGHT; CREED L. SHUTTS AND MONA LEE SHUTTS, HIS WIFE, EACH IN THEIR OWN RIGHT; CREED L. SHUTTS AND MONA LEE SHUTTS, HIS WIFE; NINA G. ALLEN, WIDOW; VIRGINIA Y. G. MCMULLEN AND T. F. MCMULLEN, HER HUSBAND; EDWARD D. CARPENTER AND VICTORIA M. CARPENTER, HIS WIFE; ARTHUR D. CARPENTER AND GLORIA R. CARPENTER, HIS WIFE; AND STARK D. CARPENTER AND DAISY M. CARPENTER, HIS WIFE	HOPE NATURAL GAS COMPANY	NOT LESS THAN 1/8	224	248
				HOPE NATURAL GAS COMPANY	CONSOLIDATED GAS SUPPLY CORPORATION	CONFIRMATORY DEED	294	89
				CONSOLIDATED GAS SUPPLY CORPORATION	CONSOLIDATED GAS TRANSMISSION CORPORATION	ASSIGNMENT	425	127
				CONSOLIDATED GAS TRANSMISSION CORPORATION	CNG TRANSMISSION CORPORATION	MERGER/NAME CHANGE	WVSOS	
				CNG TRANSMISSION CORPORATION	DOMINION TRANSMISSION, INC.	MERGER/NAME CHANGE	WVSOS	
				DOMINION TRANSMISSION, INC.	CNX GAS COMPANY LLC	MEMORANDUM OF FARMOUT AGREEMENT	672	154
				DOMINION TRANSMISSION, INC.	CNX GAS COMPANY LLC AND NOBLE ENERGY, INC.	PARTIAL ASSIGNMENT (32%)	712	848
				CNX GAS COMPANY LLC	NOBLE ENERGY, INC.	ASSIGNMENT	717	1
				NOBLE ENERGY, INC.	HG ENERGY II APPALACHIA, LLC	ASSIGNMENT	722	139
				DOMINION TRANSMISSION, INC.	DOMINION ENERGY TRANSMISSION, INC.	MERGER/NAME CHANGE	WVSOS	
				DOMINION ENERGY TRANSMISSION, INC.	HG ENERGY II APPALACHIA, LLC	SECOND AMENDMENT TO MEMORANDUM OF FARMOUT AGREEMENT	723	499
				DOMINION ENERGY TRANSMISSION, INC.	HG ENERGY II APPALACHIA, LLC	THIRD AMENDMENT TO MEMORANDUM OF FARMOUT AGREEMENT	734	558
				DOMINION ENERGY TRANSMISSION, INC.	HG ENERGY II APPALACHIA, LLC	ASSIGNMENT (68%)	736	220
				17	FK053174	03-006D-0040-0000, 03-006D-0041-0000, 03-006D-0042-0000, 03-006C-0039-0000	Q101023000	H. M. STEWART AND C.J. STEWART, HIS WIFE
SOUTH PENN OIL COMPANY	RESERVE GAS COMPANY	ASSIGNMENT	79					237
RESERVE GAS COMPANY	HOPE NATURAL GAS COMPANY	CONFIRMATORY DEED	155					202
W. E. CARPENTER AND MONA CARPENTER, HIS WIFE; JESSE M. HOLT AND MAUDE HOLT, HIS WIFE	HOPE NATURAL GAS COMPANY	STORAGE GRANT	219					526
HOPE NATURAL GAS COMPANY	CONSOLIDATED GAS SUPPLY CORPORATION	CONFIRMATORY DEED	294					89
CONSOLIDATED GAS SUPPLY CORPORATION	CONSOLIDATED GAS TRANSMISSION CORPORATION	ASSIGNMENT	425					127
CONSOLIDATED GAS TRANSMISSION CORPORATION	CNG TRANSMISSION CORPORATION	MERGER/NAME CHANGE	WVSOS					
CNG TRANSMISSION CORPORATION	DOMINION TRANSMISSION, INC.	MERGER/NAME CHANGE	WVSOS					
DOMINION TRANSMISSION, INC.	CNX GAS COMPANY LLC	MEMORANDUM OF FARMOUT AGREEMENT	672					154
CNX GAS COMPANY LLC	NOBLE ENERGY, INC.	LIMITED PARTIAL ASSIGNMENT (50%)	684					57
DOMINION TRANSMISSION, INC.	CNX GAS COMPANY LLC AND NOBLE ENERGY, INC.	PARTIAL ASSIGNMENT (32%)	712					848
CNX GAS COMPANY LLC	NOBLE ENERGY, INC.	ASSIGNMENT	717					1
NOBLE ENERGY, INC.	HG ENERGY II APPALACHIA, LLC	ASSIGNMENT	722					139
NOBLE ENERGY, INC.	HG ENERGY II APPALACHIA, LLC	ASSIGNMENT	722					170
DOMINION TRANSMISSION, INC.	DOMINION ENERGY TRANSMISSION, INC.	MERGER/NAME CHANGE	WVSOS					
DOMINION ENERGY TRANSMISSION, INC.	HG ENERGY II APPALACHIA, LLC	SECOND AMENDMENT TO MEMORANDUM OF FARMOUT AGREEMENT	723	499				
DOMINION ENERGY TRANSMISSION, INC.	HG ENERGY II APPALACHIA, LLC	THIRD AMENDMENT TO MEMORANDUM OF FARMOUT AGREEMENT	734	558				

				DOMINION ENERGY TRANSMISSION, INC.	HG ENERGY II APPALACHIA, LLC	ASSIGNMENT (68%)	736	220
				CHARLES R. KEMPER AND ELEANOR JANE KEMPER, HUSBAND AND WIFE	HOPE NATURAL GAS COMPANY	NOT LESS THAN 1/8	286	665
				ORIS M. BUTCHER AND WILLIAM L. BUTCHER, HER HUSBAND; EULA G. KEISTER LOWTHER AND OREN C. LOWTHER, HER HUSBAND; MARK E. KEISTER AND ETHEL B. KEISTER, HIS WIFE; VERE BUTCHER AND A. S. BUTCHER, HER HUSBAND; VIRGIL W. BUTCHER AND BERNICE BUTCHER, HIS WIFE; LOTTIE L. COLLIER, A MARRIED WOMAN, THELMA BUTCHER AND BURL BUTCHER, HER HUSBAND	HOPE NATURAL GAS COMPANY	NOT LESS THAN 1/8	288	281
32	072750 072908	03-006D-0037-0000 03-006D-0038-0000 03-006D-0038-0001 03-006D-0044-0000 p/o 03-006D-0053-0000 03-006D-0054-0000	CNXDV011667	HOPE NATURAL GAS COMPANY	CONSOLIDATED GAS SUPPLY CORPORATION	CONFIRMATORY DEED	294	89
				CONSOLIDATED GAS SUPPLY CORPORATION	CONSOLIDATED GAS TRANSMISSION CORPORATION	ASSIGNMENT	425	127
				CONSOLIDATED GAS TRANSMISSION CORPORATION	CNG TRANSMISSION CORPORATION	MERGER/NAME CHANGE	WVSOS	
				CNG TRANSMISSION CORPORATION	DOMINION TRANSMISSION, INC.	MERGER/NAME CHANGE	WVSOS	
				DOMINION TRANSMISSION, INC.	CONSOL Energy Holdings LLC XVI	ASSIGNMENT	651	318
				DOMINION TRANSMISSION, INC.	CNX GAS COMPANY LLC	AMENDED ASSIGNMENT	658	715
				Consol Energy Holdings XVI	CNX GAS COMPANY LLC	MERGER/NAME CHANGE	1472	294
				CNX GAS COMPANY LLC	HG ENERGY II APPALACHIA, LLC	ASSIGNMENT	766	352
19A	52968	03-006D-0043-0000 03-006D-0045-0000 03-006D-0046-0000 03-006D-0047-0001 03-006D-0047-0002 03-006D-0047-0003 03-006D-0048-0000 03-006D-0049-0000 03-006D-0049-0001 03-006D-0050-0000 03-006D-0050-0001 03-006D-0050-0002 03-006D-0051-0000 03-006D-0051-0001 03-006D-0052-0000 03-0002-0015-0000 03-0002-0015-0001 03-0002-0015-0002 03-0002-0016-0000 03-0002-0016-0001 03-0002-0017-0000 thru 03-0002-0023-0000 03-0002-0023-0001 03-0002-0074-0000 03-0002-0074-0001	52968	EASTERN GAS TRANSMISSION AND STORAGE, INC, F/K/A/ DOMINION ENERGY TRANSMISSION, INC.	HG ENERGY II APPALACHIA, LLC	MINERAL DEED	766	935
119	N/A	03-006D-0053-0000	CNXDV011667	NOBLE ENERGY, INC.	HG ENERGY II APPALACHIA, LLC	MINERAL DEED	722	293
37	FEEHGI0040 FEEHGI0035	03-0006-0001-0000 03-0006-0027-0000 03-0006-0028 0000 03-0006-0028-0001 03-0006-0028-0002 03-006D-0021-0000 03-006D-0022-0000 03-006D-0022-0001 03-006D-0055-0000 thru 03-006D-0059-0000 03-006D-0059-0001 03-006D-0060-0000 03-006D-0061-0000 thru 03-006D-0066-0000 p/o 03-006D-0070-0000 03-006D-0096-0000 03-006D-0097-0000 03-006D-0098-0000 03-007D-0042-0000 03-007D-0042-0001	CNX - MISC 939	JOHN W NORRIS	SOUTH PENN OIL COMPANY	NOT LESS THAN 1/8	42	119
				SOUTH PENN OIL COMPANY	HOPE NATURAL GAS COMPANY	ASSIGNMENT	85	127
				HOPE NATURAL GAS COMPANY	RESERVE GAS COMPANY	ASSIGNMENT	79	370
				RESERVE GAS COMPANY	HOPE NATURAL GAS COMPANY	CONFIRMATORY DEED	155	202
				HOPE NATURAL GAS COMPANY	CONSOLIDATED GAS SUPPLY CORPORATION	CONFIRMATORY DEED	294	89
				CONSOLIDATED GAS SUPPLY CORPORATION	CONSOLIDATED GAS TRANSMISSION CORPORATION	ASSIGNMENT	425	127
				CONSOLIDATED GAS TRANSMISSION CORPORATION	CNG TRANSMISSION CORPORATION	MERGER/NAME CHANGE	WVSOS	
				CNG TRANSMISSION CORPORATION	DOMINION TRANSMISSION, INC.	MERGER/NAME CHANGE	WVSOS	
				DOMINION TRANSMISSION INC	CNX GAS COMPANY LLC	ASSIGNMENT	658	715
				CNX GAS COMPANY LLC	HG ENERGY II APPALACHIA, LLC	ASSIGNMENT	766	352
46	N/A	03-006D-0091-0000 03-006D-0091-0001 p/o 03-007D-0044-0000	CNXDV011662 FEE	NOBLE ENERGY, INC.	HG ENERGY II APPALACHIA, LLC	MINERAL DEED	722	293

RECEIVED
Office of Oil and Gas
JUN 04 2021
WV Department of
Environmental Protection

45	N/A	03-006D-0091-0000 03-006D-0091-0001 p/o 03-007D-0044-0000	CNXDV011665 FEE	NOBLE ENERGY, INC.	HG ENERGY II APPALACHIA, LLC	MINERAL DEED	722	293
79	N/A	03-006D-0089-0000 03-006D-0092-0000 03-006D-0092-0001 THRU 03-006D-0092-0006 p/o 03-006D-0093-0000 03-006D-0094-0000 p/o 03-0006-0009-0000	HGII01286, HGII01396, HGII01312, HGII01303, HGII01331, HGII01261, HGII01301, HGII01287, HGII01329, HGII01387, HGII01329, HGII01383, HGII01420, HGII01309, HGII01330, HGII01262, HGII01302, HGII01291,	S. CLIFFORD DENT	HG ENERGY II APPALACHIA, LLC	NOT LESS THAN 1/8	764	218
				AXIOM ENERGY LLC	HG ENERGY II APPALACHIA, LLC	NOT LESS THAN 1/8	766	420
				JANE ANN IRVINE	HG ENERGY II APPALACHIA, LLC	NOT LESS THAN 1/8	764	705
				JOE D POSEY	HG ENERGY II APPALACHIA, LLC	NOT LESS THAN 1/8	864	326
				David D Floyd	HG ENERGY II APPALACHIA, LLC	NOT LESS THAN 1/8	764	697
				CAROL JANE TENNEY	HG ENERGY II APPALACHIA, LLC	NOT LESS THAN 1/8	763	769
				LARRY D POSEY	HG ENERGY II APPALACHIA, LLC	NOT LESS THAN 1/8	764	328
				DONALD BUTCHER	HG ENERGY II APPALACHIA, LLC	NOT LESS THAN 1/8	764	226
				Virgie D Butcher	HG ENERGY II APPALACHIA, LLC	NOT LESS THAN 1/8	764	699
				CHARLES B DOLLISON	HG ENERGY II APPALACHIA, LLC	NOT LESS THAN 1/8	765	693
				MICHAEL L THOMAS	HG ENERGY II APPALACHIA, LLC	NOT LESS THAN 1/8	766	715
				MIKE ROSS INC	HG ENERGY II APPALACHIA, LLC	NOT LESS THAN 1/8	764	332
				Mia Petrey Burr	HG ENERGY II APPALACHIA, LLC	NOT LESS THAN 1/8	764	695
				JILL LEA CLEAENGER BROGAN & MARK A BROGAN	HG ENERGY II APPALACHIA, LLC	NOT LESS THAN 1/8	763	771
				GARY D POSEY	HG ENERGY II APPALACHIA, LLC	NOT LESS THAN 1/8	764	324
				WACO OIL & GAS CO INC	HG ENERGY II APPALACHIA, LLC	NOT LESS THAN 1/8	763	777
				Duane D. Carpenter	HG ENERGY II APPALACHIA, LLC	NOT LESS THAN 1/8	765	590
80	TBD	03-0006-0009-0000	TBD	Reatha C. Forrest	HG ENERGY II APPALACHIA, LLC	NOT LESS THAN 1/8	770	872
42	N/A	03-006D-0046-0000 03-006D-0086-0000 03-006D-0088-0000 etal	CNX080265	HAZEL L. BENNETT ET AL	CONSOLIDATED GAS SUPPLY CORPORATION	NOT LESS THAN 1/8	321	262
				CONSOLIDATED GAS SUPPLY CORPORATION	CONSOLIDATED GAS TRANSMISSION CORPORATION	ASSIGNMENT	425	127
				CONSOLIDATED GAS TRANSMISSION CORPORATION	CNG TRANSMISSION CORPORATION	MERGER/NAME CHANGE	WVSOS	
				CNG TRANSMISSION CORPORATION	DOMINION TRANSMISSION, INC.	MERGER/NAME CHANGE	9	628
				DOMINION TRANSMISSION, INC.	CONSOL ENERGY HOLDINGS LLC XVI	ASSIGNMENT	651	318
				CONSOL ENERGY HOLDINGS LLC XVI	CONSOL GAS COMPANY	MERGER/NAME CHANGE	9	471
				CONSOL GAS COMPANY	CNX GAS COMPANY LLC	MERGER/NAME CHANGE	9	471
				CNX GAS COMPANY LLC	NOBLE ENERGY, INC.	LIMITED PARTIAL ASSIGNMENT (50%)	659	521
				CNX GAS COMPANY LLC	NOBLE ENERGY, INC.	ASSIGNMENT	717	1
				NOBLE ENERGY, INC.	HG ENERGY II APPALACHIA, LLC	ASSIGNMENT	722	170
48	N/A	03-007D-0017-0000	CNX081963	MAGGIE C. BUTCHER, WIDOW; AND JOHN WESLEY BUTCHER AND	CONSOLIDATED GAS SUPPLY CORPORATION	NOT LESS THAN 1/8	328	65
				CONSOLIDATED GAS SUPPLY CORPORATION	CONSOLIDATED GAS TRANSMISSION CORPORATION	ASSIGNMENT	425	127
				CONSOLIDATED GAS TRANSMISSION CORPORATION	CNG TRANSMISSION CORPORATION	MERGER/NAME CHANGE	WVSOS	
				CNG TRANSMISSION CORPORATION	DOMINION TRANSMISSION, INC.	MERGER/NAME CHANGE	9	628
				DOMINION TRANSMISSION, INC.	CONSOL ENERGY HOLDINGS LLC XVI	ASSIGNMENT	651	318
				CONSOL ENERGY HOLDINGS LLC XVI	CONSOL GAS COMPANY	MERGER/NAME CHANGE	9	471
				CONSOL GAS COMPANY	CNX GAS COMPANY LLC	MERGER/NAME CHANGE	9	471
				CNX GAS COMPANY LLC	NOBLE ENERGY, INC.	LIMITED PARTIAL ASSIGNMENT (50%)	659	521
				CNX GAS COMPANY LLC	NOBLE ENERGY, INC.	ASSIGNMENT	717	1
				NOBLE ENERGY, INC.	HG ENERGY II APPALACHIA, LLC	ASSIGNMENT	722	170
71	N/A	03-007E-0001-0000 03-007E-0001-0001 03-007E-0001-0002	HGII01351, HGII01408, HGII01574	WV Minerals, Inc.	HG ENERGY II APPALACHIA, LLC	NOT LESS THAN 1/8	766	377
				Mike Ross, Inc.	HG ENERGY II APPALACHIA, LLC	NOT LESS THAN 1/8	765	697
				Waco Oil & Gas	HG ENERGY II APPALACHIA, LLC	NOT LESS THAN 1/8	768	783
52	CNX079416	03-007E-0002-0000 03-007E-0070-0000 03-007E-0071-0000	CNX079416	HOPE MCDONALD AND HAZEL G. JONES	CONSOLIDATED GAS SUPPLY CORPORATION	NOT LESS THAN 1/8	316	356
				HOPE MCDONALD AND HAZEL G. JONES	CONSOLIDATED GAS SUPPLY CORPORATION	NOT LESS THAN 1/8	316	539
				CONSOLIDATED GAS SUPPLY CORPORATION	CONSOLIDATED GAS TRANSMISSION CORPORATION	ASSIGNMENT	425	127
				CONSOLIDATED GAS TRANSMISSION CORPORATION	CNG TRANSMISSION CORPORATION	MERGER/NAME CHANGE	WVSOS	
				CNG TRANSMISSION CORPORATION	DOMINION TRANSMISSION, INC.	MERGER/NAME CHANGE	WVSOS	
				DOMINION TRANSMISSION, INC.	CONSOL ENERGY HOLDINGS XVI	ASSIGNMENT	651	318
				CONSOL ENERGY HOLDINGS XVI	CONSOL GAS COMPANY	MERGER/NAME CHANGE	9	471
				CONSOL GAS COMPANY	CNX GAS COMPANY	MERGER/NAME CHANGE	9	471
				CNX GAS COMPANY LLC	NOBLE ENERGY, INC.	LIMITED PARTIAL ASSIGNMENT (50%)	659	521
				CNX GAS COMPANY LLC	NOBLE ENERGY, INC.	ASSIGNMENT	717	1
NOBLE ENERGY, INC.	HG ENERGY II APPALACHIA, LLC	ASSIGNMENT	722	170				
72	N/A	03-007E-0005-0000 03-007E-0006-0000 03-007E-0006-0001 03-007E-0006-0002	HGII01299, HGII01313, HGII01323, HGII01655	Martha Catherine Queen (Life Estate)				
				Debra Kay Carroll (Remainderman)	HG ENERGY II APPALACHIA, LLC	NOT LESS THAN 1/8	764	703
				Steven Preston Queen (Remainderman)	HG ENERGY II APPALACHIA, LLC	NOT LESS THAN 1/8	764	330

RECEIVED
Office of Oil and Gas
JUN 04 2021
WV Department of
Environmental Protection