



---

west virginia department of environmental protection

---

Office of Oil and Gas  
601 57<sup>th</sup> Street, S.E.  
Charleston, WV 25304  
(304) 926-0450  
fax: (304) 926-0452

Harold D. Ward, Cabinet Secretary  
[www.dep.wv.gov](http://www.dep.wv.gov)

Monday, June 7, 2021  
PERMIT MODIFICATION APPROVAL  
Horizontal 6A / New Drill

HG ENERGY II APPALACHIA, LLC  
5260 DUPONT ROAD  
PARKERSBURG, WV 26101

Re: Permit Modification Approval for FLESHER 1212 S-5H  
47-041-05715-00-00

**Lateral Extension, 6333' to 13860'. Updated Lease Chain.**

HG ENERGY II APPALACHIA, LLC

The Office of Oil and Gas has reviewed the attached permit modification for the above referenced permit. The attached modification has been approved and well work may begin. Please be reminded that the oil and gas inspector is to be notified twenty-four (24) hours before permitted well work is commenced.

If there are any questions, please feel free to contact me at (304) 926- 0450.

A blue ink signature of James A. Martin, written in a cursive style.

James A. Martin  
Chief

Operator's Well Number: FLESHER 1212 S-5H  
Farm Name: H. G. ENERGY II APPALACHIA, LLC  
U.S. WELL NUMBER: 47-041-05715-00-00  
Horizontal 6A New Drill  
Date Modification Issued: 06/07/2021

Promoting a healthy environment.

06/11/2021

STATE OF WEST VIRGINIA  
DEPARTMENT OF ENVIRONMENTAL PROTECTION, OFFICE OF OIL AND GAS  
WELL WORK PERMIT APPLICATION

RECEIVED  
Office of Oil and Gas  
MAY 27 2021

WV Department of  
Environmental Protection

1) Well Operator: HG Energy II Appalachia, L.P. 494519932 Lewis Freeman Weston  
Operator ID County District Quadrangle

2) Operator's Well Number: Flesher 1212 S-5H Well Pad Name: Flesher 1212

3) Farm Name/Surface Owner: Flesher Public Road Access: SR19 to Kincheloe Run Rd to Valley Chapel Rd

4) Elevation, current ground: 1338' Elevation, proposed post-construction: 1332'

5) Well Type (a) Gas  Oil  Underground Storage   
Other

(b) If Gas Shallow  Deep   
Horizontal

*SDew*  
*5/21/2021*

6) Existing Pad: Yes or No No

7) Proposed Target Formation(s), Depth(s), Anticipated Thickness and Expected Pressure(s):  
Marcellus at 6845'/6927' and 82' in thickness. Anticipated pressure at 4314#.

8) Proposed Total Vertical Depth: 6913'

9) Formation at Total Vertical Depth: Marcellus

10) Proposed Total Measured Depth: 22102'

11) Proposed Horizontal Leg Length: 13860'

12) Approximate Fresh Water Strata Depths: 105', 273', 302'

13) Method to Determine Fresh Water Depths: Nearest offset well data, (47-041-5338, 0218)

14) Approximate Saltwater Depths: 1028' (Nearest offset well data, 47-041-1673)

15) Approximate Coal Seam Depths: 420', 525' 830' (Surface casing is being extended to cover the coal in the DTI Storage Field)

16) Approximate Depth to Possible Void (coal mine, karst, other): None

17) Does Proposed well location contain coal seams directly overlying or adjacent to an active mine? Yes  No

(a) If Yes, provide Mine Info: Name: \_\_\_\_\_  
Depth: \_\_\_\_\_  
Seam: \_\_\_\_\_  
Owner: \_\_\_\_\_

18)

**CASING AND TUBING PROGRAM**

TYPE	Size (in)	New or Used	Grade	Weight per ft. (lb/ft)	FOOTAGE: For Drilling (ft)	INTERVALS: Left in Well (ft)	CEMENT: Fill-up (Cu. Ft.)/CTS
Conductor	30"	New	LS	157.5	120'	120'	Drilled In
Fresh Water/Coal	20"	NEW	J-55	94	1000'	1000'	CTS
Intermediate 1	13 3/8"	NEW	J-55 BTC	68	2100'	2100'	CTS
Intermediate 2	9 5/8"	NEW	J-55 BTC	40	2900'	2900'	CTS
Production	5 1/2"	NEW	P-110 HP	23	22102'	22102'	CTS
Tubing							
Liners							

RECEIVED  
Office of Oil and Gas  
CDW  
MAY 27 2021  
5121

TYPE	Size (in)	Wellbore Diameter (in)	Wall Thickness (in)	Burst Pressure (psi)	Anticipated Max. Internal Pressure (psi)	Cement Type	Cement Yield (cu. ft./k)
Conductor	30"	30"	.500				Drilled In
Fresh Water/Coal	20"	26"	.438	2110	1200	Type 1, Class A	40 % excess yield = 1.20, CTS
Intermediate 1	13 3/8"	17 1/2"	.480	3450		Type 1/Class A	Lead 40% excess, Tail 0% excess
Intermediate 2	9 5/8"	12 1/4"	.395	3950		Type 1/Class A	Lead 40% excess, Tail 0% Excess
Production	5 1/2"	8 1/2"	.415	16240	12500	Type 1/Class A	20% excess yield = 1.15, tail yield 1.04
Tubing							
Liners							

WV Department of Environmental Protection

**PACKERS**

Kind:				
Sizes:				
Depths Set:				

WW-6B  
(10/14)

API NO. 47- \_\_\_\_\_  
OPERATOR WELL NO. Flesher 1212 S-5H  
Well Pad Name: Flesher 1212

19) Describe proposed well work, including the drilling and plugging back of any pilot hole:

Drill the vertical depth to the Marcellus at an estimated total vertical depth of approximately 6913 feet. Drill horizontal leg to estimated 13,860' lateral length, 22,102' TMD. Hydraulically fracture stimulate and be capable of producing from the Marcellus Formation. Should we encounter an unanticipated void in the coal, we will install a minimum of 20' of casing below the void but not more than 100' below the void, set a basket and grout to surface. We plan to run an ACP above the Gantz/Dominion Storage interval to aid in sealing off and isolating the storage interval.

20) Describe fracturing/stimulating methods in detail, including anticipated max pressure and max rate:

The stimulation will be completed with multiple stages divided over the lateral length of the well. Stage spacing is dependent upon engineering design. Slickwater fracturing technique will be utilized on each stage using sand, water, and chemicals. See attached list. Maximum pressure not to exceed 12,500 psi.

21) Total Area to be disturbed, including roads, stockpile area, pits, etc., (acres): 33.17 acres

22) Area to be disturbed for well pad only, less access road (acres): 6.84 acres

23) Describe centralizer placement for each casing string:

No centralizers will be used with conductor casing.  
Freshwater/Coal - centralizer every 3 joints to surface.  
Intermediate 1 - Bow Spring on every joint, will also be running ACP for isolating storage zone  
Intermediate 2 - Bow Spring on first 2 joints then every third joint to 100' from surface.  
Production - Run 1 spiral centralizer every 5 joints from the top of the curve to surface. Run 1 spiral centralizer every 3 joints from the 1st 5.5' long joint to the top of the curve.

RECEIVED  
Office of Oil and Gas

MAY 27 2021

WV Department of  
Environmental Protection

24) Describe all cement additives associated with each cement type:

Conductor -N/A, Casing to be drilled in w/ Dual Rotary Rig.  
Fresh Water/Coal - 15.8 ppg PNE-1 + 3% bwoc CaCl, 40% Excess Yield = 1.20, CTS  
Intermediate 1 - Lead: 15.4 ppg PNE-1 + 2.5% bwoc CaCl, 40% Excess / Tail: 15.9 ppg PNE-1 + 2.5% bwoc CaCl zero% Excess, CTS  
Intermediate 2 - Lead: 15.4 ppg PNE-1 + 2.5% bwoc CaCl, 40% Excess, Tail: 15.9 ppg PNE-1 + 2.5% bwoc CaCl, zero% Excess, CTS  
Production - Lead: 14.5 ppg POZ:PNE-1 + 0.3% bwoc R3 + 1% bwoc EC1 + 0.75 gal/sk FP13L + 0.3% bwoc MPA170, Tail: 14.8 ppg PNE-1 + 0.35% bwoc R3 + 0.75 gal/sk FP13L + 50% bwoc ASCA1 + 0.5% bwoc MPA170 20% Excess, Lead Yield=1.19, Tail Yield=1.94, CTS

25) Proposed borehole conditioning procedures:

Conductor - Ensure the hole is clean at TD.  
Fresh Water/Coal - Once casing is at setting depth, circulate a minimum of one hole volume with Fresh Water prior to pumping cement.  
Intermediate 1 - Once casing is at setting depth, Circulate and condition at TD. Circulate a minimum of one hole volume prior to pumping cement.  
Intermediate 2 - Once casing is at setting depth, Circulate and condition mud at TD. Circulate a minimum of one hole volume prior to pumping cement.  
Production - Once on bottom/TD with casing, circulate at max allowable pump rate for at least 2x bottoms up, or until returns and pump pressures indicate the hole is clean. Circulate a minimum of one hole volume prior to pumping cement.

\*Note: Attach additional sheets as needed.



1212 S-5H  
Marcellus Shale Horizontal  
Lewis County, WV

		1212 S-5H SHL					14206082.59N 1785727.12E				
Ground Elevation	1332.2'		1212 S-5H LP					14204620.07N 1783264.82E			
Azm	160.014°		1212 S-5H BHL					14191599.36N 1788000.45E			

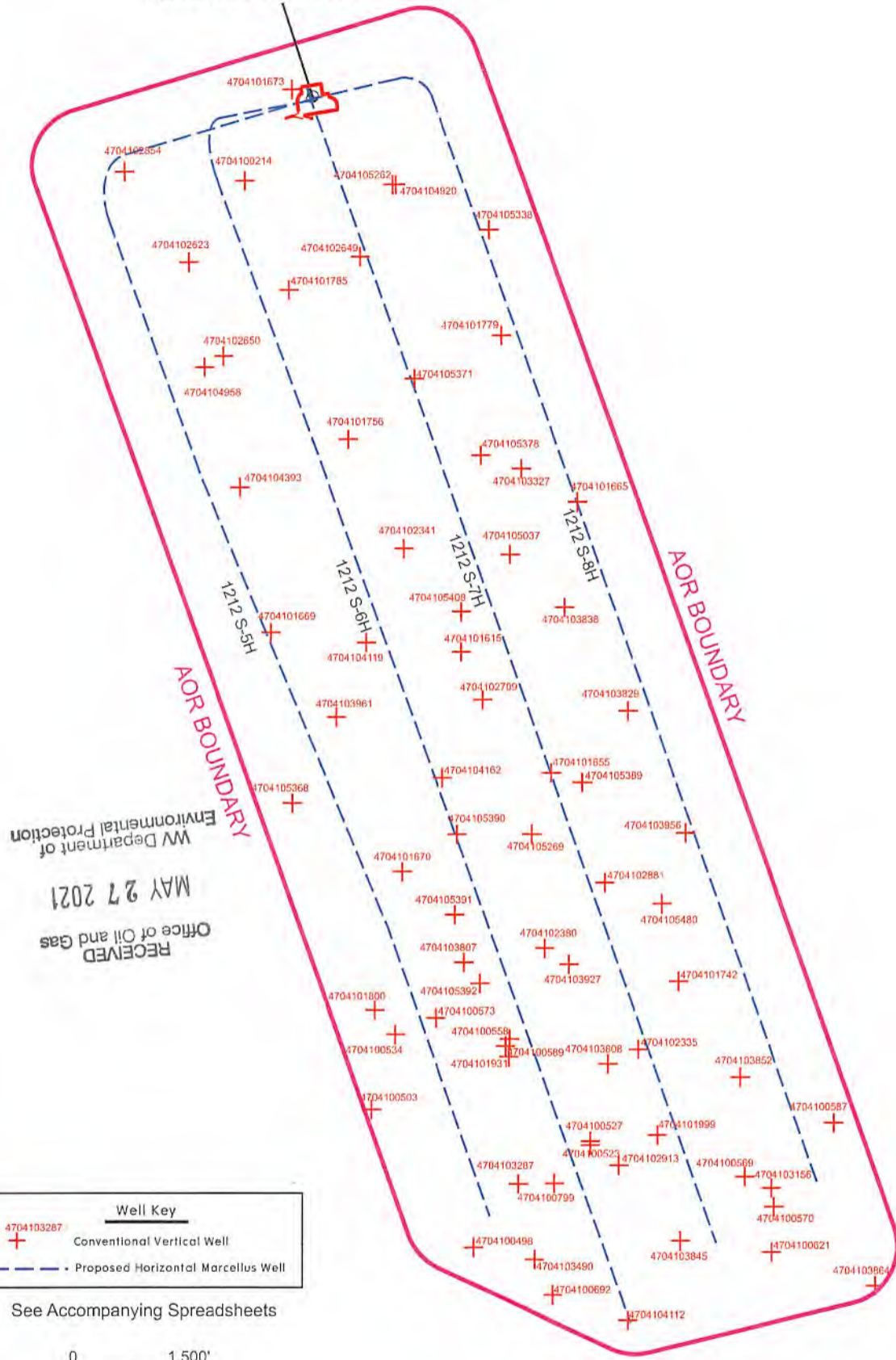
WELLBORE DIAGRAM	HOLE	CASING	GEOLOGY	TOP	BASE	MUD	CEMENT	CENTRALIZERS	CONDITIONING	COMMENTS
	30"	30" 157.5# LS	Conductor	0	120	AIR	N/A, Casing to be drilled in w/ Dual Rotary Rig	N/A	Ensure the hole is clean at TD.	Conductor casing = 0.5" wall thickness
	26"	20" 94# J-55	Fresh Water	0	273	AIR	15.6 ppg PNE-1 + 3% bwoc CaCl 40% Excess Yield=1.20 / CTS	Centralized every 3 joints to surface	Once casing is at setting depth, circulate a minimum of one hole volume with Fresh Water prior to pumping cement.	Surface casing = 0.438" wall thickness Burst=2110 psi
			Kittaning Coal	987	992					
			Fresh Water Protection	0	1000					
	17.5"	13-3/8" 68# J-55 BTC	Big Lime	1548	1613	AIR / KCL - Salt Polymer	Lead: 15.4 ppg PNE-1 + 2.5% bwoc CaCl 40% Excess / Tail: 15.9 ppg PNE-1 + 2.5% bwoc CaCl zero% Excess. CTS	Bow Spring on every joint <i>*will also be running ACP for isolating storage zone*</i>	Once casing is at setting depth, Circulate and condition at TD. Circulate a minimum of one hole volume prior to pumping cement.	Intermediate casing = 0.480" wall thickness Burst=3450 psi
			Injun / Gantz (Storage)	1613 / 1898	1718 / 1958					
			Intermediate 1	0	2100					
	12.25"	9-5/8" 40# J-55 BTC	Fifty / Thirty Foot	2008 / 2105	2033 / 2128	AIR / KCL - Salt Polymer	Lead: 15.4 ppg PNE-1 + 2.5% bwoc CaCl 40% Excess / Tail: 15.9 ppg PNE-1 + 2.5% bwoc CaCl zero% Excess. CTS	Bow Spring on first 2 joints then every third joint to 100' form surface	Once casing is at setting depth, Circulate and condition mud at TD. Circulate a minimum of one hole volume prior to pumping cement.	Intermediate casing = 0.395" wall thickness Burst=3950 psi
			Gordon Stray / Gordon	2128 / 2198	2198 / 2288					
			5th Sand	2374	2416					
			Bayard Sand	2450	2480					
	8.75" Vertical	8.5" Curve 8.5" Lateral WV Department of Environmental Protection MAY 27 2021 RECEIVED Office of Oil and Gas	Speechley	3078	3089	AIR / 9.0ppg SOBMB	Lead: 14.5 ppg POZ:PNE-1 + 0.3% bwoc R3 + 1% bwoc EC1 + 0.75 gal/sk FP13L + 0.3% bwoc MPA170 Tail: 14.8 ppg PNE-1 + 0.35% bwoc R3 + 0.75 gal/sk FP13L + 50% bwoc ASCA1 + 0.5% bwoc MPA170 20% Excess Lead Yield=1.19 Tail Yield=1.94 CTS	Run 1 spiral centralizer every 5 joints from the top of the curve to surface.	Once on bottom/TD with casing, circulate at max allowable pump rate for at least 2x bottoms up, or until returns and pump pressures indicate the hole is clean. Circulate a minimum of one hole volume prior to pumping cement.	Production casing = 0.415" wall thickness Burst=16240 psi Note:Actual centralizer schedules may be changed due to hole conditions
			Balltown	3278	3350					
			Benson	4370	4382					
	Rhinestreet		6256	6445	11.5ppg-12.5ppg SOBMB					
Cashaqua	6445		6526							
Middlesex	6526		6625							
West River	6625		6660	11.5ppg-12.5ppg SOBMB						
Burkett	6660		6751							
Jully Limestone	6751		6815							
Hamilton	6815		6753	11.5ppg-12.5ppg SOBMB						
Marcellus	6845	6927								
TMD / TVD (Production)	22102	6913								
Onondaga	6927									

LP @ 6913' TVD / 8242' MD      8.5" Hole - Cemented Long String      +/-13860' Lateral      TD @ +/-6913' TVD +/-22102' MD

X=centralizers



FLESHER 1212 PAD

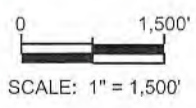


RECEIVED  
Office of Oil and Gas  
MAY 27 2021  
WV Department of  
Environmental Protection

**Well Key**

- 4704103287 + Conventional Vertical Well
- - - Proposed Horizontal Marcellus Well

See Accompanying Spreadsheets



DATA SOURCES  
WVGES Data Set - 2017; WVDEP Website

Area of Review for:  
**FLESHER 1212 SOUTH UNIT**  
Proposed 1212 S-5H    Proposed 1212 S-6H  
Proposed 1212 S-7H    Proposed 1212 S-8H

HG ENERGY, II APPALACHIA, LLC  
5260 DuPont Road, Parkersburg, WV 26101



Freeman's Creek District, Lewis County, W.Va.

## EXISTING WELLS LOCATED WITHIN THE AREA OF REVIEW FOR:

## FLESHER 1212 SOUTH UNIT AND PROPOSED WELLS S-5H, S-6H, S-7H &amp; S-8H

CT	API	COUNTY	FARM	OPERATOR NAME	FORMATION NAME	WELL TYPE	TVD	STATUS	LATITUDE	LONGITUDE
1	4704100214	Lewis	Geo Norris	Dominion Energy Transmission, Inc.	Hampshire Grp	Storage	2275	ACTIVE	39.115382	-80.490758
2	4704100498	Lewis	L Bailey 1	Deran Resources, Inc.	Up Devonian	Gas	2211	ACTIVE	39.077335	-80.480659
3	4704100503	Lewis	J J Bailey 2	Geo Energy, LLC	Price Fm & equivs	Gas w/ Oil Show	1385	ACTIVE	39.082266	-80.485313
4	4704100523	Lewis	Hope McDonald et al 1	Hays & Company	Price Fm & equivs	Gas w/ Oil Show	1750	PLUGGED	39.080961	-80.475265
5	4704100527	Lewis	B B Butcher 1	Lippizan Petroleum, Inc.	Price Fm & equivs	Gas w/ Oil Show	1410	ACTIVE	39.081106	-80.475265
6	4704100534	Lewis	Georg Dean 2	Geo Energy, LLC	Price Fm & equivs	Gas	1381	ACTIVE	39.084922	-80.484197
7	4704100558	Lewis	Doyle Butcher et al 2	Lippizan Petroleum, Inc.	Price Fm & equivs	Gas	1364	ACTIVE	39.084632	-80.479545
8	4704100569	Lewis	W W Chapman 1	Clem Energy, LLC	Unkown	Gas	-	ABANDONED	39.079798	-80.468192
9	4704100570	Lewis	W W Chapman 1	Law, David W.	Price Fm & equivs	Gas	1363	ABANDONED	39.079511	-80.466333
10	4704100573	Lewis	Clete Butcher et al 1	Bower, Hall and Wetzal	Price Fm & equivs	Gas	1441	PLUGGED	39.085502	-80.482337
11	4704100587	Lewis	Clay Maxwell Jr 1	Cohen, Henry	Big Injun (Grnbr)	Gas w/ Oil Show	1368	PLUGGED	39.081686	-80.464101
12	4704100589	Lewis	Doyle Vutcher 3	Law, David W.	Conemaugh Group	Dry w/ Gas Show	435	PLUGGED	39.084342	-80.479173
13	4704100621	Lewis	W W Riggs 1	Tower Service Company	Price Fm & equivs	Gas	1410	PLUGGED	39.077105	-80.466986
14	4704100799	Lewis	Carl Harrison 1	Bagwell & Trader	Price Fm & equivs	Gas	1360	ABANDONED	39.079613	-80.476936
15	4704101615	Lewis	Sophia Butcher	Dominion Energy Transmission, Inc.	Benson	Gas	4210	ACTIVE	39.098539	-80.481047
16	4704101655	Lewis	Sophia Butcher	Alliance Petroleum, Co., LLC	Greenland Gap Fm	Gas	4120	ACTIVE	39.094203	-80.476943
17	4704101665	Lewis	Charles F Bailey	Dominion Energy Transmission, Inc.	Greenland Gap Fm	Gas	4250	ACTIVE	39.103826	-80.475644
18	4704101669	Lewis	Charles I Bailey	Dominion Energy Transmission, Inc.	Greenland Gap Fm	Gas	4110	ACTIVE	39.099278	-80.489786
19	4704101670	Lewis	J W Norris	Alliance Petroleum, Co., LLC	Benson	Gas	4425	ACTIVE	39.090722	-80.483827
20	4704101673	Lewis	Cecil I Dempsey	Dominion Energy Transmission, Inc.	Greenland Gap Fm	Gas	4509	ACTIVE	39.118627	-80.488538
21	4704101742	Lewis	WV University Board of Gov	Alliance Petroleum, Co., LLC	Benson	Gas	4205	ACTIVE	39.086743	-80.471172
22	4704101756	Lewis	W E Carpenter	Dominion Energy Transmission, Inc.	Benson	Gas	4220	ACTIVE	39.106120	-80.486154
23	4704101779	Lewis	C F Bailey	Dominion Energy Transmission, Inc.	Benson	Gas	4446	ACTIVE	39.109755	-80.479062
24	4704101785	Lewis	C L Hitt	Dominion Energy Transmission, Inc.	Benson	Gas	4440	ACTIVE	39.111471	-80.488801
25	4704101800	Lewis	George W Dean Jr	Greylock Conventional, LLC	Benson	Gas	4305	ACTIVE	39.085792	-80.485128
26	4704101931	Lewis	Doyle Butcher 3	Lippizan Petroleum, Inc.	Benson	Gas	4163	ACTIVE	39.084052	-80.479917
27	4704101999	Lewis	Granville Butcher	Mountain, LLC	Fifth	Gas	4436	ACTIVE	39.081302	-80.472195
28	4704102335	Lewis	G Butcher	Alliance Petroleum, Co., LLC	Hampshire Grp	Gas	2575	ACTIVE	39.084342	-80.473033
29	4704102341	Lewis	Edna Brown	Dominion Energy Transmission, Inc.	Greenland Gap Fm	Gas	4280	ACTIVE	39.102228	-80.483644
30	4704102380	Lewis	Burt Keister	Alliance Petroleum, Co., LLC	Hampshire Grp	Gas	2000	ACTIVE	39.087967	-80.477313
31	4704102623	Lewis	Geo Norris	Dominion Energy Transmission, Inc.	Unkown	Storage	-	ACTIVE	39.112510	-80.493384
32	4704102649	Lewis	George Norris	Dominion Energy Transmission, Inc.	Unkown	Storage	-	ACTIVE	39.112620	-80.485511
33	4704102650	Lewis	Ira L. Queen	Dominion Energy Transmission, Inc.	Unkown	Storage	-	ACTIVE	39.109140	-80.491838
34	4704102709	Lewis	Sophia Butcher	Consolidated Gas Supply Corp.	Unkown	not available	-	ABANDONED	39.096803	-80.480078

OFFICE OF THE COMMISSIONER OF REVENUE  
 RECEIVED GAS  
 MAY 27 2021  
 MW Department for the  
 Environmental Protection

35	4704102854	Lewis	J S Norris	Dominion Energy Transmission, Inc.	not available	Storage	-	ACTIVE	39.115783	-80.496273
36	4704102881	Lewis	WVU Board of Governors	Alliance Petroleum, Co., LLC	Greenland Gap Fm	Gas	4250	ACTIVE	39.090287	-80.474523
37	4704102913	Lewis	John J Oldaker III	Jackson Fuel Corporation	Benson	Gas	4384	ACTIVE	39.080236	-80.473962
38	4704103156	Lewis	John F Wyant 1	Clem Energy, LLC	Benson	Gas	5757	ACTIVE	39.078351	-80.466333
39	4704103287	Lewis	Michael F Tierney Jr et al	Alliance Petroleum, Co., LLC	Brallier	Gas	5891	ACTIVE	39.079584	-80.478590
40	4704103327	Lewis	Rizpah B Carpenter	Dominion Energy Transmission, Inc.	Hamshire Grp	Gas	2380	PLUGGED	39.105009	-80.478216
41	4704103490	Lewis	Martha Queen 1-A	Prince Petroleum, Inc.	Benson	Gas	4287	ABANDONED	39.076900	-80.477868
42	4704103807	Lewis	Martha Carpenter	Alliance Petroleum, Co., LLC	Brallier	Gas	6050	ACTIVE	39.087478	-80.481020
43	4704103808	Lewis	Amy B Dent	Alliance Petroleum, Co., LLC	Brallier	Gas	5980	ACTIVE	39.084487	-80.474149
44	4704103829	Lewis	David Hamrick	Alliance Petroleum, Co., LLC	Brallier	Gas	5791	ACTIVE	39.096668	-80.473222
45	4704103838	Lewis	Charles F. Bailey	Dominion Energy Transmission, Inc.	Benson	Gas	4314	ACTIVE	39.100088	-80.476278
46	4704103845	Lewis	Alva Butcher	Alliance Petroleum, Co., LLC	Benson	Gas	4984	ACTIVE	39.077626	-80.470798
47	4704103852	Lewis	Patricia Hall	Alliance Petroleum, Co., LLC	Benson	Gas	4264	ACTIVE	39.083327	-80.468381
48	4704103864	Lewis	Vivian Thompson 1	Alliance Petroleum, Co., LLC	Benson	Gas	4225	ACTIVE	39.075885	-80.462240
49	4704103927	Lewis	Word of Life Christians	Diversified Resources, Inc.	Benson	Gas	4170	ACTIVE	39.087387	-80.476197
50	4704103956	Lewis	WV Board of Control	Devonian Gas Production, Inc.	Greenland Gap Fm	Gas w/ Oil Show	4230	ACTIVE	39.092028	-80.470801
51	4704103961	Lewis	John Norris	Enervest Operating, LLC	Benson	Gas	4280	ACTIVE	39.096233	-80.486807
52	4704104119	Lewis	Patricia Jo Beeson 1	Alliance Petroleum, Co., LLC	Greenland Gap Fm	Gas	4190	ACTIVE	39.098896	-80.485399
53	4704104162	Lewis	Michael L/Judy K Huntz	Berry Energy, Inc.	Greenland Gap Fm	Gas	4210	ACTIVE	39.094058	-80.481968
54	4704104393	Lewis	Richard D Carpenter	Dominion Energy Transmission, Inc.	Greenland Gap Fm	Gas	4312	ACTIVE	39.104455	-80.491136
55	4704104920	Lewis	Charles Bailey	Dominion Energy Transmission, Inc.	Misc Sands-BNSN/BRLR	Gas	4579	ACTIVE	39.115176	-80.483845
56	4704104958	Lewis	Richard W Dunham	Dominion Energy Transmission, Inc.	Misc Sands-BNSN/BRLR	Gas	4449	ACTIVE	39.108761	-80.492720
57	4704105037	Lewis	Kenneth L Hunt	Dominion Energy Transmission, Inc.	Greenland Gap Fm	Gas	3561	ACTIVE	39.101975	-80.478771
58	4704105262	Lewis	Charles Bailey	Dominion Energy Transmission, Inc.	Weir	Gas	1776	ACTIVE	39.115179	-80.483972
59	4704105269	Lewis	Edwin Lee Bowyer II	Alliance Petroleum, Co., LLC	Greenland Gap Fm	Gas	4160	ACTIVE	39.092028	-80.477873
60	4704105338	Lewis	Fred A Bailey	Dominion Energy Transmission, Inc.	Price Fm & equivs	Gas	1683	ACTIVE	39.113523	-80.479570
61	4704105368	Lewis	Edward Earl Garrett	Alliance Petroleum, Co., LLC	Greenland Gap Fm	Gas	4470	ACTIVE	39.093188	-80.488853
62	4704105371	Lewis	Scott A Carpenter	Dominion Energy Transmission, Inc.	Price Fm & equivs	Gas	1530	ACTIVE	39.108271	-80.483089
63	4704105378	Lewis	Charles F Bailey	Dominion Energy Transmission, Inc.	Price Fm & equivs	Gas	1777	ACTIVE	39.105497	-80.480063
64	4704105389	Lewis	Lee Matthew McWhorter	Alliance Petroleum, Co., LLC	Greenland Gap Fm	Gas	2244	ACTIVE	39.093854	-80.475522
65	4704105390	Lewis	Mary Lou Curry	Alliance Petroleum, Co., LLC	Greenland Gap Fm	Gas	2480	ACTIVE	39.092043	-80.481298
66	4704105391	Lewis	Mary Lou Curry	Alliance Petroleum, Co., LLC	Greenland Gap Fm	Gas	2531	ACTIVE	39.089187	-80.481436
67	4704105392	Lewis	Mary Lou Curry	Alliance Petroleum, Co., LLC	Greenland Gap Fm	Gas	2531	ACTIVE	39.086712	-80.480292
68	4704105408	Lewis	Deborah D Hunt	Dominion Energy Transmission, Inc.	Greenland Gap Fm	Gas	3386	ACTIVE	39.100004	-80.481411
69	4704105480	Lewis	WV University Board of Gov	Devonian Gas Production	Benson	Gas	4248	ACTIVE	39.089518	-80.471914

SOURCE: WVGES DATASET (2017) and WVDEP WEBSITE AND FIELD SURVEYS

YELLOW DENOTES WELL WITH TVD &gt; 4,500'

GREEN DENOTES SURVEYED WELLS



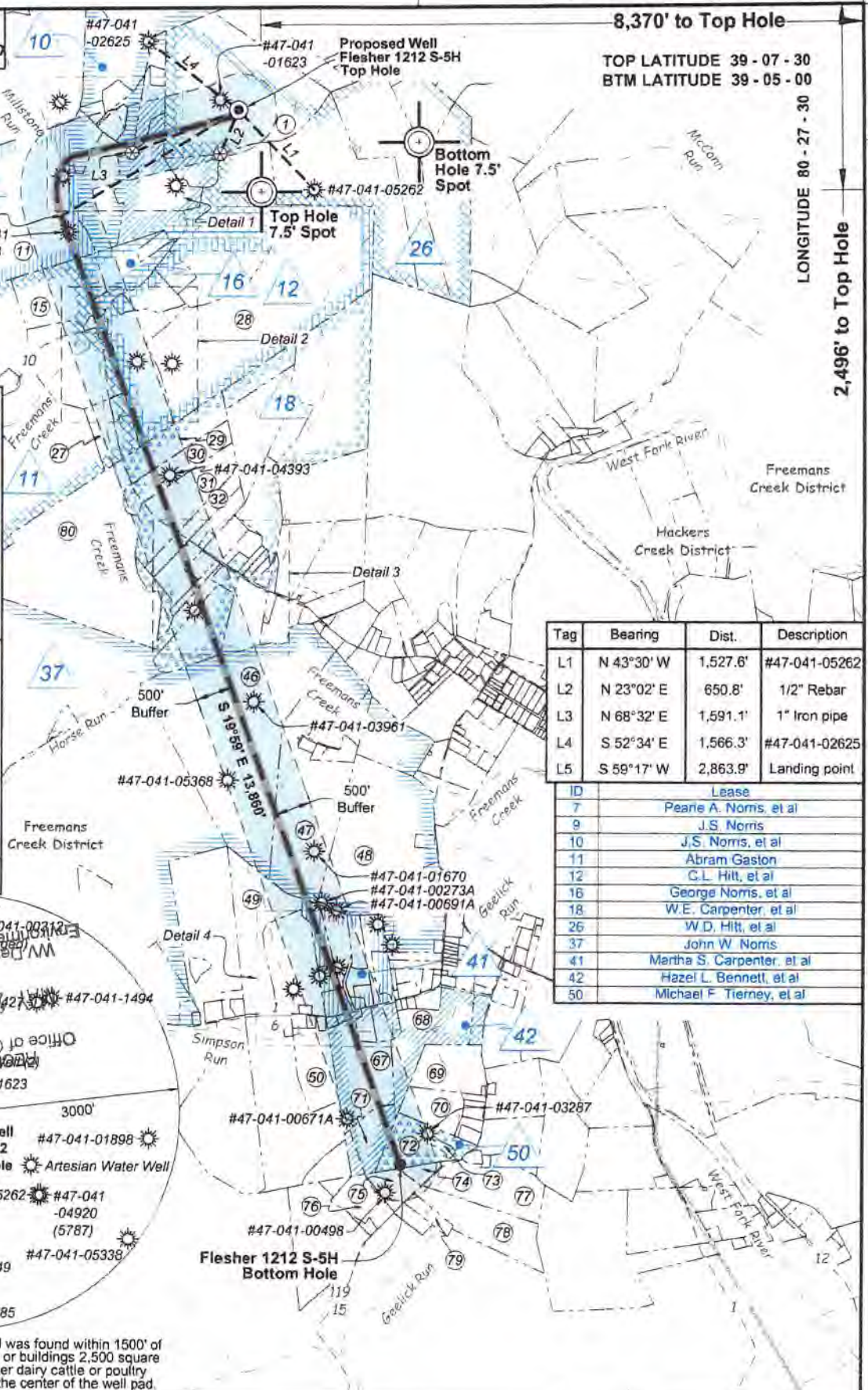


I, the undersigned, hereby certify that this plat is correct to the best of my knowledge and belief and shows all the information required by law and the rules issued and prescribed by the Department of Environmental Protection.

*Kevin S. James*  
Kevin S. James, P.S. 2305



Note: 2 water wells and 1 artesian well was found within 1500' of proposed well. No occupied dwellings or buildings 2,500 square feet or larger used to house or shelter dairy cattle or poultry husbandry are located within 625' of the center of the well pad.



Tag	Bearing	Dist.	Description
L1	N 43°30' W	1,527.6'	#47-041-05262
L2	N 23°02' E	650.8'	1/2" Rebar
L3	N 68°32' E	1,591.1'	1" Iron pipe
L4	S 52°34' E	1,566.3'	#47-041-02625
L5	S 59°17' W	2,863.9'	Landing point

ID	Lease
7	Pearie A. Norris, et al
9	J.S. Norris
10	J.S. Norris, et al
11	Abram Gaston
12	C.L. Hitt, et al
16	George Norris, et al
18	W.E. Carpenter, et al
26	W.D. Hitt, et al
37	John W. Norris
41	Martha S. Carpenter, et al
42	Hazel L. Bennett, et al
50	Michael F. Tierney, et al

FILE NO: 156-36-12-U-F-19  
DRAWING NO: Flesher 1212 S-5H Well Plat  
SCALE: 1" = 2000'  
MINIMUM DEGREE OF ACCURACY: Submeter  
PROVEN SOURCE OF ELEVATION: CORS, Bridgeport, WV

**STATE OF WEST VIRGINIA**  
DEPARTMENT OF ENVIRONMENTAL PROTECTION  
**OIL AND GAS DIVISION**

DATE: May 21 2021  
OPERATOR'S WELL NO. Flesher 1212 S-5H  
API WELL NO MOD  
47 - 041 - 05715  
STATE COUNTY PERMIT

WELL TYPE:  OIL  GAS  LIQUID INJECTION  WASTE DISPOSAL  
(IF GAS) PRODUCTION:  STORAGE  DEEP  SHALLOW

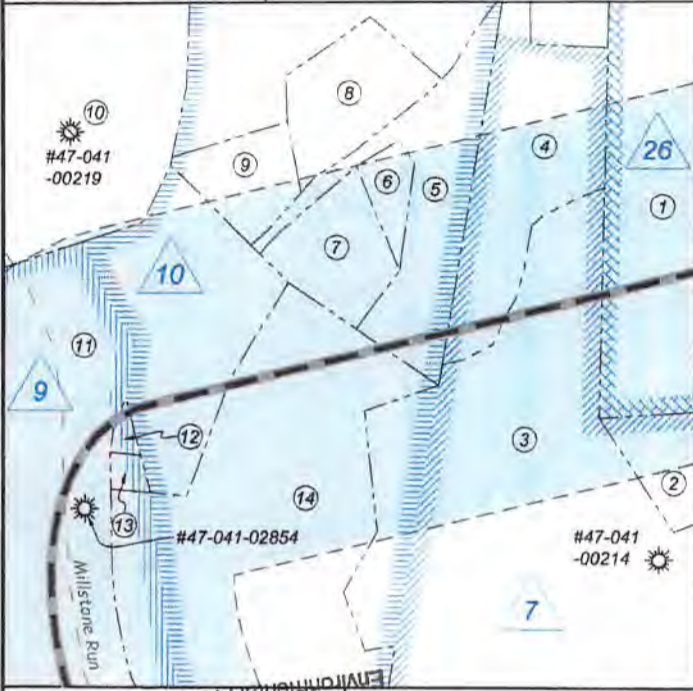
LOCATION: ELEVATION: 1,332.2' WATERSHED: Middle West Fork Creek  
DISTRICT: Freemans Creek QUADRANGLE: Weston  
SURFACE OWNER: H.G. Energy II Appalachia, LLC COUNTY: Lewis  
ROYALTY OWNER: W.D. Hitt, et al, et al LEASE NO: ACREAGE: 70.00  
PROPOSED WORK:  DRILL  CONVERT  DRILL DEEPER  FRACTURE OR STIMULATE  PLUG OFF OLD FORMATION  
 PERFORATE NEW FORMATION  OTHER PHYSICAL CHANGE IN WELL (SPECIFY) LP & BH MOD ACREAGE: 210.00  
 PLUG AND ABANDON  CLEAN OUT AND REPLUG TARGET FORMATION: Marcellus Shale ESTIMATED DEPTH: 22,103' MD 6.913' TVD

WELL OPERATOR: HG Energy II Appalachia, LLC DESIGNATED AGENT: Diane C. White  
ADDRESS: 5260 Dupont Road ADDRESS: 5260 Dupont Road  
Parkersburg, WV 26101 Parkersburg, WV 26101

06/11/2021



Detail 1 (Scale 1"=500')



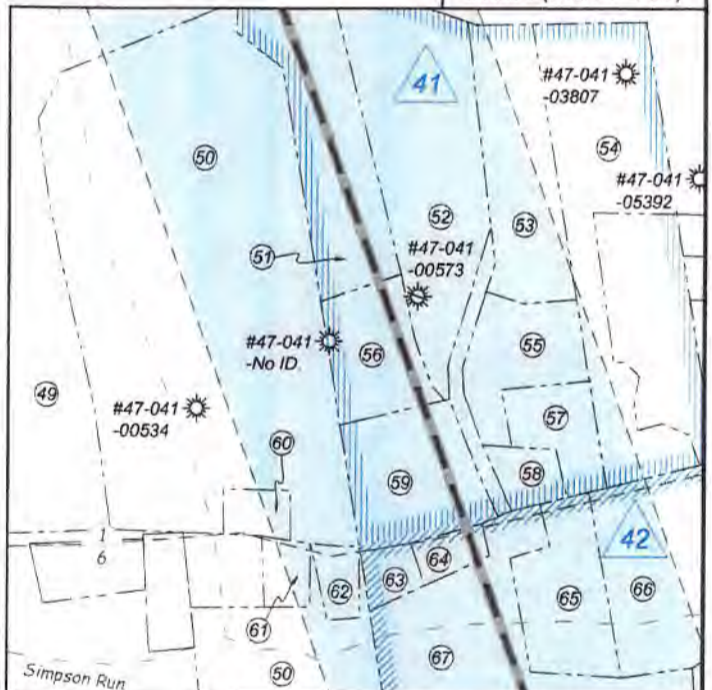
Detail 2 (Scale 1"=500')



Detail 3 (Scale 1"=500')



Detail 4 (Scale 1"=500')



FILE NO: 156-36-12-U-F-19  
DRAWING NO: Flesher 1212 S-5H Well Plat  
SCALE: 1" = 2000'  
MINIMUM DEGREE OF ACCURACY:  
Submeter  
PROVEN SOURCE OF ELEVATION:  
CORS, Bridgeport, WV

**STATE OF WEST VIRGINIA**  
DEPARTMENT OF ENVIRONMENTAL PROTECTION  
**OIL AND GAS DIVISION**

DATE: May 21 2021  
OPERATOR'S WELL NO. Flesher 1212 S-5H  
API WELL NO MOD  
47 - 041 - 05715  
STATE COUNTY PERMIT

WELL TYPE:  OIL  GAS  LIQUID INJECTION  WASTE DISPOSAL  
(IF GAS) PRODUCTION:  STORAGE  DEEP  SHALLOW

LOCATION: ELEVATION: 1,332.2' WATERSHED: Middle West Fork Creek

DISTRICT: Freemans Creek

SURFACE OWNER: H.G. Energy II Appalachia, LLC

ROYALTY OWNER: W.D. Hitt, et al, et al

PROPOSED WORK:  DRILL  CONVERT  DRILL DEEPER  FRACTURE OR STIMULATE  PLUG OFF OLD FORMATION  
 PERFORATE NEW FORMATION  OTHER PHYSICAL CHANGE IN WELL (SPECIFY) LP & BH MOD

PLUG AND ABANDON  CLEAN OUT AND REPLUG TARGET FORMATION: Marcellus Shale ESTIMATED DEPTH: 22,103' MD

WELL OPERATOR: HG Energy II Appalachia, LLC

ADDRESS: 5260 Dupont Road  
Parkersburg, WV 26101

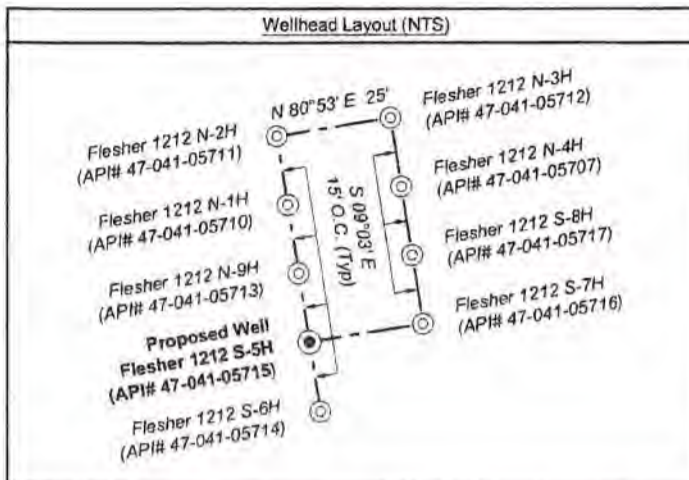
DESIGNATED AGENT: Diane C. White

ADDRESS: 5260 Dupont Road  
Parkersburg, WV 26101

06/11/2021

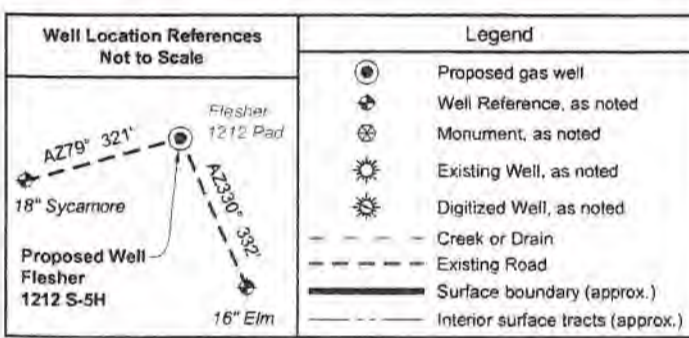


No.	TM / Par	Owner	Bk / Pg	Ac.
1	6C / 47	HG Energy II Appalachia, LLC	753 / 453	70.00
2	6C / 25.1	William Radtka & Helen Burton	655 / 681	5.85
3	6C / 25	Robert M. Painter	629 / 411	23.13
4	6C / 23	Richard G. & Loretta E. Hayhurst	566 / 355	34.80
5	6C / 23.4	Richard G. Hayhurst, et ux	565 / 326	4.13
6	6C / 23.10	Gary Farris	700 / 769	0.65
7	6C / 23.6	Gary Farris	700 / 769	2.02
8	6C / 23.7	Gary C. & Brenda J. Maki	671 / 327	2.40
9	6C / 23.5	Larry Jarrett & Michelle Casey	661 / 455	1.53
10	6C / 22	Mann Family Trust	617 / 608	265.19
11	6C / 21	Thomas R. Zinn, et al	445 / 493	166.25
12	6C / 23.1	Michael & Laura Phillips	661 / 298	0.16
13	6C / 23.9	Michael & Laura Phillips	661 / 298	0.25
14	6C / 23.2	Michael & Laura Phillips	661 / 298	21.32
15	6C / 17	Eastern Gas Transmission & Storage, Inc.	427 / 545	17.49
16	6C / 27.2	Kenneth Roth	575 / 152	3.10
17	6C / 27.3	George & Lisa Cogar	594 / 16	10.20
18	6C / 29	Carolyn M. Sias, et al	718 / 171	1.25
19	6C / 27.1	Allen E. Daugherty	502 / 435	1.06
20	6C / 30	Richard W. Dunham	586 / 149	0.50
21	6C / 16	Valley Chapel U.M. Church	7 / 285	0.33
22	6C / 31	Chad E. Dunham	662 / 681	0.81
23	6C / 32	Richard W. Dunham	W11 / 100	28.52
24	6C / 14	Eastern Gas Transmission & Storage, Inc.	427 / 545	27.30
25	6C / 33	Michael J. & Whitney N. Marsh	628 / 734	2.25
26	6C / 34	Richard W. Dunham	533 / 799	3.00
27	6C / 13	Eastern Gas Transmission & Storage, Inc.	427 / 545	6.57
28	6C / 32.1	Fred A. Bailey	W25 / 263	92.89
29	6C / 35	Richard D. & Connie S. Carpenter (LE)	707 / 83	15.00
30	6C / 36	Richard D. & Connie S. Carpenter (LE)	707 / 83	12.00
31	6C / 37	Richard D. & Connie S. Carpenter (LE)	707 / 83	21.50
32	6D / 24	Richard D. & Connie S. Carpenter (LE)	707 / 83	8.00
33	6D / 25	Lary & Gina F. Simon	702 / 865	4.30
34	6D / 25.3	Jessica L. Bailey	715 / 903	0.57
35	6D / 25.2	WV American Water Co.	583 / 337	0.01
36	6D / 25.4	Jessica L. Bailey	715 / 903	6.47
37	6D / 27.1	Blair R. Jackson	468 / 370	3.99
38	6D / 27.1	Karen Sue Carson	553 / 232	2.00
39	6D / 32	Elden R. Jackson	468 / 370	2.85
40	6D / 30	Scott & Amy Carpenter	709 / 826	3.93
41	6D / 28	Alicia Sue Lang	W31 / 530	1.68
42	6D / 30.1	Charles F. Bailey	W25 / 263	5.37
43	6D / 29	Tina M. Burnside	W42 / 563	1.91
44	6D / 29.1	Mary J. Bailey Trust	W49 / 571	14.09
45	6D / 37	Charles R. Kemper	487 / 688	13.40
46	6D / 55	Edward E. Garrett	482 / 153	95.00
47	6D / 65	Edward E. Garrett	482 / 153	61.08
48	6D / 64	Mary Lou Curry Trust	681 / 626	69.00
49	6D / 83.2	Edith L. Withers	W27 / 108	34.00
50	6D / 84	Chad & Elizabeth Boram	739 / 539	31.01
51	6D / 85.2	Martha & Raymond W. James, Jr.	570 / 478	4.40
52	6D / 85.6	Brian S. & Donna M. Seckman	546 / 250	6.07
53	6D / 85.7	Brian S. & Donna M. Seckman	546 / 250	3.33
54	6D / 90.1	Edgar L. & Patricia E. Bleigh	751 / 153	5.20
55	6D / 85	Brian S. & Donna M. Seckman	600 / 715	2.00
56	6D / 85.3	Kenneth F. & Sheryl A. Short	710 / 296	1.96
57	6D / 85.5	Tracy D. & Edgar L. Bleigh, Jr.	548 / 109	1.26
58	6D / 85.1	Stephen M. Perry	655 / 286	0.57
59	6D / 85.4	Ann L. James, et al	608 / 184	2.60
60	6D / 84.2	Joseph M. & Linda G. Menendez	592 / 685	0.52
61	6D / 84.1	Evelyn M. Money Penny	W12 / 471	0.52
62	6D / 84.4	Robert B. & Valerie Westfall	688 / 516	0.52
63	6D / 86.1	Carlos R. & Teresa Oseguera	747 / 112	0.56
64	6D / 86.2	Joseph C. & Kathryn Q. Kemper	598 / 475	0.46
65	6D / 86.3	David B. & Debra A. Montgomery	665 / 739	2.27
66	6D / 88	Robert Bailey, et al	659 / 782	4.20
67	6D / 86	David B. & Debra A. Montgomery	557 / 829	23.85
68	6D / 93	David B. & Debra A. Montgomery	614 / 714	19.10
69	7D / 17	Karen Butcher, et al	FID	13.75
70	7E / 1.5	George W. Persinger	565 / 70	10.11



Notes: Well No. Flesher 1212 S-5H  
West Virginia Coordinate System of 1927, North Zone based upon Differential GPS Measurements.  
Top Hole coordinates Bottom Hole coordinates  
Latitude: 39°07'05.32" Longitude: 80°29'16.24" UTM Zone 17, NAD 1983  
Latitude: 39°04'41.99" Longitude: 80°28'48.44" UTM Zone 17, NAD 1983  
Top Hole Coordinates Bottom Hole Coordinates  
N: 4,330,022.638m N: 4,325,608.139m  
E: 544,290.717m E: 544,983.628m  
Plate orientation and corner and well references are based upon the grid north meridian. Well location references are based upon the magnetic meridian.

Notes:  
Well No. Flesher 1212 S-5H  
UTM NAD 1983 (USSF)  
Top Hole Coordinates  
N: 14,206,082.59'  
E: 1,785,727.12'  
Landing Point Coordinates  
N: 14,204,620.07'  
E: 1,783,264.82'  
Bottom Hole Coordinates  
N: 14,191,599.36'  
E: 1,788,000.45'



No.	TM / Par	Owner	Bk / Pg	Ac.
71	6E / 46	Marjorie L. & Michael F. Tierney, Jr.	520 / 168	11.00
72	6E / 32	Marjorie L. & Michael F. Tierney, Jr.	582 / 479	12.60
73	7E / 53	Marjorie L. & Michael F. Tierney, Jr.	564 / 168	1.00
74	6E / 33	John W. & Debra K. Carroll	384 / 231	2.64
75	6E / 29.1	Samuel M. & Janice S. Bailey	338 / 639	5.72
76	6E / 30.2	Robert Bailey, et al	659 / 782	6.22
77	7E / 5	Martha C. Queen	553 / 416	20.40
78	7E / 6	Martha C. Queen	553 / 416	15.38
79	6E / 44	Terry & Susanna Flesher	639 / 812	3.00
80	6D / 23	Scott & Amy Carpenter	709 / 826	80.00

FILE NO: 156-36-12-U-F-19  
DRAWING NO: Flesher 1212 S-5H Well Plat  
SCALE: 1" = 2000'  
MINIMUM DEGREE OF ACCURACY:  
Submeter  
PROVEN SOURCE OF ELEVATION:  
CORS, Bridgeport, WV

**STATE OF WEST VIRGINIA**  
DEPARTMENT OF ENVIRONMENTAL PROTECTION  
**OIL AND GAS DIVISION**

DATE: May 21 2021  
OPERATOR'S WELL NO. Flesher 1212 S-5H  
API WELL NO MOD  
47 - 041 - 05715  
STATE COUNTY PERMIT

WELL TYPE:  OIL  GAS  LIQUID INJECTION  WASTE DISPOSAL  
(IF GAS) PRODUCTION:  STORAGE  DEEP  SHALLOW

LOCATION: ELEVATION: 1,332.2' WATERSHED: Middle West Fork Creek  
DISTRICT: Freemans Creek  
SURFACE OWNER: H.G. Energy II Appalachia, LLC  
ROYALTY OWNER: W.D. Hitt, et al, et al LEASE NO: \_\_\_\_\_ ACREAGE: 210.00  
PROPOSED WORK:  DRILL  CONVERT  DRILL DEEPER  FRACTURE OR STIMULATE  PLUG OFF OLD FORMATION  
 PERFORATE NEW FORMATION  OTHER PHYSICAL CHANGE IN WELL (SPECIFY) LP & BH MOD  
 PLUG AND ABANDON  CLEAN OUT AND REPLUG TARGET FORMATION: Marcellus Shale ESTIMATED DEPTH: 22,103' MD 6,913' TVD

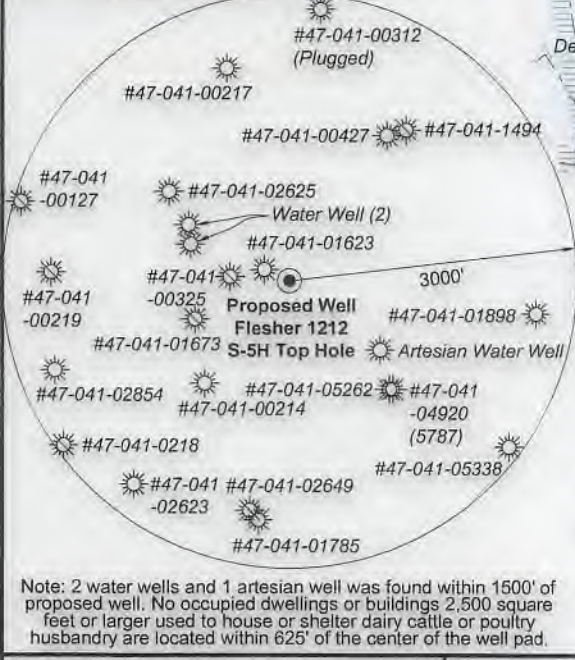
WELL OPERATOR: HG Energy II Appalachia, LLC DESIGNATED AGENT: Diane C. White  
ADDRESS: 5260 Dupont Road ADDRESS: 5260 Dupont Road  
Parkersburg, WV 26101 Parkersburg, WV 26101



I, the undersigned, hereby certify that this plat is correct to the best of my knowledge and belief and shows all the information required by law and the rules issued and prescribed by the Department of Environmental Protection.

*Kevin S. James*

Kevin S. James, P.S. 2305



Note: 2 water wells and 1 artesian well was found within 1500' of proposed well. No occupied dwellings or buildings 2,500 square feet or larger used to house or shelter dairy cattle or poultry husbandry are located within 625' of the center of the well pad.

FILE NO: 156-36-12-U-F-19  
DRAWING NO: Flesher 1212 S-5H Well Plat  
SCALE: 1" = 2000'  
MINIMUM DEGREE OF ACCURACY: Submeter  
PROVEN SOURCE OF ELEVATION: CORS, Bridgeport, WV

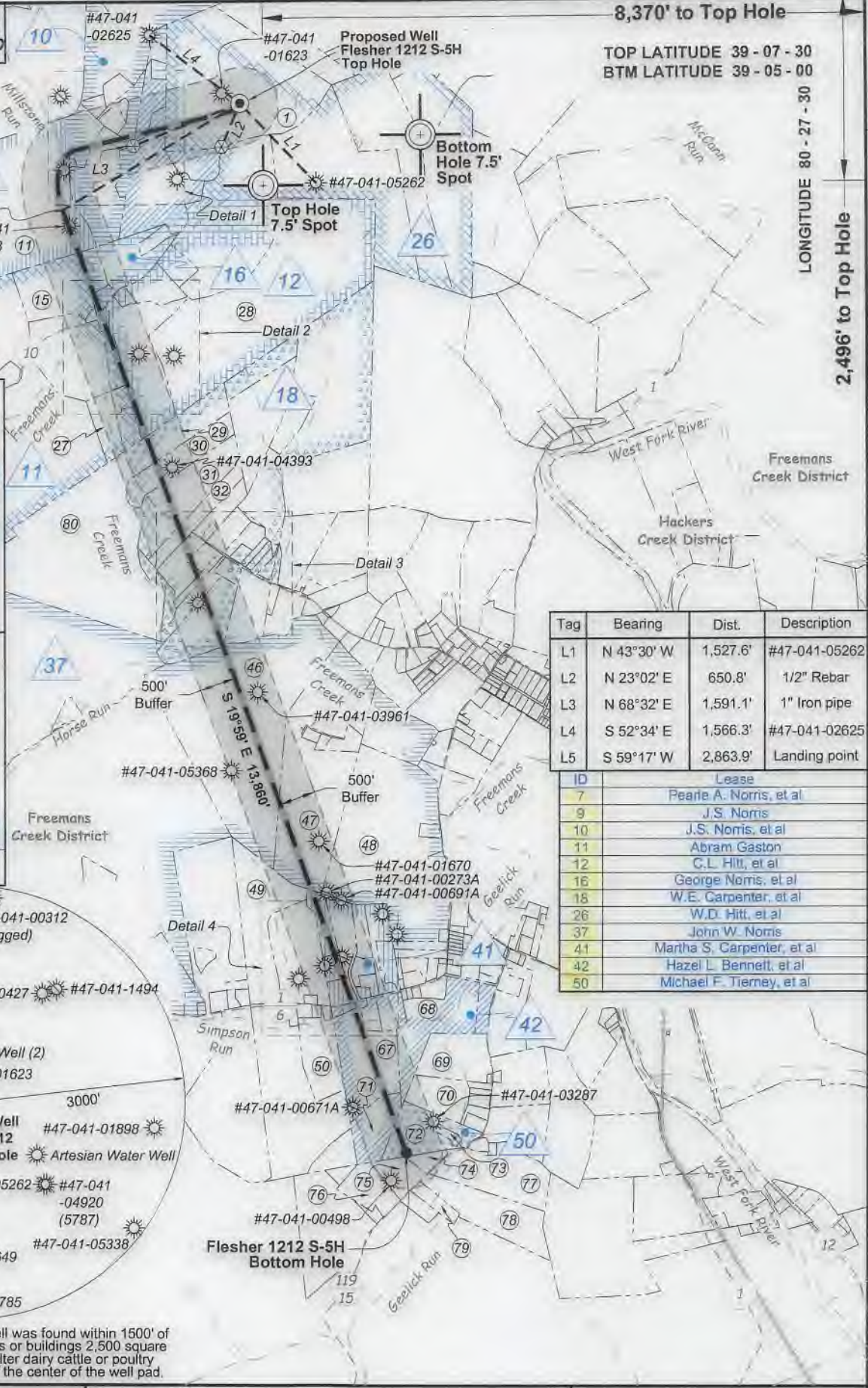
**STATE OF WEST VIRGINIA**  
DEPARTMENT OF ENVIRONMENTAL PROTECTION  
**OIL AND GAS DIVISION**

DATE: May 21 2021  
OPERATOR'S WELL NO. Flesher 1212 S-5H  
API WELL NO. **MWD**  
47 - 041 - 05715  
STATE COUNTY PERMIT

WELL TYPE:  OIL  GAS  LIQUID INJECTION  WASTE DISPOSAL  
(IF GAS) PRODUCTION:  STORAGE  DEEP  SHALLOW

LOCATION: ELEVATION: 1,332.2' WATERSHED: Middle West Fork Creek  
DISTRICT: Freemans Creek  
SURFACE OWNER: H.G. Energy II Appalachia, LLC  
ROYALTY OWNER: W.D. Hitt, et al, et al LEASE NO: ACREAGE: 210.00  
PROPOSED WORK:  DRILL  CONVERT  DRILL DEEPER  FRACTURE OR STIMULATE  PLUG OFF OLD FORMATION  
 PERFORATE NEW FORMATION  OTHER PHYSICAL CHANGE IN WELL (SPECIFY) LP & BH MOD 6,913' TVD  
 PLUG AND ABANDON  CLEAN OUT AND REPLUG TARGET FORMATION: Marcellus Shale ESTIMATED DEPTH: 22,103' MD

WELL OPERATOR: HG Energy II Appalachia, LLC DESIGNATED AGENT: Diane C. White  
ADDRESS: 5260 Dupont Road ADDRESS: 5260 Dupont Road  
Parkersburg, WV 26101 Parkersburg, WV 26101



Tag	Bearing	Dist.	Description
L1	N 43°30' W	1,527.6'	#47-041-05262
L2	N 23°02' E	650.8'	1/2" Rebar
L3	N 68°32' E	1,591.1'	1" Iron pipe
L4	S 52°34' E	1,566.3'	#47-041-02625
L5	S 59°17' W	2,863.9'	Landing point

ID	Lease
7	Pearle A. Norris, et al
9	J.S. Norris
10	J.S. Norris, et al
11	Abram Gaston
12	C.L. Hitt, et al
16	George Norris, et al
18	W.E. Carpenter, et al
26	W.D. Hitt, et al
37	John W. Norris
41	Martha S. Carpenter, et al
42	Hazel L. Bennett, et al
50	Michael F. Tierney, et al

6,184' to Bottom Hole

8,370' to Top Hole

TOP LATITUDE 39 - 07 - 30  
BTM LATITUDE 39 - 05 - 00

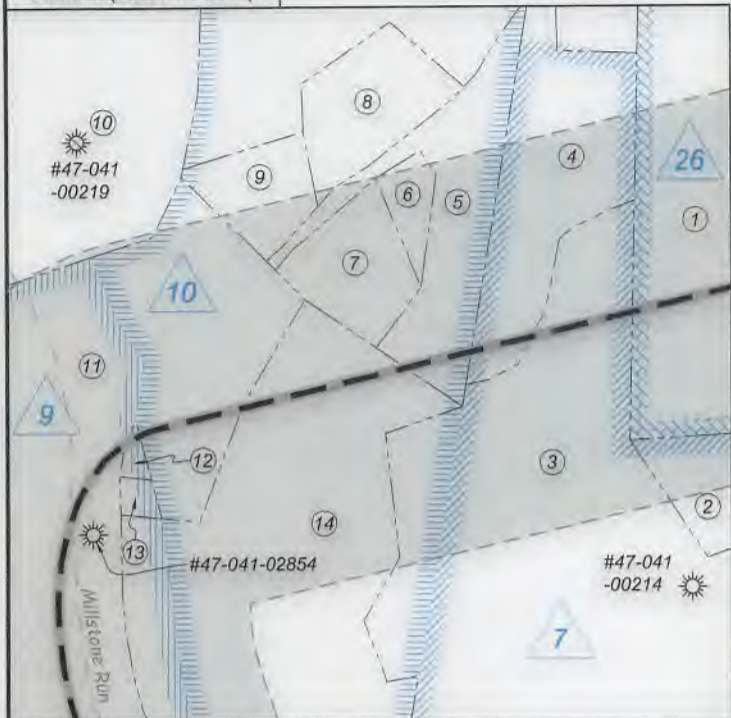
LONGITUDE 80 - 27 - 30

2,496' to Top Hole

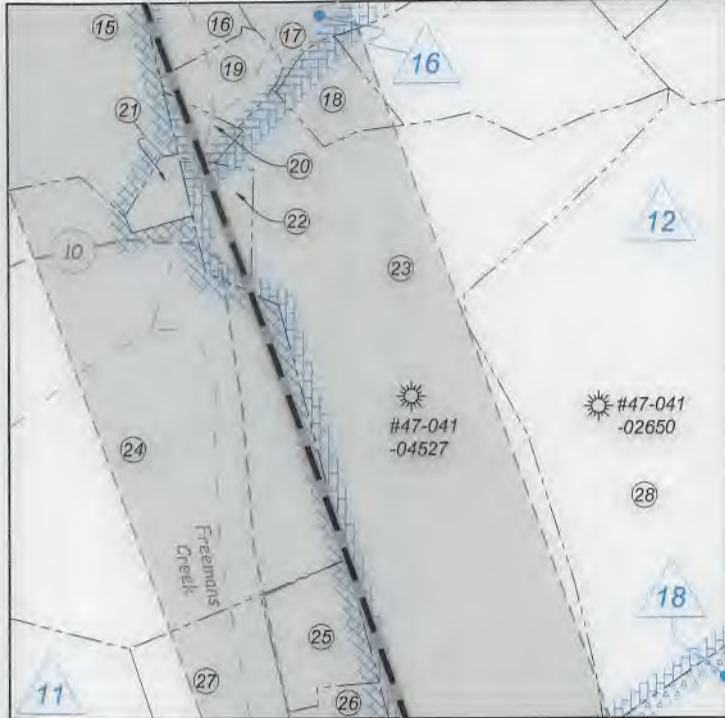
1,822' to Bottom Hole



Detail 1 (Scale 1"=500')



Detail 2 (Scale 1"=500')



Detail 3 (Scale 1"=500')



Detail 4 (Scale 1"=500')



FILE NO: 156-36-12-U-F-19  
DRAWING NO: Flesher 1212 S-5H Well Plat  
SCALE: 1" = 2000'  
MINIMUM DEGREE OF ACCURACY:  
Submeter  
PROVEN SOURCE OF ELEVATION:  
CORS, Bridgeport, WV

**STATE OF WEST VIRGINIA**  
DEPARTMENT OF ENVIRONMENTAL PROTECTION  
**OIL AND GAS DIVISION**

DATE: May 21 2021  
OPERATOR'S WELL NO. Flesher 1212 S-5H  
API WELL NO **MoD**  
47 - 041 - 05715  
STATE COUNTY PERMIT

WELL TYPE:  OIL  GAS  LIQUID INJECTION  WASTE DISPOSAL  
(IF GAS) PRODUCTION:  STORAGE  DEEP  SHALLOW

LOCATION: ELEVATION: 1,332.2' WATERSHED: Middle West Fork Creek

QUADRANGLE: Weston

DISTRICT: Freemans Creek

COUNTY: LeWIS 06/11/2021

SURFACE OWNER: H.G. Energy II Appalachia, LLC

ACREAGE: 70.00

ROYALTY OWNER: W.D. Hitt, et al, et al

LEASE NO: \_\_\_\_\_ ACREAGE: 210.00

PROPOSED WORK:  DRILL  CONVERT  DRILL DEEPER  FRACTURE OR STIMULATE  PLUG OFF OLD FORMATION  
 PERFORATE NEW FORMATION  OTHER PHYSICAL CHANGE IN WELL (SPECIFY) LP & BH MOD

PLUG AND ABANDON  CLEAN OUT AND REPLUG TARGET FORMATION: Marcellus Shale ESTIMATED DEPTH: 6,913' TVD 22,103' MD

WELL OPERATOR: HG Energy II Appalachia, LLC

DESIGNATED AGENT: Diane C. White

ADDRESS: 5260 Dupont Road

ADDRESS: 5260 Dupont Road

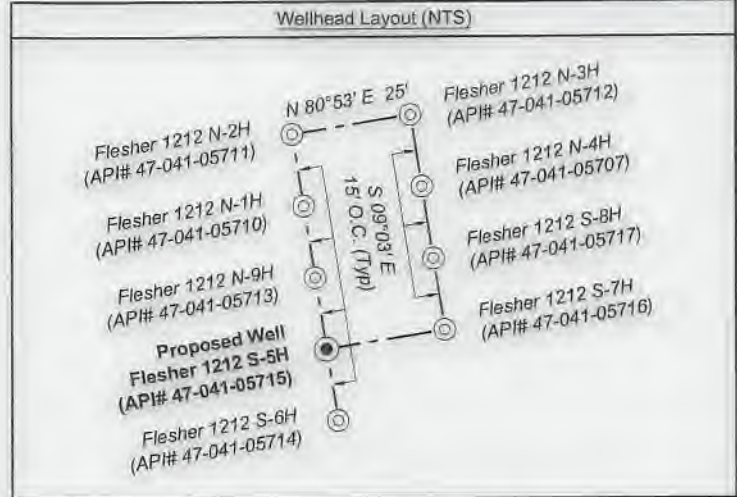
Parkersburg, WV 26101

Parkersburg, WV 26101



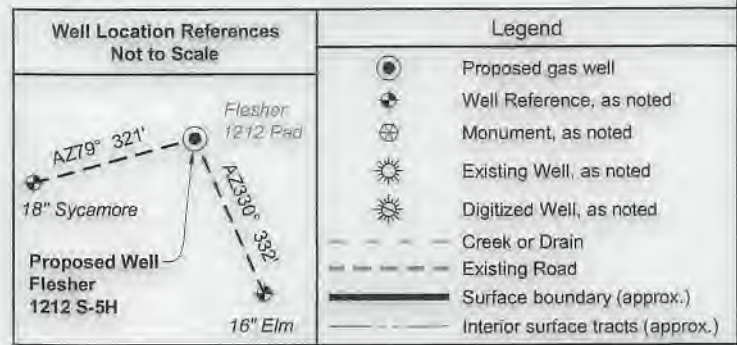
Lewis Co. - Freeman Creek Dist.

No.	TM / Par	Owner	Bk / Pg	Ac.
1	6C / 47	HG Energy II Appalachia, LLC	753 / 453	70.00
2	6C / 25.1	William Radtka & Helen Burton	655 / 681	5.85
3	6C / 25	Robert M. Painter	629 / 411	23.13
4	6C / 23	Richard G. & Loretta E. Hayhurst	566 / 355	34.80
5	6C / 23.4	Richard G. Hayhurst, et ux	565 / 326	4.13
6	6C / 23.10	Gary Farris	700 / 769	0.65
7	6C / 23.6	Gary Farris	700 / 769	2.02
8	6C / 23.7	Gary C. & Brenda J. Maki	671 / 327	2.40
9	6C / 23.5	Larry Jarrett & Michelle Casey	661 / 455	1.53
10	6C / 22	Mann Family Trust	617 / 608	265.19
11	6C / 21	Thomas R. Zinn, et al	445 / 493	166.25
12	6C / 23.1	Michael & Laura Phillips	661 / 298	0.16
13	6C / 23.9	Michael & Laura Phillips	661 / 298	0.25
14	6C / 23.2	Michael & Laura Phillips	661 / 298	21.32
15	6C / 17	Eastern Gas Transmission & Storage, Inc.	427 / 545	17.49
16	6C / 27.2	Kenneth Roth	575 / 152	3.10
17	6C / 27.3	George & Lisa Cogar	594 / 16	10.20
18	6C / 29	Carolyn M. Sias, et al	718 / 171	1.25
19	6C / 27.1	Allen E. Daugherty	502 / 435	1.06
20	6C / 30	Richard W. Dunham	586 / 149	0.50
21	6C / 16	Valley Chapel U.M. Church	7 / 285	0.33
22	6C / 31	Chad E. Dunham	662 / 681	0.81
23	6C / 32	Richard W. Dunham	W11 / 100	28.52
24	6C / 14	Eastern Gas Transmission & Storage, Inc.	427 / 545	27.30
25	6C / 33	Michael J. & Whitney N. Marsh	628 / 734	2.25
26	6C / 34	Richard W. Dunham	533 / 799	3.00
27	6C / 13	Eastern Gas Transmission & Storage, Inc.	427 / 545	6.57
28	6C / 32.1	Fred A. Bailey	W25 / 263	92.89
29	6C / 35	Richard D. & Connie S. Carpenter (LE)	707 / 83	15.00
30	6C / 36	Richard D. & Connie S. Carpenter (LE)	707 / 83	12.00
31	6C / 37	Richard D. & Connie S. Carpenter (LE)	707 / 83	21.50
32	6D / 24	Richard D. & Connie S. Carpenter (LE)	707 / 83	8.00
33	6D / 25	Larry & Gina F. Simon	702 / 865	4.30
34	6D / 25.3	Jessica L. Bailey	715 / 903	0.57
35	6D / 25.2	WV American Water Co.	583 / 337	0.01
36	6D / 25.4	Jessica L. Bailey	715 / 903	6.47
37	6D / 26	Elden R. Jackson	466 / 370	3.99
38	6D / 27.1	Karen Sue Carson	553 / 232	2.00
39	6D / 32	Elden R. Jackson	468 / 370	2.85
40	6D / 30	Scott & Amy Carpenter	709 / 826	3.93
41	6D / 28	Alicia Sue Lang	W31 / 530	1.68
42	6D / 30.1	Charles F. Bailey	W25 / 263	5.37
43	6D / 29	Tina M. Burnside	W42 / 563	1.91
44	6D / 29.1	Mary J. Bailey Trust	W49 / 571	14.09
45	6D / 37	Charles R. Kemper	487 / 688	13.40
46	6D / 55	Edward E. Garrett	482 / 153	95.00
47	6D / 65	Edward E. Garrett	482 / 153	61.08
48	6D / 64	Mary Lou Curry Trust	681 / 626	69.00
49	6D / 83.2	Edith L. Withers	W27 / 108	34.00
50	6D / 84	Chad & Elizabeth Boram	739 / 539	31.01
51	6D / 85.2	Martha & Raymond W. James, Jr.	570 / 478	4.40
52	6D / 85.6	Brian S. & Donna M. Seckman	546 / 250	6.07
53	6D / 85.7	Brian S. & Donna M. Seckman	546 / 250	3.33
54	6D / 90.1	Edgar L. & Patricia E. Bleigh	751 / 153	5.20
55	6D / 85	Brian S. & Donna M. Seckman	600 / 715	2.00
56	6D / 85.3	Kenneth F. & Sheryl A. Short	710 / 296	1.96
57	6D / 85.5	Tracy D. & Edgar L. Bleigh, Jr.	548 / 109	1.26
58	6D / 85.1	Stephen M. Perry	655 / 286	0.57
59	6D / 85.4	Ann L. James, et al	608 / 184	2.60
60	6D / 84.2	Joseph M. & Linda G. Menendez	592 / 685	0.52
61	6D / 84.1	Evelyn M. Money Penny	W12 / 471	0.52
62	6D / 84.4	Robert B. & Valerie Westfall	688 / 516	0.52
63	6D / 86.1	Carlos R. & Teresa Oseguera	747 / 112	0.56
64	6D / 86.2	Joseph C. & Kathryn Q. Kemper	598 / 475	0.46
65	6D / 86.3	David B. & Debra A. Montgomery	665 / 739	2.27
66	6D / 88	Robert Bailey, et al	659 / 782	4.20
67	6D / 86	David B. & Debra A. Montgomery	557 / 829	23.85
68	6D / 93	David B. & Debra A. Montgomery	614 / 714	19.10
69	7D / 17	Karen Butcher, et al	FID	13.75
70	7E / 1.5	George W. Persinger	565 / 70	10.11



**Notes:** Well No. Flesher 1212 S-5H  
West Virginia Coordinate System of 1927, North Zone based upon Differential GPS Measurements.  
Top Hole coordinates: Latitude: 39°07'05.32" Longitude: 80°29'16.24"  
Bottom Hole coordinates: Latitude: 39°04'41.99" Longitude: 80°28'48.44"  
UTM Zone 17, NAD 1983  
Top Hole Coordinates: N: 4,330,022.638m E: 544,290.717m  
Bottom Hole Coordinates: N: 4,325,608.139m E: 544,983.628m  
Plate orientation and corner and well references are based upon the grid north meridian. Well location references are based upon the magnetic meridian.

**Notes:** Well No. Flesher 1212 S-5H  
UTM NAD 1983 (USSF)  
Top Hole Coordinates: N: 14,206,082.59' E: 1,785,727.12'  
Landing Point Coordinates: N: 14,204,620.07' E: 1,783,264.82'  
Bottom Hole Coordinates: N: 14,191,599.36' E: 1,788,000.45'



Lewis Co. - Freeman Creek Dist.				
No.	TM / Par	Owner	Bk / Pg	Ac.
71	6E / 46	Marjorie L. & Michael F. Tierney, Jr.	520 / 168	11.00
72	6E / 32	Marjorie L. & Michael F. Tierney, Jr.	582 / 479	12.60
73	7E / 53	Marjorie L. & Michael F. Tierney, Jr.	564 / 168	1.00
74	6E / 33	John W. & Debra K. Carroll	384 / 231	2.64
75	6E / 29.1	Samuel M. & Janice S. Bailey	338 / 639	5.72
76	6E / 30.2	Robert Bailey, et al	659 / 782	6.22
77	7E / 5	Martha C. Queen	553 / 416	20.40
78	7E / 6	Martha C. Queen	553 / 416	15.38
79	6E / 44	Terry & Susanna Flesher	639 / 812	3.00
80	6D / 23	Scott & Amy Carpenter	709 / 826	80.00

FILE NO: 156-36-12-U-F-19  
DRAWING NO: Flesher 1212 S-5H Well Plat  
SCALE: 1" = 2000'  
MINIMUM DEGREE OF ACCURACY: Submeter  
PROVEN SOURCE OF ELEVATION: CORS, Bridgeport, WV

**STATE OF WEST VIRGINIA**  
DEPARTMENT OF ENVIRONMENTAL PROTECTION  
**OIL AND GAS DIVISION**

DATE: May 21 2021  
OPERATOR'S WELL NO. Flesher 1212 S-5H  
API WELL NO. 47-041-05715  
STATE COUNTY PERMIT

WELL TYPE:  OIL  GAS  LIQUID INJECTION  WASTE DISPOSAL  
(IF GAS) PRODUCTION:  STORAGE  DEEP  SHALLOW

LOCATION: ELEVATION: 1,332.2' WATERSHED: Middle West Fork Creek  
DISTRICT: Freemans Creek  
SURFACE OWNER: H.G. Energy II Appalachia, LLC  
ROYALTY OWNER: W.D. Hitt, et al, et al LEASE NO: ACREAGE: 210.00

PROPOSED WORK:  DRILL  CONVERT  DRILL DEEPER  FRACTURE OR STIMULATE  PLUG OFF OLD FORMATION  
 PERFORATE NEW FORMATION  OTHER PHYSICAL CHANGE IN WELL (SPECIFY) LP & BH MOD 6,913' TVD  
 PLUG AND ABANDON  CLEAN OUT AND REPLUG TARGET FORMATION: Marcellus Shale ESTIMATED DEPTH: 22,103' MD

WELL OPERATOR: HG Energy II Appalachia, LLC DESIGNATED AGENT: Diane C. White  
ADDRESS: 5260 Dupont Road ADDRESS: 5260 Dupont Road  
Parkersburg, WV 26101 Parkersburg, WV 26101

WW-6A1  
(5/13)

Operator's Well No. Flesher 1212 S-5H

**INFORMATION SUPPLIED UNDER WEST VIRGINIA CODE  
Chapter 22, Article 6A, Section 5(a)(5)  
IN LIEU OF FILING LEASE(S) AND OTHER CONTINUING CONTRACT(S)**

Under the oath required to make the verification on page 1 of this Notice and Application, I depose and say that I am the person who signed the Notice and Application for the Applicant, and that –

- (1) the tract of land is the same tract described in this Application, partly or wholly depicted in the accompanying plat, and described in the Construction and Reclamation Plan;
- (2) the parties and recordation data (if recorded) for lease(s) or other continuing contract(s) by which the Applicant claims the right to extract, produce or market the oil or gas are as follows:

Lease Name or Number	Grantor, Lessor, etc.	Grantee, Lessee, etc.	Royalty	Book/Page
-------------------------	-----------------------	-----------------------	---------	-----------

\*\*See Attached Sheets\*\*

**Acknowledgement of Possible Permitting/Approval  
In Addition to the Office of Oil and Gas**

RECEIVED  
Office of Oil and Gas

MAY 27 2021

WV Department of  
Environmental Protection

The permit applicant for the proposed well work addressed in this application hereby acknowledges the possibility of the need for permits and/or approvals from local, state, or federal entities in addition to the DEP, Office of Oil and Gas, including but not limited to the following:

- WV Division of Water and Waste Management
- WV Division of Natural Resources WV Division of Highways
- U.S. Army Corps of Engineers
- U.S. Fish and Wildlife Service
- County Floodplain Coordinator

The applicant further acknowledges that any Office of Oil and Gas permit in no way overrides, replaces, or nullifies the need for other permits/approvals that may be necessary and further affirms that all needed permits/approvals should be acquired from the appropriate authority before the affected activity is initiated.

Well Operator: HG Energy II Appalachia, LLC  
 By: Diane White *Diane White*  
 Its: Accountant

TRACT #1212S	LEGACY LEASE NUMBER	TAX MAP	LEASE NUMBER	GRANTOR/LESSOR	GRANTEE/LESSEE	ROYALTY	DEED BOOK	PAGE
26	FK053270	03-006C-0045-0000 03-006C-0046-0000 03-006C-0053-0000 03-006C-0054-0000 03-007C-0007-0000 p/o 03-006C-0043-0000 p/o 03-006C-0043-0001 p/o 03-006C-0047-0000	Q100675000	W. D. HITT AND ALDA HITT, HIS WIFE; J. C. HITT AND DORA HITT, HIS WIFE; L.A. MCCARTY AND F. R. MCCARTY, HER HUSBAND; GEORGE W. NEELY AND GRACE M. NEELY, HIS WIFE	RESERVE GAS COMPANY	NOT LESS THAN 1/8	68	524
				HOPE NATURAL GAS COMPANY	HOPE NATURAL GAS COMPANY	CONFIRMATORY DEED	155	202
				HOPE NATURAL GAS COMPANY	RESERVE GAS COMPANY	CONFIRMATORY DEED	294	89
				CONSOLIDATED GAS SUPPLY CORPORATION	CONSOLIDATED GAS SUPPLY CORPORATION	CONFIRMATORY DEED	294	89
				CONSOLIDATED GAS TRANSMISSION CORPORATION	CONSOLIDATED GAS TRANSMISSION CORPORATION	ASSIGNMENT	425	127
				CNG TRANSMISSION CORPORATION	CNG TRANSMISSION CORPORATION	MERGER/NAME CHANGE	WVSOS	
				DOMINION TRANSMISSION, INC.	DOMINION TRANSMISSION, INC.	MERGER/NAME CHANGE	WVSOS	
				CNX GAS COMPANY LLC	CNX GAS COMPANY LLC	MEMORANDUM FARMOUT AGREEMENT	672	154
				DOMINION TRANSMISSION, INC.	NOBLE ENERGY, INC.	LIMITED PARTIAL ASSIGNMENT (50%)	684	57
				CNX GAS COMPANY LLC	CNX GAS COMPANY LLC AND NOBLE ENERGY, INC.	PARTIAL ASSIGNMENT (32%)	712	848
				NOBLE ENERGY, INC.	NOBLE ENERGY, INC.	ASSIGNMENT	717	1
				NOBLE ENERGY, INC.	HG ENERGY II APPALACHIA, LLC	ASSIGNMENT	722	139
				DOMINION TRANSMISSION, INC.	DOMINION ENERGY TRANSMISSION, INC.	MERGER/NAME CHANGE	WVSOS	
				DOMINION ENERGY TRANSMISSION, INC.	HG ENERGY II APPALACHIA, LLC	SECOND AMENDMENT TO MEMORANDUM OF FARMOUT AGREEMENT	723	499
				DOMINION ENERGY TRANSMISSION, INC.	HG ENERGY II APPALACHIA, LLC	THIRD AMENDMENT TO MEMORANDUM OF FARMOUT AGREEMENT	734	558
DOMINION ENERGY TRANSMISSION, INC.	HG ENERGY II APPALACHIA, LLC	ASSIGNMENT (68%)	736	220				
7	FK064074	03-006C-0025-0000; 03-006C-0025-0001; P/O 03-006C-0023-0000; P/O 03-006C-0043-0000	Q100293000	PEARLE A. NORRIS AND EDNA N. PAUGH AND CHAS. S. PAUGH, HER HUSBAND	HOPE NATURAL GAS COMPANY	NOT LESS THAN 1/8	219	218
				HOPE NATURAL GAS COMPANY	CONSOLIDATED GAS SUPPLY CORPORATION	CONFIRMATORY DEED	294	89
				CONSOLIDATED GAS SUPPLY CORPORATION	CONSOLIDATED GAS TRANSMISSION CORPORATION	ASSIGNMENT	425	127
				CONSOLIDATED GAS TRANSMISSION CORPORATION	CNG TRANSMISSION CORPORATION	MERGER/NAME CHANGE	WVSOS	
				CNG TRANSMISSION CORPORATION	DOMINION TRANSMISSION, INC.	MERGER/NAME CHANGE	WVSOS	
				DOMINION TRANSMISSION, INC.	CNX GAS COMPANY LLC	MEMORANDUM OF FARMOUT AGREEMENT	672	154
				CNX GAS COMPANY LLC	NOBLE ENERGY, INC.	LIMITED PARTIAL ASSIGNMENT (50%)	684	57
				DOMINION TRANSMISSION, INC.	CNX GAS COMPANY LLC AND NOBLE ENERGY, INC.	PARTIAL ASSIGNMENT (32%)	712	848
				CNX GAS COMPANY LLC	NOBLE ENERGY, INC.	ASSIGNMENT	717	1
				NOBLE ENERGY, INC.	HG ENERGY II APPALACHIA, LLC	ASSIGNMENT	722	139
				NOBLE ENERGY, INC.	HG ENERGY II APPALACHIA, LLC	ASSIGNMENT	722	170
				DOMINION TRANSMISSION, INC.	DOMINION ENERGY TRANSMISSION, INC.	MERGER/NAME CHANGE	WVSOS	
				DOMINION ENERGY TRANSMISSION, INC.	HG ENERGY II APPALACHIA, LLC	SECOND AMENDMENT TO MEMORANDUM OF FARMOUT AGREEMENT	723	499
				DOMINION ENERGY TRANSMISSION, INC.	HG ENERGY II APPALACHIA, LLC	THIRD AMENDMENT TO MEMORANDUM OF FARMOUT AGREEMENT	734	558
				DOMINION ENERGY TRANSMISSION, INC.	HG ENERGY II APPALACHIA, LLC	ASSIGNMENT (68%)	736	220
10	FK053181	03-006C-0023-0000, 03-006C-0023-0001, 03-006C-0023-0002, 03-006C-0023-0003, 03-006C-0023-0004, 03-006C-0023-0005, 03-006C-0023-0006, 03-006C-0023-0007, 03-006C-0023-0008, 03-006C-0023-0009	Q101024000	J. S. NORRIS AND GEO. NORRIS AND L. N. NORRIS, HIS WIFE	SOUTH PENN OIL COMPANY	NOT LESS THAN 1/8	42	122
				SOUTH PENN OIL COMPANY	HOPE NATURAL GAS COMPANY	ASSIGNMENT	85	127
				HOPE NATURAL GAS COMPANY	RESERVE GAS COMPANY	ASSIGNMENT	79	370
				SOUTH PENN OIL COMPANY	RESERVE GAS COMPANY	ASSIGNMENT	79	237
				RESERVE GAS COMPANY	HOPE NATURAL GAS COMPANY	CONFIRMATORY DEED	155	202
				HOPE NATURAL GAS COMPANY	CONSOLIDATED GAS SUPPLY CORPORATION	CONFIRMATORY DEED	294	89
				CONSOLIDATED GAS SUPPLY CORPORATION	CONSOLIDATED GAS TRANSMISSION CORPORATION	ASSIGNMENT	425	127
				CONSOLIDATED GAS TRANSMISSION CORPORATION	CNG TRANSMISSION CORPORATION	MERGER/NAME CHANGE	WVSOS	
				CNG TRANSMISSION CORPORATION	DOMINION TRANSMISSION, INC.	MERGER/NAME CHANGE	WVSOS	
				DOMINION TRANSMISSION, INC.	CNX GAS COMPANY LLC	MEMORANDUM OF FARMOUT AGREEMENT	672	154
				CNX GAS COMPANY LLC	NOBLE ENERGY, INC.	LIMITED PARTIAL ASSIGNMENT (50%)	684	57
				DOMINION TRANSMISSION, INC.	CNX GAS COMPANY LLC AND NOBLE ENERGY, INC.	PARTIAL ASSIGNMENT (32%)	712	848
				CNX GAS COMPANY LLC	NOBLE ENERGY, INC.	ASSIGNMENT	717	1
				NOBLE ENERGY, INC.	HG ENERGY II APPALACHIA, LLC	ASSIGNMENT	722	139



4704105715

		03-006C-0023-0010, 03-006C-0021-0000		NOBLE ENERGY, INC.	HG ENERGY II APPALACHIA, LLC	ASSIGNMENT	722	170
				DOMINION TRANSMISSION, INC.	DOMINION ENERGY TRANSMISSION, INC.	MERGER/NAME CHANGE	WVSOS	
				DOMINION ENERGY TRANSMISSION, INC.	HG ENERGY II APPALACHIA, LLC	SECOND AMENDMENT TO MEMORANDUM OF FARMOUT AGREEMENT	723	499
				DOMINION ENERGY TRANSMISSION, INC.	HG ENERGY II APPALACHIA, LLC	THIRD AMENDMENT TO MEMORANDUM OF FARMOUT AGREEMENT	734	558
				DOMINION ENERGY TRANSMISSION, INC.	HG ENERGY II APPALACHIA, LLC	ASSIGNMENT (68%)	736	220
				J. S. NORRIS	SOUTH PENN OIL COMPANY	NOT LESS THAN 1/8	42	121
				SOUTH PENN OIL COMPANY	HOPE NATURAL GAS COMPANY	ASSIGNMENT	85	122
				HOPE NATURAL GAS COMPANY	RESERVE GAS COMPANY	ASSIGNMENT	79	370
				RESERVE GAS COMPANY	HOPE NATURAL GAS COMPANY	CONFIRMATORY DEED	155	202
				HOPE NATURAL GAS COMPANY	CONSOLIDATED GAS SUPPLY CORPORATION	CONFIRMATORY DEED	294	89
				CONSOLIDATED GAS SUPPLY CORPORATION	CONSOLIDATED GAS TRANSMISSION CORPORATION	ASSIGNMENT	425	127
				CONSOLIDATED GAS TRANSMISSION CORPORATION	CNG TRANSMISSION CORPORATION	MERGER/NAME CHANGE	WVSOS	
				CNG TRANSMISSION CORPORATION	DOMINION TRANSMISSION, INC.	MERGER/NAME CHANGE	WVSOS	
				DOMINION TRANSMISSION, INC.	CNX GAS COMPANY LLC	MEMORANDUM OF FARMOUT AGREEMENT	672	154
				CNX GAS COMPANY LLC	NOBLE ENERGY, INC.	LIMITED PARTIAL ASSIGNMENT (50%)	684	57
				DOMINION TRANSMISSION, INC.	CNX GAS COMPANY LLC AND NOBLE ENERGY, INC.	PARTIAL ASSIGNMENT (32%)	712	848
				CNX GAS COMPANY LLC	NOBLE ENERGY, INC.	ASSIGNMENT	717	1
				NOBLE ENERGY, INC.	HG ENERGY II APPALACHIA, LLC	ASSIGNMENT	722	139
9	FK053129	03-006C-0021-0000, 03-006C-0002-0000, 03-006C-0019-0000	Q100767000 053435 FEE					

RECEIVED  
Office of Oil and Gas  
MAY 27 2021  
WV Department of  
Environmental Protection

				NOBLE ENERGY, INC.	HG ENERGY II APPALACHIA, LLC	ASSIGNMENT	722	170				
				DOMINION TRANSMISSION, INC.	DOMINION ENERGY TRANSMISSION, INC.	MERGER/NAME CHANGE	WVSOS					
				DOMINION ENERGY TRANSMISSION, INC.	HG ENERGY II APPALACHIA, LLC	SECOND AMENDMENT TO MEMORANDUM OF FARMOUT AGREEMENT	723	499				
				DOMINION ENERGY TRANSMISSION, INC.	HG ENERGY II APPALACHIA, LLC	THIRD AMENDMENT TO MEMORANDUM OF FARMOUT AGREEMENT	734	558				
				DOMINION ENERGY TRANSMISSION, INC.	HG ENERGY II APPALACHIA, LLC	ASSIGNMENT (68%)	736	220				
11	FK053265	03-006C-0020-0000 03-006C-0018-0000 03-006C-0010-0000 03-006C-0011-0000 03-006C-0012-0000 03-006C-0017-0000 03-006C-0014-0000 03-006C-0013-0000 03-006C-0016-0000 03-006C-0033-0000 03-006C-0034-0000 03-006C-0031-0000 03-006C-0029-0000 03-006C-0027-0001 03-006C-0027-0002 03-006C-0027-0000	Q101028000 053390 FEE 053429 FEE	ABRAHAM GASTON	RESERVE GAS COMPANY	NOT LESS THAN 1/8	68	517				
				RESERVE GAS COMPANY	HOPE NATURAL GAS COMPANY	CONFIRMATORY DEED	155	202				
				HOPE NATURAL GAS COMPANY	CONSOLIDATED GAS SUPPLY CORPORATION	CONFIRMATORY DEED	294	89				
				CONSOLIDATED GAS SUPPLY CORPORATION	CONSOLIDATED GAS TRANSMISSION CORPORATION	ASSIGNMENT	425	127				
				CONSOLIDATED GAS TRANSMISSION CORPORATION	CNG TRANSMISSION CORPORATION	MERGER/NAME CHANGE	WVSOS					
				CNG TRANSMISSION CORPORATION	DOMINION TRANSMISSION, INC.	MERGER/NAME CHANGE	WVSOS					
				DOMINION TRANSMISSION, INC.	CNX GAS COMPANY LLC	MEMORANDUM OF FARMOUT AGREEMENT	672	154				
				CNX GAS COMPANY LLC	NOBLE ENERGY, INC.	LIMITED PARTIAL ASSIGNMENT (50%)	684	57				
				DOMINION TRANSMISSION, INC.	CNX GAS COMPANY LLC AND NOBLE ENERGY, INC.	PARTIAL ASSIGNMENT (32%)	712	848				
				CNX GAS COMPANY LLC	NOBLE ENERGY, INC.	ASSIGNMENT	717	1				
				NOBLE ENERGY, INC.	HG ENERGY II APPALACHIA, LLC	ASSIGNMENT	722	139				
				NOBLE ENERGY, INC.	HG ENERGY II APPALACHIA, LLC	ASSIGNMENT	722	170				
				DOMINION TRANSMISSION, INC.	DOMINION ENERGY TRANSMISSION, INC.	MERGER/NAME CHANGE	WVSOS					
				DOMINION ENERGY TRANSMISSION, INC.	HG ENERGY II APPALACHIA, LLC	SECOND AMENDMENT TO MEMORANDUM OF FARMOUT AGREEMENT	723	499				
				DOMINION ENERGY TRANSMISSION, INC.	HG ENERGY II APPALACHIA, LLC	THIRD AMENDMENT TO MEMORANDUM OF FARMOUT AGREEMENT	734	558				
				DOMINION ENERGY TRANSMISSION, INC.	HG ENERGY II APPALACHIA, LLC	ASSIGNMENT (68%)	736	220				
				34	FK064203	03-006C-0016-0000	Q100553000	CHAS. S. PAUGH, ROSCOE H. JACKSON, CHAS. E. ATKINS, BERTHA RADCLIFFE, AND MONA E. CARPENTER, TRUSTEES OF THE VALLEY CHAPEL EVANGELISTICAL UNITED BRETHREN CHURCH	HOPE NATURAL GAS COMPANY	NOT LESS THAN 1/8	219	510
								HOPE NATURAL GAS COMPANY	CONSOLIDATED GAS SUPPLY CORPORATION	CONFIRMATORY DEED	294	89
								CONSOLIDATED GAS SUPPLY CORPORATION	CONSOLIDATED GAS TRANSMISSION CORPORATION	ASSIGNMENT	425	127
								CONSOLIDATED GAS TRANSMISSION CORPORATION	CNG TRANSMISSION CORPORATION	MERGER/NAME CHANGE	WVSOS	
CNG TRANSMISSION CORPORATION	DOMINION TRANSMISSION, INC.	MERGER/NAME CHANGE	WVSOS									
DOMINION TRANSMISSION, INC.	CNX GAS COMPANY LLC	MEMORANDUM OF FARMOUT AGREEMENT	672					154				
CNX GAS COMPANY LLC	NOBLE ENERGY, INC.	LIMITED PARTIAL ASSIGNMENT (50%)	684					57				
DOMINION TRANSMISSION, INC.	CNX GAS COMPANY LLC AND NOBLE ENERGY, INC.	PARTIAL ASSIGNMENT (32%)	712					848				
CNX GAS COMPANY LLC	NOBLE ENERGY, INC.	ASSIGNMENT	717					1				
NOBLE ENERGY, INC.	HG ENERGY II APPALACHIA, LLC	ASSIGNMENT	722					139				
NOBLE ENERGY, INC.	HG ENERGY II APPALACHIA, LLC	ASSIGNMENT	722					170				
DOMINION TRANSMISSION, INC.	DOMINION ENERGY TRANSMISSION, INC.	MERGER/NAME CHANGE	WVSOS									
DOMINION ENERGY TRANSMISSION, INC.	HG ENERGY II APPALACHIA, LLC	SECOND AMENDMENT TO MEMORANDUM OF FARMOUT AGREEMENT	723					499				
DOMINION ENERGY TRANSMISSION, INC.	HG ENERGY II APPALACHIA, LLC	THIRD AMENDMENT TO MEMORANDUM OF FARMOUT AGREEMENT	734					558				
DOMINION ENERGY TRANSMISSION, INC.	HG ENERGY II APPALACHIA, LLC	ASSIGNMENT (68%)	736	220								
16	FK053173	03-006C-0027-0001 03-006C-0027-0002 03-006C-0027-0003 03-006C-0027-0004 03-006C-0030-0000 03-006C-0043-0000	Q100671000	GEORGE NORRIS AND LAURA B. NORRIS, HIS WIFE	SOUTH PENN OIL COMPANY	NOT LESS THAN 1/8	42	124				
				SOUTH PENN OIL COMPANY	HOPE NATURAL GAS COMPANY	ASSIGNMENT	85	127				
				HOPE NATURAL GAS COMPANY	CONSOLIDATED GAS SUPPLY CORPORATION	CONFIRMATORY DEED	294	89				
				CONSOLIDATED GAS SUPPLY CORPORATION	CONSOLIDATED GAS TRANSMISSION CORPORATION	ASSIGNMENT	425	127				
				CONSOLIDATED GAS TRANSMISSION CORPORATION	CNG TRANSMISSION CORPORATION	MERGER/NAME CHANGE	WVSOS					
				CNG TRANSMISSION CORPORATION	DOMINION TRANSMISSION, INC.	MERGER/NAME CHANGE	WVSOS					
				DOMINION TRANSMISSION, INC.	CNX GAS COMPANY LLC	MEMORANDUM OF FARMOUT AGREEMENT	672	154				
				CNX GAS COMPANY LLC	NOBLE ENERGY, INC.	LIMITED PARTIAL ASSIGNMENT (50%)	684	57				
				DOMINION TRANSMISSION, INC.	CNX GAS COMPANY LLC AND NOBLE ENERGY, INC.	PARTIAL ASSIGNMENT (32%)	712	848				
				CNX GAS COMPANY LLC	NOBLE ENERGY, INC.	ASSIGNMENT	717	1				
				NOBLE ENERGY, INC.	HG ENERGY II APPALACHIA, LLC	ASSIGNMENT	722	139				

RECEIVED  
Office of Oil and Gas  
MAY 27 2021

WV Department of  
Environmental Protection

		p/o 03-006C-0043-0001		NOBLE ENERGY, INC.	HG ENERGY II APPALACHIA, LLC	ASSIGNMENT	722	170
				DOMINION TRANSMISSION, INC.	DOMINION ENERGY TRANSMISSION, INC.	MERGER/NAME CHANGE	WVSOS	
				DOMINION ENERGY TRANSMISSION, INC.	HG ENERGY II APPALACHIA, LLC	SECOND AMENDMENT TO MEMORANDUM OF FARMOUT AGREEMENT	723	499
				DOMINION ENERGY TRANSMISSION, INC.	HG ENERGY II APPALACHIA, LLC	THIRD AMENDMENT TO MEMORANDUM OF FARMOUT AGREEMENT	734	558
				DOMINION ENERGY TRANSMISSION, INC.	HG ENERGY II APPALACHIA, LLC	ASSIGNMENT (68%)	736	220
12	FK053269	03-006C-0028-0000 03-006C-0029-0000 03-006C-0032-0000 03-006C-0032-0001 p/o 03-006C-0031-0000 p/o 03-006C-0043-0000	Q100338000	C. L. HITT, B. J. HITT, S. A. HITT, ELIZA A. HITT, AND LUCY M. HITT	RESERVE GAS COMPANY	NOT LESS THAN 1/8	68	523
				RESERVE GAS COMPANY	HOPE NATURAL GAS COMPANY	CONFIRMATORY DEED	155	202
				HOPE NATURAL GAS COMPANY	CONSOLIDATED GAS SUPPLY CORPORATION	CONFIRMATORY DEED	294	89
				CONSOLIDATED GAS SUPPLY CORPORATION	CONSOLIDATED GAS TRANSMISSION CORPORATION	ASSIGNMENT	425	127
				CONSOLIDATED GAS TRANSMISSION CORPORATION	CNG TRANSMISSION CORPORATION	MERGER/NAME CHANGE	WVSOS	
				CNG TRANSMISSION CORPORATION	DOMINION TRANSMISSION, INC.	MERGER/NAME CHANGE	WVSOS	
				DOMINION TRANSMISSION, INC.	CNX GAS COMPANY LLC	MEMORANDUM OF FARMOUT AGREEMENT	672	154
				CNX GAS COMPANY LLC	NOBLE ENERGY, INC.	LIMITED PARTIAL ASSIGNMENT (50%)	684	57
				DOMINION TRANSMISSION, INC.	CNX GAS COMPANY LLC AND NOBLE ENERGY, INC.	PARTIAL ASSIGNMENT (32%)	712	848
				CNX GAS COMPANY LLC	NOBLE ENERGY, INC.	ASSIGNMENT	717	1
				NOBLE ENERGY, INC.	HG ENERGY II APPALACHIA, LLC	ASSIGNMENT	722	139
				NOBLE ENERGY, INC.	HG ENERGY II APPALACHIA, LLC	ASSIGNMENT	722	170
				DOMINION TRANSMISSION, INC.	DOMINION ENERGY TRANSMISSION, INC.	MERGER/NAME CHANGE	WVSOS	
				DOMINION ENERGY TRANSMISSION, INC.	HG ENERGY II APPALACHIA, LLC	SECOND AMENDMENT TO MEMORANDUM OF FARMOUT AGREEMENT	723	499
				DOMINION ENERGY TRANSMISSION, INC.	HG ENERGY II APPALACHIA, LLC	THIRD AMENDMENT TO MEMORANDUM OF FARMOUT AGREEMENT	734	558
				DOMINION ENERGY TRANSMISSION, INC.	HG ENERGY II APPALACHIA, LLC	ASSIGNMENT (68%)	736	220
18	FK064858	p/o 03-006C-0035-0000 03-006C-0036-0000 03-006C-0037-0000 03-006C-0038-0000 03-006C-0038-0001 03-006C-0040-0000 03-006C-0040-0001 03-006C-0041-0000 03-006C-0042-0000 03-006D-0024-0000 03-006D-0025-0000 03-006D-0025-0002 03-006D-0026-0000 03-006D-0026-0001 03-006D-0027-0001 03-006D-0028-0000 03-006D-0029-0000 03-006D-0029-0001 03-006D-0030-0000 03-006D-0030-0001 03-006D-0031-0000 03-006D-0032-0000 03-006D-0032-0001 03-006D-0033-0000 03-006D-0034-0000 03-006D-0034-0001 03-006D-0035-0000	Q100600000	W. E. CARPENTER AND MONA E. CARPENTER, HIS WIFE; C. W. SHUTTS AND MARGARET SHUTTS, HIS WIFE, EACH IN THEIR OWN RIGHT; CREED L. SHUTTS AND MONA LEE SHUTTS, HIS WIFE, EACH IN THEIR OWN RIGHT; CREED L. SHUTTS AND MONA LEE SHUTTS, HIS WIFE; NINA G. ALLEN, WIDOW; VIRGINIA Y. G. MCMULLEN AND T. F. MCMULLEN, HER HUSBAND; EDWARD D. CARPENTER AND VICTORIA M. CARPENTER, HIS WIFE; ARTHUR D. CARPENTER AND GLORIA R. CARPENTER, HIS WIFE; AND STARK D. CARPENTER AND DAISY M. CARPENTER, HIS WIFE	HOPE NATURAL GAS COMPANY	NOT LESS THAN 1/8	224	248
				HOPE NATURAL GAS COMPANY	CONSOLIDATED GAS SUPPLY CORPORATION	CONFIRMATORY DEED	294	89
				CONSOLIDATED GAS SUPPLY CORPORATION	CONSOLIDATED GAS TRANSMISSION CORPORATION	ASSIGNMENT	425	127
				CONSOLIDATED GAS TRANSMISSION CORPORATION	CNG TRANSMISSION CORPORATION	MERGER/NAME CHANGE	WVSOS	
				CNG TRANSMISSION CORPORATION	DOMINION TRANSMISSION, INC.	MERGER/NAME CHANGE	WVSOS	
				DOMINION TRANSMISSION, INC.	CNX GAS COMPANY LLC	MEMORANDUM OF FARMOUT AGREEMENT	672	154
				DOMINION TRANSMISSION, INC.	CNX GAS COMPANY LLC AND NOBLE ENERGY, INC.	PARTIAL ASSIGNMENT (32%)	712	848
				CNX GAS COMPANY LLC	NOBLE ENERGY, INC.	ASSIGNMENT	717	1
				NOBLE ENERGY, INC.	HG ENERGY II APPALACHIA, LLC	ASSIGNMENT	722	139
				DOMINION TRANSMISSION, INC.	DOMINION ENERGY TRANSMISSION, INC.	MERGER/NAME CHANGE	WVSOS	
				DOMINION ENERGY TRANSMISSION, INC.	HG ENERGY II APPALACHIA, LLC	SECOND AMENDMENT TO MEMORANDUM OF FARMOUT AGREEMENT	723	499
				DOMINION ENERGY TRANSMISSION, INC.	HG ENERGY II APPALACHIA, LLC	THIRD AMENDMENT TO MEMORANDUM OF FARMOUT AGREEMENT	734	558
				DOMINION ENERGY TRANSMISSION, INC.	HG ENERGY II APPALACHIA, LLC	ASSIGNMENT (68%)	736	220
				MARGARET F. SHUTTS	HOPE NATURAL GAS COMPANY	NOT LESS THAN 1/8	242	214
				HOPE NATURAL GAS COMPANY	CONSOLIDATED GAS SUPPLY CORPORATION	CONFIRMATORY DEED	294	89
				CONSOLIDATED GAS SUPPLY CORPORATION	CONSOLIDATED GAS TRANSMISSION CORPORATION	ASSIGNMENT	425	127
				CONSOLIDATED GAS TRANSMISSION CORPORATION	CNG TRANSMISSION CORPORATION	MERGER/NAME CHANGE	WVSOS	
				CNG TRANSMISSION CORPORATION	DOMINION TRANSMISSION, INC.	MERGER/NAME CHANGE	WVSOS	
				DOMINION TRANSMISSION, INC.	CNX GAS COMPANY LLC	MEMORANDUM OF FARMOUT AGREEMENT	672	154

RECEIVED  
 Office of Oil and Gas  
 MAY 27 2010  
 WV Department of Environmental Protection

#61  
 Recorded on Plat of Previously Issued Permit = 47-041-05715, 1-29-2021

61	FK066646	03-006D-0023-0000	Q100313000	CNX GAS COMPANY LLC	NOBLE ENERGY, INC.	LIMITED PARTIAL ASSIGNMENT (50%)	684	57				
				DOMINION TRANSMISSION, INC.	CNX GAS COMPANY LLC AND NOBLE ENERGY, INC.	PARTIAL ASSIGNMENT (32%)	712	848				
				CNX GAS COMPANY LLC	NOBLE ENERGY, INC.	ASSIGNMENT	717	1				
				NOBLE ENERGY, INC.	HG ENERGY II APPALACHIA, LLC	ASSIGNMENT	722	139				
				DOMINION TRANSMISSION, INC.	DOMINION ENERGY TRANSMISSION, INC.	MERGER/NAME CHANGE	WVSOS					
				DOMINION ENERGY TRANSMISSION, INC.	HG ENERGY II APPALACHIA, LLC	SECOND AMENDMENT TO MEMORANDUM OF FARMOUT AGREEMENT	723	499				
				DOMINION ENERGY TRANSMISSION, INC.	HG ENERGY II APPALACHIA, LLC	THIRD AMENDMENT TO MEMORANDUM OF FARMOUT AGREEMENT	734	558				
				DOMINION ENERGY TRANSMISSION, INC.	HG ENERGY II APPALACHIA, LLC	ASSIGNMENT (68%)	736	220				
				32	072750 072908	03-006D-0037-0000 03-006D-0038-0000 03-006D-0038-0001 03-006D-0044-0000 p/o 03-006D-0053-0000 03-006D-0054-0000	CNXDVO11667	CHARLES R. KEMPER AND ELEANOR JANE KEMPER, HUSBAND AND WIFE	HOPE NATURAL GAS COMPANY	NOT LESS THAN 1/8	286	665
								ORIS M. BUTCHER AND WILLIAM L. BUTCHER, HER HUSBAND; EULA G. KEISTER LOWTHER AND OREN C. LOWTHER, HER HUSBAND; MARK E. KEISTER AND ETHEL B. KEISTER, HIS WIFE; VERE BUTCHER AND A. S. BUTCHER, HER HUSBAND; VIRGIL W. BUTCHER AND BERNICE BUTCHER, HIS WIFE; LOTTIE L. COLLIER, A MARRIED WOMAN, THELMA BUTCHER AND BURL BUTCHER, HER HUSBAND	HOPE NATURAL GAS COMPANY	NOT LESS THAN 1/8	288	281
HOPE NATURAL GAS COMPANY	CONSOLIDATED GAS SUPPLY CORPORATION	CONFIRMATORY DEED	294					89				
CONSOLIDATED GAS SUPPLY CORPORATION	CONSOLIDATED GAS TRANSMISSION CORPORATION	ASSIGNMENT	425					127				
CONSOLIDATED GAS TRANSMISSION CORPORATION	CNG TRANSMISSION CORPORATION	MERGER/NAME CHANGE	WVSOS									
CNG TRANSMISSION CORPORATION	DOMINION TRANSMISSION, INC.	MERGER/NAME CHANGE	WVSOS									
DOMINION TRANSMISSION, INC.	CONSOL Energy Holdings LLC XVI	ASSIGNMENT	651					318				
DOMINION TRANSMISSION, INC.	CNX GAS COMPANY LLC	AMENDED ASSIGNMENT	658					715				
Consol Energy Holdings XVI	CNX GAS COMPANY LLC	MERGER/NAME CHANGE	1472					294				
CNX GAS COMPANY LLC	HG ENERGY II APPALACHIA, LLC	ASSIGNMENT	766					352				
37	FEEHGI0040 FEEHGI0035	03-006D-0001-0000 03-006D-0027-0000 03-006D-0028-0000 03-006D-0028-0001 03-006D-0028-0002 03-006D-0021-0000 03-006D-0022-0000 03-006D-0022-0001 03-006D-0055-0000 thru 03-006D-0059-0000 03-006D-0059-0001 03-006D-0060-0000	CNX - MISC 939	JOHN W NORRIS	SOUTH PENN OIL COMPANY	NOT LESS THAN 1/8	42	119				
				SOUTH PENN OIL COMPANY	HOPE NATURAL GAS COMPANY	ASSIGNMENT	85	127				
				HOPE NATURAL GAS COMPANY	RESERVE GAS COMPANY	ASSIGNMENT	79	370				
				RESERVE GAS COMPANY	HOPE NATURAL GAS COMPANY	CONFIRMATORY DEED	155	202				
				HOPE NATURAL GAS COMPANY	CONSOLIDATED GAS SUPPLY CORPORATION	CONFIRMATORY DEED	294	89				
				CONSOLIDATED GAS SUPPLY CORPORATION	CONSOLIDATED GAS TRANSMISSION CORPORATION	ASSIGNMENT	425	127				
				CONSOLIDATED GAS TRANSMISSION CORPORATION	CNG TRANSMISSION CORPORATION	MERGER/NAME CHANGE	WVSOS					
				CNG TRANSMISSION CORPORATION	DOMINION TRANSMISSION, INC.	MERGER/NAME CHANGE	WVSOS					
				DOMINION TRANSMISSION INC	CNX GAS COMPANY LLC	ASSIGNMENT	658	715				
				CNX GAS COMPANY LLC	HG ENERGY II APPALACHIA, LLC	ASSIGNMENT	766	352				
41	DAD37526001-008	03-006D-0085-0000 THRU 03-006D-0085-0007 03-006D-0090-0001 03-006D-0090-0002		MARTHA S. CARPENTER AND HUBERT CARPENTER	SCOTT OIL CO	NOT LESS THAN 1/8	455	676				
				AMY B. DENT AND CLIFFORD DENT	SCOTT OIL CO	NOT LESS THAN 1/8	455	678				
				PAUL B. LOSH AND ZETRA M. LOSH	SCOTT OIL CO	NOT LESS THAN 1/8	455	680				
				DONALD L. BUTCHER AND KATHRYN BUTCHER	SCOTT OIL CO	NOT LESS THAN 1/8	455	682				
				DOUGLAS D. BUTCHER	SCOTT OIL CO	NOT LESS THAN 1/8	455	686				
				LETHA D. BUTCHER	SCOTT OIL CO	NOT LESS THAN 1/8	455	688				
				RONALD C. BUTCHER AND VIRGIE BUTCHER	SCOTT OIL CO	NOT LESS THAN 1/8	456	681				
				SCOTT OIL COMPANY AND JAMES F. SCOTT	DOMINION ENERGY, INC	PARTIAL ASSIGNMENT (85%)	468	592				
				SCOTT OIL COMPANY	EMAX OIL COMPANY	ASSIGNMENT	486	162				
				DOMINION ENERGY, INC.	CONSOL ENERGY HOLDINGS LLC XVI	MERGER/NAME CHANGE	9	471				
CONSOL ENERGY HOLDINGS LLC XVI	CONSOL GAS COMPANY	MERGER/NAME CHANGE	9	471								
CONSOL GAS COMPANY	CNX GAS COMPANY	MERGER/NAME CHANGE	9	471								
CNX GAS COMPANY LLC	NOBLE ENERGY, INC.	PARTIAL ASSIGNMENT (50%)	659	521								
EMAX OIL COMPANY AND JAMES F. SCOTT	EMAX GAS COMPANY	DEED	671	376								
EMAX GAS COMPANY	CNX GAS COMPANY LLC	ASSIGNMENT	716	574								
CNX GAS COMPANY LLC	NOBLE ENERGY, INC.	ASSIGNMENT	717	1								
NOBLE ENERGY, INC.	HG ENERGY II APPALACHIA, LLC	ASSIGNMENT	722	170								

42	NO CTO	03-006D-0046-0000 03-006D-0086-0000 03-006D-0088-0000 etal	CNX080265	HAZEL L. BENNETT ET AL	CONSOLIDATED GAS SUPPLY CORPORATION	NOT LESS THAN 1/8	321	262
				CONSOLIDATED GAS SUPPLY CORPORATION	CONSOLIDATED GAS TRANSMISSION CORPORATION	ASSIGNMENT	425	127
				CONSOLIDATED GAS TRANSMISSION CORPORATION	CNG TRANSMISSION CORPORATION	MERGER/NAME CHANGE	WVSOS	
				CNG TRANSMISSION CORPORATION	DOMINION TRANSMISSION, INC.	MERGER/NAME CHANGE	9	628
				DOMINION TRANSMISSION, INC.	CONSOL ENERGY HOLDINGS LLC XVI	ASSIGNMENT	651	318
				CONSOL ENERGY HOLDINGS LLC XVI	CONSOL GAS COMPANY	MERGER/NAME CHANGE	9	471
				CONSOL GAS COMPANY	CNX GAS COMPANY LLC	MERGER/NAME CHANGE	9	471
				CNX GAS COMPANY LLC	NOBLE ENERGY, INC.	LIMITED PARTIAL ASSIGNMENT (50%)	659	521
				CNX GAS COMPANY LLC	NOBLE ENERGY, INC.	ASSIGNMENT	717	1
				NOBLE ENERGY, INC.	HG ENERGY II APPALACHIA, LLC	ASSIGNMENT	722	170
				MIKE F. TIERNEY, JR., AND MARJORIE TIERNEY, HIS WIFE	JAMES F. SCOTT	NOT LESS THAN 1/8	394	413
				JAMES EDWARD TIERNEY AND LUCIE JANE TIERNEY, HIS WIFE	JAMES F. SCOTT	NOT LESS THAN 1/8	394	411
				COLETTE DANEK AND GEORGE DANEK, HER HUSBAND	JAMES F. SCOTT	NOT LESS THAN 1/8	394	40
				CATHERINE T. SLEETH AND T. J. SLEETH, JR., HER HUSBAND	JAMES F. SCOTT	NOT LESS THAN 1/8	394	399
PATRICIA PROCTER	JAMES F. SCOTT	NOT LESS THAN 1/8	394	397				
MARTHA TIERNEY, INDIVIDUALLY AND FOR COLLETTE TIERNEY, KIMBERLY TIERNEY, AND DAVID TIERNEY, HER CHILDREN	JAMES F. SCOTT	NOT LESS THAN 1/8	394	405				
JUDITH BEESON AND LARRY D. BEESON, HER HUSBAND	JAMES F. SCOTT	NOT LESS THAN 1/8	394	407				
NICK TIERNEY AND CAROL TIERNEY, HIS WIFE	JAMES F. SCOTT	NOT LESS THAN 1/8	394	409				
ELLEN MYERS AND DALE MYERS, HER HUSBAND	JAMES F. SCOTT	NOT LESS THAN 1/8	394	409				
THOMAS GRAVES	JAMES F. SCOTT	NOT LESS THAN 1/8	396	553				
ANN GRAVES WALKER AND MICHAEL J. WALKER, HER HUSBAND	JAMES F. SCOTT	NOT LESS THAN 1/8	403	702				
THOMAS GRAVES, SR., AND LENA GRAVES, HIS WIFE	JAMES F. SCOTT	NOT LESS THAN 1/8	403	700				
CATHY GRAVES	JAMES F. SCOTT	NOT LESS THAN 1/8	403	704				
LOUISE G. PARRISH AND L. WAYNE PARRISH, HER HUSBAND	JAMES F. SCOTT	NOT LESS THAN 1/8	411	235				
SCOTT OIL COMPANY INC, AND JAMES F. SCOTT AND JEAN H. SCOTT, HUSBAND AND WIFE	CONVEST ENERGY CORPORATION	PARTIAL ASSIGNMENT (35%)	419	543				
SCOTT OIL COMPANY INC, AND JAMES F. SCOTT AND JEAN H. SCOTT, HUSBAND AND WIFE	CONVEST 1982-B INCOME PROGRAM	PARTIAL ASSIGNMENT (25%)	419	550				
SCOTT OIL COMPANY INC, AND JAMES F. SCOTT AND JEAN H. SCOTT, HUSBAND AND WIFE	CONVEST 1982-C INCOME PROGRAM	PARTIAL ASSIGNMENT (40%)	419	557				
CONVEST ENERGY CORPORATION	CONVEST 1982-B INCOME PROGRAM AND CONVEST INCOME PROGRAM VII	ASSIGNMENT	421	218				
CONVEST 1982-C INCOME PROGRAM	CONVEST PRODUCTION COMPANY	ASSIGNMENT	439	654				
CONVEST INCOME PROGRAM VII-A	CONVEST PRODUCTION COMPANY	ASSIGNMENT	439	677				
CONVEST 1982-B INCOME PROGRAM	CONVEST PRODUCTION COMPANY	ASSIGNMENT	439	700				
JAMES F. SCOTT, SCOTT OIL AND GAS COMPANY INC, CONVEST ENERGY CORPORATION, CONVEST 1980-II ENERGY INCOME PROGRAM, CONVEST 1982-B INCOME PROGRAM, CONVEST 1982-C INCOME PROGRAM, AND CONVEST INCOME PROGRAM VII AKA CONVEST INCOME PROGRAM VII-A	CONVEST PRODUCTION COMPANY	ASSIGNMENT	460	483				
CONVEST PRODUCTION COMPANY	BNG, INC	ASSIGNMENT	460	494				
BNG, INC	STONEWALL GAS COMPANY	UNRECORDED	522	320				
STONEWALL GAS COMPANY	DOMINION EXPLORATION & PRODUCTION INC	ASSIGNMENT	UNRECORDED					
DOMINION EXPLORATION & PRODUCTION INC	DOMINION TRANSMISSION, INC.	ASSIGNMENT	651	137				
DOMINION TRANSMISSION, INC.	CONSOL ENERGY HOLDINGS LLC XVI	ASSIGNMENT	651	318				
CONSOL ENERGY HOLDINGS LLC XVI	CONSOL GAS COMPANY	MERGER/NAME CHANGE	9	471				
CONSOL GAS COMPANY	CNX GAS COMPANY	MERGER/NAME CHANGE	9	471				
CNX GAS COMPANY LLC	NOBLE ENERGY, INC.	PARTIAL ASSIGNMENT	659	521				
CNX GAS COMPANY LLC	NOBLE ENERGY, INC.	ASSIGNMENT	717	1				
NOBLE ENERGY, INC.	HG ENERGY II APPALACHIA, LLC	ASSIGNMENT	722	170				

RECEIVED  
 Office of Oil and Gas  
 MAY 27 2021  
 WV Department of  
 Environmental Protection



**HG Energy, LLC**  
5260 Dupont Road  
Parkersburg, WV 26101  
(304) 420-1100 - Office  
(304) 863-3172 - Fax

4704105715

RECEIVED  
Office of Oil and Gas

MAY 27 2021

WV Department of  
Environmental Protection

May 13, 2021

WV DEP  
Division of Oil & Gas  
Attn: Kelly Kees  
601 57<sup>th</sup> Street  
Charleston, West Virginia 25304

RE: Flesher 1212 S-5H Request for Permit Revision – (47-041-05715)  
Freemans Creek District, Lewis County, West Virginia  
**Request for Modification Due to Acquiring Additional Leases**

Dear Ms. Kees -

Per our discussions, enclosed are revised forms (survey plat, mylar, WW-6B, casing schematic, and WW6A-1) for the requested 1212 S-5H well work permit revision. Also included is a check to cover the cost of requesting a modification for an existing permit. We ask the permit be modified to reflect additional leases acquired to length the lateral.

Please let me know if you have any questions or require additional information. I can be reached at (304) 420-1119 or [dwhite@hgenergyllc.com](mailto:dwhite@hgenergyllc.com).

Very truly yours,

*Diane White*

Diane C. White

Enclosures

cc: Sam Ward – DEP State Inspector

06/11/2021