



---

west virginia department of environmental protection

---

Office of Oil and Gas  
601 57<sup>th</sup> Street, S.E.  
Charleston, WV 25304  
(304) 926-0450  
fax: (304) 926-0452

Harold D. Ward, Cabinet Secretary  
[www.dep.wv.gov](http://www.dep.wv.gov)

Monday, June 28, 2021  
PERMIT MODIFICATION APPROVAL  
Horizontal 6A / New Drill

HG ENERGY II APPALACHIA, LLC  
5260 DUPONT ROAD

PARKERSBURG, WV 26101

Re: Permit Modification Approval for FLESHER 1212 S-8H  
47-041-05717-00-00

**Lateral Extension**

HG ENERGY II APPALACHIA, LLC

The Office of Oil and Gas has reviewed the attached permit modification for the above referenced permit. The attached modification has been approved and well work may begin. Please be reminded that the oil and gas inspector is to be notified twenty-four (24) hours before permitted well work is commenced.

If there are any questions, please feel free to contact me at (304) 926- 0450.

James A. Martin  
Chief

Operator's Well Number: FLESHER 1212 S-8H  
Farm Name: FLESHER  
U.S. WELL NUMBER: 47-041-05717-00-00  
Horizontal 6A New Drill  
Date Modification Issued: June 28, 2021

Promoting a healthy environment.

07/02/2021



**HG Energy, LLC**  
5260 Dupont Road  
Parkersburg, WV 26101  
(304) 420-1100 - Office  
(304) 863-3172 - Fax

June 3, 2021

WV DEP  
Division of Oil & Gas  
Attn: Kelly Kees  
601 57<sup>th</sup> Street  
Charleston, West Virginia 25304

RECEIVED  
Office of Oil and Gas

JUN 07 2021

WV Department of  
Environmental Protection

RE: Flesher 1212 S-8H Request for Permit Revision – (47-041-05717)  
Freemans Creek District, Lewis County, West Virginia  
**Request for Modification Due to Acquiring Additional Leases**

Dear Ms. Kees -

Per our discussions, enclosed are revised forms (survey plat, mylar, WW-6B, casing schematic, and WW6A-1) for the requested 1212 S-8H well work permit revision. We ask the permit be modified to reflect additional leases acquired to length the lateral.

Please let me know if you have any questions or require additional information. I can be reached at (304) 420-1119 or [dwhite@hgenergyllc.com](mailto:dwhite@hgenergyllc.com).

Very truly yours,

*Diane White*

Diane C. White

Enclosures

cc: Sam Ward - DEP State Inspector

07/02/2021

WW-6B  
(04/15)

API NO. 47- 041 - 05717  
OPERATOR WELL NO. Flesher 1212 S-8H  
Well Pad Name: Flesher 1212

STATE OF WEST VIRGINIA  
DEPARTMENT OF ENVIRONMENTAL PROTECTION, OFFICE OF OIL AND GAS  
WELL WORK PERMIT APPLICATION

1) Well Operator: HG Energy II Appalachia, L.P. 494519932 Lewis Freeman Weston 7.5'  
Operator ID County District Quadrangle

2) Operator's Well Number: Flesher 1212 S-8H Well Pad Name: Flesher 1212

3) Farm Name/Surface Owner: Flesher Public Road Access: SR19 to Kincheloe Run Rd to Valley Chapel Rd

4) Elevation, current ground: 1338' Elevation, proposed post-construction: 1332'

5) Well Type (a) Gas  Oil  Underground Storage   
Other

(b) If Gas Shallow  Deep   
Horizontal

6) Existing Pad: Yes or No No

7) Proposed Target Formation(s), Depth(s), Anticipated Thickness and Expected Pressure(s):  
Marcellus at 6845'/6927' and 82' in thickness. Anticipated pressure at 4314#.

8) Proposed Total Vertical Depth: 6913'

9) Formation at Total Vertical Depth: Marcellus

10) Proposed Total Measured Depth: 23486'

11) Proposed Horizontal Leg Length: 15709'

12) Approximate Fresh Water Strata Depths: 105', 273', 302'

13) Method to Determine Fresh Water Depths: Nearest offset well data, (47-041-5338, 0218)

14) Approximate Saltwater Depths: 1028' (Nearest offset well data, 47-041-1673)

15) Approximate Coal Seam Depths: 420', 525' 830' (Surface casing is being extended to cover the coal in the DTI Storage Field)

16) Approximate Depth to Possible Void (coal mine, karst, other): None

17) Does Proposed well location contain coal seams directly overlying or adjacent to an active mine? Yes  No

(a) If Yes, provide Mine Info: Name: \_\_\_\_\_  
Depth: \_\_\_\_\_  
Seam: \_\_\_\_\_  
Owner: \_\_\_\_\_

RECEIVED  
Office of Oil and Gas  
JUN 07 2021  
WV Department of  
Environmental Protection

SDW  
6/22/2021

WW-6B  
(04/15)

API NO. 47- 041 - 05717  
 OPERATOR WELL NO. Flesher 1212 S-8H  
 Well Pad Name: Flesher 1212

18)

**CASING AND TUBING PROGRAM**

TYPE	Size (in)	New or Used	Grade	Weight per ft. (lb/ft)	FOOTAGE: For Drilling (ft)	INTERVALS: Left in Well (ft)	CEMENT: Fill-up (Cu. Ft.)/CTS
Conductor	30"	New	LS	157.5	120'	120'	Drilled In
Fresh Water/Coal	20"	NEW	J-55	94	1000'	1000'	CTS
Intermediate 1	13 3/8"	NEW	J-55 BTC	68	2100'	2100'	CTS
Intermediate 2	9 5/8"	NEW	J-55 BTC	40	2900'	2900'	CTS
Production	5 1/2"	NEW	P-110 HP	23	23486'	23486'	CTS
Tubing							
Liners							

*SDW  
6/22/2021*

TYPE	Size (in)	Wellbore Diameter (in)	Wall Thickness (in)	Burst Pressure (psi)	Anticipated Max. Internal Pressure (psi)	Cement Type	Cement Yield (cu. ft./k)
Conductor	30"	30"	.500				Drilled In
Fresh Water/Coal	20"	26"	.438	2110	1200	Type 1, Class A	40 % excess yield = 1.20, CTS
Intermediate 1	13 3/8"	17 1/2"	.480	3450		Type 1/Class A	Lead 40% excess, Tail 0% excess
Intermediate 2	9 5/8"	12 1/4"	.395	3950		Type 1/Class A	Lead 40% excess, Tail 0% excess
Production	5 1/2"	8 1/2"	.415	16240	12500	Type 1/Class A	20% excess yield = 1.19, tail yield 1.00
Tubing							
Liners							

**PACKERS**

Kind:				
Sizes:				
Depths Set:				

RECEIVED  
Office of Oil and Gas  
JUN 07 2021

WV Department of  
Environmental Protection

19) Describe proposed well work, including the drilling and plugging back of any pilot hole:

Drill the vertical depth to the Marcellus at an estimated total vertical depth of approximately 6913 feet. Drill horizontal leg to estimated 15,709' lateral length, 23,486' TMD. Hydraulically fracture stimulate and be capable of producing from the Marcellus Formation. Should we encounter an unanticipated void in the coal, we will install a minimum of 20' of casing below the void but not more than 100' below the void, set a basket and grout to surface. We plan to run an ACP above the Gantz/Dominion Storage interval to aid in sealing off and isolating the storage interval.

20) Describe fracturing/stimulating methods in detail, including anticipated max pressure and max rate:

The stimulation will be completed with multiple stages divided over the lateral length of the well. Stage spacing is dependent upon engineering design. Slickwater fracturing technique will be utilized on each stage using sand, water, and chemicals. See attached list. Maximum pressure not to exceed 12,500 psi.

21) Total Area to be disturbed, including roads, stockpile area, pits, etc., (acres): 33.17 acres

22) Area to be disturbed for well pad only, less access road (acres): 6.84 acres

23) Describe centralizer placement for each casing string:

No centralizers will be used with conductor casing.  
Freshwater/Coal - centralized every 3 joints to surface.  
Intermediate 1 - Bow Spring on every joint, will also be running ACP for isolating storage zone  
Intermediate 2 - Bow Spring on first 2 joints then every third joint to 100' from surface.  
Production - Run 1 spiral centralizer every 5 joints from the top of the curve to surface. Run 1 spiral centralizer every 3 joints from the 1st 5.5" long joint to the top of the curve.

24) Describe all cement additives associated with each cement type:

Conductor - N/A, Casing to be drilled in w/ Dual Rotary Rig.  
Fresh Water/Coal - 15.6 ppg PNE-1 + 3% bwoc CaCl<sub>2</sub> 40% Excess Yield = 1.20, CTS  
Intermediate 1 - Lead: 15.4 ppg PNE-1 + 2.5% bwoc CaCl<sub>2</sub> 40% Excess / Tail: 15.9 ppg PNE-1 + 2.5% bwoc CaCl<sub>2</sub> zero% Excess, CTS  
Intermediate 2 - Lead: 15.4 ppg PNE-1 + 2.5% bwoc CaCl<sub>2</sub> 40% Excess, Tail: 15.9 ppg, PNE-1 + 2.5% bwoc CaCl<sub>2</sub>, zero% Excess, CTS  
Production - Lead: 14.8 ppg POZ/PNE-1 + 0.3% bwoc R3 + 1% bwoc EC1 + 0.75 gal/sk FP13L + 0.3% bwoc MPA170, Tail: 14.8 ppg PNE-1 + 0.35% bwoc R3 + 0.75 gal/sk FP13L + 50% bwoc ASCA1 + 0.5% bwoc MPA170 20% Excess, Lead Yield=1.19, Tail Yield=1.94, CTS

RECEIVED  
Office of Oil and Gas

25) Proposed borehole conditioning procedures:

Conductor - Ensure the hole is clean at TD.  
Fresh Water/Coal - Once casing is at setting depth, circulate a minimum of one hole volume with Fresh Water prior to pumping cement.  
Intermediate 1 - Once casing is at setting depth, Circulate and condition at TD. Circulate a minimum of one hole volume prior to pumping cement.  
Intermediate 2 - Once casing is at setting depth, Circulate and condition mud at TD. Circulate a minimum of one hole volume prior to pumping cement.  
Production - Once on bottom/TD with casing, circulate at max allowable pump rate for at least 2x bottoms up, or until returns and pump pressures indicate the hole is clean. Circulate a minimum of one hole volume prior to pumping cement.

JUN 07 2021  
WV Department of  
Environmental Protection

\*Note: Attach additional sheets as needed.





4704105717

RECEIVED  
Office of Oil and Gas  
JUN 07 2021  
WV Department of  
Environmental Protection

1212 S-8H  
Marcellus Shale Horizontal  
Lewis County, WV

Ground Elevation		1332.2'	1212 S-8H SHL				14206101.35N 1785749.47E			
Azm		161.415°	1212 S-8H LP				14206272.69N 1787686.94E			
WELLBORE DIAGRAM			1212 S-8H BHL				14191388.68N 1792691.69E			

HOLE	CASING	GEOLOGY	TOP	BASE	MUD	CEMENT	CENTRALIZERS	CONDITIONING	COMMENTS
30"	30" 157.5# LS	Conductor	0	120	AIR	N/A, Casing to be drilled in w/ Dual Rotary Rig	N/A	Ensure the hole is clean at TD.	Conductor casing = 0.5" wall thickness
		Fresh Water	0	273	AIR	15.6 ppg PNE-1 + 3% bwoc CaCl 40% Excess Yield=1.20 / CTS	Centralized every 3 joints to surface	Once casing is at setting depth, circulate a minimum of one hole volume with Fresh Water prior to pumping cement.	Surface casing = 0.438" wall thickness Burst=2110 psi
Kittaning Coal	987	992							
26"	20" 94# J-55	Fresh Water	0	1000	AIR / KCL Salt Polymer	Lead: 15.4 ppg PNE-1 + 2.5% bwoc CaCl 40% Excess / Tail: 15.9 ppg PNE-1 + 2.5% bwoc CaCl zero% Excess. CTS	Bow Spring on every joint <i>*will also be running ACP for isolating storage zone*</i>	Once casing is at setting depth, Circulate and condition at TD. Circulate a minimum of one hole volume prior to pumping cement.	Intermediate casing = 0.480" wall thickness Burst=3450 psi
		Kittaning Coal	987	992					
17.5"	13-3/8" 68# J-55 BTC	Big Lime	1548	1613	AIR / KCL Salt Polymer	Lead: 15.4 ppg PNE-1 + 2.5% bwoc CaCl 40% Excess / Tail: 15.9 ppg PNE-1 + 2.5% bwoc CaCl zero% Excess. CTS	Bow Spring on first 2 joints then every third joint to 100' form surface	Once casing is at setting depth, Circulate and condition mud at TD. Circulate a minimum of one hole volume prior to pumping cement.	Intermediate casing = 0.395" wall thickness Burst=3950 psi
		Injun / Ganiz (Storage)	1613 / 1898	1718 / 1958					
12.25"	9-5/8" 40# J-55 BTC	Fifty / Thirty Foot	2008 / 2105	2033 / 2128	AIR / KCL Salt Polymer	Lead: 15.4 ppg PNE-1 + 2.5% bwoc CaCl 40% Excess / Tail: 15.9 ppg PNE-1 + 2.5% bwoc CaCl zero% Excess. CTS	Bow Spring on every joint to 100' form surface	Once casing is at setting depth, Circulate and condition mud at TD. Circulate a minimum of one hole volume prior to pumping cement.	Intermediate casing = 0.395" wall thickness Burst=3950 psi
		Gordon Stray / Gordon	2128 / 2198	2198 / 2288					
8.75" Vertical	5-1/2" 23# P-110 HP CDC HTQ	5th Sand	2374	2416	AIR / 9.0ppg SOBMM	Lead: 14.5 ppg POZ:PNE-1 + 0.3% bwoc R3 + 1% bwoc EC1 + 0.75 gal/sk FP13L + 0.3% bwoc MPA170	Run 1 spiral centralizer every 5 joints from the top of the curve to surface.	Once on bottom/TD with casing, circulate at max allowable pump rate for at least 2x bottoms up, or until returns and pump pressures indicate the hole is clean. Circulate a minimum of one hole volume prior to pumping cement.	Production casing = 0.415" wall thickness Burst=16240 psi Note:Actual centralizer schedules may be changed due to hole conditions
		Bayard Sand	2450	2480					
8.5" Curve	5-1/2" 23# P-110 HP CDC HTQ	Intermediate 1	0	2100	11.5ppg-12.5ppg SOBMM	Tail: 14.8 ppg PNE-1 + 0.35% bwoc R3 + 0.75 gal/sk FP13L + 50% bwoc ASCA1 + 0.5% bwoc MPA170 20% Excess Lead Yield=1.19 Tail Yield=1.94 CTS	Run 1 spiral centralizer every 3 joints from the top of the curve.	Once on bottom/TD with casing, circulate at max allowable pump rate for at least 2x bottoms up, or until returns and pump pressures indicate the hole is clean. Circulate a minimum of one hole volume prior to pumping cement.	Production casing = 0.415" wall thickness Burst=16240 psi Note:Actual centralizer schedules may be changed due to hole conditions
		Intermediate 2	0	2900					
8.5" Lateral	5-1/2" 23# P-110 HP CDC HTQ	Speechley	3078	3089	11.5ppg-12.5ppg SOBMM	Tail: 14.8 ppg PNE-1 + 0.35% bwoc R3 + 0.75 gal/sk FP13L + 50% bwoc ASCA1 + 0.5% bwoc MPA170 20% Excess Lead Yield=1.19 Tail Yield=1.94 CTS	Run 1 spiral centralizer every 3 joints from the top of the curve.	Once on bottom/TD with casing, circulate at max allowable pump rate for at least 2x bottoms up, or until returns and pump pressures indicate the hole is clean. Circulate a minimum of one hole volume prior to pumping cement.	Production casing = 0.415" wall thickness Burst=16240 psi Note:Actual centralizer schedules may be changed due to hole conditions
		Balltown	3278	3350					
8.5" Lateral	5-1/2" 23# P-110 HP CDC HTQ	Benson	4370	4382	11.5ppg-12.5ppg SOBMM	Tail: 14.8 ppg PNE-1 + 0.35% bwoc R3 + 0.75 gal/sk FP13L + 50% bwoc ASCA1 + 0.5% bwoc MPA170 20% Excess Lead Yield=1.19 Tail Yield=1.94 CTS	Run 1 spiral centralizer every 3 joints from the top of the curve.	Once on bottom/TD with casing, circulate at max allowable pump rate for at least 2x bottoms up, or until returns and pump pressures indicate the hole is clean. Circulate a minimum of one hole volume prior to pumping cement.	Production casing = 0.415" wall thickness Burst=16240 psi Note:Actual centralizer schedules may be changed due to hole conditions
		Rhinestreet	6256	6445					
8.5" Lateral	5-1/2" 23# P-110 HP CDC HTQ	Cashaqua	6445	6526	11.5ppg-12.5ppg SOBMM	Tail: 14.8 ppg PNE-1 + 0.35% bwoc R3 + 0.75 gal/sk FP13L + 50% bwoc ASCA1 + 0.5% bwoc MPA170 20% Excess Lead Yield=1.19 Tail Yield=1.94 CTS	Run 1 spiral centralizer every 3 joints from the top of the curve.	Once on bottom/TD with casing, circulate at max allowable pump rate for at least 2x bottoms up, or until returns and pump pressures indicate the hole is clean. Circulate a minimum of one hole volume prior to pumping cement.	Production casing = 0.415" wall thickness Burst=16240 psi Note:Actual centralizer schedules may be changed due to hole conditions
		Middlesex	6526	6625					
8.5" Lateral	5-1/2" 23# P-110 HP CDC HTQ	West River	6625	6660	11.5ppg-12.5ppg SOBMM	Tail: 14.8 ppg PNE-1 + 0.35% bwoc R3 + 0.75 gal/sk FP13L + 50% bwoc ASCA1 + 0.5% bwoc MPA170 20% Excess Lead Yield=1.19 Tail Yield=1.94 CTS	Run 1 spiral centralizer every 3 joints from the top of the curve.	Once on bottom/TD with casing, circulate at max allowable pump rate for at least 2x bottoms up, or until returns and pump pressures indicate the hole is clean. Circulate a minimum of one hole volume prior to pumping cement.	Production casing = 0.415" wall thickness Burst=16240 psi Note:Actual centralizer schedules may be changed due to hole conditions
		Burkett	6660	6751					
8.5" Lateral	5-1/2" 23# P-110 HP CDC HTQ	Tully Limestone	6751	6815	11.5ppg-12.5ppg SOBMM	Tail: 14.8 ppg PNE-1 + 0.35% bwoc R3 + 0.75 gal/sk FP13L + 50% bwoc ASCA1 + 0.5% bwoc MPA170 20% Excess Lead Yield=1.19 Tail Yield=1.94 CTS	Run 1 spiral centralizer every 3 joints from the top of the curve.	Once on bottom/TD with casing, circulate at max allowable pump rate for at least 2x bottoms up, or until returns and pump pressures indicate the hole is clean. Circulate a minimum of one hole volume prior to pumping cement.	Production casing = 0.415" wall thickness Burst=16240 psi Note:Actual centralizer schedules may be changed due to hole conditions
		Hamilton	6815	6753					
8.5" Lateral	5-1/2" 23# P-110 HP CDC HTQ	Marcellus	6845	6927	11.5ppg-12.5ppg SOBMM	Tail: 14.8 ppg PNE-1 + 0.35% bwoc R3 + 0.75 gal/sk FP13L + 50% bwoc ASCA1 + 0.5% bwoc MPA170 20% Excess Lead Yield=1.19 Tail Yield=1.94 CTS	Run 1 spiral centralizer every 3 joints from the top of the curve.	Once on bottom/TD with casing, circulate at max allowable pump rate for at least 2x bottoms up, or until returns and pump pressures indicate the hole is clean. Circulate a minimum of one hole volume prior to pumping cement.	Production casing = 0.415" wall thickness Burst=16240 psi Note:Actual centralizer schedules may be changed due to hole conditions
		TMD / TVD (Production)	23486	6913					
8.5" Lateral	5-1/2" 23# P-110 HP CDC HTQ	Onondaga	6927		11.5ppg-12.5ppg SOBMM	Tail: 14.8 ppg PNE-1 + 0.35% bwoc R3 + 0.75 gal/sk FP13L + 50% bwoc ASCA1 + 0.5% bwoc MPA170 20% Excess Lead Yield=1.19 Tail Yield=1.94 CTS	Run 1 spiral centralizer every 3 joints from the top of the curve.	Once on bottom/TD with casing, circulate at max allowable pump rate for at least 2x bottoms up, or until returns and pump pressures indicate the hole is clean. Circulate a minimum of one hole volume prior to pumping cement.	Production casing = 0.415" wall thickness Burst=16240 psi Note:Actual centralizer schedules may be changed due to hole conditions

LP @ 6913' TVD / 7777' MD

8.5" Hole - Cemented Long String  
5-1/2" 23# P-110 HP CDC HTQ

+/-15709' ft Lateral

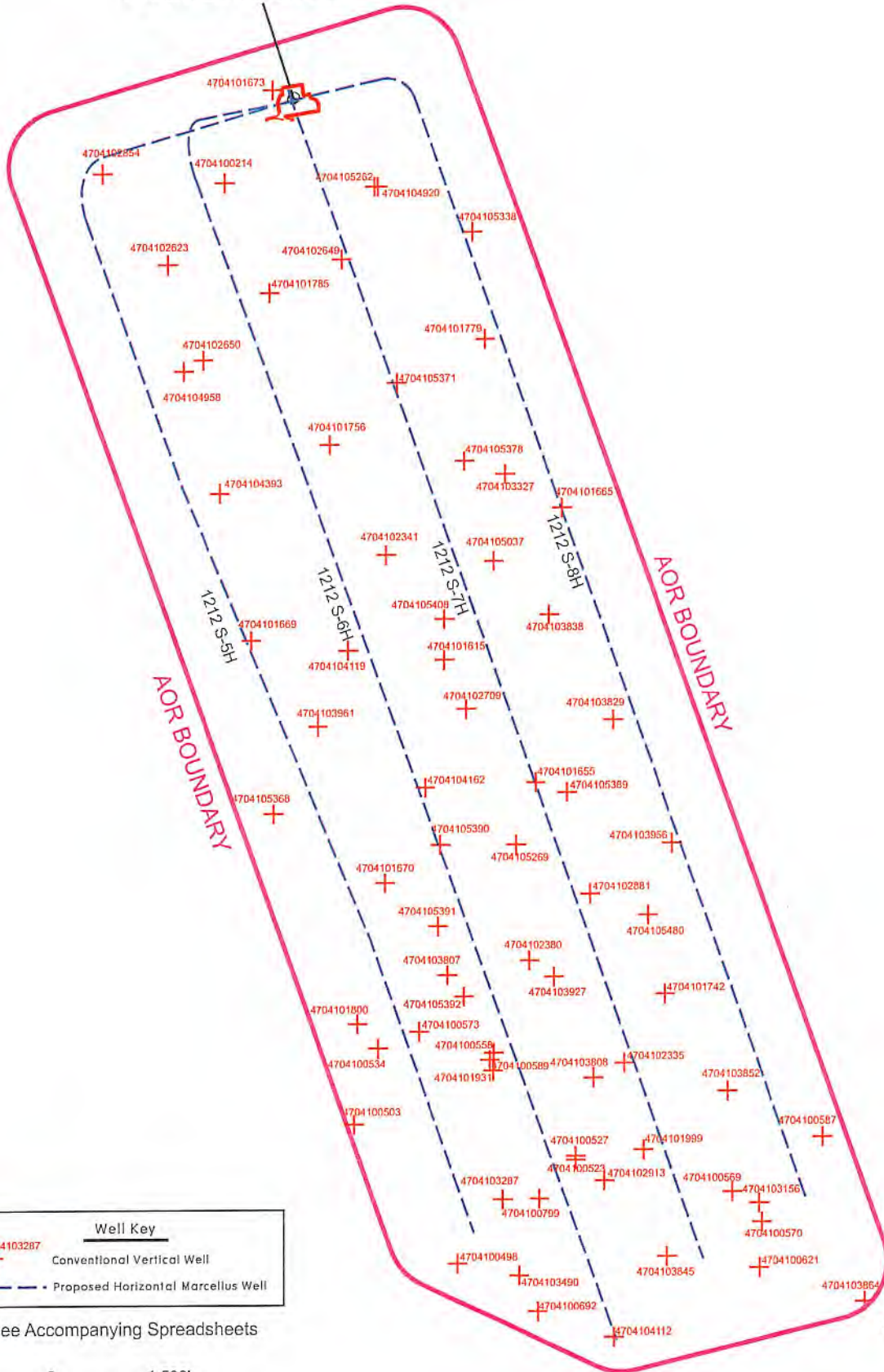
TD @ +/-6913' TVD  
+/-23486' MD

X=centralizers



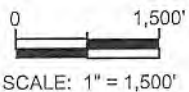


FLESHER 1212 PAD



Well Key	
+	Conventional Vertical Well
- - - -	Proposed Horizontal Marcellus Well

See Accompanying Spreadsheets



DATA SOURCES  
WVGES Data Set - 2017; WVDEP Website

RECEIVED  
Office of Oil and Gas

JUN 07 2021

WV Department of  
Environmental Protection

Area of Review for:

**FLESHER 1212 SOUTH UNIT**

Proposed 1212 S-5H    Proposed 1212 S-6H  
Proposed 1212 S-7H    Proposed 1212 S-8H

HG ENERGY, II APPALACHIA, LLC  
5260 DuPont Road, Parkersburg, WV 26101

07/02/2021



Freeman's Creek District, Lewis County, W.Va.

12/10/2020



**EXISTING WELLS LOCATED WITHIN THE AREA OF REVIEW FOR:  
FLESHER 1212 SOUTH UNIT AND PROPOSED WELLS S-5H, S-6H, S-7H & S-8H**

RECEIVED  
Office of Oil and Gas  
JUN 07 2021  
WV Department of Environmental Protection

CT	API	COUNTY	FARM	OPERATOR NAME	FORMATION NAME	WELL TYPE	TVD	STATUS	LATITUDE	LONGITUDE
1	4704100214	Lewis	Geo Norris	Dominion Energy Transmission, Inc.	Hampshire Grp	Storage	2275	ACTIVE	39.115382	-80.490758
2	4704100498	Lewis	L Bailey 1	Deran Resources, Inc.	Up Devonian	Gas	2211	ACTIVE	39.077335	-80.480659
3	4704100503	Lewis	J J Bailey 2	Geo Energy, LLC	Price Fm & equivs	Gas w/ Oil Show	1385	ACTIVE	39.082266	-80.485313
4	4704100523	Lewis	Hope McDonald et al 1	Hays & Company	Price Fm & equivs	Gas w/ Oil Show	1750	PLUGGED	39.080961	-80.475265
5	4704100527	Lewis	B B Butcher 1	Lippizan Petroleum, Inc.	Price Fm & equivs	Gas w/ Oil Show	1410	ACTIVE	39.081106	-80.475265
6	4704100534	Lewis	Georg Dean 2	Geo Energy, LLC	Price Fm & equivs	Gas	1381	ACTIVE	39.084922	-80.484197
7	4704100558	Lewis	Doyle Butcher et al 2	Lippizan Petroleum, Inc.	Price Fm & equivs	Gas	1364	ACTIVE	39.084632	-80.479545
8	4704100569	Lewis	W W Chapman 1	Clem Energy, LLC	Unkown	Gas	-	ABANDONED	39.079798	-80.468192
9	4704100570	Lewis	W W Chapman 1	Law, David W.	Price Fm & equivs	Gas	1363	ABANDONED	39.079511	-80.466333
10	4704100573	Lewis	Clete Butcher et al 1	Bower, Hall and Wetzel	Price Fm & equivs	Gas	1441	PLUGGED	39.085502	-80.482337
11	4704100587	Lewis	Clay Maxwell Jr 1	Cohen, Henry	Big Injun (Grnbr)	Gas w/ Oil Show	1368	PLUGGED	39.081686	-80.464101
12	4704100589	Lewis	Doyle Vutcher 3	Law, David W.	Conemaugh Group	Dry w/ Gas Show	435	PLUGGED	39.084342	-80.479173
13	4704100621	Lewis	W W Riggs 1	Tower Service Company	Price Fm & equivs	Gas	1410	PLUGGED	39.077105	-80.466986
14	4704100799	Lewis	Carl Harrison 1	Bagwell & Trader	Price Fm & equivs	Gas	1360	ABANDONED	39.079613	-80.476936
15	4704101615	Lewis	Sophia Butcher	Dominion Energy Transmission, Inc.	Benson	Gas	4210	ACTIVE	39.098539	-80.481047
16	4704101655	Lewis	Sophia Butcher	Alliance Petroleum, Co., LLC	Greenland Gap Fm	Gas	4120	ACTIVE	39.094203	-80.476943
17	4704101665	Lewis	Charles F Bailey	Dominion Energy Transmission, Inc.	Greenland Gap Fm	Gas	4250	ACTIVE	39.103826	-80.475644
18	4704101669	Lewis	Charles I Bailey	Dominion Energy Transmission, Inc.	Greenland Gap Fm	Gas	4110	ACTIVE	39.099278	-80.489786
19	4704101670	Lewis	J W Norris	Alliance Petroleum, Co., LLC	Benson	Gas	4425	ACTIVE	39.090722	-80.483827
20	4704101673	Lewis	Cecil I Dempsey	Dominion Energy Transmission, Inc.	Greenland Gap Fm	Gas	4509	ACTIVE	39.118627	-80.488538
21	4704101742	Lewis	WV University Board of Gov	Alliance Petroleum, Co., LLC	Benson	Gas	4205	ACTIVE	39.086743	-80.471172
22	4704101756	Lewis	W E Carpenter	Dominion Energy Transmission, Inc.	Benson	Gas	4220	ACTIVE	39.106120	-80.486154
23	4704101779	Lewis	C F Bailey	Dominion Energy Transmission, Inc.	Benson	Gas	4446	ACTIVE	39.109755	-80.479062
24	4704101785	Lewis	C L Hitt	Dominion Energy Transmission, Inc.	Benson	Gas	4440	ACTIVE	39.111471	-80.488801
25	4704101800	Lewis	George W Dean Jr	Greylock Conventional, LLC	Benson	Gas	4305	ACTIVE	39.085792	-80.485128
26	4704101931	Lewis	Doyle Butcher 3	Lippizan Petroleum, Inc.	Benson	Gas	4163	ACTIVE	39.084052	-80.479917
27	4704101999	Lewis	Granville Butcher	Mountain, LLC	Fifth	Gas	4436	ACTIVE	39.081302	-80.472195
28	4704102335	Lewis	G Butcher	Alliance Petroleum, Co., LLC	Hampshire Grp	Gas	2575	ACTIVE	39.084342	-80.473033
29	4704102341	Lewis	Edna Brown	Dominion Energy Transmission, Inc.	Greenland Gap Fm	Gas	4280	ACTIVE	39.102228	-80.483644
30	4704102380	Lewis	Burt Keister	Alliance Petroleum, Co., LLC	Hampshire Grp	Gas	2000	ACTIVE	39.087967	-80.477313
31	4704102623	Lewis	Geo Norris	Dominion Energy Transmission, Inc.	Unkown	Storage	-	ACTIVE	39.112510	-80.493384
32	4704102649	Lewis	George Norris	Dominion Energy Transmission, Inc.	Unkown	Storage	-	ACTIVE	39.112620	-80.485511
33	4704102650	Lewis	Ira L. Queen	Dominion Energy Transmission, Inc.	Unkown	Storage	-	ACTIVE	39.109140	-80.491838
34	4704102709	Lewis	Sophia Butcher	Consolidated Gas Supply Corp.	Unkown	not available	-	ABANDONED	39.096803	-80.480078



RECEIVED  
Office of Oil and Gas  
JUN 07 2021  
WV Department of  
Environmental Protection

35	4704102854	Lewis	J S Norris	Dominion Energy Transmission, Inc.	not available	Storage	-	ACTIVE	39.115783	-80.496273
36	4704102881	Lewis	WVU Board of Governors	Alliance Petroleum, Co., LLC	Greenland Gap Fm	Gas	4250	ACTIVE	39.090287	-80.474523
37	4704102913	Lewis	John J Oldaker III	Jackson Fuel Corporation	Benson	Gas	4384	ACTIVE	39.080236	-80.473962
38	4704103156	Lewis	John F Wyant 1	Clem Energy, LLC	Elk	Gas	5757	ACTIVE	39.078351	-80.466333
39	4704103287	Lewis	Michael F Tierney Jr et al	Alliance Petroleum, Co., LLC	Brallier	Gas	5891	ACTIVE	39.079584	-80.478590
40	4704103327	Lewis	Rizpah B Carpenter	Dominion Energy Transmission, Inc.	Hampshire Grp	Gas	2380	PLUGGED	39.105009	-80.478216
41	4704103490	Lewis	Martha Queen 1-A	Prince Petroleum, Inc.	Benson	Gas	4287	ABANDONED	39.076900	-80.477868
42	4704103807	Lewis	Martha Carpenter	Alliance Petroleum, Co., LLC	Brallier	Gas	6050	ACTIVE	39.087478	-80.481020
43	4704103808	Lewis	Amy B Dent	Alliance Petroleum, Co., LLC	Brallier	Gas	5980	ACTIVE	39.084487	-80.474149
44	4704103829	Lewis	David Hamrick	Alliance Petroleum, Co., LLC	Brallier	Gas	5791	ACTIVE	39.096668	-80.473222
45	4704103838	Lewis	Charles F. Bailey	Dominion Energy Transmission, Inc.	Benson	Gas	4314	ACTIVE	39.100088	-80.476278
46	4704103845	Lewis	Alva Butcher	Alliance Petroleum, Co., LLC	Benson	Gas	4984	ACTIVE	39.077626	-80.470798
47	4704103852	Lewis	Patricia Hall	Alliance Petroleum, Co., LLC	Benson	Gas	4264	ACTIVE	39.083327	-80.468381
48	4704103864	Lewis	Vivian Thompson 1	Alliance Petroleum, Co., LLC	Benson	Gas	4225	ACTIVE	39.075885	-80.462240
49	4704103927	Lewis	Word of Life Christians	Diversified Resources, Inc.	Benson	Gas	4170	ACTIVE	39.087387	-80.476197
50	4704103956	Lewis	WV Board of Control	Devonian Gas Production, Inc.	Greenland Gap Fm	Gas w/ Oil Show	4230	ACTIVE	39.092028	-80.470801
51	4704103961	Lewis	John Norris	Enervest Operating, LLC	Benson	Gas	4280	ACTIVE	39.096233	-80.486807
52	4704104119	Lewis	Patricia Jo Beeson 1	Alliance Petroleum, Co., LLC	Greenland Gap Fm	Gas	4190	ACTIVE	39.098896	-80.485399
53	4704104162	Lewis	Michael L/Judy K Huntz	Berry Energy, Inc.	Greenland Gap Fm	Gas	4210	ACTIVE	39.094058	-80.481968
54	4704104393	Lewis	Richard D Carpenter	Dominion Energy Transmission, Inc.	Greenland Gap Fm	Gas	4312	ACTIVE	39.104455	-80.491136
55	4704104920	Lewis	Charles Bailey	Dominion Energy Transmission, Inc.	Misc Sands-BNSN/BRLR	Gas	4579	ACTIVE	39.115176	-80.483845
56	4704104958	Lewis	Richard W Dunham	Dominion Energy Transmission, Inc.	Misc Sands-BNSN/BRLR	Gas	4449	ACTIVE	39.108761	-80.492720
57	4704105037	Lewis	Kenneth L Hunt	Dominion Energy Transmission, Inc.	Greenland Gap Fm	Gas	3561	ACTIVE	39.101975	-80.478771
58	4704105262	Lewis	Charles Bailey	Dominion Energy Transmission, Inc.	Weir	Gas	1776	ACTIVE	39.115179	-80.483972
59	4704105269	Lewis	Edwin Lee Bowyer II	Alliance Petroleum, Co., LLC	Greenland Gap Fm	Gas	4160	ACTIVE	39.092028	-80.477873
60	4704105338	Lewis	Fred A Bailey	Dominion Energy Transmission, Inc.	Price Fm & equivs	Gas	1683	ACTIVE	39.113523	-80.479570
61	4704105368	Lewis	Edward Earl Garrett	Alliance Petroleum, Co., LLC	Greenland Gap Fm	Gas	4470	ACTIVE	39.093188	-80.488853
62	4704105371	Lewis	Scott A Carpenter	Dominion Energy Transmission, Inc.	Price Fm & equivs	Gas	1530	ACTIVE	39.108271	-80.483089
63	4704105378	Lewis	Charles F Bailey	Dominion Energy Transmission, Inc.	Price Fm & equivs	Gas	1777	ACTIVE	39.105497	-80.480063
64	4704105389	Lewis	Lee Matthew McWhorter	Alliance Petroleum, Co., LLC	Greenland Gap Fm	Gas	2244	ACTIVE	39.093854	-80.475522
65	4704105390	Lewis	Mary Lou Curry	Alliance Petroleum, Co., LLC	Greenland Gap Fm	Gas	2480	ACTIVE	39.092043	-80.481298
66	4704105391	Lewis	Mary Lou Curry	Alliance Petroleum, Co., LLC	Greenland Gap Fm	Gas	2531	ACTIVE	39.089187	-80.481436
67	4704105392	Lewis	Mary Lou Curry	Alliance Petroleum, Co., LLC	Greenland Gap Fm	Gas	2531	ACTIVE	39.086712	-80.480292
68	4704105408	Lewis	Deborah D Hunt	Dominion Energy Transmission, Inc.	Greenland Gap Fm	Gas	3386	ACTIVE	39.100004	-80.481411
69	4704105480	Lewis	WV University Board of Gov	Devonian Gas Production	Benson	Gas	4248	ACTIVE	39.089518	-80.471914

SOURCE: WVGES DATASET (2017) and WVDEP WEBSITE AND FIELD SURVEYS

YELLOW DENOTES WELL WITH TVD > 4,500'

GREEN DENOTES SURVEYED WELLS



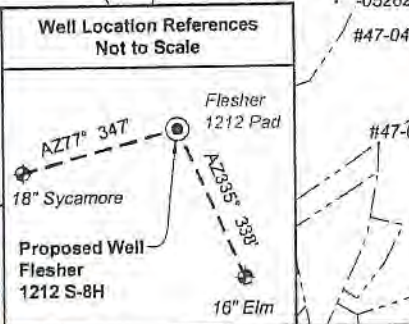
HG Energy II Appalachia, LLC  
Well No. Flesher 1212 S-8H MOD

Page 1 of 2



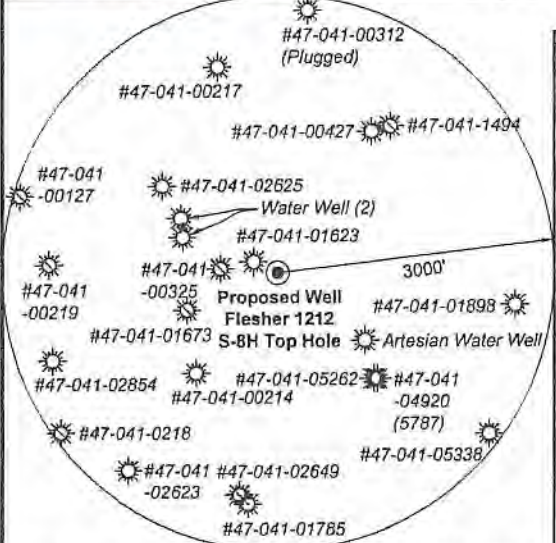
I, the undersigned, hereby certify that this plat is correct to the best of my knowledge and belief and shows all the information required by law and the rules issued and prescribed by the Department of Environmental Protection.

*Kevin S. James*  
Kevin S. James, P.S. 2305



- Legend**
- Proposed gas well
  - Well Reference, as noted
  - Monument, as noted
  - Existing Well, as noted
  - Digitized Well, as noted
  - Creek or Drain
  - Existing Road
  - Surface boundary (approx.)
  - Interior surface tracts (approx.)

Tag	Bearing	Dist.	Description
L1	N 42°25' W	1,526.1'	#47-041-05262
L2	N 24°09' E	677.0'	1/2" Rebar
L3	N 68°12' E	1,618.8'	1" Iron pipe
L4	S 53°37' E	1,573.0'	#47-041-02625
L5	N 84°57' E	1,945.0'	Landing point



**Notes:**  
Well No. Flesher 1212 S-8H  
UTM NAD 1983 (USSF)  
Top Hole Coordinates  
N: 14,206,101.35'  
E: 1,785,749.47'  
Landing Point Coordinates  
N: 14,206,272.69'  
E: 1,787,686.94'  
Bottom Hole Coordinates  
N: 14,191,388.68'  
E: 1,792,691.69'

**Notes:** Well No. Flesher 1212 S-8H  
West Virginia Coordinate System of 1927, North Zone  
based upon Differential GPS Measurements.  
Top Hole coordinates      Bottom Hole coordinates  
Latitude: 39°07'05.51"      Latitude: 39°04'39.64"  
Longitude: 80°29'15.95"      Longitude: 80°27'48.95"  
UTM Zone 17, NAD 1983  
Top Hole Coordinates      Bottom Hole Coordinates  
N: 4,330,028.356m      N: 4,325,543.925m  
E: 544,297.528m      E: 545,413.519m  
Plat orientation and corner and well references are based upon the grid north meridian. Well location references are based upon the magnetic meridian.

8,349' to Top Hole  
1,494' to Bottom Hole  
TOP HOLE LATITUDE 39 - 07 - 30  
BTM HOLE LATITUDE 39 - 05 - 00  
Bottom Hole 7.5' Spot  
LONGITUDE 80 - 27 - 30  
2,477' to Top Hole  
2,060' to Bottom Hole

FILE NO: 156-36-12-U-F-19  
DRAWING NO: Flesher 1212 S-8H Well Plat  
SCALE: 1" = 2000'  
MINIMUM DEGREE OF ACCURACY: Submeter  
PROVEN SOURCE OF ELEVATION: CORS, Bridgeport, WV

**STATE OF WEST VIRGINIA**  
DEPARTMENT OF ENVIRONMENTAL PROTECTION  
**OIL AND GAS DIVISION**

DATE: June 3, 2021  
OPERATOR'S WELL NO. Flesher 1212 S-8H  
API WELL NO MOD  
47 - 041 - 05717  
STATE COUNTY PERMIT

WELL TYPE:  OIL  GAS  LIQUID INJECTION  WASTE DISPOSAL  
(IF GAS) PRODUCTION:  STORAGE  DEEP  SHALLOW  
LOCATION: ELEVATION: 1,332.2' WATERSHED: Middle West Fork Creek QUADRANGLE: Weston  
DISTRICT: Freemans Creek COUNTY: Lewis  
SURFACE OWNER: H.G. Energy II Appalachia, LLC ACREAGE: 70.00  
ROYALTY OWNER: W.D. Hitt, et al, et al LEASE NO: ACREAGE: 210.00  
PROPOSED WORK:  DRILL  CONVERT  DRILL DEEPER  FRACTURE OR STIMULATE  PLUG OFF OLD FORMATION  
 PERFORATE NEW FORMATION  OTHER PHYSICAL CHANGE IN WELL (SPECIFY) LP & BH MOD  
 PLUG AND ABANDON  CLEAN OUT AND REPLUG TARGET FORMATION: Marcellus Shale ESTIMATED DEPTH: 23,486' MD

WELL OPERATOR: HG Energy II Appalachia, LLC DESIGNATED AGENT: Diane C. White  
ADDRESS: 5260 Dupont Road ADDRESS: 5260 Dupont Road  
Parkersburg, WV 26101 Parkersburg, WV 26101

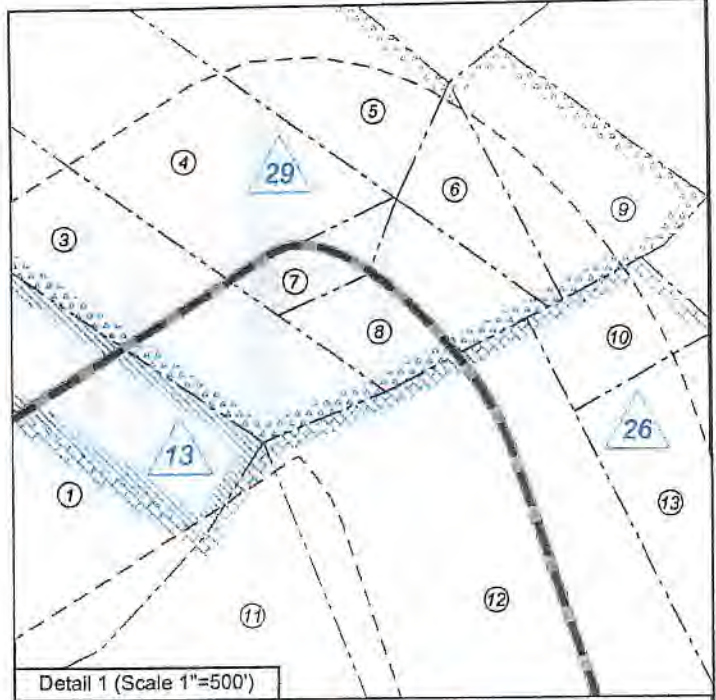
JUN 07 2021  
WV Department of Environmental Protection



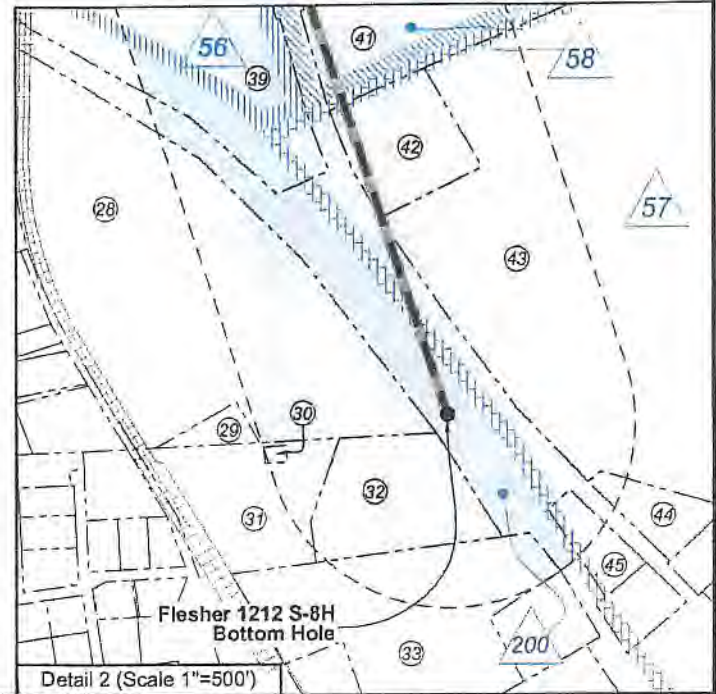


ID	Lease
13	Alda V. Hitt
15	Charles F. Bailey, et al
23	WVU Board of Governors
25	W.A. Chittum, et al
26	W.D. Hitt, et al
28	Charles F. Bailey, et al
29	Susan R. Hall, et al
56	James H. Hall Trust
57	A. W. Woodford, et al
58	Tawana Butcher, et al
63	Prudence M. O'hara, et al
67	The A. Edward O'Hara and Jean O'Hara Inter Vivos Trust, et al.
200	WV DNR

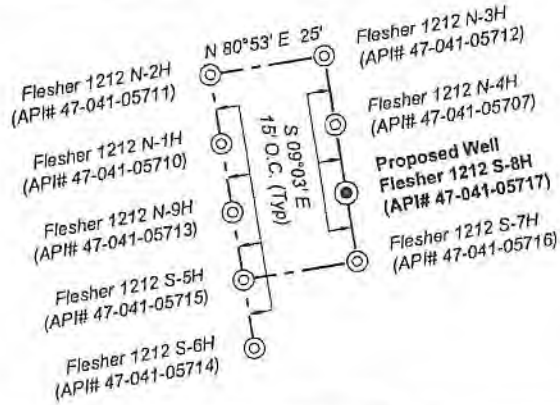
No.	TM / Par	Owner	Bk / Pg	Ac.
Lewis Co. - Freeman Creek Dist.				
1	6C / 47	HG Energy II Appalachia, LLC	753 / 453	70.00
2	6C / 43	Gary Allan Sias	646 / 688	50.59
3	6C / 48	Marlene Hovis	672 / 411	15.00
4	6C / 49	Marlene Hovis	672 / 411	12.90
5	6C / 51	Marlene Hovis	672 / 411	14.90
6	6C / 51.1	Kenneth B. & Lydia M. Burroughs	504 / 216	2.35
7	6C / 52.1	Marlene Hovis	672 / 411	1.37
8	6C / 52	Kenneth B. & Lydia M. Burroughs	420 / 196	3.70
9	6C / 55	Kenneth B. & Lydia M. Burroughs	336 / 47	5.10
10	6C / 54	Kenneth B. & Lydia M. Burroughs	336 / 47	2.00
11	6C / 45	Fred A. Bailey	W25 / 263	48.00
12	6C / 46	Fred A. Bailey	W25 / 263	47.00
13	6C / 53	Kenneth B. & Lydia M. Burroughs	336 / 47	11.00
14	7C / 7	Bette Gerath	W20 / 230	34.00
15	7C / 9	Bette Gerath	397 / 214	31.00
16	7C / 10	Bette Gerath	397 / 214	4.20
17	7C / 16	Charles D. & Fred A. Bailey	763 / 630	130.50
18	7C / 12	Aubrey E. Jr. & Donna M. Smith	740 / 926	36.35
19	7C / 15	Dixie & Wilma Wine	536 / 490	1.15
20	7D / 3	Fred & Ginger Bailey	653 / 717	21.18
21	7D / 32	WVU Board of Governors	584 / 524	221.65
22	7D / 2.1	Fred & Ginger Bailey	616 / 179	3.77
23	7D / 32.3	Jackson Mill Cemetery	112 / 45	0.54
24	2 / 55	Jacksons Mill Baptist Church Trustees	128 / 211	0.72
25	2 / 56	Betty S. Enoch	FID29 / 547	0.72
26	2 / 65	Betty S. Enoch	FID29 / 547	1.26
27	2 / 66	Betty S. Enoch	FID29 / 547	2.90
28	7E / 32	Euda M. and Thomas E. Daniels Jr.	528 / 278	13.68
29	7E / 32.1	Douglas R. Blake	678 / 644	0.40
30	7E / 35.1	Weston Sanitary Board	730 / 617	0.06
31	7E / 35	John K. & Susan Butcher	730 / 558	3.17
32	7E / 36	Cumberland & Allegheny Gas Co.	119 / 51	5.77
33	4 / 37	John K. & Susan D. Butcher	590 / 301	6.20



No.	TM / Par	Owner	Bk / Pg	Ac.
Lewis Co. - Hackers Creek Dist.				
34	7D / 5	WVU Board of Governors	584 / 524	323.00
35	7D / 9.3	Swisher LLC	739 / 833	473.38
36	7D / 6.1	Waco O&G & Mike Ross Inc.	638 / 735	0.88
37	7D / 9.2	Waco Oil & Gas and Mike Ross Inc.	714 / 321	2.28
38	7D / 8	Waco Oil & Gas and Mike Ross Inc.	714 / 321	4.45
39	7D / 7	Mike Ross, Inc.	630 / 238	37.97
40	7D / 7.1	City of Weston Sanitary Board	732 / 51	0.03
41	7D / 8.1	Deerfield Country Club, Inc	359 / 409	98.83
42	7E / 67	Delores B. Adler	W19 / 682	3.00
43	7E / 68	Delores B. Adler	359 / 421	67.11
44	7E / 1	Georgeann Fallon	338 / 362	0.88
45	7E / 2	Linda K. Probst	W44 / 691	0.72



Wellhead Layout (NTS)



FILE NO: 156-36-12-U-F-19  
DRAWING NO: Flesher 1212 S-8H Well Plat  
SCALE: 1" = 2000'  
MINIMUM DEGREE OF ACCURACY: Submeter  
PROVEN SOURCE OF ELEVATION: CORS, Bridgeport, WV

**STATE OF WEST VIRGINIA**  
DEPARTMENT OF ENVIRONMENTAL PROTECTION  
**OIL AND GAS DIVISION**

DATE: June 3 2021  
OPERATOR'S WELL NO. Flesher 1212 S-8H  
API WELL NO. 47-041-05717  
STATE COUNTY PERMIT

WELL TYPE:  OIL  GAS  LIQUID INJECTION  WASTE DISPOSAL  
(IF GAS) PRODUCTION:  STORAGE  DEEP  SHALLOW

LOCATION: ELEVATION: 1,332.2' WATERSHED: Middle West Fork Creek  
DISTRICT: Freemans Creek  
SURFACE OWNER: H.G. Energy II Appalachia, LLC  
ROYALTY OWNER: W.D. Hitt, et al, et al LEASE NO: ACREAGE: 210.00

PROPOSED WORK:  DRILL  CONVERT  DRILL DEEPER  FRACTURE OR STIMULATE  PLUG OFF OLD FORMATION  
 PERFORATE NEW FORMATION  OTHER PHYSICAL CHANGE IN WELL (SPECIFY) LP & BH MOD  
 PLUG AND ABANDON  CLEAN OUT AND REPLUG TARGET FORMATION: Marcellus Shale ESTIMATED DEPTH: 23,486' MD

WELL OPERATOR: HG Energy II Appalachia, LLC DESIGNATED AGENT: Diane C. White  
ADDRESS: 5260 Dupont Road ADDRESS: 5260 Dupont Road  
Parkersburg, WV 26101 Parkersburg, WV 26101

JUN 07 2021  
OFFICE OF OIL AND GAS  
PERMIT

WV Department of Environmental Protection  
QUADRANGLE: Weston  
COUNTY: Lewis  
ACREAGE: 70.00  
07/02/2021

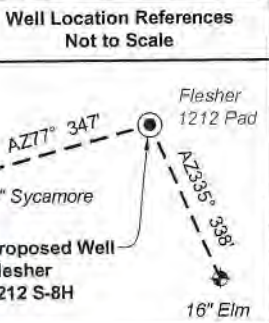




SEAL

I, the undersigned, hereby certify that this plat is correct to the best of my knowledge and belief and shows all the information required by law and the rules issued and prescribed by the Department of Environmental Protection.

*Kevin S. James*  
Kevin S. James, P.S. 2305



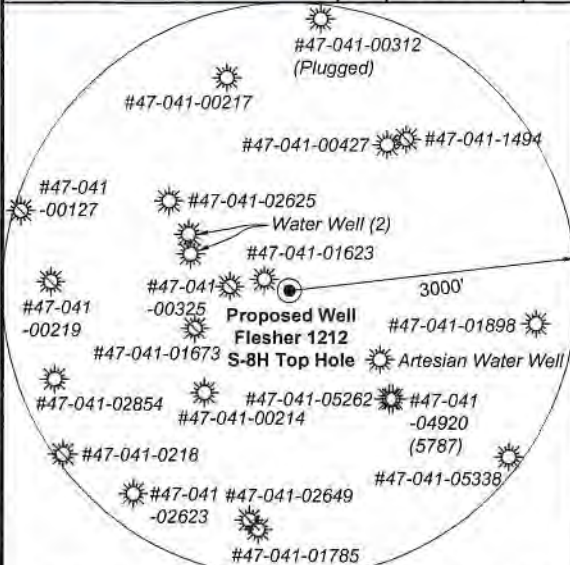
**Legend**

- Proposed gas well
- Well Reference, as noted
- Monument, as noted
- Existing Well, as noted
- Digitized Well, as noted
- Creek or Drain
- Existing Road
- Surface boundary (approx.)
- Interior surface tracts (approx.)

Tag	Bearing	Dist.	Description
L1	N 42°25' W	1,526.1'	#47-041-05262
L2	N 24°09' E	677.0'	1/2" Rebar
L3	N 68°12' E	1,618.8'	1" Iron pipe
L4	S 53°37' E	1,573.0'	#47-041-02625
L5	N 84°57' E	1,945.0'	Landing point

**Notes:**  
Well No. Flesher 1212 S-8H  
UTM NAD 1983 (USSF)  
Top Hole Coordinates  
N: 14,206,101.35'  
E: 1,785,749.47'  
Landing Point Coordinates  
N: 14,206,272.69'  
E: 1,787,686.94'  
Bottom Hole Coordinates  
N: 14,191,388.68'  
E: 1,792,691.69'

**Notes:** Well No. Flesher 1212 S-8H  
West Virginia Coordinate System of 1927, North Zone based upon Differential GPS Measurements.  
Top Hole coordinates      Bottom Hole coordinates  
Latitude: 39°07'05.51"      Latitude: 39°04'39.64"  
Longitude: 80°29'15.95"      Longitude: 80°27'48.95"  
UTM Zone 17, NAD 1983  
Top Hole Coordinates      Bottom Hole Coordinates  
N: 4,330,028.356m      N: 4,325,543.925m  
E: 544,297.528m      E: 546,413.519m  
Plat orientation and corner and well references are based upon the grid north meridian. Well location references are based upon the magnetic meridian.



Note: 2 water wells and 1 artesian well was found within 1500' of proposed well. No occupied dwellings or buildings 2,500 square feet or larger used to house or shelter dairy cattle or poultry husbandry are located within 625' of the center of the well pad.

FILE NO: 156-36-12-U-F-19  
DRAWING NO: Flesher 1212 S-8H Well Plat  
SCALE: 1" = 2000'  
MINIMUM DEGREE OF ACCURACY: Submeter  
PROVEN SOURCE OF ELEVATION: CORS, Bridgeport, WV

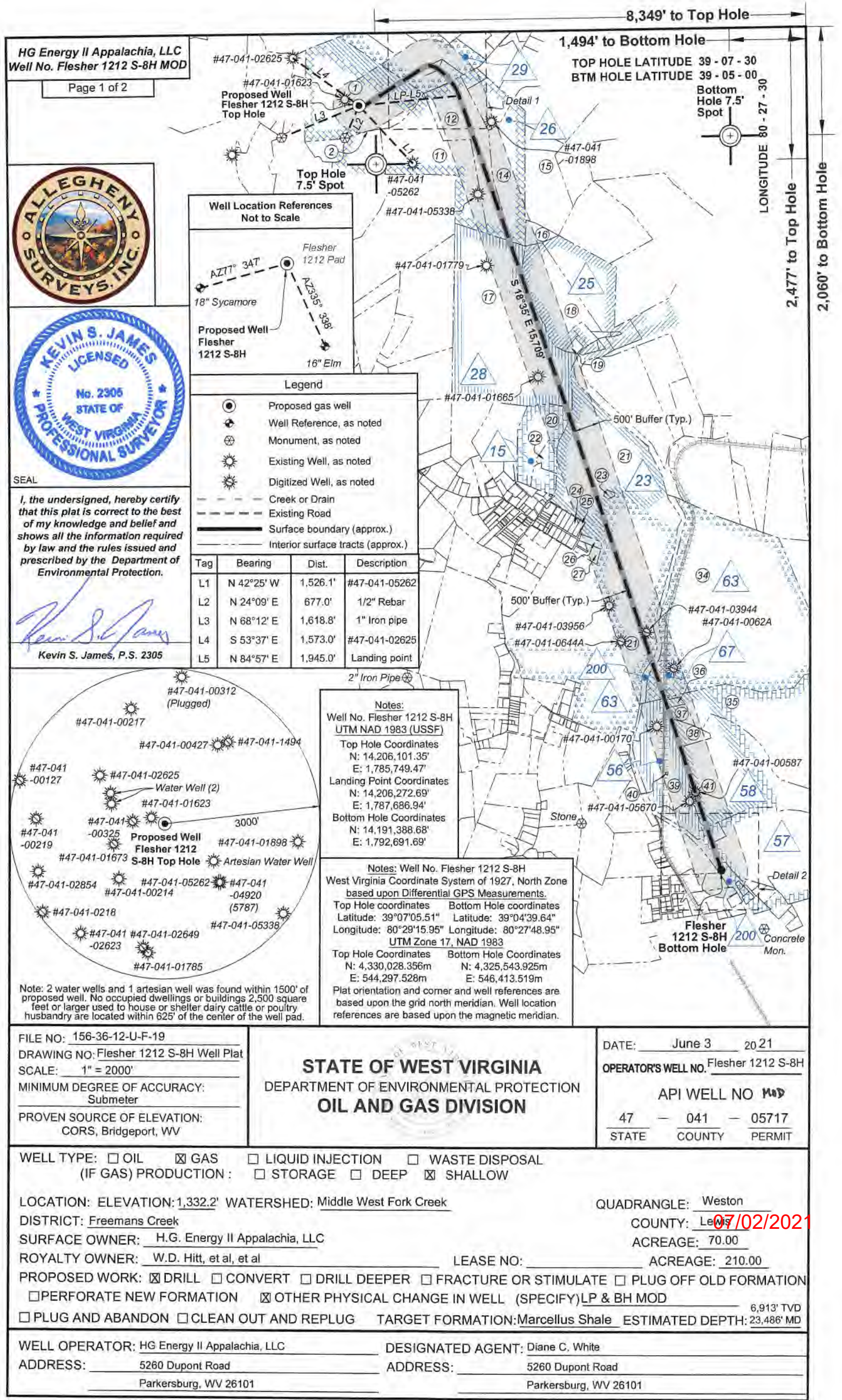
**STATE OF WEST VIRGINIA**  
DEPARTMENT OF ENVIRONMENTAL PROTECTION  
**OIL AND GAS DIVISION**

DATE: June 3 2021  
OPERATOR'S WELL NO. Flesher 1212 S-8H  
API WELL NO. ~~1409~~  
47 - 041 - 05717  
STATE COUNTY PERMIT

WELL TYPE:  OIL  GAS  LIQUID INJECTION  WASTE DISPOSAL  
(IF GAS) PRODUCTION:  STORAGE  DEEP  SHALLOW

LOCATION: ELEVATION: 1,332.2' WATERSHED: Middle West Fork Creek  
DISTRICT: Freemans Creek  
SURFACE OWNER: H.G. Energy II Appalachia, LLC  
ROYALTY OWNER: W.D. Hitt, et al, et al LEASE NO: ACREAGE: 210.00  
PROPOSED WORK:  DRILL  CONVERT  DRILL DEEPER  FRACTURE OR STIMULATE  PLUG OFF OLD FORMATION  
 PERFORATE NEW FORMATION  OTHER PHYSICAL CHANGE IN WELL (SPECIFY) LP & BH MOD  
 PLUG AND ABANDON  CLEAN OUT AND REPLUG TARGET FORMATION: Marcellus Shale ESTIMATED DEPTH: 23,486' MD

WELL OPERATOR: HG Energy II Appalachia, LLC DESIGNATED AGENT: Diane C. White  
ADDRESS: 5260 Dupont Road ADDRESS: 5260 Dupont Road  
Parkersburg, WV 26101 Parkersburg, WV 26101



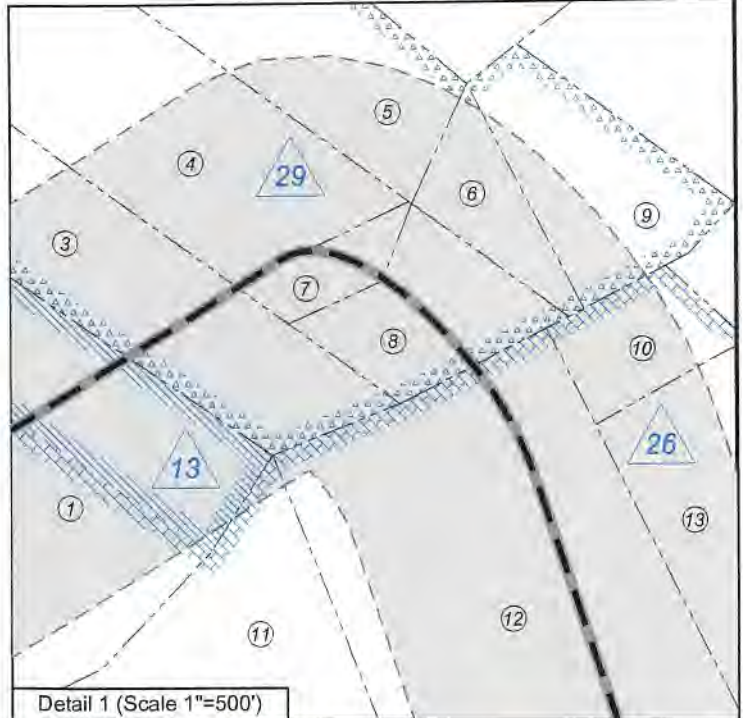




ID	Lease
13	Alda V. Hitt
15	Charles F. Bailey, et al
23	WVU Board of Governors
25	W.A. Chittum, et al
26	W.D. Hitt, et al
28	Charles F. Bailey, et al
29	Susan R. Hall, et al
56	James H. Hall Trust
57	A. W. Woodford, et al
58	Tawana Butcher, et al
63	Prudence M. O'hara, et al
67	The A. Edward O'Hara and Jean O'Hara Inter Vivos Trust, et al.
200	WV DNR

Lewis Co. - Freeman Creek Dist.

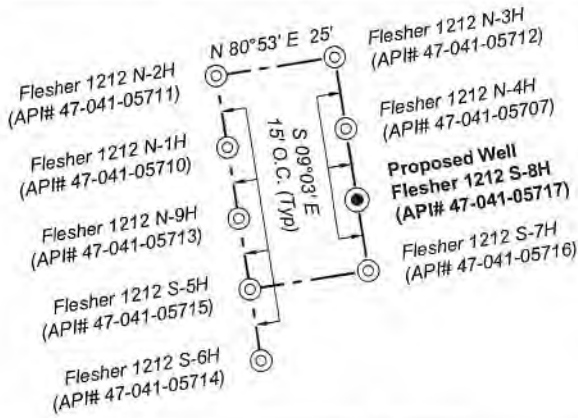
No.	TM / Par	Owner	Bk / Pg	Ac.
1	6C / 47	HG Energy II Appalachia, LLC	753 / 453	70.00
2	6C / 43	Gary Allan Sias	646 / 688	50.59
3	6C / 48	Marlene Hovis	672 / 411	15.00
4	6C / 49	Marlene Hovis	672 / 411	12.90
5	6C / 51	Marlene Hovis	672 / 411	14.90
6	6C / 51.1	Kenneth B. & Lydia M. Burroughs	504 / 216	2.35
7	6C / 52.1	Marlene Hovis	672 / 411	1.37
8	6C / 52	Kenneth B. & Lydia M. Burroughs	420 / 196	3.70
9	6C / 55	Kenneth B. & Lydia M. Burroughs	336 / 47	5.10
10	6C / 54	Kenneth B. & Lydia M. Burroughs	336 / 47	2.00
11	6C / 45	Fred A. Bailey	W25 / 263	48.00
12	6C / 46	Fred A. Bailey	W25 / 263	47.00
13	6C / 53	Kenneth B. & Lydia M. Burroughs	336 / 47	11.00
14	7C / 7	Bette Gerath	W20 / 230	34.00
15	7C / 9	Bette Gerath	397 / 214	31.00
16	7C / 10	Bette Gerath	397 / 214	4.20
17	7C / 16	Charles D. & Fred A. Bailey	763 / 630	130.50
18	7C / 12	Aubrey E. Jr. & Donna M. Smith	740 / 926	36.35
19	7C / 15	Dixie & Wilma Wine	536 / 490	1.15
20	7D / 3	Fred & Ginger Bailey	653 / 717	21.18
21	7D / 32	WVU Board of Governors	584 / 524	221.65
22	7D / 2.1	Fred & Ginger Bailey	616 / 179	3.77
23	7D / 32.3	Jackson Mill Cemetery	112 / 45	0.54
24	2 / 55	Jacksons Mill Baptist Church Trustees	128 / 211	0.72
25	2 / 56	Betty S. Enoch	FID29 / 547	0.72
26	2 / 65	Betty S. Enoch	FID29 / 547	1.26
27	2 / 66	Betty S. Enoch	FID29 / 547	2.90
28	7E / 32	Euda M. and Thomas E. Daniels Jr.	528 / 278	13.68
29	7E / 32.1	Douglas R. Blake	678 / 644	0.40
30	7E / 35.1	Weston Sanitary Board	730 / 617	0.06
31	7E / 35	John K. & Susan Butcher	730 / 558	3.17
32	7E / 36	Cumberland & Allegheny Gas Co.	119 / 51	5.77
33	4 / 37	John K. & Susan D. Butcher	590 / 301	6.20



No.	TM / Par	Owner	Bk / Pg	Ac.
34	7D / 5	WVU Board of Governors	584 / 524	323.00
35	7D / 9.3	Swisher LLC	739 / 833	473.38
36	7D / 6.1	Waco O&G & Mike Ross Inc.	638 / 735	0.88
37	7D / 9.2	Waco Oil & Gas and Mike Ross Inc.	714 / 321	2.28
38	7D / 8	Waco Oil & Gas and Mike Ross Inc.	714 / 321	4.45
39	7D / 7	Mike Ross, Inc.	630 / 238	37.97
40	7D / 7.1	City of Weston Sanitary Board	732 / 51	0.03
41	7D / 9.1	Deerfield Country Club, Inc	359 / 409	98.83
42	7E / 67	Delores B. Adler	W19 / 682	3.00
43	7E / 68	Delores B. Adler	359 / 421	67.11
44	7E / 1	Georgeann Fallon	336 / 362	0.88
45	7E / 2	Linda K. Probst	W44 / 691	0.72



Wellhead Layout (NTS)



FILE NO: 156-36-12-U-F-19  
DRAWING NO: Flesher 1212 S-8H Well Plat  
SCALE: 1" = 2000'  
MINIMUM DEGREE OF ACCURACY: Submeter  
PROVEN SOURCE OF ELEVATION: CORS, Bridgeport, WV

**STATE OF WEST VIRGINIA**  
DEPARTMENT OF ENVIRONMENTAL PROTECTION  
**OIL AND GAS DIVISION**

DATE: June 3 20 21  
OPERATOR'S WELL NO. Flesher 1212 S-8H  
API WELL NO **MOD**  
47 - 041 - 05717  
STATE COUNTY PERMIT

WELL TYPE:  OIL  GAS  LIQUID INJECTION  WASTE DISPOSAL  
(IF GAS) PRODUCTION:  STORAGE  DEEP  SHALLOW

LOCATION: ELEVATION: 1,332.2' WATERSHED: Middle West Fork Creek

QUADRANGLE: Weston

DISTRICT: Freemans Creek

COUNTY: Lewis

SURFACE OWNER: H.G. Energy II Appalachia, LLC

ACREAGE: 70.00

ROYALTY OWNER: W.D. Hitt, et al, et al

LEASE NO: ACREAGE: 210.00

PROPOSED WORK:  DRILL  CONVERT  DRILL DEEPER  FRACTURE OR STIMULATE  PLUG OFF OLD FORMATION  
 PERFORATE NEW FORMATION  OTHER PHYSICAL CHANGE IN WELL (SPECIFY) LP & BH MOD

PLUG AND ABANDON  CLEAN OUT AND REPLUG TARGET FORMATION: Marcellus Shale ESTIMATED DEPTH: 6,913' TVD 23,486' MD

WELL OPERATOR: HG Energy II Appalachia, LLC  
ADDRESS: 5260 Dupont Road  
Parkersburg, WV 26101

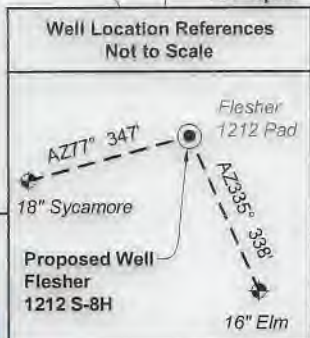
DESIGNATED AGENT: Diane C. White  
ADDRESS: 5260 Dupont Road  
Parkersburg, WV 26101





I, the undersigned, hereby certify that this plat is correct to the best of my knowledge and belief and shows all the information required by law and the rules issued and prescribed by the Department of Environmental Protection.

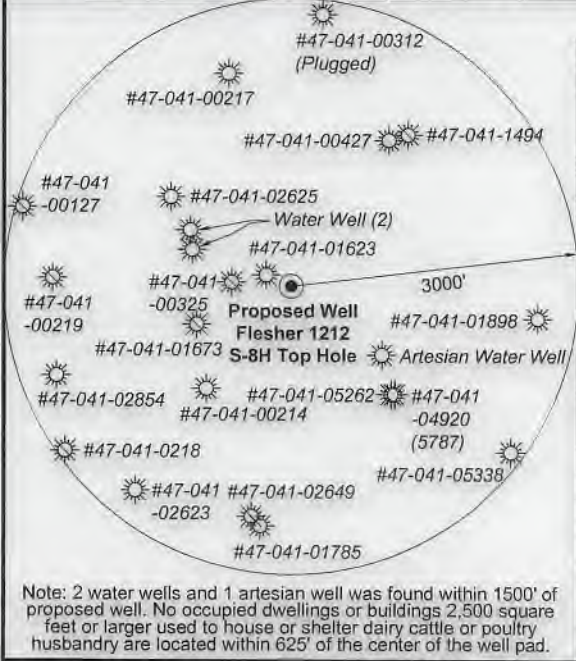
*Kevin S. James*  
Kevin S. James, P.S. 2305



Legend

- Proposed gas well
- Well Reference, as noted
- Monument, as noted
- Existing Well, as noted
- Digitized Well, as noted
- Creek or Drain
- Existing Road
- Surface boundary (approx.)
- Interior surface tracts (approx.)

Tag	Bearing	Dist.	Description
L1	N 42°25' W	1,526.1'	#47-041-05262
L2	N 24°09' E	677.0'	1/2" Rebar
L3	N 68°12' E	1,618.8'	1" Iron pipe
L4	S 53°37' E	1,573.0'	#47-041-02625
L5	N 84°57' E	1,945.0'	Landing point



Notes:  
Well No. Flesher 1212 S-8H  
UTM NAD 1983 (USSF)  
Top Hole Coordinates  
N: 14,206,101.35'  
E: 1,785,749.47'  
Landing Point Coordinates  
N: 14,206,272.69'  
E: 1,787,886.94'  
Bottom Hole Coordinates  
N: 14,191,388.68'  
E: 1,792,691.69'

Notes: Well No. Flesher 1212 S-8H  
West Virginia Coordinate System of 1927, North Zone based upon Differential GPS Measurements.  
Top Hole coordinates Latitude: 39°07'05.51" Longitude: 80°29'15.95"  
Bottom Hole coordinates Latitude: 39°04'39.64" Longitude: 80°27'48.95"  
UTM Zone 17, NAD 1983  
Top Hole Coordinates N: 4,330,028.356m E: 544,297.528m  
Bottom Hole Coordinates N: 4,325,543.925m E: 546,413.519m  
Plat orientation and corner and well references are based upon the grid north meridian. Well location references are based upon the magnetic meridian.

FILE NO: 156-36-12-U-F-19  
DRAWING NO: Flesher 1212 S-8H Well Plat  
SCALE: 1" = 2000'  
MINIMUM DEGREE OF ACCURACY: Submeter  
PROVEN SOURCE OF ELEVATION: CORS, Bridgeport, WV

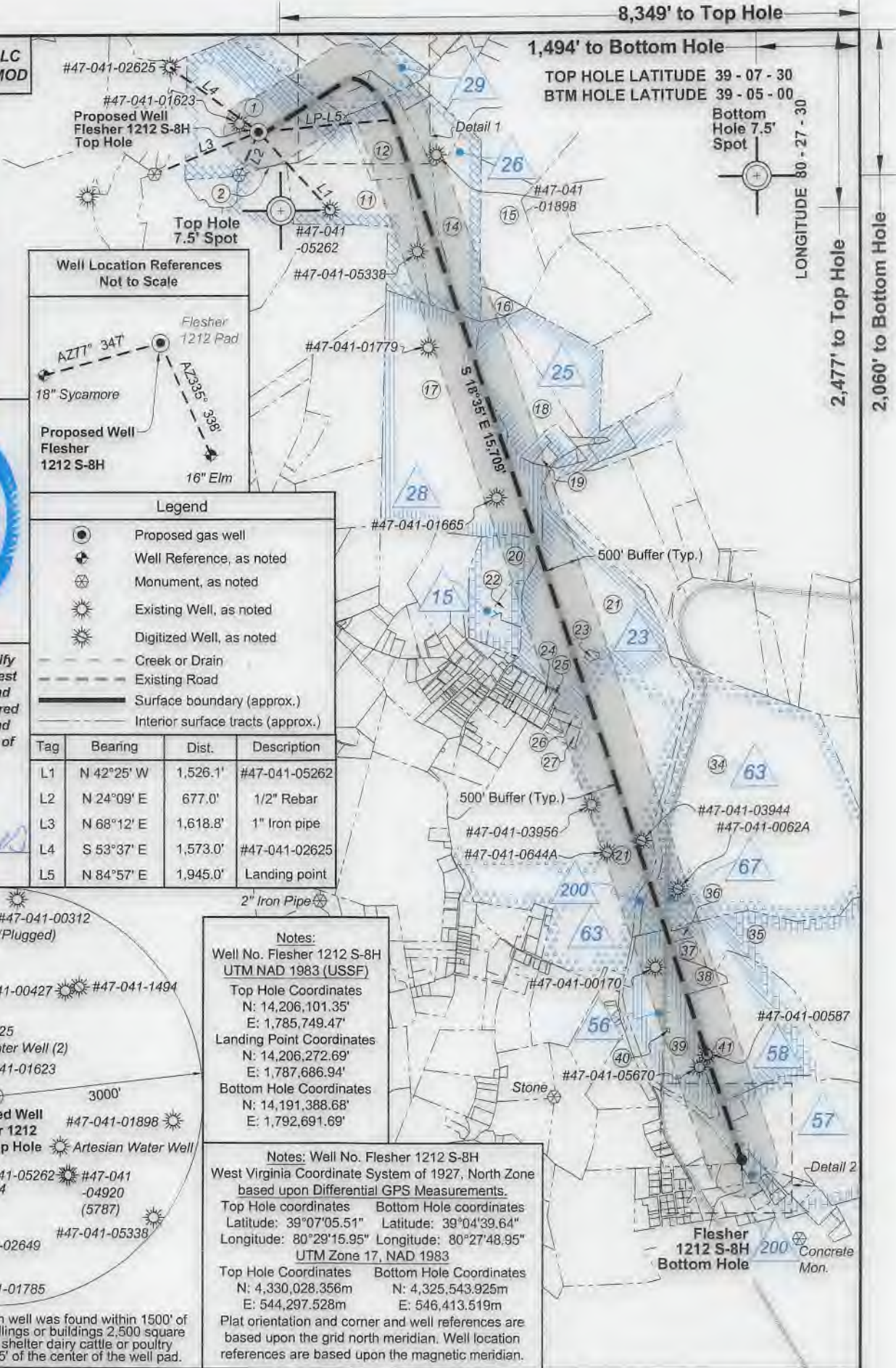
**STATE OF WEST VIRGINIA**  
DEPARTMENT OF ENVIRONMENTAL PROTECTION  
**OIL AND GAS DIVISION**

DATE: June 3 2021  
OPERATOR'S WELL NO. Flesher 1212 S-8H  
API WELL NO MOD  
47 - 041 - 05717  
STATE COUNTY PERMIT

WELL TYPE:  OIL  GAS  LIQUID INJECTION  WASTE DISPOSAL  
(IF GAS) PRODUCTION:  STORAGE  DEEP  SHALLOW

LOCATION: ELEVATION: 1,332.2' WATERSHED: Middle West Fork Creek  
DISTRICT: Freemans Creek  
SURFACE OWNER: H.G. Energy II Appalachia, LLC  
ROYALTY OWNER: W.D. Hitt, et al, et al LEASE NO: ACREAGE: 210.00  
PROPOSED WORK:  DRILL  CONVERT  DRILL DEEPER  FRACTURE OR STIMULATE  PLUG OFF OLD FORMATION  
 PERFORATE NEW FORMATION  OTHER PHYSICAL CHANGE IN WELL (SPECIFY) LP & BH MOD  
 PLUG AND ABANDON  CLEAN OUT AND REPLUG TARGET FORMATION: Marcellus Shale ESTIMATED DEPTH: 23,486' MD

WELL OPERATOR: HG Energy II Appalachia, LLC DESIGNATED AGENT: Diane C. White  
ADDRESS: 5260 Dupont Road ADDRESS: 5260 Dupont Road  
Parkersburg, WV 26101 Parkersburg, WV 26101



07/02/2021

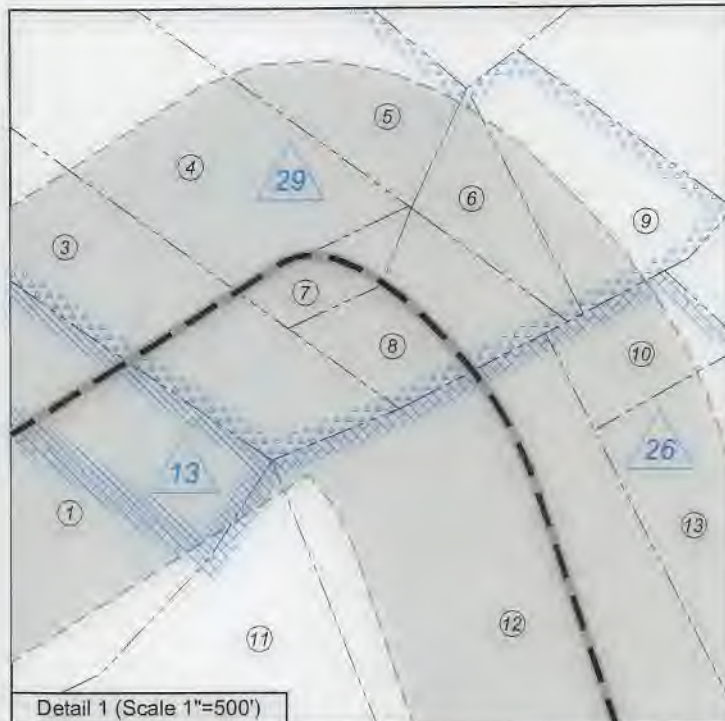


ID	Lease
13	Aida V. Hitt
15	Charles F. Bailey, et al
23	WVU Board of Governors
25	W.A. Chittum, et al
26	W.D. Hitt, et al
28	Charles F. Bailey, et al
29	Susan R. Hall, et al
56	James H. Hall Trust
57	A. W. Woodford, et al
58	Tawana Butcher, et al
63	Prudence M. O'hara, et al
67	The A. Edward O'Hara and Jean O'Hara Inter Vivos Trust, et al.
200	WV DNR



Lewis Co. - Freeman Creek Dist.

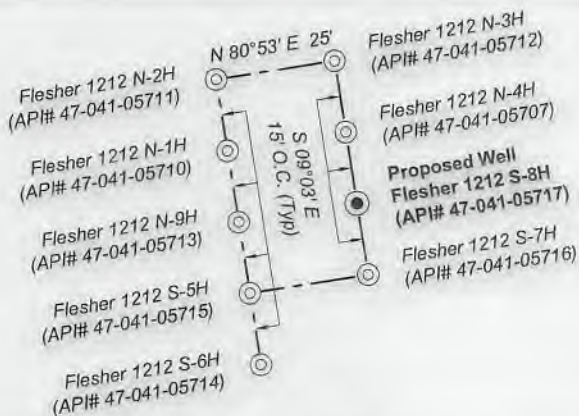
No.	TM / Par	Owner	Bk / Pg	Ac.
1	6C / 47	HG Energy II Appalachia, LLC	753 / 453	70.00
2	6C / 43	Gary Allan Sias	646 / 688	50.59
3	6C / 48	Marlene Hovis	672 / 411	15.00
4	6C / 49	Marlene Hovis	672 / 411	12.90
5	6C / 51	Marlene Hovis	672 / 411	14.90
6	6C / 51.1	Kenneth B. & Lydia M. Burroughs	504 / 216	2.35
7	6C / 52.1	Marlene Hovis	672 / 411	1.37
8	6C / 52	Kenneth B. & Lydia M. Burroughs	420 / 196	3.70
9	6C / 55	Kenneth B. & Lydia M. Burroughs	336 / 47	5.10
10	6C / 54	Kenneth B. & Lydia M. Burroughs	336 / 47	2.00
11	6C / 45	Fred A. Bailey	W25 / 263	48.00
12	6C / 46	Fred A. Bailey	W25 / 263	47.00
13	6C / 53	Kenneth B. & Lydia M. Burroughs	336 / 47	11.00
14	7C / 7	Bette Gerath	W20 / 230	34.00
15	7C / 9	Bette Gerath	397 / 214	31.00
16	7C / 10	Bette Gerath	397 / 214	4.20
17	7C / 16	Charles D. & Fred A. Bailey	763 / 630	130.50
18	7C / 12	Aubrey E. Jr. & Donna M. Smith	740 / 926	36.35
19	7C / 15	Dixie & Wilma Wine	536 / 490	1.15
20	7D / 3	Fred & Ginger Bailey	653 / 717	21.18
21	7D / 32	WVU Board of Governors	584 / 524	221.65
22	7D / 2.1	Fred & Ginger Bailey	616 / 179	3.77
23	7D / 32.3	Jackson Mill Cemetery	112 / 45	0.54
24	2 / 55	Jacksons Mill Baptist Church Trustees	128 / 211	0.72
25	2 / 56	Betty S. Enoch	FID29 / 547	0.72
26	2 / 65	Betty S. Enoch	FID29 / 547	1.26
27	2 / 66	Betty S. Enoch	FID29 / 547	2.90
28	7E / 32	Euda M. and Thomas E. Daniels Jr.	528 / 278	13.68
29	7E / 32.1	Douglas R. Blake	678 / 644	0.40
30	7E / 35.1	Weston Sanitary Board	730 / 617	0.06
31	7E / 35	John K. & Susan Butcher	730 / 558	3.17
32	7E / 36	Cumberland & Allegheny Gas Co.	119 / 51	5.77
33	4 / 37	John K. & Susan D. Butcher	590 / 301	6.20



No.	TM / Par	Owner	Bk / Pg	Ac.
34	7D / 5	WVU Board of Governors	584 / 524	323.00
35	7D / 9.3	Swisher LLC	739 / 833	473.38
36	7D / 6.1	Waco O&G & Mike Ross Inc.	638 / 735	0.88
37	7D / 9.2	Waco Oil & Gas and Mike Ross Inc.	714 / 321	2.28
38	7D / 8	Waco Oil & Gas and Mike Ross Inc.	714 / 321	4.45
39	7D / 7	Mike Ross, Inc.	630 / 238	37.97
40	7D / 7.1	City of Weston Sanitary Board	732 / 51	0.03
41	7D / 9.1	Deerfield Country Club, Inc	359 / 409	98.83
42	7E / 67	Delores B. Adler	W19 / 682	3.00
43	7E / 68	Delores B. Adler	359 / 421	67.11
44	7E / 1	Georgeann Fallon	336 / 362	0.88
45	7E / 2	Linda K. Probst	W44 / 691	0.72



Wellhead Layout (NTS)



FILE NO: 156-36-12-U-F-19  
DRAWING NO: Flesher 1212 S-8H Well Plat  
SCALE: 1" = 2000'  
MINIMUM DEGREE OF ACCURACY: Submeter  
PROVEN SOURCE OF ELEVATION: CORS, Bridgeport, WV

**STATE OF WEST VIRGINIA**  
DEPARTMENT OF ENVIRONMENTAL PROTECTION  
**OIL AND GAS DIVISION**

DATE: June 3 2021  
OPERATOR'S WELL NO. Flesher 1212 S-8H  
API WELL NO MOD  
47 - 041 - 05717  
STATE COUNTY PERMIT

WELL TYPE:  OIL  GAS  LIQUID INJECTION  WASTE DISPOSAL  
(IF GAS) PRODUCTION:  STORAGE  DEEP  SHALLOW

LOCATION: ELEVATION: 1,332.2' WATERSHED: Middle West Fork Creek

QUADRANGLE: Weston  
COUNTY: Lewis  
ACREAGE: 70.00

DISTRICT: Freemans Creek  
SURFACE OWNER: H.G. Energy II Appalachia, LLC

ROYALTY OWNER: W.D. Hitt, et al, et al LEASE NO: ACREAGE: 210.00

PROPOSED WORK:  DRILL  CONVERT  DRILL DEEPER  FRACTURE OR STIMULATE  PLUG OFF OLD FORMATION  
 PERFORATE NEW FORMATION  OTHER PHYSICAL CHANGE IN WELL (SPECIFY) LP & BH MOD

PLUG AND ABANDON  CLEAN OUT AND REPLUG TARGET FORMATION: Marcellus Shale ESTIMATED DEPTH: 6,913' TVD 23,486' MD

WELL OPERATOR: HG Energy II Appalachia, LLC  
ADDRESS: 5260 Dupont Road  
Parkersburg, WV 26101

DESIGNATED AGENT: Diane C. White  
ADDRESS: 5260 Dupont Road  
Parkersburg, WV 26101



WW-6A1  
(5/13)

Operator's Well No. Flesher 1212 S-8H

**INFORMATION SUPPLIED UNDER WEST VIRGINIA CODE  
Chapter 22, Article 6A, Section 5(a)(5)  
IN LIEU OF FILING LEASE(S) AND OTHER CONTINUING CONTRACT(S)**

Under the oath required to make the verification on page 1 of this Notice and Application, I depose and say that I am the person who signed the Notice and Application for the Applicant, and that –

- (1) the tract of land is the same tract described in this Application, partly or wholly depicted in the accompanying plat, and described in the Construction and Reclamation Plan;
- (2) the parties and recordation data (if recorded) for lease(s) or other continuing contract(s) by which the Applicant claims the right to extract, produce or market the oil or gas are as follows:

Lease Name or Number	Grantor, Lessor, etc.	Grantee, Lessee, etc.	Royalty	Book/Page
-------------------------	-----------------------	-----------------------	---------	-----------

**\*\*See Attached Sheets\*\***

**Acknowledgement of Possible Permitting/Approval  
In Addition to the Office of Oil and Gas**

The permit applicant for the proposed well work addressed in this application hereby acknowledges the possibility of the need for permits and/or approvals from local, state, or federal entities in addition to the DEP, Office of Oil and Gas, including but not limited to the following:

- WV Division of Water and Waste Management
- WV Division of Natural Resources WV Division of Highways
- U.S. Army Corps of Engineers
- U.S. Fish and Wildlife Service
- County Floodplain Coordinator

RECEIVED  
Office of Oil and Gas  
  
JUN 07 2021  
  
WV Department of  
Environmental Protection

The applicant further acknowledges that any Office of Oil and Gas permit in no way overrides, replaces, or nullifies the need for other permits/approvals that may be necessary and further affirms that all needed permits/approvals should be acquired from the appropriate authority before the affected activity is initiated.

Well Operator: HG Energy II Appalachia, LLC  
 By: Diane White  
 Its: Accountant



HG Energy II Appalachia, LLC - 1212 S-8H LEASE CHAIN

RECEIVED  
Office of Oil and Gas  
JUN 07 2021  
WV Department of  
Environmental Protection

TRACT #1212S	LEGACY LEASE NUMBER	TAX MAP	LEASE NUMBER	GRANTOR/LESSOR	GRANTEE/LESSEE	ROYALTY	DEED BOOK	PAGE
26	FK053270	03-006C-0045-0000 03-006C-0046-0000 03-006C-0053-0000 03-006C-0054-0000 03-007C-0007-0000 p/o 03-006C-0043-0000 p/o 03-006C-0043-0001 p/o 03-006C-0047-0000	Q100675000	W. D. HITT AND ALDA HITT, HIS WIFE; J. C. HITT AND DORA HITT, HIS WIFE; L.A. MCCARTY AND F. R. MCCARTY, HER HUSBAND; GEORGE W. NEELY AND GRACE M. NEELY, HIS WIFE	RESERVE GAS COMPANY	NOT LESS THAN 1/8	68	524
				RESERVE GAS COMPANY	HOPE NATURAL GAS COMPANY	CONFIRMATORY DEED	155	202
				HOPE NATURAL GAS COMPANY	CONSOLIDATED GAS SUPPLY CORPORATION	CONFIRMATORY DEED	294	89
				CONSOLIDATED GAS SUPPLY CORPORATION	CONSOLIDATED GAS TRANSMISSION CORPORATION	ASSIGNMENT	425	127
				CONSOLIDATED GAS TRANSMISSION CORPORATION	CNG TRANSMISSION CORPORATION	MERGER/NAME CHANGE	WVSOS	
				CNG TRANSMISSION CORPORATION	DOMINION TRANSMISSION, INC.	MERGER/NAME CHANGE	WVSOS	
				DOMINION TRANSMISSION, INC.	CNX GAS COMPANY LLC	MEMORANDUM FARMOUT AGREEMENT	672	154
				CNX GAS COMPANY LLC	NOBLE ENERGY, INC.	LIMITED PARTIAL ASSIGNMENT (50%)	684	57
				DOMINION TRANSMISSION, INC.	CNX GAS COMPANY LLC AND NOBLE ENERGY, INC.	PARTIAL ASSIGNMENT (32%)	712	848
				CNX GAS COMPANY LLC	NOBLE ENERGY, INC.	ASSIGNMENT	717	1
				NOBLE ENERGY, INC.	HG ENERGY II APPALACHIA, LLC	ASSIGNMENT	722	139
				DOMINION TRANSMISSION, INC.	DOMINION ENERGY TRANSMISSION, INC.	MERGER/NAME CHANGE	WVSOS	
				DOMINION ENERGY TRANSMISSION, INC.	HG ENERGY II APPALACHIA, LLC	SECOND AMENDMENT TO MEMORANDUM OF FARMOUT AGREEMENT	723	499
				DOMINION ENERGY TRANSMISSION, INC.	HG ENERGY II APPALACHIA, LLC	THIRD AMENDMENT TO MEMORANDUM OF FARMOUT AGREEMENT	734	558
DOMINION ENERGY TRANSMISSION, INC.	HG ENERGY II APPALACHIA, LLC	ASSIGNMENT (68%)	736	220				
13	FK064389	p/o 03-006C-0047-0000	Q100438000	ALDA V. HITT, WIDOW	HOPE NATURAL GAS COMPANY	NOT LESS THAN 1/8	221	228
				HOPE NATURAL GAS COMPANY	CONSOLIDATED GAS SUPPLY CORPORATION	CONFIRMATORY DEED	294	89
				CONSOLIDATED GAS SUPPLY CORPORATION	CONSOLIDATED GAS TRANSMISSION CORPORATION	ASSIGNMENT	425	127
				CONSOLIDATED GAS TRANSMISSION CORPORATION	CNG TRANSMISSION CORPORATION	MERGER/NAME CHANGE	WVSOS	
				CNG TRANSMISSION CORPORATION	DOMINION TRANSMISSION, INC.	MERGER/NAME CHANGE	WVSOS	
				DOMINION TRANSMISSION, INC.	CNX GAS COMPANY LLC	MEMORANDUM OF FARMOUT AGREEMENT	672	154
				CNX GAS COMPANY LLC	NOBLE ENERGY, INC.	LIMITED PARTIAL ASSIGNMENT (50%)	684	57
				DOMINION TRANSMISSION, INC.	CNX GAS COMPANY LLC AND NOBLE ENERGY, INC.	PARTIAL ASSIGNMENT (32%)	712	848
				CNX GAS COMPANY LLC	NOBLE ENERGY, INC.	ASSIGNMENT	717	1
				NOBLE ENERGY, INC.	HG ENERGY II APPALACHIA, LLC	ASSIGNMENT	722	139
				NOBLE ENERGY, INC.	HG ENERGY II APPALACHIA, LLC	ASSIGNMENT	722	170
				DOMINION TRANSMISSION, INC.	DOMINION ENERGY TRANSMISSION, INC.	MERGER/NAME CHANGE	WVSOS	
				DOMINION ENERGY TRANSMISSION, INC.	HG ENERGY II APPALACHIA, LLC	SECOND AMENDMENT TO MEMORANDUM OF FARMOUT AGREEMENT	723	499
				DOMINION ENERGY TRANSMISSION, INC.	HG ENERGY II APPALACHIA, LLC	THIRD AMENDMENT TO MEMORANDUM OF FARMOUT AGREEMENT	734	558
DOMINION ENERGY TRANSMISSION, INC.	HG ENERGY II APPALACHIA, LLC	ASSIGNMENT (68%)	736	220				
				SUSAN R. HALL, J. W. HALL, ALDA J. HALL AND MARY HALL	SOUTH PENN OIL COMPANY	NOT LESS THAN 1/8	42	91
				SOUTH PENN OIL COMPANY	HOPE NATURAL GAS COMPANY	ASSIGNMENT	85	127
				HOPE NATURAL GAS COMPANY	RESERVE GAS COMPANY	ASSIGNMENT	79	370
				SOUTH PENN OIL COMPANY	RESERVE GAS COMPANY	ASSIGNMENT	79	237
				RESERVE GAS COMPANY	HOPE NATURAL GAS COMPANY	CONFIRMATORY DEED	155	202



29	FK053178	03-006C-0048-0000 03-006C-0049-0000 03-006C-0051-0000 03-006C-0051-0001 03-006C-0052-0000 03-006C-0052-0001 03-006C-0055-0000	Q100482000	GERTRUDE R. ALLMAN , W. A. CHITTUM AND ZURA CHITTUM, HIS WIFE; CLAUDE B. HALL AND META HALL, HIS WIFE; M. O. BROWN, JOHN C. CHITTUM AND MABEL CHITTUM, HIS WIFE; HOMER L. CHITTUM AND JEWEL E. CHITTUM, HIS WIFE; RUBY FOSTER AND H.B. FOSTER, HER HUSBAND; JACK HALL, BLANCH V. FLETCHER, ANNCY M. STALNACKER AND DANIEL D. STALNACKER, HER HUSBAND; JOE HALL AND DOROTHY HALL, HIS WIFE; OVAL L. HALL, JOHN H. HALL AND MARY K. HALL, HIS WIFE; J. A. CHITTUM AND MARY E. CHITTUM, HIS WIFE; ELIZABETH HALL KING, AND EUGENE T. KING, HER HUSBAND; HOMER HALL JR. , AND FANNIE MAE HALL, HIS WIFE; PEARL A. ULLOM AND WILLIAM ULLOM SR., HER HUSBAND; ROSE M. HALL, JOHN H. HALL AND RUTH HALL, HIS WIFE; LILLIAN MOON AND BERNARD R. MOON, ER HUSBAND; ALDA V. HITT	HOPE NATURAL GAS COMPANY	STORAGE GRANT	222	74
				HOPE NATURAL GAS COMPANY	CONSOLIDATED GAS SUPPLY CORPORATION	CONFIRMATORY DEED	294	89
				CONSOLIDATED GAS SUPPLY CORPORATION	CONSOLIDATED GAS TRANSMISSION CORPORATION	ASSIGNMENT	425	127
				CONSOLIDATED GAS TRANSMISSION CORPORATION	CNG TRANSMISSION CORPORATION	MERGER/NAME CHANGE		WVSOS
				CNG TRANSMISSION CORPORATION	DOMINION TRANSMISSION, INC.	MERGER/NAME CHANGE		WVSOS
				DOMINION TRANSMISSION, INC.	CNX GAS COMPANY LLC	MEMORANDUM OF FARMOUT AGREEMENT	672	154
				CNX GAS COMPANY LLC	NOBLE ENERGY, INC.	LIMITED PARTIAL ASSIGNMENT (50%)	684	57
				DOMINION TRANSMISSION, INC.	CNX GAS COMPANY LLC AND NOBLE ENERGY, INC.	PARTIAL ASSIGNMENT (32%)	712	848
				CNX GAS COMPANY LLC	NOBLE ENERGY, INC.	ASSIGNMENT	717	1
				NOBLE ENERGY, INC.	HG ENERGY II APPALACHIA, LLC	ASSIGNMENT	722	139
				NOBLE ENERGY, INC.	HG ENERGY II APPALACHIA, LLC	ASSIGNMENT	722	170
				DOMINION TRANSMISSION, INC.	DOMINION ENERGY TRANSMISSION, INC.	MERGER/NAME CHANGE		WVSOS
				DOMINION ENERGY TRANSMISSION, INC.	HG ENERGY II APPALACHIA, LLC	SECOND AMENDMENT TO MEMORANDUM OF FARMOUT AGREEMENT	723	499
				DOMINION ENERGY TRANSMISSION, INC.	HG ENERGY II APPALACHIA, LLC	THIRD AMENDMENT TO MEMORANDUM OF FARMOUT AGREEMENT	734	558
				DOMINION ENERGY TRANSMISSION, INC.	HG ENERGY II APPALACHIA, LLC	ASSIGNMENT (68%)	736	220
28	FK062268	03-007C-0016-0000	Q100938000	CHARLES F. BAILEY AND MARY JANE BAILEY, HIS WIFE; AND DAYTON D. REXROAD AND ROXIE E. REXROAD, HIS WIFE	HOPE NATURAL GAS COMPANY	NOT LESS THAN 1/8	212	308
				HOPE NATURAL GAS COMPANY	CONSOLIDATED GAS SUPPLY CORPORATION	CONFIRMATORY DEED	294	89
				CONSOLIDATED GAS SUPPLY CORPORATION	CONSOLIDATED GAS TRANSMISSION CORPORATION	ASSIGNMENT	425	127
				CONSOLIDATED GAS TRANSMISSION CORPORATION	CNG TRANSMISSION CORPORATION	MERGER/NAME CHANGE		WVSOS
				CNG TRANSMISSION CORPORATION	DOMINION TRANSMISSION, INC.	MERGER/NAME CHANGE		WVSOS
				DOMINION TRANSMISSION, INC.	CNX GAS COMPANY LLC	MEMORANDUM FARMOUT AGREEMENT	672	154
				CNX GAS COMPANY LLC	NOBLE ENERGY, INC.	LIMITED PARTIAL ASSIGNMENT (50%)	684	57
				DOMINION TRANSMISSION, INC.	CNX GAS COMPANY LLC AND NOBLE ENERGY, INC.	PARTIAL ASSIGNMENT (32%)	712	848
				CNX GAS COMPANY LLC	NOBLE ENERGY, INC.	ASSIGNMENT	717	1
				NOBLE ENERGY, INC.	HG ENERGY II APPALACHIA, LLC	ASSIGNMENT	722	139
				DOMINION TRANSMISSION, INC.	DOMINION ENERGY TRANSMISSION, INC.	MERGER/NAME CHANGE		WVSOS
				DOMINION ENERGY TRANSMISSION, INC.	HG ENERGY II APPALACHIA, LLC	SECOND AMENDMENT TO MEMORANDUM OF FARMOUT AGREEMENT	723	499
				DOMINION ENERGY TRANSMISSION, INC.	HG ENERGY II APPALACHIA, LLC	THIRD AMENDMENT TO MEMORANDUM OF FARMOUT AGREEMENT	734	558
				DOMINION ENERGY TRANSMISSION, INC.	HG ENERGY II APPALACHIA, LLC	ASSIGNMENT	736	220
				25	FK063153	03-007C-0011-0000 03-007C-0011-0001 03-007C-0012-0000 03-07C-0013-0000 p/o 03-007C-0014-0000	Q100397000 Q101047000	W. A. CHITTUM AND ZURA F. CHITTUM, HIS WIFE
H. L. CHITTUM AND JEWEL E. CHITTUM, HIS WIFE	HOPE NATURAL GAS COMPANY	NOT LESS THAN 1/8	217					422
HOPE NATURAL GAS COMPANY	CONSOLIDATED GAS SUPPLY CORPORATION	CONFIRMATORY DEED	294					89
CONSOLIDATED GAS SUPPLY CORPORATION	CONSOLIDATED GAS TRANSMISSION CORPORATION	ASSIGNMENT	425					127
CONSOLIDATED GAS TRANSMISSION CORPORATION	CNG TRANSMISSION CORPORATION	MERGER/NAME CHANGE						WVSOS
CNG TRANSMISSION CORPORATION	DOMINION TRANSMISSION, INC.	MERGER/NAME CHANGE						WVSOS
DOMINION TRANSMISSION, INC.	CNX GAS COMPANY LLC	MEMORANDUM FARMOUT AGREEMENT	672					154
CNX GAS COMPANY LLC	NOBLE ENERGY, INC.	LIMITED PARTIAL ASSIGNMENT (50%)	684					57
DOMINION TRANSMISSION, INC.	CNX GAS COMPANY LLC AND NOBLE ENERGY, INC.	PARTIAL ASSIGNMENT (32%)	712					848



		03-007C-0017-0000 03-007C-0018-0000 p/o 03-007C-0019		CNX GAS COMPANY LLC NOBLE ENERGY, INC. DOMINION TRANSMISSION, INC. DOMINION ENERGY TRANSMISSION, INC. DOMINION ENERGY TRANSMISSION, INC.	NOBLE ENERGY, INC. HG ENERGY II APPALACHIA, LLC DOMINION ENERGY TRANSMISSION, INC. HG ENERGY II APPALACHIA, LLC HG ENERGY II APPALACHIA, LLC	ASSIGNMENT ASSIGNMENT MERGER/NAME CHANGE SECOND AMENDMENT TO MEMORANDUM OF FARMOUT AGREEMENT AMENDED AND RESTATED PARTIAL ASSIGNMENT	717 722 WVSOS 723 723	1 139  499 527
15	FK108052 DAD37328	03-007D-0003-0000 03-007D-0002-0000 03-007D-0002-0001	Q100743000	CHARLES FRED BAILEY AND MARY JANE BAILEY. HUSBAND AND WIFE SCOTT OIL COMPANY AND JAMES F. SCOTT DOMINION ENERGY, INC. DOMINION APPALACHIA DEVELOPMENT. LLC DOMINION RESERVES, INC DOMINION TRANSMISSION, INC. CNX GAS COMPANY LLC DOMINION TRANSMISSION, INC. CNX GAS COMPANY LLC NOBLE ENERGY, INC. DOMINION TRANSMISSION, INC. DOMINION ENERGY TRANSMISSION, INC. DOMINION ENERGY TRANSMISSION, INC. DOMINION ENERGY TRANSMISSION, INC.	SCOTT OIL COMPANY DOMINON ENERGY, INC. DOMINON RESERVES, INC. DOMINION TRANSMISSION, INC. CNX GAS COMPANY LLC CNX GAS COMPANY LLC NOBLE ENERGY, INC. CNX GAS COMPANY LLC AND NOBLE ENERGY, INC. NOBLE ENERGY, INC. HG ENERGY II APPALACHIA, LLC DOMINION ENERGY TRANSMISSION, INC. HG ENERGY II APPALACHIA, LLC HG ENERGY II APPALACHIA, LLC HG ENERGY II APPALACHIA, LLC	NOT LESS THAN 1/8 ASSIGNMENT ASSIGNMENT ASSIGNMENT MERGER/NAME CHANGE MEMORANDUM FARMOUT AGREEMENT LIMITED PARTIAL ASSIGNMENT (50%) PARTIAL ASSIGNMENT (32%) ASSIGNMENT ASSIGNMENT MERGER/NAME CHANGE SECOND AMENDMENT TO MEMORANDUM OF FARMOUT AGREEMENT THIRD AMENDMENT TO MEMORANDUM OF FARMOUT AGREEMENT ASSIGNMENT (68%)	459 468 472 651 9 672 684 712 717 722 WVSOS 723 734 736	145 592 281 225 471 154 57 848 1 170  499 558 220
23	N/A	p/o 03-007D-0032-0000	TBD	WEST VIRGINIA UNIVERSITY BOARD OF GOVERNORS	HG ENERGY II APPALACHIA, LLC	NOTICE OF AGREEMENT	767	472
63	CNX073150 CTO 268574000	03-007D-0032-0000 04-007D-0005-0000	DAD38531001-1005 FEEHGI0048 FEEHGI0049 FEEHGI0057 FEEHGI0059	PRUDENCE M. O'HARA AND C. A. O'HARA, HER HUSBAND; MATTHEW EDMISTON, JR. AND MILDRED EDMISTON, HIS WIFE; GEORGE B. EDMISTON, M. D. AND BEATRICE EDMISTON, HIS WIFE; VIRGINIA C. SANCHEZ AND FRANK SANCHEZ, HER HUSBAND; ELIZABETH E. BLAND AND JOSEPH H. BLAND, HER HUSBAND; JOHN M. EDMISTON AND EMILIE M. EDMISTON, HIS WIFE; ANDREW EDMISTON AND MARY ALICE EDMISTON, HIS WIFE; ANDREW EDMISTON AND BETH GAGE EDMISTON, HIS WIFE HOPE NATURAL GAS COMPANY CONSOLIDATED GAS SUPPLY CORPORATION CONSOLIDATED GAS TRANSMISSION CORPORATION CNG TRANSMISSION CORPORATION DOMINION TRANSMISSION, INC. DOMINION EXPLORATION & PRODUCTION, INC. DOMINION TRANSMISSION, INC. CONSOL ENERGY HOLDINGS, LLC, XVI CONSOL ENERGY HOLDINGS XVI CONSOL GAS COMPANY CNX GAS COMPANY LLC CNX GAS COMPANY LLC NOBLE ENERGY, INC.	HOPE NATURAL GAS COMPANY CONSOLIDATED GAS SUPPLY CORPORATION CONSOLIDATED GAS TRANSMISSION CORPORATION CNG TRANSMISSION CORPORATION DOMINION TRANSMISSION, INC. DOMINION EXPLORATION & PRODUCTION, INC. DOMINION TRANSMISSION, INC. CONSOL ENERGY HOLDINGS, LLC, XVI CONSOL GAS COMPANY CNX GAS COMPANY LLC NOBLE ENERGY, INC. HG ENERGY II APPALACHIA, LLC	NOT LESS THAN 1/8 CONFIRMATORY DEED ASSIGNMENT MERGER/NAME CHANGE MERGER/NAME CHANGE ASSIGNMENT ASSIGNMENT ASSIGNMENT MERGER/NAME CHANGE MERGER/NAME CHANGE MINERAL INTEREST DEED (50%) ASSIGNMENT ASSIGNMENT	289 294 425 WVSOS 9 622 651 651 WVSOS WVSOS 659 717 722	230 89 127  628 701 137 318  662 1 170
200	N/A	WEST FORK RIVER	HGII01229	WEST VIRGINIA DNR	HG ENERGY II APPALACHIA, LLC	NOT LESS THAN 1/8	762	495
67	HGII01334	04-007D-0005-0000	HGII01334	The A Edward & Jean Ann O'Hara Inter Vivos Tr Mike Ross, Inc. Ryan C. Radtka	HG ENERGY II APPALACHIA, LLC HG ENERGY II APPALACHIA, LLC HG ENERGY II APPALACHIA, LLC	NOT LESS THAN 1/8 NOT LESS THAN 1/8 NOT LESS THAN 1/8	765 761 765	6 567 275
56	N/A	04-007D-0007-0000 04-007D-0007-0001	HGII01513	JAMES H. HALL TRUST, BY CATHERINE H. YURA AND DEBORAH H. EDDY AS CO-TRUSTEES	HG ENERGY II APPALACHIA, LLC	NOT LESS THAN 1/8	768	779
				TAWANA BUTCHER AND BURTON B. BUTCHER, HER HUSBAND; THOMAS M. BUTCHER, SINGLE; AND BARBARA E. BUTCHER, SINGLE	SCOTT OIL COMPANY	NOT LESS THAN 1/8	459	541



RECEIVED  
 Office of Oil and Gas  
 JUN 07 2021  
 WV Department of  
 Environmental Protection

58	DAD37315001, DAD37315002, DAD37315003	04-007D-0006-0001 04-007D-0008-0000 p/o 04-007D-0009-0001 04-007D-0009-0002	DAD37315001, DAD37315002, DAD37315003	PATRICIA T. GARTON	SCOTT OIL COMPANY	NOT LESS THAN 1/8	459	543				
				ELIZABETH MAXWELL, WIDOW	SCOTT OIL COMPANY	NOT LESS THAN 1/8	460	311				
				SCOTT OIL COMPANY	JAMES H. HALL TRUST	PARTIAL ASSIGNMENT (5%)	463	650				
				SCOTT OIL COMPANY AND JAMES F. SCOTT	DOMINION ENERGY, INC	PARTIAL ASSIGNMENT	468	592				
				ROGER D. ZINN, AN DIVIDUAL, AND SPENCER E. WEISSINGER, AN INDIVIDUAL, AS TRUSTEES OF THE MEREDITH VANDEN SCOTT TRUST AND OF THE WILLIAM RANDOLPH SCOTT TRUST								
				BRADLEY W. THOMAS, AN INDIVIDUAL	DOMINION ENERGY, INC	ASSIGNMENT	468	638				
				DARRELL D. WRIGHT, AN INDIVIDUAL	DOMINION ENERGY, INC	ASSIGNMENT	469	1				
				JOHN T. HASKINS, AN INDIVIDUAL	DOMINION ENERGY, INC	ASSIGNMENT	469	46				
				THOMAS A. DINGLEDINE, AN INDIVIDUAL	DOMINION ENERGY, INC	ASSIGNMENT	469	91				
				COLLEEN K. MYERS, AN INDIVIDUAL	DOMINION ENERGY, INC	ASSIGNMENT	469	136				
				ROGER D. ZINN, AN INDIVIDUAL	DOMINION ENERGY, INC	ASSIGNMENT	469	181				
				G. EDWARD ARNOLD, AN INDIVIDUAL	DOMINION ENERGY, INC	ASSIGNMENT	469	226				
				DOMINION ENERGY, INC	DOMINION RESERVES, INC	ASSIGNMENT	469	272				
				DOMINION RESERVES, INC	CONSOL GAS RESERVES, INC	MERGER/NAME CHANGE	472	281				
				CONSOL GAS RESERVES, INC	CONSOL GAS COMPANY	MERGER/NAME CHANGE	9	298				
				CONSOL GAS COMPANY	CNX GAS COMPANY LLC	MERGER/NAME CHANGE	9	329				
				CNX GAS COMPANY LLC	NOBLE ENERGY, INC.	MERGER/NAME CHANGE	9	471				
				NOBLE ENERGY, INC.	HG ENERGY II APPALACHIA, LLC	ASSIGNMENT	717	1				
				57	CNX052705	p/o 04-007D-0009-0001 p/o 04-007D-0009-0003 04-007E-0001-0000 04-007E-0002-0000 04-007E-0003-0000 04-007E-0004-0000 04-007E-0004-0001 p/o 04-007E-0024-0000 04-007E-0025-0000 04-007E-0026-0000 04-007E-0067-0000 04-007E-0068-0000	CNX052705	A. W. WOODFORD AND SABRA WOODFORD	J. S. GLENN	NOT LESS THAN 1/8	30	545
								J. S. GLENN	THEODORE N. BARNSDALL	ASSIGNMENT	52	235
T. N. BARNSDALL, AND OTHERS	RESERVE GAS COMPANY	ASSIGNMENT	85					106				
RESERVE GAS COMPANY	HOPE NATURAL GAS COMPANY	CONFIRMATORY DEED	155					202				
HOPE NATURAL GAS COMPANY	CONSOLIDATED GAS SUPPLY CORPORATION	CONFIRMATORY DEED	294					89				
CONSOLIDATED GAS SUPPLY CORPORATION	CONSOLIDATED GAS TRANSMISSION CORPORATION	ASSIGNMENT	425					127				
CONSOLIDATED GAS TRANSMISSION CORPORATION	CNG TRANSMISSION CORPORATION	MERGER/NAME CHANGE						WVSOS				
CNG TRANSMISSION CORPORATION	DOMINION TRANSMISSION, INC.	MERGER/NAME CHANGE	9					628				
DOMINION TRANSMISSION, INC.	CONSOL ENERGY HOLDINGS LLC XVI	ASSIGNMENT	651					318				
CONSOL ENERGY HOLDINGS LLC XVI	CONSOL GAS COMPANY	MERGER/NAME CHANGE	9					471				
CONSOL GAS COMPANY	CNX GAS COMPANY LLC	MERGER/NAME CHANGE	9					471				
CNX GAS COMPANY LLC	NOBLE ENERGY, INC.	LIMITED PARTIAL ASSIGNMENT (50%)	659					521				
CNX GAS COMPANY LLC	NOBLE ENERGY, INC.	ASSIGNMENT	717					1				
NOBLE ENERGY, INC.	HG ENERGY II APPALACHIA, LLC	ASSIGNMENT	722					170				