

State of West Virginia  
Department of Environmental Protection - Office of Oil and Gas  
Well Operator's Report of Well Work

API 47-041-05723 County Lewis District Freemans Creek  
Quad Camden Pad Name Evans 1213 Field/Pool Name Kennedy  
Farm name Evans Well Number Evans 1213 S7H  
Operator (as registered with the OOG) HG Energy II Appalachia, LLC  
Address 5260 Dupont Rd. City Parkersburg State WV Zip 26101

As Drilled location NAD 83/UTM Attach an as-drilled plat, profile view, and deviation survey  
Top hole Northing 4329713.160 Easting 541937.608  
Landing Point of Curve Northing 4329892 Easting 542538  
Bottom Hole Northing 4324600.999 Easting 544414.814

Elevation (ft) 1228 GL Type of Well  New  Existing Type of Report  Interim  Final  
Permit Type  Deviated  Horizontal  Horizontal 6A  Vertical Depth Type  Deep  Shallow  
Type of Operation  Convert  Deepen  Drill  Plug Back  Redrilling  Rework  Stimulate  
Well Type  Brine Disposal  CBM  Gas  Oil  Secondary Recovery  Solution Mining  Storage  Other \_\_\_\_\_  
Type of Completion  Single  Multiple Fluids Produced  Brine  Gas  NGL  Oil  Other \_\_\_\_\_  
Drilled with  Cable  Rotary

Drilling Media Surface hole  Air  Mud  Fresh Water Intermediate hole  Air  Mud  Fresh Water  Brine  
Production hole  Air  Mud  Fresh Water  Brine  
Mud Type(s) and Additive(s)  
Air/WBM (gas storage)/OBM  
Barite, Lime, CaCL, base oil, Gilsonite, Asphalt, clay, Emulsifier, sulfatone, safevert FLG, safevert WA

Date permit issued 05/03/2021 Date drilling commenced 5/12/2021 Date drilling ceased 3/3/2022  
Date completion activities began 7/15/2022 Date completion activities ceased 8/12/2022  
Verbal plugging (Y/N) \_\_\_\_\_ Date permission granted \_\_\_\_\_ Granted by \_\_\_\_\_

Please note: Operator is required to submit a plugging application within 5 days of verbal permission to plug

Freshwater depth(s) ft Not observed Open mine(s) (Y/N) depths N  
Salt water depth(s) ft Not observed Void(s) encountered (Y/N) depths N  
Coal depth(s) ft 452,468,530,600,900,1025,1107 Cavern(s) encountered (Y/N) depths N  
Is coal being mined in area (Y/N) No

**APPROVED**

Reviewed by:  
*Kenneth Reynolds*  
**05/17/2024**  
5-17-24

API 47-041 - 05723 Farm name Evans Well number Evans 1213 S7H

| CASING STRINGS            | Hole Size | Casing Size | Depth | New or Used | Grade wt/ft       | Basket Depth(s) | Did cement circulate (Y/N)<br>* Provide details below* |
|---------------------------|-----------|-------------|-------|-------------|-------------------|-----------------|--|
| Conductor                 | 30"       | 30"         | 120   | New         | 157 lb/ft LS      |                 | Drilled in   |
| Surface                   | 26"       | 20"         | 1137  | New         | 94 lbs/ft J-55    |                 | Yes, 80 bbl to surface                                 |
| Coal                      |           |             |       |             |                   |                 |  |
| Intermediate 1            | 17.5"     | 13.375"     | 2063  | New         | 68 lbs/ft J55     |                 | Yes, 150 bbl to surface                                |
| Intermediate 2            | 12.25     | 9.625"      | 4914  | New         | 40 lbs/ft N80     |                 | Yes, 59 bbl to surface                                 |
| Intermediate 3            |           |             |       |             |                   |                 |  |
| Production                | 8.5       | 5.5         | 26034 | New         | 23 lbs/ft P-110HP |                 | Yes, 150 bbl to surface                                |
| Tubing                    |           |             |       |             |                   |                 |  |
| Packer type and depth set |           |             |       |             |                   |                 |  |

Comment Details \_\_\_\_\_

| CEMENT DATA    | Class/Type of Cement | Number of Sacks | Slurry wt (ppg) | Yield (ft <sup>3</sup> /sks) | Volume (ft <sup>3</sup> ) | Cement Top (MD) | WOC (hrs) |
|----------------|----------------------|-----------------|-----------------|------------------------------|---------------------------|-----------------|-----------|
| Conductor      |                      |                 |                 |                              |                           |                 |           |
| Surface        | Class A              | 2020            | 15.6            | 1.18                         | 2383                      | Surface         | 8         |
| Coal           |                      |                 |                 |                              |                           |                 |           |
| Intermediate 1 | Class A              | 1918/508        | 16.0/16.4       | 1.16/1.12                    | 2225/569                  | Surface         | 24        |
| Intermediate 2 | Class A              | 569/190         | 10.5/15.2       | 2.2/1.25                     | 1252/237                  | Surface         | 8         |
| Intermediate 3 |                      |                 |                 |                              |                           |                 |           |
| Production     | Class A              | 309/306/3934    | 13.5/13.5/14.8  | 1.82/1.67/1.34               | 562/511/5271              | Surface         | 8         |
| Tubing         |                      |                 |                 |                              |                           |                 |           |

Drillers TD (ft) <sup>26063</sup> \_\_\_\_\_ Loggers TD (ft) \_\_\_\_\_

Deepest formation penetrated Marcellus Plug back to (ft) \_\_\_\_\_

Plug back procedure \_\_\_\_\_

Kick off depth (ft) \_\_\_\_\_

Check all wireline logs run  caliper  density  deviated/directional  induction  
 neutron  resistivity  gamma ray  temperature  sonic

Well cored  Yes  No Conventional Sidewall Were cuttings collected  Yes  No

DESCRIBE THE CENTRALIZER PLACEMENT USED FOR EACH CASING STRING \_\_\_\_\_

20" casing: centralizer every 3 joints to surface

13.375" casing: Bow spring centralizer on every joint

9.625" casing: Bow spring on first 2 joints then every 3rd joint to 100' from surface

5.5" casing: Centralizer run every 3 joints to top of curve (KOP) then centralizers placed every 5 joints to surface

RECEIVED  
Office of Oil and Gas

WAS WELL COMPLETED AS SHOT HOLE  Yes  No DETAILS \_\_\_\_\_

FEB 26 2024

WAS WELL COMPLETED OPEN HOLE?  Yes  No DETAILS \_\_\_\_\_

WV Department of  
Environmental Protection

WERE TRACERS USED  Yes  No TYPE OF TRACER(S) USED \_\_\_\_\_

05/17/2024





HG Energy II Appalachia, LLC

Evans 1213 S-7H

Lithology Record

| Formation            | Top MD | Top TVD | Base MD | Base TVD |
|----------------------|--------|---------|---------|----------|
| Coal                 | 452    | 452     | 455     | 455      |
| Coal                 | 468    | 468     | 471     | 471      |
| Coal                 | 530    | 530     | 533     | 533      |
| Coal                 | 600    | 600     | 603     | 603      |
| Gas Sand             | 680    | 680     | 840     | 840      |
| 1st salt sand        | 888    | 888     | 933     | 933      |
| Coal                 | 900    | 900     | 902     | 902      |
| Coal                 | 1025   | 1025    | 1028    | 1028     |
| 2nd salt sand        | 1086   | 1086    | 1139    | 1139     |
| Coal                 | 1107   | 1107    | 1109    | 1109     |
| Surface Casing       | 1178   | drill   | 1137    | set      |
| 3rd salt sand        | 1233   | 1233    | 1286    | 1286     |
| Little Lime          | 1501   | 1501    | 1521    | 1521     |
| Greenbrier Big Lime  | 1551   | 1551    | 1621    | 1621     |
| T - Pocono Big Injun | 1621   | 1621    | 1719    | 1719     |
| Gantz                | 1891   | 1891    | 1950    | 1950     |
| Fifty foot Sand      | 2002   | 2002    | 2020    | 2020     |
| Casing depth         | 2087   | drill   | 2063    | set      |
| Thirty foot Sand     | 2094   | 2094    | 2132    | 2132     |
| Gordon Stray sand    | 2147   | 2147    | 2183    | 2183     |
| Gordon sand          | 2183   | 2183    | 2259    | 2259     |
| 5th sand             | 2394   | 2394    | 2435    | 2435     |
| Bayard sand          | 2477   | 2477    | 2504    | 2504     |
| Warren               | 2796   | 2796    | 2829    | 2828     |
| Speechley            | 3101   | 3098    | 3120    | 3116     |
| Balltown             | 3320   | 3310    | 3420    | 3406     |
| Benson               | 4556   | 4405    | 4593    | 4436     |
| 9 5-/8" casing depth | 4950   | drill   | 4914    | set      |
| Rhinestreet          | 6357   | 5961    | 6640    | 6196     |
| Cashaqua             | 6640   | 6196    | 6862    | 6371     |
| Middlesex            | 6862   | 6371    | 7009    | 6471     |
| West River           | 7009   | 6471    | 7191    | 6570     |
| Burket               | 7191   | 6570    | 7228    | 6587     |
| Tully                | 7228   | 6587    | 7427    | 6664     |
| Hamilton             | 7427   | 6664    | 7621    | 6719     |
| Marcellus shale      | 7621   | 6719    | 26063   | 6889     |

RECEIVED  
Office of Oil and Gas

FEB 26 2024

WV Department of  
Environmental Protection

05/17/2024

**HG Energy II Appalachia, LLC**

**Evans 1213 S-7H**

**Perforation Record**

| Stage #  | Date      | Perforation From Depth | Perforation to Depth | Number of Perforations | Formation |
|----------|-----------|------------------------|----------------------|------------------------|-----------|
| Sleeve/1 | 7/16/2022 | 25982                  | 25956                | 2                      | Marcellus |
| 2        | 7/17/2022 | 25922                  | 25754                | 32                     | Marcellus |
| 3        | 7/17/2022 | 25726                  | 25558                | 32                     | Marcellus |
| 4        | 7/18/2022 | 25530                  | 25362                | 32                     | Marcellus |
| 5        | 7/18/2022 | 25334                  | 25166                | 32                     | Marcellus |
| 6        | 7/18/2022 | 25138                  | 24970                | 32                     | Marcellus |
| 7        | 7/19/2022 | 24942                  | 24774                | 32                     | Marcellus |
| 8.1      | 7/19/2022 | 24942                  | 24774                | N/A                    | Marcellus |
| 8        | 7/19/2022 | 24746                  | 24578                | 32                     | Marcellus |
| 9        | 7/20/2022 | 24550                  | 24382                | 32                     | Marcellus |
| 10       | 7/20/2022 | 24354                  | 24186                | 32                     | Marcellus |
| 11       | 7/20/2022 | 24158                  | 23990                | 32                     | Marcellus |
| 12       | 7/20/2022 | 23962                  | 23794                | 32                     | Marcellus |
| 13       | 7/21/2022 | 23766                  | 23598                | 32                     | Marcellus |
| 14       | 7/21/2022 | 23570                  | 23402                | 32                     | Marcellus |
| 15       | 7/21/2022 | 23374                  | 23206                | 32                     | Marcellus |
| 16       | 7/21/2022 | 23178                  | 23010                | 32                     | Marcellus |
| 17       | 7/22/2022 | 22982                  | 22814                | 32                     | Marcellus |
| 18       | 7/22/2022 | 22786                  | 22618                | 32                     | Marcellus |
| 19       | 7/22/2022 | 22590                  | 22422                | 32                     | Marcellus |
| 20       | 7/22/2022 | 22394                  | 22226                | 32                     | Marcellus |
| 21       | 7/22/2022 | 22198                  | 22030                | 32                     | Marcellus |
| 22       | 7/23/2022 | 22002                  | 21834                | 32                     | Marcellus |
| 23       | 7/23/2022 | 21806                  | 21638                | 32                     | Marcellus |
| 24       | 7/23/2022 | 21610                  | 21442                | 32                     | Marcellus |
| 25       | 7/23/2022 | 21414                  | 21246                | 32                     | Marcellus |
| 26       | 7/24/2022 | 21218                  | 21050                | 32                     | Marcellus |
| 27       | 7/24/2022 | 21022                  | 20854                | 32                     | Marcellus |
| 28       | 7/24/2022 | 20826                  | 20658                | 32                     | Marcellus |
| 29       | 7/24/2022 | 20630                  | 20462                | 32                     | Marcellus |
| 30       | 7/25/2022 | 20434                  | 20266                | 32                     | Marcellus |
| 31       | 7/25/2022 | 20238                  | 20070                | 32                     | Marcellus |
| 32       | 7/26/2022 | 20042                  | 19874                | 32                     | Marcellus |
| 33       | 7/26/2022 | 19846                  | 19678                | 32                     | Marcellus |
| 34       | 7/26/2022 | 19650                  | 19482                | 32                     | Marcellus |
| 35       | 7/26/2022 | 19454                  | 19286                | 32                     | Marcellus |
| 36       | 7/27/2022 | 19258                  | 19090                | 32                     | Marcellus |
| 37       | 7/27/2022 | 19062                  | 18894                | 32                     | Marcellus |
| 38       | 7/27/2022 | 18866                  | 18698                | 32                     | Marcellus |
| 39       | 7/27/2022 | 18670                  | 18502                | 32                     | Marcellus |
| 40       | 7/28/2022 | 18474                  | 18306                | 32                     | Marcellus |
| 41       | 7/28/2022 | 18278                  | 18110                | 32                     | Marcellus |
| 42       | 7/28/2022 | 18082                  | 17914                | 32                     | Marcellus |
| 43       | 7/28/2022 | 17886                  | 17718                | 32                     | Marcellus |
| 44       | 7/28/2022 | 17690                  | 17522                | 32                     | Marcellus |
| 45       | 7/29/2022 | 17494                  | 17326                | 32                     | Marcellus |
| 46       | 7/29/2022 | 17298                  | 17130                | 32                     | Marcellus |
| 47       | 7/29/2022 | 17102                  | 16934                | 32                     | Marcellus |
| 48       | 7/29/2022 | 16906                  | 16738                | 32                     | Marcellus |
| 49       | 7/29/2022 | 16710                  | 16542                | 32                     | Marcellus |
| 50       | 7/30/2022 | 16514                  | 16346                | 32                     | Marcellus |
| 51       | 7/30/2022 | 16318                  | 16150                | 32                     | Marcellus |
| 52       | 7/30/2022 | 16122                  | 15954                | 32                     | Marcellus |
| 53       | 7/30/2022 | 15926                  | 15758                | 32                     | Marcellus |
| 54       | 8/1/2022  | 15730                  | 15562                | 32                     | Marcellus |

RECEIVED  
Office of Oil and Gas  
FEB 26 2024  
WV Department of  
Environmental Protection

05/17/2024

|     |           |       |       |    |           |
|-----|-----------|-------|-------|----|-----------|
| 55  | 8/2/2022  | 15534 | 15366 | 32 | Marcellus |
| 56  | 8/2/2022  | 15338 | 15170 | 32 | Marcellus |
| 57  | 8/2/2022  | 15142 | 14974 | 32 | Marcellus |
| 58  | 8/2/2022  | 14946 | 14778 | 32 | Marcellus |
| 59  | 8/3/2022  | 14750 | 14582 | 32 | Marcellus |
| 60  | 8/3/2022  | 14554 | 14386 | 32 | Marcellus |
| 61  | 8/3/2022  | 14358 | 14190 | 32 | Marcellus |
| 62  | 8/3/2022  | 14162 | 13994 | 32 | Marcellus |
| 63  | 8/4/2022  | 13966 | 13798 | 32 | Marcellus |
| 64  | 8/4/2022  | 13770 | 13602 | 32 | Marcellus |
| 65  | 8/4/2022  | 13574 | 13406 | 32 | Marcellus |
| 66  | 8/4/2022  | 13378 | 13210 | 32 | Marcellus |
| 67  | 8/5/2022  | 13182 | 13014 | 32 | Marcellus |
| 68  | 8/5/2022  | 12986 | 12818 | 32 | Marcellus |
| 69  | 8/6/2022  | 12790 | 12622 | 32 | Marcellus |
| 70  | 8/6/2022  | 12594 | 12426 | 32 | Marcellus |
| 71  | 8/6/2022  | 12398 | 12230 | 32 | Marcellus |
| 72  | 8/6/2022  | 12202 | 12034 | 32 | Marcellus |
| 73  | 8/7/2022  | 12006 | 11838 | 32 | Marcellus |
| 74  | 8/7/2022  | 11810 | 11642 | 32 | Marcellus |
| 75  | 8/7/2022  | 11614 | 11446 | 32 | Marcellus |
| 76  | 8/7/2022  | 11418 | 11250 | 32 | Marcellus |
| 77  | 8/7/2022  | 11222 | 11054 | 32 | Marcellus |
| 78  | 8/8/2022  | 11026 | 10858 | 32 | Marcellus |
| 79  | 8/8/2022  | 10830 | 10662 | 32 | Marcellus |
| 80  | 8/8/2022  | 10634 | 10466 | 32 | Marcellus |
| 81  | 8/8/2022  | 10438 | 10270 | 32 | Marcellus |
| 82  | 8/8/2022  | 10241 | 10073 | 32 | Marcellus |
| 83  | 8/8/2022  | 10043 | 9875  | 32 | Marcellus |
| 84  | 8/8/2022  | 9845  | 9677  | 32 | Marcellus |
| 85A | 8/9/2022  | 9647  | 9479  | 32 | Marcellus |
| 85B | 8/9/2022  | 9647  | 9449  | 60 | Marcellus |
| 86  | 8/9/2022  | 9420  | 9266  | 32 | Marcellus |
| 87  | 8/9/2022  | 9237  | 9083  | 32 | Marcellus |
| 88  | 8/9/2022  | 9053  | 8885  | 32 | Marcellus |
| 89  | 8/10/2022 | 8855  | 8687  | 32 | Marcellus |
| 90  | 8/10/2022 | 8657  | 8489  | 32 | Marcellus |
| 91  | 8/10/2022 | 8459  | 8291  | 32 | Marcellus |
| 92  | 8/10/2022 | 8261  | 8093  | 32 | Marcellus |
| 93  | 8/10/2022 | 8063  | 7895  | 32 | Marcellus |
| 94  | 8/10/2022 | 7865  | 7697  | 32 | Marcellus |

RECEIVED  
Office of Oil and Gas  
FEB 26 2024  
WV Department of  
Environmental Protection

05/17/2024

**HG Energy II Appalachia, LLC**  
**Evans 1213 S-7H**  
**Stimulation Summary**

| Stage #  | Date      | Ave Pump Rate (BPM) | Ave Treatment Press (PSI) | Max Breakdown Pressure (PSI) | ISIP (PSI) | Proppant (LBS) | Water (BBLs) |
|----------|-----------|---------------------|---------------------------|------------------------------|------------|----------------|--------------|
| Sleeve/1 | 7/16/2022 | 78.2                | 9818                      | 12285                        | 4273       | 242980         | 7,504        |
| 2        | 7/17/2022 | 84.0                | 10,182                    | 6,487                        | 4,754      | 700000         | 14,817       |
| 3        | 7/17/2022 | 86.2                | 9,911                     | 6,695                        | 5,486      | 700000         | 13,408       |
| 4        | 7/18/2022 | 83.5                | 10,209                    | 6,486                        | 4,954      | 574940         | 11,857       |
| 5        | 7/18/2022 | 82.3                | 9,882                     | 6,055                        | 4,704      | 705000         | 12,800       |
| 6        | 7/18/2022 | 81.0                | 9,527                     | 6,700                        | 4,612      | 705000         | 11,531       |
| 7        | 7/19/2022 | 85.8                | 10,281                    | 6,497                        | 4,677      | 705000         | 11,661       |
| 8.1      | 7/19/2022 | 59.5                | 9,096                     | N/A                          | 4,496      | 260600         | 7,613        |
| 8        | 7/19/2022 | 87.8                | 10,173                    | 6,643                        | 5,197      | 705000         | 10,218       |
| 9        | 7/20/2022 | 84.9                | 10,103                    | 6,310                        | 5,185      | 705500         | 10,052       |
| 10       | 7/20/2022 | 79.2                | 10,068                    | 7,101                        | 5,173      | 644310         | 9,529        |
| 11       | 7/20/2022 | 86.5                | 10,237                    | 6,509                        | 5,352      | 705400         | 9,797        |
| 12       | 7/20/2022 | 81.5                | 10,176                    | 6,904                        | 5,084      | 657100         | 9,723        |
| 13       | 7/21/2022 | 85.0                | 9,968                     | 6,126                        | 5,056      | 705500         | 9,432        |
| 14       | 7/21/2022 | 85.1                | 10,229                    | 5,875                        | 5,010      | 628690         | 9,521        |
| 15       | 7/21/2022 | 81.0                | 10,177                    | 6,647                        | 5,378      | 705500         | 9,979        |
| 16       | 7/21/2022 | 82.7                | 10,267                    | 5,991                        | 5,488      | 705500         | 10,818       |
| 17       | 7/22/2022 | 88.0                | 10,175                    | 5,933                        | 5,188      | 705500         | 9,734        |
| 18       | 7/22/2022 | 79.0                | 10,010                    | 6,867                        | 5,490      | 690100         | 9,761        |
| 19       | 7/22/2022 | 84.5                | 10,279                    | 6,583                        | 4,957      | 690050         | 9,701        |
| 20       | 7/22/2022 | 91.8                | 10,364                    | 5,997                        | 5,642      | 690000         | 9,709        |
| 21       | 7/22/2022 | 88.0                | 10,164                    | 5,588                        | 5,320      | 690000         | 9,858        |
| 22       | 7/23/2022 | 88.0                | 9,938                     | 6,543                        | 5,135      | 690500         | 9,492        |
| 23       | 7/23/2022 | 93.0                | 10,194                    | 6,426                        | 5,196      | 691700         | 9,696        |
| 24       | 7/23/2022 | 90.6                | 10,289                    | 6,264                        | 5,216      | 690000         | 9,505        |
| 25       | 7/23/2022 | 92.8                | 10,188                    | 5,982                        | 5,350      | 690000         | 11,214       |
| 26       | 7/24/2022 | 85.0                | 10,065                    | 6,142                        | 5,015      | 690000         | 11,965       |
| 27       | 7/24/2022 | 85.2                | 10,182                    | 6,124                        | 5,087      | 690000         | 9,870        |
| 28       | 7/24/2022 | 86.0                | 10,140                    | 5,802                        | 5,423      | 690000         | 9,909        |
| 29       | 7/24/2022 | 84.0                | 10,060                    | 6,531                        | 5,927      | 690000         | 9,749        |
| 30       | 7/25/2022 | 85.2                | 9,975                     | 6,300                        | 5,261      | 690000         | 9,737        |
| 31       | 7/25/2022 | 87.9                | 10,214                    | 5,951                        | 5,491      | 690080         | 9,815        |
| 32       | 7/26/2022 | 89.0                | 10,179                    | 5,857                        | 5,289      | 694400         | 9,902        |
| 33       | 7/26/2022 | 95.0                | 10,207                    | 6,456                        | 5,805      | 690000         | 9,839        |
| 34       | 7/26/2022 | 92.3                | 10,196                    | 6,168                        | 4,679      | 690000         | 9,803        |
| 35       | 7/26/2022 | 94.1                | 10,338                    | 6,282                        | 6,256      | 690130         | 9,782        |
| 36       | 7/27/2022 | 87.0                | 9,990                     | 6,055                        | 5,037      | 690300         | 9,764        |
| 37       | 7/27/2022 | 98.0                | 10,129                    | 5,693                        | 4,886      | 653300         | 9,506        |
| 38       | 7/27/2022 | 98.1                | 10,039                    | 5,973                        | 5,175      | 690000         | 10,294       |
| 39       | 7/27/2022 | 100.3               | 10,158                    | 5,973                        | 4,693      | 690000         | 9,697        |
| 40       | 7/28/2022 | 98.0                | 9,852                     | 6,387                        | 5,063      | 690000         | 9,677        |
| 41       | 7/28/2022 | 99.0                | 10,139                    | 6,044                        | 4,668      | 690000         | 11,117       |
| 42       | 7/28/2022 | 93.0                | 10,006                    | 6,200                        | 5,147      | 644700         | 10,749       |
| 43       | 7/28/2022 | 98.0                | 10,192                    | 6,549                        | 5,652      | 680000         | 10,894       |
| 44       | 7/28/2022 | 97.0                | 10,151                    | 6,857                        | 5,042      | 680000         | 9,804        |
| 45       | 7/29/2022 | 96.0                | 9,966                     | 7,223                        | 5,501      | 680000         | 9,654        |
| 46       | 7/29/2022 | 95.0                | 9,667                     | 6,235                        | 5,457      | 680000         | 10,789       |
| 47       | 7/29/2022 | 99.0                | 9,983                     | 6,288                        | 4,756      | 680010         | 9,845        |
| 48       | 7/29/2022 | 100.0               | 10,105                    | 6,701                        | 5,746      | 680040         | 9,850        |
| 49       | 7/29/2022 | 102.0               | 10,184                    | 4,602                        | 5,500      | 680000         | 9,777        |
| 50       | 7/30/2022 | 100.0               | 10,122                    | 7,265                        | 5,248      | 680000         | 9,727        |
| 51       | 7/30/2022 | 99.0                | 9,981                     | 5,910                        | 5,286      | 703600         | 9,717        |
| 52       | 7/30/2022 | 94.6                | 9,462                     | 6,945                        | 4,916      | 680540         | 9,704        |
| 53       | 7/30/2022 | 99.0                | 10,189                    | 6,596                        | 5,800      | 614020         | 9,169        |

05/17/2024



|     |           |       |        |       |       |        |        |
|-----|-----------|-------|--------|-------|-------|--------|--------|
| 54  | 8/1/2022  | 84.0  | 10,023 | 7,211 | 5,247 | 661000 | 10,156 |
| 55  | 8/2/2022  | 96.0  | 10,264 | 6,345 | 5,610 | 681000 | 9,659  |
| 56  | 8/2/2022  | 99.0  | 10,201 | 6,799 | 9,522 | 669900 | 9,569  |
| 57  | 8/2/2022  | 98.4  | 9,938  | 6,608 | 4,852 | 680000 | 9,463  |
| 58  | 8/2/2022  | 97.0  | 9,840  | 6,433 | 4,793 | 680100 | 9,615  |
| 59  | 8/3/2022  | 98.0  | 10,200 | 6,583 | 5,084 | 680000 | 9,586  |
| 60  | 8/3/2022  | 99.0  | 10,182 | 5,800 | 5,196 | 680000 | 9,601  |
| 61  | 8/3/2022  | 101.0 | 10,163 | 6,621 | 6,112 | 680000 | 10,046 |
| 62  | 8/3/2022  | 97.0  | 9,974  | 6,270 | 4,358 | 474400 | 8,704  |
| 63  | 8/4/2022  | 101.0 | 10,073 | 5,973 | 5,525 | 680000 | 9,543  |
| 64  | 8/4/2022  | 99.0  | 10,070 | 6,800 | 5,764 | 680000 | 9,349  |
| 65  | 8/4/2022  | 99.0  | 9,619  | 5,900 | 5,250 | 680000 | 9,482  |
| 66  | 8/4/2022  | 99.0  | 9,465  | 6,240 | 5,101 | 680000 | 7,934  |
| 67  | 8/5/2022  | 100.0 | 9,811  | 6,419 | 4,310 | 680000 | 9,536  |
| 68  | 8/5/2022  | 87.0  | 9,524  | 6,712 | 4,589 | 680000 | 11,501 |
| 69  | 8/6/2022  | 97.0  | 10,102 | 5,968 | 5,302 | 680000 | 10,492 |
| 70  | 8/6/2022  | 105.0 | 10,155 | 6,407 | 5,106 | 680000 | 9,318  |
| 71  | 8/6/2022  | 100.0 | 10,008 | 6,546 | 4,561 | 680000 | 9,651  |
| 72  | 8/6/2022  | 101.0 | 9,868  | 6,885 | 5,223 | 680000 | 9,687  |
| 73  | 8/7/2022  | 93.0  | 9,791  | 6,746 | 4,681 | 680000 | 10,752 |
| 74  | 8/7/2022  | 101.0 | 9,672  | 3,178 | 5,719 | 680000 | 9,656  |
| 75  | 8/7/2022  | 104.0 | 9,425  | 4,020 | 5,649 | 680000 | 9,547  |
| 76  | 8/7/2022  | 93.0  | 9,201  | 6,420 | 4,424 | 680000 | 9,201  |
| 77  | 8/7/2022  | 100.0 | 9,702  | 6,589 | 4,108 | 680000 | 9,636  |
| 78  | 8/8/2022  | 97.0  | 9,286  | 2,390 | 6,116 | 680000 | 9,444  |
| 79  | 8/8/2022  | 100.0 | 9,998  | 5,566 | 5,160 | 680000 | 9,432  |
| 80  | 8/8/2022  | 101.0 | 9,961  | 5,799 | 5,412 | 680000 | 9,345  |
| 81  | 8/8/2022  | 101.0 | 9,789  | 6,049 | 5,524 | 680000 | 9,334  |
| 82  | 8/8/2022  | 95.0  | 9,212  | 5,625 | 4,651 | 680000 | 9,538  |
| 83  | 8/8/2022  | 95.0  | 8,979  | 6,090 | 4,401 | 680000 | 9,649  |
| 84  | 8/8/2022  | 96.0  | 9,310  | 6,642 | 4,015 | 680000 | 9,870  |
| 85A | 8/9/2022  | 77.0  | 9,931  | 6,165 | 4,993 | 11000  | 3,357  |
| 85B | 8/9/2022  | 106.0 | 9,198  | 6,142 | 5,322 | 669000 | 8,876  |
| 86  | 8/9/2022  | 108.0 | 9156   | 6049  | 5522  | 680600 | 9254   |
| 87  | 8/9/2022  | 107.0 | 8993   | 7320  | 5149  | 680000 | 9811   |
| 88  | 8/9/2022  | 106.0 | 8864   | 6810  | 4887  | 680000 | 9432   |
| 89  | 8/10/2022 | 109.0 | 9306   | 6816  | 5230  | 680000 | 9272   |
| 90  | 8/10/2022 | 110.0 | 9024   | 7146  | 4915  | 680000 | 9302   |
| 91  | 8/10/2022 | 101.0 | 9444   | 7548  | 5441  | 680000 | 9525   |
| 92  | 8/10/2022 | 109.0 | 8659   | 7234  | 5670  | 680000 | 9412   |
| 93  | 8/10/2022 | 108.0 | 8904   | 6253  | 4976  | 680000 | 9466   |
| 94  | 8/10/2022 | 108.0 | 8746   | 6920  | 5100  | 680000 | 9648   |

RECEIVED  
Office of Oil and Gas,  
FEB 26 2024  
WV Department of  
Environmental Protection

05/17/2024



8,069' to Bottom Hole  
4,278' to Top Hole

TOP LATITUDE 39 - 07 - 30  
BTM LATITUDE 39 - 05 - 00

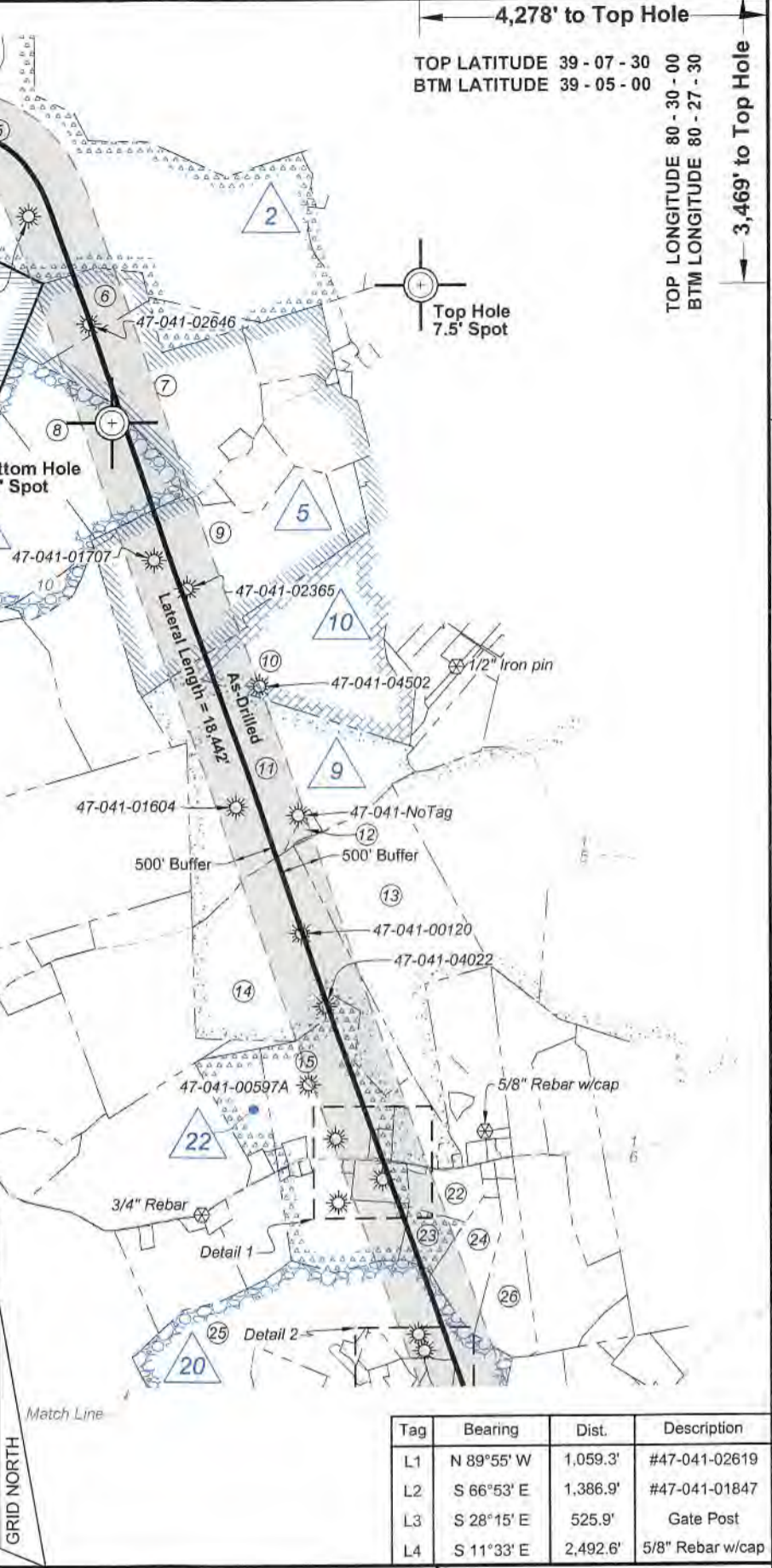
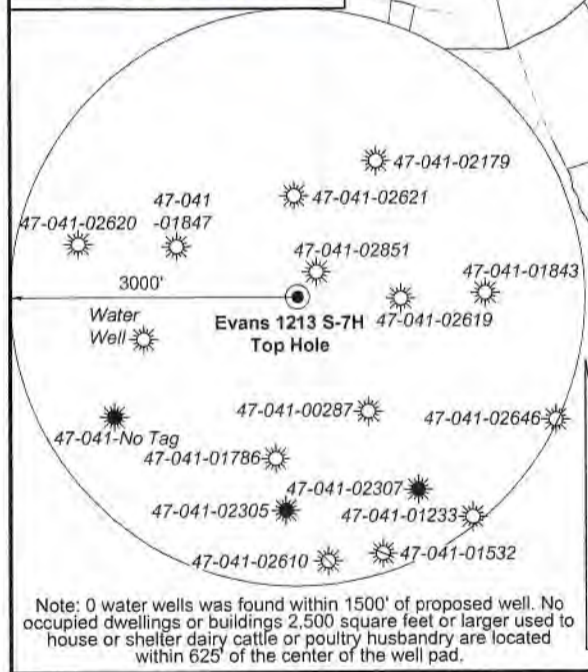
TOP LONGITUDE 80 - 30 - 00  
BTM LONGITUDE 80 - 27 - 30  
3,469' to Top Hole  
5,115' to Bottom Hole

HG Energy II Appalachia, LLC  
Well No. Evans 1213 S-7H  
As-Drilled  
Page 1 of 3



I, the undersigned, hereby certify that this plat is correct to the best of my knowledge and belief and shows all the information required by law and the rules issued and prescribed by the Department of Environmental Protection.

*Kevin S. James*  
Kevin S. James, P.S. 2305



| Tag | Bearing    | Dist.    | Description      |
|-----|------------|----------|------------------|
| L1  | N 89°55' W | 1,059.3' | #47-041-02619    |
| L2  | S 66°53' E | 1,386.9' | #47-041-01847    |
| L3  | S 28°15' E | 525.9'   | Gate Post        |
| L4  | S 11°33' E | 2,492.6' | 5/8" Rebar w/cap |

FILE NO: 235-36-12-19  
DRAWING NO: Evans 1213 S-7H Well Plat  
SCALE: 1" = 2000'  
MINIMUM DEGREE OF ACCURACY: Submeter  
PROVEN SOURCE OF ELEVATION: CORS, Bridgeport, WV

**STATE OF WEST VIRGINIA**  
DEPARTMENT OF ENVIRONMENTAL PROTECTION  
**OIL AND GAS DIVISION**

DATE: November 8 20 22  
OPERATOR'S WELL NO. Evans 1213 S-7H  
API WELL NO  
47 - 041 - 05723  
STATE COUNTY PERMIT

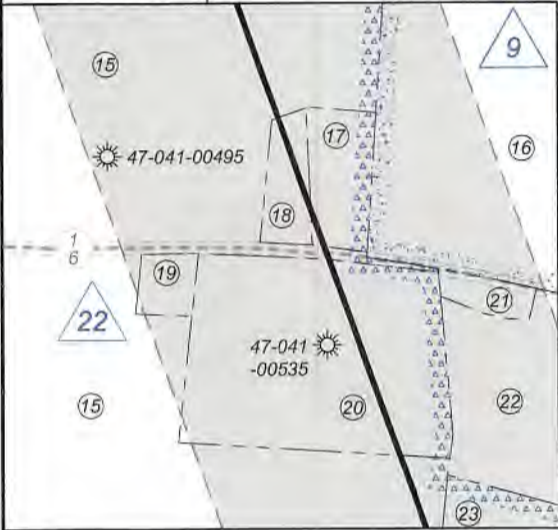
WELL TYPE:  OIL  GAS  LIQUID INJECTION  WASTE DISPOSAL  
(IF GAS) PRODUCTION:  STORAGE  DEEP  SHALLOW

LOCATION: ELEVATION: 1,227.6' WATERSHED: Middle West Fork Creek QUADRANGLE: Top: Camden  
DISTRICT: Freemans Creek COUNTY: Wayne  
SURFACE OWNER: Suzanne L. Evans & James M., III ACREAGE: 294.00  
ROYALTY OWNER: Mary C. Burnside, et al, et al LEASE NO: ACREAGE: 294.00  
PROPOSED WORK:  DRILL  CONVERT  DRILL DEEPER  FRACTURE OR STIMULATE  PLUG OFF OLD FORMATION  
 PERFORATE NEW FORMATION  OTHER PHYSICAL CHANGE IN WELL (SPECIFY) As-Drilled 6,889' TVD  
 PLUG AND ABANDON  CLEAN OUT AND REPLUG TARGET FORMATION: Marcellus Shale ESTIMATED DEPTH: 26,063' MD

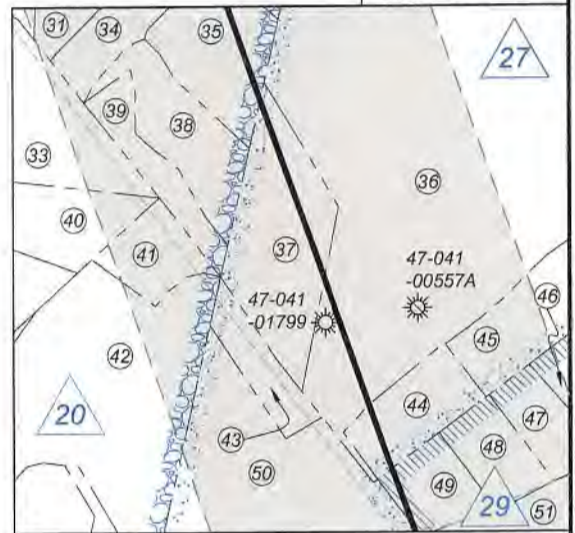
WELL OPERATOR: HG Energy II Appalachia, LLC DESIGNATED AGENT: Diane C. White  
ADDRESS: 5260 Dupont Road ADDRESS: 5260 Dupont Road  
Parkersburg, WV 26101 Parkersburg, WV 26101



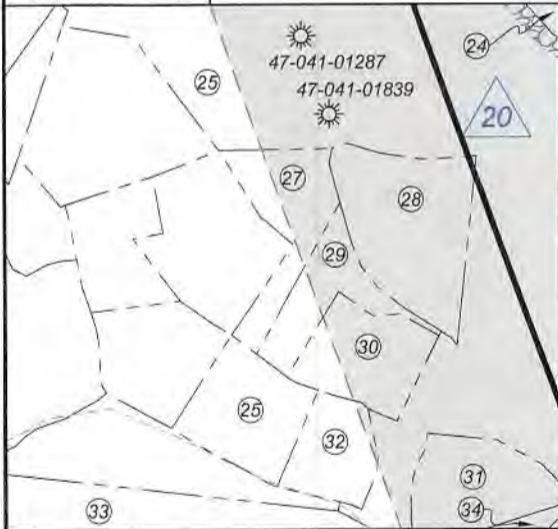
Detail 1 - 1"=500'



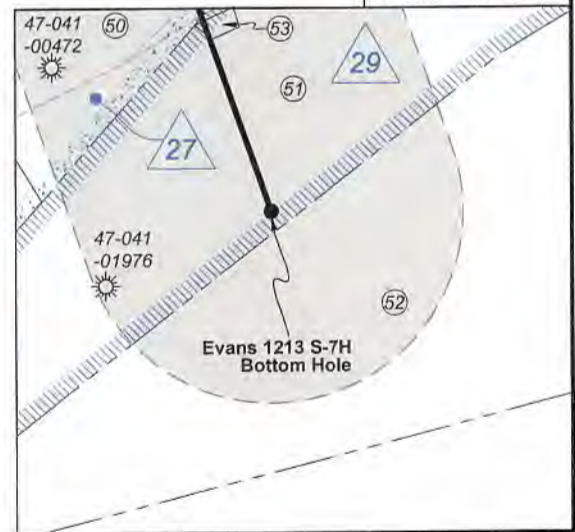
Detail 3 - 1"=500'



Detail 2 - 1"=500'



Detail 4 - 1"=500'



FILE NO: 235-36-12-19  
DRAWING NO: Evans 1213 S-7H Well Plat  
SCALE: 1" = 2000'  
MINIMUM DEGREE OF ACCURACY:  
Submeter  
PROVEN SOURCE OF ELEVATION:  
CORS, Bridgeport, WV

**STATE OF WEST VIRGINIA**  
DEPARTMENT OF ENVIRONMENTAL PROTECTION  
**OIL AND GAS DIVISION**

DATE: November 8 2022  
OPERATOR'S WELL NO. Evans 1213 S-7H  
API WELL NO  
47 - 041 - 05723  
STATE COUNTY PERMIT

WELL TYPE:  OIL  GAS  LIQUID INJECTION  WASTE DISPOSAL  
(IF GAS) PRODUCTION:  STORAGE  DEEP  SHALLOW

LOCATION: ELEVATION: 1,227.6' WATERSHED: Middle West Fork Creek

DISTRICT: Freemans Creek

SURFACE OWNER: Suzanne L. Evans & James M., III

ROYALTY OWNER: Mary C. Burnside, et al, et al

LEASE NO: \_\_\_\_\_ ACREAGE: 294.00

PROPOSED WORK:  DRILL  CONVERT  DRILL DEEPER  FRACTURE OR STIMULATE  PLUG OFF OLD FORMATION  
 PERFORATE NEW FORMATION  OTHER PHYSICAL CHANGE IN WELL (SPECIFY) As-Drilled

PLUG AND ABANDON  CLEAN OUT AND REPLUG TARGET FORMATION: Marcellus Shale ESTIMATED DEPTH: 26,063' MD

Btm: Weston  
QUADRANGLE: Top: Camden  
COUNTY: Lewis  
ACREAGE: 294.00

05/17/2024

WELL OPERATOR: HG Energy II Appalachia, LLC

DESIGNATED AGENT: Diane C. White

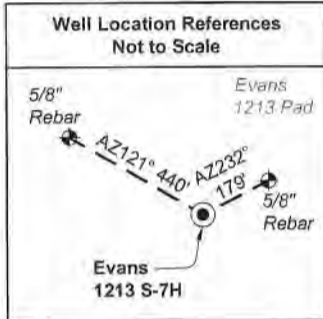
ADDRESS: 5260 Dupont Road  
Parkersburg, WV 26101

ADDRESS: 5260 Dupont Road  
Parkersburg, WV 26101

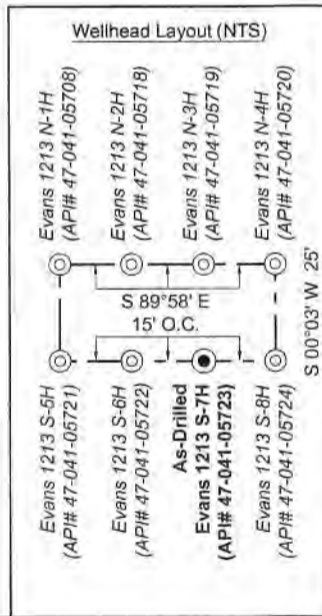


| ID | Lease                       |
|----|-----------------------------|
| 2  | J.S. Norris                 |
| 4  | Mary C. Burnside, et vir    |
| 5  | Abram Gaston                |
| 7  | L.E. & Henrietta Gall       |
| 9  | John W. Norris              |
| 10 | Margaret F. Shutts          |
| 20 | T.Lee & S.V. Hudkins        |
| 22 | S.H. Bailey, widower, et al |
| 27 | D.B. & Edna Bailey, et al   |
| 29 | Lydia L. Bailey, et al      |

**Notes:**  
Well No. Evans 1213 S-7H  
UTM NAD 1983 (USSF)  
Top Hole Coordinates  
N: 14,205,067.26'  
E: 1,778,006.97'  
Landing Point Coordinates  
N: 14,205,654.76'  
E: 1,779,975.85'  
Bottom Hole Coordinates  
N: 14,188,295.11'  
E: 1,786,134.27'



**Notes:** Well No. Evans 1213 S-7H  
West Virginia Coordinate System of 1927, North Zone  
based upon Differential GPS Measurements.  
Top Hole coordinates Bottom Hole coordinates  
Latitude: 39°06'55.71" Latitude: 39°04'09.43"  
Longitude: 80°30'54.29" Longitude: 80°29'12.35"  
UTM Zone 17, NAD 1983  
Top Hole Coordinates Bottom Hole Coordinates  
N: 4,329,713.160m N: 4,324,600.999m  
E: 541,937.608m E: 544,414.814m  
Plat orientation and corner and well references are  
based upon the grid north meridian, Well location  
references are based upon the magnetic meridian.



**Legend**

- Proposed gas well
- Well Reference, as noted
- Monument, as noted
- Existing Well, as noted
- Existing Plugged Well, as noted
- Digitized Well, as noted
- Creek or Drain
- Existing Road
- Surface boundary (approx.)
- Adjoiner surface tracts (approx.)

| No. | TM / Par   | Owner                                      | Bk / Pg   | Ac.    |
|-----|------------|--|-----------|--------|
| 1   | 6C / 4     | Suzanne L. & James M. Evans, III           | 657 / 228 | 294.00 |
| 2   | 6C / 3.2   | John K. Burnside & Bertha F. Benedum       | 666 / 44  | 115.00 |
| 3   | 6C / 3     | Phillip E. Burnside, et al                 | 666 / 38  | 87.20  |
| 4   | 6C / 2     | John K. Burnside & Wade E. Burnside        | W32 / 225 | 17.00  |
| 5   | 6C / 21    | Clarence C. Thacker, et al                 | 445 / 493 | 166.25 |
| 6   | 6C / 20    | Eastern Gas Transmission & Storage Inc.    | 111 / 361 | 25.14  |
| 7   | 6C / 18    | Bradford A. & Michelle D. Taylor           | 762 / 891 | 76.50  |
| 8   | 6C / 9     | Bradford A. & Michelle D. Taylor           | 762 / 891 | 63.00  |
| 9   | 6C / 12    | Bradford A. Taylor                         | 673 / 1   | 101.78 |
| 10  | 6D / 23    | Scott & Amy Carpenter                      | 709 / 826 | 80.00  |
| 11  | 6D / 22    | Wanda A. White                             | 769 / 66  | 123.00 |
| 12  | 6D / 22.1  | William J. & Tonna B. Roff                 | 710 / 477 | 2.00   |
| 13  | 6D / 66    | James R. & Mary Lou Myers (LE)             | 727 / 811 | 95.00  |
| 14  | 6D / 21    | James R. & Mary Lou Myers (LE)             | 727 / 811 | 95.00  |
| 15  | 6D / 19    | Thorne E. & Ladonna J. Cayton              | 551 / 145 | 78.90  |
| 16  | 6D / 70    | Stephen K. & Amy J. Burke                  | 625 / 543 | 12.54  |
| 17  | 6D / 19.3  | Rupert E. & Judith E. Pumphrey             | 319 / 541 | 1.30   |
| 18  | 6D / 19.6  | Kristi D. Byrd & Larry Crook               | 521 / 189 | 0.88   |
| 19  | 6D / 19.8  | Timothy E. Cayton                          | 561 / 114 | 0.54   |
| 20  | 6D / 19.1  | Shannon Rae Campbell                       | W25 / 121 | 7.60   |
| 21  | 6D / 71.1  | Amy M. Pritt                               | 582 / 740 | 0.48   |
| 22  | 6D / 71    | Stephen K. & Amy J. Burke                  | 507 / 349 | 11.60  |
| 23  | 6E / 63    | Thorne E. & Ladonna J. Cayton              | 551 / 145 | 8.40   |
| 24  | 6E / 65    | Joseph T. & Sara C. Murray                 | 498 / 39  | 17.00  |
| 25  | 6E / 13    | Charles F. Sumpter                         | 600 / 507 | 123.45 |
| 26  | 6E / 66    | Joseph T. & Sara C. Murray                 | 464 / 97  | 21.68  |
| 27  | 6E / 13.16 | Steve & Linda Cornell                      | 644 / 39  | 1.66   |
| 28  | 6E / 13.17 | James B. & Bobbie A. Davisson              | 656 / 403 | 2.93   |
| 29  | 6E / 13.15 | Samuel & Carol England                     | 684 / 240 | 1.26   |
| 30  | 6E / 13.11 | Samuel & Carol England                     | 684 / 240 | 1.69   |
| 31  | 6E / 13.14 | Robert C. Dodson                           | 605 / 373 | 2.04   |
| 32  | 6E / 13.6  | Cecil & Rose Clark                         | 617 / 240 | 1.22   |
| 33  | 6E / 14    | Linda Wright                               | F31 / 130 | 89.12  |
| 34  | 6E / 13.12 | Robert C. Dodson                           | 603 / 67  | 1.00   |
| 35  | 6E / 13.3  | Donald O. & Kelly D. White                 | 663 / 21  | 2.01   |
| 36  | 6E / 28    | Debra A. Lambert                           | 512 / 562 | 36.60  |
| 37  | 6E / 28.1  | Travis J. Taylor                           | 763 / 579 | 3.03   |
| 38  | 6E / 13.9  | Charles F. Sumpter & Charles F. Sumpter II | 620 / 125 | 1.78   |
| 39  | 6E / 27    | Charles F. Sumpter & Charles F. Sumpter II | 620 / 125 | 1.00   |
| 40  | 6E / 14.2  | Linda Wright                               | F31 / 130 | 1.49   |
| 41  | 6E / 14.8  | Thomas W. & Sarah B. Dotson                | 470 / 110 | 1.00   |
| 42  | 6E / 14.1  | Linda Wright                               | F31 / 130 | 8.20   |
| 43  | 6E / 26    | Wesley T. Burton & Waitman T. Burton       | 455 / 387 | 0.97   |
| 44  | 6E / 28.2  | Jeffrey M. Jenkins                         | 715 / 299 | 1.37   |
| 45  | 6E / 28.3  | Debra A. Lambert                           | W18 / 368 | 2.00   |
| 46  | 6E / 24.8  | Justin G. Somerville, et al                | 744 / 616 | 1.73   |
| 47  | 6E / 24.5  | Michael E. Posey, et al                    | 592 / 737 | 1.00   |
| 48  | 6E / 24.4  | James E. & Charlotte A. Posey              | 415 / 156 | 1.00   |
| 49  | 6E / 24.3  | Virginia E. Posey                          | F19 / 95  | 1.00   |
| 50  | 6E / 25    | Denise R. Smith                            | W49 / 627 | 11.81  |
| 51  | 6E / 24    | Elizabeth A. Henline, et al                | W55 / 143 | 34.77  |
| 52  | 6E / 23.1  | Joanna E. & Kevin N. Britton               | 663 / 377 | 48.58  |
| 53  | 6E / 36    | Lydia L. Bailey                            | 240 / 481 | 0.13   |

FILE NO: 235-36-12-19  
DRAWING NO: Evans 1213 S-7H Well Plat  
SCALE: 1" = 2000'  
MINIMUM DEGREE OF ACCURACY:  
Submeter  
PROVEN SOURCE OF ELEVATION:  
CORS, Bridgeport, WV

**STATE OF WEST VIRGINIA**  
DEPARTMENT OF ENVIRONMENTAL PROTECTION  
**OIL AND GAS DIVISION**

DATE: November 8 20 22  
OPERATOR'S WELL NO. Evans 1213 S-7H  
API WELL NO  
47 - 041 - 05723  
STATE COUNTY PERMIT

WELL TYPE:  OIL  GAS  LIQUID INJECTION  WASTE DISPOSAL  
(IF GAS) PRODUCTION:  STORAGE  DEEP  SHALLOW

LOCATION: ELEVATION: 1,227.6' WATERSHED: Middle West Fork Creek

Btm: Weston  
QUADRANGLE: Top: Camden  
COUNTY: **05/17/2024**  
ACREAGE: 294.00

DISTRICT: Freemans Creek

SURFACE OWNER: Suzanne L. Evans & James M., III

ROYALTY OWNER: Mary C. Burnside, et al, et al

LEASE NO: ACREAGE: 294.00

PROPOSED WORK:  DRILL  CONVERT  DRILL DEEPER  FRACTURE OR STIMULATE  PLUG OFF OLD FORMATION  
 PERFORATE NEW FORMATION  OTHER PHYSICAL CHANGE IN WELL (SPECIFY) As-Drilled

PLUG AND ABANDON  CLEAN OUT AND REPLUG TARGET FORMATION: Marcellus Shale ESTIMATED DEPTH: 6,889' TVD 26,063' MD

WELL OPERATOR: HG Energy II Appalachia, LLC  
ADDRESS: 5260 Dupont Road  
Parkersburg, WV 26101

DESIGNATED AGENT: Diane C. White  
ADDRESS: 5260 Dupont Road  
Parkersburg, WV 26101

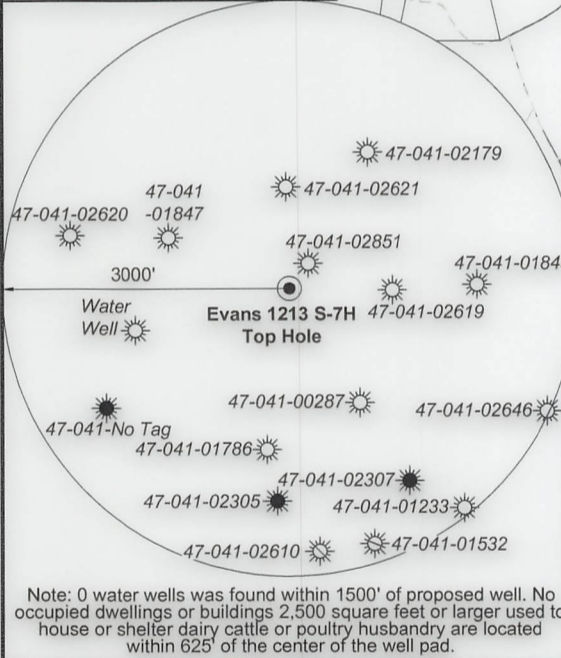
HG Energy II Appalachia, LLC  
Well No. Evans 1213 S-7H  
As-Drilled

Page 1 of 3

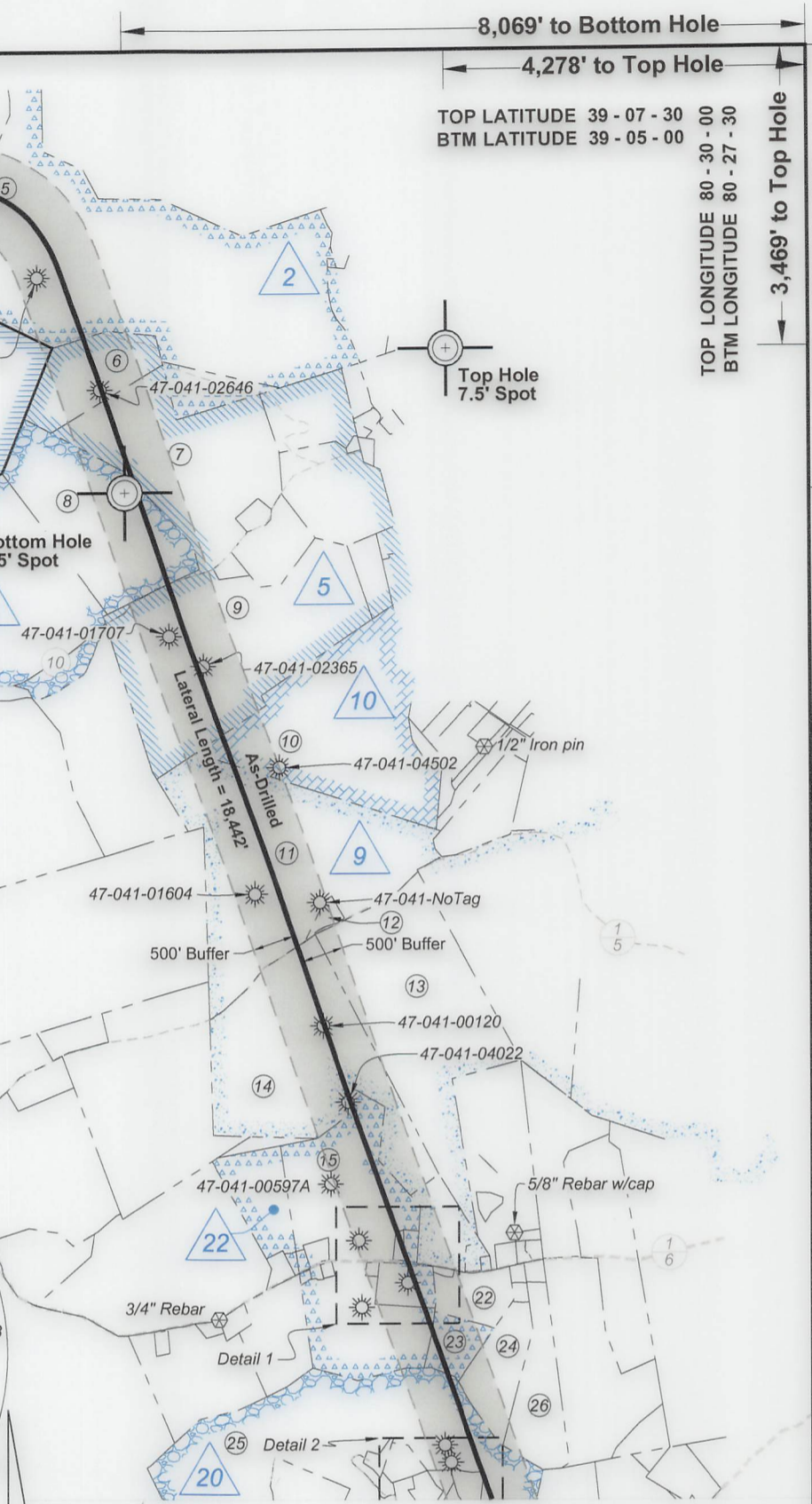


I, the undersigned, hereby certify that this plat is correct to the best of my knowledge and belief and shows all the information required by law and the rules issued and prescribed by the Department of Environmental Protection.

*Kevin S. James*  
Kevin S. James, P.S. 2305



Note: 0 water wells was found within 1500' of proposed well. No occupied dwellings or buildings 2,500 square feet or larger used to house or shelter dairy cattle or poultry husbandry are located within 625' of the center of the well pad.



8,069' to Bottom Hole  
4,278' to Top Hole  
TOP LATITUDE 39 - 07 - 30 00  
BTM LATITUDE 39 - 05 - 00  
TOP LONGITUDE 80 - 30 - 00  
BTM LONGITUDE 80 - 27 - 30  
3,469' to Top Hole  
5,115' to Bottom Hole

| Tag | Bearing    | Dist.    | Description      |
|-----|------------|----------|------------------|
| L1  | N 89°55' W | 1,059.3' | #47-041-02619    |
| L2  | S 66°53' E | 1,386.9' | #47-041-01847    |
| L3  | S 28°15' E | 525.9'   | Gate Post        |
| L4  | S 11°33' E | 2,492.6' | 5/8" Rebar w/cap |

FILE NO: 235-36-12-19  
DRAWING NO: Evans 1213 S-7H Well Plat  
SCALE: 1" = 2000'  
MINIMUM DEGREE OF ACCURACY: Submeter  
PROVEN SOURCE OF ELEVATION: CORS, Bridgeport, WV

**STATE OF WEST VIRGINIA**  
DEPARTMENT OF ENVIRONMENTAL PROTECTION  
**OIL AND GAS DIVISION**

DATE: November 8 20 22  
OPERATOR'S WELL NO. Evans 1213 S-7H  
API WELL NO  
47 - 041 - 05723  
STATE COUNTY PERMIT

WELL TYPE:  OIL  GAS  LIQUID INJECTION  WASTE DISPOSAL  
(IF GAS) PRODUCTION:  STORAGE  DEEP  SHALLOW

LOCATION: ELEVATION: 1,227.6' WATERSHED: Middle West Fork Creek  
DISTRICT: Freemans Creek  
SURFACE OWNER: Suzanne L. Evans & James M., III  
ROYALTY OWNER: Mary C. Burnside, et al, et al LEASE NO: ACREAGE: 294.00

PROPOSED WORK:  DRILL  CONVERT  DRILL DEEPER  FRACTURE OR STIMULATE  PLUG OFF OLD FORMATION  
 PERFORATE NEW FORMATION  OTHER PHYSICAL CHANGE IN WELL (SPECIFY) As-Drilled 6,889' TVD  
 PLUG AND ABANDON  CLEAN OUT AND REPLUG TARGET FORMATION: Marcellus Shale ESTIMATED DEPTH: 26,063' MD

WELL OPERATOR: HG Energy II Appalachia, LLC DESIGNATED AGENT: Diane C. White  
ADDRESS: 5260 Dupont Road ADDRESS: 5260 Dupont Road  
Parkersburg, WV 26101 Parkersburg, WV 26101

05/17/2024

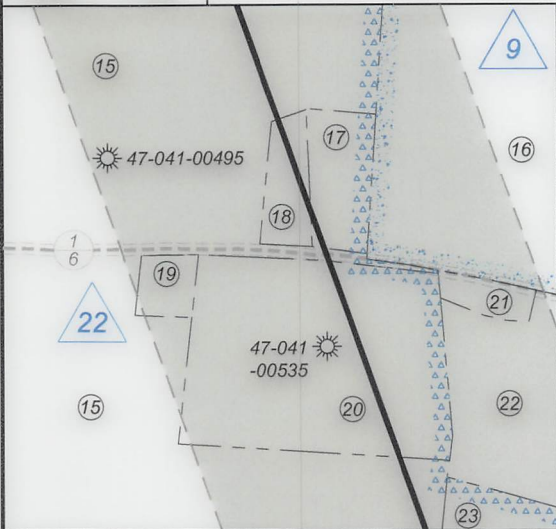
HG Energy II Appalachia, LLC  
Well No. Evans 1213 S-7H  
As-Drilled



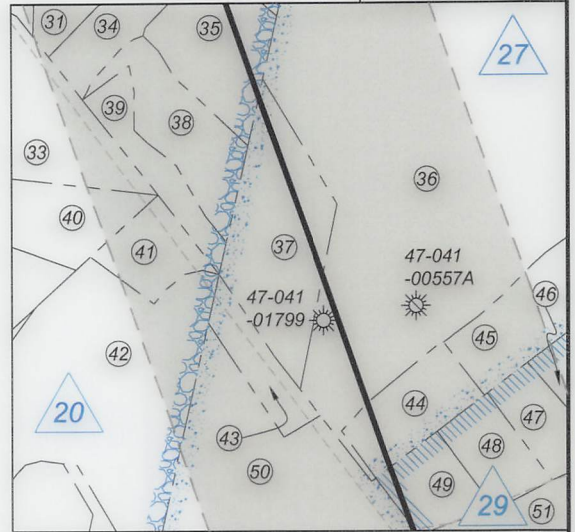
Page 2 of 3



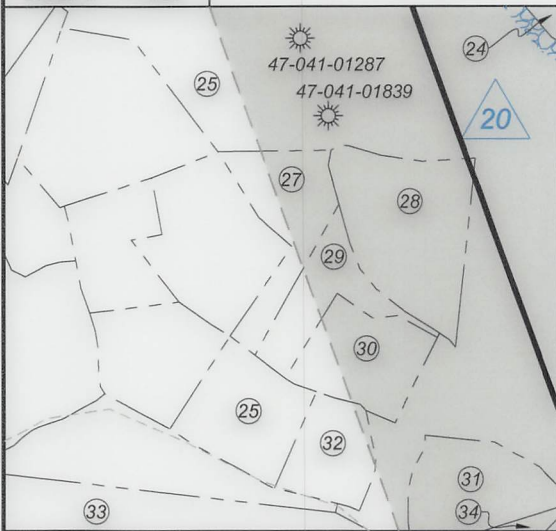
Detail 1 - 1"=500'



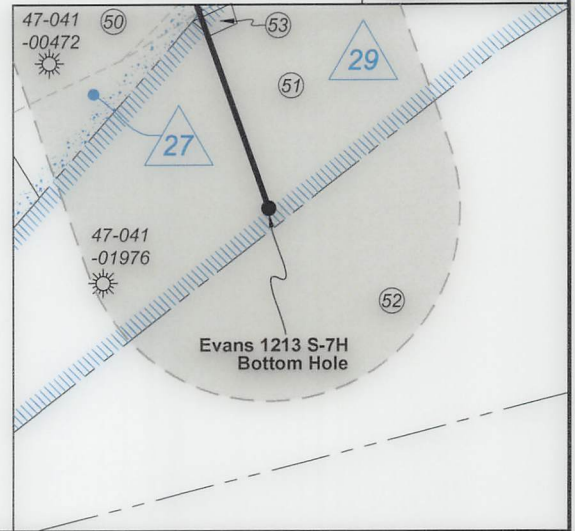
Detail 3 - 1"=500'



Detail 2 - 1"=500'



Detail 4 - 1"=500'



FILE NO: 235-36-12-19  
DRAWING NO: Evans 1213 S-7H Well Plat  
SCALE: 1" = 2000'  
MINIMUM DEGREE OF ACCURACY:  
Submeter  
PROVEN SOURCE OF ELEVATION:  
CORS, Bridgeport, WV

**STATE OF WEST VIRGINIA**  
DEPARTMENT OF ENVIRONMENTAL PROTECTION  
**OIL AND GAS DIVISION**

DATE: November 8 2022  
OPERATOR'S WELL NO. Evans 1213 S-7H  
API WELL NO  
47 - 041 - 05723  
STATE COUNTY PERMIT

WELL TYPE:  OIL  GAS  LIQUID INJECTION  WASTE DISPOSAL  
(IF GAS) PRODUCTION:  STORAGE  DEEP  SHALLOW

LOCATION: ELEVATION: 1,227.6' WATERSHED: Middle West Fork Creek

Btm: Weston  
QUADRANGLE: Top: Camden

DISTRICT: Freemans Creek

COUNTY: Wayne **05/17/2024**

SURFACE OWNER: Suzanne L. Evans & James M., III

ACREAGE: 294.00

ROYALTY OWNER: Mary C. Burnside, et al, et al

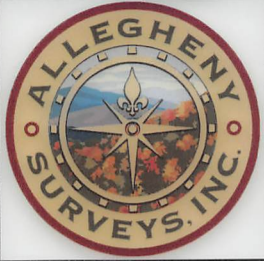
LEASE NO: \_\_\_\_\_ ACREAGE: 294.00

PROPOSED WORK:  DRILL  CONVERT  DRILL DEEPER  FRACTURE OR STIMULATE  PLUG OFF OLD FORMATION  
 PERFORATE NEW FORMATION  OTHER PHYSICAL CHANGE IN WELL (SPECIFY) As-Drilled

PLUG AND ABANDON  CLEAN OUT AND REPLUG TARGET FORMATION: Marcellus Shale ESTIMATED DEPTH: 6,889' TVD 26,063' MD

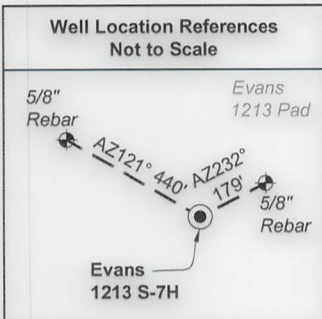
WELL OPERATOR: HG Energy II Appalachia, LLC  
ADDRESS: 5260 Dupont Road  
Parkersburg, WV 26101

DESIGNATED AGENT: Diane C. White  
ADDRESS: 5260 Dupont Road  
Parkersburg, WV 26101



| ID | Lease                       |
|----|-----------------------------|
| 2  | J.S. Norris                 |
| 4  | Mary C. Burnside, et vir    |
| 5  | Abram Gaston                |
| 7  | L.E. & Henrietta Gall       |
| 9  | John W. Norris              |
| 10 | Margaret F. Shutts          |
| 20 | T.Lee & S.V. Hudkins        |
| 22 | S.H. Bailey, widower, et al |
| 27 | D.B. & Edna Bailey, et al   |
| 29 | Lydia L. Bailey, et al      |

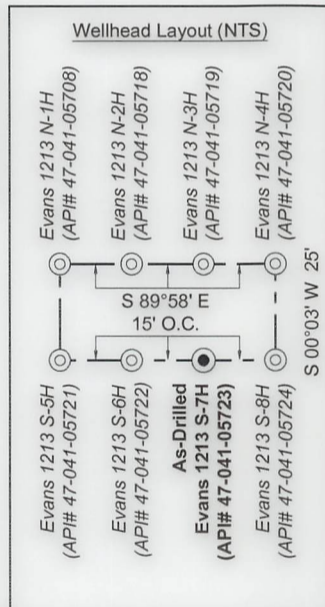
**Notes:**  
Well No. Evans 1213 S-7H  
UTM NAD 1983 (USSF)  
Top Hole Coordinates  
N: 14,205,067.26'  
E: 1,778,006.97'  
Landing Point Coordinates  
N: 14,205,654.76'  
E: 1,779,975.85'  
Bottom Hole Coordinates  
N: 14,188,295.11'  
E: 1,786,134.27'



**Notes:** Well No. Evans 1213 S-7H  
West Virginia Coordinate System of 1927, North Zone  
based upon Differential GPS Measurements.  
Top Hole coordinates Bottom Hole coordinates  
Latitude: 39°06'55.71" Latitude: 39°04'09.43"  
Longitude: 80°30'54.29" Longitude: 80°29'12.35"  
UTM Zone 17, NAD 1983  
Top Hole Coordinates Bottom Hole Coordinates  
N: 4,329,713.160m N: 4,324,600.999m  
E: 541,937.608m E: 544,414.814m  
Plat orientation and corner and well references are  
based upon the grid north meridian. Well location  
references are based upon the magnetic meridian.

**Legend**

- Proposed gas well
- Well Reference, as noted
- Monument, as noted
- Existing Well, as noted
- Existing Plugged Well, as noted
- Digitized Well, as noted
- Creek or Drain
- Existing Road
- Surface boundary (approx.)
- Adjoiner surface tracts (approx.)



|     |            | Lewis Co. - Freeman Creek Dist.            |                  |
|-----|------------|--|------------------|
| No. | TM / Par   | Owner                                      | Bk / Pg Ac.      |
| 1   | 6C / 4     | Suzanne L. & James M. Evans, III           | 657 / 228 294.00 |
| 2   | 6C / 3.2   | John K. Burnside & Bertha F. Benedum       | 666 / 44 115.00  |
| 3   | 6C / 3     | Phillip E. Burnside, et al                 | 666 / 38 87.20   |
| 4   | 6C / 2     | John K. Burnside & Wade E. Burnside        | W32 / 225 17.00  |
| 5   | 6C / 21    | Clarence C. Thacker, et al                 | 445 / 493 166.25 |
| 6   | 6C / 20    | Eastern Gas Transmission & Storage Inc.    | 111 / 361 25.14  |
| 7   | 6C / 18    | Bradford A. & Michelle D. Taylor           | 762 / 891 76.50  |
| 8   | 6C / 9     | Bradford A. & Michelle D. Taylor           | 762 / 891 63.00  |
| 9   | 6C / 12    | Bradford A. Taylor                         | 673 / 1 101.78   |
| 10  | 6D / 23    | Scott & Amy Carpenter                      | 709 / 826 80.00  |
| 11  | 6D / 22    | Wanda A. White                             | 769 / 66 123.00  |
| 12  | 6D / 22.1  | William J. & Tonna B. Roff                 | 710 / 477 2.00   |
| 13  | 6D / 66    | James R. & Mary Lou Myers (LE)             | 727 / 811 95.00  |
| 14  | 6D / 21    | James R. & Mary Lou Myers (LE)             | 727 / 811 95.00  |
| 15  | 6D / 19    | Thorne E. & Ladonna J. Cayton              | 551 / 145 78.90  |
| 16  | 6D / 70    | Stephen K. & Amy J. Burke                  | 625 / 543 12.54  |
| 17  | 6D / 19.3  | Rupert E. & Judith E. Pumphrey             | 319 / 541 1.30   |
| 18  | 6D / 19.6  | Kristi D. Byrd & Larry Crook               | 521 / 189 0.88   |
| 19  | 6D / 19.8  | Timothy E. Cayton                          | 561 / 114 0.54   |
| 20  | 6D / 19.1  | Shannon Rae Campbell                       | W25 / 121 7.60   |
| 21  | 6D / 71.1  | Amy M. Pritt                               | 582 / 740 0.48   |
| 22  | 6D / 71    | Stephen K. & Amy J. Burke                  | 507 / 349 11.60  |
| 23  | 6E / 63    | Thorne E. & Ladonna J. Cayton              | 551 / 145 8.40   |
| 24  | 6E / 65    | Joseph T. & Sara C. Murray                 | 498 / 39 17.00   |
| 25  | 6E / 13    | Charles F. Sumpter                         | 600 / 507 123.45 |
| 26  | 6E / 66    | Joseph T. & Sara C. Murray                 | 464 / 97 21.68   |
| 27  | 6E / 13.16 | Steve & Linda Cornell                      | 644 / 39 1.66    |
| 28  | 6E / 13.17 | James B. & Bobbie A. Davisson              | 656 / 403 2.93   |
| 29  | 6E / 13.15 | Samuel & Carol England                     | 684 / 240 1.26   |
| 30  | 6E / 13.11 | Samuel & Carol England                     | 684 / 240 1.69   |
| 31  | 6E / 13.14 | Robert C. Dodson                           | 605 / 373 2.04   |
| 32  | 6E / 13.6  | Cecil & Rose Clark                         | 617 / 240 1.22   |
| 33  | 6E / 14    | Linda Wright                               | F31 / 130 89.12  |
| 34  | 6E / 13.12 | Robert C. Dodson                           | 603 / 67 1.00    |
| 35  | 6E / 13.3  | Donald O. & Kelly D. White                 | 663 / 21 2.01    |
| 36  | 6E / 28    | Debra A. Lambert                           | 512 / 562 36.60  |
| 37  | 6E / 28.1  | Travis J. Taylor                           | 763 / 579 3.03   |
| 38  | 6E / 13.9  | Charles F. Sumpter & Charles F. Sumpter II | 620 / 125 1.78   |
| 39  | 6E / 27    | Charles F. Sumpter & Charles F. Sumpter II | 620 / 125 1.00   |
| 40  | 6E / 14.2  | Linda Wright                               | F31 / 130 1.49   |
| 41  | 6E / 14.8  | Thomas W. & Sarah B. Dotson                | 470 / 110 1.00   |
| 42  | 6E / 14.1  | Linda Wright                               | F31 / 130 8.20   |
| 43  | 6E / 26    | Wesley T. Burton & Waitman T. Burton       | 455 / 387 0.97   |
| 44  | 6E / 28.2  | Jeffrey M. Jenkins                         | 715 / 299 1.37   |
| 45  | 6E / 28.3  | Debra A. Lambert                           | W18 / 368 2.00   |
| 46  | 6E / 24.8  | Justin G. Somerville, et al                | 744 / 616 1.73   |
| 47  | 6E / 24.5  | Michael E. Posey, et al                    | 592 / 737 1.00   |
| 48  | 6E / 24.4  | James E. & Charlotte A. Posey              | 415 / 156 1.00   |
| 49  | 6E / 24.3  | Virginia E. Posey                          | F19 / 95 1.00    |
| 50  | 6E / 25    | Denise R. Smith                            | W49 / 627 11.81  |
| 51  | 6E / 24    | Elizabeth A. Henline, et al                | W55 / 143 34.77  |
| 52  | 6E / 23.1  | Joanna E. & Kevin N. Britton               | 663 / 377 48.58  |
| 53  | 6E / 36    | Lydia L. Bailey                            | 240 / 481 0.13   |

FILE NO: 235-36-12-19  
DRAWING NO: Evans 1213 S-7H Well Plat  
SCALE: 1" = 2000'  
MINIMUM DEGREE OF ACCURACY:  
Submeter  
PROVEN SOURCE OF ELEVATION:  
CORS, Bridgeport, WV

**STATE OF WEST VIRGINIA**  
DEPARTMENT OF ENVIRONMENTAL PROTECTION  
**OIL AND GAS DIVISION**

DATE: November 8 2022  
OPERATOR'S WELL NO. Evans 1213 S-7H  
API WELL NO  
47 - 041 - 05723  
STATE COUNTY PERMIT

WELL TYPE:  OIL  GAS  LIQUID INJECTION  WASTE DISPOSAL  
(IF GAS) PRODUCTION:  STORAGE  DEEP  SHALLOW

LOCATION: ELEVATION: 1,227.6' WATERSHED: Middle West Fork Creek  
DISTRICT: Freemans Creek

Btm: Weston  
QUADRANGLE: Top: Camden  
COUNTY: 05/17/2024  
ACREAGE: 294.00

SURFACE OWNER: Suzanne L. Evans & James M., III

ROYALTY OWNER: Mary C. Burnside, et al, et al

LEASE NO: \_\_\_\_\_ ACREAGE: 294.00

PROPOSED WORK:  DRILL  CONVERT  DRILL DEEPER  FRACTURE OR STIMULATE  PLUG OFF OLD FORMATION  
 PERFORATE NEW FORMATION  OTHER PHYSICAL CHANGE IN WELL (SPECIFY) As-Drilled

PLUG AND ABANDON  CLEAN OUT AND REPLUG TARGET FORMATION: Marcellus Shale ESTIMATED DEPTH: 6,889' TVD 26,063' MD

WELL OPERATOR: HG Energy II Appalachia, LLC  
ADDRESS: 5260 Dupont Road  
Parkersburg, WV 26101

DESIGNATED AGENT: Diane C. White  
ADDRESS: 5260 Dupont Road  
Parkersburg, WV 26101