



west virginia department of environmental protection

Office of Oil and Gas
601 57th Street, S.E.
Charleston, WV 25304
(304) 926-0450
fax: (304) 926-0452

Harold D. Ward, Cabinet Secretary
www.dep.wv.gov

Monday, April 1, 2024
PERMIT MODIFICATION APPROVAL
Horizontal 6A / New Drill

HG ENERGY II APPALACHIA, LLC
5260 DUPONT ROAD

PARKERSBURG, WV 26101

Re: Permit Modification Approval for WINANS 1216 N-4H
47-041-05748-00-00

Lateral Extension

HG ENERGY II APPALACHIA, LLC

The Office of Oil and Gas has reviewed the attached permit modification for the above referenced permit. The attached modification has been approved and well work may begin. Please be reminded that the oil and gas inspector is to be notified twenty-four (24) hours before permitted well work is commenced.

If there are any questions, please feel free to contact me at (304) 926- 0450.

A blue ink signature of James A. Martin, written in a cursive style.

James A. Martin
Chief

Operator's Well Number: WINANS 1216 N-4H
Farm Name: STEPHEN B. WINANS
U.S. WELL NUMBER: 47-041-05748-00-00
Horizontal 6A New Drill
Date Modification Issued: 04/01/2024

Promoting a healthy environment.

04/05/2024

STATE OF WEST VIRGINIA
DEPARTMENT OF ENVIRONMENTAL PROTECTION, OFFICE OF OIL AND GAS
WELL WORK PERMIT APPLICATION

1) Well Operator: HG Energy II Appalachia, LLC 494519932 Lewis Freeman Camden 7.5'
Operator ID County District Quadrangle

2) Operator's Well Number: Winans 1216 N-4H Well Pad Name: Winans 1216

3) Farm Name/Surface Owner: HG Energy II Appalachia, LLC Public Road Access: CR 10 @ Freemans Creek Road

4) Elevation, current ground: 1399' Elevation, proposed post-construction: 1394'

5) Well Type (a) Gas Oil _____ Underground Storage _____
Other _____

(b) If Gas Shallow Deep _____
Horizontal _____

6) Existing Pad: Yes or No No

7) Proposed Target Formation(s), Depth(s), Anticipated Thickness and Expected Pressure(s):
Marcellus at 7127'/7200' and 73' in thickness. Anticipated pressure at 4314#.

8) Proposed Total Vertical Depth: 7,175'

9) Formation at Total Vertical Depth: Marcellus

10) Proposed Total Measured Depth: 32,126'

11) Proposed Horizontal Leg Length: 24,095'

12) Approximate Fresh Water Strata Depths: 214', 600', 861', 1306'

13) Method to Determine Fresh Water Depths: Nearest offset well data, (47-041-01754, 2174, 5732, 4411, 2629)

14) Approximate Saltwater Depths: 1605' (Vanek 1215)

15) Approximate Coal Seam Depths: 704', 865', 1214', 1285' (Surface casing is being extended to cover the coal in the DTI Field)

16) Approximate Depth to Possible Void (coal mine, karst, other): None

17) Does Proposed well location contain coal seams directly overlying or adjacent to an active mine? Yes _____ No

(a) If Yes, provide Mine Info: Name: _____
Depth: _____
Seam: _____
Owner: _____

RECEIVED
Office of Oil and Gas
MAR 18 2024
DEPARTMENT OF ENVIRONMENTAL PROTECTION

WW-6B
(04/15)

4704105748
API NO. 47- _____
OPERATOR WELL NO. Winans 1216 N-4H
Well Pad Name: Winans 1216

18)

CASING AND TUBING PROGRAM

TYPE	Size (in)	New or Used	Grade	Weight per ft. (lb/ft)	FOOTAGE: For Drilling (ft)	INTERVALS: Left in Well (ft)	CEMENT: Fill-up (Cu. Ft.)/CTS
Conductor	30"	New	LS	157.5	120'	120' ✓	Drilled In
Fresh Water/Coal	20"	NEW	J-55	94	1360'	1360' ✓	40% Excess, CTS
Intermediate 1	13 3/8"	NEW	J-55 BTC	68	2480'	2480' ✓	40% Excess, CTS
Intermediate 2	9 5/8"	NEW	N/L-80 BTC	40	6050'	6050' ✓	40% Excess Tail, CTS ✓
Production	5 1/2"	NEW	P-110 HP	23	32126'	32126' ✓	20% Excess Tail, CTS
Tubing							
Liners							

Kenneth Greynolds
Digitally signed by: Kenneth Greynolds
DN: CN = Kenneth Greynolds, email = Kenneth.L.Greynolds@wv.gov, C = AD, O = WVDEP, OU = Oil and Gas
Date: 2024.03.13 14:27:58 -0400

TYPE	Size (in)	Wellbore Diameter (in)	Wall Thickness (in)	Burst Pressure (psi)	Anticipated Max. Internal Pressure (psi)	Cement Type	Cement Yield (cu. ft./k)
Conductor	30"	30"	.500				Drilled In
Fresh Water/Coal	20"	26"	.438	2110	1200	Type 1, Class A	40 % excess yield = 1.20, CTS
Intermediate 1	13 3/8"	17 1/2"	.480	3450		Type 1/Class A	Load 40% excess, Tail 0% excess
Intermediate 2	9 5/8"	12 1/4"	.395	5750		Type 1/Class A	Load 40% excess, Tail 0% Excess
Production	5 1/2"	8 1/2"	.415	16240 ✓	12500	Type 1/Class A	20% excess yield = 1.10, tail yield 1.01
Tubing							
Liners							

PACKERS

Kind:				
Sizes:				
Depths Set:				

RECEIVED
Office of Oil and Gas

MAR 18 2024

WV Department of
Environmental Protection

19) Describe proposed well work, including the drilling and plugging back of any pilot hole:

Drill the vertical depth to the Marcellus at an estimated total vertical depth of approximately 7175'. Drill horizontal leg to estimated 24,095' lateral length, 32,126' TMD. Hydraulically fracture, stimulate and be capable of producing from the Marcellus Formation. Should we encounter an unanticipated void in the coal, we will install a minimum of 20' of casing below the void but not more than 100' below the void, set a basket and grout to surface. We plan to run an ACP above the Gantz/Dominion Storage interval to aid in sealing off and isolating the storage interval.

20) Describe fracturing/stimulating methods in detail, including anticipated max pressure and max rate:

The stimulation will be completed with multiple stages divided over the lateral length of the well. Stage spacing is dependent upon engineering design. Slickwater fracturing technique will be utilized on each stage using sand, water, and chemicals. See attached list. Maximum pressure not to exceed 12,500 psi.

21) Total Area to be disturbed, including roads, stockpile area, pits, etc., (acres): 30.31 acres

22) Area to be disturbed for well pad only, less access road (acres): 9.74 acres

23) Describe centralizer placement for each casing string:

No centralizers will be used with conductor casing.
Freshwater/Coal - centralized every 3 joints to surface.
Intermediate 1 - Bow Spring on every joint, will also be running ACP for isolating storage zone
Intermediate 2 - Bow Spring on first 2 joints then every third joint to 100' from surface.
Production - Vertical - Run 1 spiral centralizer every 5 joints from the top of the curve to surface, Curve - Run 1 spiral centralizer every 3 joints from the 1st 5.5' long joint to the top of the curve.

24) Describe all cement additives associated with each cement type:

Conductor - N/A, Casing to be drilled in w/ Dual Rotary Rig.
Fresh Water/Coal - *15.6 ppg PNE-1 + 3% bwoc CaCl40% Excess/Yield=1.20 / CTS*
Intermediate 1 - *** Storage String *** CTS ***15.4 ppg Lead - Yield 1.24 - D998 Surface Set 100 lb / sack (Mix of Class A and Gypsum to meet Dominion Requirements)B348 - 0.5% BWOB Fluid Loss / D013 - 0.75% BWOB Retarder / D47 - 0.02 gal / sack VBWOB Anti Foam / D202 - 0.15% BWOB Dispersant / D095 1.5 lb per BBL CemNET - 60% Excess/15.9 ppg Tail - Yield 1.17 - D896 Surface Set 100 lb / sack (Mix of Class A and Gypsum to meet Dominion Requirements)B160A - 0.15% BWOB Dispersant / B547 - 0.35% BWOB GasBL'OK' / D013 - 0.3% BWOB Retarder / D047 - 0.02 gal / sack Anti Foam / DB01 - 0.03 gal / sack Retarder - 0% Excess*
Intermediate 2 - *Lead: 15.4 ppg PNE-1 + 2.5% bwoc CaCl40% Excess / Tail: 15.9 ppg PNE-1 + 2.5% bwoc CaCl zero% Excess. CTS*
Production - *Lead: 14.5 ppg POZ-PNE-1 + 0.3% bwoc R3 + 1% bwoc EC1 + 0.75 gal/sk FP13L + 0.3% bwoc MPA170Tail: 14.8 ppg PNE-1 + 0.35% bwoc R3 + 0.75 gal/sk FP13L + 50% bwoc ASCA1 + 0.5% bwoc MPA17020% Excess/Lead Yield=1.19Tail Yield=1.94CTS*

25) Proposed borehole conditioning procedures:

Conductor - Ensure the hole is clean at TD.
Fresh Water/Coal - Once casing is at setting depth, circulate a minimum of one hole volume with Fresh Water prior to pumping cement.
Intermediate 1 - Once casing is at setting depth, Circulate and condition at TD. Circulate a minimum of one hole volume prior to pumping cement.
Intermediate 2 - Once casing is at setting depth, Circulate and condition mud at TD. Circulate a minimum of one hole volume prior to pumping cement.
Production - Once on bottom/TD with casing, circulate at max allowable pump rate for at least 2x bottoms up, or until returns and pump pressures indicate the hole is clean. Circulate a minimum of one hole volume prior to pumping cement.

RECEIVED
Office of Oil and Gas
MAR 18 2024

*Note: Attach additional sheets as needed.



**1216 N-4H
Marcellus Shale Horizontal
Lewis County, WV**

*** Storage String *** CTS ***
15.4 ppg Lead - Yield 1.24 - D896 Surface Set 100 lb / sack (Mix of Class A and Gypsum to meet Dominion Requirements)
B348 - 0.5% BWOB Fluid Loss / D013 - 0.75% BWOB Retarder / D47 - 0.02 gal / sack VEWOB Anti Foam / D202 - 0.15% BWOB
Dispersant / D095 1.5 lb per BBL CemNET* - 60% Excess
15.9 ppg Tail - Yield 1.17 - D896 Surface Set 100 lb / sack (Mix of Class A and Gypsum to meet Dominion Requirements)
B160A - 0.15% BWOB Dispersant / B547 - 0.35% BWOB GasBLOK* / D013 - 0.3% BWOB Retarder / D047 - 0.02 gal / sack Anti Foam /
D801 - 0.03 gal / sack Retarder - 0% Excess

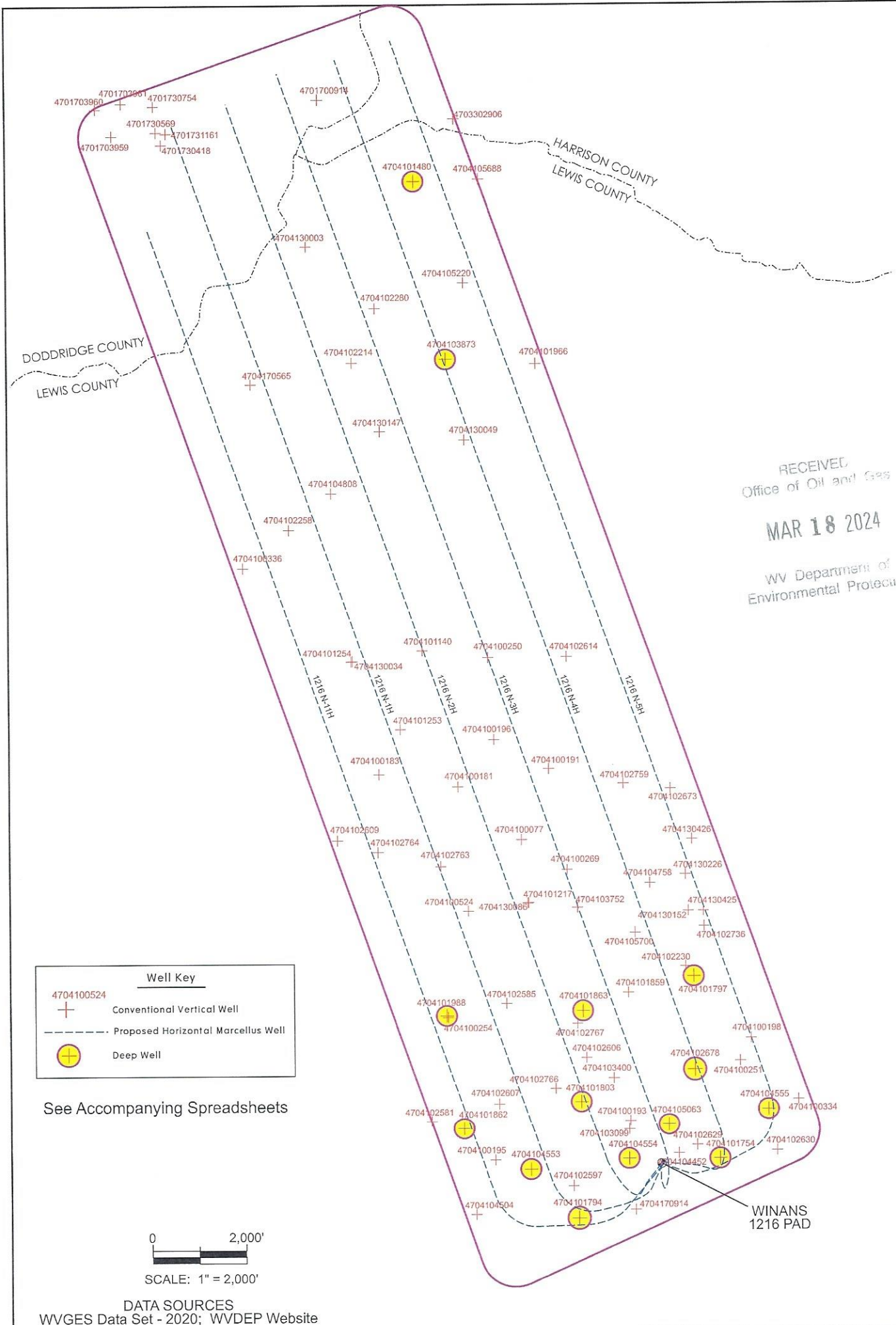
Ground Elevation		1394'		1216 N-4H SHL		1216 N-4H LP		1216 N-4H BHL		14202126.91N 1762546.2E		14203002.6N 1763749.79E		14225716.69N 1755738.67E	
Azim		340.575°		1216 N-4H SHL		1216 N-4H LP		1216 N-4H BHL		14202126.91N 1762546.2E		14203002.6N 1763749.79E		14225716.69N 1755738.67E	
WELLBORE DIAGRAM	HOLE	CASING	GEOLOGY	TOP	BASE	MUD	CEMENT	CENTRALIZERS	CONDITIONING	COMMENTS					
	30"	30" 157.5# LS	Conductor	0	120	AIR	N/A, Casing to be drilled in w/ Dual Rotary Rig	N/A	Ensure the hole is clean at TD.	Conductor casing = 0.5" wall thickness					
	26"	20" 94# J-55	Fresh Water	0	214, 600, 861, 1306	AIR	15.6 ppg PNE-1 + 3% bwoc CaCl 40% Excess Yield=1.20 / CTS	Centralized every 3 joints to surface	Once casing is at setting depth, circulate a minimum of one hole volume with Fresh Water prior to pumping cement.	Surface casing = 0.438" wall thickness Burst=2110 psi					
			Coals	650, 800, 1414											
	17.5"	13-3/8" 66# J-55 BTC	Fresh Water Protection	0	1360	AIR / KCL - Salt Polymer	See above (LEFT) for Storage String Cement Blend to Meet DTI Requirements for Gas Storage Field Isolation	Bow Spring on every joint *Will also be running ACP for isolating storage zone*	Once casing is at setting depth, Circulate and condition at TD. Circulate a minimum of one hole volume prior to pumping cement.	Intermediate casing = 0.480" wall thickness Burst=3450 psi					
			Little Lime	1927	1942										
	12.25"	9-5/8" 40# N / L-80 BTC	Big Lime	1980	2036	AIR / KCL - Salt Polymer	Lead: 15.4 ppg PNE-1 + 2.5% bwoc CaCl 40% Excess / Tail: 15.9 ppg PNE-1 + 2.5% bwoc CaCl zero% Excess. CTS	Bow Spring on first 2 joints then every third joint to 100' form surface	Once casing is at setting depth, Circulate and condition mud at TD. Circulate a minimum of one hole volume prior to pumping cement.	Intermediate casing = 0.395" wall thickness Burst=5750 psi					
			Injun / Gantz (Storage)	2036 / 2314	2134 / 2372										
			Intermediate 1	0	2480										
			Thirty Foot	2519	2531										
			Gordon	2594	2640										
5th Sand			2818	2850											
8.75"	5-1/2" 23# P-110 HP TXP / W461	Bayard	2884	2900	AIR / KCL - Salt Polymer	Lead: 14.5 ppg POZ-PNE-1 + 0.3% bwoc R3 + 1% bwoc EC1 + 0.75 gal/sk FP13L + 0.3% bwoc MPA170 Tail: 14.8 ppg PNE-1 + 0.35% bwoc R3 + 0.75 gal/sk FP13L + 50% bwoc ASCA1 + 0.5% bwoc MPA170 20% Excess Lead Yield=1.19 Tail Yield=1.94 CTS	Run 1 spiral centralizer every 5 joints from the top of the curve to surface.	Once on bottom/TD with casing - circulate at max allowable pump rate for at least 2x bottoms up, or until returns and pump pressures indicate the hole is clean. Circulate a minimum of one hole volume prior to pumping cement.	Production casing = 0.415" wall thickness Burst=16240 psi Note: Actual centralizer schedules may be changed due to hole conditions						
Speechley		3515	3531												
Balltown / Benson		3669 / 4840	3783 / 4868												
Alexander / Elk		5418 / 5647	5543 / 5675												
Intermediate 2		0	MD: 6050' Inc. 30 deg.												
Rhinestreet		6270	6504												
Cashaqua		6504	6758												
Middlesex		6758	6837												
West River		6837	6937												
Burkett		6937	6962												
8.5" Curve	8.5" Lateral	Tully Limestone	6962	7054	11.5ppg-12.5ppg SOBM	Run 1 spiral centralizer every 3 joints from the 1st 5.5' long joint to the top of the curve.									
Hamilton		7054	6753												
Marcellus		7127	7200												
TMD / TVD (Production)		32125	7175												
Onondaga	7200														

RECEIVED
Office of Oil and Gas
MAR 18 2024

TD @ +/-7175' TVD
+/-32125' MD
X=centralizers

+/-24094' Lateral

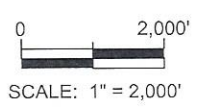
LP @ 7175' TVD / 8031'
MD
8.5" Hole - Cemented Long String
5-1/2" 23# P-110 HP TXP / W461



RECEIVED
Office of Oil and Gas
MAR 18 2024
WV Department of
Environmental Protection

Well Key	
4704100524	+
	Conventional Vertical Well
	- - - - -
	Proposed Horizontal Marcellus Well
	⊕
	Deep Well

See Accompanying Spreadsheets



DATA SOURCES
WVGES Data Set - 2020; WVDEP Website

Area of Review for:

WINANS 1216 NORTH UNIT

- Proposed 1216 N-1H
- Proposed 1216 N-2H
- Proposed 1216 N-3H
- Proposed 1216 N-4H
- Proposed 1216 N-5H
- Proposed 1216 N-11H

HG ENERGY, II APPALACHIA, LLC
5260 DuPont Road, Parkersburg, WV 26101

04/05/2024



Freeman's Creek District, Lewis County, W.Va.
Union District, Harrison County, W.Va.
Greenbrier District, Doddridge County, W.Va.

10/11/2023

EXISTING WELLS LOCATED WITHIN THE AREA OF REVIEW FOR:

WINANS 1216 NORTH UNIT AND PROPOSED WELLS N-1H, N-2H, N-3H, N-4H, N-5H & N-11H

CT	API	COUNTY	FARM RECEIVED	OPERATOR NAME	FORMATION NAME	WELL TYPE	TVD	STATUS	LATITUDE	LONGITUDE
1	4701700914	Doddridge	W C Nicholas Office of Operations	Stonestreet Lands Co.	Gordon	Oil w/ Gas Show	2865	PLUGGED	39.170268	-80.594453
2	4701703959	Doddridge	Mary Smith	Beechlick Oil, Inc.	UNKNOWN	Gas	-	ACTIVE	39.168252	-80.609979
3	4701703960	Doddridge	Karen Frazee	Beechlick Oil, Inc.	UNKNOWN	Gas	-	ACTIVE	39.169814	-80.611189
4	4701703961	Doddridge	Karen Frazee	Beechlick Oil, Inc.	UNKNOWN	Gas	-	ACTIVE	39.170137	-80.609235
5	4701730418	Doddridge	Edgar Davidson	Hope Construction & Refining	Big Injun (undiff)	Oil	2102	PLUGGED	39.167717	-80.606253
6	4701730569	Doddridge	R W Golden	Hope Natural Gas Company	Up Devonian	Gas	2911	PLUGGED	39.168442	-80.606626
7	4701730754	Doddridge	Edgar Davidson	Hope Natural Gas Company	Hampshire Grp	not available	2872	PLUGGED	39.169961	-80.606818
8	4701731161	Doddridge	Edgar Davidson	Hope Natural Gas Company	Hampshire Grp	Gas	2928	PLUGGED	39.168364	-80.605886
9	4703302906	Harrison	W W Nicholson	WV Mineral Group, LLC	Bradford	Oil and Gas	4129	ACTIVE	39.169087	-80.584184
10	4704100077	Lewis	Straley Heirs	Eastern Gas Transmission & Storage, Inc.	Squaw	Storage	2432	PLUGGED	39.126785	-80.579708
11	4704100181	Lewis	Trust	Eastern Gas Transmission & Storage, Inc.	Hampshire Grp	Storage	2383	ACTIVE	39.129925	-80.584464
12	4704100183	Lewis	Charles E Gum	Eastern Gas Transmission & Storage, Inc.	Hampshire Grp	Storage	2294	ACTIVE	39.130684	-80.590394
13	4704100191	Lewis	Alexander Brown	Eastern Gas Transmission & Storage, Inc.	UNKNOWN	Storage	3650	PLUGGED	39.130937	-80.577606
14	4704100193	Lewis	J P Hull	Eastern Gas Transmission & Storage, Inc.	Up Devonian	Storage	2179	PLUGGED	39.110213	-80.571739
15	4704100195	Lewis	Henry Snyder	Eastern Gas Transmission & Storage, Inc.	Gantz	Storage	2390	ACTIVE	39.107930	-80.581935
16	4704100196	Lewis	Marvin Lynn/M Simons	Eastern Gas Transmission & Storage, Inc.	Hampshire Grp	Storage	2462	ACTIVE	39.132648	-80.581693
17	4704100198	Lewis	Minor J Hall	Eastern Gas Transmission & Storage, Inc.	Gantz	Gas	2103	ACTIVE	39.115048	-80.562597
18	4704100250	Lewis	M Law	Eastern Gas Transmission & Storage, Inc.	Gantz	Storage	2327	ACTIVE	39.137475	-80.582081
19	4704100251	Lewis	Minor J Hall	Eastern Gas Transmission & Storage, Inc.	Gantz	Storage	2102	ACTIVE	39.113724	-80.563428
20	4704100254	Lewis	William J Woofter	Chevron USA Inc.	Gordon	Storage	2520	PLUGGED	39.116389	-80.585385
21	4704100269	Lewis	I E Waggoner	Eastern Gas Transmission & Storage, Inc.	Gantz	Storage	2300	ACTIVE	39.125013	-80.576302
22	4704100334	Lewis	Alice Burnside	Eastern Gas Transmission & Storage, Inc.	Hampshire Grp	Storage	2240	ACTIVE	39.111416	-80.559085
23	4704100336	Lewis	T J Fahey Hrs	Hope Natural Gas Company	Up Devonian	Storage	2730	PLUGGED	39.142828	-80.600471
24	4704100524	Lewis	A H Kemper	Eastern Gas Transmission & Storage, Inc.	Hampshire Grp	Storage	2510	ACTIVE	39.122609	-80.583773
25	4704101140	Lewis	M Law	Eastern Gas Transmission & Storage, Inc.	Fifth	Storage	2959	PLUGGED	39.137919	-80.587021
26	4704101217	Lewis	L Woofter	Eastern Gas Transmission & Storage, Inc.	Gantz	Storage	2359	ACTIVE	39.123068	-80.579202
27	4704101253	Lewis	Charles E Gum	Eastern Gas Transmission & Storage, Inc.	UNKNOWN	Storage	3013	ACTIVE	39.133292	-80.588726
28	4704101254	Lewis	C E Gum	Hope Natural Gas Company	Gantz	Storage	2576	PLUGGED	39.1373	-80.59238
29	4704101480	Lewis	Brent Maxwell	Eastern Gas Transmission & Storage, Inc.	Benson	Oil and Gas	5196	ACTIVE	39.165461	-80.587282
30	4704101754	Lewis	Nell L Hull	Eastern Gas Transmission & Storage, Inc.	Greenland Gap Fm	Gas	4853	ACTIVE	39.107951	-80.565020
31	4704101794	Lewis	Robert McKinley/R Seckma	Eastern Gas Transmission & Storage, Inc.	Greenland Gap Fm	Gas	4600	ACTIVE	39.104510	-80.575661
32	4704101797	Lewis	Martha H Burnside	Eastern Gas Transmission & Storage, Inc.	Greenland Gap Fm	Gas	4810	ACTIVE	39.118694	-80.566860
33	4704101803	Lewis	J P Hull	Eastern Gas Transmission & Storage, Inc.	Greenland Gap Fm	Gas	4960	ACTIVE	39.111350	-80.575406
34	4704101859	Lewis	Jacob L Straley	Eastern Gas Transmission & Storage, Inc.	UNKNOWN	not available	2375	PLUGGED	39.117775	-80.571778
35	4704101862	Lewis	Oris B Snyder Hrs	Eastern Gas Transmission & Storage, Inc.	Greenland Gap Fm	Gas	5020	ACTIVE	39.109807	-80.584274

04/05/2024

RECEIVED
Charles Wooffter Oil and Gas

36	4704101863	Lewis	Charles Wooffter	Eastern Gas Transmission & Storage, Inc.	Misc Sands-BNSN/BRLR	Dry w/ Gas Show	4941	39.116724	-80.575201
37	4704101966	Lewis	Brent Maxwell	Eastern Gas Transmission & Storage, Inc.	Gordon	Dry	2896	39.154711	-80.578247
38	4704101988	Lewis	William Wooffter	Eastern Gas Transmission & Storage, Inc.	Benson	Gas	5065	39.116482	-80.585486
39	4704102214	Lewis	L Garrett	Eastern Gas Transmission & Storage, Inc.	Big Injun (Grnbr)	Gas	2209	39.154846	-80.592101
40	4704102230	Lewis	M Hall	Eastern Gas Transmission & Storage, Inc.	UNKNOWN	Gas	2638	39.119289	-80.567460
41	4704102258	Lewis	J Hitt	Eastern Gas Transmission & Storage, Inc.	UNKNOWN	Gas	2873	39.145049	-80.596972
42	4704102280	Lewis	B Maxwell	Eastern Gas Transmission & Storage, Inc.	UNKNOWN	not available	2282	39.158011	-80.590323
43	4704102581	Lewis	Henry Snyder	Eastern Gas Transmission & Storage, Inc.	UNKNOWN	Storage	-	39.110258	-80.586713
44	4704102585	Lewis	Charles Wooffter	Eastern Gas Transmission & Storage, Inc.	UNKNOWN	Storage	2441	39.117184	-80.580948
45	4704102597	Lewis	J P Hull	Eastern Gas Transmission & Storage, Inc.	UNKNOWN	Storage	2394	39.106411	-80.576060
46	4704102606	Lewis	Wm J Wooffter	Eastern Gas Transmission & Storage, Inc.	UNKNOWN	Storage	2810	39.113965	-80.574972
47	4704102607	Lewis	Wm J Wooffter	Eastern Gas Transmission & Storage, Inc.	UNKNOWN	Storage	2749	39.111264	-80.581583
48	4704102609	Lewis	A H Kemper	Eastern Gas Transmission & Storage, Inc.	UNKNOWN	Storage	-	39.126810	-80.593577
49	4704102614	Lewis	Moses T Law	Eastern Gas Transmission & Storage, Inc.	UNKNOWN	Storage	2540	39.137501	-80.576180
50	4704102629	Lewis	et al	Eastern Gas Transmission & Storage, Inc.	UNKNOWN	not available	2685	39.108750	-80.566721
51	4704102630	Lewis	Alice Burnside	Eastern Gas Transmission & Storage, Inc.	UNKNOWN	Storage	2670	39.108393	-80.560717
52	4704102673	Lewis	Alexander Brown	Eastern Gas Transmission & Storage, Inc.	UNKNOWN	not available	2937	39.129725	-80.568463
53	4704102678	Lewis	M J Hall	Eastern Gas Transmission & Storage, Inc.	Brallier	Gas	5250	39.113231	-80.566831
54	4704102736	Lewis	Minor J Hall	Eastern Gas Transmission & Storage, Inc.	UNKNOWN	not available	2878	39.121607	-80.566037
55	4704102759	Lewis	Alexander Brown	Eastern Gas Transmission & Storage, Inc.	UNKNOWN	Storage	2212	39.130046	-80.572012
56	4704102763	Lewis	Straley Heirs	Eastern Gas Transmission & Storage, Inc.	UNKNOWN	Storage	2253	39.125247	-80.585815
57	4704102764	Lewis	James/Neil Hitt	Eastern Gas Transmission & Storage, Inc.	Hampshire Grp	Storage	2437	39.126097	-80.590546
58	4704102766	Lewis	J P Hull	Eastern Gas Transmission & Storage, Inc.	UNKNOWN	Storage	2596	39.112160	-80.577323
59	4704102767	Lewis	Charles Wooffter	Eastern Gas Transmission & Storage, Inc.	UNKNOWN	Storage	2767	39.115989	-80.575640
60	4704103099	Lewis	J W Eakin	Eastern Gas Transmission & Storage, Inc.	UNKNOWN	Storage	1695	39.109710	-80.571810
61	4704103400	Lewis	J W Eakin	Eastern Gas Transmission & Storage, Inc.	Mauch Chunk	Dry	1972	39.112764	-80.572943
62	4704103752	Lewis	Larry & Lynette Hines	Eastern Gas Transmission & Storage, Inc.	UNKNOWN	not available	2808	39.12277	-80.575554
63	4704103873	Lewis	Hazel Kelley	Eastern Gas Transmission & Storage, Inc.	UNKNOWN	not available	5924	39.15501	-80.585015
64	4704104452	Lewis	Nell Louise Hull	CNG Development Co.	UNKNOWN	not available	2330	39.108268	-80.568101
65	4704104504	Lewis	Claude Goldsmith	Consol Gas Company	Big Lime	Dry	-	39.104768	-80.583437
66	4704104553	Lewis	Robert McKinley et al	Eastern Gas Transmission & Storage, Inc.	UNKNOWN	not available	5185	39.107391	-80.579259
67	4704104554	Lewis	Robert McKinley et al	Eastern Gas Transmission & Storage, Inc.	Greenland Gap Fm	Gas	4807	39.107977	-80.571850
68	4704104555	Lewis	Robert E Thompson	Eastern Gas Transmission & Storage, Inc.	Greenland Gap Fm	Gas	4839	39.110838	-80.561324
69	4704104758	Lewis	C A Straley/Lee Wooffter	Eastern Gas Transmission & Storage, Inc.	Greenland Gap Fm	Gas	2613	39.124190	-80.570090
70	4704104808	Lewis	James J Hitt	Eastern Gas Transmission & Storage, Inc.	Fifth	Oil	3027	39.147178	-80.593768
71	4704105063	Lewis	Gerald P Hull	Eastern Gas Transmission & Storage, Inc.	UNKNOWN	not available	5031	39.109975	-80.568827
72	4704105220	Lewis	Flint, Wm. G.	Eastern Gas Transmission & Storage, Inc.	Alexander	Gas	4430	39.090578	-80.45593
73	4704105688	Lewis	John E Tyler	Eastern Gas Transmission & Storage, Inc.	Greenland Gap Fm	Gas	-	39.165574	-80.582408
74	4704105700	Lewis	Lee Wooffter	Diversified Resources, Inc.	UNKNOWN	not available	2597	39.121257	-80.571225
				Eastern Gas Transmission & Storage, Inc.	Gordon	Oil and Gas			

04/05/2024

75	4704130003	Lewis	Lowman G Garrett	Hope Natural Gas Company	UNKNOWN	not available	3241	PLUGGED	39.16168	-80.595447	
76	4704130034	Lewis	Kemper Heirs	Hope Natural Gas Company	Gordon Stray	Gas	2575	PLUGGED	39.137317	-80.592276	
77	4704130049	Lewis	Jno A L Nicholson	Hope Natural Gas Company	Hampshire Grp	Gas	3086	PLUGGED	39.150275	-80.583681	
78	4704130086	Lewis	Lewis Wooffer	(Orphan well pro)	UNKNOWN	not available	2890	PLUGGED	39.12306	-80.579278	
79	4704130147	Lewis	Leman G Garrett	Hope Natural Gas Company	Hampshire Grp	Gas	2918	PLUGGED	39.150804	-80.590043	
80	4704130152	Lewis	J W Bailey	Hope Natural Gas Company	UNKNOWN	not available	2861	PLUGGED	39.122526	-80.567211	
81	4704130226	Lewis	P W Arbogast	South Penn Oil (S. Penn Nat. Gas)	Hampshire Grp	Oil and Gas	2690	PLUGGED	39.124697	-80.567411	
82	4704130425	Lewis	Sarepta Nutter	Bradford Supply Co.	Hampshire Grp	Oil and Gas	2838	PLUGGED	39.122526	-80.566094	
83	4704130426	Lewis	Sarepta Nutter	Bradford Supply Co.	Hampshire Grp	Gas	2783	PLUGGED	39.126151	-80.567401	
84	4704170565	Lewis	J Taylor	UNKNOWN	UNKNOWN	not available	-	ABANDONED	39.153612	-80.599744	
85	4704170914	Lewis	Boyd Gum	Hope Natural Gas Company	UNKNOWN	not available	-	ABANDONED	39.104977	-80.571421	
							YELLOW DENOTES WELL WITH TVD > 4,500'		GREEN DENOTES SURVEYED WELLS		

SOURCE: WVGES DATASET (2020) and WVDEP WEBSITE AND FIELD SURVEYS

UPDATED 10/11/2023

RECEIVED
Office of Oil and Gas

MAR 18 2024

WV Department of
Environmental Protection

04/05/2024

HG Energy II Appalachia, LLC
Well No. Winans 1216 N-4H MOD

Page 1 of 4

7,935' to Top Hole

2,814' to Bottom Hole

TOP LATITUDE 39 - 07 - 30

BTM LATITUDE 39 - 12 - 30

TOP HOLE LONGITUDE 80 - 32 - 30
BTM HOLE LONGITUDE 80 - 35 - 00

6,331' to Top Hole

13,050' to Bottom Hole

Page 2
MATCH LINE



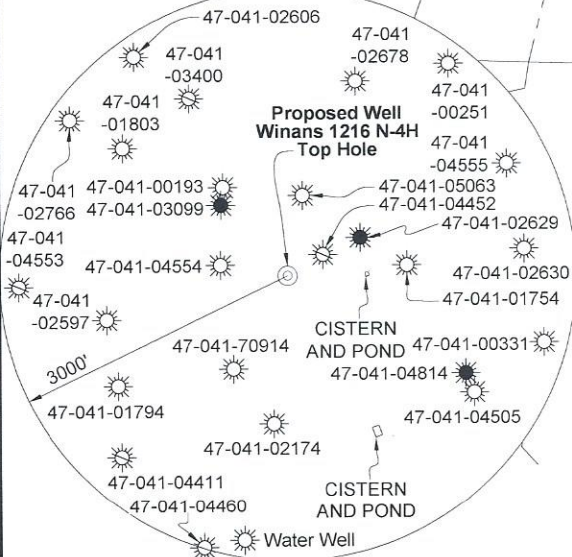
SEAL

I, the undersigned, hereby certify that this plat is correct to the best of my knowledge and belief and shows all the information required by law and the rules issued and prescribed by the Department of Environmental Protection.

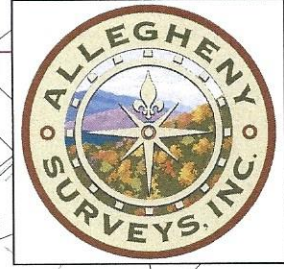
Dwayne D. Matheny
Dwayne D. Matheny, P.S. 2070

Tag	Bearing	Dist.	Monument
L1	S 87°34' W	1,932.5'	1" Pipe
L2	N 44°44' W	3,065.0'	1" Pipe
L3	S 81°57' E	686.6'	47-041-04554
L4	S 42°44' E	989.9'	47-041-03099
L5	N 53°58' E	1,488.4'	Landing Point

Note: 0 water wells, 1 cistern and 1 pond were found within 1500' of proposed well. No occupied dwellings or buildings 2,500 square feet or larger used to house or shelter dairy cattle or poultry husbandry are located within 625' of the center of the well pad.



RECEIVED
Office of Oil and Gas
MAR 18 2024
WV Department of Environmental Protection



FILE NO: 43-12-FC-21
DRAWING NO: Winans 1216 N-4H Well Plat
SCALE: 1" = 2000'
MINIMUM DEGREE OF ACCURACY: Submeter
PROVEN SOURCE OF ELEVATION: CORS, Bridgeport, WV

STATE OF WEST VIRGINIA
DEPARTMENT OF ENVIRONMENTAL PROTECTION
OIL AND GAS DIVISION

DATE: January 24 2024
OPERATOR'S WELL NO. Winans 1216 N-4H
API WELL NO
47 - 041 - 05748
STATE COUNTY PERMIT

WELL TYPE: OIL GAS LIQUID INJECTION WASTE DISPOSAL
(IF GAS) PRODUCTION: STORAGE DEEP SHALLOW

LOCATION: ELEVATION: 1,394' WATERSHED: Fink Creek

QUADRANGLE: Top: Camden
Btm: Big Isaac

DISTRICT: Freemans Creek

COUNTY: Lewis
ACREAGE: 45.00

SURFACE OWNER: Stephen B. Winans

ROYALTY OWNER: Elaina D. Yanceris, et al, et al

LEASE NO: ACREAGE: 123

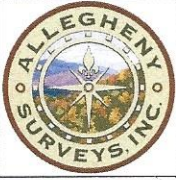
PROPOSED WORK: DRILL CONVERT DRILL DEEPER FRACTURE OR STIMULATE PLUG OFF OLD FORMATION
 PERFORATE NEW FORMATION OTHER PHYSICAL CHANGE IN WELL (SPECIFY) Bottom Hole MOD 7,175' TVD

PLUG AND ABANDON CLEAN OUT AND REPLUG TARGET FORMATION: Marcellus Shale ESTIMATED DEPTH: 32,126' MD

WELL OPERATOR: HG Energy II Appalachia, LLC
ADDRESS: 5260 Dupont Road
Parkersburg, WV 26101

DESIGNATED AGENT: Diane C. White
ADDRESS: 5260 Dupont Road
Parkersburg, WV 26101

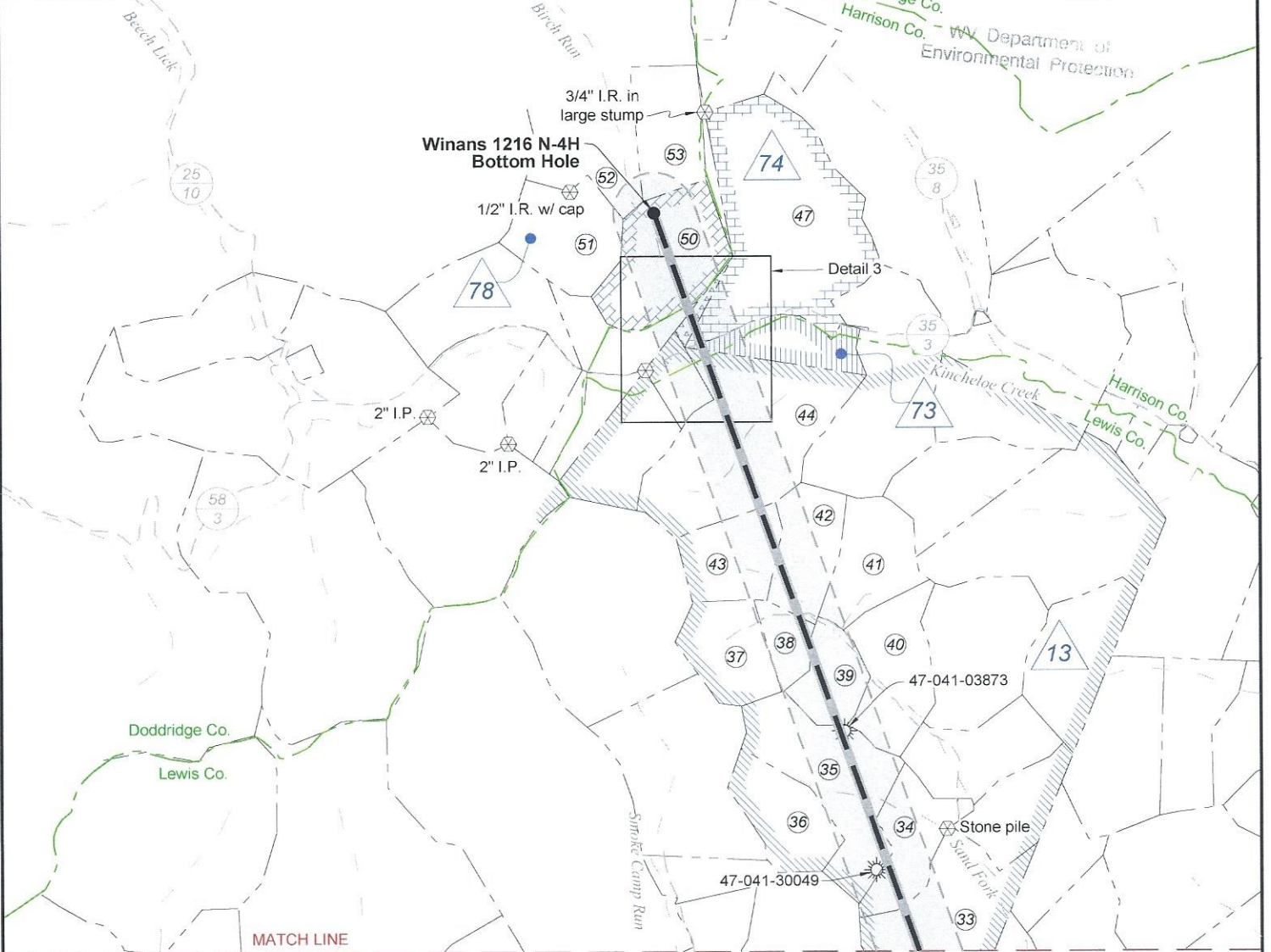
04/05/2024



RECEIVED
Office of Oil and Gas

MAR 18 2024

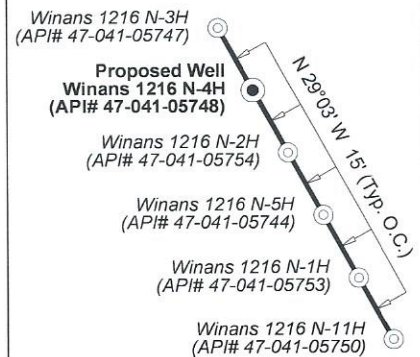
WV Department of
Environmental Protection



MATCH LINE

Page 1

Wellhead Layout (NTS)



Notes: Well No.
Winans 1216 N-4H
UTM NAD 1983 (USSF)
Top Hole Coordinates
N: 14,202,126.91'
E: 1,762,546.20'
Landing Point Coordinates
N: 14,203,002.60'
E: 1,763,749.79'
Bottom Hole Coordinates
N: 14,225,716.69'
E: 1,755,738.67'

Notes: Well No. Winans 1216 N-4H
West Virginia Coordinate System of 1927, North Zone
based upon Differential GPS Measurements.
Top Hole coordinates Bottom Hole coordinates
Latitude: 39°06'27.41" Latitude: 39°10'20.97"
Longitude: 80°34'10.69" Longitude: 80°35'35.74"
UTM Zone 17, NAD 1983
Top Hole Coordinates Bottom Hole Coordinates
N: 4,328,816.940m N: 4,336,007.119m
E: 537,225.156m E: 535,150.217m
Plat orientation and corner and well references are
based upon the grid north meridian. Well location
references are based upon the magnetic meridian.

Well Location References
Not to Scale



FILE NO: 43-12-FC-21
DRAWING NO: Winans 1216 N-4H Well Plat
SCALE: 1" = 2000'
MINIMUM DEGREE OF ACCURACY:
Submeter
PROVEN SOURCE OF ELEVATION:
CORS, Bridgeport, WV

STATE OF WEST VIRGINIA
DEPARTMENT OF ENVIRONMENTAL PROTECTION
OIL AND GAS DIVISION

DATE: January 24 2024
OPERATOR'S WELL NO. Winans 1216 N-4H
API WELL NO
47 - 041 - 05748
STATE COUNTY PERMIT

WELL TYPE: OIL GAS LIQUID INJECTION WASTE DISPOSAL
(IF GAS) PRODUCTION: STORAGE DEEP SHALLOW

LOCATION: ELEVATION: 1,394' WATERSHED: Fink Creek

Top: Camden
Bottom: Big Isaac
QUADRANGLE:

DISTRICT: Freemans Creek

COUNTY: Lewis
ACREAGE: 45.00

SURFACE OWNER: Stephen B. Winans

ROYALTY OWNER: Elaina D. Yanceris, et al, et al

LEASE NO: ACREAGE: 123

PROPOSED WORK: DRILL CONVERT DRILL DEEPER FRACTURE OR STIMULATE PLUG OFF OLD FORMATION
 PERFORATE NEW FORMATION OTHER PHYSICAL CHANGE IN WELL (SPECIFY) Bottom Hole MOD 7,175' TVD

PLUG AND ABANDON CLEAN OUT AND REPLUG TARGET FORMATION: Marcellus Shale ESTIMATED DEPTH: 32,126' MD

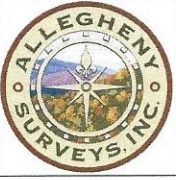
WELL OPERATOR: HG Energy II Appalachia, LLC

DESIGNATED AGENT: Diane C. White

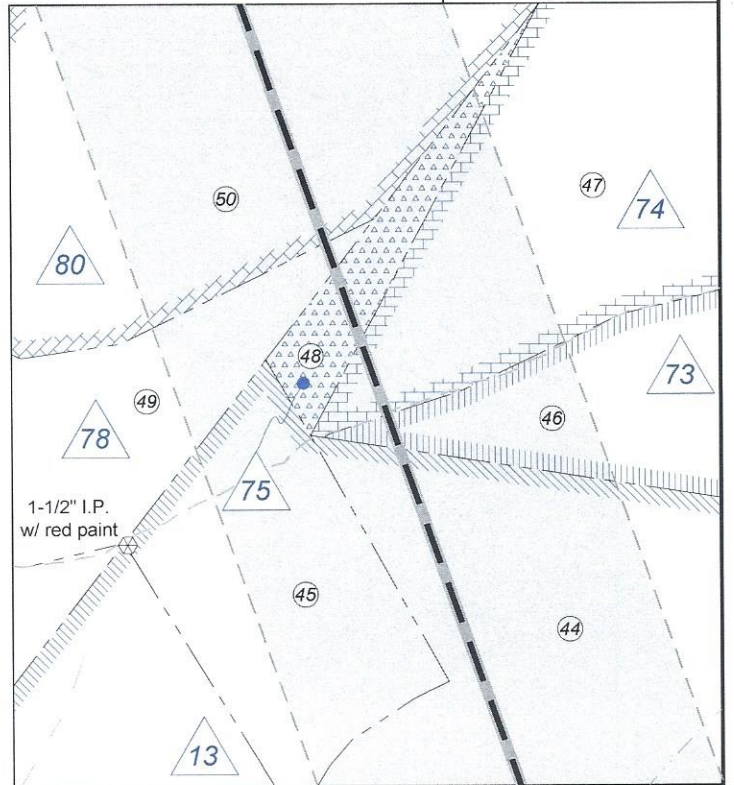
ADDRESS: 5260 Dupont Road
Parkersburg, WV 26101

ADDRESS: 5260 Dupont Road
Parkersburg, WV 26101

04/05/2024



Detail 3 (Scale 1"=500')

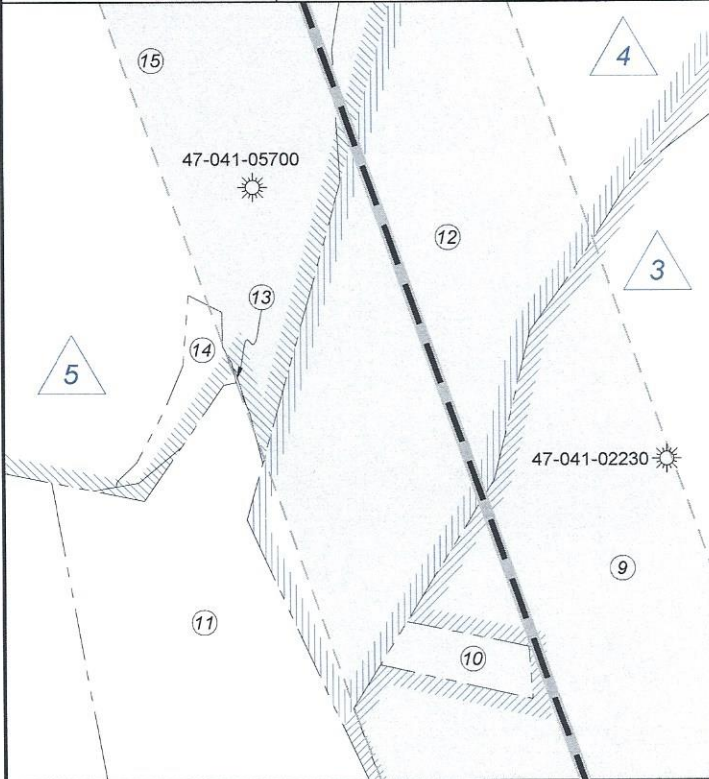


Legend

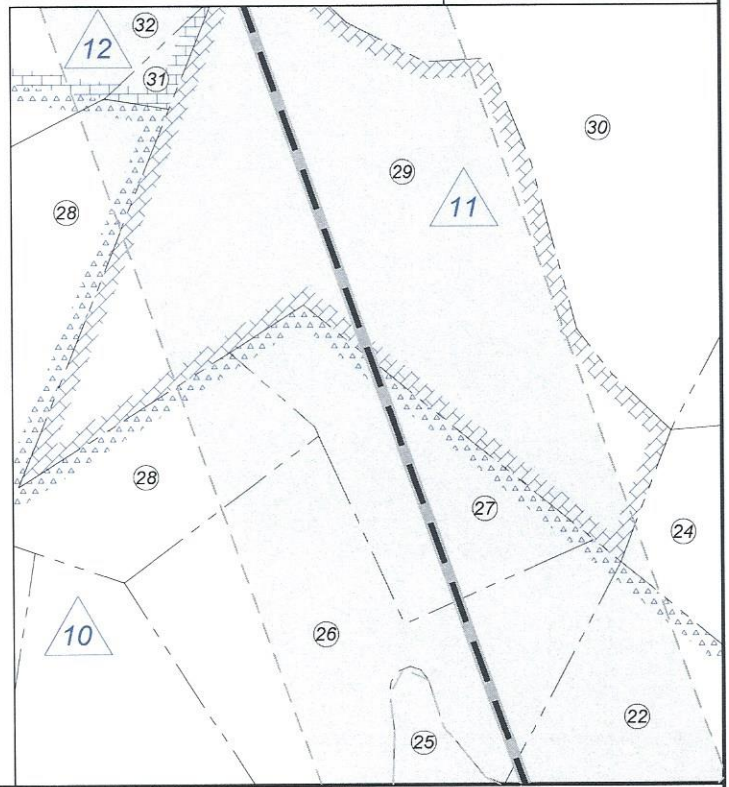
- Proposed gas well
- Well Reference, as noted
- Monument, as noted
- Existing Well, as noted
- Existing Plugged Well, as noted
- Digitized Well, as noted
- Creek or Drain
- Existing Road
- Surface boundary (approx.)

RECEIVED
Office of Oil and Gas
MAR 18 2024
WV Department of
Environmental Protection

Detail 1 (Scale 1"=500')



Detail 2 (Scale 1"=500')



FILE NO: 43-12-FC-21
DRAWING NO: Winans 1216 N-4H Well Plat
SCALE: 1" = 2000'
MINIMUM DEGREE OF ACCURACY:
Submeter
PROVEN SOURCE OF ELEVATION:
CORS, Bridgeport, WV

STATE OF WEST VIRGINIA
DEPARTMENT OF ENVIRONMENTAL PROTECTION
OIL AND GAS DIVISION

DATE: January 24 2024
OPERATOR'S WELL NO. Winans 1216 N-4H
API WELL NO
47 — 041 — 05748
STATE COUNTY PERMIT

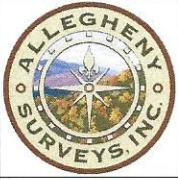
WELL TYPE: OIL GAS LIQUID INJECTION WASTE DISPOSAL
(IF GAS) PRODUCTION: STORAGE DEEP SHALLOW

LOCATION: ELEVATION: 1,394' WATERSHED: Fink Creek
DISTRICT: Freemans Creek
SURFACE OWNER: Stephen B. Winans
ROYALTY OWNER: Elaina D. Yanceris, et al, et al

Top: Camden
Btm: Big Isaac
QUADRANGLE:
COUNTY: Lewis
ACREAGE: 45.00

PROPOSED WORK: DRILL CONVERT DRILL DEEPER FRACTURE OR STIMULATE PLUG OFF OLD FORMATION
 PERFORATE NEW FORMATION OTHER PHYSICAL CHANGE IN WELL (SPECIFY) Bottom Hole MOD 7,175' TVD
 PLUG AND ABANDON CLEAN OUT AND REPLUG TARGET FORMATION: Marcellus Shale ESTIMATED DEPTH: 32,128' MD

WELL OPERATOR: HG Energy II Appalachia, LLC DESIGNATED AGENT: Diane C. White
ADDRESS: 5260 Dupont Road ADDRESS: 5260 Dupont Road
Parkersburg, WV 26101 Parkersburg, WV 26101



Lewis Co. (Freemans Creek Dist.)				
No.	TM / Par	Owner	Bk / Pg	Ac.
1	4C / 21	Stephen B. Winans	630 / 50	45.00
2	4C / 22	Robert & Brenda McKinley	777 / 635	74.00
3	4C / 31	Gerald P. Hull	W18 / 661	199.25
4	5C / 15.1	Gerald P. & Mary J. Hull	439 / 253	6.93
5	4C / 30.1	Faye Isabella	654 / 202	36.88
6	4C / 34	Robert E. & Pamela L. Thompson	519 / 627	38.00
7	4C / 29	H.G. Energy II Appalachia, LLC	780 / 456	0.33
8	4C / 28	H.G. Energy II Appalachia, LLC	780 / 456	6.67
9	4C / 23	Jason E. & Amy L. Hunt	627 / 224	76.25
10	4C / 24	Mt. Zion Baptist Church	- - - / - - -	1.00
11	4C / 10	Ricky Barnes, et al	598 / 747	294.98
12	4C / 26	Charles R. Bailey	W52 / 730	44.20
13	4C / 10.1	David N. Hitt	723 / 640	0.02
14	4C / 25.3	Christopher N. Hitt, et al	781 / 435	1.26
15	4C / 25	David N. Hitt	732 / 27	44.21
16	4C / 33	Crystal M. Mick	713 / 935	92.75
17	4B / 17	Clarence O. Ferguson	552 / 612	96.50
18	4B / 19	Robert J. Bennett	W25 / 121	12.28
19	4B / 20	Robert J. Bennett	W25 / 121	15.50
20	4B / 21	Karl H. & Theresa B. Skaggs, et al	712 / 704	24.00
21	4B / 22	Karl H. & Theresa B. Skaggs, et al	712 / 704	25.75
22	4B / 23	Karl H. & Theresa B. Skaggs, et al	712 / 704	26.00
23	4B / 14	Martin E. McHenry, et al	739 / 3	111.74
24	4B / 25	Sue E. Hall, et al	556 / 536	20.00
25	4B / 26.1	Karl H. Skaggs, et al	W54 / 490	4.33
26	4B / 26	Robert J. Bennett	W25 / 121	16.67
27	4B / 27	Robert J. Bennett	W25 / 121	7.00
28	4B / 28	Robert J. Bennett	W25 / 121	19.78
29	4B / 31	Robert J. Bennett	W25 / 121	29.75
30	4B / 32	Larry K. Coffindaffer, et al	W45 / 431	60.00
31	4B / 30	Robert J. Bennett	W25 / 121	0.75
32	4B / 29	Evan S. Bennett	736 / 327	35.72
33	4B / 47	John W. Morgan	502 / 152	56.50
34	4A / 20	John W. Morgan	601 / 74	27.63
35	4A / 22	John W. Morgan	601 / 74	48.21
36	4A / 21	Edward E. Garrett, et al	429 / 245	27.75
37	4A / 8	Edward E. Garrett, et al	429 / 245	26.00
38	4A / 7	Ed Broome, Inc.	548 / 492	11.00
39	4A / 23	Gary W. Flint	461 / 107	18.75
40	4A / 24	John W. Morgan	601 / 74	29.25
41	4A / 25	Gary W. Flint	461 / 107	27.25
42	4A / 6.1	Kathryn Carpenter, et al	559 / 414	26.25
43	4A / 6	Melvin James, et al	FID / - - -	26.25
44	4A / 2	Haven Sullivan	789 / 834	81.23
45	4A / 3.1	Ed Broome, Inc., et al	548 / 459	10.50
46	4A / 1.1	Haven Sullivan	789 / 834	21.41
Harrison Co. (Union-Outside Dist.)				
No.	TM / Par	Owner	Bk / Pg	Ac.
47	421 / 2	Gregory A. Robertson	1607 / 798	103.13
48	421 / 1	Terry Morgan, et al	W156 / 853	3.18
Doddridge Co. (Greenbrier Dist.)				
No.	TM / Par	Owner	Bk / Pg	Ac.
49	17 / 9.1	Hayward & Jane Phillips	425 / 36	24.00
50	17 / 10	Carol J. Snow	167 / 4	44.83
51	17 / 6	Carol J. Snow	167 / 1	35.00
52	14 / 47	Dunn Foundation WW	252 / 668	310.86
53	14 / 49	Carol J. Snow	167 / 4	28.00

RECEIVED
Office of Oil and Gas

MAR 18 2024

WV Department of
Environmental Protection

ID	Lease
3	Minor J. Hall, et ux
4	Mary M. Bailey, et al
5	Lee Woofter
6	I.E. Waggoner, et ux
8	Alexander Brown, et ux
10	Mary J. McConkey, et vir, et al
11	S.E. Bennett, et ux
12	Ella Bennett, et vir
13	W. Brent Maxwell, et al
61	William & Mary Winans
62	Boyd Gum, et ux
73	Charmian L. Bulley, et al
74	Elva Kost, et al
75	CNX Gas Company, LLC
78	Teresa Gale (Freeman) Oakes, et al
80	Joan Snow, et al

FILE NO: 43-12-FC-21
DRAWING NO: Winans 1216 N-4H Well Plat
SCALE: 1" = 2000'
MINIMUM DEGREE OF ACCURACY:
Submeter
PROVEN SOURCE OF ELEVATION:
CORS, Bridgeport, WV

STATE OF WEST VIRGINIA
DEPARTMENT OF ENVIRONMENTAL PROTECTION
OIL AND GAS DIVISION

DATE: January 24 2024
OPERATOR'S WELL NO. Winans 1216 N-4H
API WELL NO
47 - 041 - 05748
STATE COUNTY PERMIT

WELL TYPE: OIL GAS LIQUID INJECTION WASTE DISPOSAL
(IF GAS) PRODUCTION: STORAGE DEEP SHALLOW

LOCATION: ELEVATION: 1,394' WATERSHED: Fink Creek
DISTRICT: Freemans Creek

Top: Camden
Bottom: Big Isaac
QUADRANGLE:

SURFACE OWNER: Stephen B. Winans

COUNTY: Lewis
ACREAGE: 45.00
04/05/2024

ROYALTY OWNER: Elaina D. Yanceris, et al, et al LEASE NO: ACREAGE: 123

PROPOSED WORK: DRILL CONVERT DRILL DEEPER FRACTURE OR STIMULATE PLUG OFF OLD FORMATION
 PERFORATE NEW FORMATION OTHER PHYSICAL CHANGE IN WELL (SPECIFY) Bottom Hole MOD 7,175' TVD
 PLUG AND ABANDON CLEAN OUT AND REPLUG TARGET FORMATION: Marcellus Shale ESTIMATED DEPTH: 32,126' MD

WELL OPERATOR: HG Energy II Appalachia, LLC DESIGNATED AGENT: Diane C. White
ADDRESS: 5260 Dupont Road ADDRESS: 5260 Dupont Road
Parkersburg, WV 26101 Parkersburg, WV 26101

**INFORMATION SUPPLIED UNDER WEST VIRGINIA CODE
Chapter 22, Article 6A, Section 5(a)(5)
IN LIEU OF FILING LEASE(S) AND OTHER CONTINUING CONTRACT(S)**

Under the oath required to make the verification on page 1 of this Notice and Application, I depose and say that I am the person who signed the Notice and Application for the Applicant, and that –

- (1) the tract of land is the same tract described in this Application, partly or wholly depicted in the accompanying plat, and described in the Construction and Reclamation Plan;
- (2) the parties and recordation data (if recorded) for lease(s) or other continuing contract(s) by which the Applicant claims the right to extract, produce or market the oil or gas are as follows:

Lease Name or Number	Grantor, Lessor, etc.	Grantee, Lessee, etc.	Royalty	Book/Page
----------------------	-----------------------	-----------------------	---------	-----------

See Attached Sheets

RECEIVED
Office of Oil and Gas

MAR 18 2024

WV Department of
Environmental Protection

Co-Tenancy utilization - At least 75% of the royalty owners have consented to the lawful use or development of the natural gas mineral property on the tract. The interests of the remaining co-tenants will be secured pursuant to the Co-Tenancy Act
Horizontal Well Unit Utilization - Subject to unitization filing with the WV Oil and Gas Conservation Commission

**Acknowledgement of Possible Permitting/Approval
In Addition to the Office of Oil and Gas**

The permit applicant for the proposed well work addressed in this application hereby acknowledges the possibility of the need for permits and/or approvals from local, state, or federal entities in addition to the DEP, Office of Oil and Gas, including but not limited to the following:

- WV Division of Water and Waste Management
- WV Division of Natural Resources WV Division of Highways
- U.S. Army Corps of Engineers
- U.S. Fish and Wildlife Service
- County Floodplain Coordinator

The applicant further acknowledges that any Office of Oil and Gas permit in no way overrides, replaces, or nullifies the need for other permits/approvals that may be necessary and further affirms that all needed permits/approvals should be acquired from the appropriate authority before the affected activity is initiated.

Well Operator: HG Energy II Appalachia, LLC
By: Diane White
Its: Accountant

16N Tract	LEGACY LEASE NUMBER	TAX MAP	LEAS
62	FK053212	03-004C-0031-0000	01
61	FK053100	03-004C-0021-0000 03-004D-0046-0000 03-004D-0046-0001 03-004D-0047-0000 03-004D-0047-0001 03-004D-0047-0002 03-005D-0064-0000 03-005D-0065-0000	01

04/05/2024

<p>RECEIVED Office of Oil and Gas MAR 18 2024</p>	<p>WV Department of Environmental Protection</p>	<p>03-004B-0017-0000</p>	<p>Q100453000</p>	<p>CNX GAS COMPANY LLC NOBLE ENERGY, INC. DOMINION TRANSMISSION, INC. DOMINION ENERGY TRANSMISSION, INC. DOMINION ENERGY TRANSMISSION, INC. DOMINION ENERGY TRANSMISSION, INC. ALEXANDER BROWN AND M. E. BROWN, HIS WIFE SOUTH PENN OIL COMPANY SOUTH PENN NATURAL GAS COMPANY HOPE NATURAL GAS COMPANY CONSOLIDATED GAS SUPPLY CORPORATION CONSOLIDATED GAS TRANSMISSION CORPORATION CNG TRANSMISSION CORPORATION DOMINION TRANSMISSION, INC. CNX GAS COMPANY LLC DOMINION TRANSMISSION, INC. CNX GAS COMPANY LLC NOBLE ENERGY, INC. DOMINION TRANSMISSION, INC. DOMINION ENERGY TRANSMISSION, INC. DOMINION ENERGY TRANSMISSION, INC. DOMINION ENERGY TRANSMISSION, INC. DOMINION ENERGY TRANSMISSION, INC.</p>	<p>NOBLE ENERGY, INC. HG ENERGY II APPALACHIA, LLC DOMINION ENERGY TRANSMISSION, INC. HG ENERGY II APPALACHIA, LLC HG ENERGY II APPALACHIA, LLC SOUTH PENN OIL COMPANY SOUTH PENN NATURAL GAS COMPANY HOPE NATURAL GAS COMPANY CONSOLIDATED GAS SUPPLY CORPORATION CONSOLIDATED GAS TRANSMISSION CORPORATION CNG TRANSMISSION CORPORATION DOMINION TRANSMISSION, INC. CNX GAS COMPANY LLC NOBLE ENERGY, INC. CNX GAS COMPANY LLC AND NOBLE ENERGY, INC. NOBLE ENERGY, INC. HG ENERGY II APPALACHIA, LLC DOMINION ENERGY TRANSMISSION, INC. HG ENERGY II APPALACHIA, LLC HG ENERGY II APPALACHIA, LLC HG ENERGY II APPALACHIA, LLC LOUIS BENNETT AND S. E. BARRETT</p>	<p>ASSIGNMENT ASSIGNMENT MERGER/NAME CHANGE SECOND AMENDMENT TO MEMORANDUM OF FARMOUT AGREEMENT THIRD AMENDMENT TO MEMORANDUM OF FARMOUT AGREEMENT ASSIGNMENT (68%) NOT LESS THAN 1/8 ASSIGNMENT ASSIGNMENT CONFIRMATORY DEED ASSIGNMENT MERGER/NAME CHANGE MEMORANDUM OF FARMOUT AGREEMENT LIMITED PARTIAL ASSIGNMENT (50%) PARTIAL ASSIGNMENT (32%) ASSIGNMENT ASSIGNMENT MERGER/NAME CHANGE SECOND AMENDMENT TO MEMORANDUM OF FARMOUT AGREEMENT THIRD AMENDMENT TO MEMORANDUM OF FARMOUT AGREEMENT ASSIGNMENT (68%)</p>	<p>717 722 WYSOS 723 734 736 33 156 166 294 425 51 9 672 684 712 717 722 WYSOS 723 734 736</p>	<p>1 170 499 558 220 180 570 494 89 127 795 628 154 57 848 1 170 499 558 220</p>
<p>03-004B-0011-0000 03-004B-0012-0000 03-004B-0013-0000 p/o 03-004B-0014-0000 03-004B-0019-0000 03-004B-0020-0000 03-004B-0020-0001 03-004B-0020-0002 03-004B-0021-0000 03-004B-0022-0000 03-004B-0023-0000 03-004B-0024-0000 03-004B-0026-0000 03-004B-0026-0001 03-004B-0027-0000 03-004B-0028-0000 p/o 03-004B-0029-0000 03-004B-0030-0000</p>	<p>JAMES W. MCCONKEY, GUARDIAN OF LOUIS G. MCCONKEY AND A. EARL QUEEN; J. WESLEY SOMMERVILLE, GUARDIAN OF CLARENCE D. SOMMERVILLE, GUY VANCE SOMMERVILLE, RALPH REX SOMMERVILLE, LELIA A. SOMMERVILLE, AND HERSHEL HALE SOMMERVILLE; AND J. P. H. STRALEY, GUARDIAN OF JAMES S. LAW, BESSIE A. LAW, NANCY J. LAW, AND LEWIS G. LAW, ELLA MUMAW AND SARAH E. MUMAW, AND SPECIAL COMMISSIONERS LOUIS BENNETT S. E. BARRETT J. M. GUFFEY AND JOHN H. GALEY THE PHILADELPHIA COMPANY OF WEST VIRGINIA THE PHILADELPHIA COMPANY OF WEST VIRGINIA PITTSBURGH AND WEST VIRGINIA GAS COMPANY EQUITABLE GAS COMPANY AND PHILADELPHIA OIL COMPANY HOPE NATURAL GAS COMPANY CONSOLIDATED GAS SUPPLY CORPORATION CONSOLIDATED GAS TRANSMISSION CORPORATION CNG TRANSMISSION CORPORATION DOMINION TRANSMISSION, INC. CNX GAS COMPANY LLC</p>	<p>LOUIS BENNETT AND S. E. BARRETT J. M. GUFFEY AND JOHN H. GALEY THE PHILADELPHIA COMPANY OF WEST VIRGINIA THE PHILADELPHIA COMPANY OF WEST VIRGINIA EQUITABLE GAS COMPANY HOPE NATURAL GAS COMPANY CONSOLIDATED GAS SUPPLY CORPORATION CONSOLIDATED GAS TRANSMISSION CORPORATION CNG TRANSMISSION CORPORATION DOMINION TRANSMISSION, INC. CNX GAS COMPANY LLC NOBLE ENERGY, INC. HG ENERGY II APPALACHIA, LLC DOMINION ENERGY TRANSMISSION, INC. HG ENERGY II APPALACHIA, LLC HG ENERGY II APPALACHIA, LLC HG ENERGY II APPALACHIA, LLC LOUIS BENNETT AND S. E. BARRETT</p>	<p>NOT LESS THAN 1/8 ASSIGNMENT ASSIGNMENT ASSIGNMENT (50%) ASSIGNMENT DEED DEED ASSIGNMENT CONFIRMATORY DEED ASSIGNMENT MERGER/NAME CHANGE MEMORANDUM OF FARMOUT AGREEMENT LIMITED PARTIAL ASSIGNMENT (50%) PARTIAL ASSIGNMENT (32%) ASSIGNMENT ASSIGNMENT MERGER/NAME CHANGE SECOND AMENDMENT TO MEMORANDUM OF FARMOUT AGREEMENT THIRD AMENDMENT TO MEMORANDUM OF FARMOUT AGREEMENT</p>	<p>42 44 44 44 125 125 216 246 294 425 WYSOS 9 672 684 712 717 722 WYSOS 723 734 736</p>	<p>511 571 569 583 379 371 185 192 89 127 628 154 57 848 1 170 499 558 220</p>			

04/05/2024



HG Energy, LLC
5260 Dupont Road
Parkersburg, WV 26101
(304) 420-1100 - Office
(304) 863-3172 - Fax

March 15, 2024

*Ch # 42683
7500.00*

WV DEP
Division of Oil & Gas
Attn: Cragin Blevins
601 57th Street
Charleston, West Virginia 25304

RE: Winans 1216 N-4H Drill Permit Revision Request – (47-041-05748)
Freemans Creek District, Lewis County
West Virginia

Dear Mr. Blevins -

Per our discussions, enclosed are revised forms (WW-6B, casing schematic, survey plat, mylar, AOR, WW6A-1) and a check for expedited service for the 1216 N-4H well work permit revision request. We ask the permit be modified to reflect the revised lateral.

Please let me know if you have any questions or require additional information. I can be reached at (304) 420-1119 or dwhite@hgenergyllc.com.

Very truly yours,

Diane White

Diane C. White

Enclosures

cc: Ken Greynolds – WV DEP State Inspector

RECEIVED
Office of Oil and Gas

MAR 18 2024

WV Department of Environmental Protection

04/05/2024