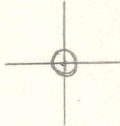


LATITUDE 39° 05' 00"



LONGITUDE 80° 17' 30"

7.5 OGIS topo location

7.5' loc 1.42S 15' loc \_\_\_\_\_  
' 1.52W (calc.) \_\_\_\_\_

Company \_\_\_\_\_

Farm \_\_\_\_\_

Quad BERLIN 7 1/2'

County LEWIS

District HACKERS CREEK

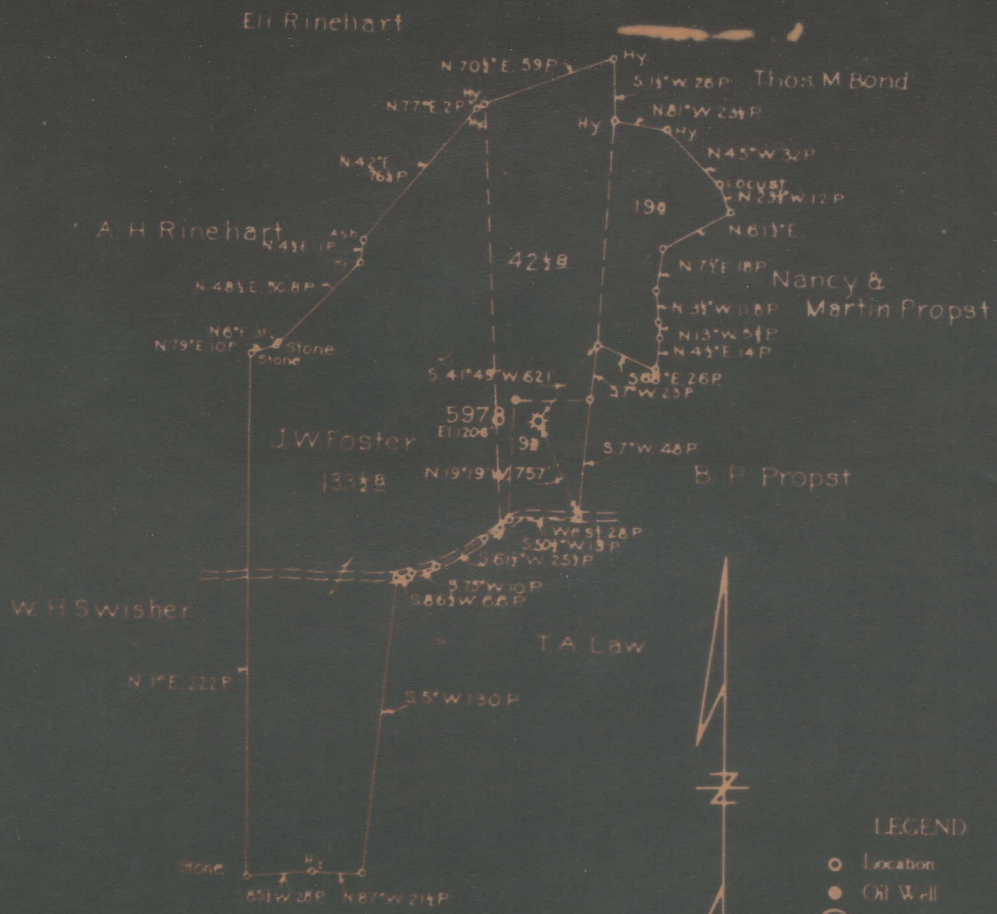
WELL LOCATION MAP

File No. 041-30A

Map of Well No. 30-A  
 Hope Natural Gas Company  
 J.W. Foster  
 Hacker Creek

District LEWIS

of the  
 Clarkburg, W. Va. on the  
 Farm consisting of 20.5 Acres  
 County W. Va.



*Law 30-A*

- LEGEND
- Location
  - Oil Well
  - ⊙ Aband.
  - ⊛ Gas Well
  - ⊙ Aband.
  - ⊗ Dry Hole
- Field Book No. 516 P. 3, 4  
 Scale 1" = 60 Poles  
 August 12, 1931

ENGINEER'S CERTIFICATE

I, the undersigned, hereby certify that this map is correct, and shows all the information to the best of my knowledge and belief, required by the oil and gas section of the mining laws of West Virginia.

Hackers Creek District, Lewis County, W. Va.  
 Hope Natural Gas Co., 445 W. Main St., Clarksburg, W. Va.  
 On 205 acres, surface and mineral rights owned by J. W. Foster,  
 R. F. D. No. 2, Buckhannon, W. Va.  
 Drilled prior to June 1, 1929.  
 Elevation, 1206' L.  
 6-5/8" casing, 2044'; 2" tubing, 4563'.  
 Hook wall and anchor packer, 5-3/16 x 2, set at 4510'.  
 Coal not recorded. Top of hole below Pittsburgh Coal horizon.  
 Abandonment reported to Dept. of Mines August 14, 1931.  
 Well was shot at 4548-4562'.  
 Salt water at 920 and 2335'; fresh water not recorded.  
 Gas well; now exhausted to extent of not being commercially  
 productive.

	Top.	Bottom.
Little Dunkard Sand	456	- 498
Big Dunkard Sand	540	- 600
Gas Sand	650	- 710
First Salt Sand (water, 920')	820	- 934
Second Salt Sand	956	- 1350
Maxton Sand	1440	- 1516
Little Lime	1605	- 1630
Pencil Cave	1630	- 1640
Big Lime	1640	- 1710
Big Injun Sand	1710	- 1845
Squaw Sand	1856	- 1918
Gantz? (Berea) Sand	1948	- 1982
50-Ft. Sand	2015	- Not recorded
30-Ft. Sand	Not recorded	- 2170
Gordon Stray Sand (water, 2335')	2330	- 2342
Gordon Sand	2363	- 2377
Fourth Sand (gas, 2442')	2439	- 2452
Formations from bottom of Fourth Sand to top of Benson Sand not recorded.		
Benson Sand (gas, 4552')	4550	- 4560
Total depth		4562

NOTE: Only string of casing in well is 2044 feet 6-5/8" and string of 2" tubing with 2500 feet open hole between tubing packer and bottom of 6-5/8" casing, 1500 pounds of cement was put in on top of tubing packer. Owing to the manner in which well is cased, we anticipate a difficult job to remove tubing, fill, and plug the lower hole.