

LATITUDE 39° 05' 00"



LONGITUDE 80° 22' 30"

7'5 OGIS topo location

7.5' loc 0.855 15' loc _____
' 2.20w (calc.) _____

Company _____

Farm _____

Quad WESTON 7 1/2'

County LEWIS

District HACKERS CREEK

WELL LOCATION MAP

File No. 041 - 32A

Plan 3 WELLS No 4755-3645

HOPE NATURAL GAS CO

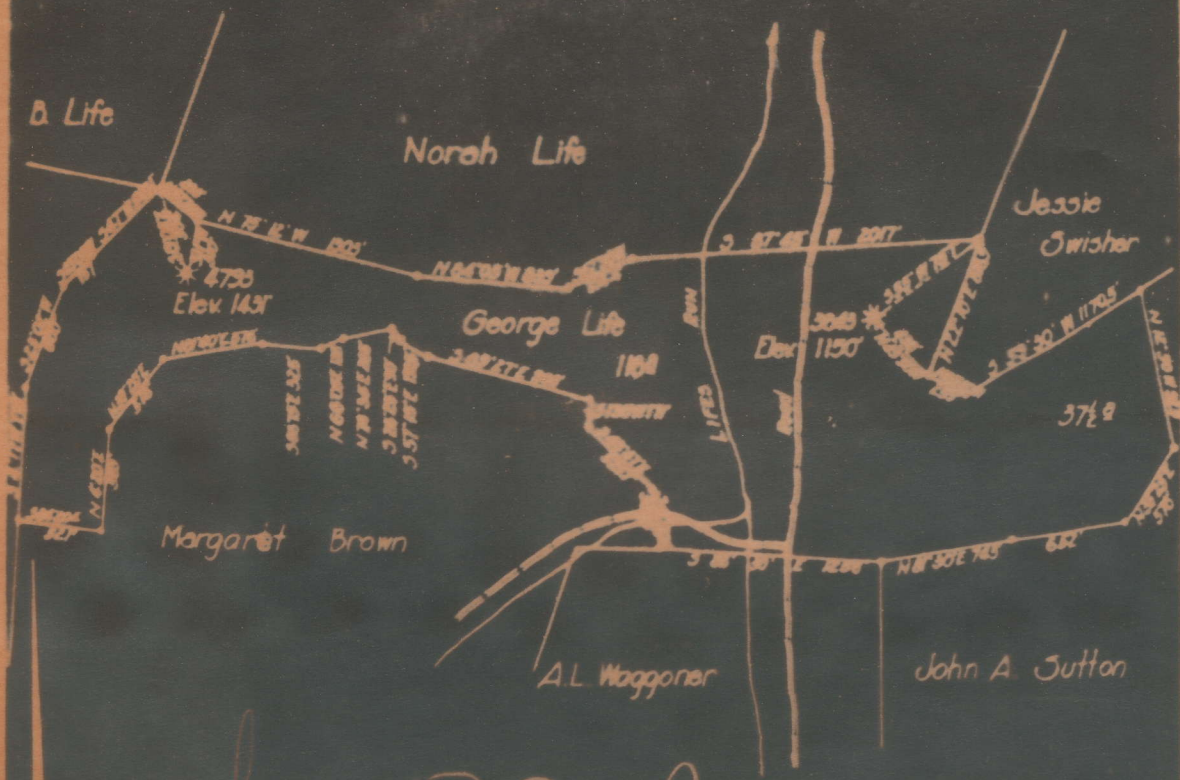
GEORGE LIFE

MACKERS CREEK

Chatham, W. Va., on the

Face consisting of 156 Acres

LEWIS County, W. Va.



Law 32-A

LEGEND

- Location
- Oil Well
- ⊙ " " Aband.
- ⊛ Gas Well
- ⊘ " " Aband.
- ⊕ Dry Hole

Field Book No. EDP 67

Scale 1/4" = 100'

Sept. 20 1911

ENGINEERS CERTIFICATE

I, the undersigned, hereby certify that this map is correct and shows all the information to the best of my knowledge.

32A

Hackers Creek District, Lewis County, W. Va.
 Hope Natural Gas Co., 445 W. Main St., Clarksburg, W. Va.
 On 15¹/₄ acres, surface and mineral rights owned by George Life Heirs,
 Jane Lew, W. Va.
 Drilled prior to June 1, 1929.
 Elevation, 1431' L.
 10" casing, 171'; 6-5/8", 1727'.
 Coal was not encountered.
 Abandonment reported to Dept. of Mines Oct. 1, 1931.
 Well was shot at 2571-2579'.
 Water not recorded.
 Gas well; now exhausted to extent of not being commercially
 productive.

	Top.	Bottom.
Little Dunkard Sand	450	485
Big Dunkard Sand	550	575
Gas Sand	620	670
First Salt Sand	775	835
Second Salt Sand	975	1070
Maxton Sand	1585	1605
Little Lime	1630	1640
Pencil Cave	1640	1650
Big Lime	1650	1700
Big Injun Sand	1700	1835
Squaw Sand	1835	1900
Berea? Sand	1945	1970
Gantz? (Berea Sand (show of gas, 2025' and 2028'))	2020	2040
50-Ft. Sand	2125	2200
30-Ft. Sand	2225	2300
Gordon Stray Sand	2320	2330
Gordon Sand (gas, 2384')	2350	2405
Fifth Sand (gas, 2514')	2512	2515
Bayard Sand (gas, 2577')	2569	2580
Total depth		2660