

LATITUDE 39° 07' 30"

03, 42, 08  
LONGITUDE



7'5 OGIS topo location

7.5' loc 2.855 15' loc \_\_\_\_\_  
                  1.49 W (calc.) \_\_\_\_\_

Company \_\_\_\_\_

Farm \_\_\_\_\_

Quad WESTON 7 1/2'

County LEWIS

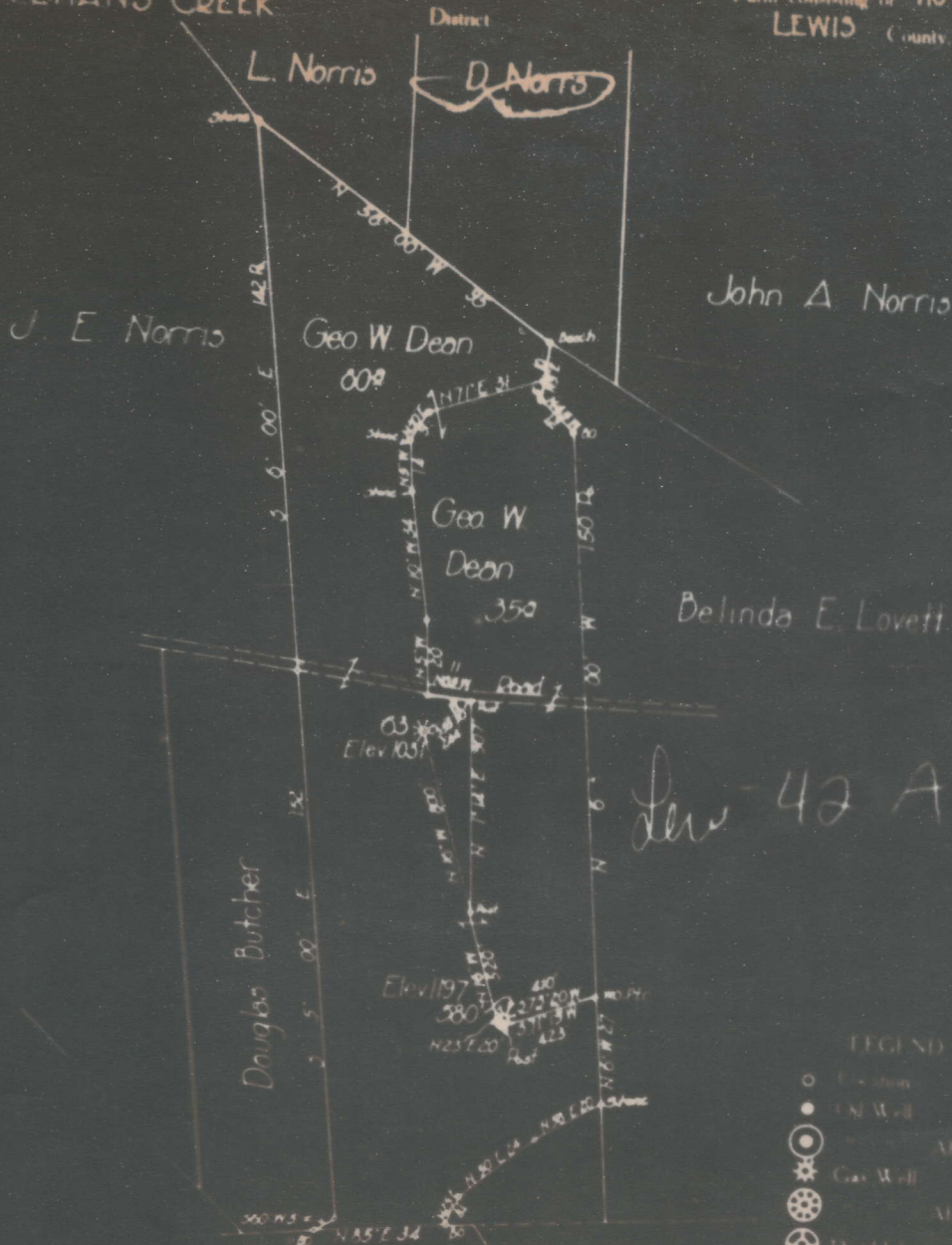
District FREEMANS CREEK

WELL LOCATION MAP

File No. 041-42A

WELLS No 05 580  
 CONSERVE GAS CO  
 GEORGE W DEAN  
 FREEMANS CREEK

of the  
 Clarkburg, W. Va., on the  
 Farm consisting of 110 Acres  
 LEWIS County, W. Va.



Leve 42 A

LEGEND  
 ○ Location  
 ● Oil Well  
 ⊙ Aband  
 ⊛ Gas Well  
 ⊞ Aband  
 ⊕ Dry Hole  
 Field Book No. 53526  
 Scale 1" = 400'  
 63 June 14 '32

ENGINEERS CERTIFICATE

I, the undersigned, hereby certify that this map is correct and shows all the information to the best of my knowledge and belief, required by the oil and gas section of the mining laws of West Virginia.



LEW-42-A

Freemans Creek District, Lewis County, W. Va.  
 Reserve Gas Co., 145 W. Main St., Clarksburg, W. Va.  
 On 118 acres, surface owned by J. L. J. Bailey, R. 1, Weston, W. Va.  
 Elevation, 1031' L.  
 10" casing, 225'; 8", 960'; 6-5/8", 991'; 5-3/16", 1891'.  
 No coal was encountered.  
 Abandonment reported to Dept. of Mines June 15, 1932.  
 Well was shot at 2030-2042'.  
 Water not recorded.  
 Gas well; not now commercially productive.

	Top.	Bottom.
Dunkard Sand	415	465
1st Salt Sand	850	880
2nd Salt Sand	910	940
Big Lime	1200	1260
Big Injun Sand	1260	1350
Gordon Sand (gas, 1890')	1880	1904
Fifth Sand (gas, 2030'), to bottom	2029	2045