

LATITUDE 39° 02' 30"



LONGITUDE 80° 27' 30"

7'5 OGIS topo location

7.5' loc 0.57s 15' loc _____
0.16w (calc.) _____

Company _____

Farm _____

Quad WESTON 7 1/2'

County LEWIS

District COURT HOUSE

WELL LOCATION MAP

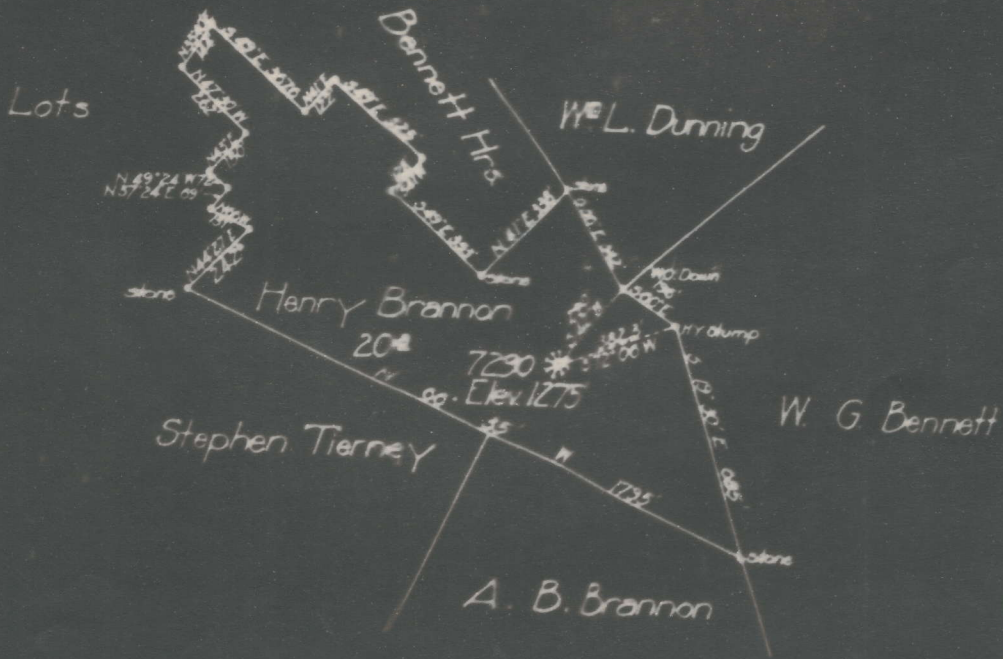
File No. 041-45A

Plat of WELL No 7290
MODE NATURAL GAS CO
HENRY BRANNON
COURT HOUSE

District

of the
Clarksburg, W. Va., on the
Farm consisting of 20 Acres
LEWIS County, W. Va.

Lew-45-A



LEGEND

- Location
- Oil Well
- ⊙ " " Aband.
- ⊛ Gas Well
- " " Aband.
- ⊕ Dry Hole

Field Book No 540 D12

Scale 1" = 400'

45A

Court House District, Lewis County, W. Va.
 Hope Natural Gas Co., 445 W. Main St., Clarksburg, W. Va.
 On 20 acres, surface and mineral rights owned by Edw. & Lillie M.
 Schwartz, Weston, W. Va.
 Elevation, 1275' L.
 6-5/8" casing, 1765'; 5-3/16", 2442' (?).
 Coal was encountered at 170-171 1/2'.
 Abandonment reported to Dept. of Mines Sept. 30, 1932.
 No record of shot. No record of water.
 Gas well; now exhausted.

	Top.	Bottom.
Native coal	170	- (12 to 18 inches thick)
Little Dunkard Sand	690	- 746
Big Dunkard Sand	764	- 845
First Salt Sand	978	- 1054
Second Salt Sand	1070	- 1100
Maxton Sand	1250	- 1385
Big Lime	1773	- 1855
Big Injun Sand	1855	- 1956
Gantz? (Berea) Sand (gas, 2195')	2190	- 2225
50-Ft. Sand	2294	- 2314
Gordon Stray Sand (gas, 2448')	2440	- 2460
Gordon Sand	2462	- 2470
Fourth Sand	2505	- 2513
Fifth Sand (gas, 2608')	2608	- 2621
Original total depth		2755
Present total depth		2200

5-3/16" casing set cut at 2220' and fished out to 2214',
 knocked pin off Bull Dog Spear at 2214', in fishing for Spear,
 Jarred bowl off 6" Combination Socket, leaving Bull Dog Spear,
 Bowl and Slips of Combination Socket and 228 feet of 5-3/16"
 casing in hole which we are unable to fish out, lower hole is
 filled with cavings below the above mentioned material. Present
 depth of hole 2200 feet.