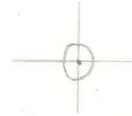


LATITUDE 39° 05' 00"

00' 52" 08" LONGITUDE



7'5 OGIS topo location

7.5' loc 2.685 15' loc _____
 0.61W (calc.) _____

Company _____

Farm _____

Quad WESTON 7 1/2'

County LEWIS

District HACKERS CREEK

WELL LOCATION MAP

File No. 041-48A

Plot of WELL NO. 1233

HOPE NATURAL GAS

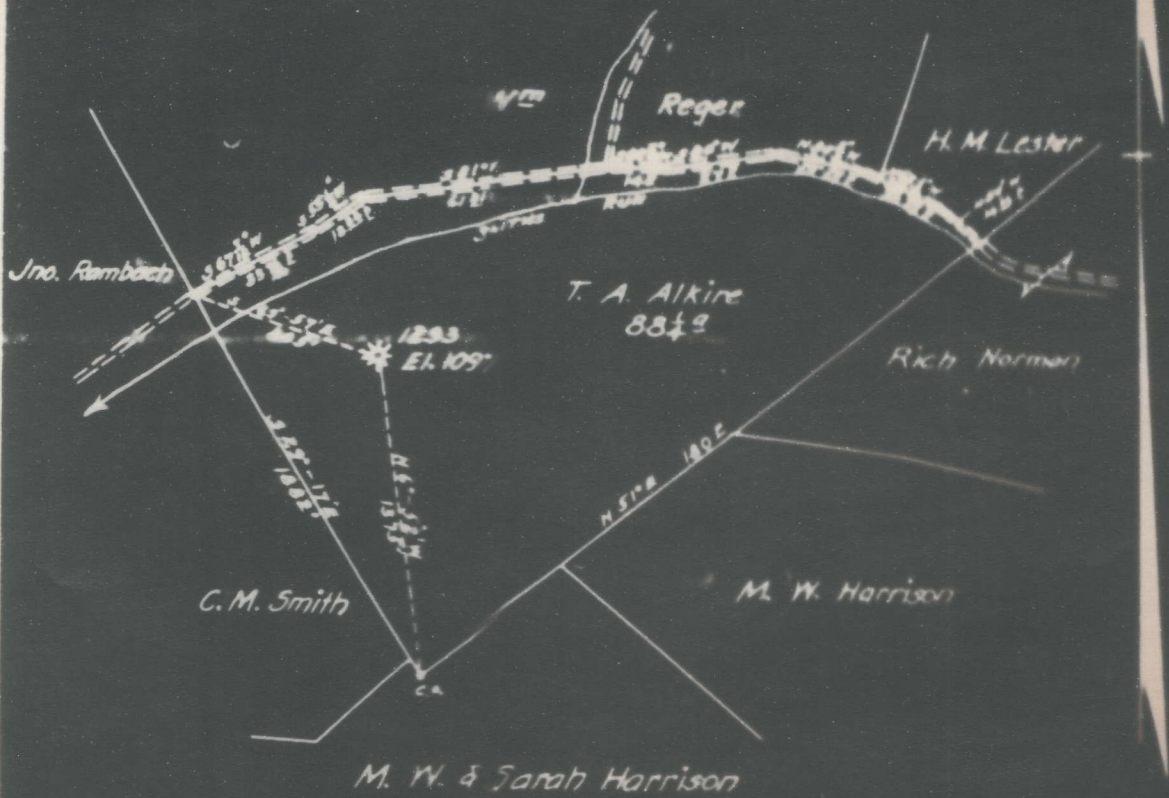
T. A. ALKIRE

HACKERS CREEK

District

LEWIS

Clarkburg, W. Va., on the
Farm consisting of 30 Acres
County, W. Va.



Lew-48-A

LEGEND

- Location
- Oil Well
- " " Aband.
- ⊗ Gas Well
- " " Aband.
- ⊕ Dry Hole

Field Book No. 541 P. 21

Scale 1" = 600'

Dec. 7, 1932

ENGINEERS CERTIFICATE

I, the undersigned, hereby certify that the map is correct and that all the information thereon is true.

Hackers Creek District, Lewis County, W. Va.
 Hope Natural Gas Co., 445 W. Main St., Clarksburg, W. Va.
 On 90 acres, surface and mineral rights owned by Ira Bennett,
 Route 4, Weston, W. Va.
 Elevation, 1097' L.
 10" casing, 200'; 8 $\frac{1}{2}$ ", 710'; 6-5/8", 1496'; 5-3/16", 1852'.
 Coal was encountered at 318-322'.
 Abandonment reported to Dept. of Mines Dec. 9, 1932.
 Well was shot at 1888-1893'.
 Salt water not recorded.
 Gas well; exhausted to extent that it is not commercially
 productive.

	Top.	Bottom.
Pittsburgh? Coal	318	- 322
Little Dunkard Sand	340	- 358
Big Dunkard Sand	412	- 472
Gas Sand	590	- 606
First Salt Sand	710	- 730
Second Salt Sand	795	- 918
Maxton Sand (show gas, 1390')	1255	- 1280
Little Lime	1425	- 1445
Pencil Cave	1445	- 1455
Big Lime	1455	- 1515
Big Injun Sand (gas, 1545'; show oil, 1545')	1515	- 1662
Squaw Sand	1684	- 1710
Berea? Sand	1745	- 1764
Gantz? (Berea) Sand (gas, 1797')	1795	- 1813
50-Ft. Sand (gas, 1889')	1880	- 1898
Total depth		1917