

LATITUDE 39°05'00"

LONGITUDE 80°32'30"



7'5 OGIS topo location

7.5' loc	<u>1.515</u>	15' loc	_____
	<u>0.96 W</u>	(calc.)	_____

Company \_\_\_\_\_

Farm \_\_\_\_\_

Quad CAMDEN 7 1/2'

County LEWIS

District FREEMAN'S CREEK

WELL LOCATION MAP

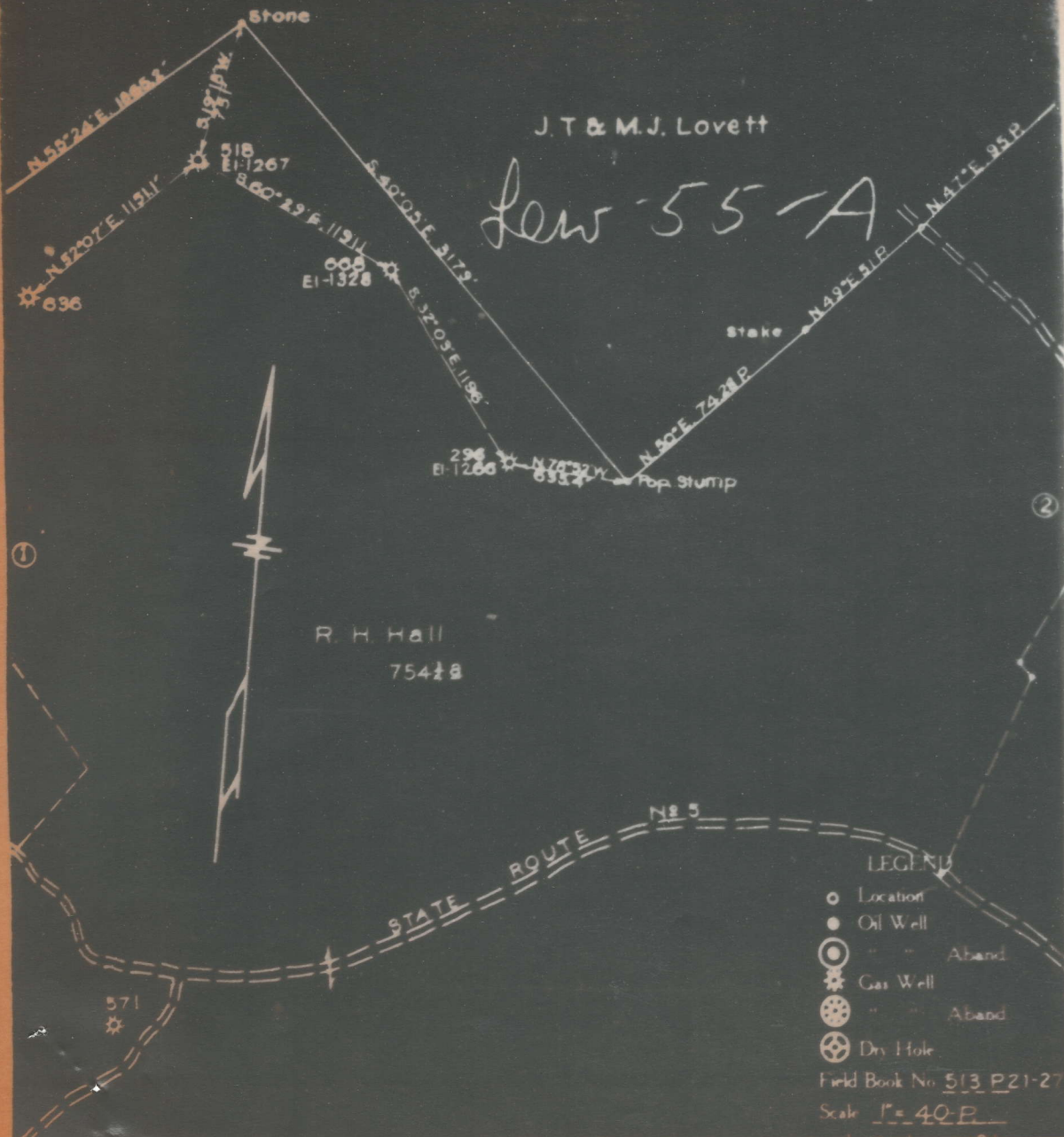
File No. 041-55A

Sheet No. 1.

Oil Well Nos. 296, 518, 668.  
Reserve Gas Company  
S. D. Camden  
Freemans Creek

District Lewis

of the  
Clarksburg, W. Va., on the  
Farm consisting of 1600 Acres  
County, W. Va.





55A

on plat Lewis 1681

Freemans Creek District, Lewis County, W. Va.  
 Reserve Gas Co., 445 W. Main St., Clarksburg, W. Va.  
 On 1600 acres, surface and mineral rights owned by R. H. Hall,  
 Weston, W. Va.  
 Elevation, 1267' L.  
 6-5/8" casing, 1589'; 5-3/16", 2158'.  
 Starts below coal.  
 Abandonment reported to Dept. of Mines Nov. 10, 1933.  
 Well was shot at 2391-2402'.  
 Fresh water at 235'; salt water at 846'.  
 Gas well; now exhausted to the extent that it is no longer  
 commercially productive.

	Top.	Bottom.
Little Dunkard Sand (water, 235')	210	- 245
Big Dunkard Sand	430	- 478
Gas Sand	682	- 776
First Salt Sand (water, 846')	890	- 840
Second Salt Sand	860	- 984
Third Salt Sand	1063	- 1110
Maxton Sand	1380	- 1430
Little Lime	1460	- 1500
Pencil Cave	1500	- 1511
Big Lime	1511	- 1582
Big Injun Sand (show gas, 1605')	1582	- 1685
50-Ft. Sand (show gas, 2005')	1998	- 2010
30-Ft. Sand	2079	- 2090
Gordon Stray Sand (gas, 2172')	2158	- 2182
Gordon Sand (gas, 2198, 2205, 2208, 2210, 2228')	2191	- 2228
Fifth Sand (gas, 2392-2400')	2390	- 2405
Total depth		2418