

LATITUDE 39° 02' 30"

LONGITUDE 80° 30' 00"



7'5 OGIS topo location

7.5' loc 1185 15' loc _____
 0.48W (calc.) _____

Company _____

Farm _____

Quad CAMDEN 7 1/2' _____

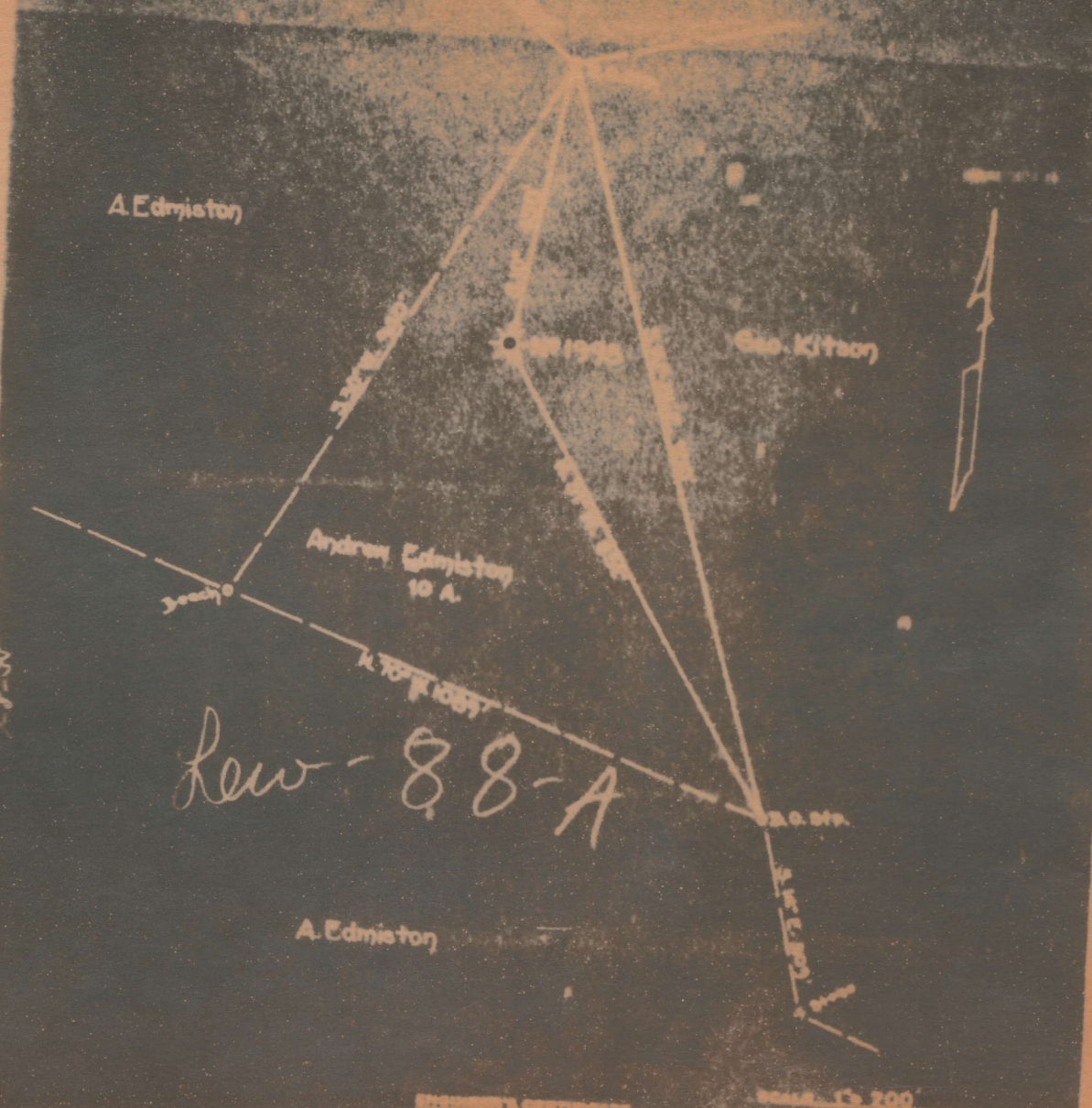
County LEWIS _____

District COURT HOUSE _____

WELL LOCATION MAP

File No. 041-88A _____

STATE OF TEXAS
COUNTY OF ...
...
...



THE UNDERSIGNED, HEREBY CERTIFY THAT THIS MAP IS CORRECT AND SHOWS ALL THE SURVEYS TO THE BEST OF MY KNOWLEDGE AND BELIEF, REQUIRED BY THE OIL AND GAS SECTION OF THE ...

88A

Court House District, Lewis County, W. Va.
 Pittsburgh & W. Va. Gas Co., Clarksburg, W. Va.

On 10 acres, surface owned by Mrs. Loy Byrd, R. F. D. No. 2,
 Weston, W. Va., and mineral rights by Andrew Edmiston, Weston,
 W. Va., and Mathew Edmiston, Home Owners Loan Co., Charleston,
 W. Va.

Well was completed October 21, 1909.

Elevation, 1308' V. A.

1 3/4" conductor, 16'; 10" casing, 125'; 8 1/2", 925'; 6-5/8", 2025'.

Coal was encountered at 280-285, 780-785, and 1285-1290'.

Abandonment reported to Dept. of Mines July 5, 1935.

Located July 28, 1909; began drilling Sept. 11, 1909.

Well was shot in Gordon and 5th Sands. Gas well.

	Top.	Bottom.
Red rock	0	40
Lime, white	40	60
Red rock	60	70
Lime, white	70	90
Red rock	90	125
Lime, white	125	135
Red rock	135	160
Sand, gray	160	190
Slate, black	190	200
Sand, white	200	220
Red rock	220	260
Lime, white	260	280
Coal, black	280	285
Lime, white	285	310
Slate, black	310	340
Lime, white	340	350
Slate, white	350	360
Sand, white	360	380
Slate, white	380	410
Lime, white	410	435
Red rock	435	475
Lime, white	475	500
Slate, white	500	520
Red rock	520	560
Lime, white	560	570
Sand, white	570	600
Slate, white	600	605
Lime, white	605	625
Slate, white	625	650
Sand, white	650	665
Slate, white	665	700
Lime, white	700	730
Red rock	730	760
Lime, white	760	780
Coal, black	780	785
Slate, black	785	835
Sand, white	835	865
Slate, white	865	905
Lime, white	905	925
Sand, white	925	955
Slate, white	955	995
Sand	995	1020

(OVER)

	Top.	Bottom.
Slate, black	1020	1025
Lime, white	1025	1055
Sand, white	1055	1175
Slate, black	1175	1285
Coal, black	1285	1290
Lime, white	1290	1300
Sand, white	1300	1400
Slate, black	1400	1470
Salt Sand, white	1470	1550
Slate, black	1550	1580
Maxton Sand	1580	1630
Slate, black	1630	1740
Red rock	1740	1930
Lime, white	1930	1945
Slate, white	1945	1955
Big Lime, white	1955	2010
Big Injun Sand, white	2010	2140
Slate, white	2140	2415
Gantz? Sand, white	2415	2445
Slate, black	2445	2500
Stray? Sand, white	2500	2520
Slate, white	2520	2525
Sand -	2525	2550
Slate -	2550	2555
Stray Sand	2555	2585
Slate -	2585	2590
Gordon Sand (gas, 2609')	2590	2650
slate and shell	2650	2802
5th Sand (gas, 2803')	2802	2817
Slate, to bottom	2817	2872